

SECTION 7 EXPLODED VIEWS

Note:

- -XX and -X mean standardized parts, so they may have some difference from the original one.
- Items marked "*" are not stocked since they are seldom required for routine service. Some delay should be anticipated when ordering these items.

- The mechanical parts with no reference number in the exploded views are not supplied.
- Color Indication of Appearance Parts Example:
KNOB, BALANCE (WHITE) . . . (RED)

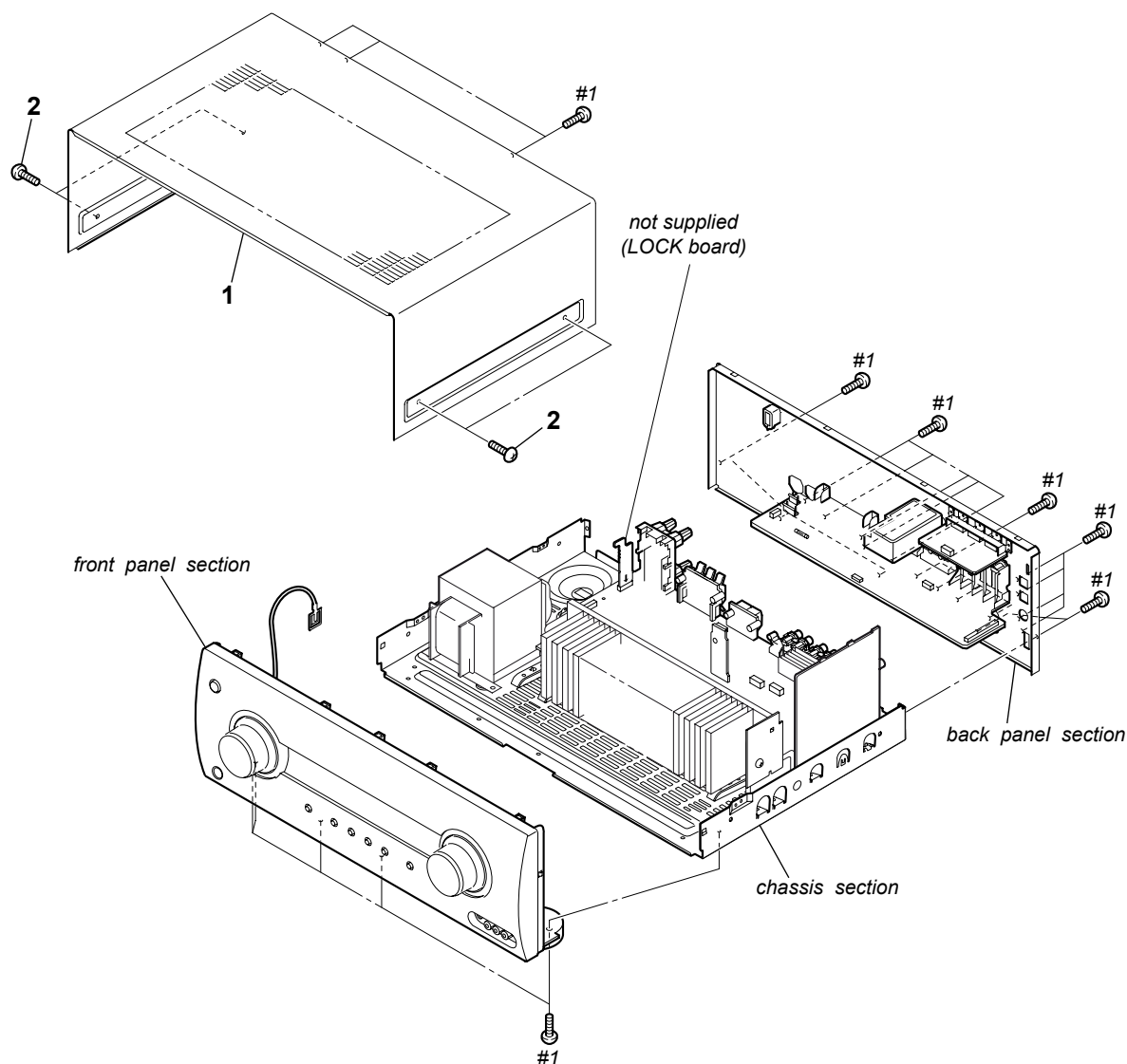
Parts Color Cabinet's Color

Abbreviation

AR	: Argentina model
E51	: Chilean and Peruvian models
EA	: Saudi Arabia model
MY	: Malaysia model
SAF	: South African model
SP	: Singapore model

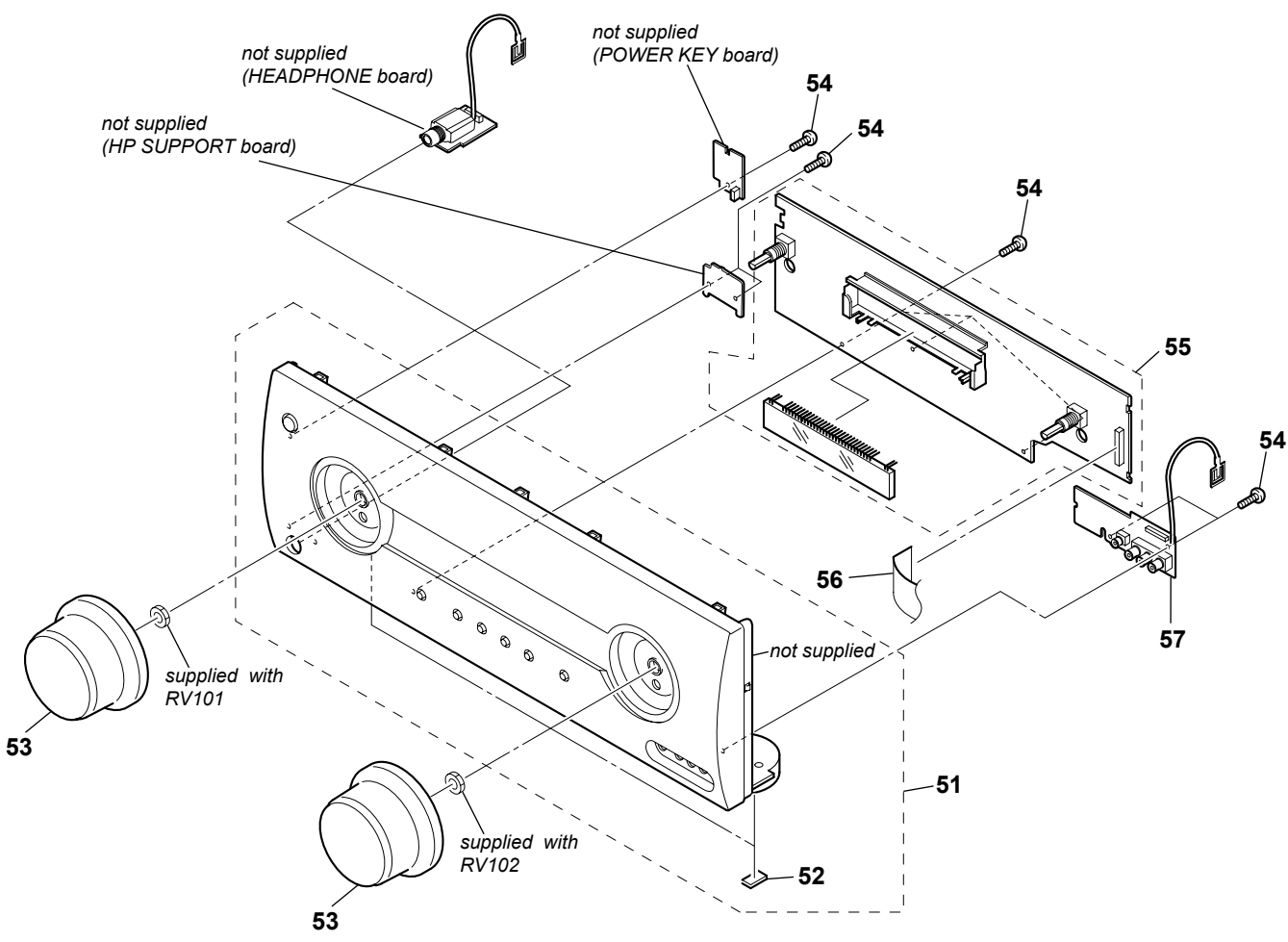
The components identified by mark \triangle or dotted line with mark \triangle are critical for safety.
Replace only with part number specified.

7-1. CASE

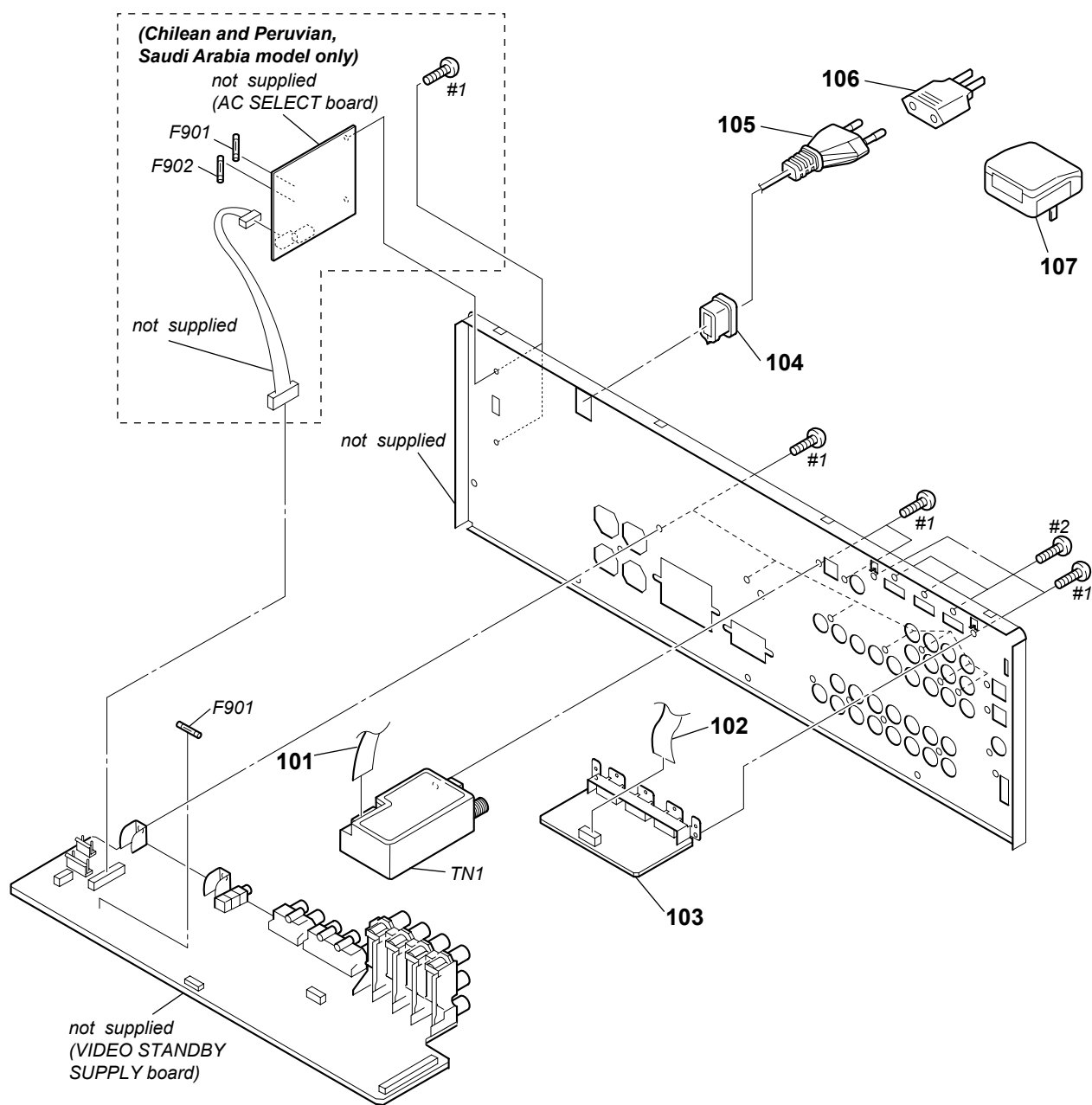


STR-KM5500

7-2. FRONT PANEL SECTION



7-3. BACK PANEL SECTION



Note: If connector, FFC is replaced, install it after bending it in the same form as that before replacement.

7-4. CHASSIS SECTION