



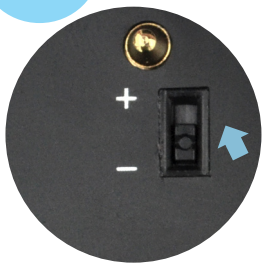
QUATTRO 4.0 QUICK START GUIDE

Neckloop with Removable Bluetooth Mic (BT4)



www.clearsounds.com

1. CHARGING - ENGAGE THE BATTERY



STEP 1: Use the tip of a pen to move both battery engagement +/- switches into the + position on the QUATTRO 4 and BT4 Removable Mic. **Do NOT turn them off!**



STEP 2: Plug charger into QUATTRO 4.



STEP 3: Plug charger into outlet to fully charge the QUATTRO 4.



STEP 4: Charging... appears on the screen, and the red light is on.



STEP 5: QUATTRO 4 is charged when screen indicates 100% and battery icon shows full.

TIP: Charge the Quattro 4 with the BT4 Mic attached every night for maximum performance. The battery icon will identify when battery power is running low on the main base. On the mic, the indicator light will turn red.

2. PAIRING QUATTRO WITH BLUETOOTH DEVICE

- Make sure **other connected Bluetooth devices** are **turned off** when syncing a new Bluetooth device.



STEP 1: Ensure QUATTRO 4 is turned off, press and hold multi-function button for approximately six seconds.



STEP 2: After around six seconds, the QUATTRO 4 announces Pairing, and Pairing... appears on the QUATTRO 4 screen.



STEP 3: Turn on the Bluetooth device and put it in Bluetooth pairing mode. Often this requires device menu selections such as Settings > Bluetooth > ON > Click QUATTRO 4.0.



STEP 4: When the device name appears on the QUATTRO 4 screen, it is paired and connected.

3. TAKE A CALL



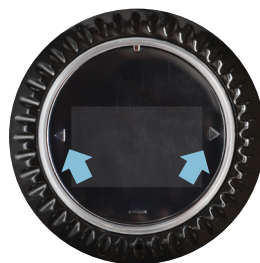
STEP 1: To answer the call: Firmly press multi-function twice.



STEP 2: To reject the call: Press and hold multi-function.



STEP 3: To check Caller ID (Caller ID service required): Firmly press multi-function once. The number appears on QUATTRO 4 screen. To answer call, press multi-function again.



STEP 4: Adjust the volume: Tap < (volume -) or > (volume +).



STEP 5: To end call, press and hold multi-function. The QUATTRO 4 announces call terminated.

4. PLACE A CALL USING CALLER ID



STEP 1: To call using the Caller ID list on the QUATTRO 4 (Caller ID service required): Press and hold multi-function button until you hear a tone.



STEP 2: Caller ID list appears on screen. List includes calls received or missed while the phone was connected to the QUATTRO 4.



STEP 3: Highlight the number that you want to call by tapping <.



STEP 4: Press multi-function. Dialing appears on the screen.



STEP 5: Adjust the volume: Tap < (volume -) or > (volume +).

5. PAIRING AND CONNECTING THE QUATTRO 4 MICROPHONE

The BT4 mic comes paired out of the factory. However if for some reason it was removed from the paired list, these are the instructions to “re-pair” it.

PAIR



STEP 1: Remove the top of the QUATTRO 4 (BT4 Removable Mic).



STEP 2: Ensure QUATTRO 4 is turned off, press and hold multi-function button for approximately six seconds, until Pairing... appears on screen.



STEP 3: Quickly pair and connect the BT4 Removable Mic: On the Mic, press and hold BUTTON until light flashes red and blue.



STEP 4: The QUATTRO 4 announces Paired, and then Device (number) connected. CS BT4 Mic appears on screen.

CONNECT & USE



STEP 1: Place BT4 Removable Mic in a position that best captures the voice(s) that you want to hear. On the BT4 Removable Mic, BRIEFLY press BUTTON on the Mic and the device will begin connecting to the QUATTRO 4.



STEP 2: To complete connection: Firmly press multi-function button twice.



STEP 3: To terminate connection, press and hold multi-function. The QUATTRO 4 announces call terminated.

TIPS: The QUATTRO 4 (and/or mic) turns itself off in ten minutes when left completely idle.

-and-

The BT4 Removable Mic must be within 30 feet of the QUATTRO 4 to operate correctly.



QUICK START GUIDE

GETTING FAMILIAR

Main Base Unit

Home Screen: The screen displays the following information:

- a) Devices connected to the Quattro 4.0
- b) Headphones plugged into the Quattro 4.0
- c) Battery charge level

The Home Screen display remains for approximately 8 seconds, then goes dark. To activate the screen, simply tap the **Touch Function Key (TFK)**.



TFK Touch Function Key: The touch sensor is used to answer & end phone calls. It activates the LCD screen to view. It pauses & plays music. Tap twice to activate the voice control for the second device.

Volume & Scroll Touch Keys: These keys are used to turn the volume up or down and to scroll through the menu or skip forward & back when listening to music tracks.



BT4 Removable Bluetooth Mic: This entire disc is the removable mic. It magnetically connects to the main base. When charging the Quattro 4.0, make sure to have the mic connected as this is how the mic charges.

Engagement + / -

Charging Pegs: These pegs fit into the charging contacts (dimples) on the Quattro 4.0 Base when the mic is attached to the Quattro 4.0 Base.

Charging Dimples: These holes are where the charging pegs are placed when the mic is attached to the base. The mic must be attached when charging the unit in order for the mic batteries to charge.

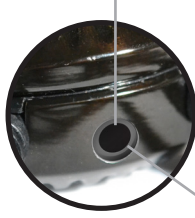


8-wire Neckloop: This cord hangs the Quattro 4.0 around your neck like a necklace. This is an 8-wire loop that connects to hearing aids with t-coils delivering sound directly through the hearing aids when they are in t-mode.



Battery Engage Switches: There is a battery engage switch on both the removable mic and the Base. This switch **MUST** be in the **+** position on both the Mic & Base for the unit to function. By switching to the **-** position, the battery is disengaged from the circuit. This switch does **NOT** need to be put in the **-** position. The purpose is to protect the integrity of the battery when stored in the warehouse.

Earbud Jack: This jack accepts any 3.5mm audio only headsets. We package the Quattro 4.0 with our patented SmartSounds Ear buds.



Charge indicator: This light shows red when charging and turns to a solid blue when fully charged.



Charging port: This is where you plug the micro USB charging cable in to the Quattro 4.0.

MFB Base Multi-function Button: This button is used to initiate & answer calls, turn the Quattro on & off, activate the LCD screen to view, pair the Quattro 4.0 to Bluetooth devices (i.e. mobile phone) switch between calls & initiate Siri or S-Voice for voice activation.



MMFB Microphone Multi-function Button: This button is used to pair the removable Bluetooth mic to the Quattro 4.0 base. It is also used to make a connection between the Quattro 4.0 base and the removable mic.

ClearSounds®
Moving Beyond the Sound Barrier

QUICK START GUIDE