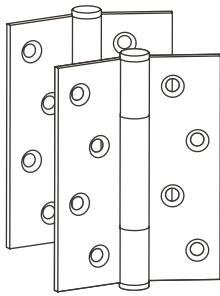


Hinge

INSTRUCTIONS

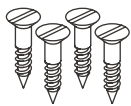
INCLUDED



Hinge x2

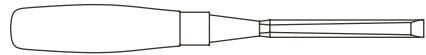


Crosshead wood
screw x1

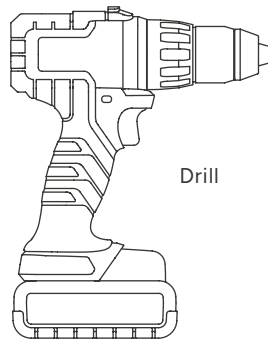


Flathead wood
screw x16

TOOLS YOU'LL NEED



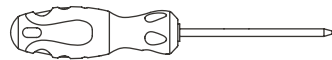
Chisel



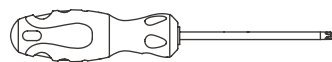
Drill



2mm drill bit



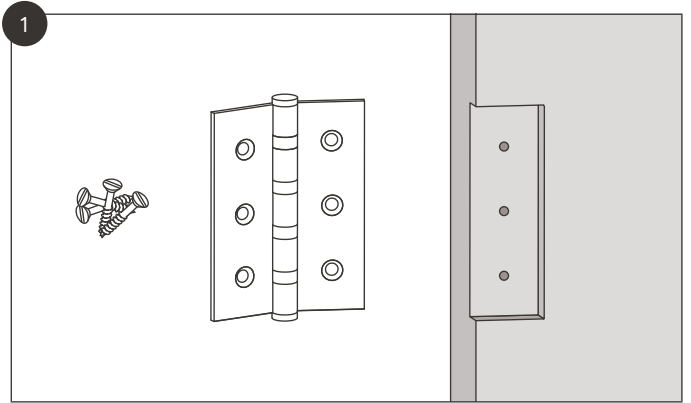
Flathead
screwdriver
(10mm)



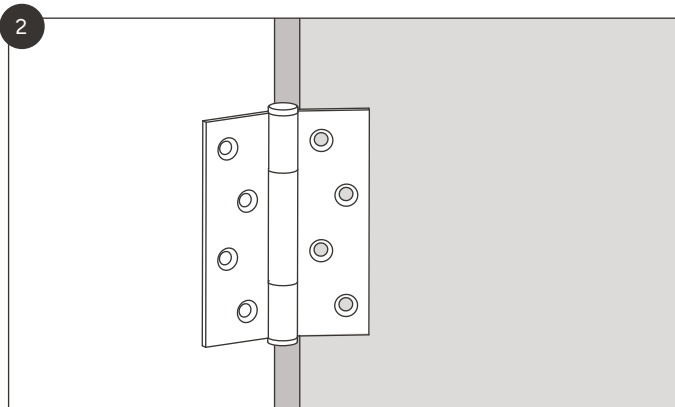
Crosshead
screwdriver
(PZ2)

Hinge instructions

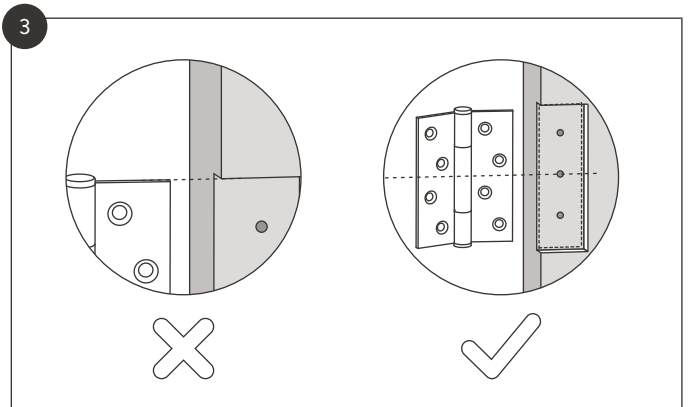
Note: If hanging a new door, these hinges should be installed by a qualified carpenter. These instructions are a guide for retrofitting only.



Remove the existing hinges from the door.

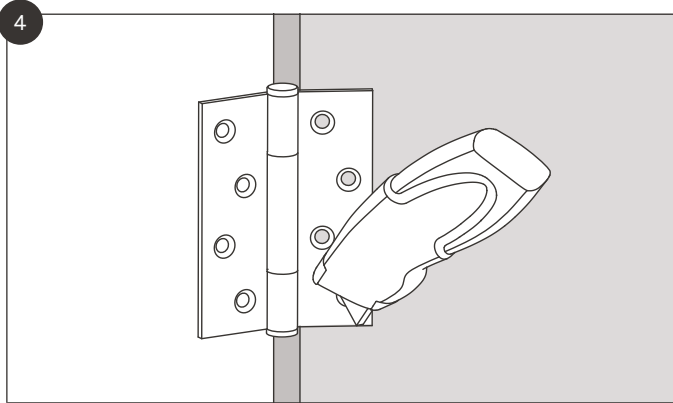


Hold the new hinge against the door in the position you'd like it.

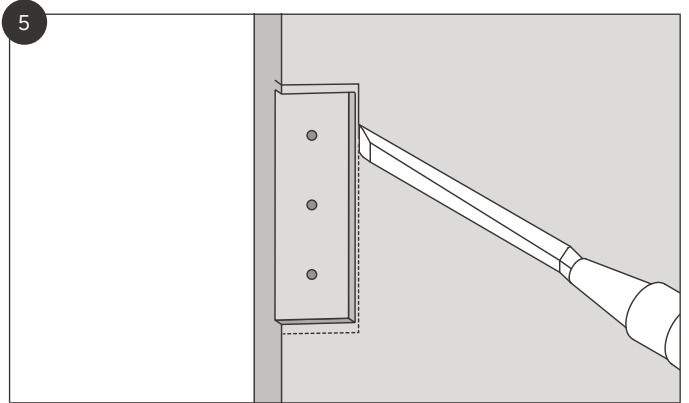


Important: do not use the edges of the previous recess as a reference point. They could've been cut unevenly. Use the centre of the previous hinges to determine the new location. Failure to do so could result in a misaligned door.

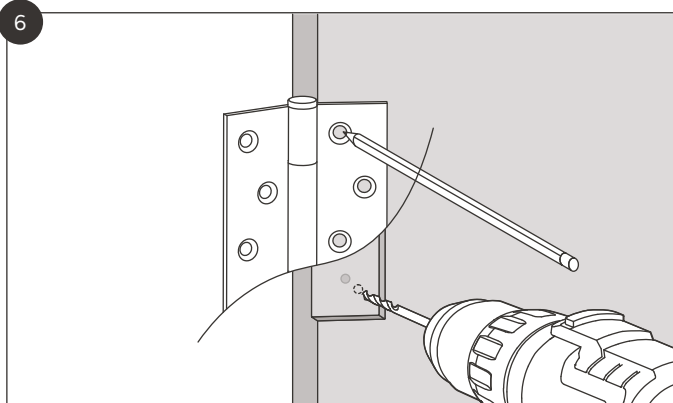
Hinge instructions



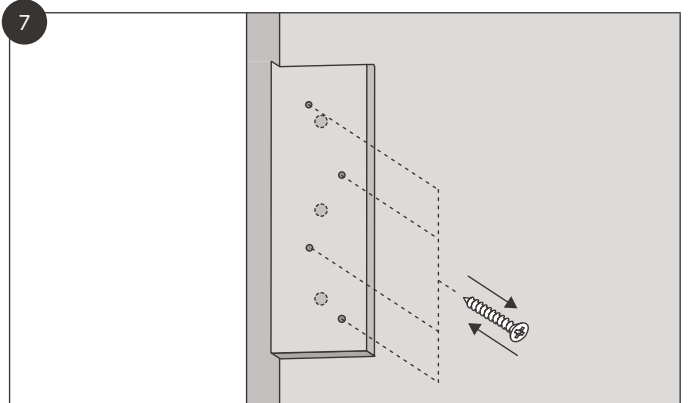
Mark the location of the new hinge. For best results, we recommend using a sharp blade to carefully score the outline.



Chisel out a recess for the hinge. If using an intumescent pad, make sure this is 5mm deep. Otherwise, it will need to be 3mm deep.

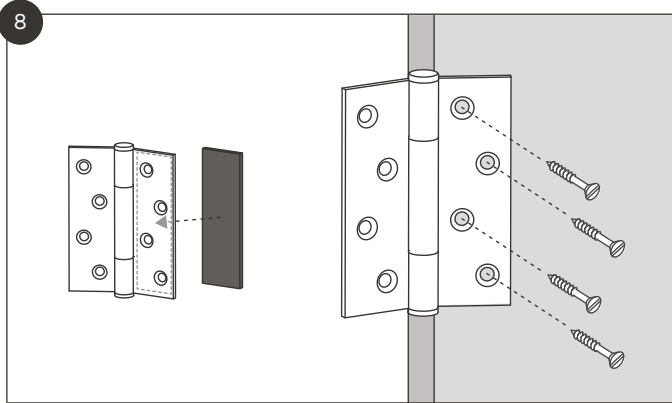


Mark and drill 2mm pilot holes for the wood screws.

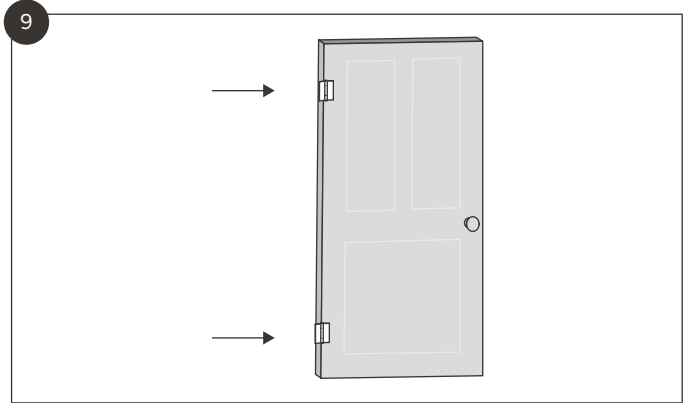


Use the crosshead wood screw provided to tap new holes in the door.

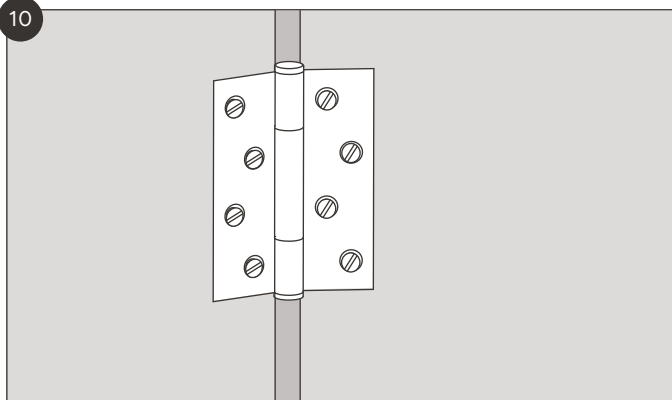
Hinge instructions



Use the flathead wood screws to secure the hinge to the door. For fire regulation compliance, an intumescent pad must be stuck to the back of the Hazel hinge before securing it to the door.



Repeat for the other hinges.



Repeat with the other halves of the hinges, reattaching the door to the frame.