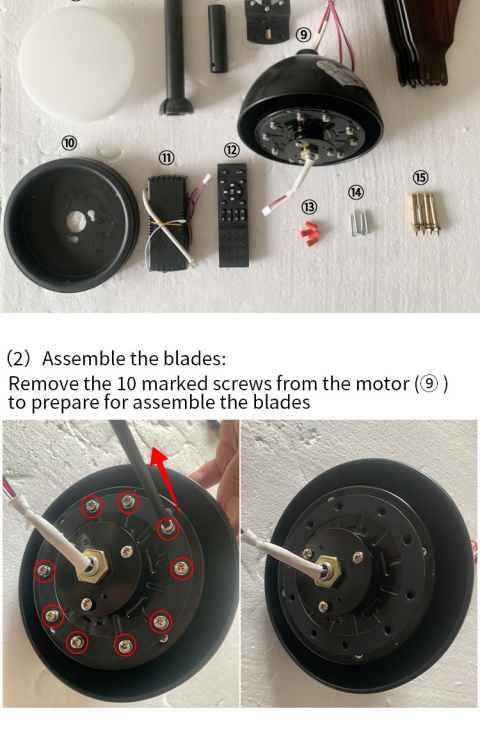


Installation instructions

(1) Accessories diagram

①small hanging cup ②big hanging cup ③light
④blades (5 pieces) ⑤light cover ⑥long hanging lever
⑦short hanging lever ⑧hanging bracket ⑨motor ⑩lamp tray
⑪controller ⑫remote control ⑬wire cap ⑭self-tapping screw
⑮expansion screws



(2) Assemble the blades:

Remove the 10 marked screws from the motor (⑨) to prepare for assemble the blades



Assemble the blades (④) with the 10 screws to the motor (⑨)

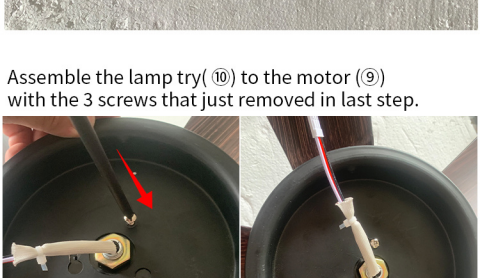


(3) Assemble the lamp tray (⑩):

Firstly remove the marked 3 screws from the motor



Secondly, prepare these parts



Assemble the lamp try(⑩) to the motor (⑨) with the 3 screws that just removed in last step.



Connect the wires from the light (③) to the wires on the bottom of the motor (⑨).



(4) Assemble the hanging parts:
the small hanging cup(①), the big haning cup (②),
a hanging lever (either ⑥ or ⑦ as per your requirements)



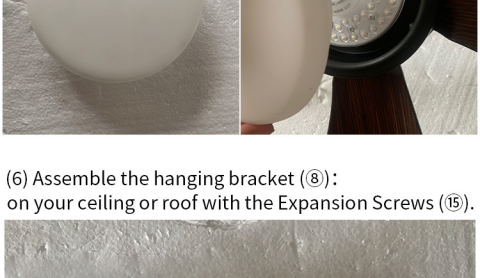
Firstly, remove the needle at the bottom of the lever;
Secondly, thread the 2 hanging cups (① & ②) into the lever from the bottom of lever to the top like the picture shows.



Make the wire on the motor go across the lever like the picture shows

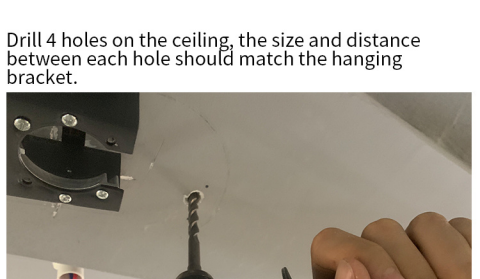


Insert the lever into the motor, then insert the needle/pin, and secured with the screws



(5) Assemble the light cover (⑤):

Align the light cover (⑤) and put it on, gently rotate the cover and tighten it securely with the lamp tray (⑩)

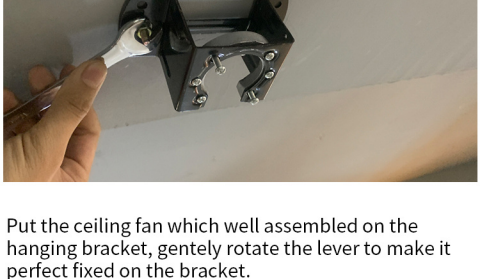


(6) Assemble the hanging bracket (⑧):

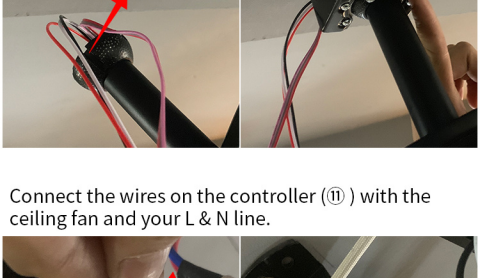
on your ceiling or roof with the Expansion Screws (⑮).



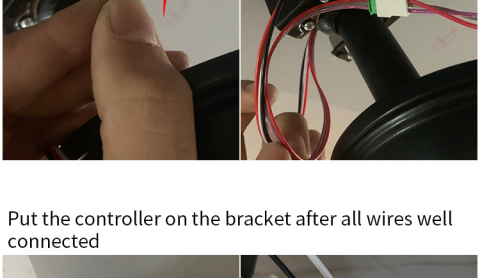
Drill 4 holes on the ceiling, the size and distance between each hole should match the hanging bracket.



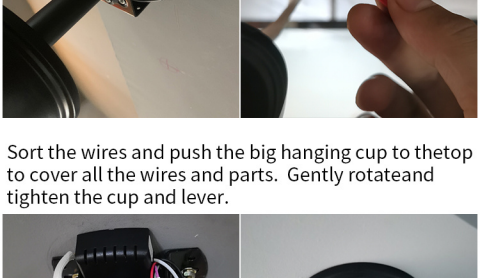
Hammer the 4 expansion screws into the holes you just drilled.



Assemble and tighten the hanging bracket.



Put the ceiling fan which well assembled on the hanging bracket, gently rotate the lever to make it perfect fixed on the bracket.



Connect the wires on the controller (⑪) with the ceiling fan and your L & N line.



Put the controller on the bracket after all wires well connected

Sort the wires and push the big hanging cup to the top to cover all the wires and parts. Gently rotate and tighten the cup and lever.

Fix and tighten the screws outside the big hanging cup ② to avoid it wobbling.

