

Parts List
Drawing



1.	CyberPack steering wheel		
2.	Accessory special tools		

1. Tools required for installation

Warping board, T20 screwdriver, adjustable wrench, H10 sleeve, flat-head screwdriver, T10 screwdriver, auxiliary special tools

Two, installation precautions Note: Please ensure that the power off operation, to prevent the failure of the airbag

Tip: In order to install more quickly, please be sure to read the instructions carefully.

Warnings and Disclaimers

Important notice: Welcome to purchase the company's products, in order to protect the legitimate rights and interests of users, in this special reminder to users, please be sure to carefully read and fully understand the terms of this statement before using this product. If you use this product, your use behavior will be regarded as the acceptance of the entire content of this statement, and agree to accept the following terms of this statement, and bear the effect caused by irregular use of the payment. Hanxiao Company reserves the right to update the above documents. Please be sure to operate this product according to the instructions. P.S. This wiring harness, buttons, module shell, etc. are gifts and are not covered by our warranty.

If the keys, harness, or module do not work, please use your own steering wheel accessories.

Use Precautions

1. Check whether the product list is complete and damaged before installation.
- 2, the installation instructions may be slightly different from the actual operation. If there are any differences, please refer to the actual situation or contact us.
- 3, Warning: Do not disassemble any parts by yourself, any improper operation is not covered by the warranty.
4. Watch the installation video and instruction manual before installing the product.
- 5, pay attention to replacing the steering wheel, do not turn the spring, to prevent the spring from breaking.
- 6, check whether the installed product function is normal, if there is a problem, please check whether the plug is inserted tightly.

Model 3Y CyberPack Styling Steering wheel - Product selling point



Year: 17+ M odel 3, 19+ M odel Y

Name: M odel 3/Y Universal CyberPack Styling Steering Wheel (5/7 removal hole)

M odel Y Universal CyberPack Styling Steering Wheel (6/6 removal hole)

Left and right navigation: No distinction Processor: no distinction

Product Features

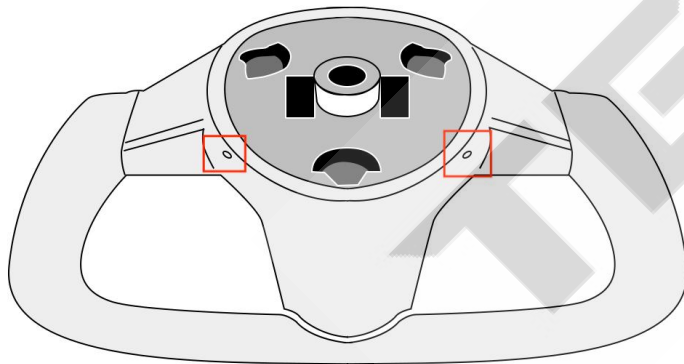
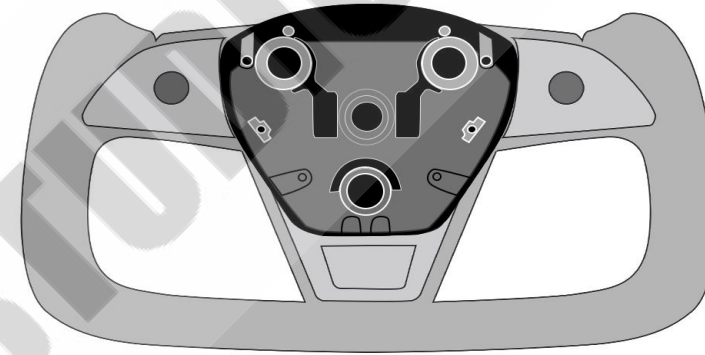
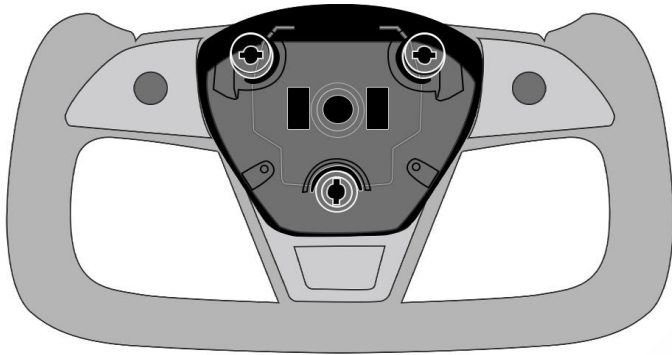
- 1, installation: special car, non-destructive installation, does not affect the function of the original car
- 2, experience: three-dimensional design, visual enhancement, wide vision
- 3, Material: flower needle sewing process (manual fine sewing), top NAPPA leather material, deep breathable, delicate texture, soft luxury, wear resistance and aging resistance
- 4, Function: support heating function (original support)
- 5, color: a variety of fashion color optional (optional)

Product Description

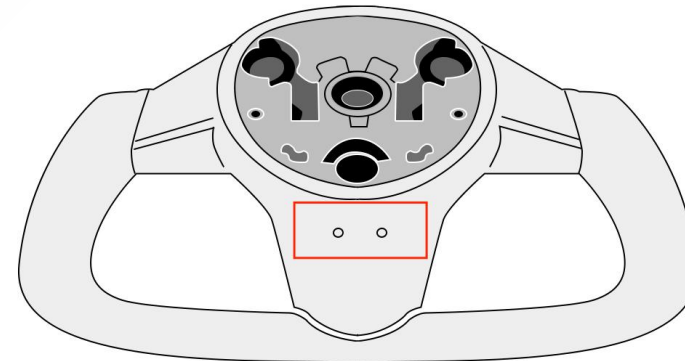
Special car, 1:1 original car mold, non-destructive installation, does not affect the function of the original car. Using the steering wheel of the car shape, three-dimensional design (the overall sense of motion vision, enhance the field of view more open, do not block the dashboard, you can see the mobile phone navigation or dashboard display). The skeleton is made of aluminum alloy, the use of top NAPPA leather material combined with soft feel and no slip (deep breathable, comfortable feel, strong grip, sweat absorption and no slip, a clean stain), wear resistance and aging (bending and bending $\leq 200,000$ times at room temperature, no crack $\leq 30,000$ times at low temperature). The original process stitching line (according to the arc of the original car, manual fine sewing), the interface is perfectly fitted (no sewing thread is left on the surface), the craftsman spirit is smooth, the grip is more three-dimensional and more comfortable.. With heating function by default, the heating wheel needs to use the heating harness and module of the original car

Note: A variety of fashion colors are available (as shown on the left)

The wheel disassembly needs to pay attention to the hole position, and the disassembly hole position is different for different types of steering wheels.



Exit holes located on both sides of the steering wheel (5/7 point removal holes)



The exit hole is located on the lower side of the steering wheel (6-point removal hole)



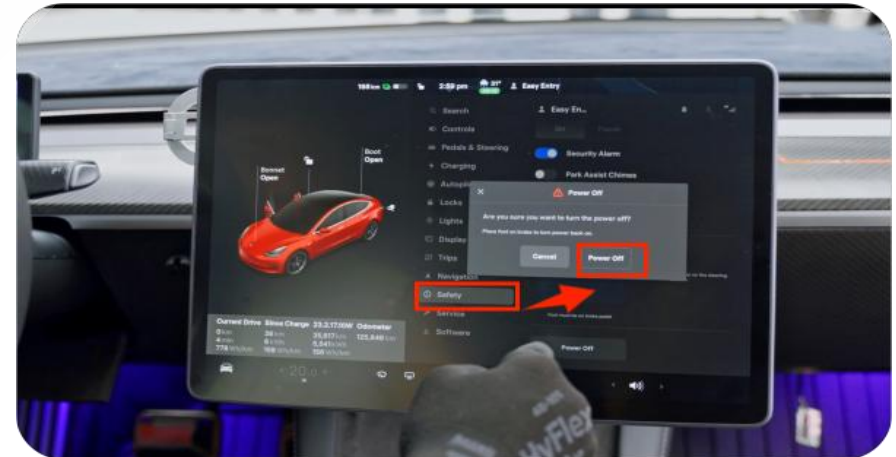
1, disassembling tools: warping board, T20 screwdriver, adjustable wrench, H10 sleeve, flat-head screwdriver, T10 screwdriver, complimentary tool (right)



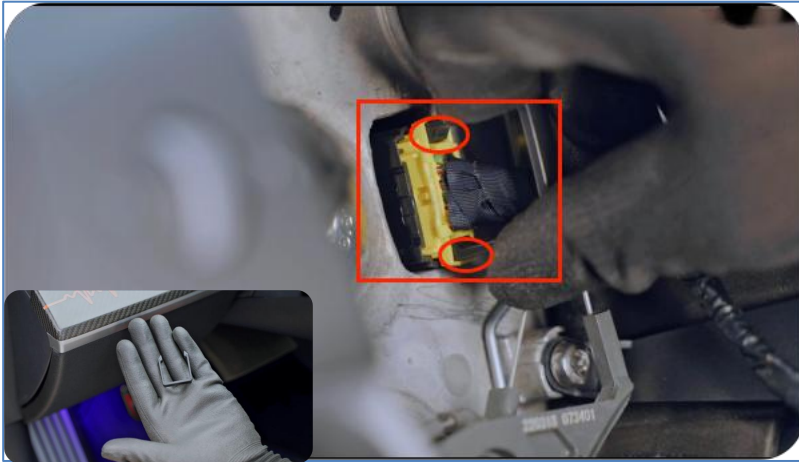
2. Insert the complimentary special tool into the holes on the left and right sides of the steering wheel and open the airbag cover



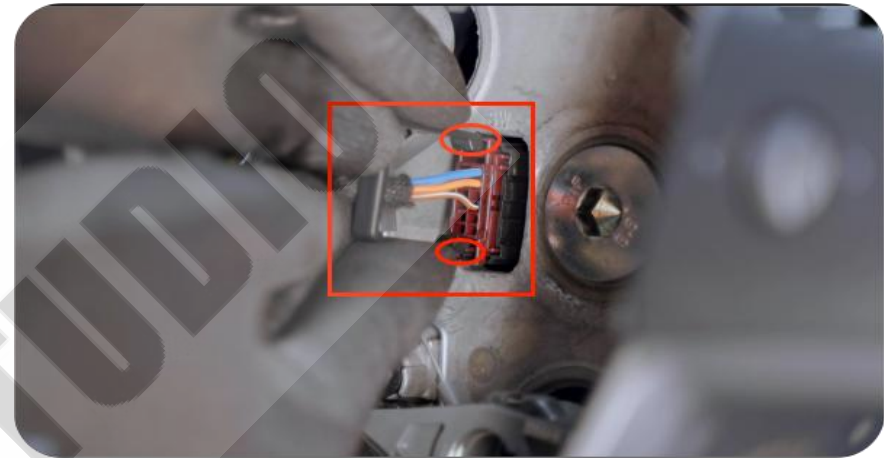
3. Lift the airbag up (note that the wiring harness is not removed at this time)



4. Choose to turn off the power on the machine interface



5. Use the complimentary plug pulling professional tool to insert into the buckle and gently pull the wiring harness to pull out the airbag plug



6. Use the complimentary plug pulling professional tool to align with the buckle and gently pull the wiring harness to pull out the roller key plug



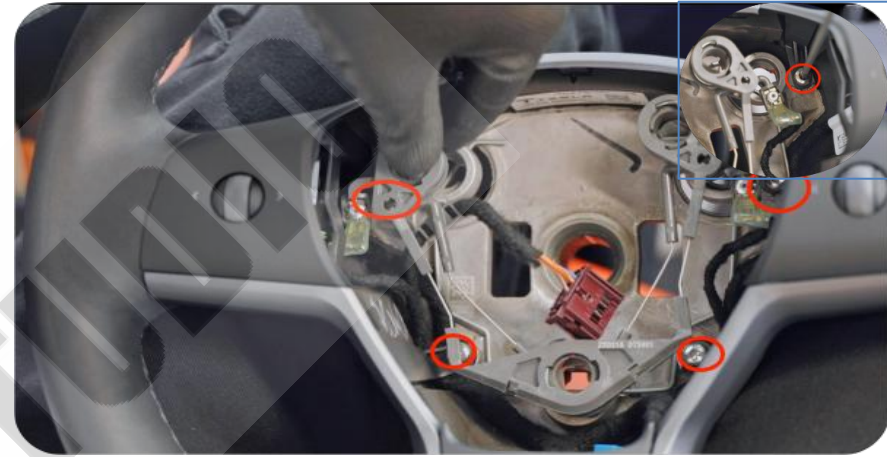
7. Use the H10 sleeve and adjustable wrench to unscrew the screw counterclockwise (you can hold both sides of the steering wheel with your legs)



8. Take out the steering wheel after shaking it from side to side



9. Use a flat-head screwdriver to pry open all 6 clip positions



10. Unscrew the four retaining screws with T20



11. Pry off the middle trim of the steering wheel with the warping board



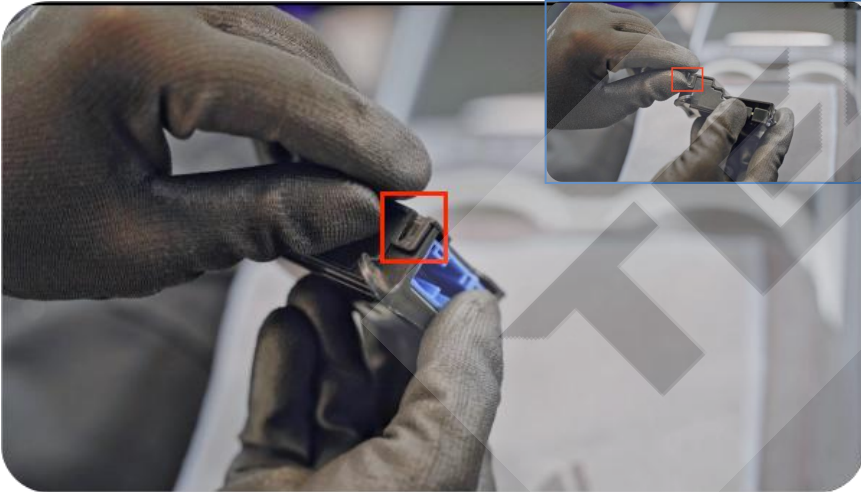
12. Unplug the control box



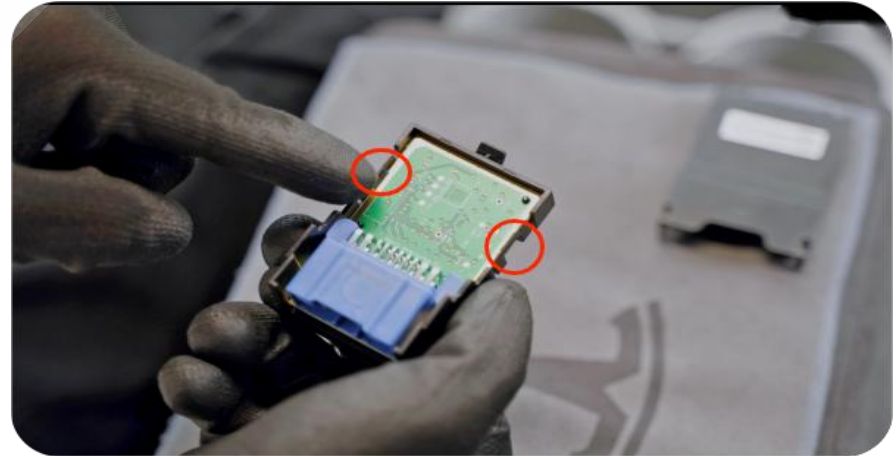
13. Remove the control box after unscrewing the 2 fixing screws with a T10 screwdriver



14. Break the two latches



15. Break the two clasps



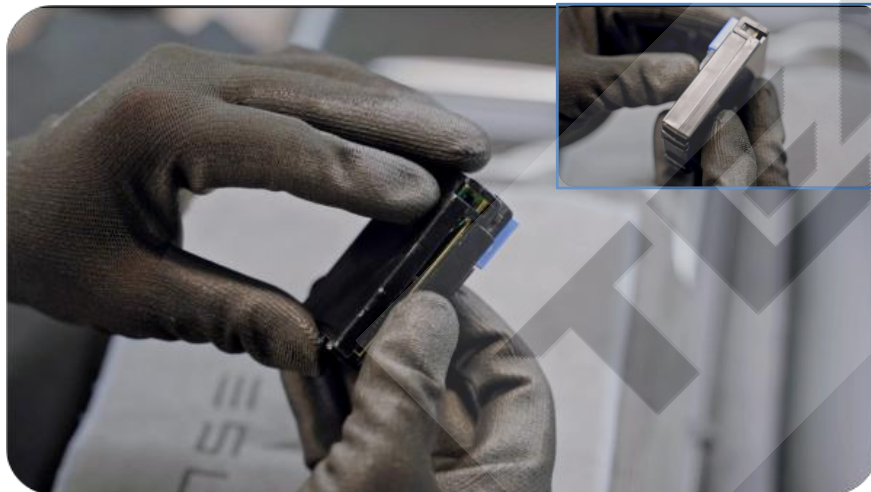
16. Open the two clasps on the electronic board



17. Take the electronic board up (note the dowel pins)



18. Install the removed original chip on the small control box



The design of the small control box is more compact, and the chip needs to be carefully installed (it needs to be tightly stitched).



20. Find the harness plug under the steering wheel of the new CyberPack



21. Insert the blue plug into the newly replaced control box



Remove the heating plug to facilitate the storage location of the subsequent control box



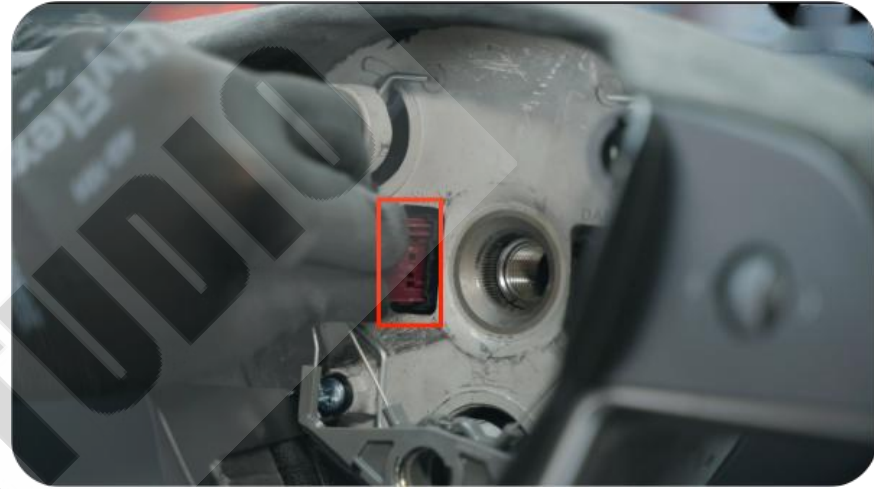
23, the control box first diagonally press down and then press it in above the press



24, the heating plug is plugged next to the control box



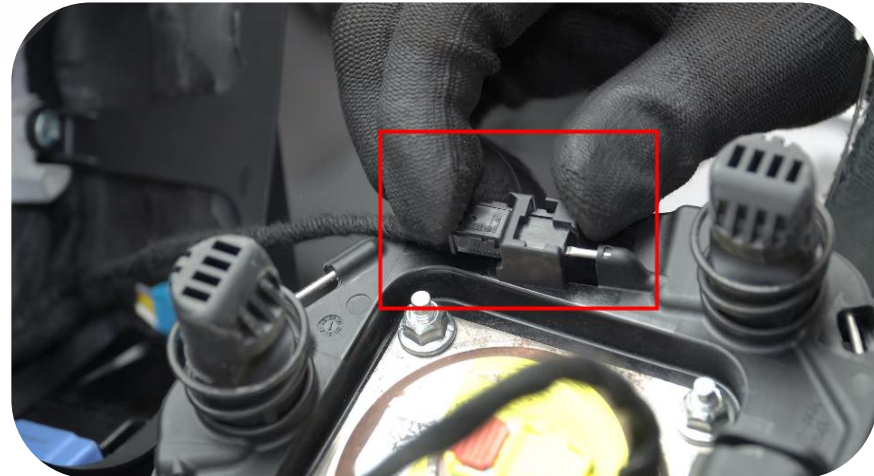
25. Align with the hole and press down



26. Plug in the roller button



27. Use the H10 sleeve and adjustable wrench to tighten the set screws clockwise (one person can hold the sides of the steering wheel with their knees)



28. Plug in the airbag



29. Insert the airbag plug into the steering wheel



30. Align the three holes and press the airbag in



31, installation complete

Questions	Causes	Solutions
The reverse dotted line is not displayed correctly	No alignment installed	When installing the disk, the center groove should be well concave
There is a gap between the key frame and the bare disk	The buckle is not properly fixed	Remove it and reinstall it
Leather is dirty and don't know how to maintain it	Long time use leads to	Can be purchased online foam cleaning agent cleaning (not with corrosive, to prevent damage to the leather)
Airbag cover can not open the problem	The clasp is in a tight position	After watching the installation video, find the appropriate tool to pry open the airbag cover
The plug cannot be removed	The plug has two slots	Hold one slot with a flat-head screwdriver and remove the other slot with your finger
Keys do not work	The harness or plug is damaged	Replace the wiring harness or plug of the original steering wheel
The fixing screws cannot be removed	There's too much glue on the inside	Avoid twisting the teeth, you can go to the service center to request twisting loose in their own