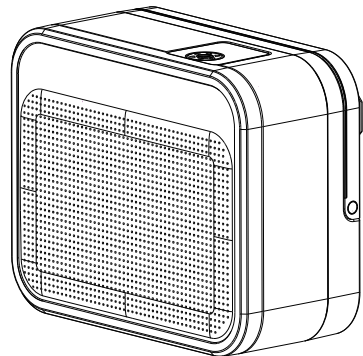


PRODUCT MANUAL

HOME LUXURY SCENTS

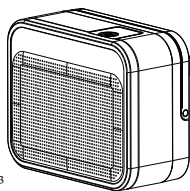


HLS3500+

- Do not mix the fragrance with any other liquid
- Do not remove any piece or part of the diffuser
- This diffuser is only for use with our Scent Collection

Specification

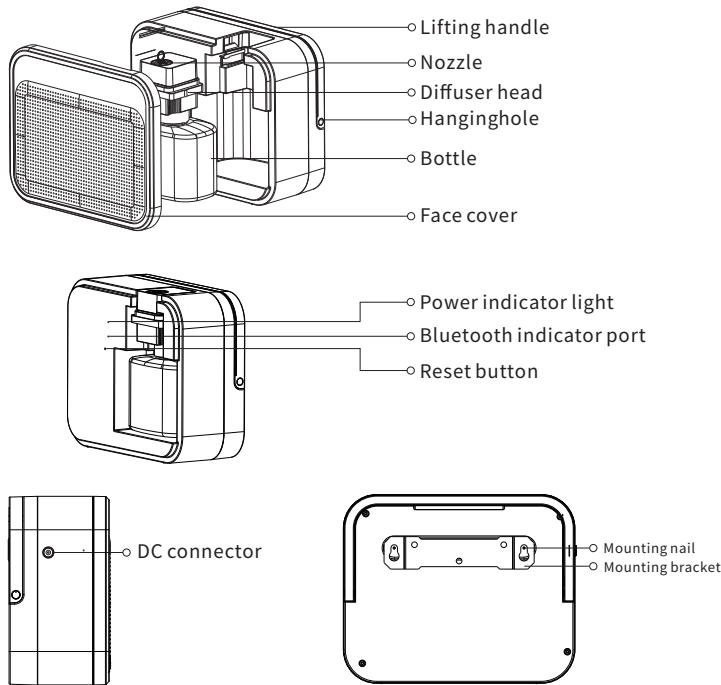
Model	HLS3500+
Size	288*125*233mm
Bottle	850ml
Power Adapter Input	100-240V~50/60Hz 1.0A
Power Adapter Output	12V \approx 2.0A
Input	12V \approx 2.0A
Power	12W
Coverage	800m ² /2400m ³ /84753.6ft ³
N.W.	2.314kg
Material	Plastic



Usage of sealing tape:

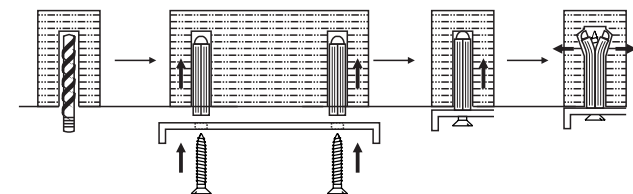
- Before replacing atomizing core, wrap sealing tape around atomized core thread about 3-5 turns to avoid air leakage;
- Before connecting atomized connector, wrap sealing tape around atomized connector thread about 3-5 turns to avoid air leakage.

Overview



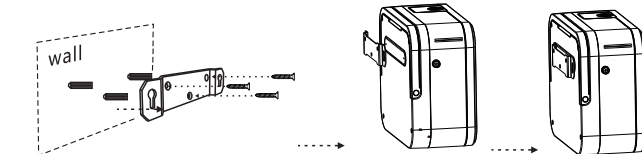
Installation

How to install the expansion anchors?



Drill into the wall, insert the expansion anchors into the hole, then place the screw into the expansion anchors and tighten it.

Installation steps



- Aim at the position of the mounting bracket, then drill the hole in the wall and insert the expansion bolts into the hole in the wall;
- Install the mounting bracket on the wall with screws, and finally hang the machine on the mounting bracket.

Bluetooth instruction

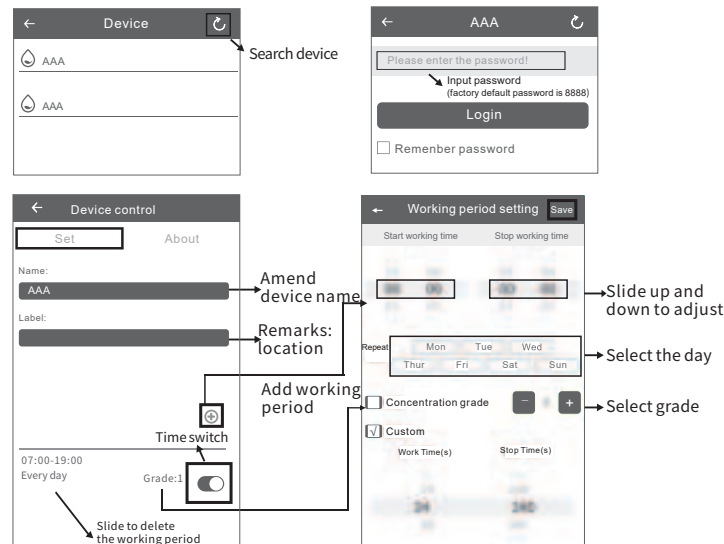
Where to get the app:

Please search "Home Luxury Scents" in Google play or App store.

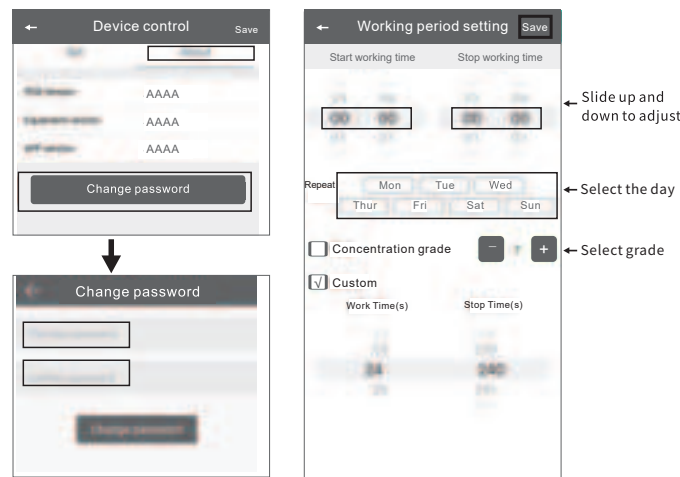


Note:

- Please make sure that the Bluetooth function is turned on;
- Please make sure that the location function of the mobile phone is turned on.



Amend password



If you forget the password, please press the reset button to restore the factory setting. The factory settings password is 8888.

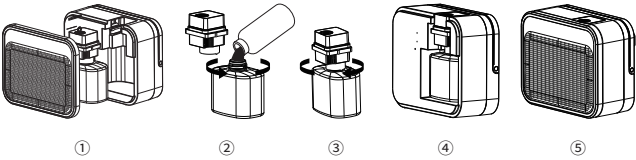
Concentration and consumption

Grade	Work time(s)	Stop time(s)	Consumption(g/h)
G1	15	300	0.3
G2	15	150	0.5
G3	20	120	0.8
G4	20	85	1.1
G5	25	80	1.4
G6	30	75	1.6
G7	30	60	1.8
G8	30	50	2.0
G9	30	40	2.3
G10	30	33	2.7
G11	33	30	3
G12	40	30	3.3
G13	50	30	3.6
G14	60	30	4.0
G15	75	30	4.4
G16	80	25	4.7
G17	85	20	5.0
G18	120	20	5.4
G19	150	15	5.8
G20	300	15	6.3

Note:

- The data shown above was obtained based on our testing essential oil
- The consumption rate of different essential oils varies, the above data is only for reference, the actual data may prevail.

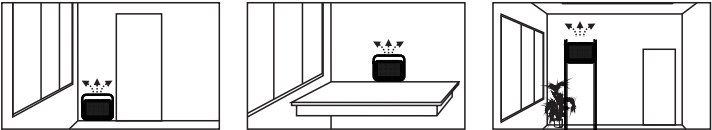
Instruction



- 1. Remove the top cover, then take out the atomized head and bottle. 2 . Rotate counterclockwise to remove the bottle cap, then pour in the essential oil.
- 3. Tighten the bottle cap by turning it clockwise.
- 4. Place the atomized head and bottle back into the machine.
- 5. Finally, close the cover (magnetic adsorption).

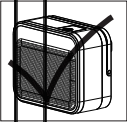
Direction

Idea for Hotels,Conference rooms, Malls, Exhibition halls, Majorretailers, Bars,SPAS, Business places or anywhere you wan to afragrance experience.



Warning

- 1.Please read the user manual before operation & maintenance;
- 2. Keep the machine vertical, laying flat may cause oil overflow;
- 3. Make sure the machine without essential oil inside the bottle before transportation;
- 4. Tighten oil bottle before use;
- 5. Clean the machine with alcohol every 1-2 months;
- 6. Do NOT modify, disassemble or repair the machine. If any failure occurs, please contact our technical personnel.
- 7.This appliance is not intended for use by persons (including children) with reduced physical. sensory or mental capabilities, or lack of experience and knowledge, unless they have been given supervision or instruction concerning use of the appliance by a person responsible for their safety.
- 8.Children should be supervised to ensure that they do not play with the appliance.
- 9.Do not tamper with any operating function of the machine.



Caution

- ⊘ Shall not modify, disassemble or repair the machine arbitrarily. Anyfailurehappens,please contacttechnicianin time.
- ⊘ Shall not damage the power cord, force to bend,yank, heavy load, clip orreprocess.
- ⊘ Shall notuse damaged plugorunmatched with the socket; Shall not wet the machine or the plug; Shall not use overloaded power socket, wire or broken plug
- ⊘ Shall not touch the wire or product shell when thunderingor/and lightening.
- ⊘ Shallnot disassemble the machine when itis under operating

Troubleshooting

Before asking to have the machine repaired, please try to diagnose the problem first by following the instructions below.

Breakdown	Solution
Does not diffuse	-Check whether the mode you chose correct or not. -Check if the machine is in a "Non-Working period". -Air pump may be damaged, replace with a new one. -Check whether the tube is loose or not.
Low diffuse	-The atomizing core is blocked, clean with alcohol or change to a new atomizer heads. -Check whether the gasket is damaged/loose or missing. -Check whether the tube is loose or not connected.
Oil spill	-Check whether the bottle is loose . -Check if the gasket in the atomized head is damaged, loose or missing.
Oil sprinkle	-The atomized head is damaged: change to a new one. -The machine is tilled or laying flat, keep the machine vertical.
Abnormal noise	-The air pump is loose, retighten the pump -The air pump is damaged:replace.

Equipment cleaning

The machine needs to be cleaned when these conditions exist:

- 1. You're changing to another kind of essential oil;
- 2. The atomization volume becomes weak .

Cleaning steps:

- 1. Pull out the atomized head.
- 2. Find a larger container and fill with industrial alcohol. Soak the atomized head and the bottle for 5-10mins.
- 3. Allow the atomizer head and the bottle to dry.

ISED Statement

English: This device contains licence-exempt transmitter(s)/receiver(s) that comply with Innovation, Science and Economic Development Canada’s licence-exempt RSS(s). Operation is subject to the following two conditions:

(1) This device may not cause interference.

(2) This device must accept any interference, including interference that may cause undesired operation of the device.

The digital apparatus complies with Canadian CAN ICES-3

(B)/NMB-3(B).

French: Cet appareil contient des émetteurs/récepteurs exempts de licence qui sont conformes aux RSS exemptés de licence d'Innovation, Sciences et Développement économique Canada.

L'exploitation est soumise aux deux conditions suivantes :

(1) Cet appareil ne doit pas provoquer d'interférences.

(2) Cet appareil doit accepter toute interférence, y compris les interférences susceptibles de provoquer un fonctionnement indésirable de l'appareil.

l'appareil numérique du ciem conforme canadien peut -3 (b) / nmb

- 3 (b).

This device meets the exemption from the routine evaluation limits in section 2.5 of RSS 102 and compliance with RSS 102 RF exposure, users can obtain Canadian information on RF exposure and compliance.

cet appareil est conforme à l'exemption des limites d'évaluation courante dans la section 2.5 du cnr - 102 et conformité avec rss 102 de l'exposition aux rf, les utilisateurs peuvent obtenir des données canadiennes sur l'exposition aux champs rf et la conformité.

This equipment complies with Canada radiation exposure limits set forth for an uncontrolled environment.

Cet équipement est conforme aux limites d'exposition aux rayonnements du Canada établies pour un environnement non contrôlé.

This equipment should be installed and operated with minimum distance 20cm between the radiator & your body.

Cet équipement doit être installé et utilisé à une distance minimale de 20 cm entre le radiateur et votre corps.

FCC Statement

This device complies with part 15 of the FCC Rules. Operation is subject to the following two conditions:

(1) This device may not cause harmful interference, and

(2) this device must accept any interference received, including interference that may cause undesired operation.

This equipment has been tested and found to comply with the limits for a Class B digital device, pursuant to part 15 of the FCC Rules. These limits are designed to provide reasonable protection against harmful interference in a residential installation. This equipment generates, uses and can radiate radio frequency energy and, if not installed and used in accordance with the instructions, may cause harmful interference to radio communications. However, there is no guarantee that interference will not occur in a particular installation. If this equipment does cause harmful interference to radio or television reception, which can be determined by turning the equipment off and on, the user is encouraged to try to correct the interference by one or more of the following measures:

- Reorient or relocate the receiving antenna.
- Increase the separation between the equipment and receiver.
- Connect the equipment into an outlet on a circuit different from that to which the receiver is connected.
- Consult the dealer or an experienced radio/TV technician for help.

FCC Caution: Any changes or modifications not expressly approved by the party responsible for compliance could void the user's authority to operate the equipment. This transmitter must not be co-located or operating in conjunction with any other antenna or transmitter. Not applicable

RF Exposure

This device complies with FCC radiation exposure limits set forth for an uncontrolled environment. This equipment should be installed and operated with minimum distance 20cm between the radiator & your body.