

A172-UG-VR-D1-BF Series

BASE MODEL A172400S-UG-VR-D1

BARRIER FREE, VANDAL RESISTANT, UNIVERSAL BI-LEVEL, WALL MOUNTED DRINKING FOUNTAIN WITH VANDAL RESISTANT, PUSHBUTTON OR SENSOR OPERATED BOTTLE FILLER

STANDARD FEATURES

Drinking Fountain

- Rough-Ins Match Other Manufacturer's for Easy Replacement
- EZ Door® Filter, 30-Second Filter Replacement Option
- Child or Adult ADA Compliant (When Properly Installed)
- Universal Bi-Level - Can Be Installed Left Unit High Right Unit Low Or Opposite With No Additional Parts Required.
- Apron and One-Piece Bottom Wrapper is Satin Finish
- 304 Stainless Steel Basin and Flush Mounted Chrome Plated Brass Button
- Polished Stainless Steel, Anti-Rotation, Non-Squirt Bubblers
- Auto-Stop Allows Cartridge and Strainer Service Without Removing Drinking Fountain Deck To Access Water Supply Stop
- Lead-Free

Bottle Filler

- Hands-Free Sensor or Pushbutton Operated
- ADA Reach Compliant
- 100-Mesh Inlet Strainer
- 1 GPM Laminar Flow
- 115V Plug-In Transformer with -BF2S Only

SUGGESTED SPECIFICATIONS

Drinking Fountain

Model A172400S-UG-VR-D1 is a self-contained Bi-Level Drinking Fountain. Units shall be activated by Vandal Resistant Chrome Plated Brass Front Pushbuttons by using less than 5 pounds of force. Lead-Free Stainless Steel Bubbler shall deliver 0.5 GPM flow, have an integrally designed Non-Squirt feature and operate on a water pressure range of 20-105 PSIG. Basins shall be constructed from 304 Stainless Steel and have an Integral Drain. Cabinet shall be Stainless Steel with Satin Finish. Unit is certified to ANSI A117.1, Public Law 111-380 (NO-LEAD), CHSC 116875 and NSF/ANSI 61, Section 9. Fixture meets ADA, ADA Standing Person, and ADA Child requirements when mounted appropriately.

Bottle Filler BF1S

BF1S is a Pushbutton Operated Bottle Filler. Housing construction is heavy gauge Stainless Steel with a satin finish. Bottle Filler shall be activated using a pneumatically operated Hemispherical Pushbutton using less than 5 pounds of force. Bottle Filler shall provide approximately 1 GPM flow rate with a Laminar Flow Spout to minimize splashing.

Bottle Filler BF2S

BF2S is a 9 volt Sensor Operated Bottle Filler. Housing construction is heavy gauge Stainless Steel with a satin finish. Optional -BCD (Bottle Counter Display) indicates the quantity of 16 oz. disposable Plastic Bottles saved from a landfill and also displays the Water Filter status. Bottle Filler shall provide approximately 1 GPM flow rate with a Laminar Flow Spout to minimize splashing.

Complies with the following standards:



Federal Public Law 111-380 (No Lead) C



NSF/ANSI/CAN 61



Model A172400S-UG-VR-D1-BF1S Shown
PATENT# 10,100,933



Maintenance Advantage®
Water Cooler by Murdock Manufacturing

MODEL: "RATED FOR INDOOR OR OUTDOOR USE"
(Must Specify)

STAINLESS STEEL BUBBLER

- ☐ A172400S-UG-VR-D1 Satin Stainless Finish (Standard)

FLEXIBLE BUBBLER

- ☐ A172400F-UG-VR-D1 Satin Stainless Finish

MUST SPECIFY BOTTLE FILLER:

- ☐ BF1S Bottle Filler with Pushbutton Operation
☐ BF2S Bottle Filler with Sensor Operation
☐ BF2S-BAT Bottle Filler with Battery Operated Sensor Operation
☐ BF2S-BCD Bottle Filler with Sensor Operation with Bottle Counter Display

OPTIONS: (Additional costs may apply.)

- ☐ -LOGO Customer Specified Logo / Graphics

ACCESSORIES:

(Additional costs may apply. Accessory items are packaged separately.)

- ☐ -WF1EZ 1500-Gallon Capacity Easy Door® Filter¹
30-Second Replacement (Patent Pending)
☐ -WF3 3000-Gallon Capacity Water Filter¹
☐ -SK5 Cane Detection Skirt for Upper Unit¹
 Skirt finish provided to match Model selected above
 (P.N. A000G000-SK5 Gray, A0004000-SK5 Satin Stainless)

NOTES:

1- Refer to Supplemental Submittal Sheet for details.

Compatible Mounting Support Carrier

Jay R. Smith Mfg. Co. Figure # 0834-4P <https://www.JRSmith.com>

NOTE: Units installed with exposure to extreme hot or cold temperatures require adequate protection. Units are not freeze resistant. Refer to Installation Instructions for complete details.

Product Warranty

Accessibility Compliance is subject to local Code Enforcement Authority.

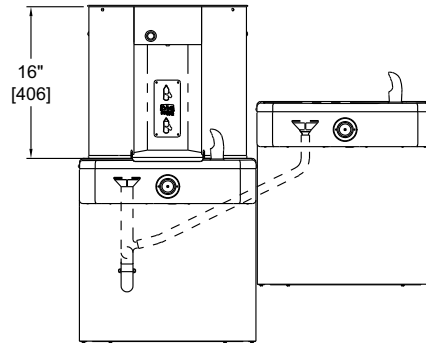
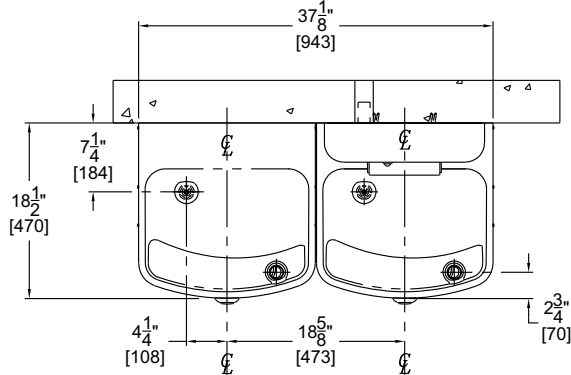
WARNING: Cancer and Reproductive Harm - www.P65Warnings.ca.gov

A172-UG-VR-D1-BF Series

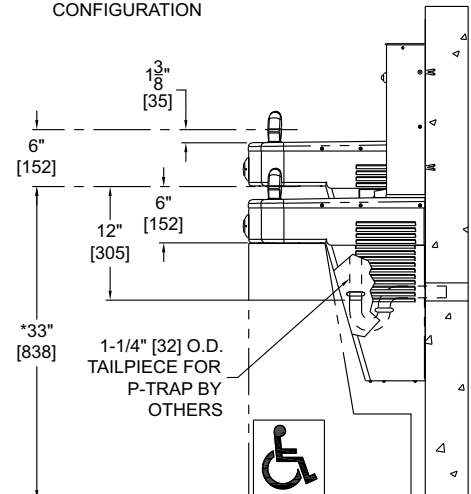
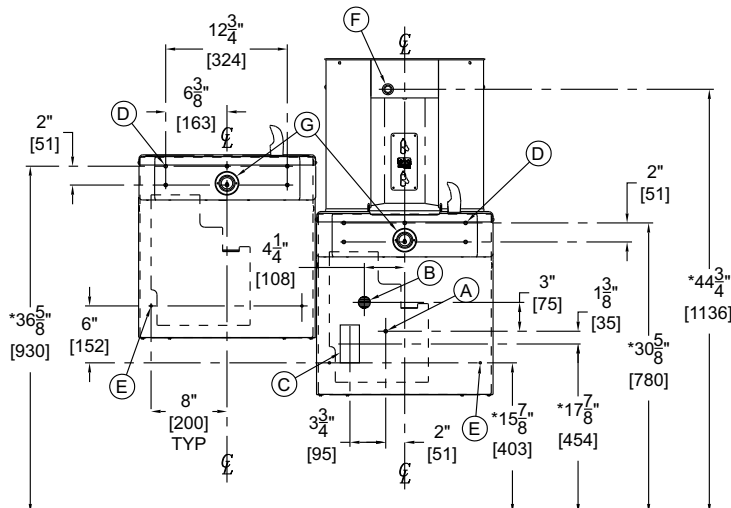
BASE MODEL A172400S-UG-VR-D1

BARRIER FREE, VANDAL RESISTANT, UNIVERSAL
BI-LEVEL, WALL MOUNTED DRINKING FOUNTAIN WITH
VANDAL RESISTANT, PUSHBUTTON OR SENSOR
OPERATED BOTTLE FILLER

A172400S-UG-VR-D1-BF1S SHOWN



ALTERNATE MOUNTING
CONFIGURATION



GENERAL NOTES:

1. ALL DIMENSIONS ARE IN INCHES [MM]
2. ALLOW 4 INCHES [102MM] MINIMUM CLEARANCE PER SIDE FOR VENTILATION
- *3. DIMENSIONS SHOWN ARE FOR ADA ADULT HEIGHT. ADJUST VERTICAL DIMENSIONS AS NECESSARY TO COMPLY WITH FEDERAL, STATE & LOCAL CODES
4. STOP VALVE, P-TRAP & ELECTRICAL OUTLET NOT SUPPLIED
5. IMPORTANT: COOLERS MUST BE ATTACHED TO WALL WITH APPROPRIATE ANCHOR SCREWS

- A. 3/8" O.D. SUPPLY INLET
- B. WASTE OUTLET FOR P-TRAP BY OTHERS FOR PROVIDED 1-1/4" O.D. TAILPIECE
- C. ELECTRICAL SERVICE ROUGH
- D. Ø3/8" HANGER BRACKET PUNCHING, 6 PLACES ON EACH FIXTURE FOR ANCHORING HARDWARE BY OTHERS
- E. Ø1/4" PUNCHING, 2 PLACES ON EACH FIXTURE FOR ANCHORING HARDWARE, BY OTHERS
- F. BOTTLE FILLER PUSHBUTTON
- G. VANDAL RESISTANT PUSHBUTTON CARTRIDGE

IMPORTANT: Dimensions are shown for reference only. Refer to product Installation Manual for complete details prior to Rough-in.

SELECTION SUMMARY
& APPROVAL FOR
MANUFACTURING

Model Number & Options _____	Quantity _____
Company _____	
Contact _____	Title _____
Signature (Approval for Manufacturing) _____	Date _____

All dimensions are subject to manufactures tolerance of plus or minus 1/4" nominal and subject to change without notice. Murdock® assumes no responsibility for use of void or superseded data. Dimensions may change with the addition of optional accessories. Murdock® Mfg., Member of Morris Group International®. Please visit www.murdockmfg.com for most current specifications.