



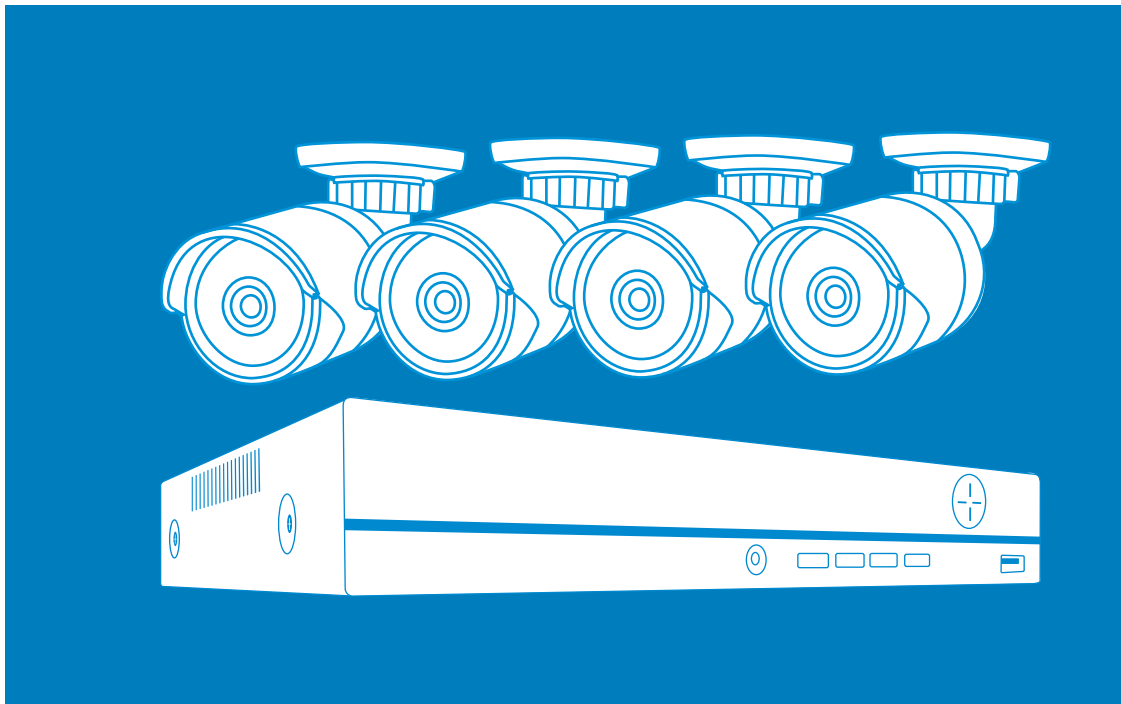
[www.techage.com](http://www.techage.com)  
[support@techage.com](mailto:support@techage.com)



User Guide

# PoE AI Camera System

Security Expert for Your Home and Business



[www.techage.com](http://www.techage.com)

# Table of Contents

- 01. Connect Your System
  - 02. View on Smartphone
  - 03. View on PC Client Software
  - 04. Video Record
  - 05. View on PC via IE
  - 06. Video Playback
  - 07. Video Backup
  - 08. Unique Features
-

## Preface

Thank you for purchasing Techage PoE AI security camera system. Techage is committed to providing customers with high quality and reliable security products and solutions for home and business.

This quick user guide will help you learn fast and make it work easily. For detailed and latest user manual, you can download the PDF user manual on our website : [www.techage.com](http://www.techage.com)

If you have any troubles when following this user guide, please visit our website : <http://techage.com/support.php>. You can find FAQ answers, videos, software and documents needed.

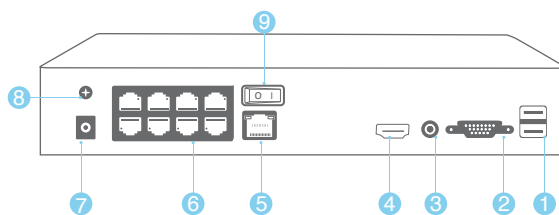
If you need customers support, email us and we will respond within 24h.  
Email : [support@techage.com](mailto:support@techage.com)

This quick user guide is subject to change without previous notice due to hardware and software upgrade.

## Before Installation

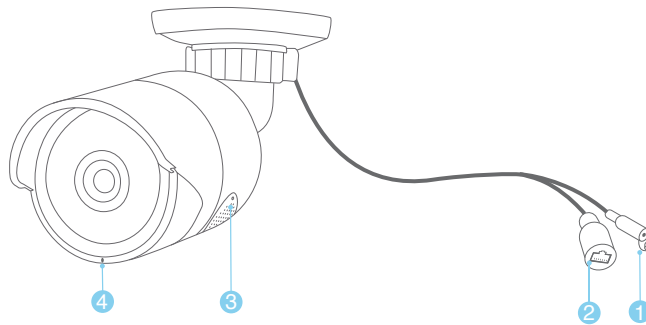
The PoE Camera System is a true plug and play professional AI security video surveillance system. It is highly recommended that all products and components to be tested before installation and cabling.

## PoE NVR



- |  |   |
|--|---|
| 1. Two USB Ports                       | 6. PoE Cameras Ports                                |
| 2. VGA Port                            | 7. Power Port : Power Adapter for NVR(48V or above) |
| 3. Audio Out                           | 8. GND  |
| 4. HDMI Port for Display               | 9. Power Switch                                     |
| 5. Ethernet Port for Connecting Router |   |

## PoE AI Camera



1. DC Power Port: Power Input 12V 1A.
2. RJ45 Port: Ethernet cable for video transmit and 48V DC Power Supply from NVR.
3. Speaker: For two way talk, alert voice play and broadcast
4. Microphone: For picking up audio (For different models of cameras, the mic position may be different.)

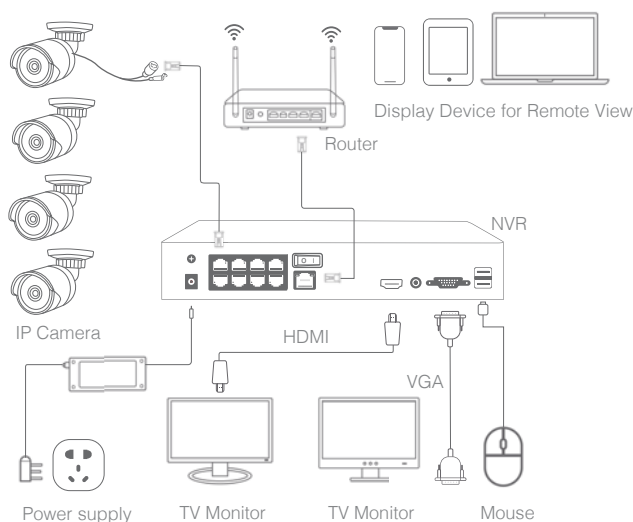
This PoE camera is a AI camera, with flood light on in the night after human detect. Human detect is a smarter way to detect human motion with AI tech. It is much more accurate than motion sensor and common motion detection and no false alarm because of pets.

This AI camera is with a speaker, which is for two way talk and alert voice play. When human detect or alarm, it will play alert voice message like : "Alert area, please leave" or "Hello, welcome !" if this feature is turned on. (As factory defaults it is off.)

### Tips:

Detailed settings on flood light on/off and alert voice, please refer to Chapter 08.

## 01 Connect Your System



### 1. Connect Your System

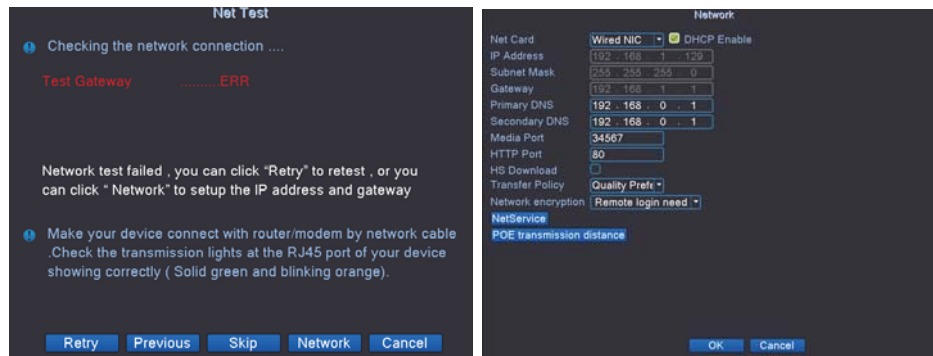
- 1.1 Connect the PoE cameras to their ports with Ethernet cables in the security kit.
- 1.2 Plug the mouse (included) into the USB port at the rear panel of the NVR.
- 1.3 Connect the LCD Display to the NVR and power it on.
- 1.4 Connect the NVR to the router with the Ethernet cable.
- 1.5 Plug the power adapter cable into the NVR DC port. Then plug power adapter into power strip. There is only one power adapter in the system which is DC48V or above and for the NVR only.
- 1.6 Turn on the NVR power switch.

All the PoE Cameras in the kit have already been programmed into the NVR after you power on the NVR. There will be live video images shown on the monitor in seconds.

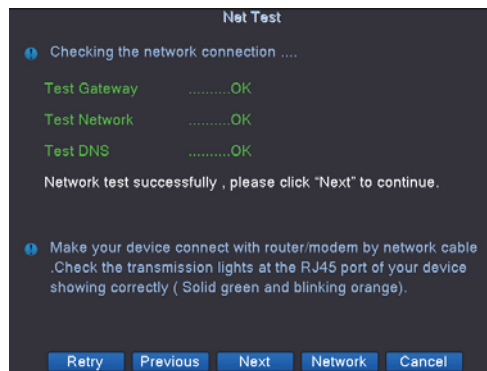
### 2. Connect the NVR to Internet

After steps above, the system is on and the video images shown up, you can right click the mouse, choose the "start wizard" and follow it. In the step for "Network Test", it may show you "Test Gateway . . . ERR", click "Network" to do the network settings and enable the "DHCP",

then click "OK".



And then click "Retry", it will show all ok. And that means the NVR is connect to internet successfully.



### 3. Add an Additional PoE Camera to the NVR

3.1 When you need to add an additional PoE camera

- ① Add a new additional PoE camera to your NVR system.
- ② When a PoE camera lost connection with the NVR or reset to factory defaults. You need to add it to the NVR again.

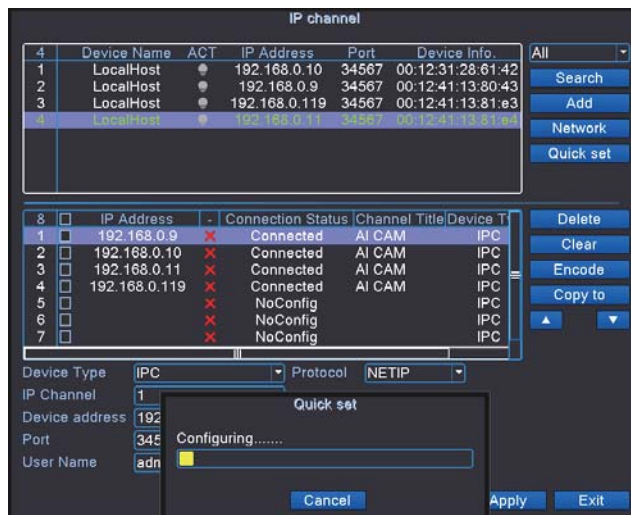
#### Tips:

All the PoE cameras in the packed kits have already been programmed into the NVR. So cameras will auto connect to NVR after the NVR is powered on. You do not need to add it again.

### 3.2 How to add an additional camera.

Use the Ethernet cable to connect the PoE Camera into the NVR camera ports or to the parts of PoE switch that connect to the same router with the NVR.

Click "+" on the channel that with no video and you want to add the camera in, then it will start search the PoE cameras that connected in the same network. On the cameras list, the ones already connected to the NVR will show in below list and showed "connected", you can choose the new additional one that not connected and just click "Quick set", it will start add it into the PoE NVR automatically. Click "OK" and then apply to finish it.



## 4. Installation

### 4.1 Find the proper spots for cameras and position for NVR.

First check the cameras spots where you want to monitor and then decide where to put your NVR. So that all the cameras are within the NVR's access with the Ethernet cables in the kit. Or you need additional Ethernet cables for extension if the cables in the kit can not make it.

### 4.2 Wiring the cameras and NVR

After finding the best positions for cameras and NVR, you can start the wiring work for cameras to NVR and NVR to the router.



#### 4.3 Connect cables and power on NVR

After wiring, connect the Ethernet cables into each cameras and the NVR to the router. Plug in the power supply for NVR and power on the system and you will get the live videos images and enjoy the video surveillance.

##### Tips:

When you install the PoE cameras outdoor, you will need the waterproof lids for them. Here below is the diagram for your reference.



## 02 View on Smartphone

### 1. Add the NVR to APP

Step 1: Download the APP

In the "Start Wizard", there is the step for "Install mobile app", scan the QR code with your smartphone to download the app. Or search the "XMEye" in app store or google play and download it.



## Step 2: Run the app and add the device

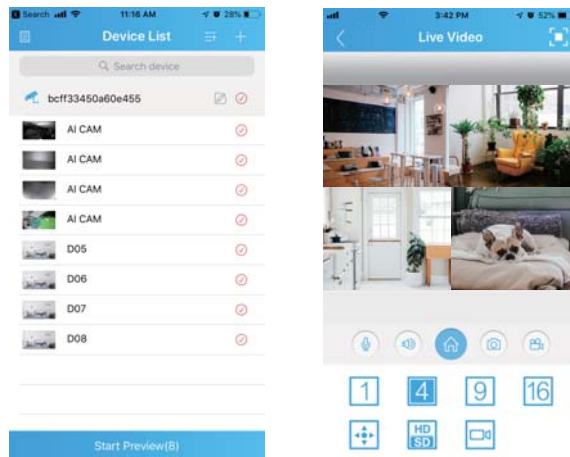
After you download the app, create an account and then scan the device's serial No. QR code to add the device. You can do some changes make your own profile.




1. Name of the System , you can name it like : My Home or Office so on.
2. The serial number of the device , you can find it in the step of "install mobile app" in the "start wizard".
3. User name of the account in the device ,as default it is "admin"
4. Password, as default is none, just leave it blank.

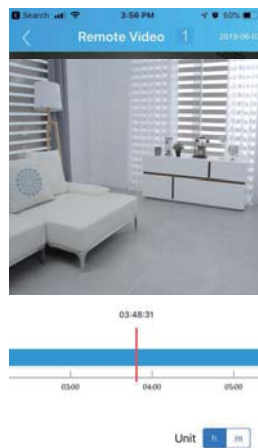
After all done ,then click "OK", it will go to the device list . You can choose which channel you want to view, choose how many channels of live videos you want to view at a time like 4, 9 or 16 channels, and can change the video quality between HD (High Definition) and SD (Standard Definition).

After you click "Start Preview" , you can see live images, do intercoms , screenshot and video record for the channels selected.



## 2. Playback on Mobiles

In the XMEye app, choose the channel of the video you want to playback , click  and then change the time frame to choose the time of the video you want to playback.



### Tips:

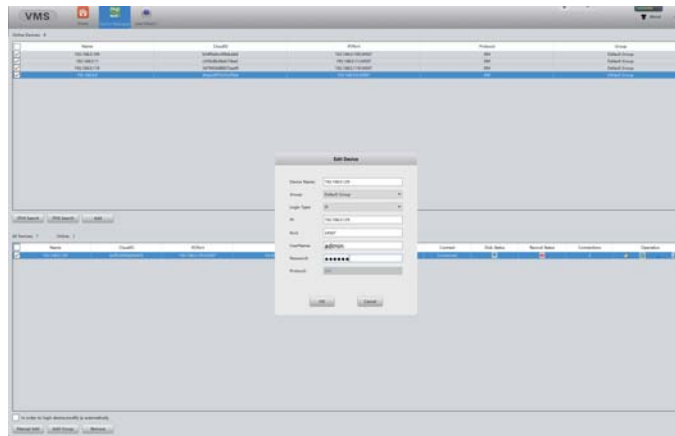
Videos in playback are HD and real time which requires very good network conditions. We suggest to playback in LAN. Remote playback in WAN mainly depends on network conditions


## 03 View on PC Client Software

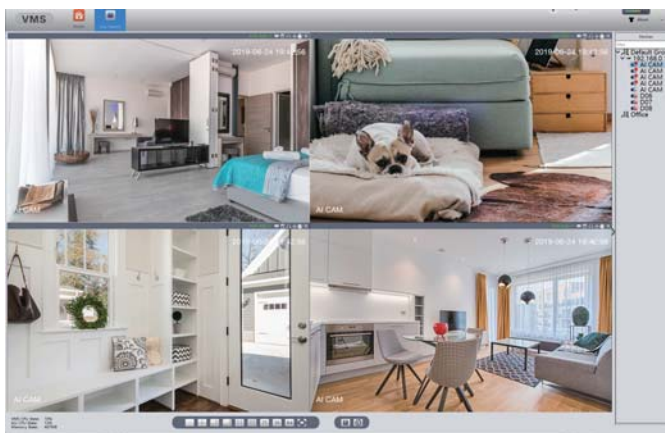
Step 1: Download VMS software from <http://techage.com/download.php>

After opening the VMS software, click on Login directly.

Step 2: Choose Device Manager>IP4 search, then find your NVR and choose it , click "Add".



After that then click the  to edit the device if you've already changed the password of the NVR. And then back to Home page and click "Live View" and you can view all the cameras in the NVR.



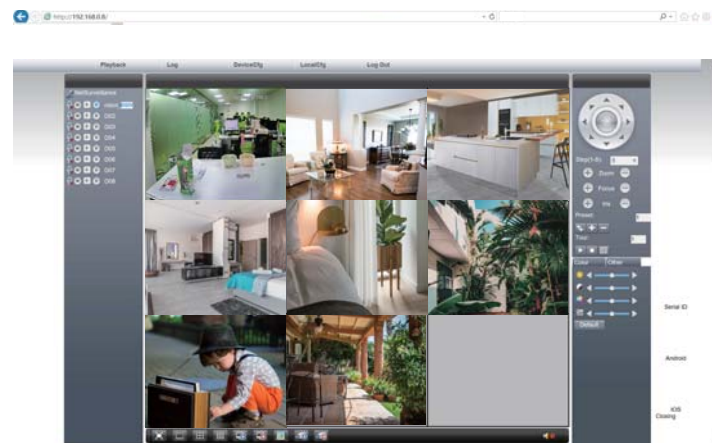
## 04 View on PC via IE

1. When your PC is in the same LAN as the NVR (normally it means they are connected to the same router).

Step 1: Find the IP address and Web port of your NVR (IP address can be found in Main Menu>Network).



Step 2: Enter the NVR's IP address in your IE browser in format http://IP Address, for example: http://192.168.0.8



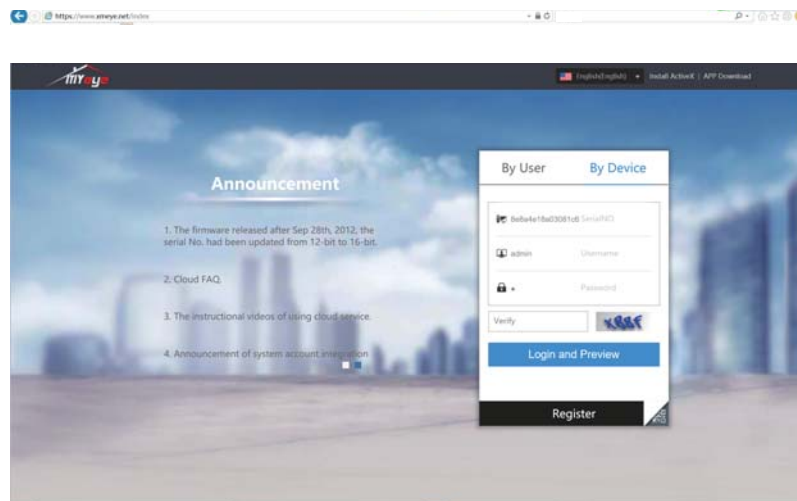
User Name: Enter the NVR's User Name (default: admin)

Password: Enter the NVR's Password set (default: No password required, just leave blank.)

2. When your PC is not in the same LAN as the NVR (For example, in the case that you want to remotely view your home camera on your office computer.)

Step 1: Open your Internet Explorer (IE) browser and visit [www.xmeye.net](http://www.xmeye.net)

Step 2: Input NVR's series No., Username and Password to login.



Step 3: If this is the first time you use the program, please download and run ActiveX control and follow the popup message.

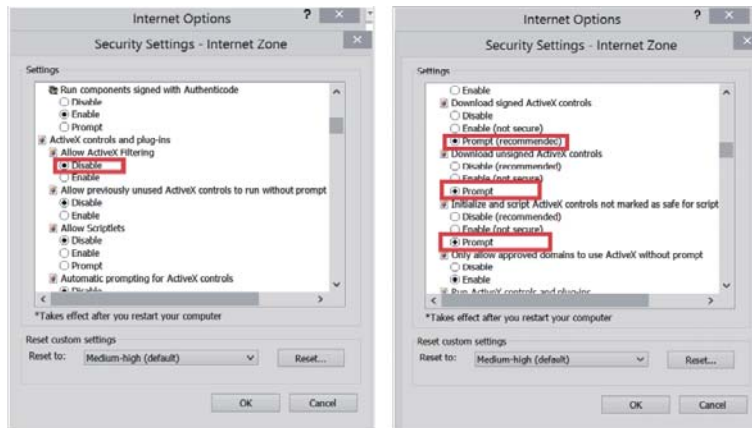
① Click Tools > Internet Options > Security > Internet > Custom Level.

② Scroll down the mouse until you see ACTIVEX CONTROLS AND PLUG-INS.

(If you have Internet Explorer version 9 or 11, change ALLOW ACTIVEX FILTERING to DISABLE. Other versions of IE browser do not have this option.)

③ Change the following ACTIVEX controls to PROMPT:  
Download signed ACTIVEX controls  
Download unsigned ACTIVEX controls  
Initialize and script ACTIVEX controls not marked as safe for scripting

Step4: Please click OK, and exit the "Security Settings" menu when you complete the settings.



## 05 Video Record

### 1. HDD Install

The system may not include HDD if you did not select the kit with HDD. The system can work with 3.5" or 2.5" SATA Hard Drive.

- ① Unplug your NVR from power, unscrew and remove the top cover.
- ② Connect the SATA power and data cables from the NVR to the corresponding ports on your HDD
- ③ Holding the hard drive and the NVR , gently turn it over and line up the holes on the hard drive with the holes on the NVR. Use a phillips screwdriver, screw the provided screws into the holes and assemble the cover

#### Tips:

New HDD has to be formatted before recording. You can go to "Main Menu">"Advanced">"HDD Info"> Select the HDD and then "Format Storage"

### 2.Record Video

Find "Main Menu" > Record Conf.> you can schedule the record period and what to drive the starting of the record, like regular or motion detection or alarm. You can set these for different channels.

**Record Conf.**

Channel  Redundancy ☐

Length  min

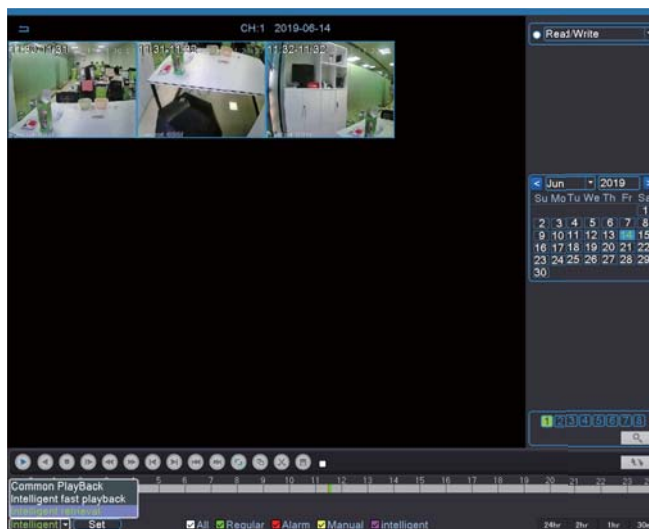
Mode ☒ Schedule ☐ Manual ☐ Stop

Week  Regular Detect Alarm

Period 1	<input type="text" value="00:00 - 24:00"/>	<input checked="" type="checkbox"/>	<input checked="" type="checkbox"/>	<input checked="" type="checkbox"/>
Period 2	<input type="text" value="00:00 - 00:00"/>	<input type="checkbox"/>	<input type="checkbox"/>	<input type="checkbox"/>
Period 3	<input type="text" value="00:00 - 00:00"/>	<input type="checkbox"/>	<input type="checkbox"/>	<input type="checkbox"/>
Period 4	<input type="text" value="00:00 - 00:00"/>	<input type="checkbox"/>	<input type="checkbox"/>	<input type="checkbox"/>

## 06 Video Playback

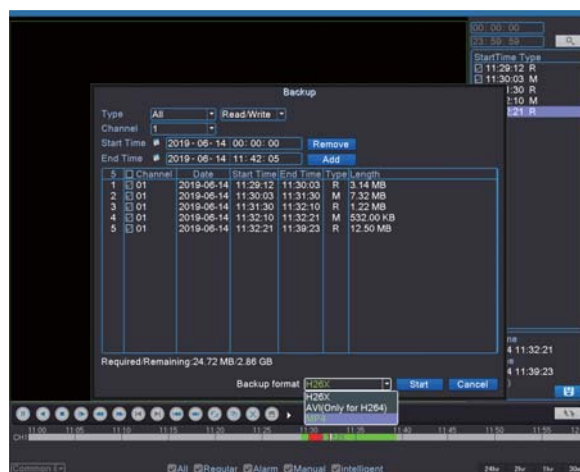
Go to the Main Menu>Playback ,you can choose the way you want to playback on the left bottom.  
Choose intelligent retrieval. select the date and then you can watch the video clips you want to  
playback after double clicks.





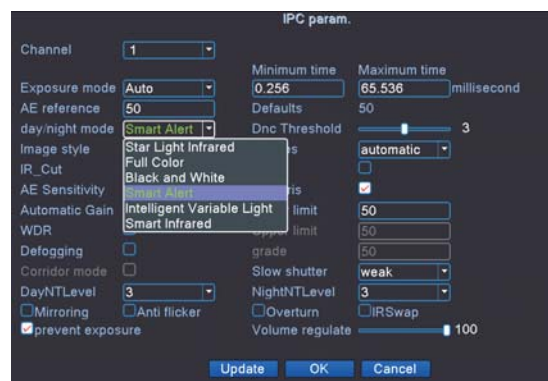
## 07 Video Backup

Go to the Main Menu>System>Backup , you can choose the video clips that you want to backup and choose the backup format to be MP4 , then click “Start” to backup the video.



## 08 Unique Features

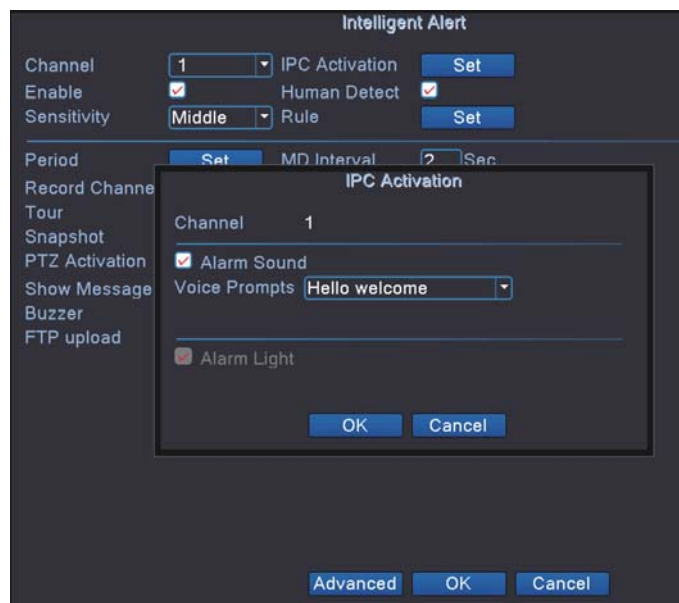
### 1. Flood Light Setting



All the AI cameras in the system are with flood light, right click on the video images , you can got to the "IPC Parameter" settings, in the IPC Parameter you can choose different light modes to turn on/off the flood light. As default, the day /night mode is "Smart Alert". When human detected or motion detected in the night, the flood alert light will be on. If you want to turn off the flood light in the night after human detected or motion detected, you can change the day/night mode to be "Smart Infrared".

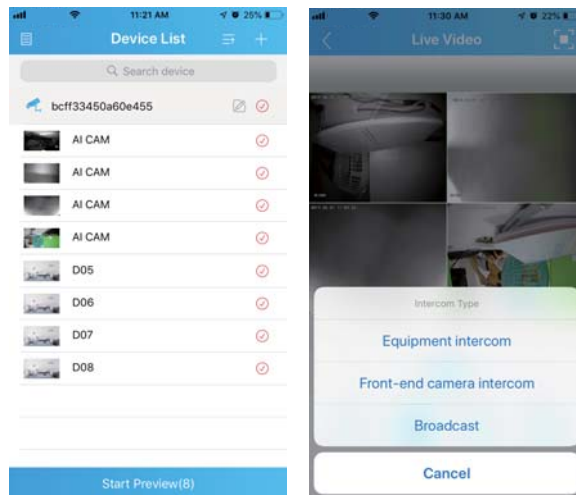
## 2. Voice Alert Setting

As default, the voice alert function is closed ,if you want to turn it on, please follow steps below. On the main menu, choose "Alarm Setup" >>"Intelligent alert">>Choose the channel you want to setup the voice alert>> IPC Activation , Click "Set">>Tick Alarm Sound" and choose the voice prompts you want to play when human detect or motion detect alarm.



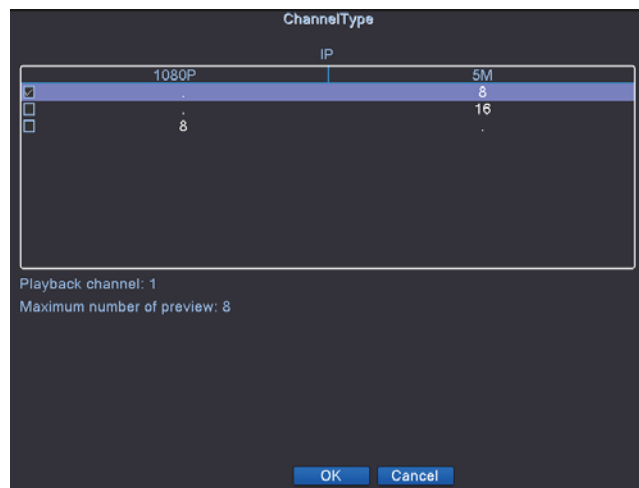
## 3. Broadcast

This system can work as a little broadcast system. On the App, you can select all the cameras in the DVR system and then click "Start Preview". Click " " and choose "Broadcast". Then hold to speak. Then all the cameras with speakers in the system can broadcast your voice messages.



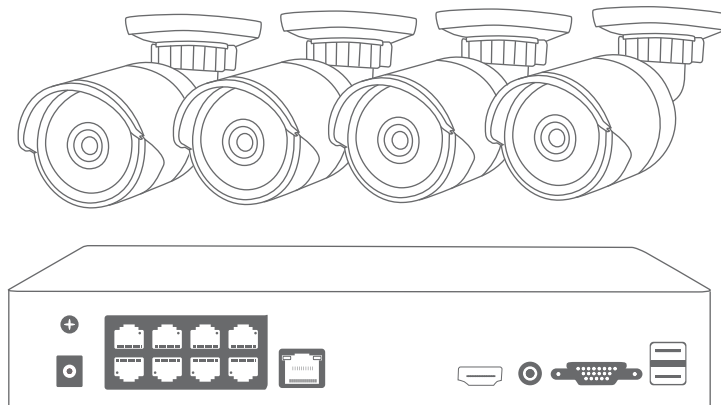
#### 4. Expand Your NVR's Channels.

Our latest Techage PoE NVR system can be expanded. 4ch ones can be expanded to 8ch and 8ch ones can be expanded to be 16ch. You can do the changes on NVR Main Menu>> System>> Digital >>Channel Type. And expand the channels you want. Well, you need a Techage PoE switch to expand the ports for PoE cameras. For detailed info, please refer to "how to expand your POE NVR channels ?" on <http://techage.com/support.php>.



All rights reserved. No part of this publication may be reproduced by any means without written permission from Techage. The information in this publication is believed to be accurate in all respects.

Techage cannot assume responsibility for any consequences resulting from the use thereof. The information contained herein is subject to change without notice. Revisions or new editions to this publication may be issued to incorporate such changes.



[www.techage.com](http://www.techage.com)  
[support@techage.com](mailto:support@techage.com)

