



Quick Setup Guide for SGBRIDGE:

Discovering and Configuring
SGBRIDGE for Cloud

Contents

Discovering and Logging into SGBRIDGE 3

Adding sites to SGBRIDGE..... 5

Configuring Channels for Cloud use.....12

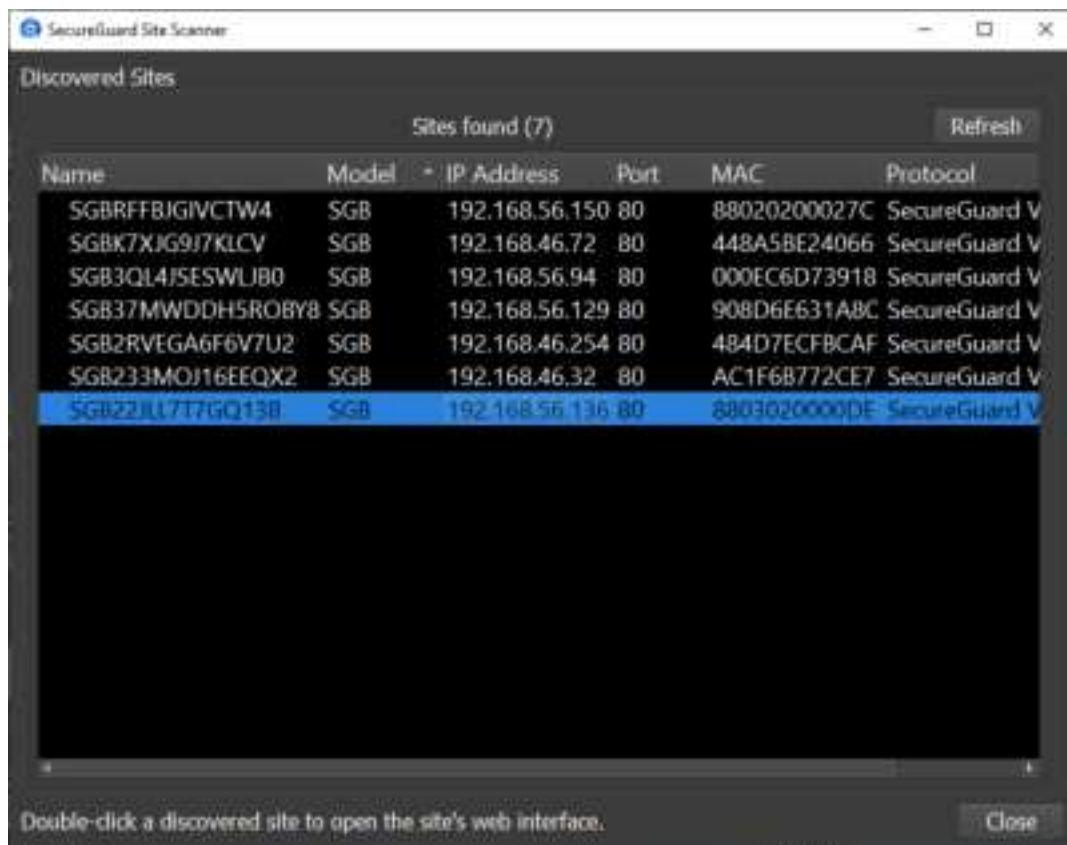
Information for Adding SGBRIDGE to Cloud13

Discovering and Logging into SGBRIDGE

- Connect both power and a network connection with internet access to your SGBRIDGE*.

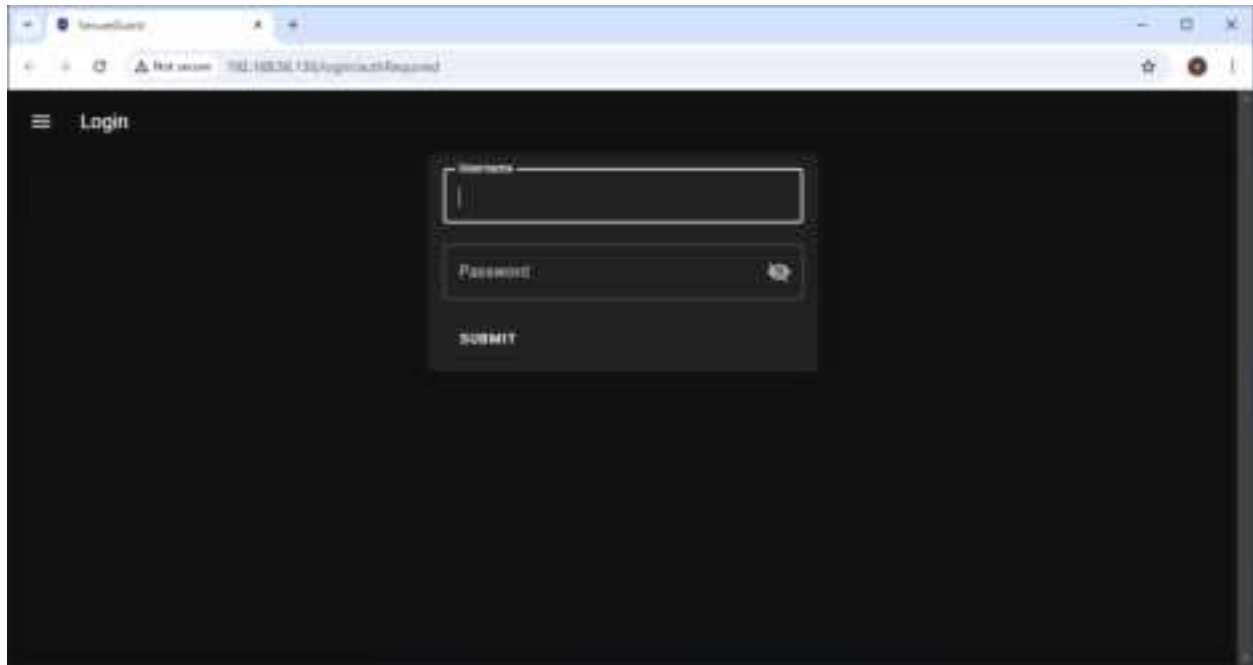
***The SGBRIDGE's network ports are configured to DHCP by default. If a static address is needed, you will need to connect a keyboard, mouse, and monitor to the bridge hardware.**

- While the SGBRIDGE is booting, connect your laptop to the same network the SGBRIDGE is on.
- Download, install, and open the Speco Scanner application. This application will search for your SGBRIDGE. Double-click to access web setup.



- Your default web browser will open a login screen. The default login credentials are:
 - **Username:** admin
 - **Password:** admin

Click 'Submit' to proceed.

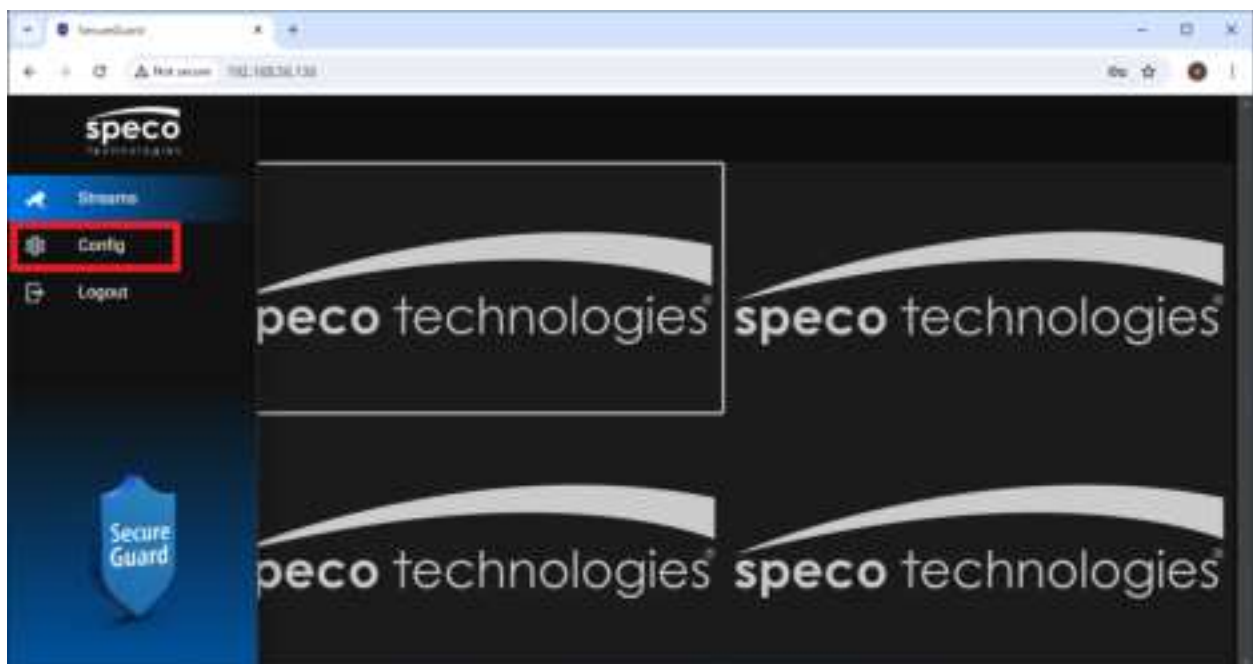


Adding sites to SGBRIDGE

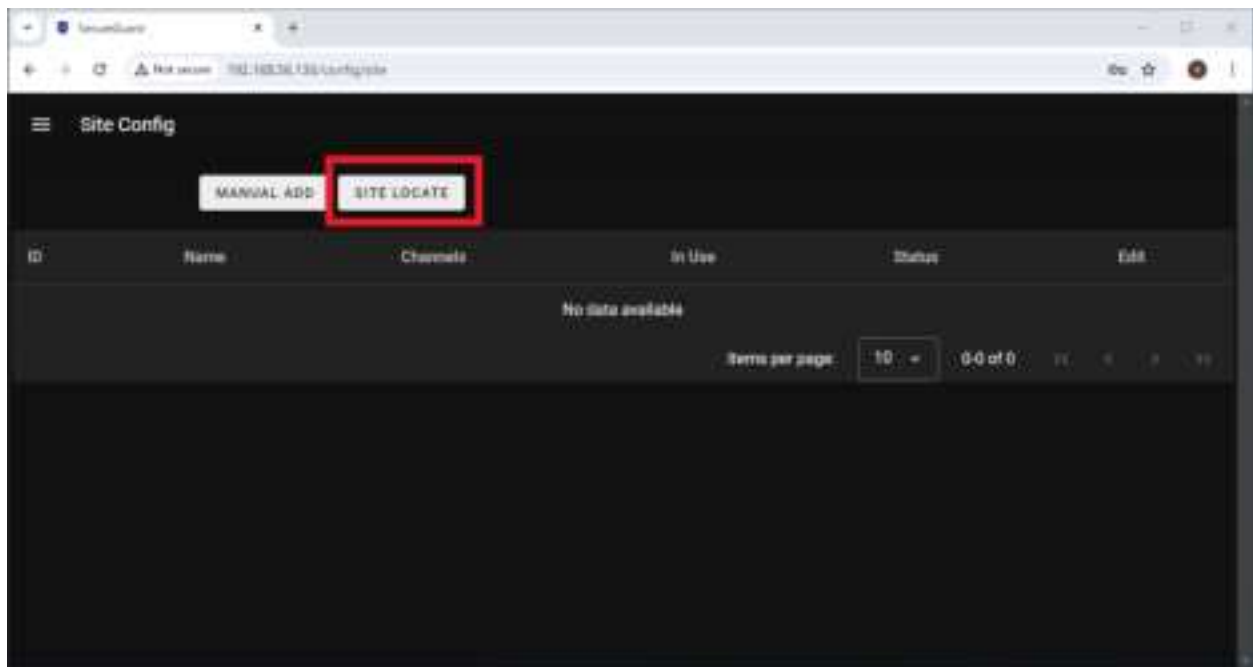
- After logging in, click the hamburger menu on the upper left corner of the interface.



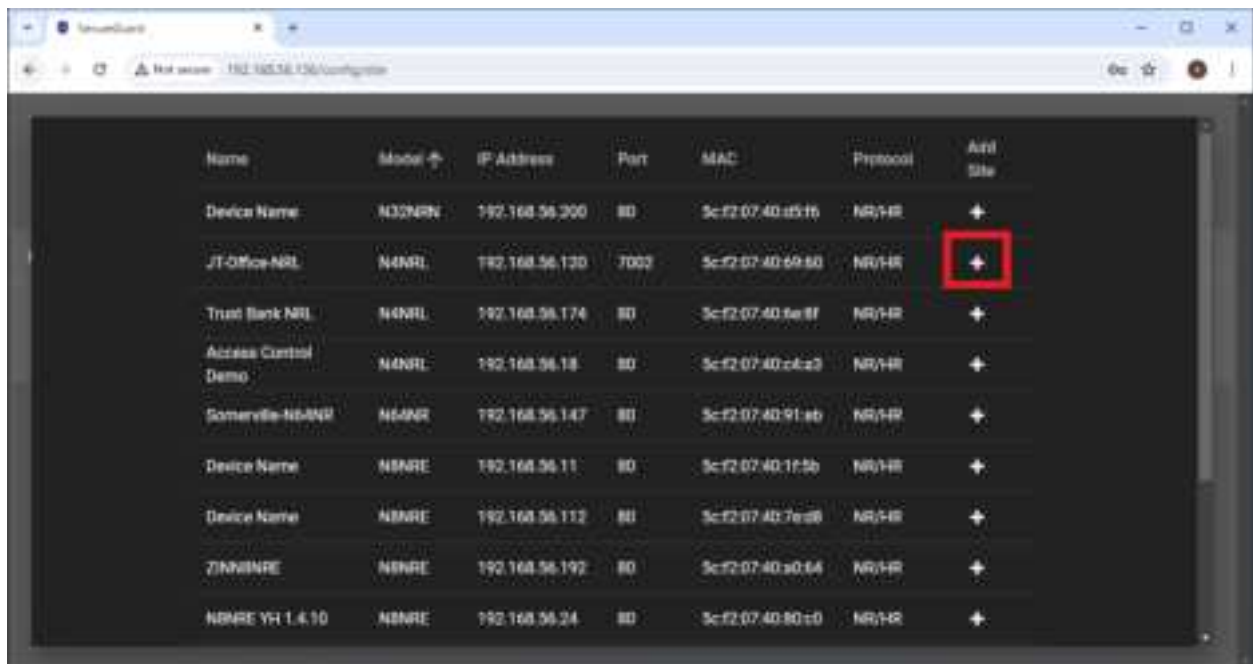
- Click 'Config'.



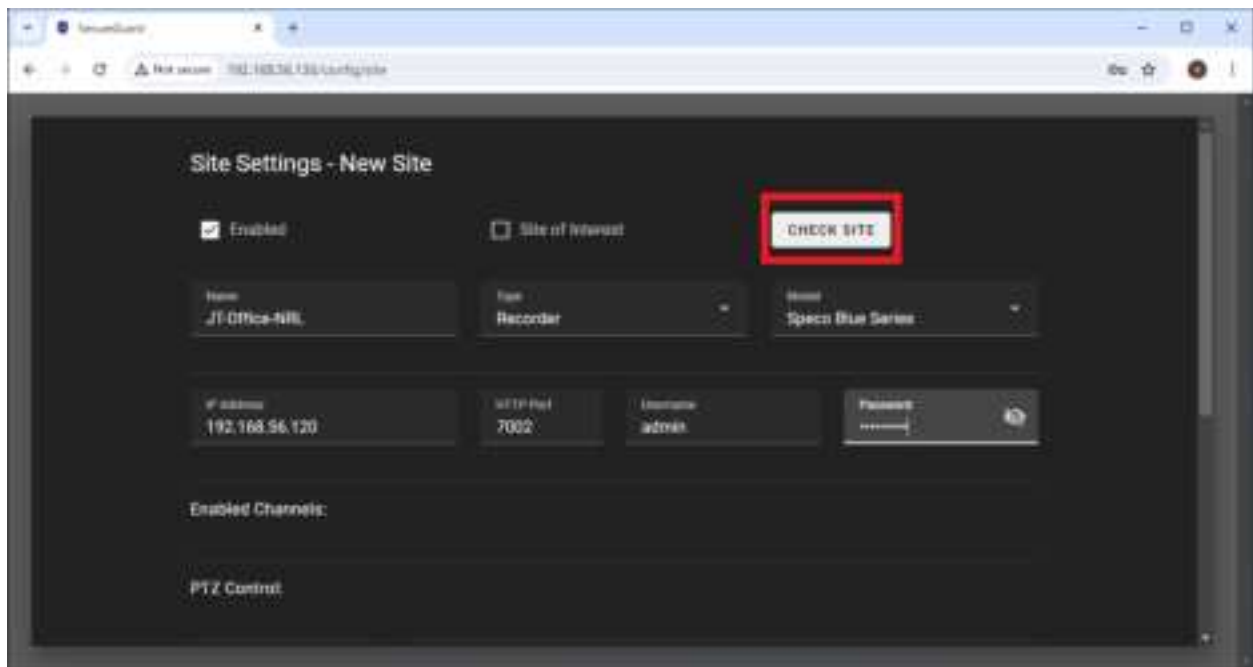
- Click 'Site Locate'



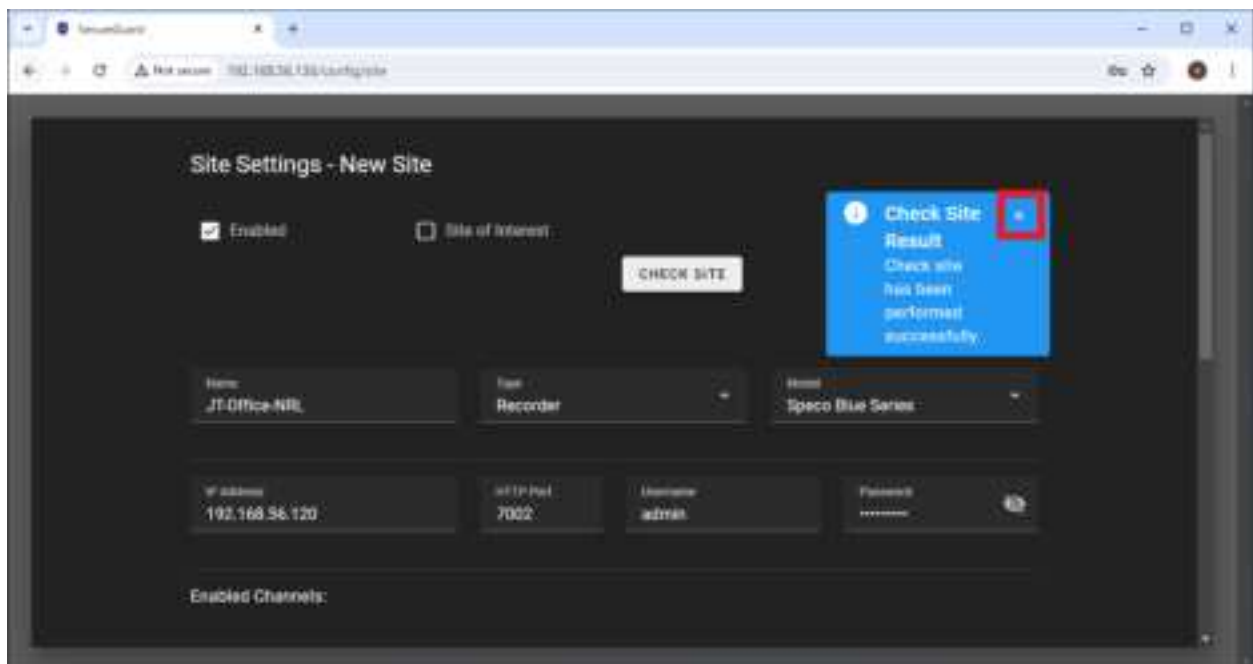
- Find the device(s) you'd like to add to your SGBRIDGE and click the '+' in their row.



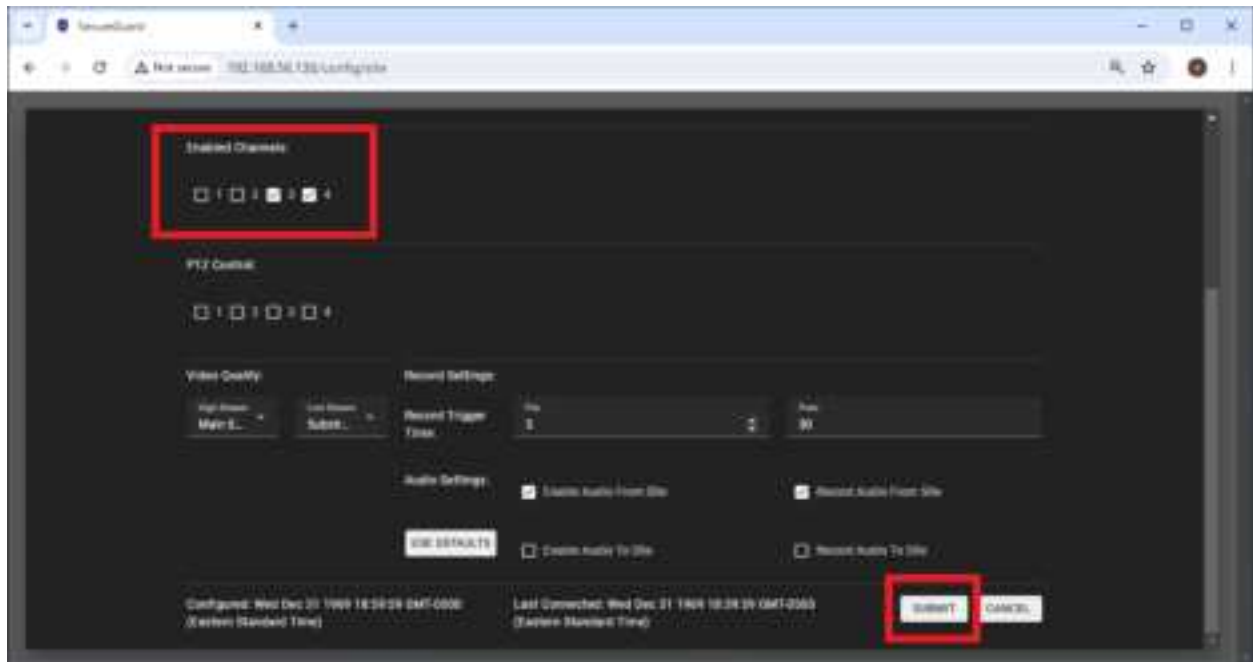
- Enter the correct credentials of the device and click 'Check Site'



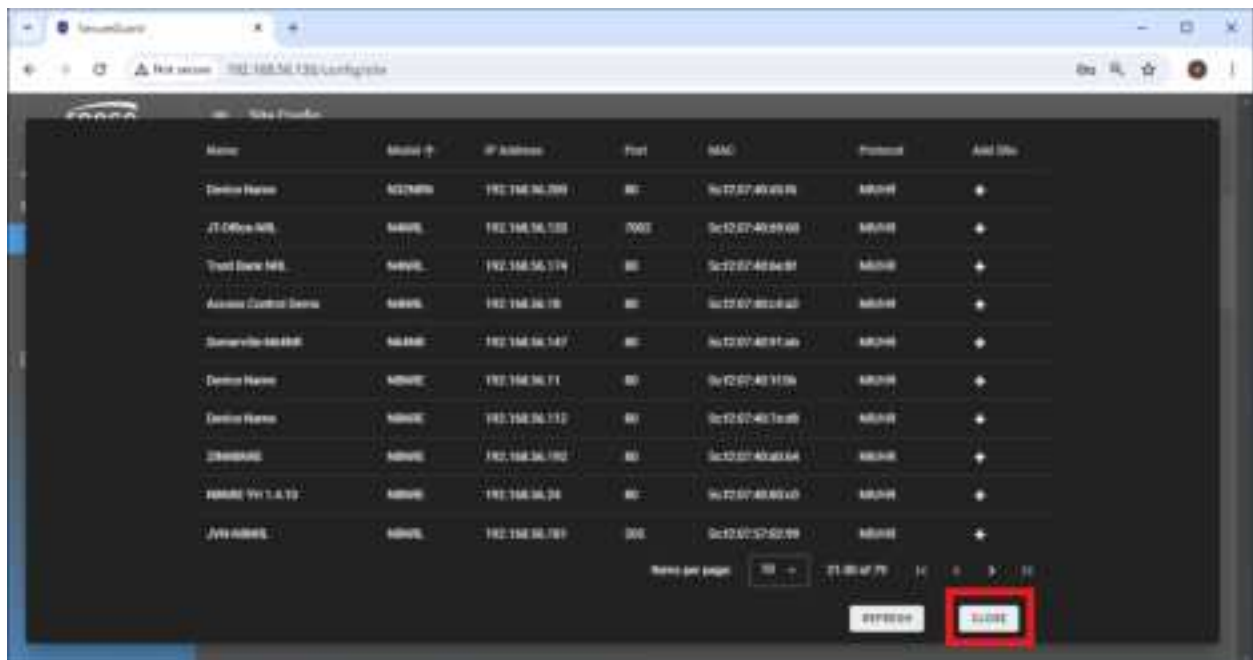
- If successful, a blue message will display stating the 'Check Site' was successful and channels have been received. Click the 'x' icon of the blue message.



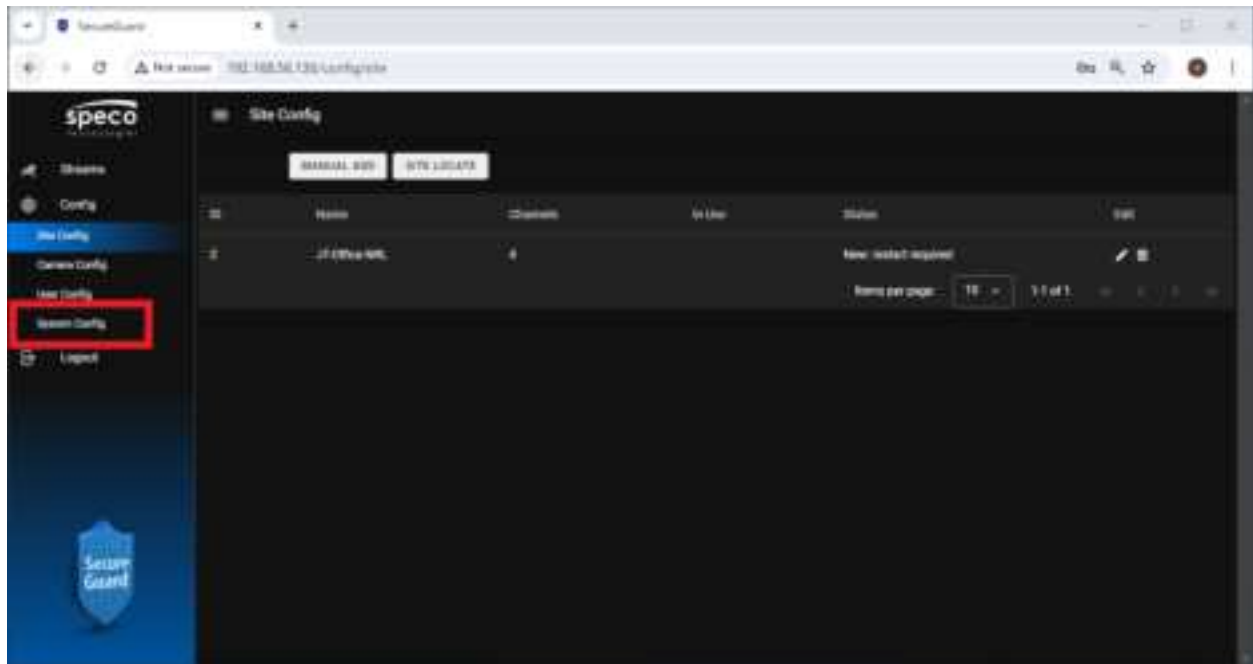
- For recorders, select the channels that you want to go to the cloud. Then click 'Submit'



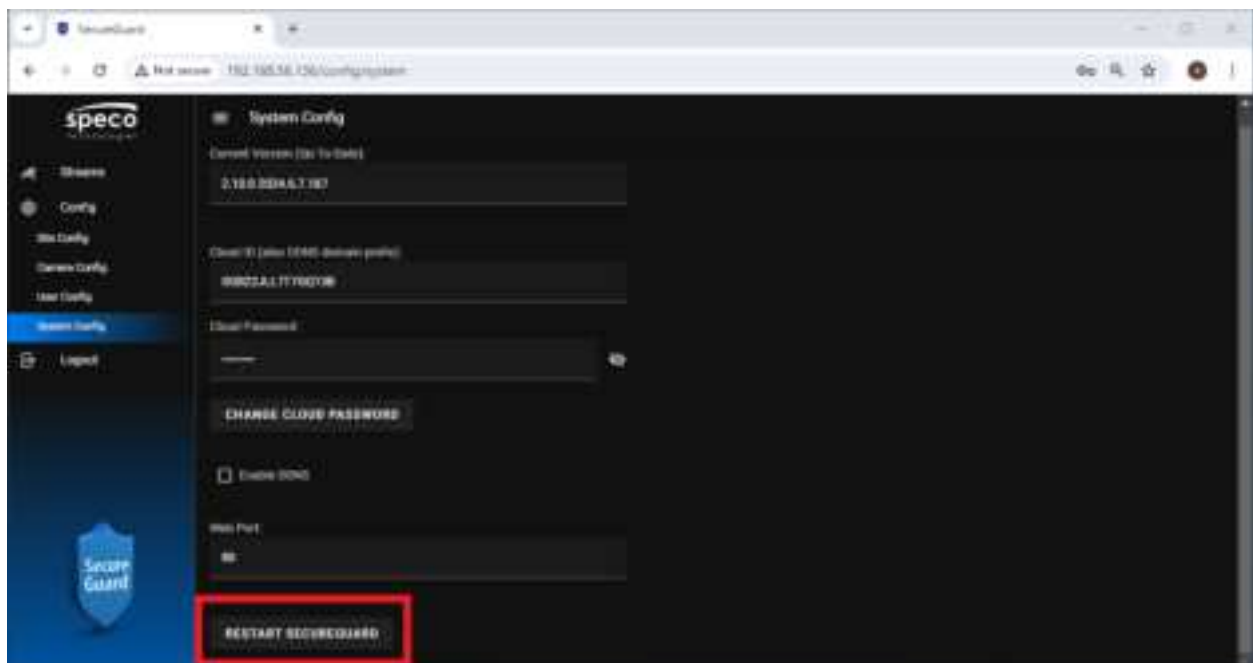
- Click 'Close' in the Site Locate interface.



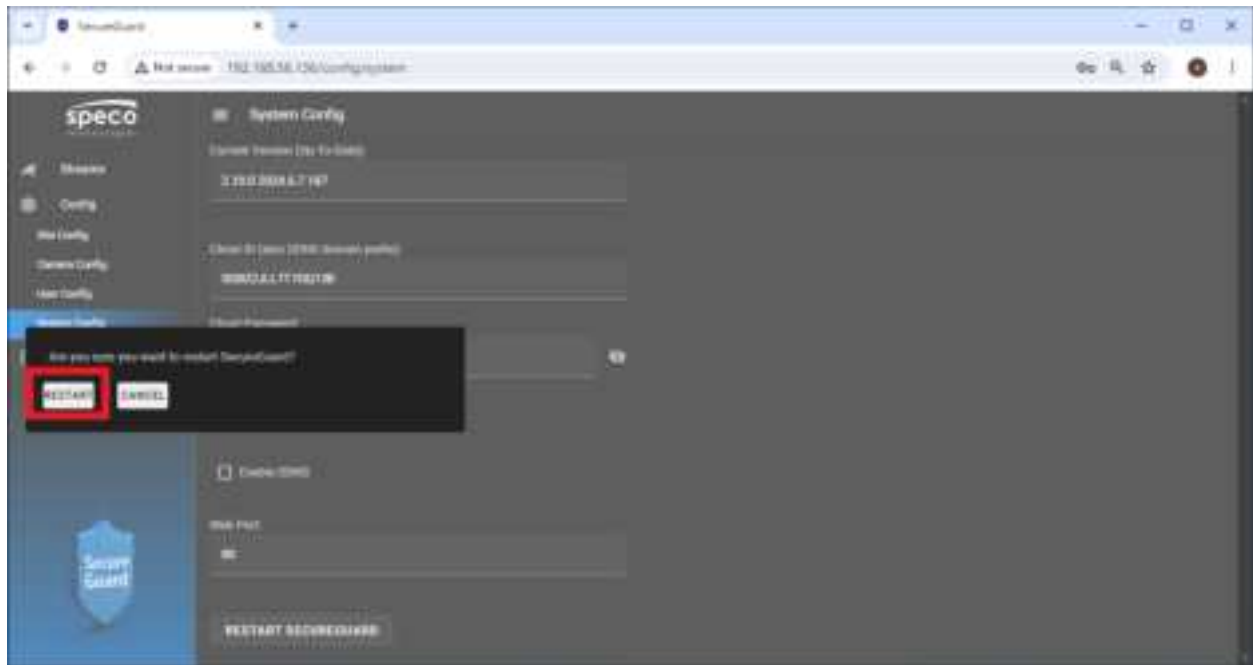
- You will then need to perform a restart for the device(s) to be added. Click 'System Config'.



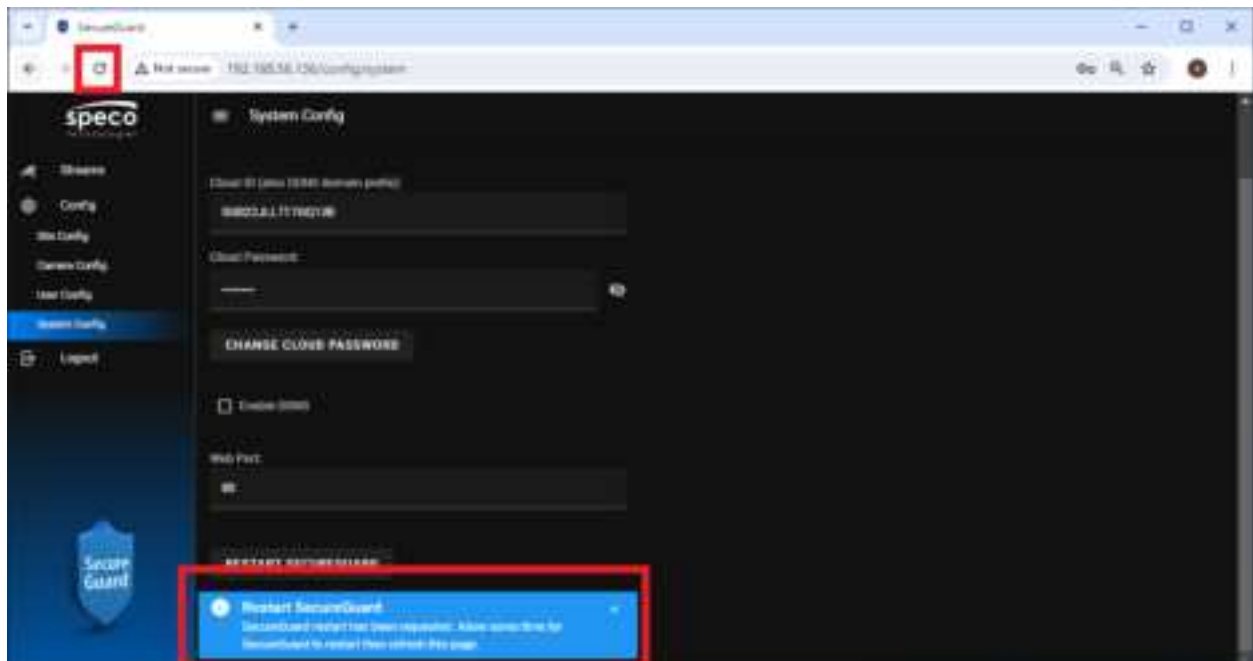
- Click 'Restart SecureGuard'



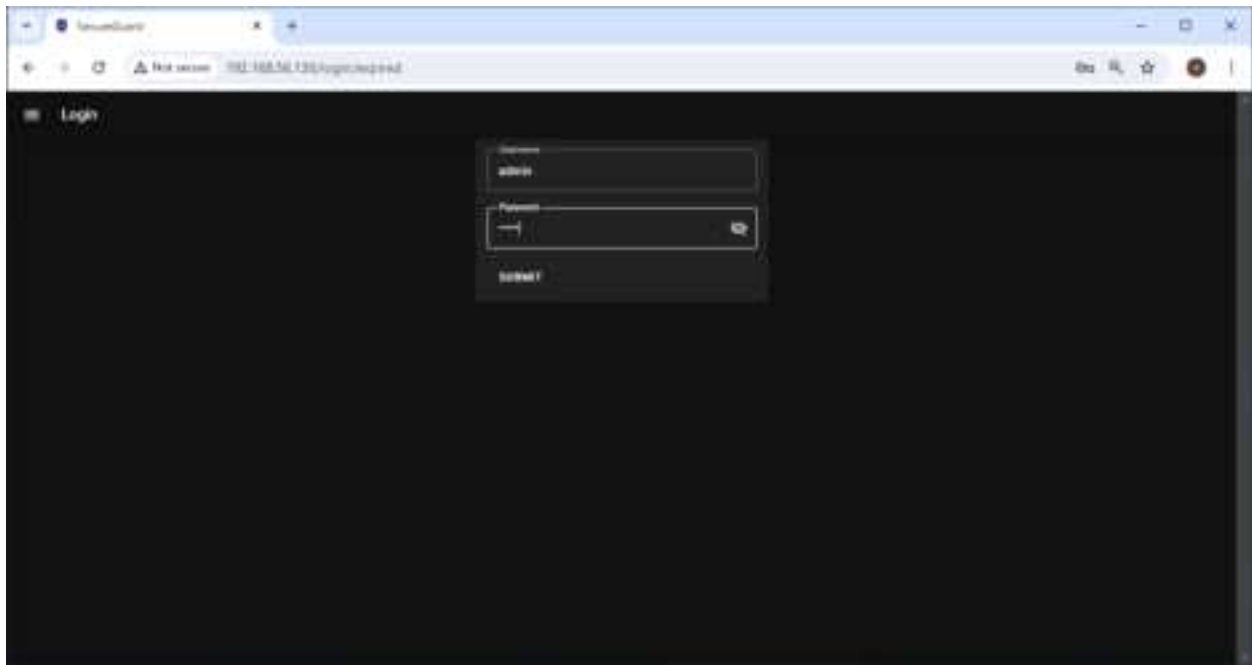
- Click 'Restart'.



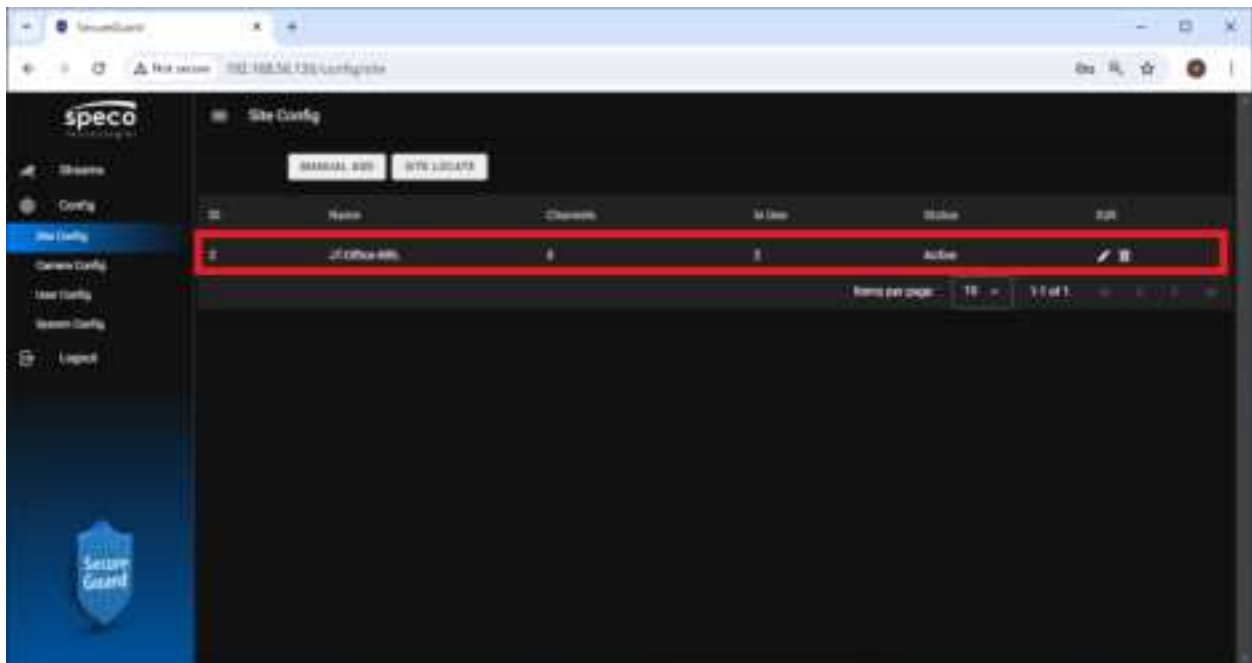
- You will be notified that SecureGuard will be restarted and that you'll need to refresh the web browser page. When you refresh, you'll have to log in again.



- Log into the web interface again.

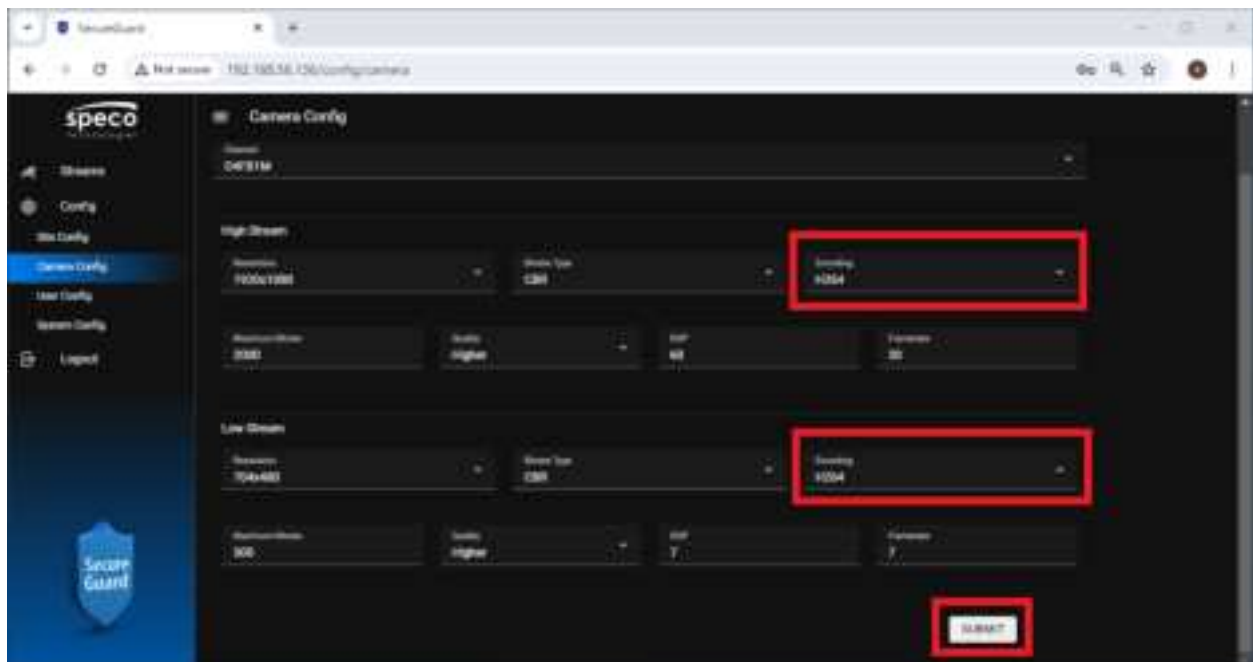


- Navigate to the Site Config interface and you'll see your recorder information.



Configuring Channels for Cloud use

- In the web setup, go to 'Camera Config'. It will take a few seconds for the parameters to come through. Once displayed, **ensure that both main and sub stream 'Encoding' settings are H.264. Configure Resolution, Frame Rate, and Bit-Rate accordingly.**
- Once completed entering parameters, click 'Submit'.



Information for Adding SGBRIDGE to Cloud

- Once you've completed your camera configuration, click 'System Config' and note the **Cloud ID** and **Cloud Password**. You can see the Cloud Password by clicking the eye ball icon.
- You can open another tab for the Cloud Portal setup so that you can copy and paste the Cloud information.
- Please view the **Partner Portal Quick Setup Guide** to learn how to add and setup a SGBRIDGE for a customer.

