

USB Storage Setup Guide

NF18MESH



Doc No. FA01257


Copyright

Copyright© 2021 Casa Systems, Inc. All rights reserved.

The information contained herein is proprietary to Casa Systems, Inc. No part of this document may be translated, transcribed, reproduced, in any form, or by any means without prior written consent of Casa Systems, Inc.

Trademarks and registered trademarks are the property of Casa Systems, Inc or their respective subsidiaries. Specifications are subject to change without notice. Images shown may vary slightly from the actual product.

Previous versions of this document may have been issued by NetComm Wireless Limited. NetComm Wireless Limited was acquired by Casa Systems Inc on 1 July 2019.

 **Note** – This document is subject to change without notice.

Document history

This document relates to the following product:

Casa Systems NF18MESH

Ver.	Document description	Date
v1.0	First document release	23 June 2020
v1.1	Added option to enable SAMBA	1 April 2021
v1.2	Added note about SAMBA version support	6 April 2021

Table i. – Document revision history

Storage Service

The Storage Service options enable you to manage attached USB Storage devices and create accounts to access the data stored on the attached USB device.

Storage Device Info

The storage device info page displays information about the attached USB Storage device.

Log in to the web interface

- 1 Open a web browser (such as Internet Explorer, Google Chrome or Firefox), type following address into the address bar and press enter.

<http://cloudmesh.net> or <http://192.168.20.1>

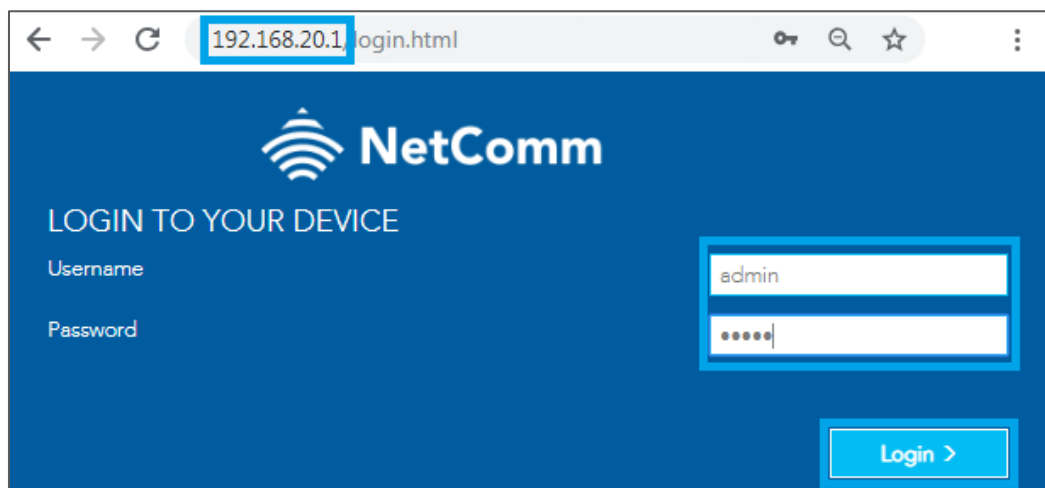
Enter the following credentials:

Username: admin

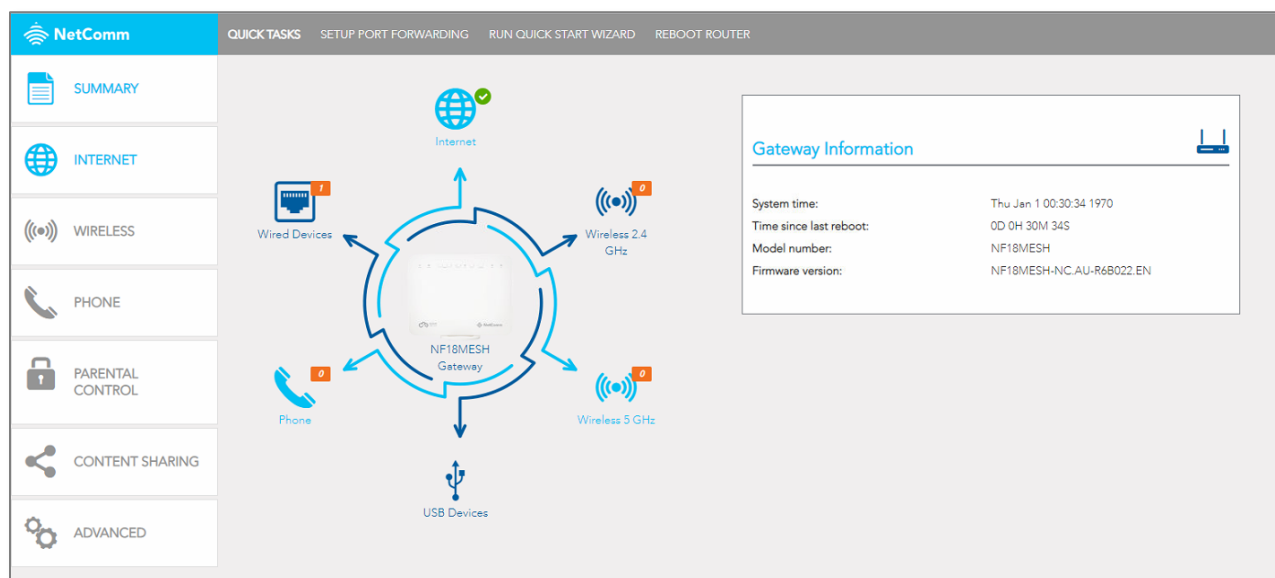
Password: <The password printed on the back of the modem>

then click the **Login** button.

NOTE – Some Internet Service Providers use custom password. If login fails, contact your Internet Service Provider. Use your own password if it is changed.

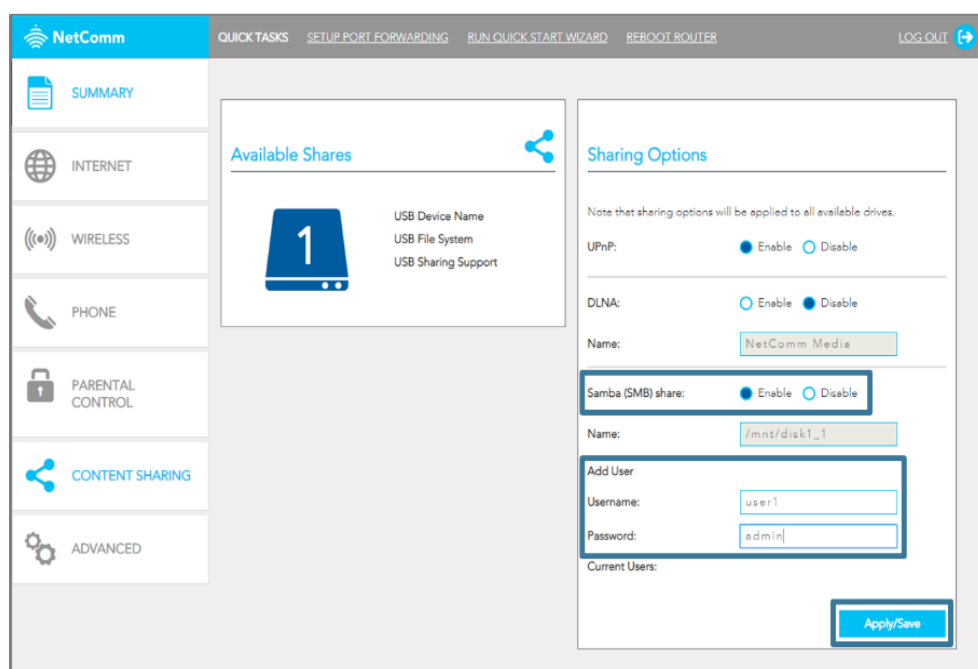


- 2 Click on the **Content Sharing** menu at the left of the page.



- 3  Enable **Samba (SMB) Share** and provide user account details.

Click the **Apply/Save** button to create a user account.



- 4 Adding an account allows the creation of specific user accounts with a password to further control access permissions.

The screenshot shows the NetComm router's web interface. On the left is a sidebar with navigation options: SUMMARY, INTERNET, WIRELESS, PHONE, PARENTAL CONTROL, CONTENT SHARING, and ADVANCED. The main area is titled 'Available Shares' and shows a USB device named '1' with fields for 'USB Device Name', 'USB File System', and 'USB Sharing Support'. To the right is the 'Sharing Options' section, which includes settings for UPnP, DLNA, and Samba (SMB) share. The Samba share is enabled, and a user named 'user1' is listed under 'Current Users'. An 'Apply/Save' button is at the bottom right.

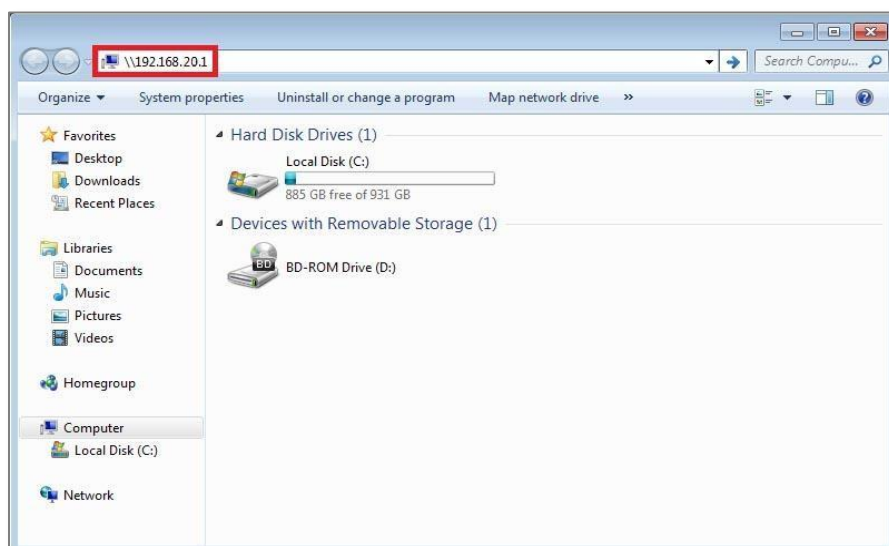
- 5 Navigate to ADVANCED-> Access Control-> SAMBA(LAN). Ensure that the SAMBA Service is Enabled and click Apply/Save. Note that the NF18MESH only supports SAMBA version 1.

The screenshot shows the 'Access Control' page in the NetComm router interface. It features a 'Security' sidebar with options like IP Filtering, MAC Filtering, IPsec, and Access Control. The main area is titled 'Access Control' and contains a table for 'Services access control list (SCL) enable or disable the running services.' The table has columns for Services, LAN, LAN Port, WAN, and Port. The SAMBA service is highlighted with a red box, showing it is enabled on the LAN with port 445. An 'Apply/Save' button is at the bottom.

Services	LAN	LAN Port	WAN	Port
HTTP	<input checked="" type="checkbox"/> Enable	80	<input type="checkbox"/> Enable	80
HTTPS	<input checked="" type="checkbox"/> Enable	443	<input type="checkbox"/> Enable	443
TELNET	<input checked="" type="checkbox"/> Enable	23	<input type="checkbox"/> Enable	23
SSH	<input type="checkbox"/> Enable	22	<input type="checkbox"/> Enable	22
FTP	<input checked="" type="checkbox"/> Enable	21	<input type="checkbox"/> Enable	21
TFTP	<input type="checkbox"/> Enable	69	<input type="checkbox"/> Enable	69
ICMP	<input type="checkbox"/> Enable	0	<input type="checkbox"/> Enable	0
SNMP	<input type="checkbox"/> Enable	161	<input type="checkbox"/> Enable	161
SAMBA	<input checked="" type="checkbox"/> Enable	445	<input type="checkbox"/> Enable	445

Accessing USB hard drive Connected to NF18MESH using a Windows PC

- 1 Exit out from the NetComm router's WEB Interface page and open up the "Windows Explorer" and type \\192.168.20.1 on the top address bar.



Note – Windows Explorer is different from the Internet Explorer. You can open a Windows Explorer by opening Computer or Documents.

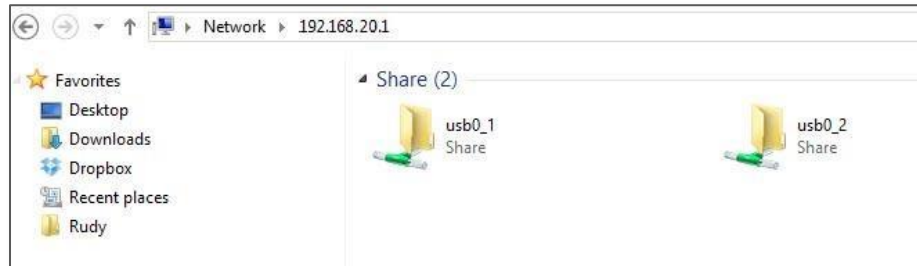


Important – Turn off firewall/ antivirus firewall if it has no connection to USB storage through Wireless.

- 2 When prompted for login details, type the Storage User Account **Username** and **Password**. The example below uses "user1" as the username.

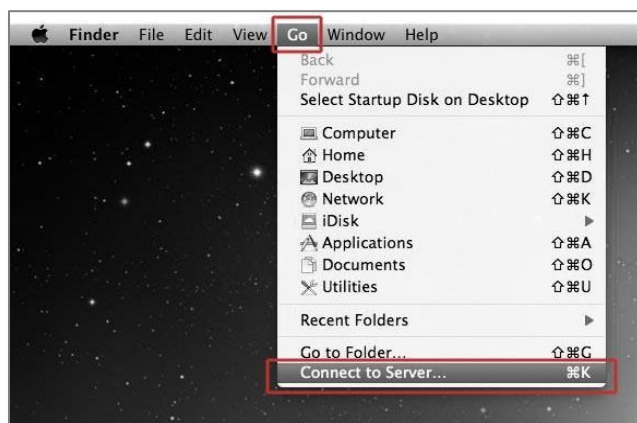


- 3 Once you have **logged in**, you will be able to **view and edit** the contents of the USB storage device.

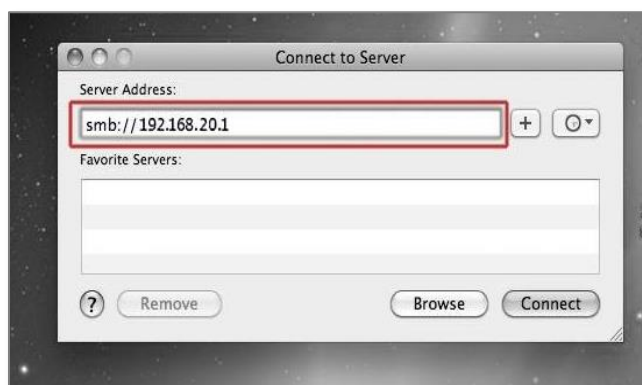


Accessing USB hard drive Connected to NF18MESH using a Mac PC

- 1 On your Mac click on **Go > Connect to a Server**.



- 1 Enter the path to the network drive you want to map, i.e.: **smb://192.168.20.1** then click **Connect**.



- 2 Enter your Storage User Account **Username** and **Password** as shown below and click the **Connect** button to mount the network drive.



- 3 The drive will now appear on your **finder window sidebar**.

