



## **Kogan SmarterHome™ Automatic Self-Cleaning Smart Cat Litter Box**

KASMCATLITA

Safety & Warnings	3
Components	4
Overview	5
Assembly	8
Before First Use	9
Connect to SmarterHome™ App	11
Google Home	14
Amazon Alexa	17
Operation	21
Cleaning and Care	29
Troubleshooting	31
Specifications	33
Notes	35

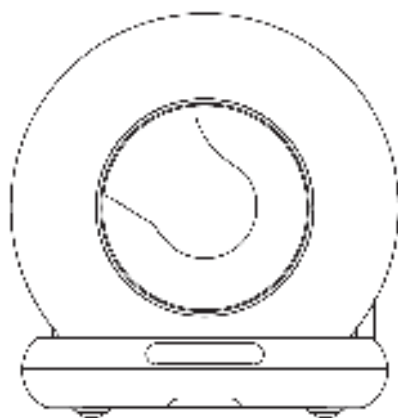
# Safety & Warnings

Read all safety notes and instructions before first use even if you are familiar with this product. Retain this user guide for future reference.

## Safety Precautions:

- Install and operate the product strictly according to the instructions.
- For indoor use only. Keep away from direct sunlight and heat sources.
- Place the unit on a firm, flat surface. Do not place any items on top.
- Do not drag or drop the product to avoid damage.
- Do not use auto-cleaning mode for kittens under 1kg or lactating cats.
- Never immerse or soak the main unit.
- Disconnect the unit from power before moving, cleaning, or long-term storage.
- Always use the original power adapter provided with the product.
- Children must use the product only under adult supervision.
- Repairs should only be carried out by qualified personnel. Contact **help.Kogan.com** for further support.
- For any operational issues, contact **help.Kogan.com** for further support.
- If the product is not functioning as expected disconnect and reconnect the power. If problem persists, contact **help.Kogan.com** for further support.

# Components



Smart Litter Box



Power Adaptor



Garbage Bag



Deodoriser

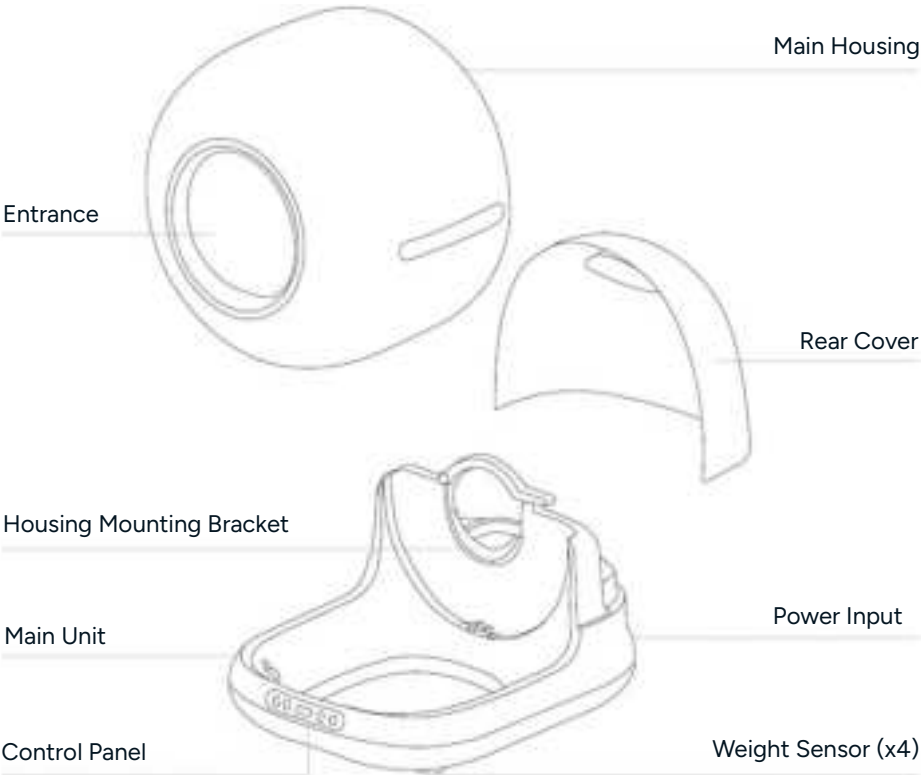


Sand Control Mat



User Guide





# Overview









## Control Panel



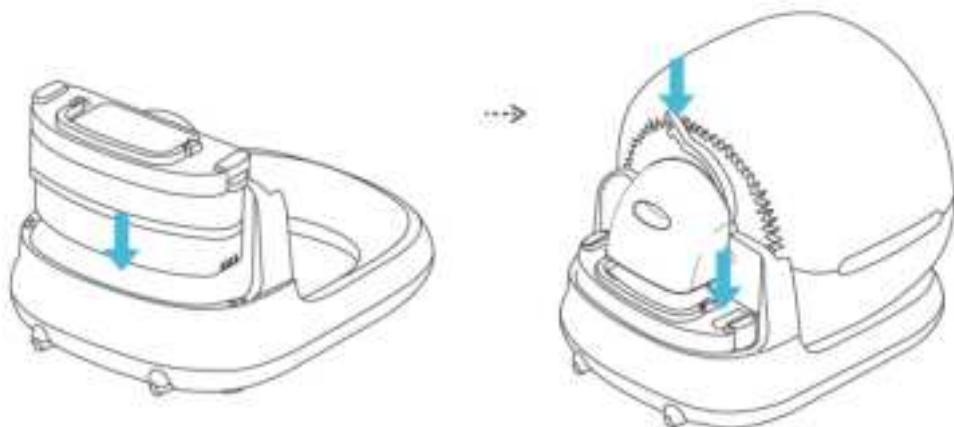
Button	Icon	Method	Description
Wi-Fi Button		Press and hold for 5 seconds.	Place the unit in pairing mode.
Smooth Sand Button		Press once.	Press to turn 'Sand Smoothing' mode On/Off.
		Press and hold for 5 seconds.	Resets cat weight
Clean Button		Press once.	Press to turn 'Cleaning' mode On/Off.
		Press and hold for 5 seconds.	Calibrate the litter box. Ensure all litter has been removed before calibrating.
Pour Sand Button		Press once.	Press to turn 'Sand Pouring' mode On/Off.
		Press and hold for 5 seconds.	Turns child lock On/Off.

# Indicators

Icons	Colour	Indicator status	Description
	Blue	Flashing	Pairing mode. Ready to connect to SmarterHome™ App.
	Red	Flashing	The waste bin is full or foreign objects are detected in the waste bin.
		Always on	Main House and Rear Cover not in place.
	Green	Flashing	Motor overcurrent. Contact <b>help.Kogan.com</b> for support.
	Green	Always on	Sand Smoothing in progress. Will turn off once completed.
	Red	Always on	Abnormality is detected. Operation has been suspended. Inspect little box for any foreign material or blockage.
	Green	Always on	Cleaning in progress. Will turn off once completed.
	Red	Always on	Abnormality is detected. Operation has been suspended. Inspect little box for any foreign material or blockage.
	Green	Always on	Sand Pouring in progress. Will turn off once completed.
	Red	Always on	Abnormality is detected. Operation has been suspended. Inspect little box for any foreign material or blockage.

# Assembly

1. Place the Waste Bin, followed by the Waste Bin Cover into the rear section of the Main Unit.
2. Place the Main Housing onto the Main Unit.
3. Secure the Main Housing in place but closing the Main Housing Lock.



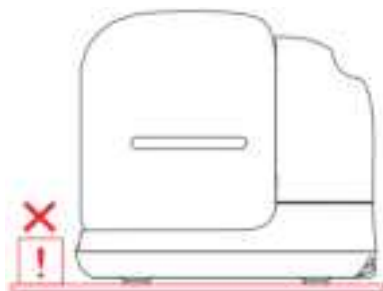
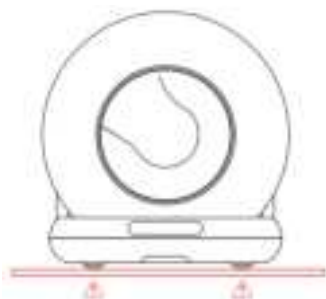
4. Attach the Rear Cover.





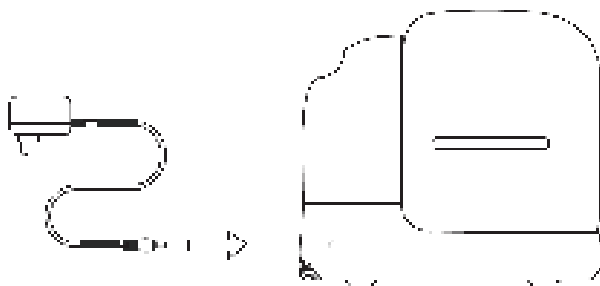
# Before First Use

1. Ensure all packaging and protective films have been removed.
2. Place the assembled unit on a firm and level surface on the floor. Do not place any object in front of the unit as this will trigger the motion sensor.
3. Ensure the Main House, Waste Bin and Rear Cover have all been properly installed.



## Powering the Device

1. Connect the supplied power adaptor to the power Input port on the rear of the unit. Plug the Power Adaptor into an electrical outlet.
2. The unit will power on and begin self-checking. If self-checking is successful, there will no indicators illuminated on the control panel.

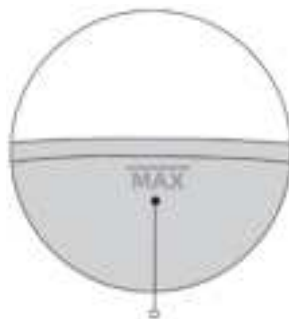


### Note:

Picking up or dragging this product after self-checking, will interfere with the weight calibration. Press and hold the 'Clean' button for 5 seconds to recalibrate before operation.

## Adding Litter to the Litter Box

1. Add litter to the Main Housing ensuring the litter does not exceed the "Max" line.
2. After adding litter, the 'Smooth' button indicator will illuminate blue for approximately 10 seconds.
3. Press and hold the 'Smooth' button for 5 seconds to calibrate. If there is no user input for 5 minutes the unit will automatically smooth the litter and calibrate.



## Pairing Mode

1. Press and hold the 'Wi-Fi' button for 5 seconds to place the unit in 'Pairing' mode.
2. The 'Wi-Fi' button indicator will begin flashing blue. The unit is now ready to pair with the SmarterHome™ App.

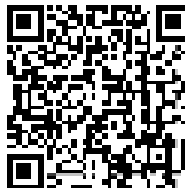
# Connect to the SmarterHome™ App

## Install the App

Download the Kogan SmarterHome™ app from the Apple App Store (iOS) or the Google Play Store (Android).



App Store (iOS)



Play Store (Android)

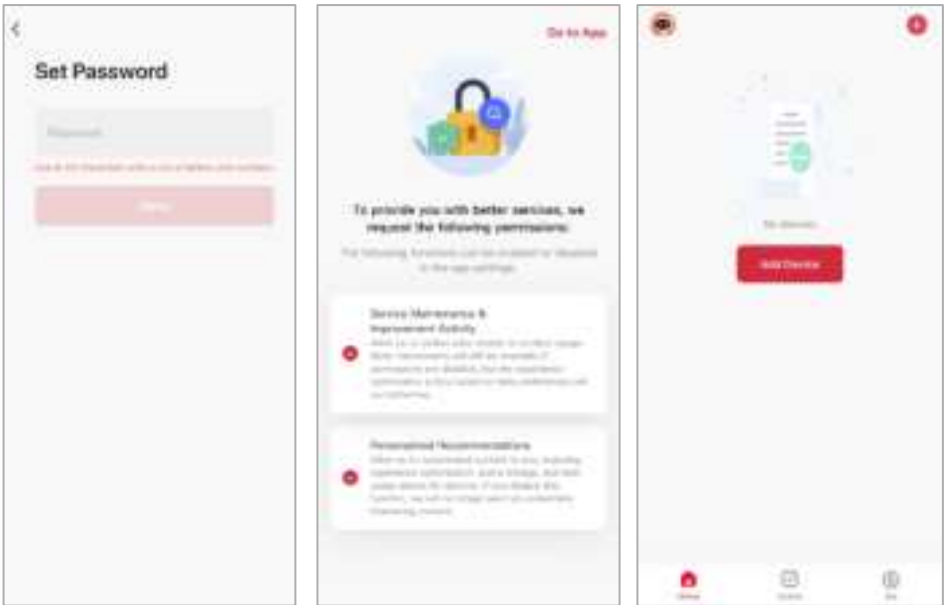


## Log In or Sign Up

1. If you already have a SmarterHome account, tap 'Log In'. To register a new account, tap 'Sign Up'.
2. The app will automatically recognise your country. If needed, you can manually select your country from the drop down menu. Enter your email address, agree to the Privacy Polics and User Agreement, and tap 'Get Verification Code' to continue.
3. A 6-digit code will be sent to the submitted email address. Enter the code before the one-minute timer expires.



- 4. Enter a password that uses 6-20 characters with a mix of letters and numbers and tap 'Done'.
- 5. Enable the permissions and tap 'Go to App'.



## Set the Device in Pairing Mode

When the device is first turned on, it may automatically enter pairing mode (Wi-Fi button indicator will be flashing blue).

If not automatically in pairing mode when powered on, you can manually set the device in pairing mode by pressing and holding the 'Wi-Fi' button until the indicator begins flashing blue.

## Add the Device to the App

1. Open the SmarterHome™ app.
2. Tap the '+' icon in the top right corner of the screen and then tap 'Add Device'.
3. Tap 'Add' when the device appears. Alternatively, select the product type from the list of options in the app (Other > Kogan Smart Litter Pan).
4. Follow the prompts to add your device to the app.

### Notes:

- The device and the app must use the same Wi-Fi network.
- The device is only compatible with 2.4Ghz networks.

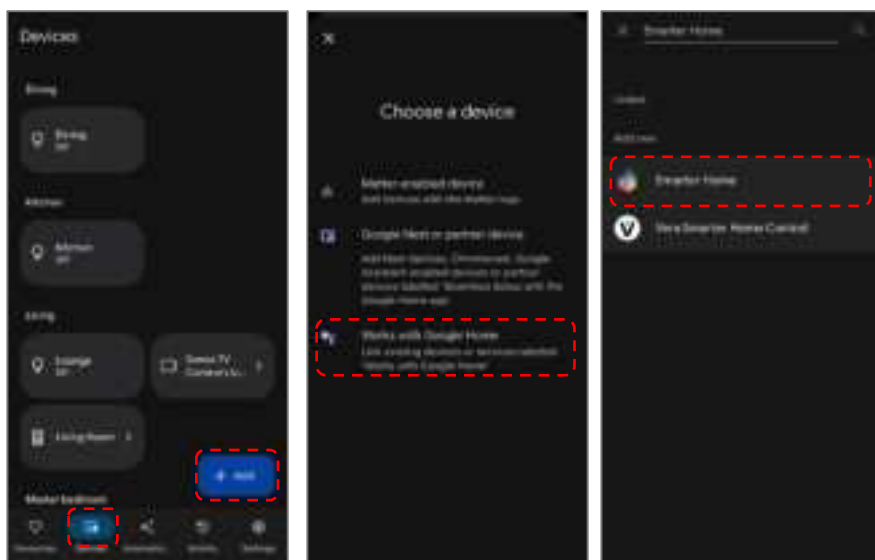
## Connectivity Support

Scan the QR code below or go to <https://help.kogan.com/s/article/Kogan-SmarterHome-App-Connectivity-Support> and follow the pairing instructions for EZ mode.

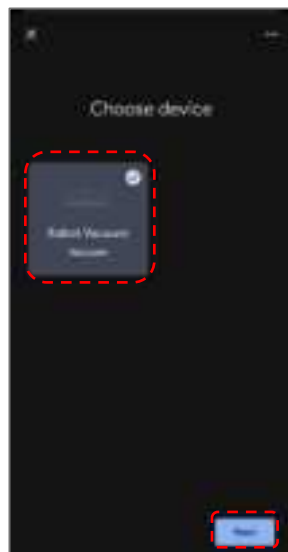


# Google Home

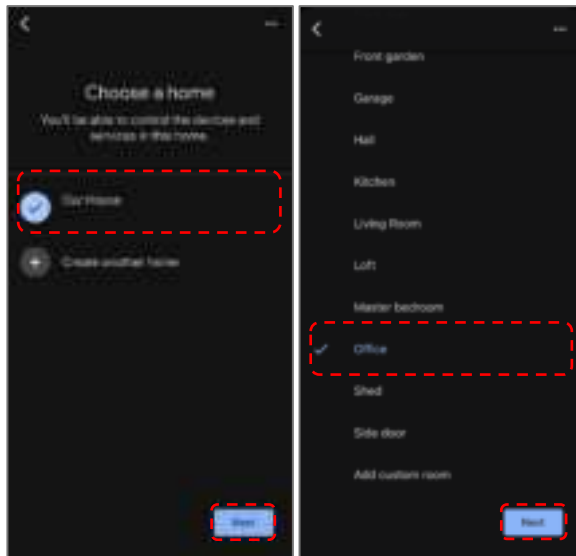
1. Ensure you are logged into the Kogan SmarterHome™ app.
2. Open the Google Home app.
3. Go to the devices tab and tap the '+ Add' button in the lower right corner.
4. Tap 'Works with Google Home'.
5. Search for 'Smarter Home' in the search bar and select 'Smarter Home' from the results.



6. Tap the 'Agree and link' button.
7. Search for 'Smarter Home' in the search bar and select 'Smarter Home' from the results.
8. Once linked, a 'Smarter Home is linked' pop-up will appear at the bottom of the screen.
9. Tap your device and then tap the 'Next' button.



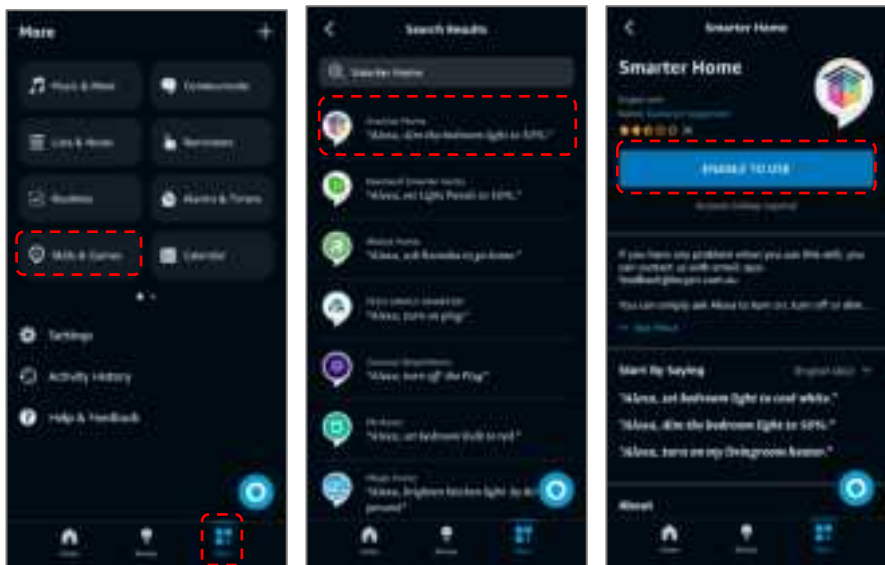
10. Select the home you wish to add the device to and tap the 'Next' button.
11. Select the room your device is in and tap the 'Next' button.





# Amazon Alexa

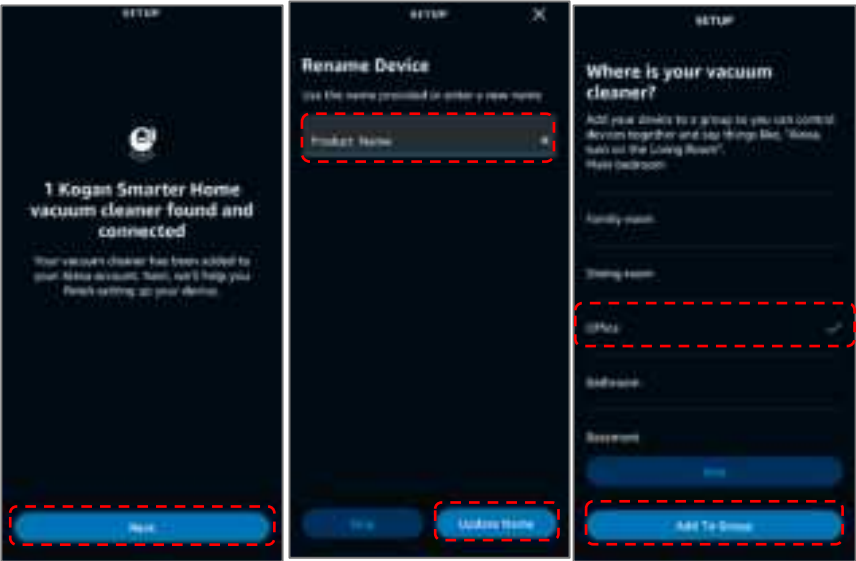
1. Ensure you are logged into the Kogan SmarterHome™ app.
2. Open the Amazon Alexa app.
3. Go to the 'More' tab and tap 'Skills & Games'.
4. Search for 'Smarter Home' in the search bar and select 'Smarter Home' from the results.
5. Tap the 'ENABLE TO USE' button.



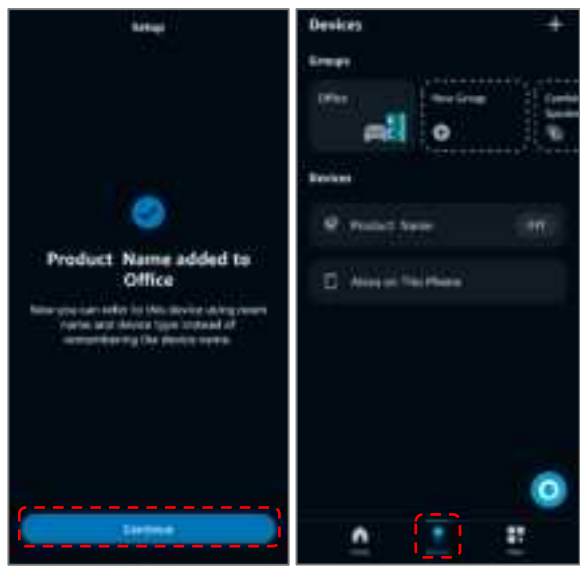
6. Tap the 'Agree and link' button.
7. Once linked, tap 'Next'. Alexa will search for any compatible devices.



- 8. Once your device has been found, tap 'Next'.
- 9. Rename the device to your desired name and tap 'Update Name'.
- 10. Select the room your device is in and tap 'Add To Group'.



- 11. Once the device has been successfully added to your desired room, tap 'Continue'.
- 12. You can view and manage your device from the 'Devices' tab.

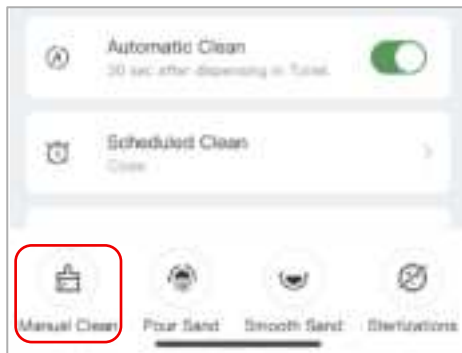


# Operation

## Cleaning

Click the 'Clean' button on the control panel or tap the 'Manual Clean' in the SmarterHome app to initiate cleaning.

- During the cleaning process, other functions cannot be performed. Wait until cleaning is complete before using any other features.
- You can cancel cleaning at any time by short pressing the 'Clean' button again.



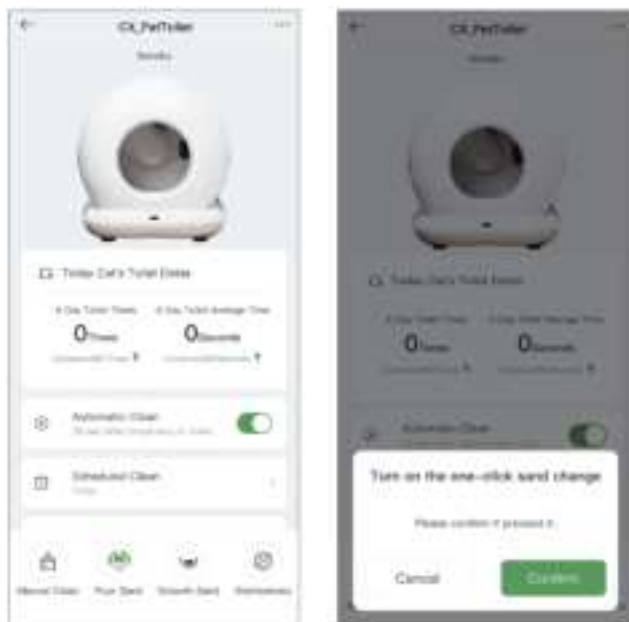
## Replace Litter

When the waste bin is full, the 'Wi-Fi' button indicator will flash red and the SmarterHome app will send you a notification.

1. Check that the garbage bag in not currently full before proceeding.
2. Ensure most of the remaining litter has been used to avoid spillage during 'Sand Pouring'.



3. Press the 'Sand Pour' button in the App or on the control panel and wait for the machine to empty the remaining litter.
4. After the litter has been cleared, replace the garbage bag with a new one.

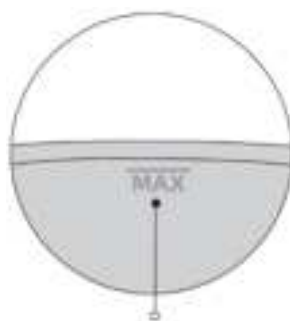
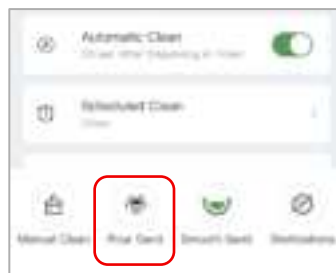


**Note:**

If you forgot to replace the garbage bag before pouring the sand, you can press the 'Pour Sand' button again to cancel the process.

## Adding Litter to the Litter Box

1. Add litter to the Main Housing ensuring the litter does not exceed the “Max” line.
2. After adding litter, the ‘Smooth’ button indicator will illuminate blue for approximately 10 seconds.
3. Press and hold the ‘Smooth’ button for 5 seconds to calibrate. If there is no user input for 5 minutes the unit will automatically smooth the litter and calibrate.



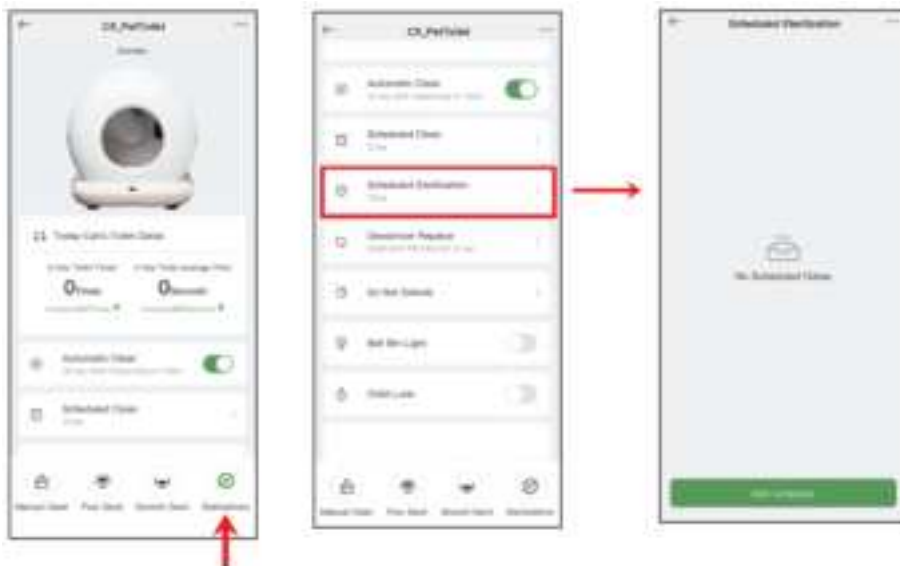
Do not exceed 'MAX' line.

### Notes:

- This device includes a safety function that pauses operation if a cat approaches the entrance or if weight is detected in the litter box.
- After adding litter, ensure the amount does not exceed the 'MAX line' to prevent overflow when pouring.
- You can adjust the litter surface level using the 'Smooth Sand' button on the control panel or in the SmarterHome app.

## Sterilisation

1. Press the 'Sterilisations' button in the app to run a 30-minute sterilisation cycle that stops automatically.
2. You can also schedule sterilisation by setting the desired time and duration in the SmarterHome app.



### Notes:

- The machine will automatically run a 30-minute sterilisation cycle after each cleaning.
- If a cat enters the litter box during sterilisation, the cycle will pause and resume once the cat leaves.



## Automatic clean

Tap the 'Automatic Clean' in the SmarterHome app to enable this function. The device will automatically detect when your cat enters and exits the litter box. It will begin working automatically after powering on and completing its self-check.

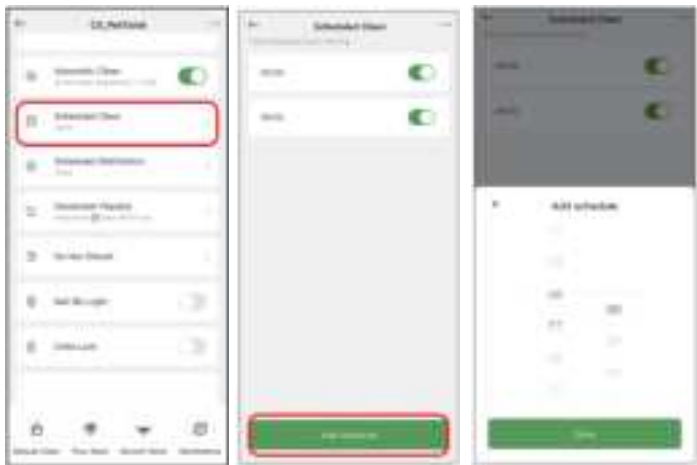


### Notes:

- If your cat weighs less than 1kg or is pregnant, disable the auto-cleaning function in the app and use 'Manual Clean' instead.
- If you use quick-clumping litter, go to the 'Automatic Clean' settings in the app and configure the 'Shovel Poop Delay Time'. This allows the device to wait a preset time, before cleaning to help reduce odour.
- If your cat remains in the litter box for more than 10 seconds, the system recognises this as toilet behaviour and activates cleaning.
- If the app controls are temporarily unresponsive or not synchronised with the panel, check your network connection, reconfigure the device if needed, or try tapping the app controls again.

# Scheduled Cleaning

Set a cleaning schedule based on your preferences to enable daily routine cleaning.

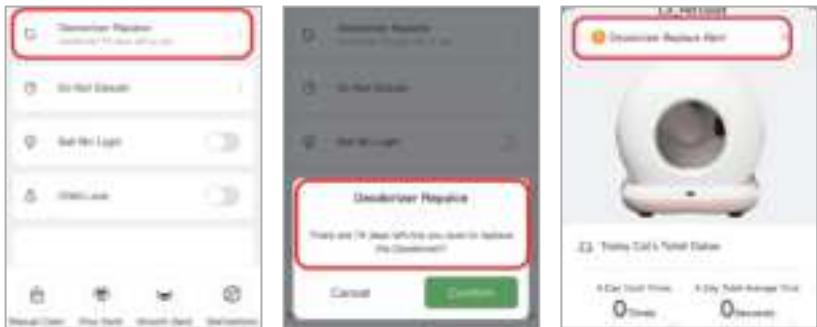


**Note:**

If the scheduled cleaning time overlaps with 'Do Not Disturb' mode, the device will perform cleaning without sterilisation and then return to 'Do Not Disturb' mode.

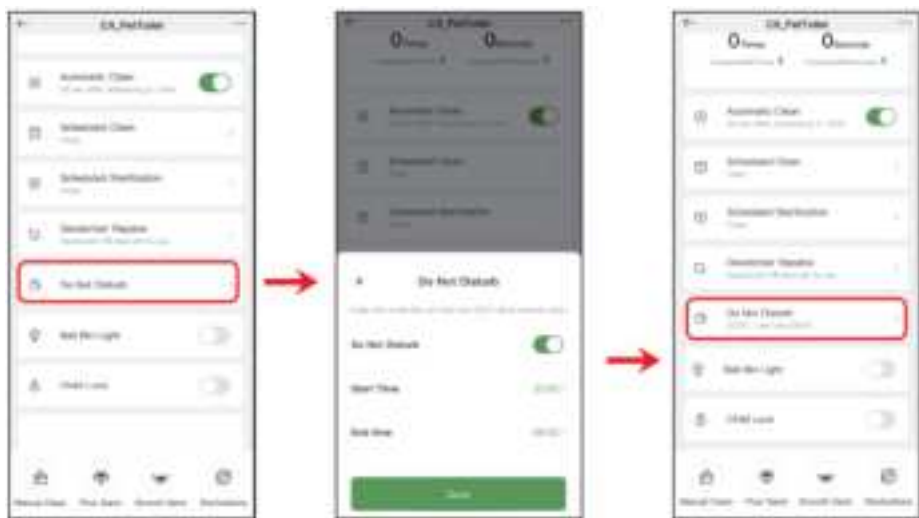
# Deodoriser Replacement

- 1. To check how long the deodoriser has been in use and how many days remain, press the 'Deodoriser Replace' button in the app. A pop-up will appear showing the remaining time.
- 2. If you wish to proceed, press 'Confirm' to replace or 'Cancel' to close the prompt.
- 3. When it is time to replace the deodoriser, the SmarterHome app will display a notification: 'Deodoriser Replace Alert'.



# Sleep Mode

When placing the cat litter box in a bedroom, you can activate 'Do Not Disturb' mode in the SmarterHome app to prevent the device from operating during the night and disrupting sleep.



**Note:**

- When 'Do Not Disturb' mode is active, only manual button operations are supported.
- Scheduled cleaning will still occur. If the scheduled time overlaps with 'Do Not Disturb' mode, the device will perform cleaning without sterilisation and then return to 'Do Not Disturb' mode.

# Child Lock

To enable or disable the child lock, tap 'Child Lock' in the SmarterHome app or press and hold the 'Sand Pouring' button on the control panel for 5 seconds.

# Interior Light

To check inside the ball bin at night, you can turn on the interior light via the app.

**Note:**  
Child lock mode only restricts the use of buttons on the device's control panel.



# Usage Summary

- **Day:** View usage statistics for the past 24 hours.
- **Week:** View usage data across the last 7 days.
- **Month:** View daily usage statistics for the current month.
- **Year:** View monthly usage data across the year.



# Cleaning & Care

## Replacing the Waste Bag

When the Wi-Fi button flashes red or the SmarterHome app sends a message saying 'The waste bin is full', the waste bag needs to be replaced.

1. Open the cover.
2. Remove the waste bin cover followed by the bin and finally remove the deodorant.
3. Unlock the two side locks and lift out the full waste bag.



4. Insert a new waste bag.
5. Secure the top cover.
6. Reinsert the assembled waste bin and waste bin cover into the main unit. Ensure the waste bag is positioned downwards.

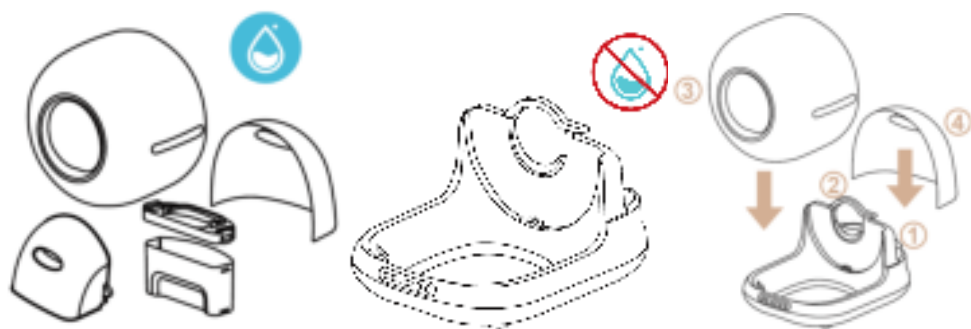


## Cleaning the Unit

1. Remove the Rear Cover.
2. Remove the waster bin cover followed by the bin and finally remove the deodorant.
3. Lift the Main Housing Lock and remove the Main Housing.





4. The Waste Bin, Main Housing and Rear Cover can all be washed with water and a mild detergent.
5. The Main Unit is not waterproof and must only be cleaned with a soft, damp cloth only.
6. After cleaning, ensure all parts are thoroughly dried before reassembling in the correct order.



### Note:

The deodorant lasts for up to 14 days. You can check its remaining usage time in the SmarterHome app.

# Troubleshooting

Icon	Colour	Status	Reason	Solution
	Blue	Flashing	Wi-Fi not connected.	Long press Wi-Fi button for 5 seconds to place in pairing mode.
	Red	Flashing	Full Waste box or object blocking.	Replace waste bag or check whether there is foreign material in the unit.
		Steady	Waste bin cover is not installed well.	Install the waste bin cover properly.
	Blue	Steady	Litter added without calibration; machine stops working.	Press and hold the 'Smooth Sand' button for 5 seconds or wait 5 minutes. This icon will remain lit when a cat is inside.

## FAQ

**Q:** Why does the app's weight data not match my cat's weight?

**A:** Your cat may be partially entering the unit (e.g., only with its front paws), which can affect the sensor reading.

**Q:** Why is the control panel showing a red or blue light and the device not working?

**A:** Refer to the fault indicators above and the 'Control Panel Guide' for troubleshooting steps.

**Q:** What type of cat litter should I use with this product?

**A:** Use mixed litter, tofu litter, bentonite clay, or mineral sand. The particle size should not exceed 8mm.

**Q:** Why does the Wi-Fi button turn red after replacing the litter bag?

**A:** The waste bag may extend beyond the infrared sensor's detection line. Reposition and flatten the bag. Also check that the bin is not overfilled, which may raise it above the sensor.

**Q:** Why is the pet weight reading inaccurate?

**A:** Ensure there is no litter in the unit. Then, long press the 'Clean' button for 5 seconds to recalibrate. Only perform this if necessary.

**Q:** Why does the 'Smooth Sand' button light up blue when adding litter or when a pet enters the ball bin?

**A:** The sensors have detected movement or additional weight. If adding litter, press and hold 'Smooth Sand' for 5 seconds to recalibrate, or wait 5 minutes for auto-calibration. If a pet enters, the system will continue operating normally.

**Q:** Why doesn't the device stop immediately when my cat enters the litter box?

**A:** The sensors require 1–2 seconds to confirm presence. The device includes safety features to prevent any risk to your pet during this brief delay.

**Q:** Why isn't all the litter removed during a pouring cycle?

**A:** Litter may be layered within the ball bin. It is recommended to run the 'Sand Pour' function twice to ensure complete removal.

**Q:** Why can't the app upload my cat's weight immediately when it enters the litter box?

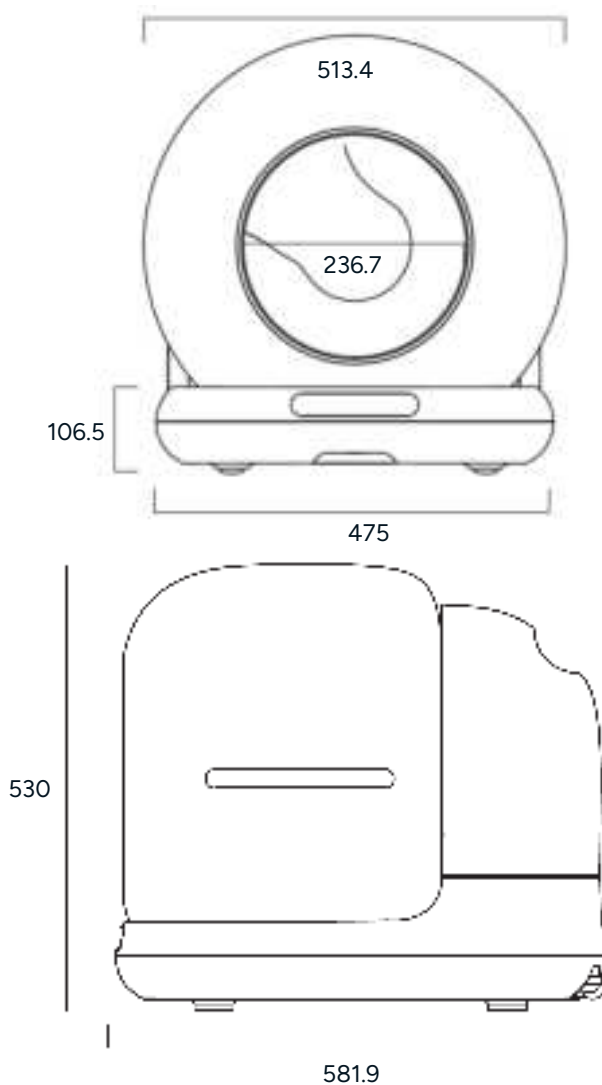
**A:** The sensors need time to stabilise. The system will evaluate the weight and push the data to the app approximately 10 seconds after stable detection.



# Specifications

Internal Capacity	72L
Waste Collection Capacity	7L
Litter Capacity	5L
Motion Sensor	Yes, when animal approaches, the barrel will stop.
Gravity Sensor Motion	Yes
S/N Ration	<45dBA
Motor Life	≥2000h
Rated Power	24W
Power Adaptor	DC12V 2A
Operating Temperature	-25°C~55°C
Dimension (W x D x H)	513.4 x 581.9 x 530mm
Net Weight	8.05kg
Gross Weight	9.5kgs

## Dimensions



[illegible]

### **Need more information?**

We hope that this user guide has given you the assistance needed for a simple set-up.

For the most up-to-date guide for your product, as well as any additional assistance you may require, head online to [help.Kogan.com](http://help.Kogan.com).

