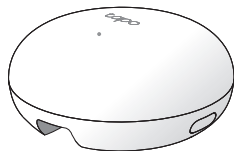


Quick Start Guide

Smart IOT & IR Hub



7106511534 REV1.0.0

*Images may differ from your actual product.

Meet Your Tapo Hub

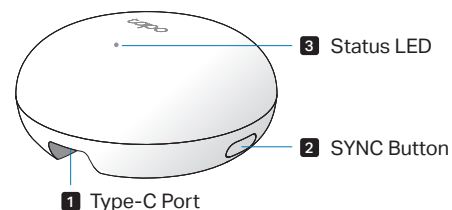
Transform your home into a smart haven with the Tapo Hub.

• Manage Your Tapo Accessories

The Sub-1G ultra-low-power performance ensures seamless wireless connections with a variety of Tapo accessories, allowing you to control and monitor your home from anywhere.

• Manage Your IR Home Appliances

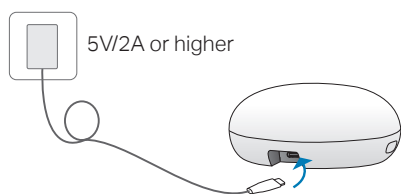
The built-in infrared transmitter enables you to manage IR appliances like TVs and air conditioners, turning traditional devices into smart ones effortlessly.



For frequently asked questions about the Tapo Hub, please visit <https://www.tp-link.com/support/faq/4128/>

01/ Power Up Your Hub

Plug the provided USB cable into the Type-C port, then connect it to a power outlet using a 5V/2A (or higher) adapter.



Note: The USB adapter is not provided.

02/ Set Up Your Hub

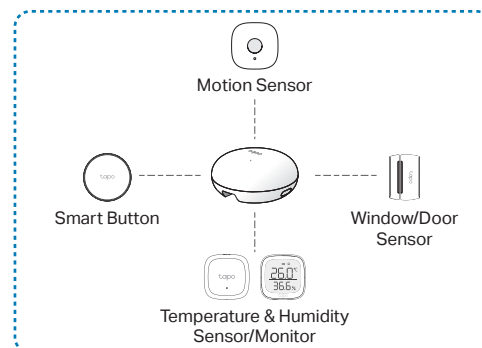
1. Get the **Tapo** app from the App Store or Google Play and log in with your TP-Link ID. If you do not have an account, create one first.



2. Tap the **+** button in the app. Select **Hubs/HomeBase** and then your model. Follow the app instructions to complete setup.

03/ Add Tapo Accessories

After the Tapo Hub is successfully added, connect your Tapo devices to your hub.



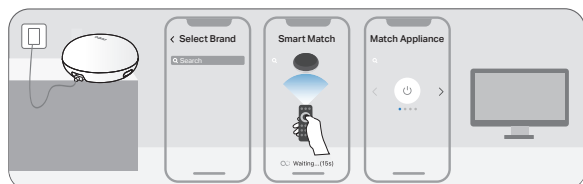
*More is coming soon.

04/ Add Remote Controls for Infrared Appliances

One remote is all you need to control all your IR appliances. Simply open the Tapo app, go to the **Status** page of the Tapo Hub to add a remote control with your preferred method.

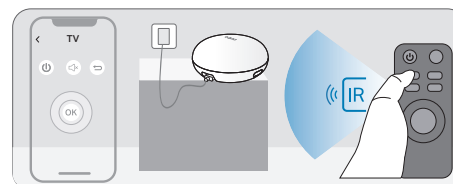
Method 1: Automatical Match

1. Search your appliance's brand.
2. (Optional) Point your physical remote control at the Hub and press any button to match your appliance.
3. Test a few buttons in the app for a more accurate match.
4. Save the remote control. The remote control setup is complete.



Method 2: Customized Learning

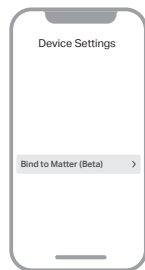
Customize your remote control by learning the buttons on it one by one. This is ideal for uncommon remotes or when only specific buttons are needed.



Bind to Matter

Once added to Tapo, you can integrate the Tapo Hub and its connected devices with other Matter-compatible ecosystems.

1. Update the hub's firmware to the latest version.
2. Go to **Device Settings > Bind to Matter** to find the Matter setup code and add to an ecosystem.



Third-Party Services

Control home appliances via voice commands. Go to [Me > Third-Party Services](#) in the Tapo app to link Tapo to Alexa, Google Assistant, and other third-party services.

For detailed instructions, please visit:

• **Google Home Assistant:**

<https://www.tp-link.com/support/faq/2779/>

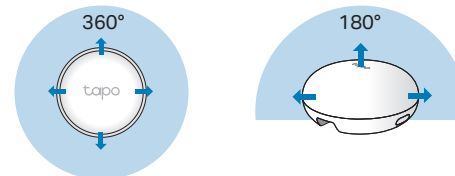
• **Amazon Alexa:**

<https://www.tp-link.com/support/faq/2780/>



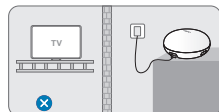
Infrared Signal Direction

To ensure optimal performance, avoid placing your infrared appliances directly behind the Tapo Hub.



Placement Tips

- Keep the hub and your appliances free from walls or obstacles that may block infrared signals.
- Avoid direct sunlight or placing the front of the hub too close to incandescent lamps to prevent interference.
- Keep the hub away from large metal surfaces, as they may weaken the Sub-1G signal strength.

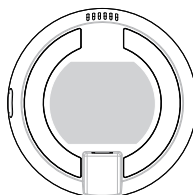


Mount to the Wall

Position your hub within the infrared signal range. You can place it on a flat surface or mount it on a wall. There are two mounting options for wall installation:

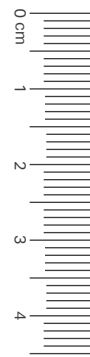
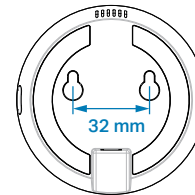
Method 1: Adhesive Mount

1. Attach the included adhesive to the back of the Tapo Hub.
2. Clean the wall surface, then firmly press the hub with the adhesive onto the clean wall.



Option 2: Screw Mount

1. Mark two screw hole locations on the wall, spaced 32 mm apart.
2. Drill two screws (M3-M4 size) into the wall, then securely attach the hub.



Button Explanations

SYNC Button

- **Press for 1s:** Enter pairing mode to connect your Tapo accessory.
- **Press and hold for 5s:** Reset Wi-Fi settings while retaining other configurations.
- **Press and hold for 10s:** Restore all settings to factory defaults.

LED Indications

Solid white	Starting up; Connected to Cloud
Blinking white & amber slowly	Ready for setup
Blinking amber quickly	Connecting to Wi-Fi; Offline
Solid amber	Connected to Wi-Fi
Blinking white slowly	Hub updating
Blinking white & amber quickly	Factory resetting
Blinking white once	Emitting IR signal
Blinking white twice	Learning button succeeded
Blinking white slowly	Pairing with Tapo accessory

Safety Information

- Keep the device away from water, fire, humidity or hot environments.
 - Do not attempt to disassemble, repair, or modify the device. If you need service, please contact us.
 - Do not use the device where wireless devices are not allowed.
 - This equipment can be powered only by equipment that complies with Power Source Class 2 (PS2) or Limited Power Source (LPS) defined in the standard of IEC 62368-1.
 - Operating Temperature: -10 °C ~ 40 °C (14 °F ~ 104 °F)
- Please read and follow the above safety information when operating the device. We cannot guarantee that no accidents or damage will occur due to improper use of the device. Please use this product with care and operate at your own risk.

Support

For technical support, the user guide, warranty, and other information, visit <https://www.tapo.com/support>.

FCC WARNING

•FCC Statement

This equipment has been tested and found to comply with the limits for a Class B digital device, pursuant to part 15 of the FCC Rules. These limits are designed to provide reasonable protection against harmful interference in a residential installation. This equipment generates, uses and can radiate radio frequency energy and, if not installed and used in accordance with the instructions, may cause harmful interference to radio communications. However, there is no guarantee that interference will not occur in a particular installation. If this equipment does cause harmful interference to radio or television reception, which can be determined by turning the equipment off and on, the user is encouraged to try to correct the interference by one or more of the following measures:

- Reorient or relocate the receiving antenna.
- Increase the separation between the equipment and receiver.
- Connect the equipment into an outlet on a circuit different from that to which the receiver is connected.
- Consult the dealer or an experienced radio/TV technician for help.

FCC Radiation Exposure Statement

This device complies with FCC radiation exposure limits set forth for an uncontrolled environment and it also complies with Part 15 of the FCC RF Rules. This equipment must be installed and operated in accordance with provided instructions and the antenna(s) used for this transmitter must be installed to provide a separation distance of at least 20 cm from all persons and must not be co-located or operating in conjunction with any other antenna or transmitter. End-users and installers must be provided with antenna installation instructions and consider removing the no-collocation statement.

This device complies with Part 15 of the FCC Rules.

Operation is subject to the following two conditions:

- (1) this device may not cause harmful interference, and
- (2) this device must accept any interference received, including interference that may cause undesired operation.

Caution!

Any changes or modifications not expressly approved by the party responsible for compliance could void the user's authority to operate the equipment.