

## TriNet + Integration User Guide

### Overview

The integration between TriNet and Multiplier allows your HR Personnel to access certain information of your international workers (“professionals”) from Multiplier that is displayed in TriNet’s platform via Single Sign-On.



### Data Sync

The synchronization of international workers' information between TriNet and Multiplier allows you to view your entire company roster in a single place in TriNet.

Multiplier professionals will be added to TriNet as international workers, and the two systems will sync continuously to keep the international workers' data viewed in TriNet up to date. You are still expected to manage your global workforce in the Multiplier system.

With the integration enabled, all Multiplier professionals will be loaded in TriNet as follows:

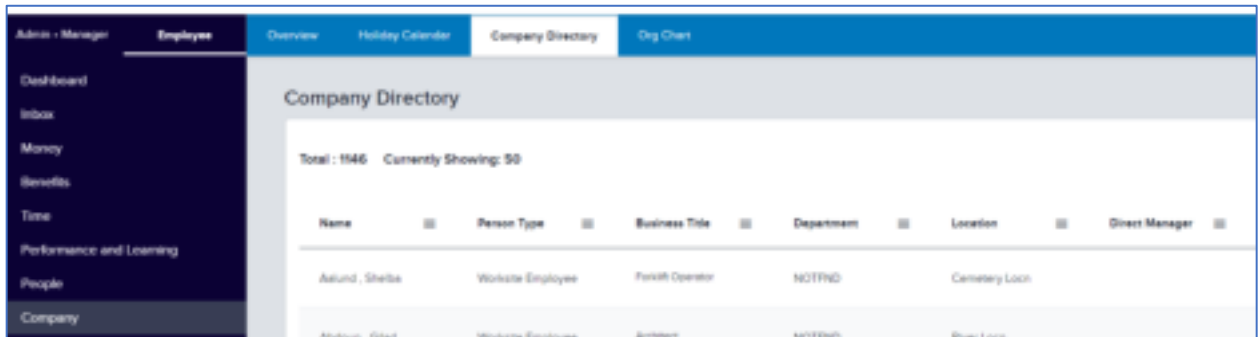
1. All international workers will be added to one single department called **MP - International Workers**.
2. A unique work location will be created for each country you manage professionals for in Multiplier. The location will be named **MP - country code**.
3. The following information will be shared between the systems for each of your international workers:
  - a. Name (primary and preferred)
  - b. Home Address
  - c. Job Title
  - d. Work Email
  - e. Work Phone
  - f. Start Date/Seniority Date

Only professionals with statuses of **Active** will be synced. All others will be ignored.

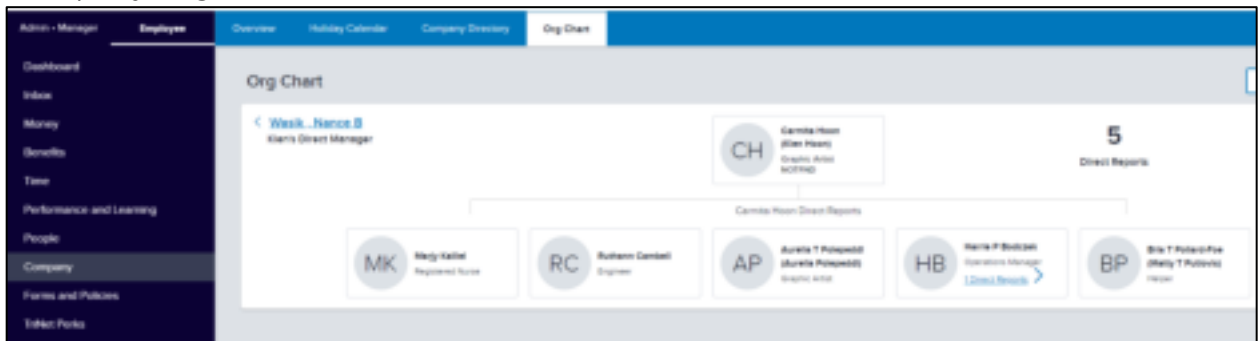
4. Once the international workers are added to the TriNet platform, the following events will be tracked in Multiplier and will be reflected in TriNet:
  - a. Termination
  - b. Job Title change
  - c. Name change
  - d. Home address change
  - e. Work contact Information (email, phone) change

Once synced, Multiplier's managed international workers will be available in the following functions in TriNet:

### 1. Company Directory

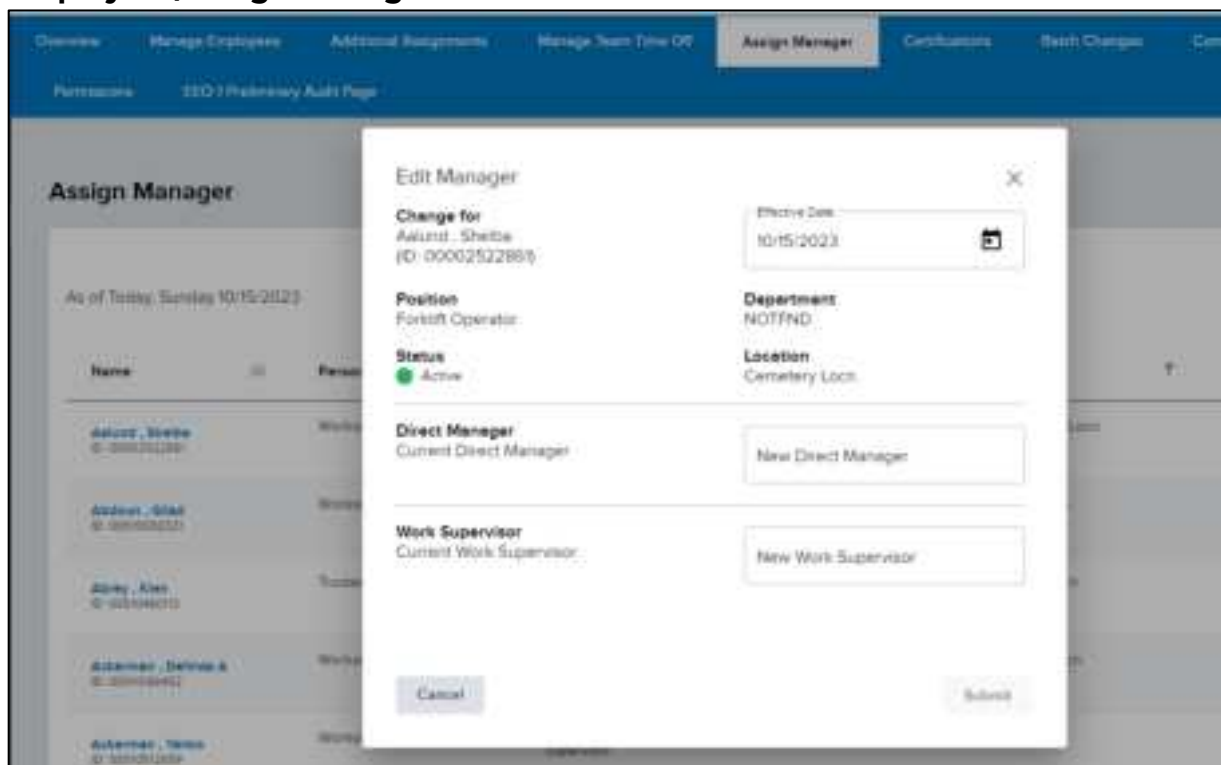


### 2. Company Org Chart



### 3. Census Report

You will also be able to assign the manager role to international workers via the **Employees/Assign Manager** function.



## Single Sign-On

Upon configuration of the integration, single sign-on between TriNet and Multiplier will be enabled to allow you to launch Multiplier directly from the TriNet platform and automatically log in.

The following permissions will be able to access Multiplier:

- HR Security
- HR Authorizer
- HR Administrator
- Payroll Entry

The single sign-on will auto-provision admins on the Multiplier site if they do not exist. The following role mapping will be applied when auto-provisioning administrators:

TriNet Role	Multiplier Role
Payroll Entry - only	Payroll access
All other role combinations	Admin

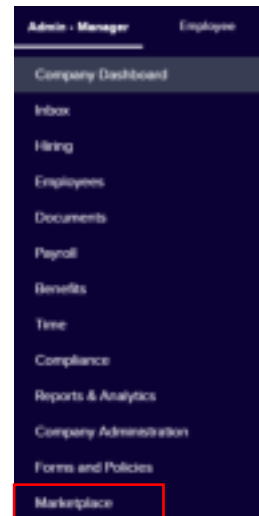
In this scenario:

1. TriNet serves as an Identity Provider.
2. Multiplier serves as a Service Provider.

## Section 1: Set up Integration with Multiplier

### Step 1: Configure the Integration in TriNet

- Click on **Marketplace** in the navigation menu.



- Under **All Apps**, search for the **Multiplier** card and click **View Details**.
- Click **Set up Integration**.

Access required for the integration with Multiplier.

With this integration, certain information of my international workers ("professionals") in Multiplier will be shared on TriNet's platform.

By continuing, I agree to:

- Allow Single Sign-On with Adobe account provisioning.
- Share the following information for my professionals in Multiplier with TriNet:
  - Primary First & Last Name
  - Preferred First & Last Name
  - Home Address
  - Email Address (Work & Personal)
  - Employment Start Date
  - Employment Termination Date
  - Job Title
  - Work Country

- Click **Accept**
- The access keys are now generated. This is the **only** time you will see the access keys. It is NOT recommended to store them on your computer. Instead, please go to the Multiplier platform in another tab to complete the integration setup.

Single Sign-On is now configured. Next, you will link your accounts in the Company Dashboard section.

Company ID:

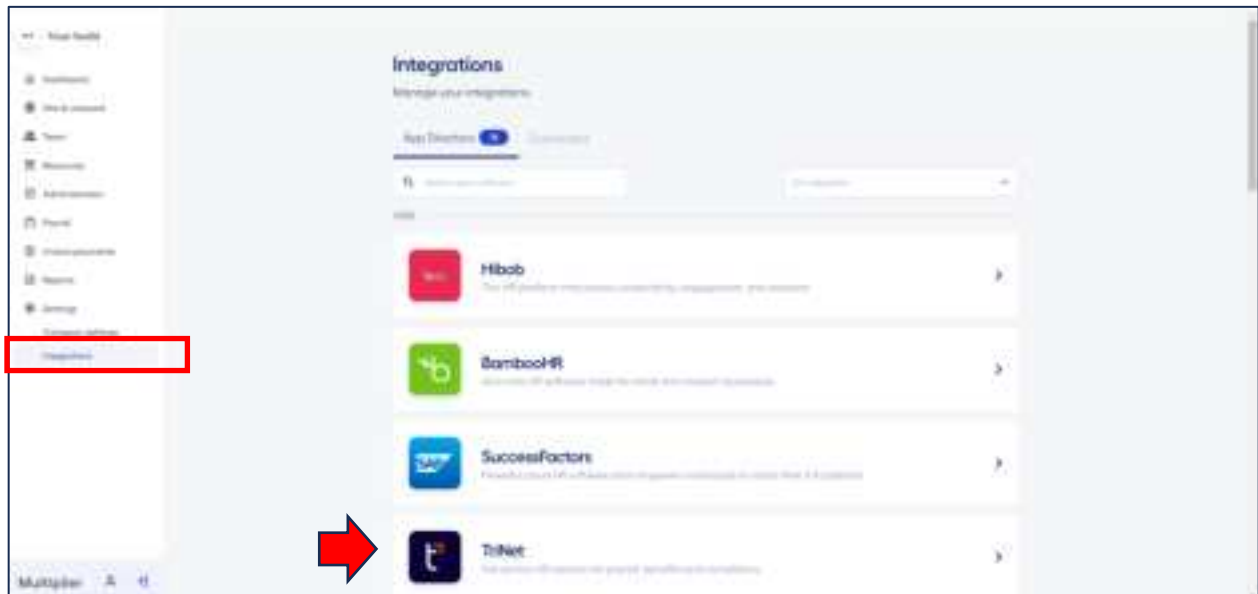
Client ID:

Client Secret:

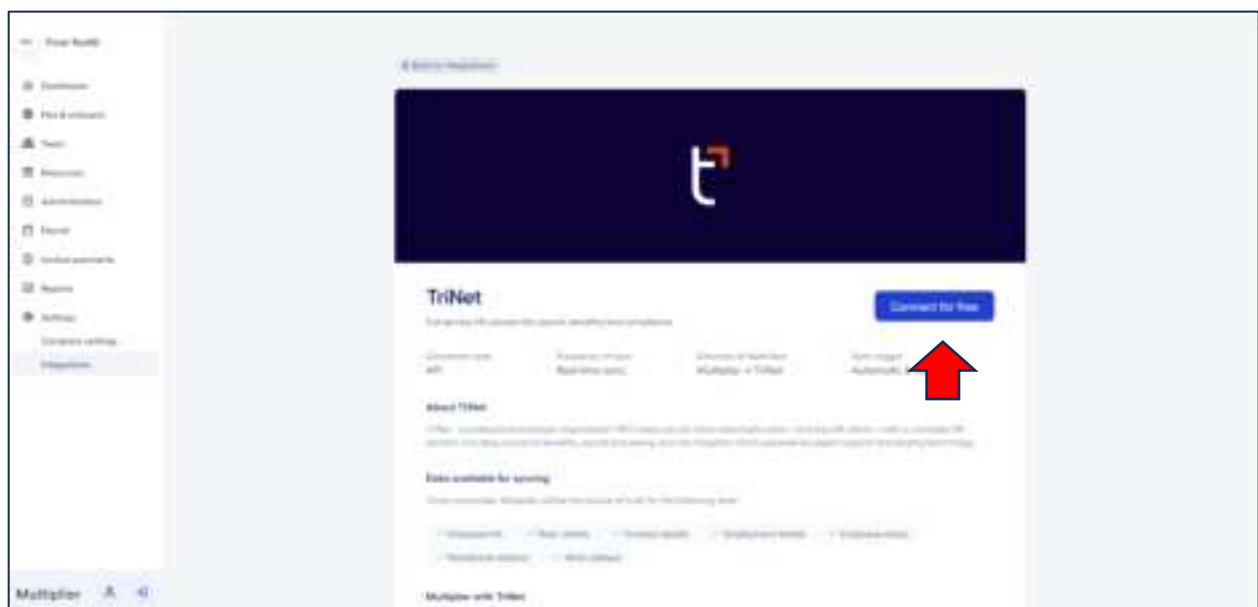
(Important) Please make sure you are (strictly confidential) to complete the setup with your records as this is the only time you are provided these key values.

## Step 2: Configure the Integration in Multiplier

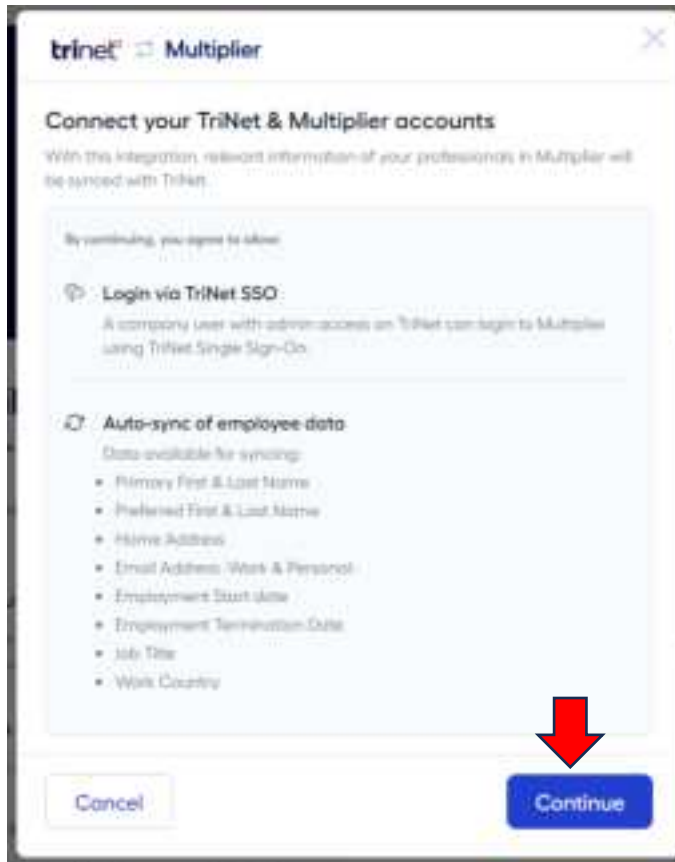
Log in to Multiplier as a company administrator and locate TriNet in the Settings> Integrations section:



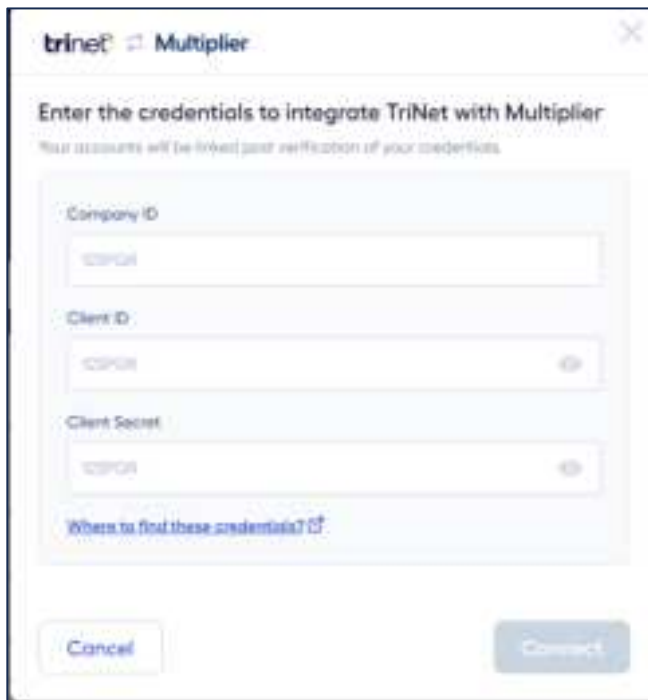
- Click **Connect for free**:



- Click **Continue**.



- Copy/Paste the credentials from the TriNet Integration Center and click **Connect**:



- The integration is now enabled.

- Now you can complete the integration on the TriNet side. Click **OK**.



Single Sign-On is now configured! Next, you will link your accounts in the Company Dashboard section.

Company ID:

Client ID:

Client Secret:

Important: Please make sure you use these credentials to complete the setup with your vendor as this is the only link you are provided these credentials.

**OK**

Multiplier will now be available under the **My Connected Apps** section.

## Section 2: SSO to Multiplier

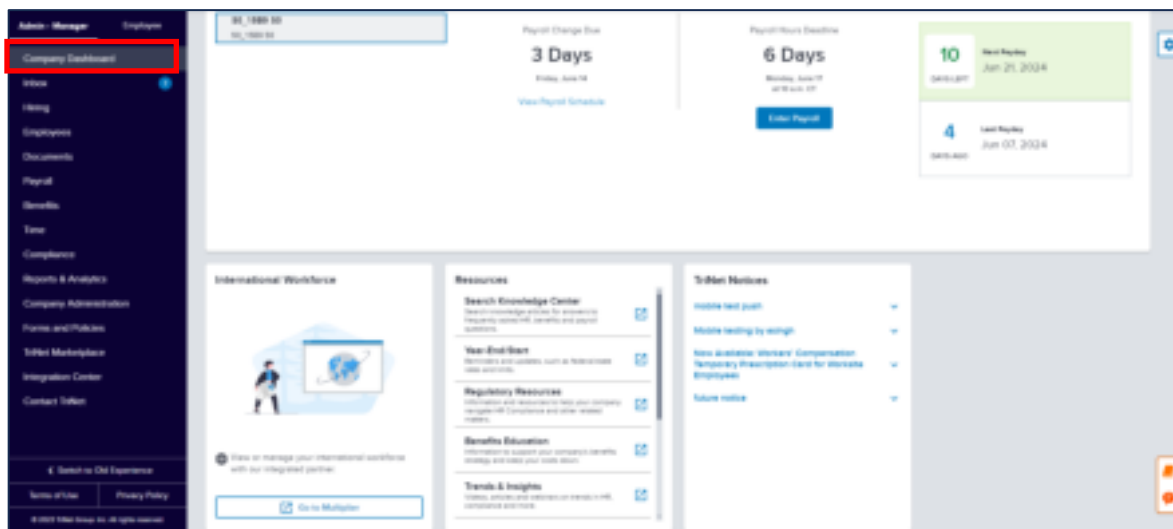
Once the integration is enabled, authorized personnel will have access to Multiplier directly from the TriNet platform.

The following permissions will see the Multiplier links throughout the portal:

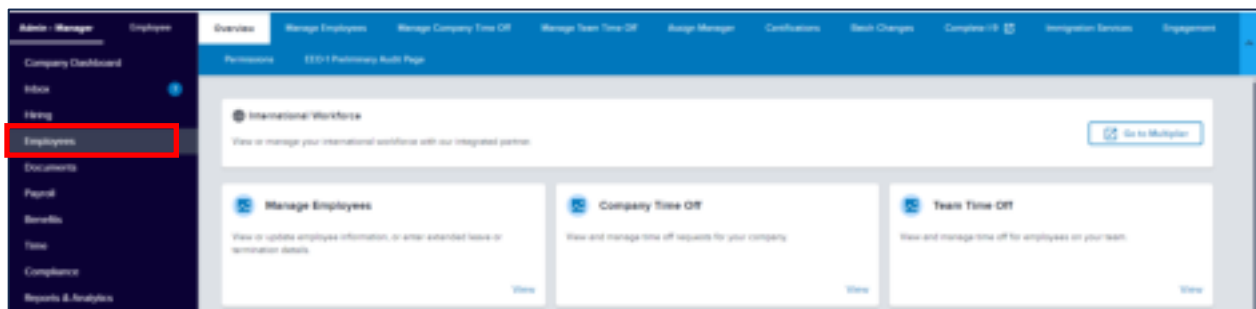
- HR Security
- HR Authorizer
- HR Administrator
- Payroll Entry

Access to Multiplier will be visible in:

1. Company Dashboard:



2. Employees:



3. Manage Employees:





## Section 3: Disconnecting the Integration

Disconnecting the integration will stop both:

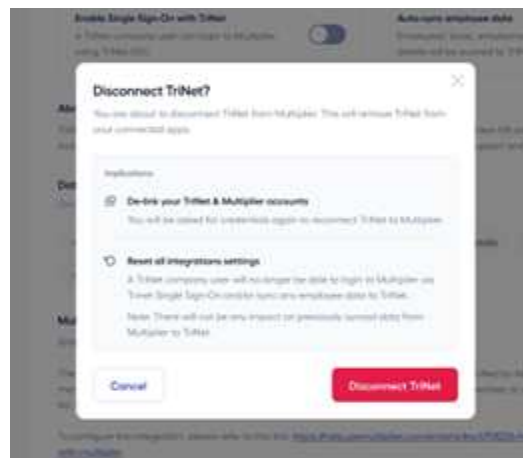
- Data Integration
- Single Sign-On logic

**To properly disconnect the integration and avoid any errors, please disconnect in the following order:**

1. Multiplier
2. TriNet

### Disconnect in Multiplier

- In Multiplier, locate the TriNet integration in Partners Integrations and click **Details**.
- 
- Click **Settings** and delete the integration.



The data synchronization is now stopped, **but it is important to disconnect the integration on the TriNet side as well.**

## Disconnect in TriNet

- In Marketplace under **My Connected Apps**, locate the Multiplier app and click **Disconnect**.

It is important to disconnect in TriNet as well so that API access keys are removed and can no longer be used.

© 2024 TriNet Group, Inc. All rights reserved. This communication is for informational purposes only, is not legal, tax or accounting advice, and is not an offer to sell, buy or procure insurance. TriNet is the single-employer sponsor of all its benefit plans, which does not include voluntary benefits that are not ERISA-covered group health insurance plans and enrollment is voluntary. Official plan documents always control and TriNet reserves the right to amend the benefit plans or change the offerings and deadlines.