



These instructions must be read
prior to installation
and use!



HELLA

Cassette awning CLEO 7040

- ☒ Installation instructions
- ☒ Operating guidelines

Table of Contents

Preliminary remarks HELLA Cassette awning CLEO 70403
General notes4
CE marking.....5
Safety instructions6
Designated use10
Servicing, maintenance and repair11
Operating guidelines.....14
Operating guidelines.....15
Before installation.....17
Overview cassette awning CLEO 704018
Overview tensioning bracket types19
Installation of wall / ceiling brackets.....21
Rafter bracket installation23
Installation on concrete.....24
Installation on brickwork.....27
Installation on wood.....29
Installation on concrete ceiling face, installation set 931
Further installation situations, installation set 934
Installation of the awning.....35
Adjusting the awning38
Adjusting the awning44
Electric commissioning and overview table power45
Activation guidelines for electric drives.....47
Wiring diagram for motors with switch operation48
Wiring diagram for motors with Somfy io.....49
Wiring diagram for motors with elero radio50
Wiring diagram for motors with ONYX.NODE51
Wiring diagram for motors with ONYX.CONNECTOR.....52
Overview LED lighting with remote control54
Replacing a folding arm with integrated LED lighting55
Technical data58
Configuration59
Operation.....60
Operating guidelines.....61
Ideal use of the radio signal.....61
Fault removal.....62
Disposal.....62
Commissioning/functional check69
Adjustment - Somfy Eolis 3D radio-controlled wind sensor70
Adjustment - elero Protero 868 radio-controlled wind sensor70
Removal and Disposal.....71
Handing over report (for the fitter)72

Preliminary remarks HELLA Cassette awning CLEO 7040

With this HELLA product you have opted for a high-quality product with a most up-to-date technology that can nevertheless be easily installed and operated. In these instructions we describe the basic installation, commissioning and use.

- ➞ For authorized specialist staff
- ➞ For the consumer (user)

The following symbols will assist you with the installation or use and require a safety-conscious conduct:



Attention!

This symbol indicates instructions that, if disregarded, can put the user in danger.



Attention!

This symbol indicates instructions that, if disregarded, can potentially result in damage to the product.



This symbol indicates instructions for use or helpful information.



This symbol requires you to act.



Attention!

This symbol indicates a risk of injury or danger to life due to an electric shock.



This symbol indicates parts of the product, for which you will find important information in these installation instructions.

General notes

➞ Questions

In case of questions concerning the installation or the use of your product, please consult your authorized specialist shop.

➞ Spare parts/repairs

Spare parts are available at your HELLA specialist shop. Only spare parts that are approved by HELLA are allowed to be used.

➞ Warranty/guarantee

Precondition for warranty and guarantee is a correct and regular maintenance of the sun protection device (at least once a year). Warranty claims are subject to statutory limitation periods. Service parts are excluded from the warranty; the same applies for changes in color and changes in characteristics caused by UV radiation.

➞ Liability

In case of non-observance of the directions and information given in these instructions and in case of improper operation or unintended use, the manufacturer shall not accept any warranty claims concerning any damage to the product. In these cases, the liability for consequential damage to any parts or persons is ruled out as well.

➞ Legal notes

The graphs and texts of these instructions were carefully prepared. We cannot be held liable for any errors and their potential consequences! Subject to technical modifications to the product and to these instructions! These instructions include copyrighted information. All rights reserved! The listed product or brand names are trademarks of the respective owners.

CE marking

The HELLA cassette awning CLEO 7040 is in compliance with the declaration of performance according to the Construction Products Regulation; if the unit is operated with a motor drive it is additionally in compliance with the Machinery Directive and the Guideline for Electromagnetic Compatibility; in case of proper use, the awning corresponds to the basic requirements of the harmonised standard EN 13561. The respective declarations are deposited with the manufacturers.



The CE identification applies for the delivery status of the product. Exceptions and specifications regarding the wind resistance of the installed awning are given in the respective product documentations. The product mounted meets the requirements of the specified standard only, if

- ➞ the awning is installed with the recommended type and number of brackets.
- ➞ during installation the information and instructions given in these instructions as well as the information and instructions of the manufacturers of the screws / dowels have been observed,
- ➞ the product is installed with the recommended type and number of fasteners / screws.

No changes, rebuildings or extensions, with the exception of those described in these instructions, are allowed with this product. The fixed CE-label expires with any change, rebuilding or extension.

Safety instructions



These installation instructions refer to prefabricated elements, that (1) for 100% are made from parts, which are defined by us, and (2) which are made in manufacturing processes, which are defined by us too; in all other cases we do not provide any guarantee!

The safety instructions as well as the appropriate instructions must be read carefully before installation and use. In case of non-observance of the directions and information given in these instructions and in case of improper installation and operation or unintended use, the manufacturer shall not accept any warranty claims concerning any damage to the product. In these cases, the liability for consequential damage to any parts or persons is ruled out as well.



- Follow the described installation steps and pay attention to recommendations and notes.
- Keep these instructions in a safe place.
- All installation and removal works, as well as maintenance and repair works are only allowed to be carried out by authorised and qualified specialist staff.
- If switching, automatic or radio control devices are used to operate the units, the information given in the enclosed instructions of the manufacturer must be observed.
- During operation do not put your hand into or touch movable parts.
- Ensure that clothing or body parts cannot get caught on the unit.
- Observe the regulations for prevention of accidents of the employer's liability insurance association!
- Before operation check the unit for visible damage. If the unit is damaged, it should not be used; please consult authorized specialist staff immediately.
- Risk of injury and accident due to the weight of the product!
- Take safety measures against the danger of squashing, especially when operating the unit with automatic devices.
- Place the operating switch within sight of the unit, but not near any of the moving parts.
- Never let children play with the unit.



A sun protection device with electric drive cannot be retracted without current. We therefore recommend the use of an emergency power generating unit or a motor with an emergency crank handle, especially in regions with frequent power failures.



Danger of suffocation!

Ensure that the foil cannot get into the hands of children. Keep the foil in a safe place.

Safety instructions



Attention! Risk of injury or danger to life due to an electric shock!

- Set-up, examination, commissioning and error correction of the unit must only be performed by authorised or trained expert staff (as per VDE 0100).
- Switch off the current to the connecting lines when working at the unit. There is danger to life! Take safety precautions against unintentional switching on!
- Check the electrical wires regularly for damage. Do not use the unit if any damage is found.
- Our electrically driven units are in accordance with the regulations for power plants acc. to VDE 0100. We cannot guarantee for the operational reliability of the unit with non-approved modifications.
- White motor cables are not UV-resistant and must therefore be routed in empty conduits, cable ducts, or similar.
- The enclosed installation instructions of the electrical devices supplied must be observed.



Units with motor drive:

The drives used are operated with a voltage of AC 230V/50Hz. Please check the power supply provided by your utility company before connecting. Any other voltage can destroy the drives.



Danger of squashing

To avoid at the best the danger of squashing in the area of movable parts, such as roller tube, cassette, folding arms, front rail etc., especially when automatic devices are used or when the unit is for example operated automatically by a wind controller or rain sensor, it is mandatory that the awning is installed in a height of at least 2,5 m or above, measured from the floor or a permanent access way.

Hereby it must be observed, that a distance of at least 0.40 m between the front rail and a fixed object is ensured, if the front rail, due to the inclination of the awning, goes below a height of 2.5 m, measured from the floor or a permanent access way.

If such an installation is due to the local situation not possible, the client has to take appropriate safety measures, such as a cover or placing the operating switch (touch contact switch) within sight of the awning.

Subject to technical modifications – Date of issue January/2023

7

Safety instructions



If it is necessary to lift the awning via ropes at a higher altitude, the awning must

- be removed out of the packaging.
- be tied to the pull ropes in such a way, that a slipping out of the awning is prevented,
- lifted evenly in a horizontal position.

The same applies for the removal of the awning.



It is not allowed that climbing aids are leaned against or fixed to the awning. They must have a stable base and provide a firm support. Only use climbing aids with an appropriate carrying capacity.



When working at higher heights, there is risk of falling. Please make sure that suitable fall protection devices are used.



Awnings are only allowed to be used for the purpose specified in the instructions for use. Changes, such as extensions or rebuildings, that are not provided by the manufacturer, are only allowed to be carried out with the manufacturer's written approval.

Additional loadings such as objects that are stuck to the awning or cable tensionings can damage the awning or lead to its crashing, and are therefore not allowed.

8

Subject to technical modifications – Date of issue January/2023

Safety instructions



Winter operation:

Snow or ice can destroy the unit.

The unit may only be operated, if no ice or snow is lying on the cover.

During this time automatic control devices must be switched to manual operation.



To prevent damage, please retract your sun protection device with rain, snowfall or wind.

If automatic control devices are used, adjust the wind controller analogously to the installed wind resistance class of your sun protection device.

Wind resistance class 0 = wind force <4 (Beaufort), a performance not required or not measured (according to DIN 13561) or a product, that does not comply with the requirements of the wind resistance class 1.

Wind resistance class 1 = wind force 4 (Beaufort), moderate breeze, moderate wind, moves twigs and thin branches, whirls up dust and loose paper
Velocity 20 – 27 km/h = 5.5 – 7.4 m/s

Wind resistance class 2 = wind force 5 (Beaufort), fresh breeze, fresh wind. Smaller deciduous trees start to sway, white crests are formed on lakes.
Velocity 28 – 37 km/h = 7.5 – 10.4 m/s

Subject to technical modifications – Date of issue January/2023

9

Designated use

➞ Sun protection

➞ Thermal protection

➞ Sight screen

➞ Anti-glare blind

➞ Rain protection (only partly!)

The inclination of the awning in the drawn-out position must be at least 14° to prevent water pockets when it is raining.

Also with a sufficient inclination, a complete denseness of the seams cannot be guaranteed when it is raining!

10

Subject to technical modifications – Date of issue January/2023

Servicing, maintenance and repair

With the purchase of your awning you have opted for a high-quality product. To enjoy your awning for as long as possible, please observe the following information:

Notes to awning covers made of brand acrylic fibres

Brand acrylic fibres, as used for awnings, are materials of the highest quality for awnings. As they are dope-dyed, these materials show the highest light- and color-fastness. In addition, their resistance to tearing and resistance to weather, rotting and environmental effects is unsurpassed. Furthermore, a special textile finishing makes them dirt-, water-, oil- and grease resistant. The awning cover is heavily tested. At the weaving plant, at the awning manufacturer and during awning fabrication. As with other covers, differences in the surface uniformity can also occur with the awning cover. When viewing from the top or seeing through, you will perhaps find small knots, spots of color, irregular runs of threads or minimal differences and displacements in the design and rapport, as well as differences in the color. Please note, that the awning will cause a different color effect in sunlight and in shade. Naturally, the optical color perception depends on the composition and the intensity of the emerging light. With increasing depth of color, more light will be absorbed and less will be reflected. Therefore dark coloured covers let through a small amount of light, while light colors let a lot of light through. Due to the part-absorption, the composition of the light shining through will be modified, which results in other color perceptions. Due to the coloured pigments embedded in the cover and the impregnation, shadings caused by crinkles or crumple folds can appear, that, especially with light colors, become visible as strips of shade.

The function, strength or density of the cover will not be reduced by that. Minor differences in colors between the different cover strips or differences in colors with regard to the collection of samples cannot be ruled out. The fabrication of several strips also with varying widths depends on the overall width of the awning.

Ripples in the cover and wrinkling at the seams can arise, because the cover is double rolled up at the seams.

The highest strain is on the seams of the cover. When rolling up the cover, the seams and hems lie on top of each other, intensifying the strain. Hems and seams will be pressed flat, increasing in length. As a result, the lateral seams of the cover can hang down slightly.

Sagging as a result of the own weight of the cover is possible. These specified phenomena are not faults in the awning cover, which have been overseen in the testing; they are unavoidable due to technical, material and physical regularities. They therefore do not entitle the customer to any refusal or reduction of the purchase price.

Correspondingly, the guidelines for the assessment of ready-made awning covers, summarized by the German Federal Association "Manufacture of technical textile registered association" (Bundesverband Konfektion Technischer Textilien e. V.), are also an integral part of our conditions of sale and delivery.

Servicing, maintenance and repair

Maintenance



Maintenance

All inspection and maintenance works must be carried out by a specialised company from HELLA or a HELLA partner. Regularly check the electrical wires of motor driven units for damage. Check the mechanical parts of your unit for visible damage. After exceptional events such as storm, hail, sleet, maloperation or the like, the unit must be checked for noticeable damage prior to operating it. If the unit is damaged, it must not be used; consult authorized specialist staff immediately. It is recommended to have the unit maintained by specialist staff on an annual basis. This way wear is detected at an early stage and damage to the unit is prevented.

Repair works



Repair works

Improper repair works may cause both risk of injury to persons or damage to the units. All repair works must be carried out by a specialised company from HELLA or a HELLA partner. Use original HELLA spare parts only.

Servicing, maintenance and repair

Cleaning



Cleaning

As a sun protection device fixed outside, the unit can get dirty in the course of time. This will not reduce the usability of your unit. The powder-coated parts of your unit will remain presentable for longer, if they are cleaned regularly with a soft woollen cloth.



Do not use solvents, alcohol (rubbing alcohol) or scouring cleansing agents!



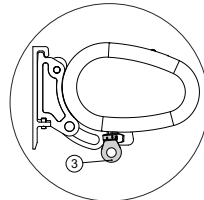
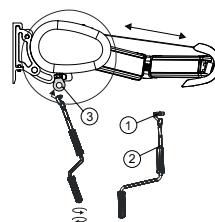
Leaves or other foreign material lying on the awning cover and in the awning cassette must be removed immediately. There is danger of damage or crashing to the awning.

Preventive measures



If you have to draw in the cover in a wet condition, please draw it out for drying when the next opportunity arises, to prevent marks caused by mould or mildew.

Operating guidelines



Model with crank handle drive



Stick the crank handle hook together with the crank rod into the eyelet.

The awning is extended or retracted by turning the crank rod.



The respective direction of rotation depends on the drive side.

In the direction of extending the stop position of the gear is limited by an override. In this position you hear a click, when turning the crank handle beyond this stop.

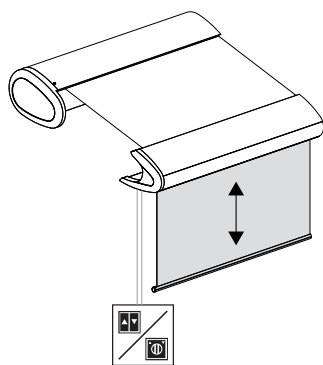


Do not use force when turning towards the upper stop.

Legend

- ① Crank handle hook
- ② Crank rod
- ③ Eyelet

Operating guidelines



Motor drive:



The roller blind can be raised or lowered by activating a remote control or a switch.



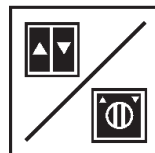
The end points of the drive are adjusted ex works. Should any modifications be necessary, please observe the instructions in Chapter "Alignment of the awnings – Adjusting the end positions".



Thermal protection:

The drives used are not suitable for a non-stop operation. The integrated thermal protection switches the drive off after approx. 4 minutes. After approx. 10 to 15 minutes, the drive is ready for use again.

Operating guidelines



Motor drive



The awning can be extended or retracted by activating a switch, a hand-held radio transmitter or an automatic device.



The end points of the drive are adjusted ex works. Please observe the enclosed instructions of the manufacturer of the drive, if any modification is required.

Lighting



By activating a radio transmitter or an automatic device the lighting is switched on or off or dimmed. You will find detailed information in the enclosed instructions of the manufacturer.

Hand-held radio transmitter with scroll wheel



Setting the scroll wheel function with hand-held radio transmitter "Somfy Situo 5 Variation A/M io":

- Open the rear housing cover
- Set the selector switch for the operating mode "E" to position 2



In this way the scroll wheel reacts to the LED lighting and heating. You will find detailed information in the enclosed instructions of the manufacturer.



Before installation



Check the product immediately for possible shipping damage and for compliance with the delivery receipt.



If parts are missing or damaged, please consult your supplier immediately.



Check the mounting base and ensure that the mounting material to be used complies with the given conditions to guarantee proper installation. In case of doubt, please seek advice from a specialist enterprise for fixing techniques.



The packaging cardboard box should not be exposed to humidity. To protect it from rain during transport, it should be covered by a foil.



Carry larger units by two persons. Transport and store the units carefully to prevent injury of persons and damage to the product.



Remove the packaging material carefully. When using a knife, be careful not to damage the packaging content and to avoid cuts!



Dispose of the packaging material via recycling.



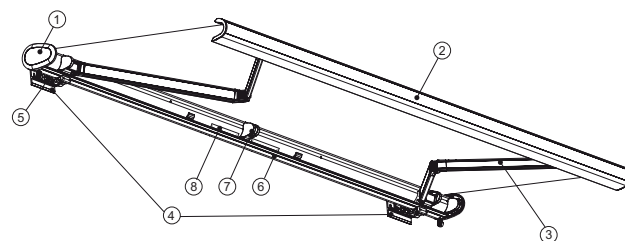
Caution!

A wrong installation can endanger the user seriously. Please strictly observe the installation instructions. Close off the place of installation.



When working at higher heights, there is risk of falling. Suitable ascent supports, scaffoldings and fall protection devices are to be used. Please make sure that the ascent supports stand solidly and provide a firm grip.

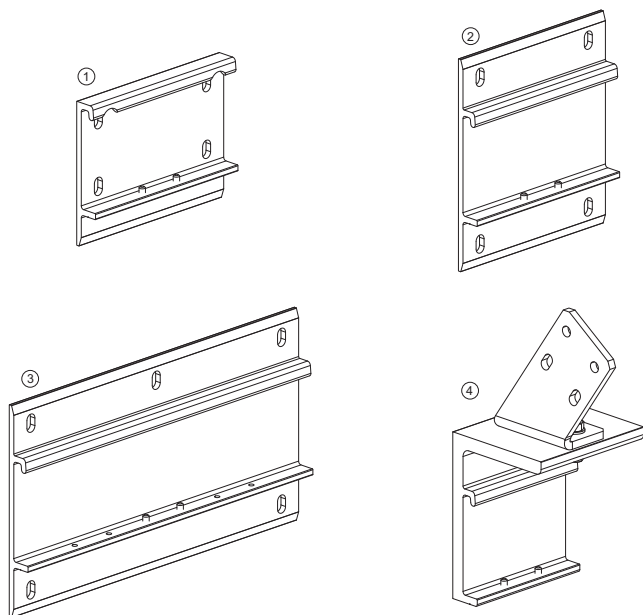
Overview cassette awning CLEO 7040



Legend

- ① End cap
- ② Front rail
- ③ Folding arm
- ④ Brackets
- ⑤ Swivel arm bearing
- ⑥ Cassette profiles
- ⑦ Supporting bearing (acc. to design)
- ⑧ LED control unit (acc. to design)

Overview tensioning bracket types



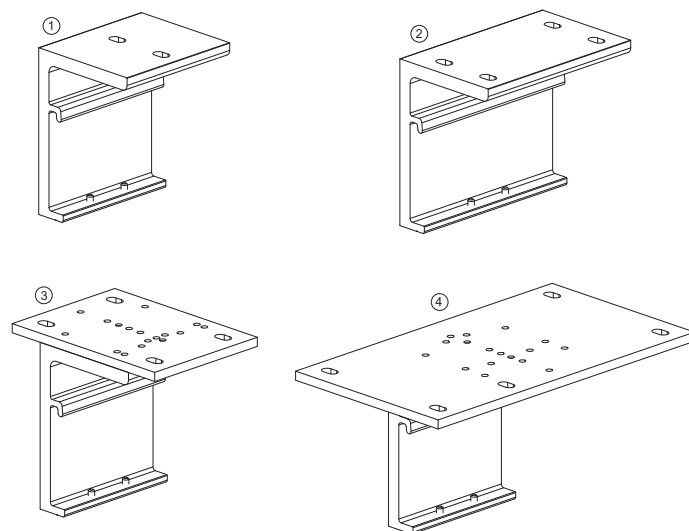
Legend

- ① Wall bracket type B (03630505)
- ② Wall bracket type C (03630506)
- ③ Wall bracket type D (03630507)
- ④ Rafter bracket type K (03630515)

Subject to technical modifications – Date of issue January/2023

19

Overview tensioning bracket types



Legend

- ① Ceiling bracket type E (03630511)
- ② Ceiling bracket type F (03630512)
- ③ Ceiling bracket type G (03630513)
- ④ Ceiling bracket type H (03630514)

20

Subject to technical modifications – Date of issue January/2023

Installation of wall / ceiling brackets

You specified the number, form and type of brackets on purchasing the awning in accordance with the size, the mounting base, the screw pull-out forces, the mounting material and the wind resistance classes. Recommendations can be found in our awnings price list and the product-related calculation tables.



Before starting the installation, please check whether the details you gave in your order concerning the mounting base comply with the given mounting base. In case of doubt, please obtain information from a specialist shop or a structural engineer.

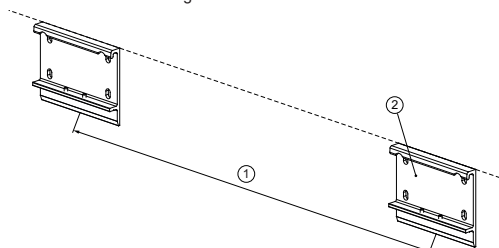


If there are any discrepancies that could jeopardise the safety, the installation must not be carried out. The wind class given may need to be reduced.



Mark the position of the brackets (2) correspondingly:

- Determine the position for the holes of the fastening screws (measure, adjust, mark).
 - Drill holes, align and affix brackets.
- Please observe the maximum allowable offset (\pm cm)
- Check the alignment of the brackets by means of a level or a plumb line. The brackets must be situated on one level both horizontally and vertically!
 - Irregularities in the mounting base must be equalised accordingly.
 - Observe the torque indications of the anchor manufacturer when tightening the screws. Please note, that the bore hole geometry is decisive for the load-bearing capacity of an anchor.
 - All elongated holes defined in the bracket must be used for fastening.



Legend

- ① Distance between the fixing brackets
- ② Bracket (type B)

Subject to technical modifications – Date of issue January/2023

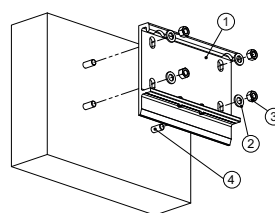
21

Installation of wall / ceiling brackets

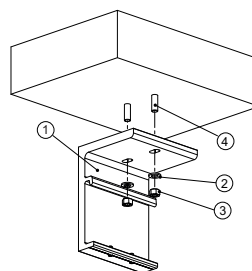


Check the mounting base and determine the appropriate mounting material taking into account the mounting base and the fixing devices. Information on the pull-out forces can be found in the documents in force.

Fix the brackets to the mounting base in accordance with the working guidelines.



Wall installation



Ceiling installation

Legend

- ① Brackets
- ② Plain washer
- ③ Nut
- ④ Mounting material

22

Subject to technical modifications – Date of issue January/2023

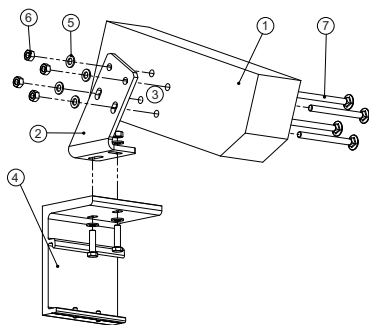
Rafter bracket installation



Check the rafters (1) for their material condition or for sufficient stability. Align the rafter holder (2) and fix it to the rafter. Based on the holes of the rafter holder, create the relevant through holes (3) and attach the holder. Check if the holding device fits well. Connect the rafter holder and the ceiling bracket (4) by means of the enclosed threaded screws and nuts and align them.



The brackets must be situated **on one level** both horizontally and vertically. It may be necessary to level out irregularities on the mounting base.



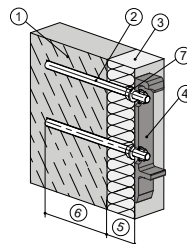
Legend

- | | |
|-------------------------|---------------------|
| ① Rafter | ⑤ Plain washer |
| ② Rafter holding device | ⑥ Nut |
| ③ Mounting holes | ⑦ Mounting material |
| ④ Ceiling bracket | |

Subject to technical modifications – Date of issue January/2023

23

Installation on concrete



Installation of the anchor bolts as per approval ETA-05/0069:

- Drilled hole preparation $\varnothing 12$ mm



Installation of the attachment:

- Tightening torque as per ETA-05/0069

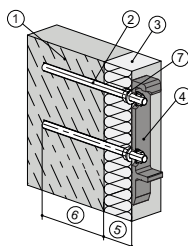
Legend

- | |
|--|
| ① Concrete |
| ② Installation set 1; anchor bolt FAZ II M12 |
| ③ Bracket |
| ④ Minimum anchoring depth - 70 mm |

24

Subject to technical modifications – Date of issue January/2023

Installation on concrete up to 60 mm ETICS



Installation of the anchor rod as per approval ETA-12/0258:

- Drilled hole preparation $\varnothing 14$ mm
- Observe the anchoring depth and the minimum edge distance!
- Drilled hole cleaning
- Fill drilled hole with mortar
- Slide the anchoring element into the drilled hole
- Wait for the curing time



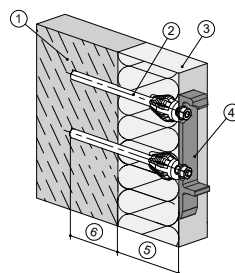
Installation of the attachment:

- Cut free lock nut in the ETICS
- Align lock nuts (1 mm before the plaster level) and then seal the expansion joint
- Cut the threaded rod to the correct length
- Screw down the bracket

Legend

- | | |
|--------------------------------------|---|
| ① Concrete | ⑤ Thickness of the non-bearing layer <60 mm |
| ② Installation set 8; anchor rod M12 | ⑥ Anchoring depth 140 mm = drilled hole depth |
| ③ ETICS | ⑦ Lock nut + washer |
| ④ Bracket | |

Installation on concrete 60-200 mm ETICS



Installation of the anchor rod as per approval ETA-02/0024:

- Drilled hole preparation $\varnothing 18$ mm
- Observe the anchoring depth and the minimum edge distance!
- Drilled hole cleaning
- Fill drilled hole with mortar
- Slide the anchoring element into the drilled hole
- Wait for the curing time



Installation of the Thermax as per approval Z-21.8-1837:

- Mill open the thermal insulation prior to injection
- Sealing of the expansion joint

Installation of the attachment:

- Tightening torque as per Z-21.8-1837
- Sealing of the free elongated hole parts



Legend

- | | |
|--|---|
| ① Concrete | ④ Bracket |
| ② Installation set 3; Thermax 16/170 M12 | ⑤ Thickness of the non-bearing layer up to 200 mm |
| ③ ETICS | ⑥ Anchoring depth 140 mm = drilled hole depth |



Depending on the thickness of the non-bearing layer, different brackets must be used (60-170 mm; 170-200 mm).

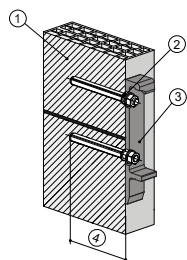
Subject to technical modifications – Date of issue January/2023

25

26

Subject to technical modifications – Date of issue January/2023

Installation on brickwork



Installation of the anchor rod as per approval ETA-10/0383:
Depending on the type of stone, the injection anchor sleeve must be used!

- Drilled hole preparation $\varnothing 12$ mm without sleeve
- Drilled hole cleaning
- Fill drilled hole (anchor sleeve) with mortar
- Slide the anchoring element into the drilled hole
- Wait for the curing time

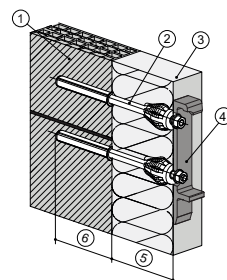


Installation of the attachment:
- Tightening torque as per ETA-10/0383

Legend

- ① Brickwork
- ② Installation set 2; anchor rod M10
- ③ Bracket
- ④ Anchoring depth 130 mm drilled hole depth

Installation on brickwork 60-170 mm ETICS



Installation of the anchor rod as per approval ETA-10/0383:
Depending on the type of stone, the injection anchor sleeve must be used!

- Drilled hole preparation $\varnothing 18$ mm without sleeve
- Drilled hole cleaning
- Fill drilled hole (anchor sleeve) with mortar
- Slide the anchoring element into the drilled hole
- Wait for the curing time



Installation of the Thermax as per approval Z-21.8-1837:

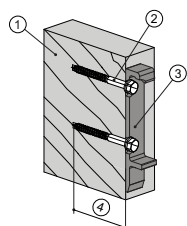
- Mill open the thermal insulation prior to injection
- Sealing of the expansion joint
- Installation of the attachment:
- Tightening torque as per Z-21.8-1837
- Sealing of the free elongated hole parts



Legend

- ① Brickwork
- ② Installation set 3; Thermax 16/170 M12
- ③ ETICS
- ④ Bracket
- ⑤ Thickness of the non-bearing layer up to 170 mm
- ⑥ Anchoring depth 200 mm = drilled hole depth

Installation on wood



Installation of the attachment:
- Drilled hole preparation $\varnothing 9$ mm
- Secure bracket with wood screw and washer

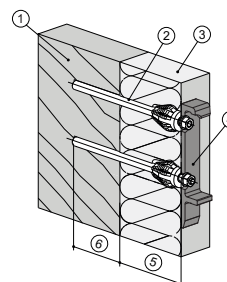
Legend

- ① Wood
- ② Installation set 5; wood screw $\varnothing 12 \times 120$
- ③ Bracket
- ④ Drilled hole depth 125 mm



No wind protection class can be given in case of installation on wood due to the variance of the building material.

Installation on wood 60-170 mm ETICS



Installation of the anchor rods:
- Drilled hole preparation $\varnothing 14$ mm
- Observe the anchoring depth and the minimum edge distance of 100 mm!

- Drilled hole cleaning
- Lubricate threaded rod
- Screw threaded rod into the wood



Installation of the Thermax following approval Z-21.8-1837:

- Milling open the thermal insulation
- Sealing of the expansion joint



Installation of the attachment:
- Sealing of the free elongated hole parts

Legend

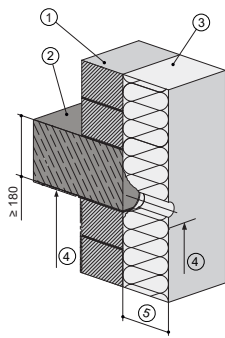
- ① Wood
- ② Installation set 3; Thermax 16/170 M12
- ③ ETICS
- ④ Bracket
- ⑤ Thickness of the non-bearing layer up to 170 mm
- ⑥ Anchoring depth 140 mm = drilled hole depth



Required wood quality is C24, P30, GL24, F40/30 or equivalent with a wood moisture of $\leq 15\%$.

Installation on concrete ceiling face, installation set

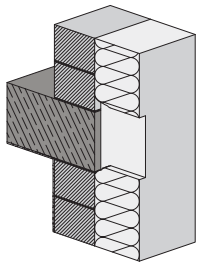
9

**Register constructional situation:**

- Thickness of the concrete ceiling
- Determination of the theoretical position of the concrete ceiling (consider differences in the ground)
- Determination of the non-bearing layer ETICS (adhesive, insulation, plaster)

Legend

- ① Brickwork
- ② Concrete ceiling
- ③ ETICS
- ④ Ceiling position
- ⑤ Thickness of the non-bearing layer

**Exclude the shape of the wooden spacer under consideration of the edge distances**

The wooden spacers should rigidly be seated in the insulation.

Using a "multi-cutter" tool is recommended for cutting out the insulation.



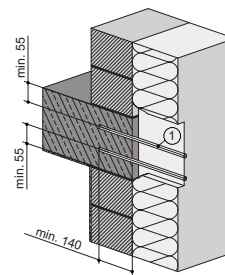
The two lower drilled holes of the bracket should be preferred for installation. The third drilled hole serves for refitting potential errors (e.g. wrong assessment of the constructional situation or position of the concrete ceiling).

Subject to technical modifications – Date of issue January/2023

31

Installation on concrete ceiling face, installation set

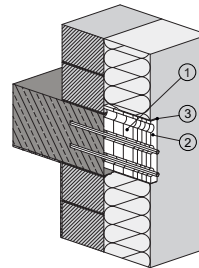
9

**Installation of the anchor rod as per approval ETA-12/0258:**

- Drilled hole preparation
- Observe the anchoring depth and the minimum edge distance!
- Drilled hole cleaning
- Fill drilled hole with mortar
- Slide the anchoring element into the drilled hole
- Wait for the curing time

Legend

- ① Anchor rod FIS A

**Insert wooden spacers and completely seal the last wooden spacer towards the ETICS outer surface.**

(Fischer multi-adhesive and sealant)
The 5 mm spacers must not be used as the last spacer. Then the anchor rods can be cut to length.

Legend

- ① Wood distances
- ② Last wooden spacer
- ③ Sealing joint all around



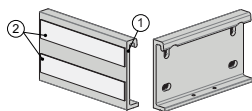
The last wooden spacer must always protrude 2-5 mm from the WDSV. A 5 mm thick wooden spacer per installation set is included as a reserve.

32

Subject to technical modifications – Date of issue January/2023

Installation on concrete ceiling face, installation set

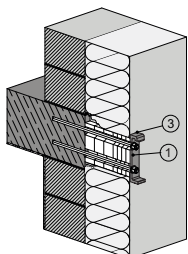
9

**Affix the bitumen band on the back of the wall bracket type I:**

Affix two strips of bitumen band on the back of the wall bracket type I: Affix them so that all holes are completely covered.

Legend

- ① Wall bracket type I
- ② Bitumen band

**Fixing of the bracket:**

Attach the wall bracket type I; while doing so, push the anchor rod through the bitumen band. Position washer and nut and tighten them. The bracket must be sealed all around again by means of a joint between ETICS surface and bracket (Fischer multi-adhesive and sealant).

Legend

- ① Wall bracket type I
- ② Bitumen band
- ③ Sealing joint all around

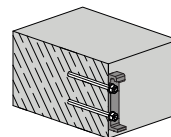


The sealing joints are maintenance joints that must be checked and maintained at regular intervals in order to prevent consequential damage.

Subject to technical modifications – Date of issue January/2023

33

Further installation situations, installation set 9

**Constructional situation pressure-resistant installation on concrete**

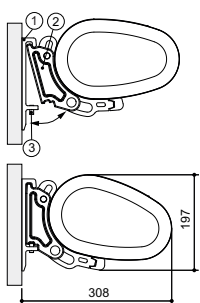
With this application, the wall bracket type I must be ordered and installed in combination with the mounting set 2.

34

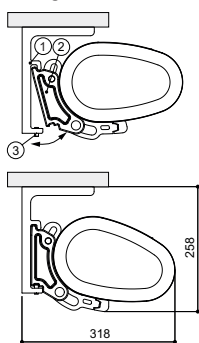
Subject to technical modifications – Date of issue January/2023

Installation of the awning

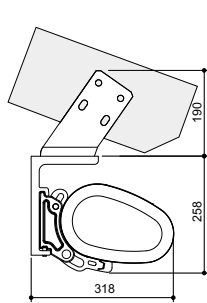
Wall installation



Ceiling installation



Rafter installation



Legend

- ① Wall / ceiling bracket
- ② Swivelling bracket
- ③ Clamping screw with screw locking device



Swivel the awning into the bracket as shown and fix by means of the clamping screws immediately.



The articulated arms are under high mechanical stress. The cover prevents a discharge of this potential energy. There is danger to life.

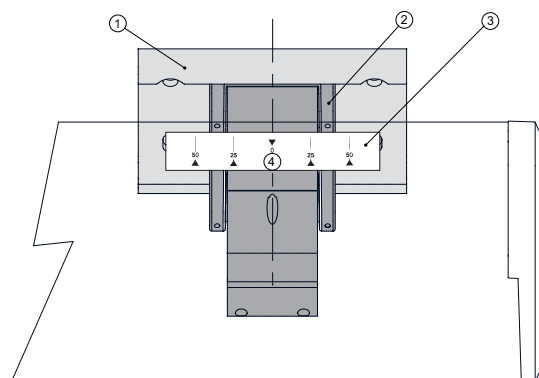
Attention!

It is not allowed to extend the awning before the clamping screw (3) has been fixed. There is a high risk of injury and danger to life!

Subject to technical modifications – Date of issue January/2023

35

Installation of the awning



Legend

- ① Wall / ceiling bracket
- ② Swivelling bracket unit
- ③ Bracket positioning stickers (Art.-Nr. 032203)
- ④ Bracket centre

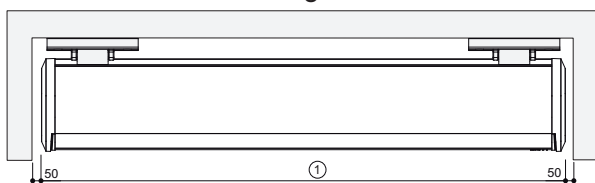


The swivelling bracket is delivered together with the arm bearing in the middle. Its position is designated by a sticker. In exceptional cases (i.e. bracket installation mistakes), the permissible deviation between the bracket position and the arm bearing position is +/-50 mm.

36

Subject to technical modifications – Date of issue January/2023

Installation of the awning



Legend

- ① Ordering width

Subject to technical modifications – Date of issue January/2023

37

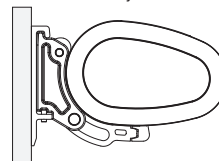
Adjusting the awning

Inclination adjustment with standard arm bearing

Maximum inclination adjustment with wall and ceiling installation from 5° to approx. 40°.

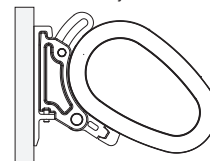
Wall installation

Inclination adjustment 5°



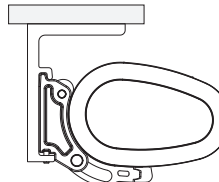
Wall installation

Inclination adjustment 40°



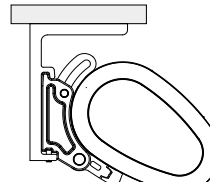
Ceiling installation

Inclination adjustment 5°



Ceiling installation

Inclination adjustment 40°



38

Subject to technical modifications – Date of issue January/2023

Adjusting the awning

Inclination adjustment with standard arm bearing

To adjust the angle of inclination, the cassette awning CLEO 7040 is equipped with an adjusting mechanism, which enables an inclination from approx. 5° to 40°. Due to the special construction of the swivelling bracket, the inclination of this awning model is adjusted by rotating the entire casing. The angle of inclination and the horizontal position of the front profile are adjusted ex works.

If a modification is required, please proceed as described in the following:



Completely extend the awning.



Put an Allen key 6 mm (5) onto the adjusting spindle (4). The casing of the awning raises or lowers by turning the key (see the figure on the following page).



The respective arm can be adjusted easier if a second person slightly lifts up the front rail (6).



Proceed analogously with the second adjusting mechanism. The awning raises or lowers side by side.



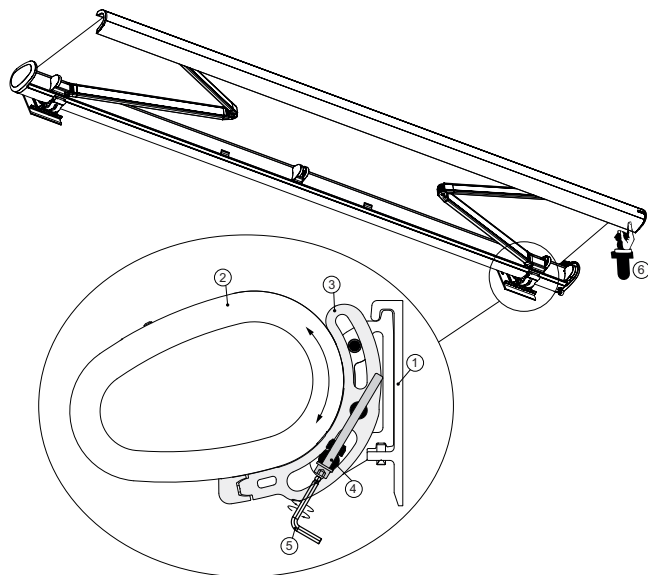
Ensure that the angle of the folding arms to one another is not more than 5° during the adjustment procedure. Thus the adjustment procedure is to be repeated several times on the left and right of the adjustment spindles until the desired inclination is reached. Never turn against greater resistance.



Check the correct adjustment on the front rail by means of a spirit level in the extended condition.

Adjusting the awning

Inclination adjustment with standard arm bearing



Legend

- | | |
|----------------------|-----------------------------|
| ① Wall bracket | ④ Adjusting spindle |
| ② Casing awning | ⑤ Allen key SW 6 |
| ③ Swivel arm bearing | ⑥ Support at the front rail |

Adjusting the awning

Arm adjustment

Ex works your awning is optimally adjusted. To ensure a correct closing of the awning, the folding arms (1) should be in a parallel position to the front rail (2). The arm bearing bolt is mounted in an eccentric bush (6). You can adjust the folding arms at any time as follows:



In order to correct the angle, you must open the clamping screw for the eccentric bush (4) by means of an Allen key 2.5 mm (5) first. In order to access the threaded pin, you must extend the awning (see illustration on the next page).



Then retract the awning to approx. 0.5 m and correct the position of the arm by turning the eccentric bush (6) by means of an Allen key 8 mm (7).



Please note: The position mark (9) of the eccentric bush must be within the indicated adjustment range (10). Otherwise the parallelism of the arm to the casing can be adjusted, however, the awning will still extend askew.



The arm should be parallel to the casing of the awning! For facilitated adjustment, the arm can be supported by hand (8).



Check the adjustment of the inclination and, if necessary, repeat the described procedure until the desired result has been reached.

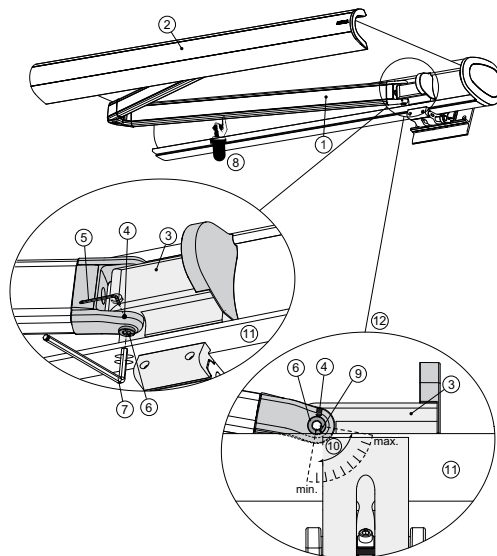
Now the adjusting procedure of the swivel arm bearing (3) regarding the arms is completed. The adjusting procedure on the right side must be performed analogously.



Please note: Finally retighten the clamping screws (4)!

Adjusting the awning

Arm adjustment

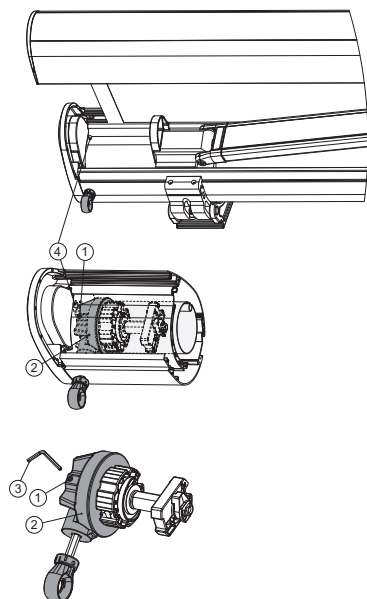


Legend

- | | |
|-------------------------------------|--|
| ① Folding arm | ⑦ Allen key A/F 8 |
| ② Front rail | ⑧ Lifting the folding arm |
| ③ Swivel arm bearing | ⑨ Position mark of the eccentric bush |
| ④ Clamping screw for eccentric bush | ⑩ Adjustment range (opposite side in mirror image) |
| ⑤ Allen key AF2.5 | ⑪ Casing - awning |
| ⑥ Eccentric bush for arm adjustment | ⑫ View from the bottom |

Adjusting the awning

Adjusting the end positions



Changing gear points with awnings with crank handle operation:

The end points of the crank handle gear can be adjusted. If the adjustment ex works is to be changed, please proceed as follows:

Extend the awning until the stop position is reached (you hear a click).



Loosen the fixing screw (1) by means of an Allen key 3 mm (3).

Move the awning to the desired position using the crank rod. Tighten the fixing screw (1).

Legend

- ① Fixing screw
- ② Gear (discreetly hidden)
- ③ Allen key A/F 8
- ④ Adjustment hole

Adjusting the awning

Adjusting the end positions

Varioplus roller blind with motor drive and remote control

The roller blind can be raised or lowered by activating a hand-held radio transmitter. The end points of the drive are set at the factory. But they can be changed by means of a hand-held radio transmitter.

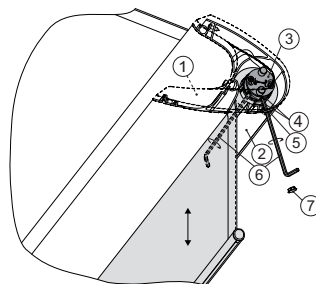
Please observe the enclosed instructions of the manufacturer of the drive, if any modification is required.

Varioplus roller blind with motor drive and switch controls or ONYX

The roller blind can be raised or lowered by activating a mechanical switch or the ONYX control. The end points of the drive are adjusted ex works, however, must be mechanically adjusted by turning the 2 adjustment screws (4) on the motor head (3) in case of changes.

The front adjustment screw is hidden behind the front rail (2) and can be reached via the boreholes (5) with an Allen key 4 mm (6). However, the plastic covering caps (7) must be removed first.

Detailed instructions for adjusting the end positions can be found in the enclosed documents of the motor manufacturer.



Legend

- ① End cap
- ② Front rail
- ③ Motor head
- ④ Adjustment screws for end positions
- ⑤ Adjustment holes
- ⑥ Allen key 4 mm
- ⑦ Plastic covering cap



If the front rail sags in the middle or does not retract completely, the setting of the upper end position must be corrected.

Electric commissioning and overview table power

This general overview table shows which awning designs are possible with an electric control.

	Possible types of operation		
	Somfy wire-bound	Somfy radio io	ONYX
Awning drive	yes	yes	yes
Varioplus roller blind	yes	yes	yes
LED lighting	no	yes	yes
Heater	no	yes	no

Electric commissioning and overview table power

Technical data of the awning

Connection for all cables: 220-240V / 50-60Hz

Overview powers [W]

	1500		2000		2500	
	Somfy wire-bound	Somfy radio io	Somfy wire-bound	Somfy radio io	Somfy wire-bound	Somfy radio io
Awning drive to 5000 5001-6000 6001-7000 with 4 folding arms Awning drive NHK to 5000 5001-6000 6001-7000 with 4 folding arms Varioplus LED 2 folding arms LED 3 folding arms	Projection [mm]					
	160	160	160	160	170	170
	160	160	160	160	170	170
	240	240	240	240	240	240
	240	240	240	240	240	240
	Width [mm]					
	-	160	-	160	-	240
	-	160	-	160	-	240
	-	240	-	240	-	240
	-	240	-	240	-	240
Awning drive to 5000 5001-6000 6001-7000 with 4 folding arms Awning drive NHK to 5000 5001-6000 6001-7000 with 4 folding arms Varioplus LED 2 folding arms LED 3 folding arms	Projection [mm]					
	170	170	170	170	240	240
	240	240	240	240	240	240
	240	240	240	240	240	240
	240	240	240	240	240	240
	Width [mm]					
	-	240	-	240	-	240
	-	240	-	240	-	240
	-	240	-	240	-	240
	-	240	-	240	-	240

Activation guidelines for electric drives



The motors we use are drives with integrated planetary gear, brakes, limit stops at the top and at the bottom, and thermo cut-off switches, also not only a motor, but a complete drive system.



In some respect, the drives do **NOT** correspond to other household electrical consumers. Please strictly observe the following notes and safety instructions.



The construction, checking, commissioning and error-correcting of the electrical system are only allowed to be carried out by an electrician (acc. to VDE 0100). In case of improper connection, considerable danger can arise for the user.



- **Follow the wiring diagram precisely!**
- We cannot accept responsibility for damage, that can result from improper installation.
- Never simultaneously activate the drives with an UPWARDS and a DOWNWARDS signal!
- **Keep a break of approx. 0.5 seconds between the UPWARDS and the DOWNWARDS command** (is often neglected with Instabus EIB-systems).



Radio interference suppression

The drives are provided with a radio interference suppression according to the current VDE standards and EC Guidelines. If the drives are operated with other devices, that include interferences, it is the fitter's duty - as part of the obligation to suppress interference - to ensure that the entire unit complies with the current regulations.



Operation in wet spaces

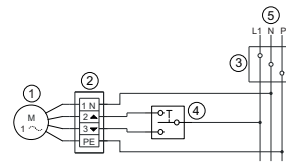
The drives are "splash-proof"; if they are operated in wet spaces, the VDE-guidelines, inter alia VDE 0100/Parts 701, 702, the guidelines of the local electric supply companies and of the TÜV must be observed and fulfilled.



Both the instructions and notes given in these instructions, as well as the instructions and notes given in the respective enclosed instructions of the manufacturers of the drive systems must be observed.

Wiring diagram for motors with switch operation

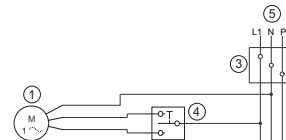
Drive system awning



Legend

- ① Drive system awning
- ② Hirschmann connector
- ③ Junction box
- ④ Switch
- ⑤ Mains

Drive system Varioplus



Legend

- ① Drive system Varioplus
- ③ Junction box
- ④ Switch
- ⑤ Mains

No PE available!

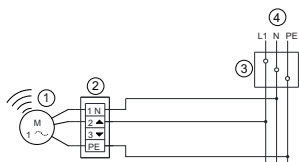


For more details concerning the electrical connections, powers, operating instructions and programming, please refer to the enclosed documents of the manufacturer or the HELLA installation instructions.

It is essential that switches for the awning drive be electrically and mechanically locked.

Wiring diagram for motors with Somfy io

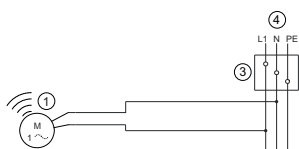
Drive system awning



Legend

- ① Radio drive awning
- ② Hirschmann connector
- ③ Junction box
- ④ Mains

Drive system Varioplus



Legend

- ① Radio drive Varioplus
- ③ Junction box
- ④ Mains

No PE available!



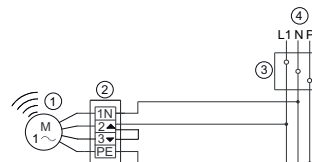
For more details concerning the electrical connections, powers, operating instructions and programming, please refer to the enclosed documents of the manufacturer or the HELLA installation instructions.



With the radio system Somfy io all receivers must be taught one after another (order does not matter), i.e. do not connect several receivers to the network at the same time as the radio system does not support a simultaneous teaching process of multiple components.

Wiring diagram for motors with elero radio

Drive system awning



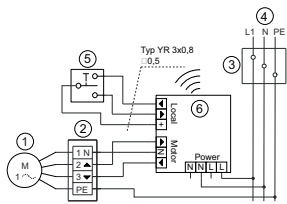
- ① Radio drive awning
- ② Hirschmann connector
- ③ Junction box
- ④ Mains



For more details concerning the electrical connections, powers, operating instructions and programming, please refer to the enclosed documents of the manufacturer or the HELLA installation instructions.

Wiring diagram for motors with ONYX.NODE

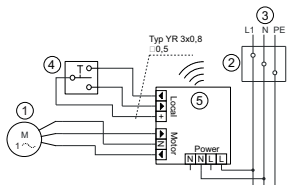
Drive system awning



Legend

- ① Drive system awning
- ② Hirschmann connector
- ③ Junction box
- ④ Mains
- ⑤ Button
- ⑥ ONYX.NODE

Drive system Varioplus



Legend

- ① Drive system Varioplus
- ② Junction box
- ③ Mains
- ④ Button
- ⑤ ONYX.NODE



For more details concerning the electrical connections, operating instructions and programming, please refer to the enclosed documents "ONYX".

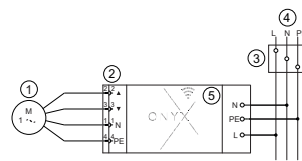
It is essential that switches for the awning drive be electrically and mechanically locked.

Subject to technical modifications – Date of issue January/2023

51

Wiring diagram for motors with ONYX.CONNECTOR

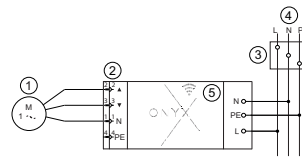
Drive system awning



Legend

- ① Drive system awning
- ② Hirschmann connector
- ③ Junction box
- ④ Mains
- ⑤ ONYX.CONNECTOR

Drive system Varioplus



Legend

- ① Drive system Varioplus
- ② Hirschmann connector
- ③ Junction box
- ④ Mains
- ⑤ ONYX.CONNECTOR



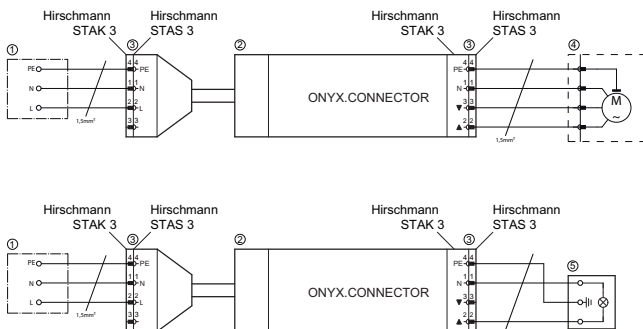
For more details concerning the electrical connections, operating instructions and programming, please refer to the enclosed documents "ONYX".

It is essential that switches for the awning drive be electrically and mechanically locked.

52

Subject to technical modifications – Date of issue January/2023

Wiring diagram for motors with ONYX.CONNECTOR



Legend

- ① Junction box
- ② Adapter plug ONYX.CONNECTOR
- ③ Hirschmann plug connection
- ④ Motor
- ⑤ Lighting

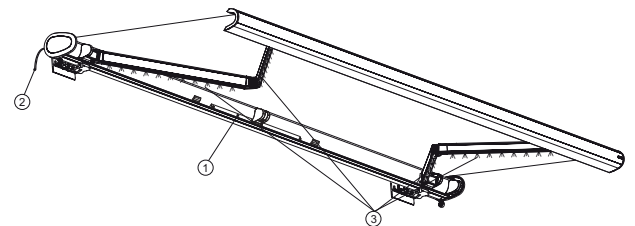


For more details concerning the electrical connections, operating instructions and programming, please refer to the enclosed documents "ONYX".

Subject to technical modifications – Date of issue January/2023

53

Overview LED lighting with remote control



Legend

- ① LED control unit*
- ② Connecting cable 230V
- ③ Integrated LED lighting

Technical data

Light temperature	2700 K (warm-white)
Colour rendering index of the LED strips	>90
Control LED	Somfy io, ONYX (dimmable)
Operating temperature (outside temperature)	-20°C to +45°C
IP rating	IP44
Cable	10 m with open end piece

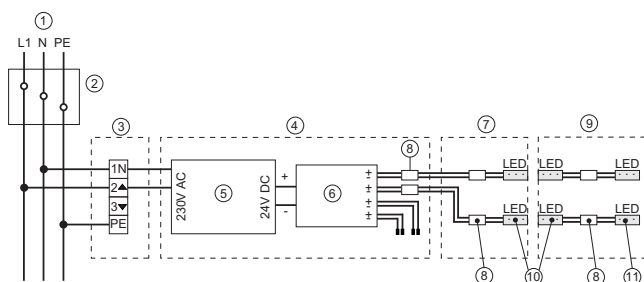
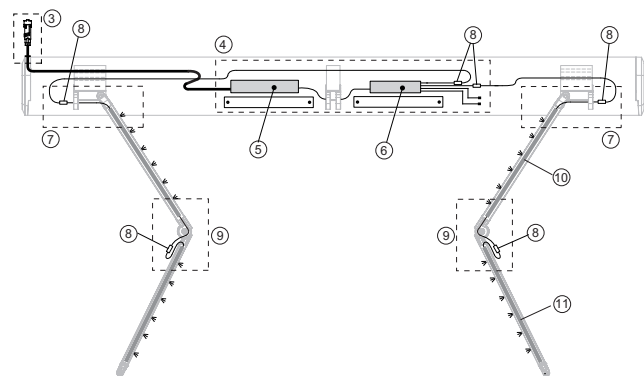
* ... The control of LED lighting is possible with Somfy io or ONYX The individual modules are described in the following.

54

Subject to technical modifications – Date of issue January/2023

Replacing a folding arm with integrated LED lighting

Schematic wiring diagram



Subject to technical modifications – Date of issue January/2023

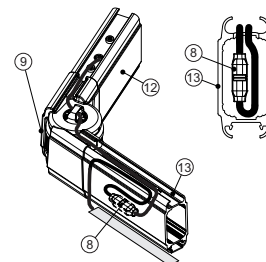
55

Replacing a folding arm with integrated LED lighting

Schematic wiring diagram

Legend

- ① Mains
- ② Junction box
- ③ Hirschmann connector
- ④ Control module (Somfy io or ONYX)
- ⑤ Power supply unit
- ⑥ LED receiver (Somfy io or ONYX)
- ⑦ Connection point at the arm bearing
- ⑧ Two-wire line connector
- ⑨ Connection point at the centre hinge
- ⑩ LED in the upper arm
- ⑪ LED in the lower arm
- ⑫ Upper arm tube
- ⑬ Lower arm tube

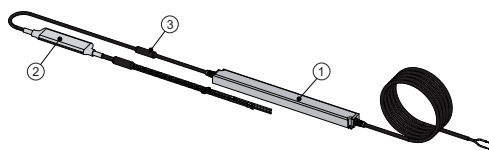


56

Subject to technical modifications – Date of issue January/2023

Replacing a folding arm with integrated LED lighting

Control of the LED lighting with the control module ONYX



The configuration, commissioning and operation of the LED lighting with the control module ONYX are described in more detail on the pages to follow.

Legend

- ① Power supply unit
- ② Control module ONYX
- ③ Connection point

Subject to technical modifications – Date of issue January/2023

57

Technical data

LED control module for awning ONYX	
Input	200 – 240 VAC / 50-60 Hz
Output	24 VDC PWM
Power consumption in the standby mode	0.5 W
Maximum power consumption (depends on the size of the awning)	90 W
IP rating	IP 55
Permitted operating temperature range	-20 °C to +55 °C
Radio frequency	868.3 MHz
Transmission power	12.6 mW
Installation type	Already ex works mounted in the LED awning from HELLA Sonnen- und Wetterschutztechnik
Channels	1

58

Subject to technical modifications – Date of issue January/2023

Configuration



Once the connection cable of the ONYX.LED is supplied with voltage, the lighting of the awning switches on briefly and then is dimmed slowly. In this way you can ascertain, if the awning lighting is connected correctly. This process is no longer performed, when ONYX.LED is already connected with a hand-held radio transmitter ONYX.CLICK or with ONYX.CENTER.



Before configuring the ONYX.LED, download HELLA's free app ONYX from the App Store/Google Play to your smart phone.



Configuration ONYX.LED with ONYX.CLICK (without ONYX.CENTER)

Before you can use ONYX.LED in combination with the hand-held radio transmitter ONYX.CLICK, ONYX.CLICK must be first connected with the ONYX app. Once the hand-held radio transmitter is connected with the app, the menu item **"Configure devices"** opens. You can now add a new awning lighting ONYX.LED with **"+"**. The camera opens. By tapping on **"A"** in the lower area of the screen, a window opens showing all available devices. The overview displays ONYX.LED as **"LED"**. ONYX.LED is connected with the hand-held radio transmitter via **"Adaption to the system"**. Then follow the instructions on the screen. The configuration is continued as described in the instructions for use for ONYX.CLICK.



Configuration of ONYX.LED with ONYX.CENTER

Before you can use ONYX.LED in combination with ONYX.CENTER, ONYX.CENTER must first be connected with the ONYX app as described in the instructions for use. Once ONYX.CENTER is set completely, the **"Configuration mode"** is activated. You find it under **"Settings"**. Under the menu item **devices** a new awning lighting ONYX.LED can now be added with **"+"**. The camera opens. By tapping on **"A"** in the lower area of the screen, a window opens showing all available devices. The overview displays ONYX.LED as **"LED"**. ONYX.LED is connected with the hand-held radio transmitter via **"Adaption to the system"**. Then follow the instructions on the screen. The configuration is continued as described in the instructions for use for ONYX.CENTER.

Subject to technical modifications – Date of issue January/2023

59

Operation

Operation via the hand-held radio transmitter ONYX.CLICK



The lighting is switched on and off with the two pushbuttons "UP" and "DOWN". If one of the two pushbuttons is pressed longer, the lighting can be dimmed. If this pushbutton is released, the current brightness of the lighting is kept. The current brightness is reset after the switching on.



Groups with different shading and light control devices can be configured freely at the hand-held radio transmitter ONYX.CLICK. All elements in one group can be controlled together.



Per group configured one brightness value can be saved at the hand-held radio transmitter ONYX.CLICK, so that it can easily be assessed again at a later time.

Operation via the ONYX app



The awning lighting switches on or off by tapping on the respective icon of the lighting. The current brightness is reset after the switching on. By swiping up or down over the respective icon of the lighting, the awning lighting is dimmed up to the maximum/minimum brightness. Whilst the awning lighting is dimmed, the desired brightness can be kept by briefly tapping.

60

Subject to technical modifications – Date of issue January/2023

Operating guidelines



Groups

In combination with ONYX.CENTER, groups with their different sun protection systems/awning lightings can be configured freely in the ONYX app. All units in one group can be controlled together.



Favourite position (heart symbol)

In the ONYX app, you can save up to six freely selectable brightness options for each ONYX.LED, which you can use again later very easily.

Ideal use of the radio signal



In case of bad reception, the position of the ONYX.CENTER/ONYX.CLICK must be changed.



Radio systems that send on the same frequency may cause interference with reception. It must be considered that the range of the radio signal is limited by statutory regulations and structural measures.

Subject to technical modifications – Date of issue January/2023

61

Fault removal

Problem	Possible cause	Troubleshooting
Lighting cannot be controlled in the ONYX app (offline).	No mains voltage at the awning	Check the mains voltage and establish it if necessary.
Poor or no radio reception.	Adverse position of the ONYX.CENTER or ONYX.CLICK	Change the position of the antenna of the ONYX.CENTER or re-position ONYX.CENTER/ONYX.CLICK

Disposal



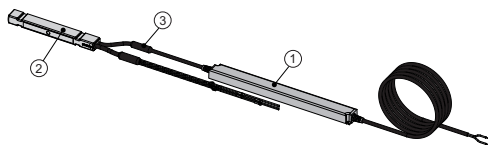
Dispose of the device in accordance with the current country-specific regulations for electronic scrap (e.g. suitable collecting points).

62

Subject to technical modifications – Date of issue January/2023

Replacing a folding arm with integrated LED lighting

Control of the LED lighting with the control module Somfy



Information about the commissioning and operation of the LED lighting are available in the instructions for use "White LED Receiver io" from Somfy.

Legend

- ① Power supply unit
- ② Control module Somfy
- ③ Connection point

Replacing a folding arm with integrated LED lighting



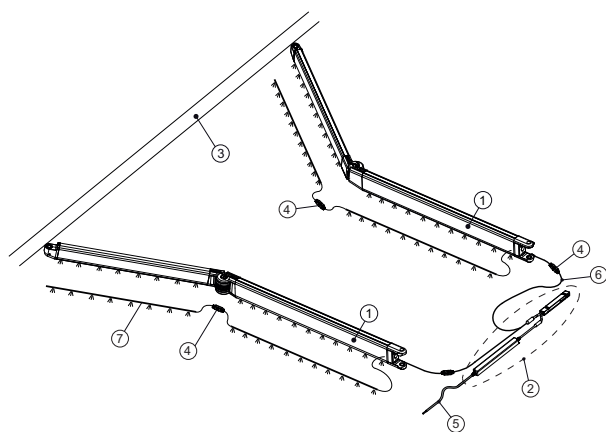
The electrical works in the low-voltage range (230 V AC) may be carried out by a qualified electrician only. This applies particularly to modification works on the supply unit (230 V AC - input side). The entire LED System in the extra-low-voltage range (24 V DC) is situated after the secondary circuit of the supply unit. However, in the event of personal adjustments, the manufacturer HELLA shall assume no liability or warranty.



During works on the LED circuit, all LED lighting must be switched off and the entire power supply to the awning should be disconnected. To this end, disconnect the power supply directly from the house! When removing the awning, the parts that are under prestress (e.g. folding arms) must be completely released from tension and protected against unintentional extending before removal.

Replacing a folding arm with integrated LED lighting

Basic structure of the LED lighting with control module for Somfy io/ONYX



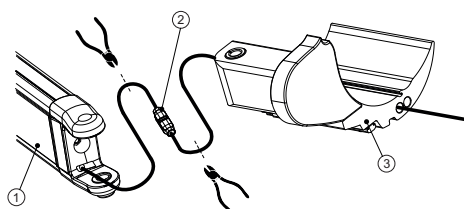
Legend

- ① LED folding arm
- ② Control module Somfy io/ONYX
- ③ Front rail
- ④ Two-wire line connector
- ⑤ Input lead 230 V
- ⑥ Wiring 24 V
- ⑦ LED strip

Replacing a folding arm with integrated LED lighting

Exchange procedure

1. Removing the defective arm and installing the new one:
 - Extend the awning for approx. 500 mm
 - Secure the folding arms so that they can not fold out on their own because of their internal spring mechanism. **Attention: There is danger to life!**
 - Disconnect the awning from the mains. For this purpose, switch dead the power supply for the whole house.
 - Pull the 24 V power supply line (placed between folding arm and arm bearing) out of the awning cassette until the two-cord line connector is within reach.
 - Cut the line directly before and after the two-cord line connector.
 - Remove the folding arm from the front rail.
 - Drive out the joint bolt in the bearing from the bottom up. Slightly support the folding arm when doing so.
 - Now mount the new folding arm.



Legend

- ① Folding arm
- ② Two-wire line connector (Art. no.: 05510012)
- ③ Arm bearing

Replacing a folding arm with integrated LED lighting

Exchange procedure

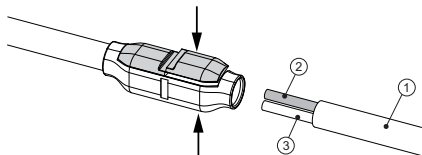
2. Provide the electrical connection (24 V) between folding arm and LED control unit again.

After the installation of the new folding arm, the previously disconnected 24 V power supply line between the folding arm and the LED control unit must be reconnected in a watertight manner by means of a two-wire line connector (art. no. 05510012).

For this purpose push both wires in one side of the two-wire line connector and connect the connector with the help of water pump pliers on one side. Stripping of the wires is not required.

Connecting the wires in the two-cord line connector:

- **Red on Brown (positive terminal)**
- **Black on Blue (negative terminal)**



Afterwards repeat this procedure for the 2nd side of the two-cord line connector.



Note:

Make sure, that both wires are shortened equally and flushly, are placed correctly in the terminal and apply electrical contact.

Subject to technical modifications – Date of issue January/2023

67

Commissioning/functional check



Extend and retract the unit in and out completely. When extending the unit for the first time, make sure no one is in the operating radius or standing below the unit.



Make sure that during the later operation the units can be extended freely and without blockings. Do not extend the unit, if objects or persons are in the operating radius of the sun protection unit. Please observe the safety instructions.

After the first extending check the mounting material and the construction elements for strength. Automatic control devices or switches, that are not in the operator's field of vision, may not be used for test runs of motor driven units.



We recommend the use of a test cable for the provisional operation of the motor.



Check all settings.
Check all screwed connections for tightness.



The awning is a sun protection device that is only allowed to be used for the intended use. Wrong use can put the user in danger. Additional loadings such as objects that are dangled to the awning or cable tensionings can damage the awning or lead to its crashing, and are therefore not allowed.



Clean the elements (see maintenance instructions).



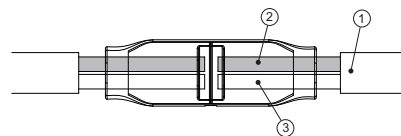
Pass these instructions as well as possible instructions of the motor, switch and control manufacturer on to the user. Brief the user, whereupon you provide comprehensive information on the safety and user instructions of the system. Have the correct design of the system as well as the installation and briefing with the safety information confirmed in writing (see handover report).

Subject to technical modifications – Date of issue January/2023

69

Replacing a folding arm with integrated LED lighting

Exchange procedure



Stow the cable and the two-cord line connector in a loop-like manner in the awning cassette. Stow the cable in the cassette and the arm bearing in such a way, that the connection point does not get bent when retracting or extending the awning and does not move.

Legend

- ① Cable (coating stripped)
- ② Wire negative terminal (not stripped)
- ③ Wire positive terminal (not stripped)

68

Subject to technical modifications – Date of issue January/2023

Adjustment - Somfy Eolis 3D radio-controlled wind sensor



The wind sensitivity of the optional Somfy Eolis 3D radio-controlled wind sensor is pre-set to level 2 ex works. This level offers good functionality with our products in most cases.



There is no systematic correlation between the set level of this sensor and the tested wind protection class of the product! The level setting may be adjusted if the product retracts considerably very early and thus restricts functionality.



Increase to level 3 at the most to avoid overload. For small systems up to 2.5m sloping projection maximum at level 4.



If the battery charge is too low, the awning signals pending battery change by retracting automatically. You will find detailed information related to battery change in the enclosed instructions of the manufacturer.

Adjustment - elero Protero 868 radio-controlled wind sensor



The wind sensitivity of the optional elero Protero 868 radio-controlled wind sensor is pre-set to level 6 ex works. This level offers good functionality with our products in most cases.



The inclination sensitivity of the optional elero Protero 868 radio-controlled wind sensor is deactivated to level 0 ex works. You will find detailed information for adjusting the inclination sensitivity in the enclosed instructions of the manufacturer.



There is no systematic correlation between the set level of this sensor and the tested wind protection class of the product! The level setting may be adjusted if the product retracts considerably very early and thus restricts functionality.



Increase to level 7 at the most to avoid overload. For small systems up to 2.5m sloping projection maximum at level 8.



If the battery charge is too low, the awning signals pending battery change by double interruption while extending the awning. You will find detailed information related to battery change in the enclosed instructions of the manufacturer.

70

Subject to technical modifications – Date of issue January/2023

Removal and Disposal



With removal or disposing of the awing, the parts that are under prestress (e.g. articulated arms, counter draw systems) must be completely released from tension and protected against unintentional drawing-out before removal.

For this, please contact a specialist enterprise.

Handing over report (for the fitter)

Dear Customer,

We are glad that you have opted for a HELLA brand product. Our units are fabricated with greatest care and many years of experience.

Your product
Cassette awning CLEO 7040
was manufactured in accordance with EN 13561:2004+A1:2008
and was installed professionally and handed over

on the

Sloping projection

Width

The instructions for use and the installation instructions have been handed over and must be read before using the product.

An introduction has taken place.

The safety instructions were pointed out.

Dealer		Customer	
Name		First name	
Street		House number	
Postal code		Place	
Date		Signature	
Name	Date	Postal code	Place
Place	Signature	Date	Signature

Handing over report (for the user)

Dear Customer,

We are glad that you have opted for a HELLA brand product. Our units are fabricated with greatest care and many years of experience.

Your product
Cassette awning CLEO 7040
was manufactured in accordance with EN 13561:2004+A1:2008
and was installed professionally and handed over

on the

Sloping projection

Width

The instructions for use and the installation instructions have been handed over and must be read before using the product.

An introduction has taken place.

The safety instructions were pointed out.

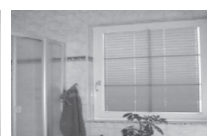
Dealer		Customer	
Name		First name	
Street		House number	
Postal code		Place	
Date		Signature	
Name	Date	Postal code	Place
Place	Signature	Date	Signature



HELLA Interior Venetian Blinds
regulate the lighting in a room very comfortably, immediately gracing it with much more atmosphere.



HELLA Insect screens
and you decide who is allowed to come in and who isn't.



HELLA Pleated Blind
folds up very compactly and protects very well against the sun and nosey glances where only little space is available.



HELLA Outdoor Blinds
serve for the light regulation, as view protection, anti-glare blind and heat protection.



HELLA Front-mounted Roller Shutter
for more safety and protection against rain, wind, heat, the cold, noise, incident light and nosey glances, also available for subsequent installation.



HELLA Vertical awning
With toggle catch mechanism for a lovely façade design with perfect heat and glare protection.

For questions, wishes and ideas:
HELLA Infoline +43/(0)4846/6555-0

HELLA Sonnen- und Wetterschutztechnik GmbH

A-9913 Abfaltersbach, No. 125

Phone: +43/(0)4846/6555-0

Fax: +43/(0)4846/6555-134

e-mail: office@hella.info

Internet: http://www.hella.info