



©2023 Lennox Industries Inc.
Dallas, Texas, USA



WARNING

Improper installation, adjustment, alteration, service or maintenance can cause property damage, personal injury or loss of life.

Installation and service must be performed by a licensed professional HVAC installer (or equivalent) or a service agency.

**THIS MANUAL MUST BE LEFT WITH THE
OWNER FOR FUTURE REFERENCE**

INSTALLATION AND USER INFORMATION GUIDE

M0STAT120L-1 Indoor Wired Non-Programmable Controller

CONTROLS
508331-01 6/2023

Table of Contents

General.....	2
Requirements	2
Shipping and Packing List	2
Product Overview	3
Product Dimensions	3
Back Plate Removal	3
Installing Back Plate on Drywall	4
Making Connections	4
<i>Wiring Diagram</i>	4
<i>Cable Connection Illustration</i>	4
Reattached the Top Panel	5
User Information	5
Display Indicators	7

CAUTION

As with any mechanical equipment, contact with sharp sheet metal edges can result in personal injury. Take care while handling this equipment and wear gloves and protective clothing.

IMPORTANT

Frequent changes to operating mode may cause system malfunctions. Allow at least one minute between mode changes to allow the system to stabilize.

General

The M0STAT120L-1 is a wired non-programmable local controller for mini-split indoor units with convenient timed schedules for daily operation.

These instructions are intended as a general guide and do not supersede local codes in any way. Consult authorities having jurisdiction before installation.

Requirements

Be sure that power supply to the indoor unit has been disconnected before beginning installation.

This controller should be used only as described in this manual.

Do not install the controller on outside walls (where there is unconditioned space on opposite side of wall) or in locations where direct sunlight may be present.

Shipping and Packing List

Package 1 of 1 contains the following:

Item	Qty
Wired Controller	1
Installation and User Information Guide	1
Screws for securing back plate to drywall (M4X20)	3
Drywall anchors for securing back plate	3
5-pin cable assembly	1
5-pin extension cable assembly - 20 Feet (6 meters)	1
Ground screw with washer (M4x8)	1

Product Overview

- **Built-In Memory** - Maintains clock, fan speed and mode of operation settings following power outages.
- **Dimensions** - (H x W x D) - 4-3/4 x 4-3/4 x 7/8 inches (83 x 83 x 22 mm).
- **LCD Display** - 3-1/2 inch (89 mm) backlit.
- **Wiring Requirements** - Controller uses 5-wire shielded 20 foot (6 meters) extension cable (furnished) for easy low voltage connection to the indoor unit.
- **Cable Length** - Total overall cable length not to exceed 59 feet (18 meters).

Product Dimensions

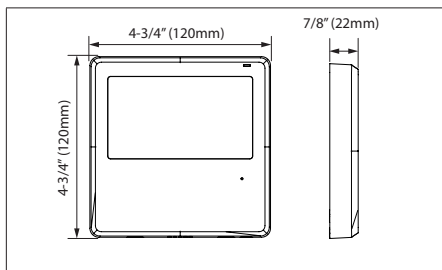


Figure 1. Product Dimensions

Back Plate Removal

1. Insert a flat-head screwdriver into the slot located in the lower section of the back plate.
2. Rotate the screwdriver to remove the back plate.



IMPORTANT

The printed circuit board (PCB) is located in the upper section of the remote control. Be careful not to damage the PCB with the screwdriver.

3. Remove the back plate.

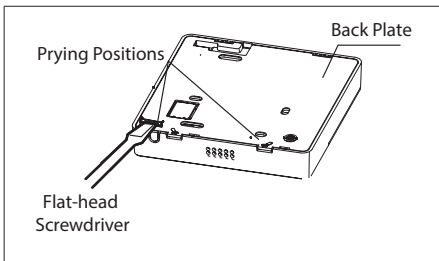


Figure 2. Back Plate Removal

Installing Back Plate on Drywall

When installing the back plate to a flat drywall surface, use the provided screws for securing back plate to drywall (M4x20). Also use provided wall anchors if required.

! IMPORTANT

Always install back plate on flat surface. Do not distort back plate by over-tightening the mounting screws.

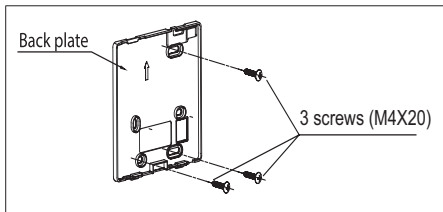


Figure 3. Securing Back Plate to Drywall

Making Connections

Wiring Diagram

Refer to the following illustrations on connecting the provided cables to the wired controller and indoor unit.

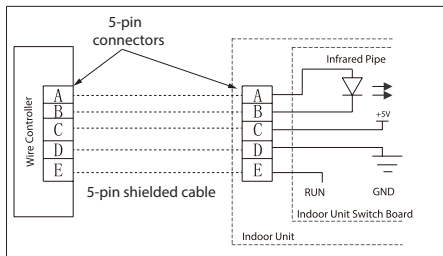


Figure 4. Wiring Diagram

Cable Connection Illustration

1. Connect the 5-pin shielded cable assembly to connection to the wired controller.
2. Connect the 5-pin shielded cable assembly to the 5-pin shielded extension cable.
3. Connect the 5-pin shielded extension cable to the indoor unit display cable connection.

NOTE: Use the provided M4x8 screw with washer to secure the ground connector.

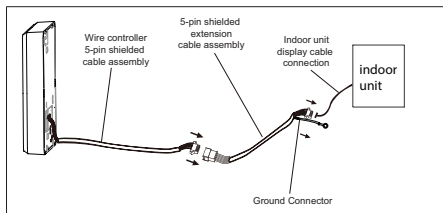


Figure 5. Cable Assembly Connections

Reattached the Top Panel

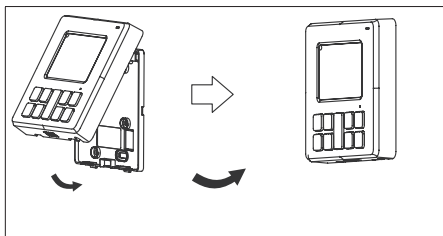
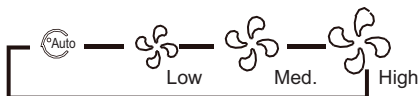


Figure 6. Reattaching Top Panel

User Information

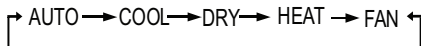
1. FAN SPEED Button

Selects fan speed. Each button press cycles through the following settings on display.



2. MODE Button

Select system operation modes. Push button to cycle through each setting.



3. FUNCTION Button

Scrolls through unit operations in this order:

- Turbo
- Sleep
- Active Clean
- Follow Me

4. SWING Button

- a. **Up-Down Swing** - Press the **Swing** button to start up and down swing.
- b. **Left-Right Swing** - Press the **Swing** button for two seconds to start left and right swing. Press it again for two seconds to stop the swing.
- c. Can also set the desired air direction of the louver.

5. TIMER Button

- a. **TIMER ON** (initiates an auto-on time sequence).
- b. **TIMER OFF** (initiates an auto-off time sequence) can be used separately or together.
- c. Each press of the button increases the time in 30 minute increments up to 10 hours.
- d. Above 10 hours each press of the button will increase the auto-timed setting by 60 minutes up to 24 hours.

6. POWER Button

Turns system on and off.

7. CONFIRM Button

Confirms selected function.

8. BACK Button

Returns to the previous step.

9. UP/DOWN Buttons

- a. Increase or decrease the indoor temperature in two degree increments with a maximum 86°F (30°C) and minimum 60°F (16°C).

NOTE: *Temperature cannot be adjusted in FAN mode.'*

- b. Fahrenheit and Celsius Setting - Hold the button **UP** or **DOWN** for three seconds to alternate the temperature display between the °F and °C scale.

10. Lock Button

Press the **Function** and **Swing** buttons simultaneously for three seconds to lock the controller to prevent tampering with settings. To unlock the controller press both buttons again for three seconds.

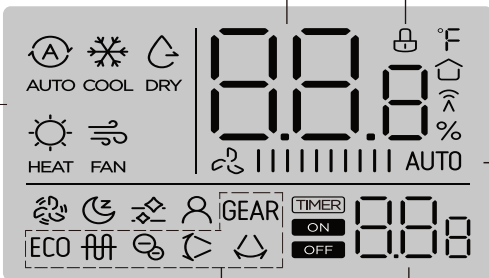
Display Indicators

MODE display
Displays the current mode:

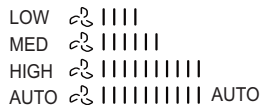


Temperature display

Lock display



FAN SPEED display
Displays selected fan speed:



(certain models) Timer/ ON/Off display

°F °F / °C display

Room temperature display

Follow me feature display

Not used

Turbo feature display

Active clean display

SLEEP feature display

UP and down swing
(certain models)

GEAR GEAR feature display (certain models)

ECO ECO feature display
(on certain models)

Electric heating display (certain models)

Left and right swing (certain models)

NOTE:

All icons are shown for display purposes only.
During actual unit operation, only active icons are displayed.

