

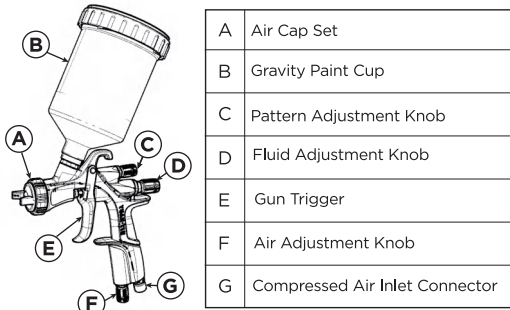
INOKRAFT
DRIZZLE D1
LVLP AIR SPRAY GUN

Quick Start-Up Guide



This guide is for quickly starting spray painting projects. For detailed product and safety information, please refer to the user manual.
READ ALL INSTRUCTIONS BEFORE OPERATING.

KNOW YOUR SPRAY GUN



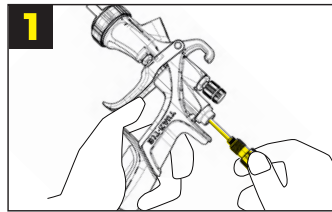
NOZZLE SIZE RECOMMENDATION

Please refer to Paint Manufacturer's recommendations.

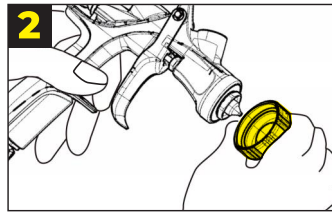
	1.2	1.3	1.4	1.5	1.6	1.7	1.8	1.9	2.0	2.5
Sealant										
Primer										
Intermediate Coat										
Clear Coat										
Base Coat										
Latex Paint										
Premium Paint										

NOZZLE SET REPLACEMENT

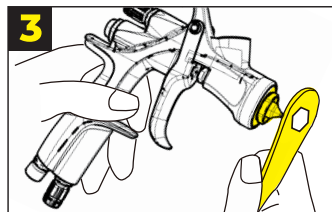
1. Disassembly of nozzle set



Turn the Fluid Adjustment Knob(D) counterclockwise to remove Fluid Needle and Needle Spring.



Remove the Air Cap Set(A).



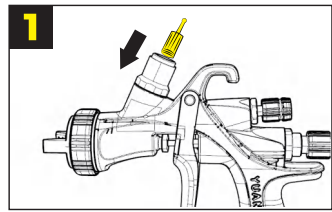
Unscrew the Fluid Nozzle with Adjustment Wrench.

2. Reverse for assembly and remember to tighten the Fluid Nozzle to prevent fluid leak.

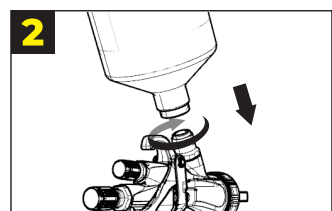
NOTE:

Replace the whole set of Air Cap, Nozzle, Fluid Needle at the same time.

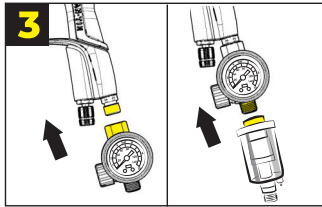
ASSEMBLY



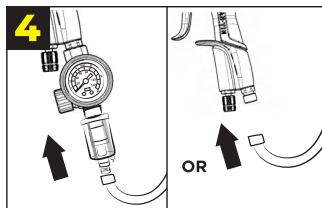
Install the Filter.



Screw the Paint Cup(B) clockwise.
NOTE: If you are using other paint cups, please choose a compatible adapter. The paint cup inlet thread size is M16X1.5.(An adapter for 3M PPS Series 2.0 is included.)

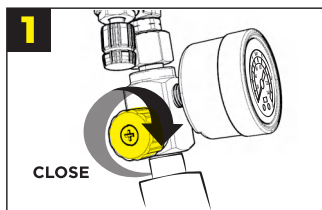


Optional
Connect the Air Pressure Regulator to the Inlet Connector(G) and then Oil-Water Separator.

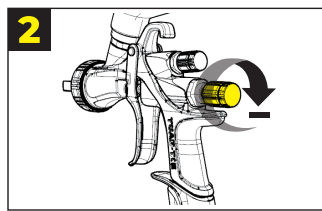


Use a 1/4" air hose to connect with the Oil-Water Separator or connect directly to the Inlet Connector(G).

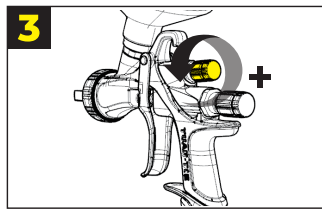
START UP



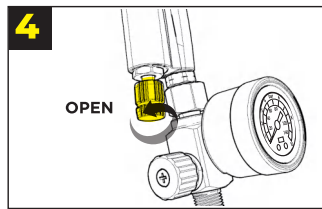
Turn the Air Pressure Regulator Knob clockwise to make sure the air inlet is closed.



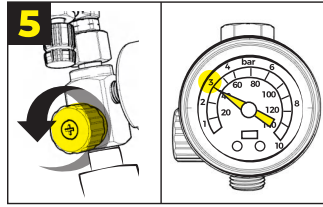
Turn the Fluid Adjustment Knob(D) clockwise to the minimum to prevent the needle from moving.



Turn the Pattern Adjustment Knob(C) counterclockwise to fully open the fan.

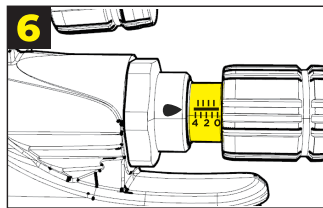


Turn the Air Adjustment Knob(F) counterclockwise to fully open it.

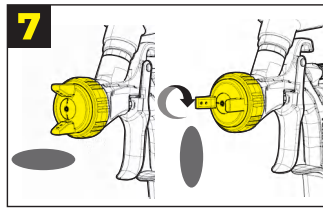


Hold the Gun Trigger(E). Then turn the Air Pressure Regulator Knob counterclockwise to raise the air pressure up to 3.0bar.

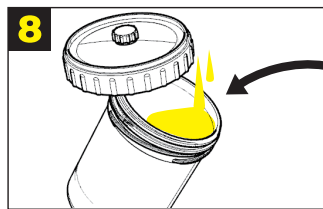
WARNING:
MAX 3.5bar,50psi.



Turn the Fluid Adjustment Knob(D) to gauge #2.



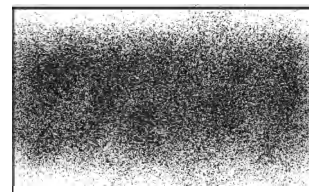
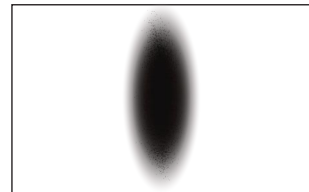
Change the spray pattern at vertical or horizontal by rotating the Air Cap at 90°.



Mix coating material by Manufacturers' instructions and pour into the Paint Cup.

TEST SPRAY

1. Test the static and dynamic spraying effect on the test paper.



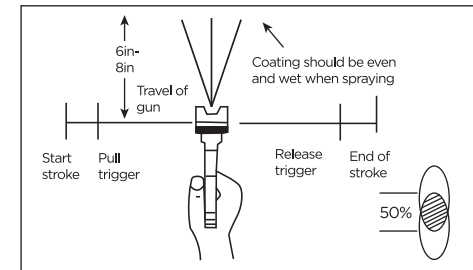
2. Adjust knobs to get the right coating result and pattern.

- If the finish is too dry, turn the Air Adjustment Knob(F) clockwise to reduce the inlet air pressure.
- If the finish is too wet, turn the Fluid Adjustment Knob(D) clockwise to reduce the fluid flow.
- If the atomized particles are too coarse, turn the Air Adjustment Knob(F) counterclockwise to increase the inlet air pressure.
- If the atomized particles are too fine, turn the Air Adjustment Knob(F) clockwise to reduce the inlet air pressure.
- If the spray pattern is too large, turn the Pattern Adjustment Knob(C) clockwise to reduce the size.

NOTE: Refer to the User Manual for more information.

3. Record relevant data on the test card for next use (optional).

SPRAY



- Maintain a distance of 6-8 inch between the spray gun and the object surface. Keep the spray gun perpendicular to the surface during movement. Bending or tilting the spray gun will cause uneven spraying.
- Slightly press the trigger to start stroke, then press hard, to get a smooth gun activation and save paint. (Practice makes perfect!)
- To stop spraying, slightly release the trigger to end stroke, then release the trigger completely.
- The speed of moving the spray gun is recommended to be about 12-15 inch per second.
- When spraying large areas, it is recommended to use a reciprocating method. The overlap area of the spray width is about 50%.
- After using the spray gun, be sure to turn off the air source. Then hold the trigger to release the air pressure.

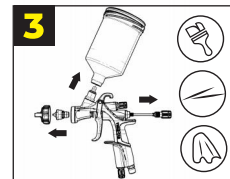
CLEAN UP



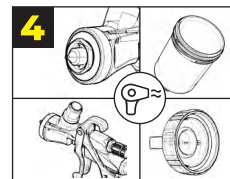
1. Recycle the remaining paint into the paint container.



2. Pour in neutral cleaning solution (pH 6 to 8), shake lightly and spray it out. Repeat multiple times until the mist coming out is clean.
NOTE: Do not immerse the spray gun completely in any solvent or cleaning solution, as this will damage the spray gun lubricant and shorten its lifespan.



- Disconnect the air hose, disassemble the Paint Cup(B), Air Cap Set(A) and Fluid Adjustment Knob(D). Use cleaning kit and accessories to completely clean the gun.
 - Clean the air cap, nozzle and fluid needle by brushing the outer surface.
 - Clean the air cap hole with a toothpick. (if necessary)
NOTE: If using metal wire or hard tools, be careful not to scratch the air cap hole to become fuzzy, resulting in deformation of the spray pattern.
 - Clean the Paint Cup and Gun Body by wiping the surface with a damp cloth.



4. After cleaning, reconnect to the air hose, turn up inlet air pressure and hold the Gun Trigger(E) to dry the inside of the spray gun.

Please refer to the User Manual for detailed instructions on how to use and maintain the LVLP spray gun.

Questions?

Don't hesitate to drop a message at support@inokraft.com!

Join InoKraft Community for

- INSTRUCTION VIDEOS
- FREE ACCESSORIES
- FREE TRIALS OF NEW PRODUCTS
- EXTENDED WARRANTY

by sending "I'm a craftsman" and your **purchase order ID** to support@inokraft.com or Scan:

Official Youtube
www.youtube.com/@inokraft

