

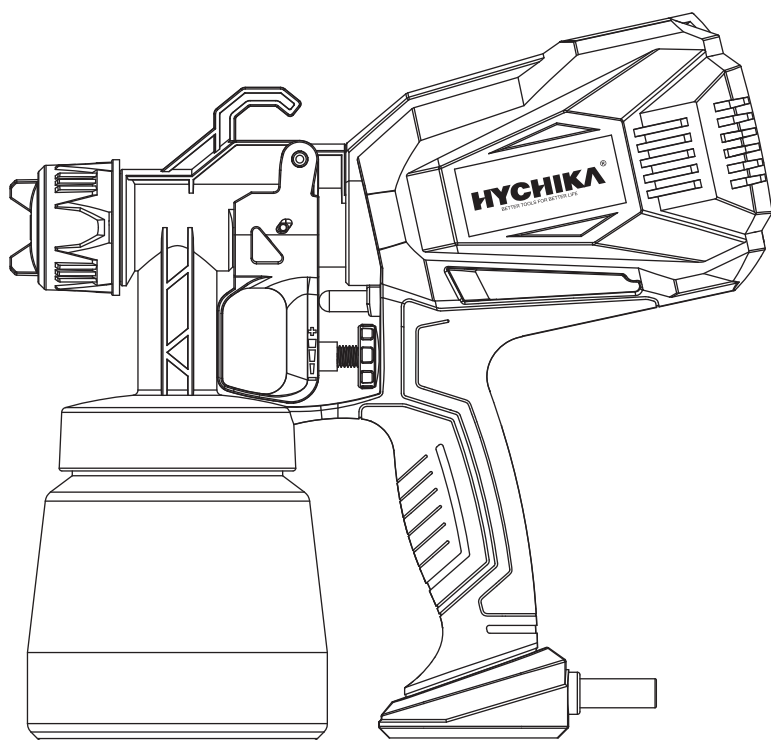
HYCHIKA[®]

BETTER TOOLS FOR BETTER LIFE

Instruction Manual

Paint Sprayer

BB729



-Better Tools for Better Life-

2. Technical parameters :

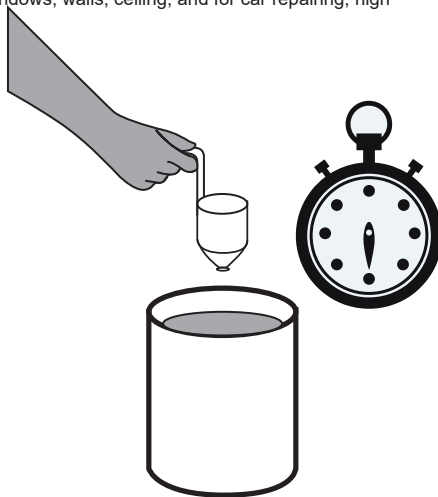
Model:BB729	
Rated power: 4.6A	Spray distance: 8-10 inch
Rated voltage:120V	Width: 8-12 inch
Frequency: 60Hz	Max viscosity: 80DIN-s
Rated speed: 32000RPM	Tank capacity:800ml
Wire length:3m	

3. Function

Suitable for painting furniture, fences, doors, windows, walls, ceiling, and for car repairing, high altitude operation and, and so on.

4. How to use

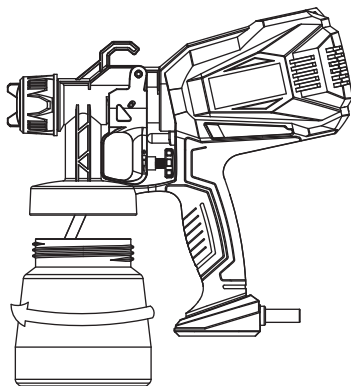
Before use the electric spray gun, material preparation is the first stage. Please refer to the thinning chart and picture.



DIN-S: The time for the liquid to run out of a funnel.

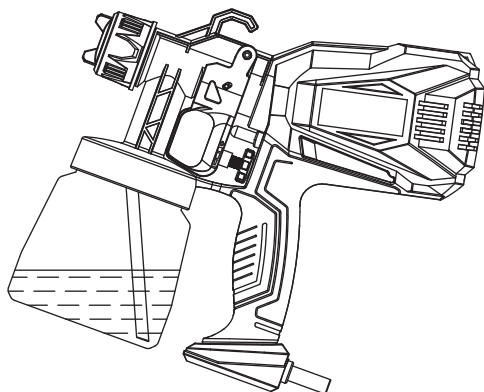
Material	Viscosity(DIN-S)
Oil enamel	25-60s
Oil based primer	30-60s
Oil stain	No thinning required
Clear sealer	No thinning required
Polyurethane	No thinning required
Lacquer	25-30s
Varnish	25-30s
Automotive finishes	20-40s
Latex	45-90s

- 1) **Unscrew the paint container from the spray gun.**

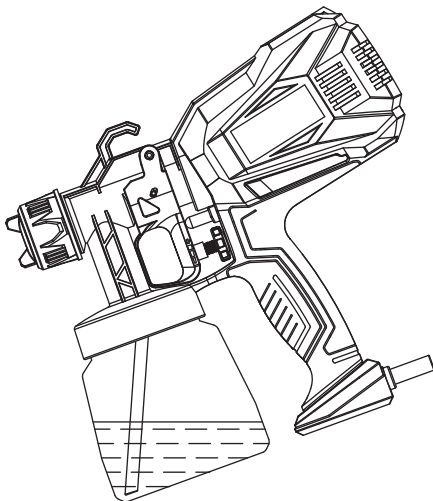


- 2) **Adjust the suction tube**

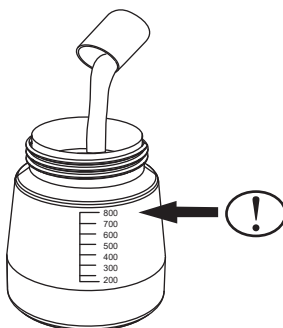
- a) If spraying upward, the inclined end of the straw should point to the back of the gun.



- b) If spraying downward, the inclined end of the straw should point to the front of the gun.

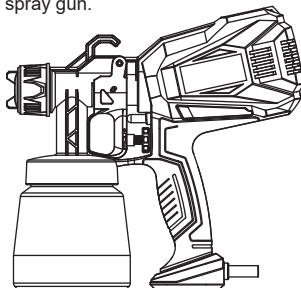


- 3) Pour material into container, make sure not to exceed 800ml.



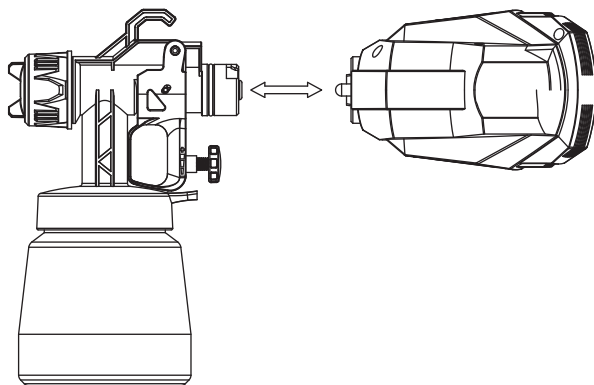
4) **Remove the motor**

- a) Hold the spray gun with your hand.
b) At the same time, hold the motor handle by hand and rotate it 90 ° counterclockwise.
c) Pull out to remove the motor from the spray gun.



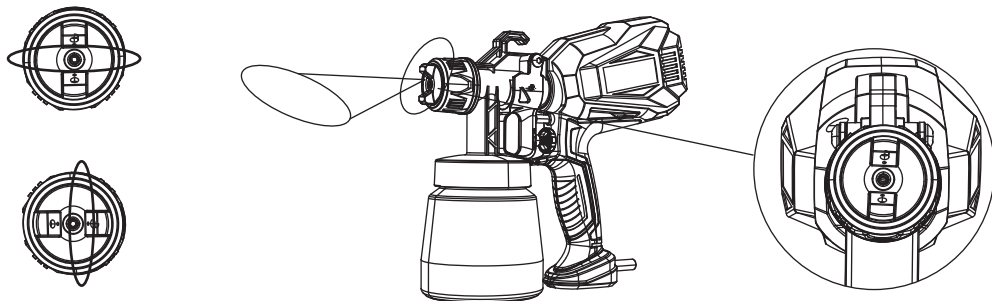
5) Connect the spray gun body to the motor

- a) Hold the spray gun by hand, align the slot on the spray gun with the slot on the motor, and then insert it (as shown in the figure).
- b) Hold the motor handle by hand and rotate the right hand 90 ° clockwise.
- c) When the gun is parallel to the main engine, it is locked.



6) Adjust the needle adjusting screw to meet your requirement.

- a) Adjust the screw to left to decrease paint volume, lower paint thickness
- b) Adjust the screw to right to increase paint volume, increase paint thickness

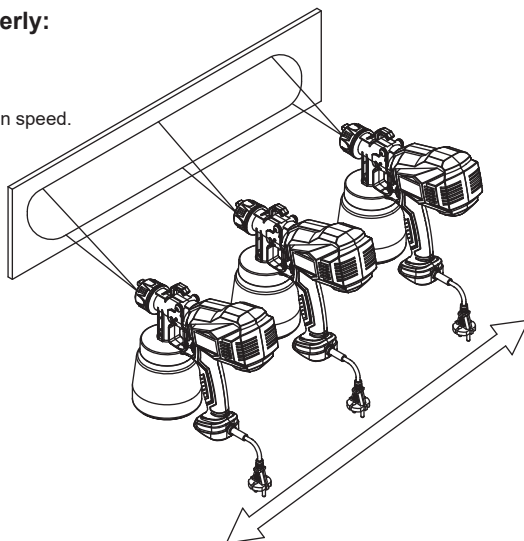


7) Turn on the power switch and press the trigger to spray paint.

5. How To Spray Properly: EVEN COAT THROUGHOUT

Correct:

Keep stroke smooth and at even speed.



Incorrect:

Do not flex wrist while spraying.

