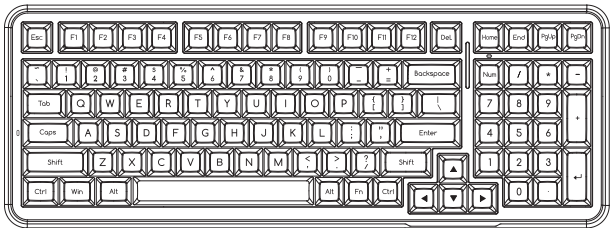
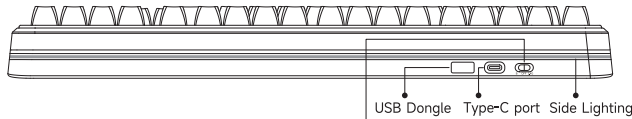


MCHOSE

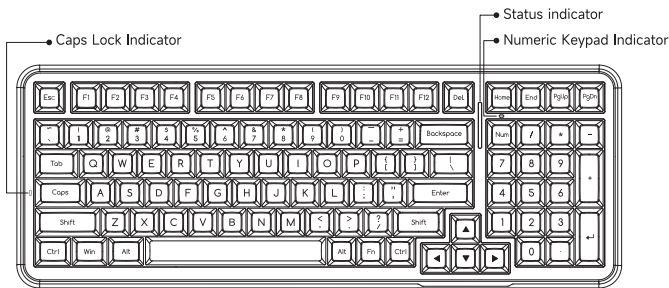


— K99 V2 User Manual —  
TRI MODE MECHANICAL KEYBOARD

Tip: Please fully charge the keyboard before using it.

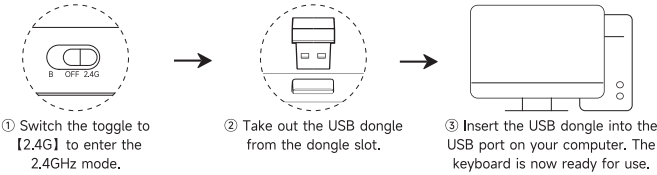


Mode switch:  
1. The left position [B] indicates wireless mode.  
2. The middle position [OFF] indicates wired mode.  
3. The right position [2.4G] indicates 2.4GHz mode.



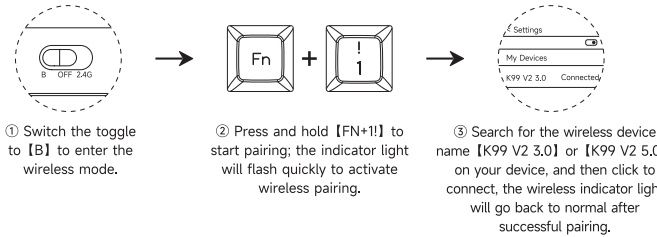
Warm Reminder: The product images shown are for illustrative purposes only; the actual product shall prevail.

• 2.4GHZ WIRELESS CONNECTION



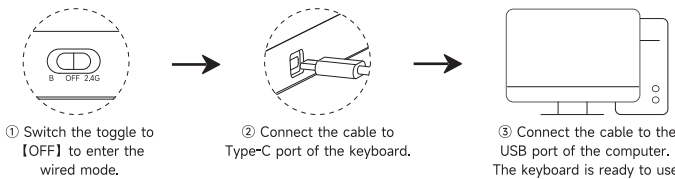
Manual pairing dongle (The dongle is default paired): Press [FN+-] and hold for 3 seconds. The indicator will quickly flash to activate the pairing mode. Plug the included dongle into the desired device. [Indicator light] will go back to normal after the 2.4GHz wireless mode connects successfully.

• WIRELESS CONNECTION



· Press [FN+1!] , [FN+2@] or [FN+3#] to switch between devices.

• WIRED CONNECTION



• FN KEY COMBINATION FUNCTIONS

Esc	Long press for 3s to restore default settings	←	Backlight speed-
Del	Switch light mode	→	Backlight speed +
End	Switch side light mode	↵	Switch backlight color
↓	Switch side light color	Right Shift	Switch on/off the backlight
[Fn] + { [	Side light brightness-	+ =	Switch status indicator color
] ]	Side light brightness+	2	Status indicator brightness-
: ;	Side light speed-	8	Status indicator brightness+
* ' ,	Side light speed+	6	Status indicator speed+
↑	Backlight brightness+	4	Status indicator speed-
↓	Backlight brightness-	Home	Switch status indicator light effect

• WINDOWS SYSTEM F-ZONE SINGLE PRESS FUNCTION AND FN COMBINATION FUNCTION

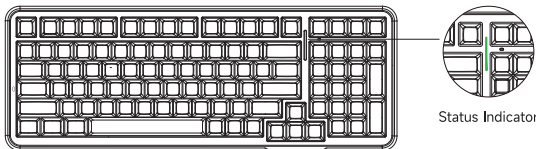
Key	F1	F2	F3	F4	F5	F6
Press the single key	F1	F2	F3	F4	F5	F6
Press with FN combination key	Screen brightness -	Screen brightness +	Switch window	Open the Explorer	N/A	N/A
Key	F7	F8	F9	F10	F11	F12
Press the single key	F7	F8	F9	F10	F11	F12
Press with FN combination key	Previous song	Play / Pause	Next song	Mute	Volume-	Volume+

• MAC SYSTEM F-ZONE SINGLE PRESS FUNCTION AND FN COMBINATION FUNCTION

Key	F1	F2	F3	F4	F5	F6
Press the single key	Screen brightness -	Screen brightness +	Switch window	Return to Desktop	Siri Search (Long press for Siri)	Screenshot
Press with FN combination key	F1	F2	F3	F4	F5	F6
Key	F7	F8	F9	F10	F11	F12
Press the single key	Previous song	Play / Pause	Next song	Mute	Volume-	Volume+
Press with FN combination key	F7	F8	F9	F10	F11	F12

1. Indicator Lights:  
Caps Lock Indicator: The CAPS lock light stays on indicating that the keyboard is locked in uppercase mode.  
WIN Key Indicator: This indicator light stays on indicating the lock status of the WIN key, at which time the WIN key disables its function.  
2. Win/Mac Systems:  
FN+A=Windows system; FN+S=Mac system. The ALT key functions as the Command key, and FN+F1-F12 corresponds to the regular F1-F12 input. In the Windows system, switching to the Mac system will swap the Win key and the left Alt key, with F1-F12 functioning as multimedia keys. When switched to Mac System from Windows, the functions of the WIN key and Left ALT key are interchanged.

• BATTERY MANAGEMENT



1. BATTERY STATUS

In wireless mode (2.4G / wireless) with the device connected, the [Status Indicator Light] will switch to a steady mode, and the keyboard will display battery levels:

● Low Battery    ● Medium Battery    ● High Battery

2. CHARGING METHOD

· In any mode, connect the keyboard to a computer with the provided cable to charge it.  
· During charging, the [Charging Indicator Light] will show a flowing light effect. Once fully charged, the [Status Indicator Light] will return to its normal effect. The charging effect is only displayed when the [Status Indicator Light] is in steady mode.

3. SLEEP FUNCTION

· In wireless mode, the keyboard backlight will automatically turn off after 3 minutes of inactivity.  
If there's no action for 30 minutes, the wireless/2.4G connection will be disconnected. Press any key to reconnect.

Note: This device has been tested and complies with the limits for Class B digital devices under Part 15 of the FCC Rules. These limits are designed to provide reasonable protection against harmful interference in residential installations.  
This device generates, uses, and can radiate radio frequency energy, and if not installed and used in accordance with the instructions, may cause harmful interference to radio communications. However, there is no guarantee that interference will not occur in a particular installation.  
If this device does cause harmful interference to radio or television reception (which can be determined by turning the device off and on), we encourage the user to try one or more of the following measures to correct the interference:  
- Reorient or relocate the receiving antenna.-  
- Increase the separation between the equipment and the receiver.- Connect the equipment to an outlet on a circuit different from that to which the receiver is connected.- Consult the dealer or an experienced radio/TV technician for help.  
Changes or modifications not expressly approved by the responsible party could void the user's authority to operate the equipment.  
This device complies with Part 15 of the FCC Rules. Operation is subject to the following two conditions:  
(1) This device may not cause harmful interference.  
(2) This device must accept any interference received, including interference that may cause undesired operation.

⚠ CHARGING INSTRUCTION ⚡

- It is recommended to charge the keyboard only via a computer USB port.
- Avoid using substandard or non-compliant power adapters to charge the keyboard.
- Avoid using over-voltage or over-current power adapters for charging.
- Keep the keyboard away from high-temperature devices while charging.
- Please turn off the power switch if the device will not be used for an extended period.

These charging instructions also apply to other rechargeable devices (keyboard/mouse/headphones/speakers, etc.).

WARRANTY CARD

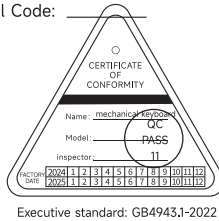
Thank you for purchasing our product. Please contact us if there is any quality issue within the warranty period. Please provide this warranty card so we can provide comprehensive after-sales service.

Product Items: \_\_\_\_\_ Customer Name: \_\_\_\_\_

Serial NO. : \_\_\_\_\_ Contact Address: \_\_\_\_\_

Purchase Date: \_\_\_\_\_ TEL / E-mail: \_\_\_\_\_

Purchase Channel: \_\_\_\_\_ Postal Code: \_\_\_\_\_



Executive standard: GB4943.1-2022