



Visit [Gun Dog Supply.com](http://GunDogSupply.com)  
Order a RRT Side Kick  
See other RRT Products



# SIDE-KICK **REMOTE LAUNCHER** OPERATING INSTRUCTIONS

**FULLY READ THE WARNINGS BEFORE OPERATING!**

# PLEASE READ CAREFULLY BEFORE ATTEMPTING TO OPERATE SIDE-KICK REMOTE LAUNCHER INSTRUCTIONS

## IMPORTANT!

### TAKE SPECIAL HANDLING CARE AND SAFETY PRECAUTIONS!

**Your Side-Kick Remote Launcher is not a firearm, but the same handling, care and safety precautions must be exercised.** Your Side-Kick Remote Launcher is provided with certain built-in safety features, but are not substitutes for safe handling practices, which include the use of ear and eye protection as well as the use of heavy leather gloves.

## DISCLAIMER

Any use or modification of the Side-Kick Remote Launcher not in conformity with the manufacturer's instructions as described in this user's manual is **AT THE SOLE RISK AND RESPONSIBILITY** of the individual performing such unauthorized use and/or modification. Direct any inquiries regarding use to Specialty Products Company prior to use or continued use of this product.

## >> WARNING

- This product can be hazardous!
- With the dummy, you are firing what is equivalent to a six to eight ounce bullet. A heavy recoil and loud report should be expected.
- Expect a loud report when the launcher is fired. Exposure to loud report may effect hearing to dogs and surrounding persons.
- NEVER insert a live load into the chamber
- NEVER use a load other than those specifically designed and recommended for use in the RRT Launcher
- NEVER aim or fire the Side-Kick Remote Launcher Unit at anyone or anything
- NEVER use a dummy other than a RRT dummy for the Side-Kick Remote Launcher Unit.
- NEVER cock the bolt until you are ready to fire
- NEVER use a dummy that has debris of any kind inside the tube, including but not limited to, mud, grass, water or rust
- NEVER cock and fire the Side-Kick Remote Launcher Unit without a cartridge in the chamber
- NEVER fire the RRT Hand Held Launchers in the Side-Kick Remote Unit if the exhaust hole in any of the shaft/barrels is/are obstructed in any way, also ensure the barrel is free of debris before every launch
- NEVER allow person or animal to be in line of launch/fire of launchers or dummies, including first and every re-load of loads, blanks and dummies

- NEVER operate the Side-Kick Remote Launcher Unit without proper ear, eye and hand protection
- NEVER place a load in the chamber before placing a dummy on the shaft/barrel
- NEVER store a dummy on barrel of launcher when not in use
- NEVER allow the Side-Kick Remote Launcher Unit to be accessible to children
- NEVER LAUNCH THE SIDE-KICK UNLESS COMPLETELY LEVEL
- NEVER USE ON UNEVEN GROUND
- DO NOT USE IN DRY CONDITIONS! Hot air or sparks could cause grass/tinder fire!
- NEVER DRY FIRE THE LAUNCHER(S). DOING SO MAY DAMAGE THE PRODUCT AND CAUSE CATASTROPHIC FAILURE WHEN FIRED IN THE FUTURE.
- NEVER FIRE/LAUNCH WITHOUT FULL CLEARANCE OF YOU THE OPERATOR, SURROUNDING PERSONS AND ANIMALS!
- NEVER POINT OR FIRE THE SIDE-KICK REMOTE LAUNCHER SYSTEM AT ANY PERSON, ANIMAL OR OBJECT!
- NEVER USE THE SIDE-KICK WITH OUT BOTH STAKES PROVIDED PROPERLY AND SECURELY AS STATED IN THE INSTRUCTIONS.

## FAILURE TO FOLLOW THESE WARNINGS MAY RESULT IN SERIOUS INJURY OR DEATH

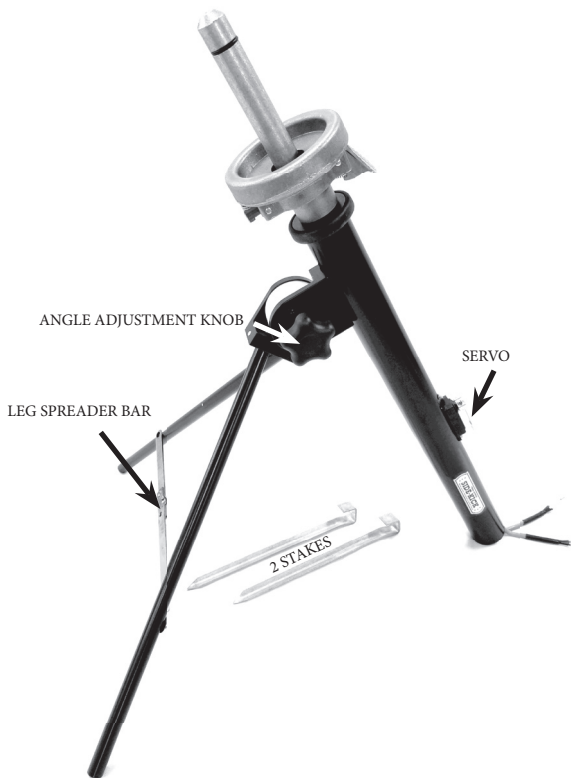
### >> BLANK POWER CHARGES

Choose your power charge based on the distance you wish to throw the dummy. Use only those charges intended for the Side-Kick Remote Launcher.

- **Light Green Load - Distance of approximately 75'-100'**
- **Medium Yellow Load - Distance of approximately 100'-150'**
- **Heavy Red Load - Distance of approximately 150' - 200'**



## FOR OUTDOOR USE ONLY!



## >> ADAPTING RRT HAND HELD LAUNCHER FOR THE SIDE-KICK REMOTE LAUNCHER SYSTEM

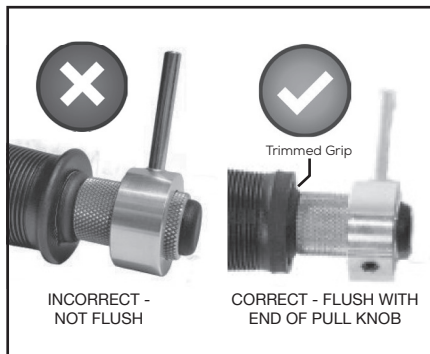
The Side-Kick Remote Launcher was designed to work with any RRT Hand Held Launcher built from 1990 to present. The RRT Launchers manufactured during this time period have a rubber ribbed hand grip and a plastic or aluminum pull knob. **If you have recently purchased a new RRT Launcher (will have RRT LAUNCHER on the grip in raised lettering) you can skip step one below.**

If you are unsure if your RRT Launcher is compatible contact Specialty Products Company before attempting to use with your Side-Kick Remote Launcher System. If your RRT Launcher is different from the ones in the images to the right, please contact us for possible retrofit options.



### DO NOT ATTEMPT TO USE OTHER MANUFACTURES HAND HELD LAUNCHERS

- 1) The rubber grip will require trimming in order to fit into the Side-Kick Launcher Tube. On the base of the grip (end closest to the pull knob) the lip of the grip must be trimmed. Please refer to image below. This can be achieved by using a sharp utility knife and turning the grip or turning the grip on a sander. Launchers manufactured after July of 2015 will not require trimming.
- 2) Install the black cap plug into the bottom of the pull knob on the RRT Launcher. Lightly tapping with a hammer will help to set the cap plug. The black plug must be installed completely into the pull knob with no gap present.
- 3) Install the aluminum pull ring onto the pull knob. Position the pull ring so it is flush with the end of the pull knob and tighten the set screw securely with the allen wrench.
- 4) Slide your RRT Hand Held Launcher (with pull ring and cap plug properly installed) into the Side-Kick Launcher Tube. Position the launcher so the pull ring shaft exits the long slot in the launcher tube. Confirm that the launcher is fully seated into the tube. A light coating of lubricant will help the launcher slide into the launcher tube. The lubricant must be cleaned off if the launcher is removed and fired by hand.



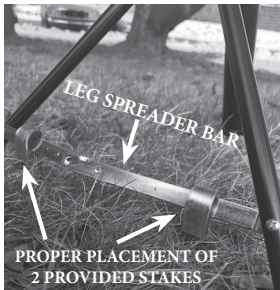
## >> PREPARATION FOR FIRING

1) Place your Side-Kick Remote Launcher where you will be training with it. Spread the legs open and press down on the leg spreader bar until the legs are in the LOCKED open position. Loosen the angle adjustment knob and position legs so that the desired launch angle is achieved. ENSURE THAT IT IS FULLY LEVEL AND NEVER USED ON UNEVEN GROUND!

2) Press the 2 metal stakes into the ground so that the hooks on top of the stake captures and secures the leg spreader bar and securely holds the Side-Kick on the ground. Place the stakes on either side of the leg spreader bar approximately 1 inch from either outside leg.

3) Install any RRT Dummy onto each launcher.

4) Open the breech of the Launcher by depressing the thumb latch. Install a green, yellow or red power level Blank Cartridge.



### !!! WARNING !!!

BEFORE PERFORMING THE NEXT STEPS USE EXTREME CAUTION!!

BE SURE YOUR FULL BODY, SURROUNDING PERSONS AND ANIMALS ARE IN A POSITION THAT IS OPPOSITE FROM THE DIRECTION OF ANY OR ALL OF THE LAUNCHERS WHERE THE DUMMIES ARE POINTING AND THE REMOTE RECEIVER IS TURNED OFF AS WELL AS UNPLUGGED FROM THE TUBE CONNECTING HARNESS!

5) Close the breech of the RRT Hand Held Launcher

6) Turn the servo arm so it is pointing in the 1 o'clock position. Some models of release systems will not send a signal that is long enough to move the servo arm from 1 o'clock around and fire the launcher. If this happens, try setting the servo arms to 2 o'clock or 3 o'clock. This will shorten the distance the servo arm needs to travel, allowing it to fire the launcher with a single press of the button.

7) Locate the remote to the receiver that you are using and ensure that it is clear of any pressure on it. Do not keep in your pocket or leave it placed on the ground where it could be walked on. ACCIDENTAL DEPRESSION OF THE BUTTON WILL CAUSE THE SIDE-KICK REMOTE UNIT TO FIRE AND COULD CAUSE INJURY OR DEATH.

8) Slide the pin/pull ring back and seat the pin into the notch ensuring that it is as far left as it can be positioned. ACCIDENTAL RELEASE OF THE PIN WILL CAUSE THE FIRING PIN TO MAKE CONTACT WITH THE POWER CHARGE AND THE LAUNCH OF THE DUMMY WILL OCCUR! ALWAYS KEEP YOURSELF, SURROUNDING PERSONS AND ANIMALS FULLY CLEAR OF THE UNIT, LAUNCHERS, LAUNCHER DIRECTION AND DUMMYS!

If using multiple Side-Kicks in the same location check to ensure that you do not have any launch interference with the launchers and/or bumpers of other Side-Kicks. Every path of launch must be clear of obstruction!

When you have completed above steps with extreme caution and you and surrounding persons and animals have full clearance you may plug the remote receiver into the Tube Connecting Harness and turn the power switch on.

You are now ready to fire your Side-Kick Remote Launcher!

## >> MAINTENANCE

User must thoroughly clean the barrel, chamber and hinge areas with a good gun cleaning solvent after each use of each RRT Launcher used in the Side-Kick Remote Launcher Unit. Before each use examine your Side-Kick Remote Launcher Unit and RRT Launchers to ensure there is no debris and no damage to the equipment. Improper maintenance and failure to properly clean the RRT Launchers and Side-Kick Remote Launch Unit may result in serious injury or death.



**User is responsible to evaluate the entire unit before every launch to ensure all fittings are secure and full functioning.**

You may purchase the Retrieval-R-Trainer Cleaning Kit at any of our retailers listed on our website at [www.rttllauncher.com](http://www.rttllauncher.com). A small amount of gun oil applied to the hinge area after cleaning will help to ensure smooth operation. Cleaning of the chamber can be enhanced by using a .22 caliber wire brush.

Also thoroughly clean and dry the inside of the aluminum dummy tube after each launch. Be certain that prior to each time you launch the dummy from your Side-Kick Remote Launcher that it is free of debris both internally and externally. **Failure to properly maintain the aluminum insert tube in your dummy may result in serious injury or death.**

A rubber "O" Ring in a groove near the outer end of the barrel provides a seal for the release gases from the power charge. This "O" Ring will wear, causing some of the gases to escape, thereby reducing the flight distance of the dummy.

Apply a thin coat of Vaseline, or any other lubricant safe for use on rubber components, to prevent drying and cracking of the "O" Ring. Replacement "O" Rings are available from our retailers on our website.

## WARRANTY

The Side-Kick Remote Launcher is guaranteed for 1 year from the date of purchase to be free of manufacturer defects. This guarantee is void if other than the recommended power charges are used or if the product is not used in conformance with these instructions. RRT dummies are guaranteed for a period of 1 year from the date of purchase to be free of manufacturer defects.

**If you do not understand the instructions or have further questions regarding the use and operation of the Side-Kick Remote Launcher please discontinue use and contact Specialty Products Company USA at (570) 729-7192 with your questions.**

## LIMITATION OF LIABILITY

In no event shall TLB Industries, Inc. be liable for any direct, indirect, punitive, incidental, special or consequential damages arising out of the use or misuse of this product. By Using this product, you assume all risks and liability in connection with it.

TLB Industries, Inc. shall not be liable for any damages arising out of or connected with the use or misuse of this product. The buyer assumes all risks and liability from the use or misuse of this product.

TLB Industries, Inc. reserves the right to change the terms, conditions under which this product is offered without further notice.

## >> WARNING

- Handler must follow all instructions and warnings for the Pro Model Retrieval-R-Trainer Hand Held Model Operating Instructions. If you do not have please go to [www.rttllauncher.com](http://www.rttllauncher.com) or contact us directly to receive a copy.
- Failure to assemble the components of this product correctly with your Retrieval-R-Trainer Launcher in addition to following these instructions with use of your RRT Shoulder Stock may result in serious injury or death.
- Use extreme caution when using the Shoulder Stock and RRT Launcher.
- Recoil from Shoulder Stock may be too excessive for some users. Start with the lowest power loads (green) first.

## DISCLAIMER

Any use or modification of the Shoulder Stock not in conformity with the manufacturer's instructions as described in this user's manual is **AT THE SOLE RISK AND RESPONSIBILITY** of the individual performing such unauthorized use and/or modification. Direct any inquiries regarding use to Specialty Products Company prior to use or continued use of this product.

Visit our website for more great products.

**[www.RRTLlauncher.com](http://www.RRTLlauncher.com)**



**TLB Industries, Inc.**

292 Dunn Road, Honesdale, PA 18431 USA

570-729-7192 | 570-729-7193 (Fax)

[info@rrttllauncher.com](mailto:info@rrttllauncher.com)