

# D30S DUAL DASH CAM

## User Manual





**COOAU**

**US&UK:** Scan the QR code to extend the warranty.

**DE:** Scannen Sie den QR-Code, um die Garantie zu verlängern.

**FR:** Scannez le code QR pour prolonger la garantie.

**IT:** Scansiona il codice QR per estendere la garanzia.

**ES:** Escanee el código QR para extender la garantía.



**APP**

**US&UK:** Scan the QR code to download the APP.

**DE:** Scannen Sie den QR-Code, um die App herunterzuladen.

**FR:** Scannez le code QR pour télécharger l'application.

**IT:** Scansiona il codice QR per scaricare l'APP.

**ES:** Escanea el código QR para descargar la APP.



**Youtube**

**US&UK:** Scan the QR code to watch the video of installation and usage.

**DE:** Scannen Sie den QR-Code, um das Video zur Installation und Verwendung anzusehen.

**FR:** Scannez le code QR pour regarder la vidéo d'installation et d'utilisation.

**IT:** Scansiona il codice QR per guardare il video di installazione e utilizzo.

**ES:** Escanee el código QR para ver el video de instalación y uso.

**US:** [support-us@cooau.com](mailto:support-us@cooau.com)  
**EU/UK:** [support-eu@cooau.com](mailto:support-eu@cooau.com)

## FCC Statement

This device complies with Part 15 of the FCC Rules. Operation is subject to the following two conditions:

- (1) This device may not cause harmful interference, and
- (2) This device must accept any interference received, including interference that may cause undesired operation.

**FCC CAUTION:** Any changes or modifications not expressly approved by the FCC CAUTION: Any changes or modifications not expressly approved by the equipment.

**NOTE:** This equipment has been tested and found to comply with the limits for a Class B digital device, pursuant to Part 15 of the FCC Rules. These limits are designed to provide reasonable protection against harmful interference in a residential installation. This equipment generates, uses and can radiate radio frequency energy and, if not installed and used in accordance with the instructions, may cause harmful interference to radio communications. However, there is no guarantee that interference will not occur in a particular installation. If this equipment does cause harmful interference to radio or television reception, which can be determined by turning the equipment off and on, the user is encouraged to try to correct the interference by one or more of the following measures:

- Reorient or relocate the receiving antenna.
- Increase the separation between the equipment and receiver.
- Connect the equipment into an outlet on a circuit different from that to which the receiver is connected.
- Consult the dealer or an experienced radio/TV technician for help.

**FCC Radiation Exposure Statement:**

This equipment complies with FCC radiation exposure limits set forth for an uncontrolled environment.

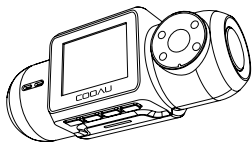
This equipment should be installed and operated with minimum distance 20cm between the radiator and your body.

**FCC ID: 2AYHB-D50**

# English

1. Packing List.....	1
2. Warm Tips.....	2
3. Camera Overview .....	2
4. Screen Overview.....	4
5. Installation .....	6
6. Basic Operations.....	10
7. Specifications .....	24
8. Warranty & Support .....	26

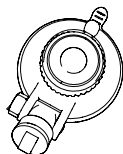
# 1. Packing List



COOAU D30S  
Dual Dash Cam



Car Charger



Suction Cup Mount



USB Cable (11.81ft)

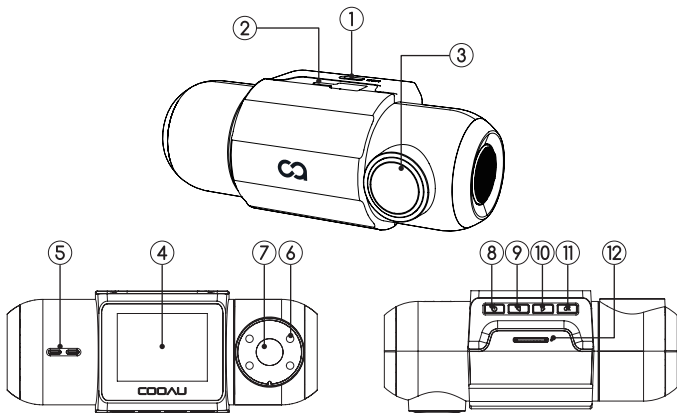


User Manual

## 2. Warm Tips

- Please read the manual carefully before use.
- The dash cam must always be connected to a power source in order to work.
- This product requires a memory card to be inserted in order to record video.
- Please do not install the dash cam in a position that may block your driving vision.
- Please use the product away from high temperature and humid environment.
- The first time turn on the camera or restore it to default settings, it will jump directly into the settings, namely language setting, time setting and speed unit setting. And also remind you insert a memory card if there isn't a memory card.

## 3. Camera Overview






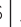
1	Micro USB Charging Port
2	Mount Slot
3	Front Camera Lens
4	LCD Screen
5	<b>Indicator</b> <ul style="list-style-type: none"> <li>• Flashing Red: Recording;</li> <li>• Steady Blue: Charging.</li> </ul>
6	IR LED Lights
7	Inside Camera Lens
8	<b>Power/Emergency/Menu/ Back Button</b> <ol style="list-style-type: none"> <li>1. Long Press It to Power ON/OFF.</li> <li>2. Under Video Mode: <ul style="list-style-type: none"> <li>• Recording: Short press it to manually lock files to reserve important videos during recording;</li> <li>• No Recording: Short press it to go to menu.</li> </ul> </li> <li>3. Under Menu Mode: Short press it to return to the previous menu.</li> </ol>
9	<b>Photograph/Microphone/Up/Delete Button</b> <ol style="list-style-type: none"> <li>1. Under Video Mode: <ul style="list-style-type: none"> <li>• Recording: Short press it to start photographing;</li> <li>• No Recording: Turn on or turn off Microphone.</li> </ul> </li> <li>2. Under Navigation Menu: Short press it to select upward;</li> <li>3. While Viewing Files: Short press it to delete files.</li> </ol>
10	<b>Display Option/Down Button</b> <ol style="list-style-type: none"> <li>1. Under Video Mode: Short press it to select different display options: Front Camera, Inside Camera, PIP Front Full Screen, PIP Inside Full Screen;</li> <li>2. Under Navigation Menu: Short press it to select downward.</li> </ol>
11	<b>OK/Pause/Play/Video</b> <ol style="list-style-type: none"> <li>1. Confirm option;</li> <li>2. Under Video Mode: stop/start the video recording;</li> <li>3. While Viewing Files: play/pause the video;</li> </ol>
12	<b>SD Card Slot</b> Read SD card



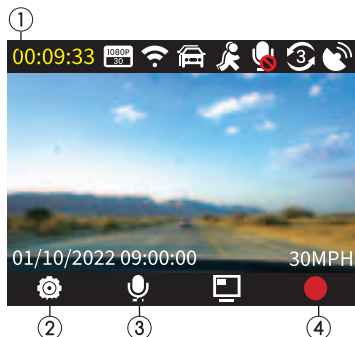
## 4. Screen Overview

### 4.1 Recording Mode



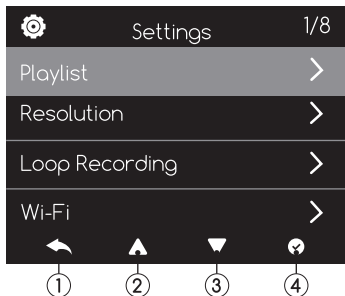
1	Recording	2	Recording Time
3	Video Resolution	4	Wi-Fi is ON  /OFF 
5	Parking Mode is ON/OFF	6	Motion Detection is ON/OFF
7	Sound Recording is ON/OFF	8	Loop Recording Interval
9	GPS: Strong GPS Signal  No GPS Signal 	10	Current Date/ Time/Speed
11	Emergency Recording	12	Snapshot
13	Display Option Switching	14	Pause Recording

## 4.2 Non-Recording Mode



1	Remaining recording time of the card	2	Menu
3	Sound Recording ON  /OFF	4	Recording Video

## 4.3 Menu Mode



1	BACK	2	UP	3	DOWN	4	OK
---	------	---	----	---	------	---	----

## 5. Installation

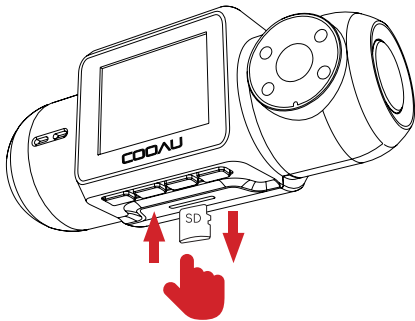
### 5.1 Insert the SD Card

#### 5.1.1 The Precautions of SD Card (Not Included)

1. Support U3, Class10, 32-256GB SD-card.
2. We recommend using an SD card from well-known brands such as Samsung and Toshiba, cause they are more suitable for our high-end dash cam.
3. Each card has a limited number of times it can be written to and erased. It is normal for the card to develop problems after a long period of use. If you experience any problems, please contact our customer service ([support-us@cooau.com](mailto:support-us@cooau.com)).

#### 5.1.2 How to insert the SD Card.

1. Please insert the SD card as the following picture shows. (Pay attention not to insert in a wrong way or the card will get stuck and break the cam).
2. Gently press the card inward and it will pop out.



## 5.2 Format the SD Card

### To format the SD card correctly

Please format the memory card to exFAT or FAT32 in computer and then format it on dash cam before use.

(If your memory card is 32GB format it as FAT32, if your memory card is 64-256GB, format it as exFAT.)

### Note:

1. We recommend formatting the SD card once every 2 weeks to maximize the life of the card.
2. Do not remove or insert the SD card while the camera is on, this will cause the camera to shut down and may damage the card or cause data loss.

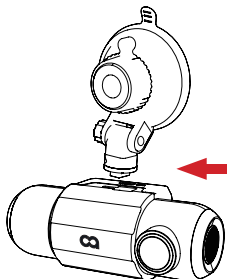
## 5.3 Install the Dash Cam onto the windshield

### 5.3.1 Before Installation

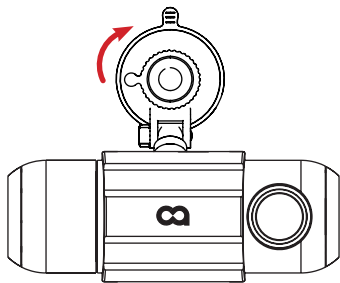
1. Package contents: Make sure you have all the components listed in the package.
2. Choosing the ideal location: choose a suitable location to install the camera. The camera should be positioned to capture the road ahead.
3. Prepare the vehicle: park the vehicle in a safe location and turn off the ignition before starting the installation.

### 5.3.2 Installation of Suction Cup Mount

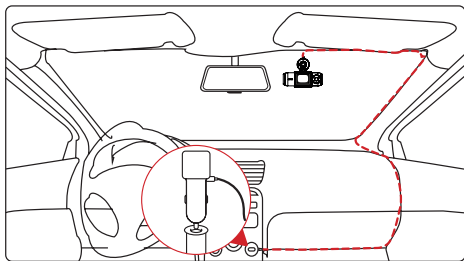
1. Install the suction cup mount onto the mounting connector of the dashboard camera by pushing it in until it is in place.



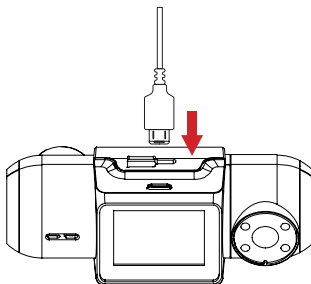
2. Clean the windshield with water or alcohol.
3. Wipe the suction cup until there is no dust on it.
4. Fix the suction cup onto the windshield and rotate the locking lever on the suction cup upward by 90 degrees until it clicks into place.



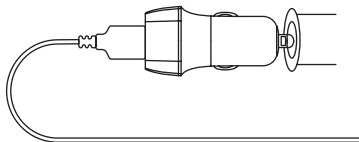
5. Carefully route the power cable around the windshield and tuck it under the trim.



6. Connect the provided car charger to the charging port on the dashboard.



7. Plug the charger into a 12V socket, 12V accessory power, or USB port to obtain power.



8. Start the car.
9. The dashboard camera will automatically power on and start recording.

### 5.3.3 After Installation

1. Test the camera: Make sure the camera is working properly and capturing clear video.
2. Adjust: If necessary, fine-tune the camera angle and settings to achieve optimal recording quality.
3. Regular maintenance: Check the camcorder regularly for dust, debris or obstructions that may affect recording quality, clean the camcorder lens and adjust the angle if necessary.
4. For further assistance or troubleshooting, please contact our customer service at [support-us@cooau.com](mailto:support-us@cooau.com).

#### Note

1. The suction cup mount is held in place by suction and may fall off after a period of use due to external factors (temperature, humidity, air pressure, etc.). If you live in an area where the climate changes significantly, we recommend that you reinstall the cradle every 2 months or so.

2. The suction cup mount is easy to install and remove, allowing you to move it to another vehicle or location.
3. High temperatures can cause the suction cups to deteriorate. If your mount keeps coming off easily, please contact our customer support team ([support-us@cooau.com](mailto:support-us@cooau.com)) for a free replacement mount or a 3M adhesive mount!

## 6. Basic Operations

### 6.1 Instruction for Menu Setting

#### 6.1.1 Play List:

Normal Video/Emergency File/Photo

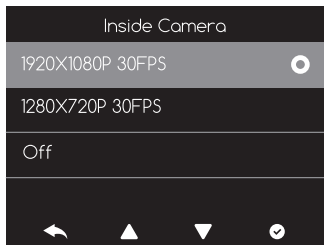
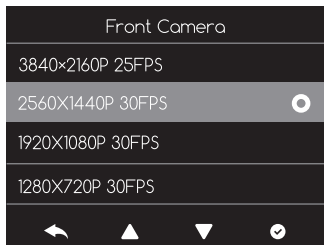
#### 6.1.2 Resolution:

Front camera/Inside camera

- **Default:** Front+Inside Recording Mode:  
2560x1440P +1920x1080P 30FPS

You can set the resolution of the front and inside cameras, and the inside camera can be turned off separately.

- **Note:** When you choose the front camera up to 3840x2160P, the inside camera will automatically turn off.



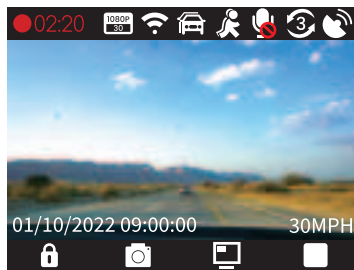
### 6.1.3 Loop Recording:

1-Minute/3-Minutes/5-Minutes (Default: 3 Minutes)

- After inserting the memory card and connecting the power, the dash cam will automatically turn on and enter loop recording. The duration of each recorded video will be saved based on the loop recording time you set, saved in the Normal Video folder.
- When the capacity of the Normal Video folder reaches 60% of the total capacity, the new loop recording file will automatically overwrite the original loop recording files, so as not to stop recording during the driving process.

**Note:** The normal operation of the loop recording function is very dependent on the speed of the memory card, so please format the memory card regularly to avoid problems such as excessive memory card files and card aging that affect the normal loop recording. Please check the loop recording video regularly to avoid the important videos being overwritten by loop.

During recording, the red indicator lamp and the red dot in the upper left corner of the screen will blink.





### 6.1.4 Wi-Fi:

On/Off (Default: On)

#### Download the APP

Download the "COOAU Dash" APP (Or Compatible APP: "Aoni CarDVR") from APP store or Google play or scan the QR code.



COOAU Dash



Aoni CarDVR

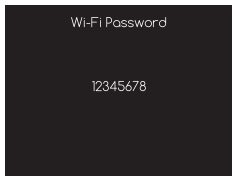
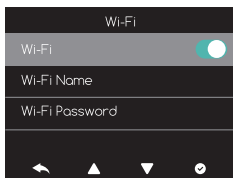


Scan to download  
the APP

**Warm tip:** In order to continuously optimize the customer experience, APP may be updated from time to time. APP may be slightly different due to upgrading and maintenance, which does not affect your normal use.

#### Connect the APP

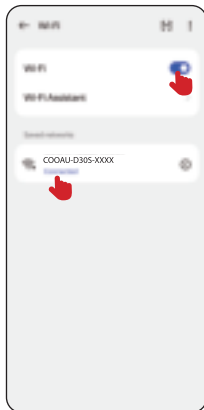
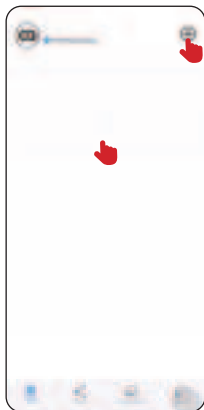
1. Please turn on Wi-Fi in the camera. (Wi-Fi name: COOAU-D30S-XXXX, Default password: 12345678)



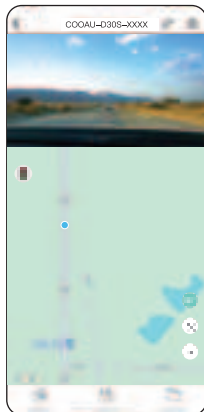
2. Turn on the APP and log in (New users need to registration before logging in, and the password cannot contain punctuation marks).

3. Tap "+" to add camera.

Choose connect Wi-Fi and enter password "12345678" to join it.



4. Device Added



## Tips of the APP

1. When you first time use the APP, you need to register an account and authorize the location and network through the Internet, this is to protect your data privacy and allow you to control the camera through the APP smoothly.
2. The camera's Wi-Fi is only used for data transmission between the camera and the APP, it does not have the function of internet access to provide remote service, we recommend you to stay connected within 5-10 meters.
3. The camera can record normally even without the APP. Don't worry about the camera stopping working when your phone is not with you.
4. The initial password for this device is only used for initial login. In order to prevent potential security risks, please be sure to change the initial password after the initial login to prevent others from logging into your device without authorization or other adverse consequences.
5. If you forget the password, you can open the dash cam's settings and choose Wi-Fi to see it.  
Or you can go to the unit's "System Settings" and choose Default Settings. After restoring default settings, the Wi-Fi password is the initial password (12345678). Please note that the camera's Wi-Fi password can only be changed via the app.
6. With the app connected with your cam, you can change settings, record videos, view, download and share videos and pictures to social medias. In addition, video files with GPS information can be played on the App.
7. After connecting your cam to the App, you can only operate the cam on your phone.



Scan the QR code for FAQ & Troubleshooting Guide or Enter the URL:  
<https://www.cooau.com/pages/cooau-support> to get more help.

### 6.1.5 GPS:

On/Off (Default: On)

1. GPS can record driving speed, latitude, longitude (coordinate) and driving route among which the speed, latitude and longitude (coordinate) are directly printed on the video as watermarking.
2. Turn on the driving route recording in the App COOAUDash, and you can play back the video and view the driving route in the App COOAUDash.

### 6.1.6 Speed Display:

On/Off (Default: On)

Driving speed will be displayed in video stamps when the program is on, and will not be displayed when it is off.

### 6.1.7 Speed Unit:

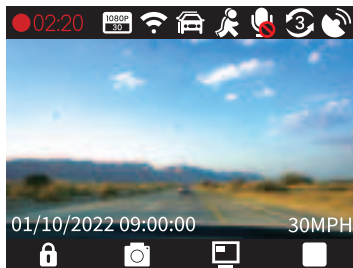
KM/H, MPH (Default: MPH)

This is to set the speed unit of your car.

### 6.1.8 Display Option (Default: PIP Front Full Screen)

Front Camera/Inside Camera/PIP Front Full Screen/PIP Inside Full Screen.

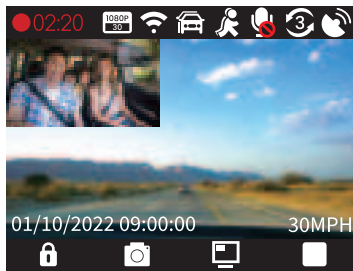
1. Front Camera - The image captured by the front cam will be displayed in full screen.



2. Inside Camera - The image captured by the inside cam will be displayed in the full screen.



3. PIP Front Full screen - The image captured by the inside cam will be displayed in the upper left of the corner, while the image captured by the front cam will be displayed in the full screen at the same time.



4. PIP Inside Full Screen - The image captured by the front cam will be displayed in the upper left of the corner, while the image captured by the inside cam will be displayed in the full screen at the same time.



#### 6.1.9 G-Sensor:

Off/Low/Medium/High (Default: Medium)

The G-sensor measures shock forces and locks the video recorded at the time. We suggest you should select medium because high sensitivity will result in many unnecessary video clips being saved to the emergency file.

### 6.1.10 Parking Monitor (Default: Off)

- Time-lapse/Motion Detection/Parking Mode/Off

When the camera detects that the ACC power is off (the car is parked and turned off), it stops recording and saves the current video, turns off the screen and enters standby mode.

You can select one of the following modes:

1. Time-lapse: After the car is turned off, the camera records at a frame rate of 1 frame per second until the car is started again. The video is saved in the normal file.
2. Motion detection: After the car is turned off and the camera is in standby, if the camera detects movement in front of the lens, it starts recording 30 seconds of video and saves it to the normal file. (During video recording, the camera screen is off, the blue indicator light is always on, and the red indicator light blinks.)
  - If the imager continues to detect a moving object in front of the lens while recording 30 seconds of video, it will continue to record video for up to 5 minutes (maximum setup time for loop recording).
  - If no object is detected in front of the lens during 30 seconds of video recording, the camera will stop recording and return to standby mode.
3. Parking mode: After the car is turned off and the camera is in standby mode, once the camera detects a collision (triggering the G-Sensor), it will start to record 30 seconds of video and save it to the emergency file. (During video recording, the camera screen is off, the blue indicator light is always on and the red indicator light is flashing)
  - If the G-SENSOR continues to detect a collision while the imager is recording a 30-second video, the imager will continue to record video for a maximum of 5 minutes (Maximum setup time for loop recording).
  - If the G-SENSOR does not detect a collision while the camera is in the process of recording 30 seconds of video, it will stop recording and re-enter standby mode.
  - When the car restarts, the dash cam will play a voice reminder: "Parking mode was activated while you were away". Prompt the user to view the emergency video.
4. Off: If the camera is not powered by the ACC hardwire kit or this mode is selected, the camera will shut down during parking and will not start recording.

**Note:** Continuous power supply is required to realize parking monitoring please use the ACC hardwire kit (ACC, BATT, GND) with micro USB to connect the camera to the car's power supply.

Hardwire kit is not included. If you need, please contact our after-sales team to get ([support-us@cooou.com](mailto:support-us@cooou.com)).

#### 6.1.11 Screen Off:

Off/30 Seconds/1 Minute (Default: Off)

If you do not operate the camera during setup, the screen will automatically close. The screen saver will not affect normal recording. You can press any button to return to the recording interface.

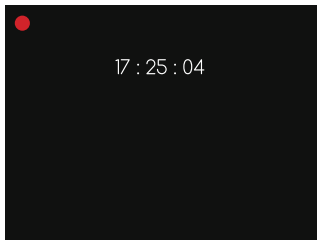
#### 6.1.12 Screen Saver:

Off/30 Seconds/1 Minute (Default: Off).

If you have no operation on the camera during the setting time, the screen will automatically go off. The LCD displays the time and the upper left corner displays the red dot. Screen saver will not affect the normal recording. You can press any button to return to recording interface.

#### Note:

- When the screen off program and the screen saver program are turned on at the same time, the camera only executes the screen off program.
- The screen off program needs to be turned off to execute the screen saver.



#### 6.1.13 Mirror Image Correction:

On/Off (Default: On)

Turn this function on and the image of the inside camera will become normal in the screen.

#### 6.1.14 Video Stamp:

On/Off (Default: On)

If you turn it off, the COOAU, GPS information and time watermark will be removed from the videos.

#### 6.1.15 Sound Recording:

On/Off. (Default: On)

You have the option to turn audio recording on or off. This can help protect your privacy.

### 6.1.16 Volume Setting

1. Button Beep: On/Off. (Default:On)
2. Turn on/off the"beep"when you operate the camera.
3. System Volume: 100%/75%/50%/off (Default: 75%)
4. Video playback Sound: 100%/75%/50%/off (Default: 75%)

#### **Note:**

When you turn it off, this does not affect the sound recorded by the camera itself.

### 6.1.17 Infrared Light:

On/Off/Auto(Default: Auto)

1. The IR light is invisible in order not to affect driving safety. The IR light helps a lot during night recording.
2. The images turns into white and black when Infrared LEDs is on.

### 6.1.18 WDR:

On/Off. (Default: Off)

Suitable for situations like low light or backlight, WDR is able to restore the true colors of objects to the greatest extent.

### 6.1.19 Headlight Reminder (Default: Off)

1. Options: On, Off
2. When this function is turned on, if the light in front of the vehicle is too dark, the trip recorder will pop up a window to remind you to turn on the headlights.

### 6.1.20 Fatigue Driving Alert:

Off/1 Hour/2 Hours/4 Hours. (Default: Off)

When the time interval you set finishes, there will be a sound reminding you to get some rest after a period of driving. You can set your own fatigue driving time according to your mental condition and traffic regulations.

### 6.1.21 EV Setting

1. +2.0,+1.7,+1.3,+1.0+0.7,+0.3,+0.0-0.3,-0.7,-1.0,-1.3,-1.7,-2.0
2. When shooting the sky, water and other scenes, the image tends to be black, the image is discolored and easy to be distorted. How to solve this problem?
3. Cause analysis: in a scene that has large contrast, the camera's auto exposure function will be affected and thus causing image color change.
4. Solution: It can be corrected by adjusting the EV Setting. Higher value means brighter image.



#### **6.1.22 Frequency:**

50Hz/60Hz. (Default: 60Hz)

Please choose the proper one according to local situation.

**Note:** The screen will appear horizontal stripes interference during the recording because of the wrong setting of frequency.

#### **6.1.23 Time/Date**

Set system time/date.

#### **6.1.24 Car Plate Stamp**

1. Preset 9-character positions, each with the optional letter a-z and the number 0-9.
2. If you set your car license plate, they will be printed on videos as watermarking.

#### **6.1.25 Language:**

English/ 日本語 /Deutsch/Français/Italiano/Español/ 简体中文 .  
(Default: English)

#### **6.1.26 Format Reminder:**

On/Off. (Default: On)

This function is to remind you to format the card regularly.

#### **6.1.27 Deleting Reminder:**

On/Off. (Default: Off)

1. The camera will overwrite the oldest locked video once the emergency file accumulates 40% of the card capacity.
2. When the emergency file is over 30%, the camera will remind you every 5 minutes. If you turn it off, the system will overwrite automatically.
3. Prompt Content: Please delete locked files or save them to other device.

#### **6.1.28 Default Settings**

Restore all settings to the initial factory settings.

#### **6.1.29 Format**

The operation will delete all data on the memory card.

#### **6.1.30 Card Information**

View the storage information.

### 6.1.31 Version

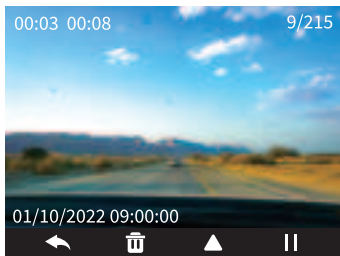
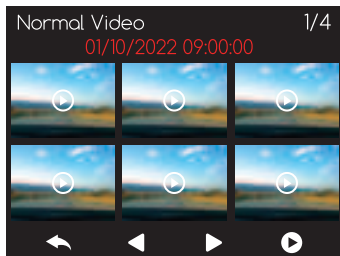
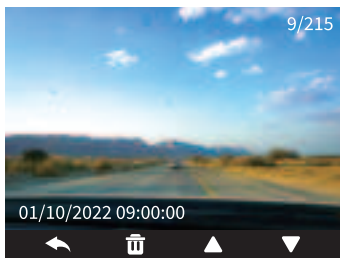
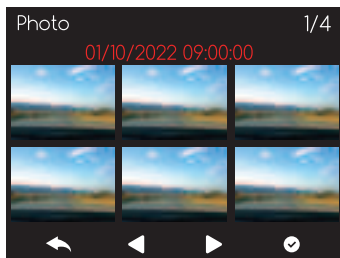
View the software information.

**Please note:** Our camera may undergo periodic updates that include bug fixes and changes to the user interface (UI). As a result, the screenshots you see in the manual may differ from the actual UI of the camera you receive. Please don't worry, the basic framework of the camera hasn't changed much. You just need to follow the instructions to use it properly.

## 6.2 Viewing Video/Photos

### 6.2.1 Viewing Video/Photos on the Camera

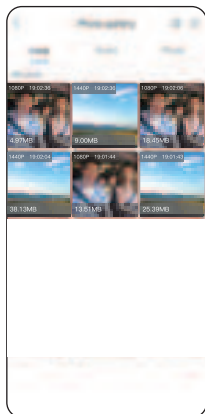
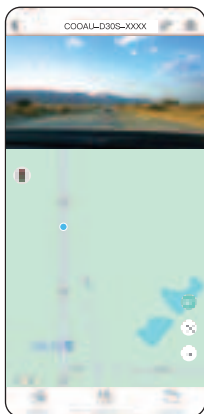
1. Go to "Playlist"
2. Press OK and UP/DOWN button to navigate to "Normal Video" / "Emergency File" / "Photo" to view and playback videos or photos on camera.
3. Press the UP/DOWN buttons to select the file and press "play" button to playback/pause.



## 6.2.2 Viewing Video/Photos on the APP

If you want to view all files on the APP, please follow the steps as below.

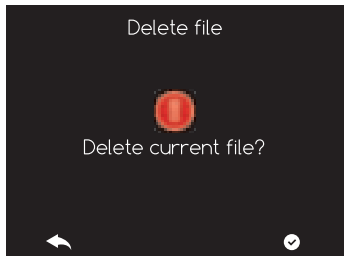
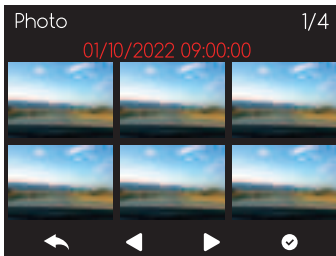
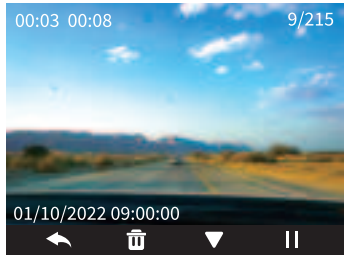
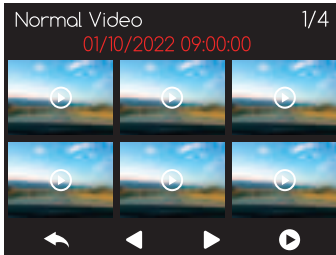
1. Click "Connect DVR"
2. Click "Enter DVR"
3. Click "Albums"
4. You can view the videos and photos on your phone.
5. There are "Loop", "Event" and "Photo" to choose.



## 6.3 Delete Video/Photos

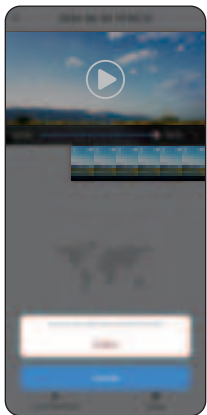
### 6.3.1 Delete Video/Photos on the Camera

Go to Normal file / Emergency file / Photo, playback the video on the dash cam, press delete button and choose "Yes".



### 6.3.2 Delete Video/Photos on the APP

To delete files on the APP, click the “delete” button, then click “OK”.



## 7. Specifications

<b>Model</b>	COOAU D30S
<b>Display</b>	1.5 inch LCD screen
<b>Languages</b>	English/ 中文 / 日本語 /Deutsch/Français/Italiano/ Español (Default: English)
<b>Video Resolution</b>	Front Camera: 2160P/ 1440P/ 1080P/ 720P Inside Camera: 1080P/ 720P/ Off
<b>Image</b>	JPEG format
<b>Audio</b>	Built-in microphone and speaker
<b>Memory Storage</b>	External: Micro SD Card (32GB to 256GB Card in FAT32 or exFAT, Class 10)
<b>USB Port</b>	Micro USB

## Safety Warnings

- Generally, memory cards have a life span, and long-term use of memory cards may result in data not being saved. In this case, it is recommended to purchase a new memory card for use. If the data is destroyed due to the long-term use of the memorycard, the company will not be held responsible.
- Do not install or operate this product while the vehicle is running. Do not subject the product to strong shocks or vibrations, which may damage the product and cause malfunction or inoperability.
- Do not place the product in an open flame. Do not use the product in high temperature and high humidity areas, as this may cause electric shock, short circuit, and other hazards and damage the product.
- It is forbidden to disassemble or modify the car charger, otherwise it will cause personal injurycharger by yourself, or use a short-circuit caru electric shock, fire and other dangers or damage the product.
- In order to continuously improve our customers' experience with our products, we will update the firmware from time to time. If you need, you can update the firmware.
- Please note that you may not be able to connect to the COOAUDash app when using wireless CarPlay or Android Auto.
- Please use this product as permitted by law.

## 8. Warranty & Support

### Activate Warranty

1. COOAU Dash Cam comes with a full 12 months warranty, If you register your product on our official site (<https://www.cooau.com/pages/cooau-support>), you can extend the warranty to 24 months.
2. Or you can scan the QR code for extend the warranty to 24 months.



### Help and Support

COOAU is firmly committed to improving our products, services, and user experience. Any suggestions on how we can do even better, we welcome your constructive feedback and suggestions. Contact with us at [support-us@cooau.com](mailto:support-us@cooau.com).