

E-PoC Advanced Dispatcher

A Professional Windows PC Dispatcher

Quick Start User Guide



IMPORTANT

By using this product you agree to the terms and conditions of Entel's E-PoC Service License which can be viewed [here: www.entel.co.uk/EPoC_LICENSE](http://www.entel.co.uk/EPoC_LICENSE)

1. INSTALLATION

1.1. MINIMUM SYSTEM REQUIREMENTS

Component	Recommended
Operating System	Windows 7 32/64 Windows 8 32/64 Windows 10 32/64
Processor Speed	Minimum 2 GHz
RAM	8 GB of RAM
Hard Drive	500 Gb
Display	Standard color display
Network	Card standard network
Audio	Audio interface for speaker and microphone
USB Interface	For optional table microphones
Software	Java Runtime Environment SE 8 (32 bit)

1.2. DOWNLOAD

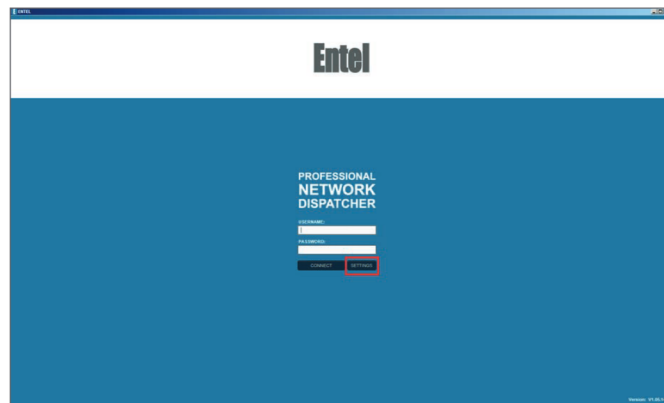
Please download the installation file from www.entel.co.uk/EDISP_Installer

2. FIRST USE

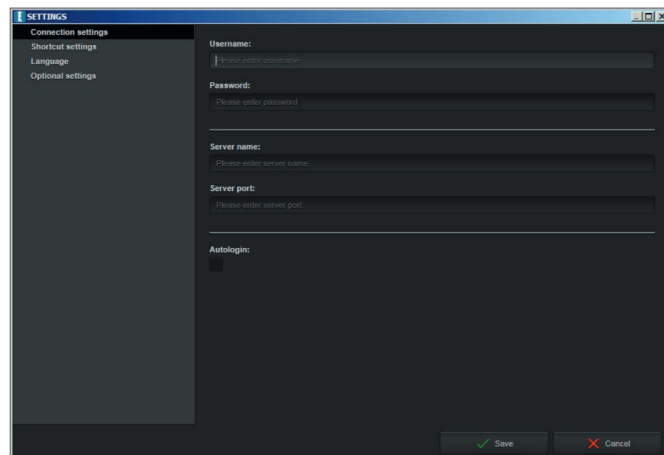
Please note: if not already installed the Dispatcher will ask you to download Java on its first run (it will provide a link to the Java download page).

You must install the 32-bit version (no matter your PC OS version) before the program will run.

Click on 'Settings':



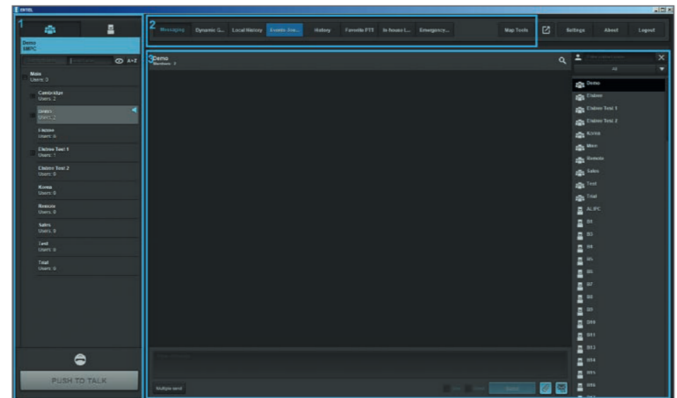
Now enter the login information provided by your Entel Dealer (Username, Password, Server name and Server port):



If required, check 'Autologin' and click 'Save'.

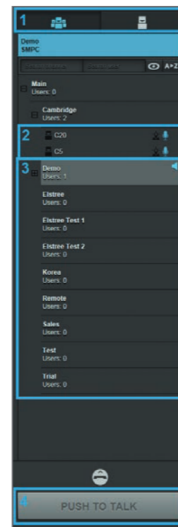
3. FUNCTIONS

3.1. MAIN CONTROLS



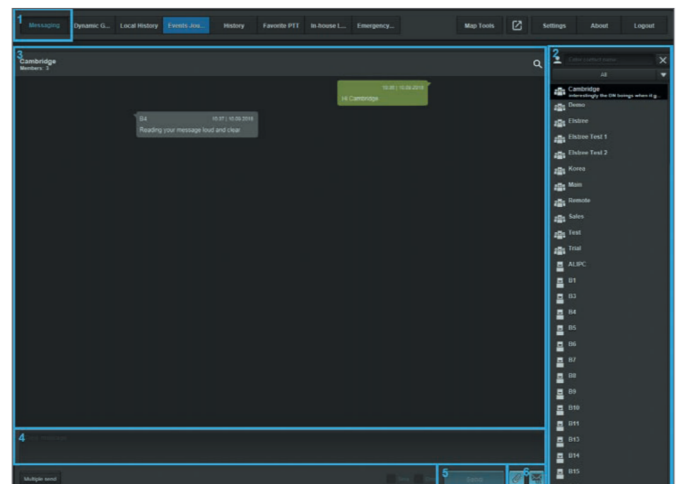
- 1 Communication controls
- 2 Activated plugins
- 3 Plug-in window

3.2. COMMUNICATION CONTROLS



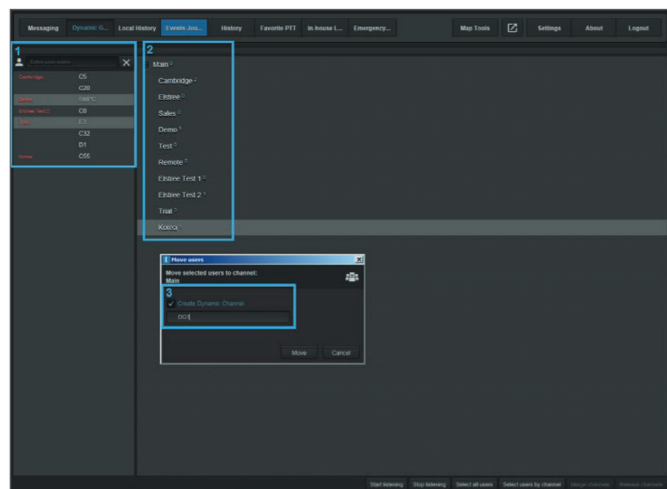
- 1 Group and user list
- 2 Online users
- 3 Double-click to change to the respective Group / User
- 4 Press and hold the Esc key or click and hold on the PTT button to speak to the active Group / User (release to receive)

3.3. MESSAGING



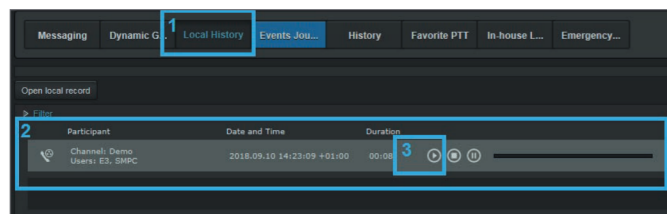
- 1 Click on 'Messaging' and the messaging window will be displayed
- 2 Select the Group or User you want to send the message to
- 3 Message window shows sent and received messages for the selected Group / User
- 4 Click in the message entry box and type your message
- 5 Click the Send button to send your message
- 6 Send Attachment or Status Message

3.4. DYNAMIC GROUPS



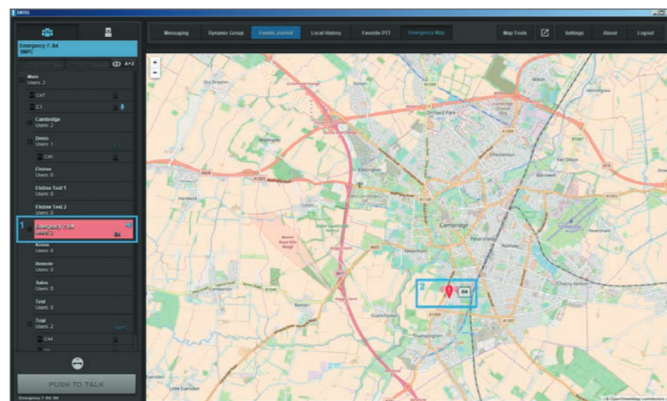
- 1 Select the Users to be added to the Dynamic Group
- 2 Drag and drop the Users to an existing Channel (Group) and click 'Move'
- 3 To create a new Channel (Group):
 - 1 Check the 'Create Dynamic Channel' tick box
 - 2 Enter the Dynamic Channel (Group) name
 - 3 Click 'Move'

3.5. CALL RECORDINGS



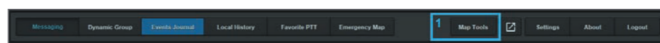
- 1 Click on 'Local History'
- 2 If enabled, calls will be recorded and displayed here
- 3 Click on the 'Play' icon to listen to a recording

3.6. EMERGENCY MAP



- 1 Incoming emergency visual notification
- 2 Location of emergency

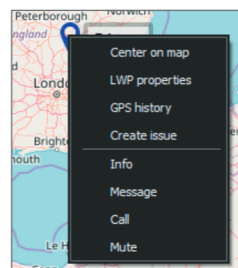
3.7. GENERAL MAP



- 1 Click on 'Map Tools' to open the General Map in a new window.



- 1 GPS position of users currently online, right click for options:
- 2 Map Toolbar (drag and drop to change position on the screen)



- 1 Edit tool (used to create Geo-Zones on the map)
- 2 Circular selection tool (enables multiple users to be selected)
- 3 Show User list
- 4 Add Waypoints
- 5 Guard Tour list
- 6 Geo-Zones list
- 7 GPS History tracks
- 8 Change Group colour



Entel's E-PoC software has been optimised in conjunction with TASSTA GmbH

Contact

For more information about our products, please contact us:

Entel UK, 320 Centennial Avenue Centennial Park, Elstree, Borehamwood, Hertfordshire WD6 3TJ, United Kingdom

+44 (0)20 8236 0032

info@entel.co.uk

entel.co.uk