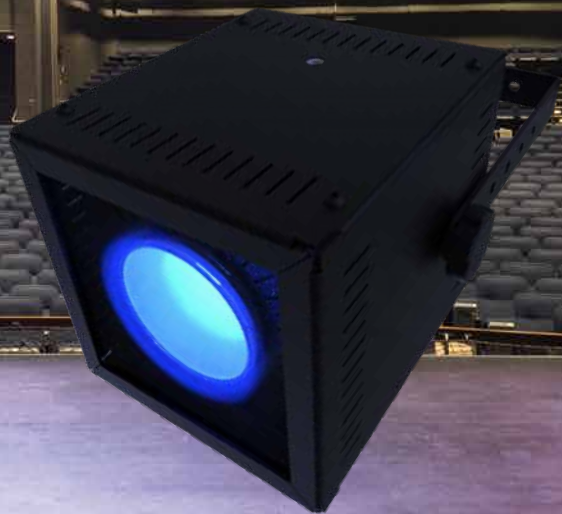


CANTO USA

INNOVATIVE LIGHTING PRODUCTS

cWORK Worklight Series & cRUN Running Light Series Installation Manual

Energy Efficient LED Engine Worklight and Running Lights



cWORK & cRUN

The cWORK & cRUN Series

Energy Efficient LED Light Engine Worklights and Running Lights

CAREFULLY READ THE INSTALLATION INSTRUCTIONS BEFORE USING THIS FIXTURE.

The document provides the standard installation instructions for a qualified, trained systems integrator or electrical contractor. Please read all warnings, notices, and instructions in this guide before installing or using this product.

The instructions given here ensure safe usage of this product. Failure to comply with the installation, operation, maintenance and safety procedures mentioned in this manual as well as those generally applicable to lighting equipment, may cause the fixture not to perform as expected.

CantoUSA accepts no liability for direct, indirect, incidental, special, or consequential damages resulting from failure to follow the installation, operating, maintenance and safety procedures described in this manual. These limitations extend to damages for personal injury, property damage, loss of operation, loss of profits, loss of product or loss of time, whether incurred by the customer, the customer's employees, or third-party vendors or users.

Apart from the instructions given in this manual, all relevant safety and health standards of the appropriate local city and state electrical/safety directives must be complied with.

PLEASE SEE OUR GENERAL TERMS OF SALE AND WARRANTY CARD PROVIDED WITH YOUR NEW EQUIPMENT OR EMAIL US FOR A COPY AT ANY TIME.

Note: Information contained in this document may not be duplicated in full or in part by any person without prior written approval of CantoUSA. Its sole purpose is to provide the user with product and installation information on the CantoUSA cWORK/cRUN.

IMPORTANT INFORMATION

PRODUCT SAFETY NOTICES

When using electrical equipment, basic safety precautions should always be followed including the following:



- READ AND FOLLOW ALL SAFETY INSTRUCTIONS.**
- Do not use outdoors unless the product is specified to operate in outdoor environments.
- Do not mount near gas or electric heaters.
- Equipment should be mounted in locations and at heights where it will not readily be subjected to tampering by unauthorized personnel.
- The use of accessory equipment not recommended by the manufacturer may cause an unsafe condition.
- Do not use this equipment for other than intended use.
- Warranty and service issues, please refer to your certified local CantoUSA dealer.



**For more information on this product please
contact us at 888-252-5912 or visit our
website at cantousa.com**

CANTOUSA
INNOVATIVE LIGHTING PRODUCTS

BEFORE YOU GET STARTED, PLEASE READ THESE INSTALLATION INSTRUCTIONS COMPLETELY.

WARNINGS



WARNING: You must have access to a main circuit breaker or other power disconnect device before installing any wiring. Be sure that power is disconnected by removing fuses or turning the main circuit breaker off before installation. Installing the device with power on may expose you to dangerous voltages and damage the device. A qualified electrician must perform this installation.

WARNING: Refer to National Electrical Code® and local codes for cable specifications. Failure to use proper cable can result in damage to equipment or danger to personnel.

WARNING: This equipment is intended for installation in accordance with the National Electric Code® and local regulations. It is also intended for installation in indoor applications only. Before any electrical work is performed, disconnect power at breaker box and switch off the appropriate breaker on the circuit the cWORK/cRUN is being installed on to avoid shock or damage. It is recommended that a qualified electrician or systems integrator perform this installation.

WARNING: This Lighting Fixture IS NOT for residential installation or use.

THIS PRODUCT MUST BE INSTALLED IN ACCORDANCE WITH THE APPLICABLE INSTALLATION CODE BY:
A PERSON FAMILIAR WITH THE CONSTRUCTION AND OPERATION OF THE PRODUCT AND THE HAZARDS
INVOLVED.

POWER REQUIREMENTS



WARNING! The cWORK/cRUN should be connected to a constant circuit (on / off) or dimmer rack. Read this section carefully on how to properly connect your fixture.

The cWORK/cRUN operates on 120VAC, single phase only and draws a maximum of 92 Watts. This luminaire offers ON or OFF operation or can be connected to a dimmer or a dimmer-controlled circuit.



**For more information on this product please
contact us at 888-252-5912 or visit our
website at cantousa.com**

CANTOUSA
INNOVATIVE LIGHTING PRODUCTS

BEFORE YOU GET STARTED, PLEASE READ THESE INSTALLATION INSTRUCTIONS COMPLETELY.

INSTALLATION INSTRUCTIONS FOR THE cWORK AND cRUN

WHAT'S INCLUDED IN THE BOX



cWORK White Unit

OR



cRUN Blue Unit

CONNECTING POWER

The cWORK/cRUN is supplied with a 1 - meter TRUE1 Connector. This cable can be connected to any single-phase 120 VAC power source. The cWORK/cRUN TRUE1 input/output connection is at the rear of the unit. Maximum of 12 cWORK/cRUN units can be daisy chained using 12 AWG wire.



IMPORTANT! The cWORK/cRUN must be connected to and properly grounded to a viable earth ground.



**For more information on this product please
contact us at 888-252-5912 or visit our
website at cantousa.com**

CANTOUSA
INNOVATIVE LIGHTING PRODUCTS

BEFORE YOU GET STARTED, PLEASE READ THESE INSTALLATION INSTRUCTIONS COMPLETELY.

CONNECTING



Note:

When connecting, match the notch on the cable connector to the corresponding guide slot on the chassis.



SAFETY WARNING:

Incorrect insertion may cause electrical contact misalignment resulting in equipment malfunction and/or personal injury.



Note:

After inserting properly as in illustration A, twist the cable connector clockwise to lock.



Note:

The proper twist-lock is achieved when the silvery tab is in the position shown in C and an audible «click» is heard.

DISCONNECTING



For more information on this product please contact us at 888-252-5912 or visit our website at cantousa.com

CANTOUSA
INNOVATIVE LIGHTING PRODUCTS

INSTALLATION INSTRUCTIONS FOR THE cWORK AND cRUN: (CONTINUED)

MOUNTING

The cWORK/cRUN is simple to install and position where work lighting is needed. The unit should be installed with a C-Clamp and Safety Cable. (Supplied by others). When mounting the cWORK/cRUN, you must follow and abide by all national and local codes for safe installation and use. Unit weight, without accessories is 4.7 lbs. (2.13 kg)

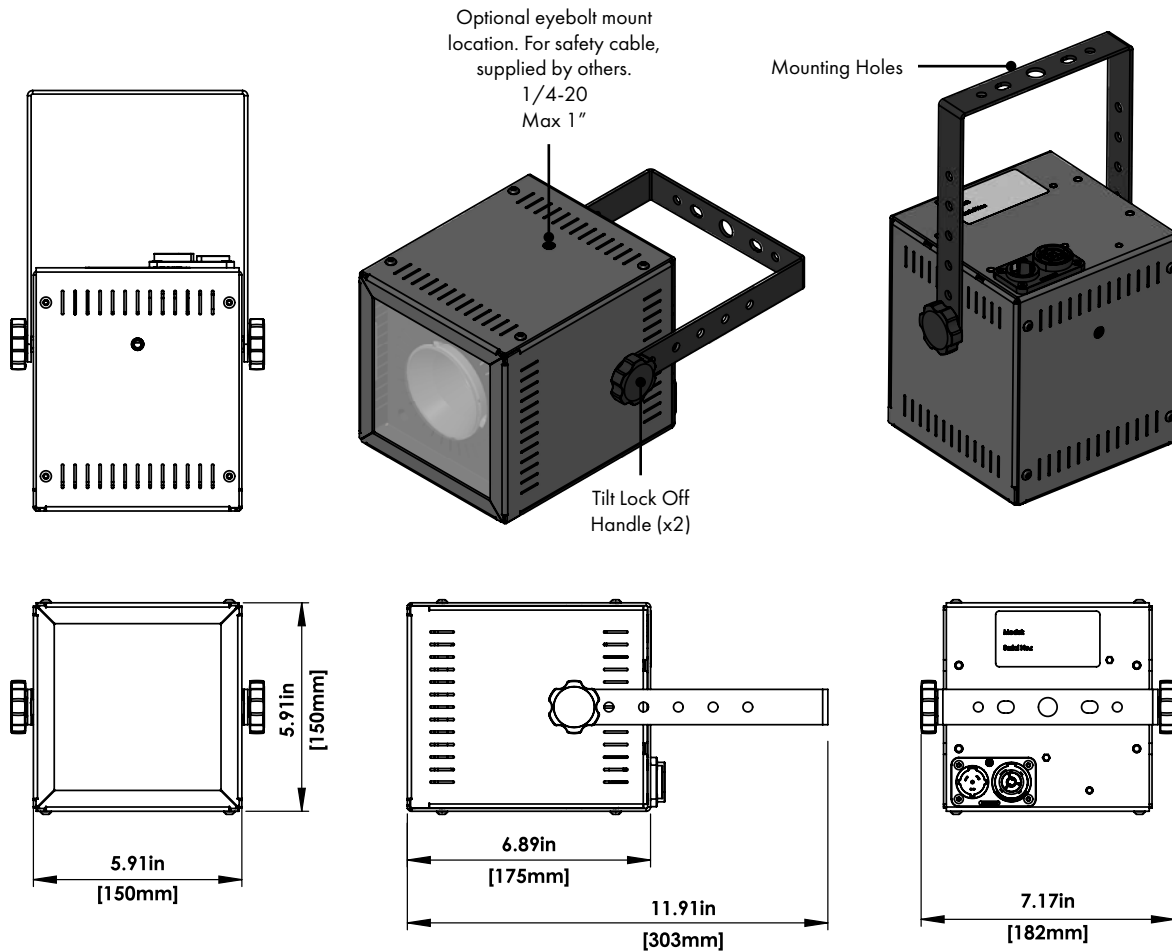


Figure 1: cWORK/cRUN Light Features



NOTE: A safety cable (supplied by others) should be used and may be required by codes when hanging this luminaire.

ADJUSTING TILT

The cWORK/cRUN can have its tilt adjusted via the two lock knobs on each side of the luminaire (refer to Figure 1). Simply loosen, but (DO NOT REMOVE) each knob so the unit is able to swing up and down. Set tilt as desired angle and re-tighten the two locking knobs so the unit does not move from the set position.



For more information on this product please
contact us at 888-252-5912 or visit our
website at cantousa.com

CANTOUSA
INNOVATIVE LIGHTING PRODUCTS

CHANGING THE REFLECTOR ON THE cWORK AND cRUN:

STEP 1

Place the cWORK/cRUN on a flat surface. Using a number 1 Phillips screwdriver, remove the 4 screws circled in red. Keep those screws, they will need to be reinstalled when the reflector has been changed. Reference Figure 1.

STEP 2

Remove side panel and set it aside. With the side panel removed, remove the outer lens and set it aside. Reference Figure 1.

STEP 3

If supplied with a diffuser, remove it by popping it off the reflector and set aside. Using your thumb and index finger, remove the reflector by twisting it counterclockwise - 1/8 of an inch. Reference Figure 1.

STEP 4

Install the new reflector by lining up the 3-tab slots on the reflector to the 3 tabs on the COB holder. Turn 1/8 of an inch clockwise to lock the reflector into place. Snap the diffuser, if supplied, onto the new reflector by lining up the 4 tabs and snapping it into place. Reference Figure 2.

STEP 5

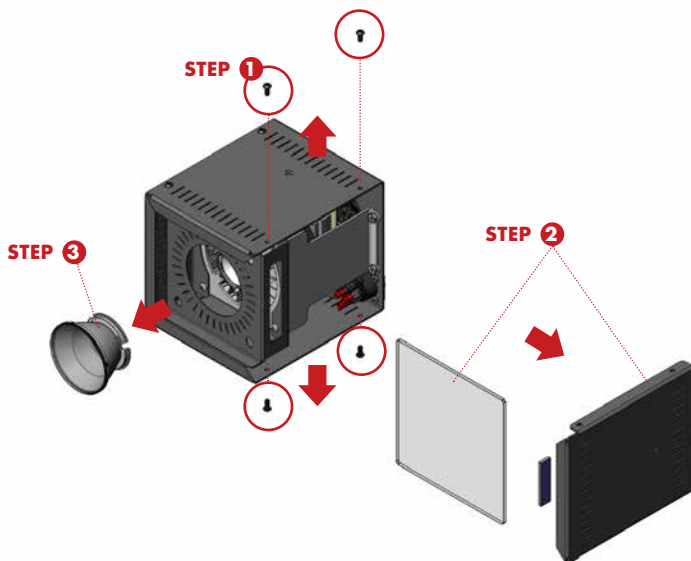
Reinstall the outer lens by sliding it back into the access port. Reinstall the side panel. Reference Figure 2.

STEP 6

Reinstall the 4 screws provided. Reference Figure 2.

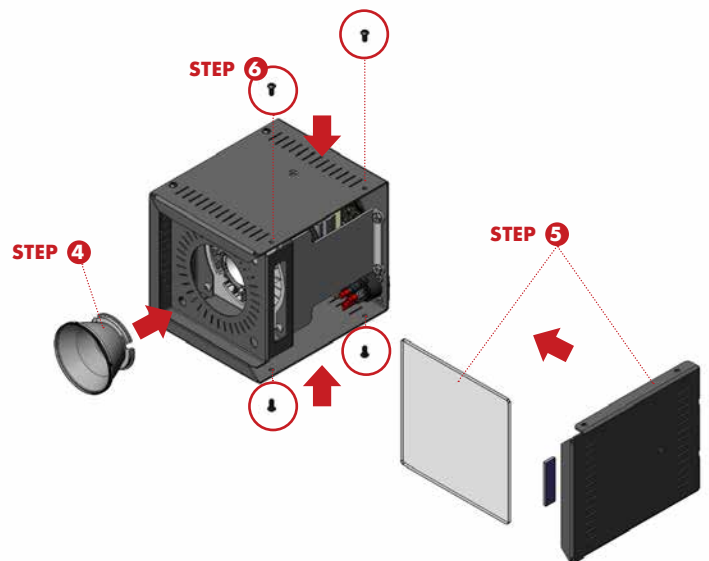
DISASSEMBLY

Figure 1



REASSEMBLY

Figure 2



For more information on this product please
contact us at 888-252-5912 or visit our
website at cantousa.com

CANTOUSA
INNOVATIVE LIGHTING PRODUCTS

CLEANING AND CARE INSTRUCTIONS FOR THE cWORK AND cRUN



WARNING! All cleaning should be performed with power completely shut off at the break box or unplugged from the AC outlet. Never remove protective covers from luminaire when powered. Wear appropriate protective eye wear and gloves when cleaning the fixture. All service and maintenance, other than described herein, should be performed by a qualified technician or authorized dealer service center. **AT NO TIME SHOULD THE LED BE TOUCHED.**

SPECIAL CLEANING AND CARE INSTRUCTIONS

Being a solid-state fixture, and unlike most fixtures, the cWORK/cRUN requires only simple routine maintenance by the user.



WARNING! Do not use ammonia-based cleaners, acetone, or other harsh solvents on or near the LED source on the cWORK/cRUN. These types of cleaners or solvents can will damage the fixture.

If you have any questions regarding the use or care of your cWORK/cRUN, please contact CantoUSA technical support or your local Authorized Dealer.

SERVICE AND MAINTENANCE

For all other service and maintenance issues, please contact CantoUSA or an authorized CantoUSA dealer.



WARNING! Disassembly (other than as described herein), alterations, unauthorized service, etc. will void the product warranty. Contact CantoUSA or you local Authorized dealer for technical support and service.

TROUBLESHOOTING:

Should the cWORK/cRUN not function please check power, all connections, and the installation instructions to make sure that it was installed correctly. If the unit still does not function we recommend you call us at **888-252-5912** or contact the local dealer who supplied the product to you.

ACCESSORIES:

CantoUSA offers accessories for use with the cWORK/cRUN. Please call your dealer or our sales team at **888-252-5912** should you need to order these.

SPARE PARTS

All components are available as spare parts. We strongly recommend you always use original components as spare parts. Please call our technical team at **888-252-5912** should you need to order and/or replace any parts on your cWORK/cRUN unit.

WARRANTY

Our warranty covers all structural and manufacturer defects for three years from the date you purchased this product and 10 years on any LED array. In case of any issues, we strongly recommend you call us at **888-252-5912** or contact the local dealer who supplied the product to you. In any case, please report the serial number of the product when making a warranty claim.



**For more information on this product please
contact us at 888-252-5912 or visit our
website at cantousa.com**

CANTOUSA
INNOVATIVE LIGHTING PRODUCTS