

[How To] Create MSI Recovery Image and Restore System with MSI Center Pro

MSI recommends all users to back up the system in case of most errors. For the models with pre-installed Windows system, MSI Center Pro provides “System Restoration” & “MSI Recovery” options for creating a restore point and system backup image. Here are the differences between “System Restoration” & “MSI Recovery”.

System Restoration:

Creates a system restore point when the system is running properly. When the system encounters any problems, revert to an earlier restore point that keeps all the files and settings.

MSI Recovery (for pre-installed Windows system only):

- MSI Image Backup: Creates an MSI preload system recovery disk. When restoring the system with the recovery disk, all the personal files will be deleted and the customized settings will be restored back to factory defaults.
- Customize Image Backup: Save the customized image backup to an external disk. When restoring the system with the customized image, the system will revert to the customized backup configuration and all the personal files and settings will be kept.

For detailed functions and operation instructions of system restoration & MSI recovery, please refer to the steps below,



Outline

How to create/manage system restore point? 3

How to restore the system to the previous restore point? 4

How to create MSI recovery disk?..... 5

- MSI Image Backup..... 5
- Customize Image Backup 8

How to restore the system by recovery disk? 11

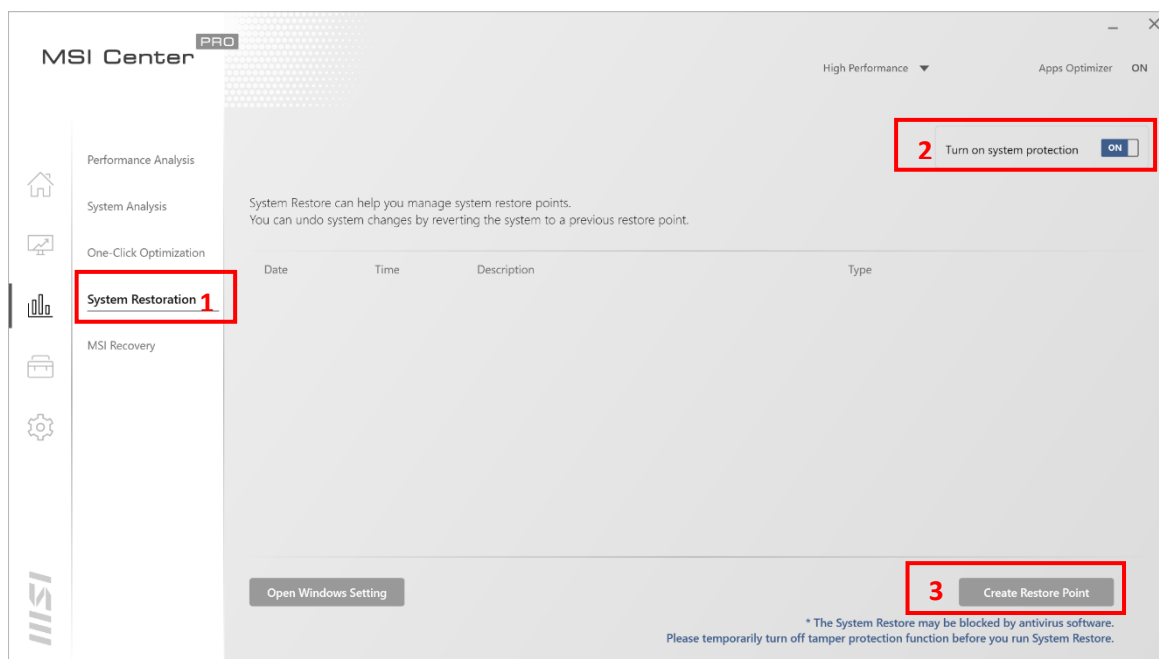
- MSI Image Restore 11
- Customize Image Restore..... 14

How to perform boot repair?..... 17

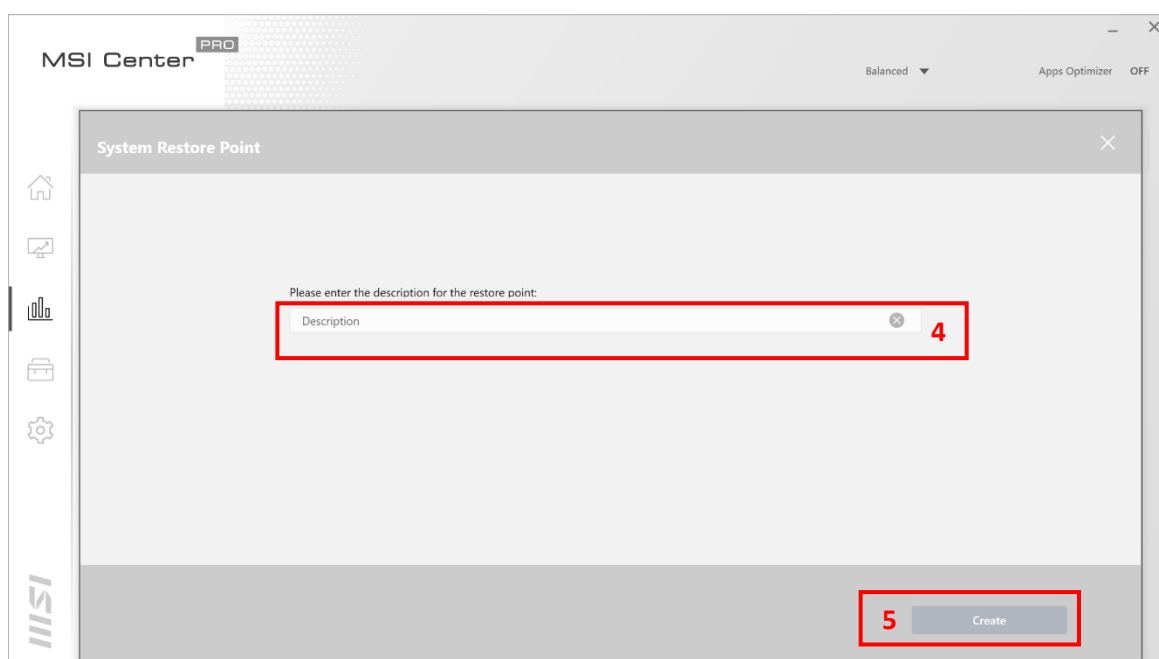
How to create/manage system restore point?

Note: It's suggested to create the system restore point regularly, as the most current Windows builds might not allow the system to downgrade back to an earlier Windows build and cause the restore point to fail to work if the restore point was created a long time ago.

1. Go to MSI Center Pro > System Analysis > System Restoration.
2. Enable “Turn on system protection”.
3. Click on “Create Restore Point”.

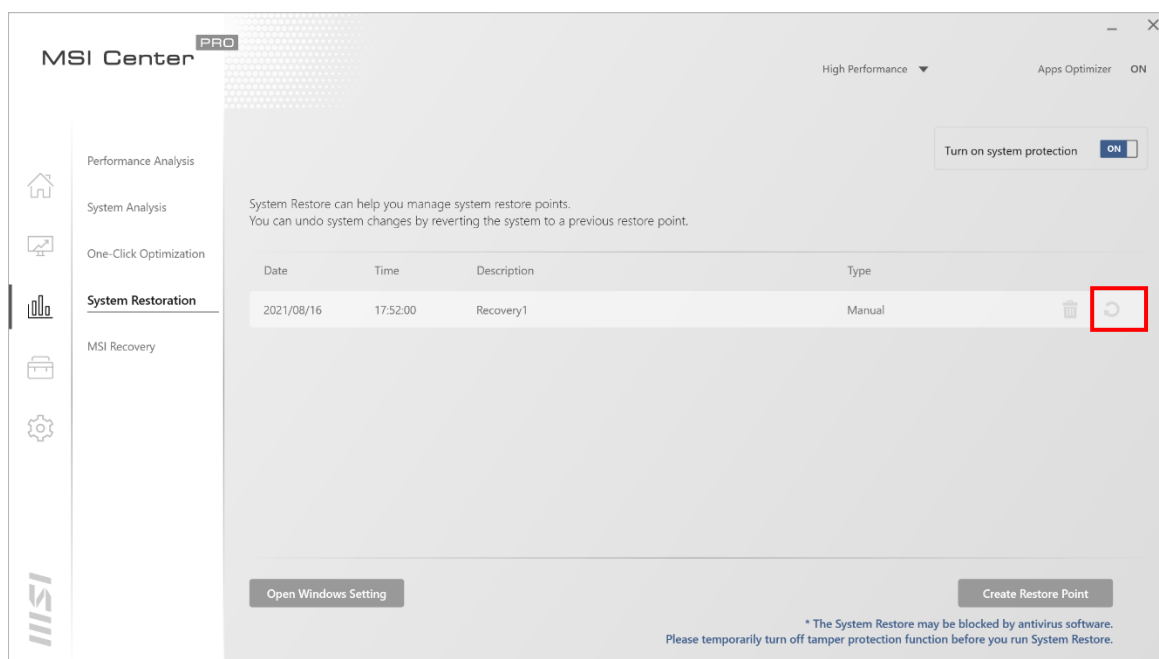


4. Enter the description.
5. Click on “Create” button.

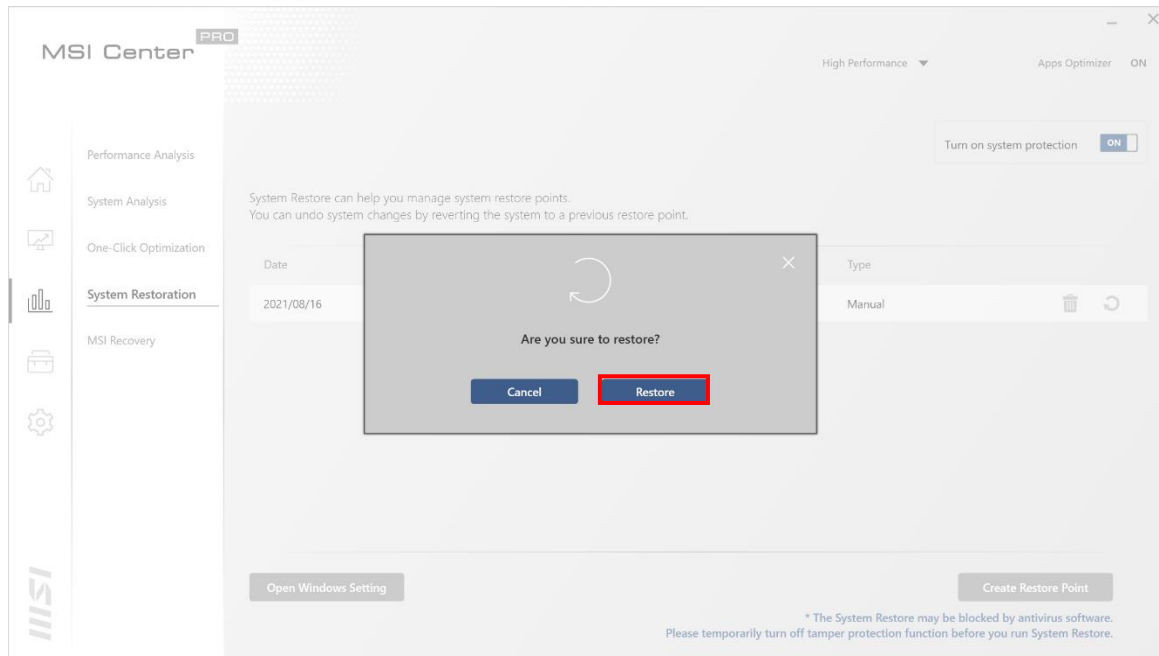


How to restore the system to the previous restore point?

1. Go to MSI Center Pro > System Analysis > System Restoration.
2. Click on the restore icon.



3. Click on "Restore" button to restore the system to the desired restore point.



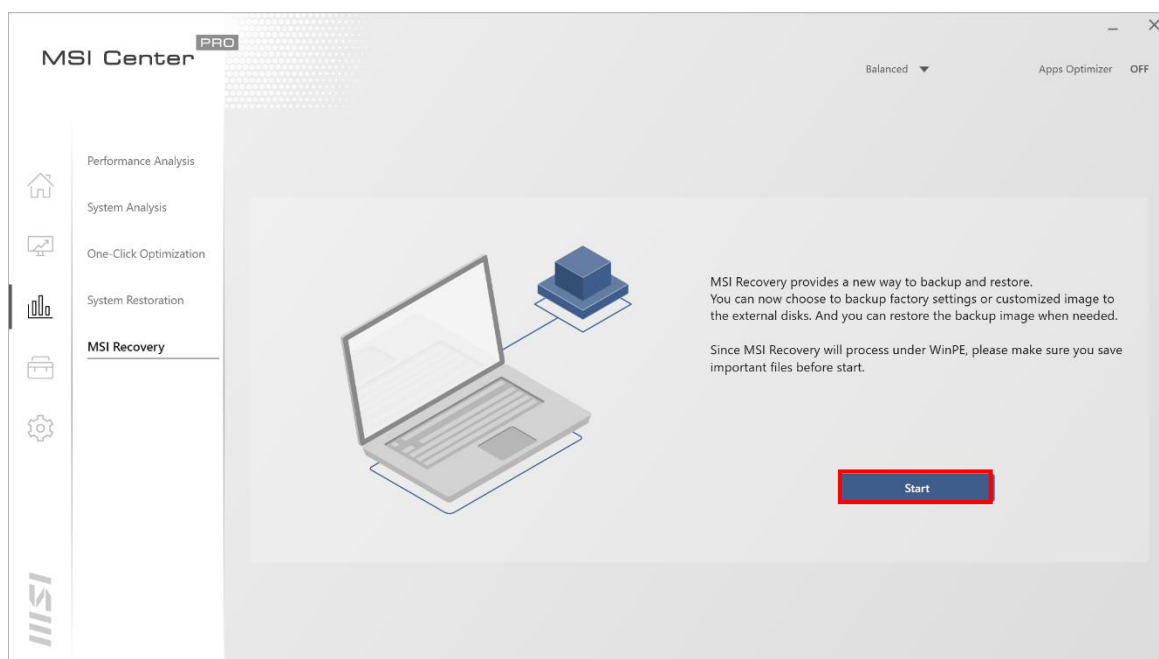
How to create MSI recovery disk?

- MSI Image Backup

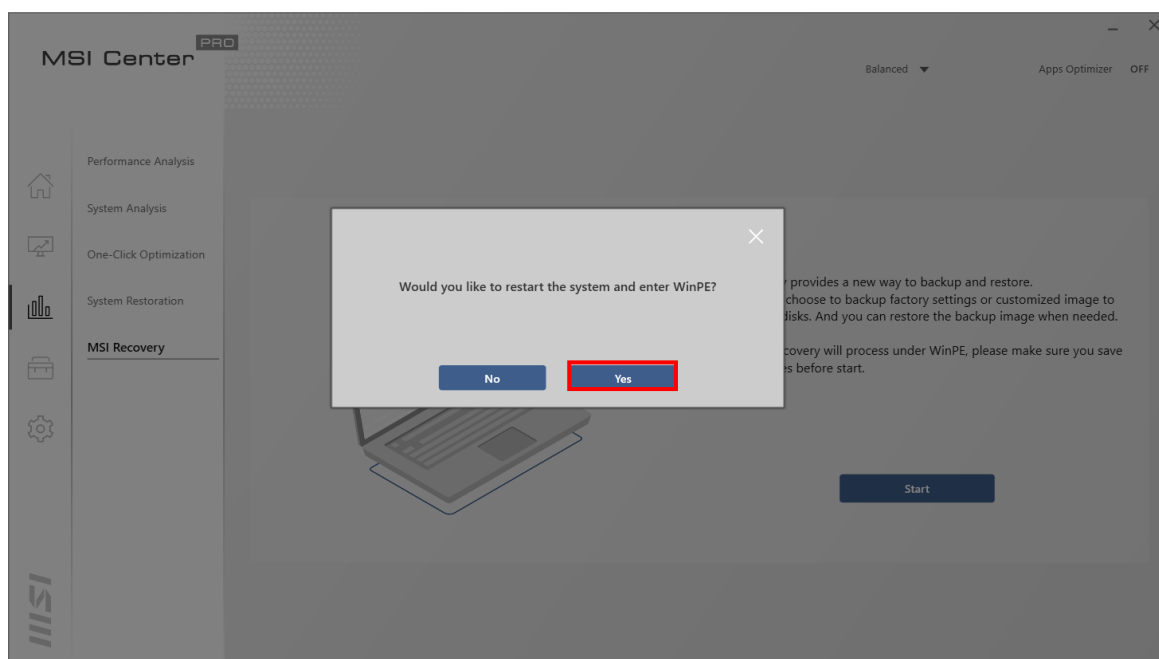
Before Starting:

- Prepare a **32GB** or larger USB flash drive.
- Keep the AC adapter plugged during the whole recovery process.
- Do NOT modify (move or delete) any system files or clean the system disk.

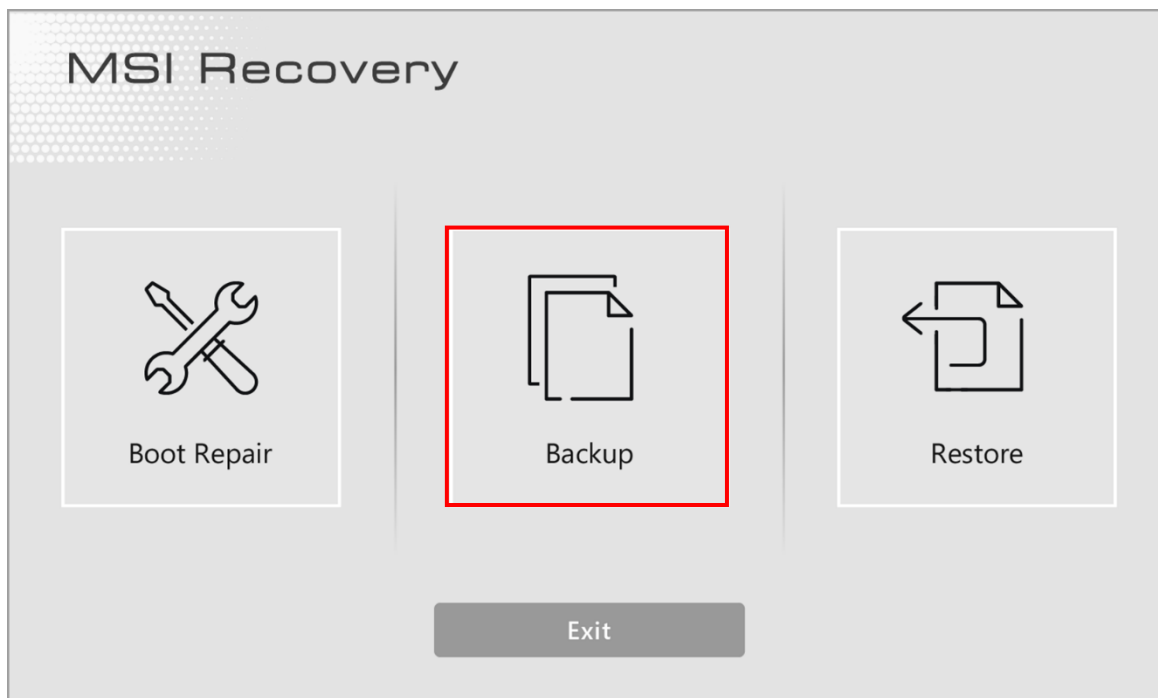
1. Go to MSI Center Pro > System Analysis > MSI Recovery.
2. Select Start.



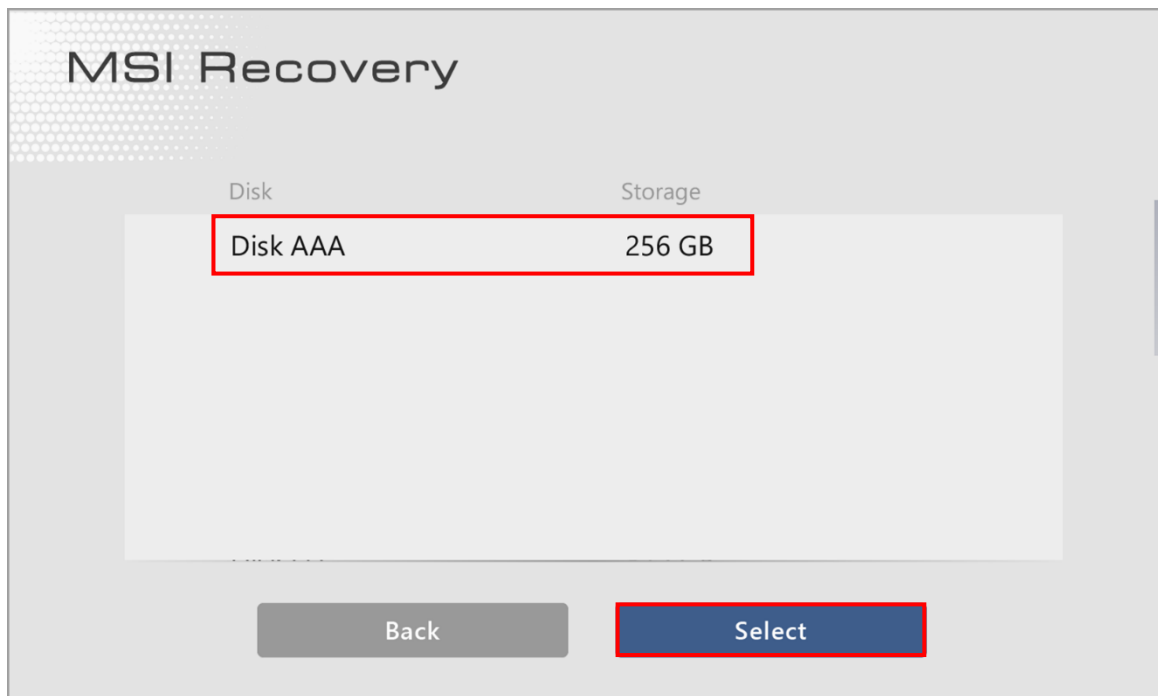
3. Click "Yes" to restart and enter WinPE mode.



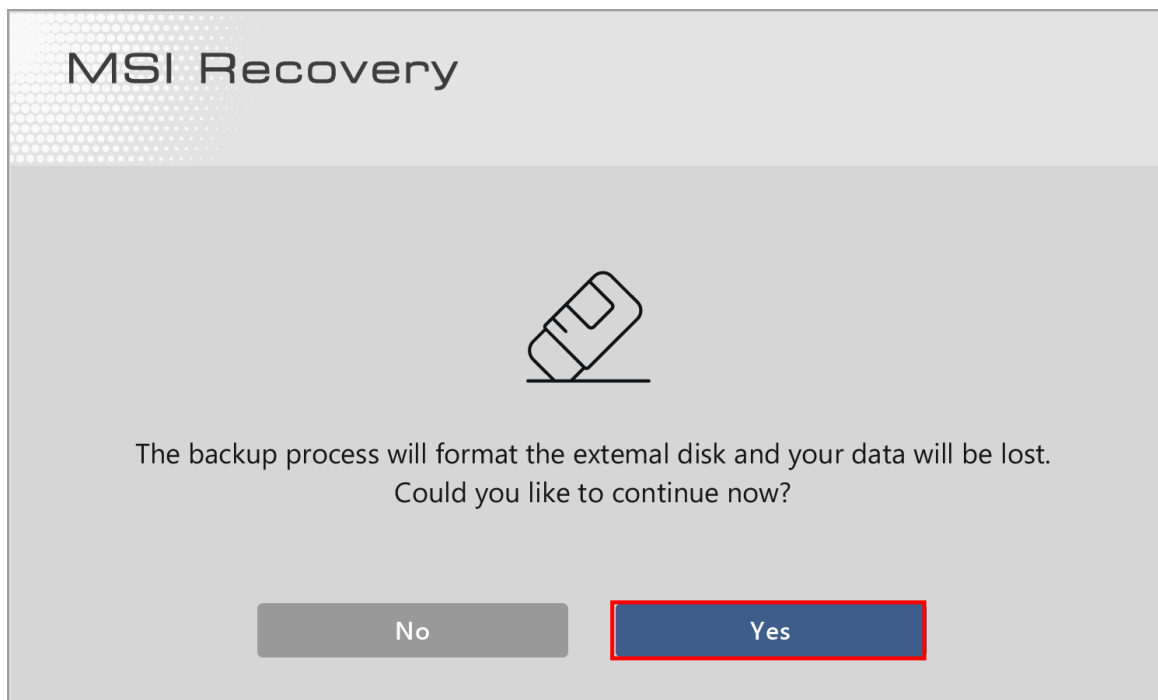
4. Insert a USB flash disk with the capacity required and select “Backup” in WinPE menu.



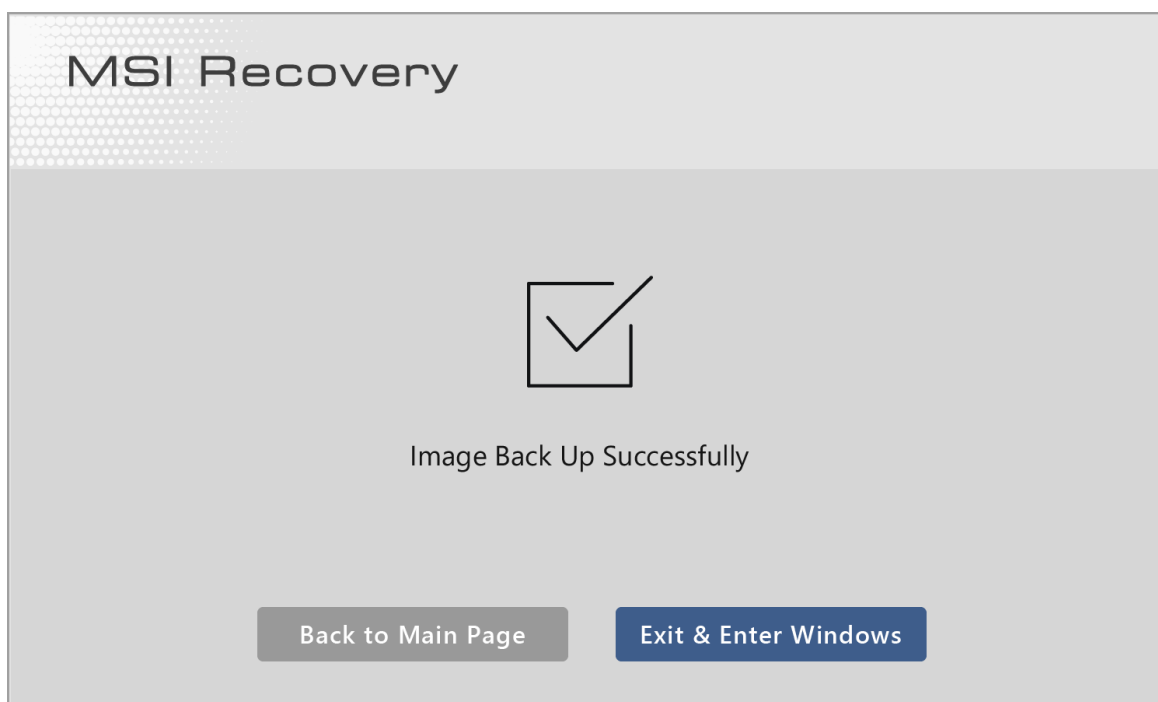
5. Select the directory path of the inserted USB flash disk, and then select “Yes”.



6. Select “Yes” to format the USB flash drive and continue.



7. Recovery USB Flash created completely



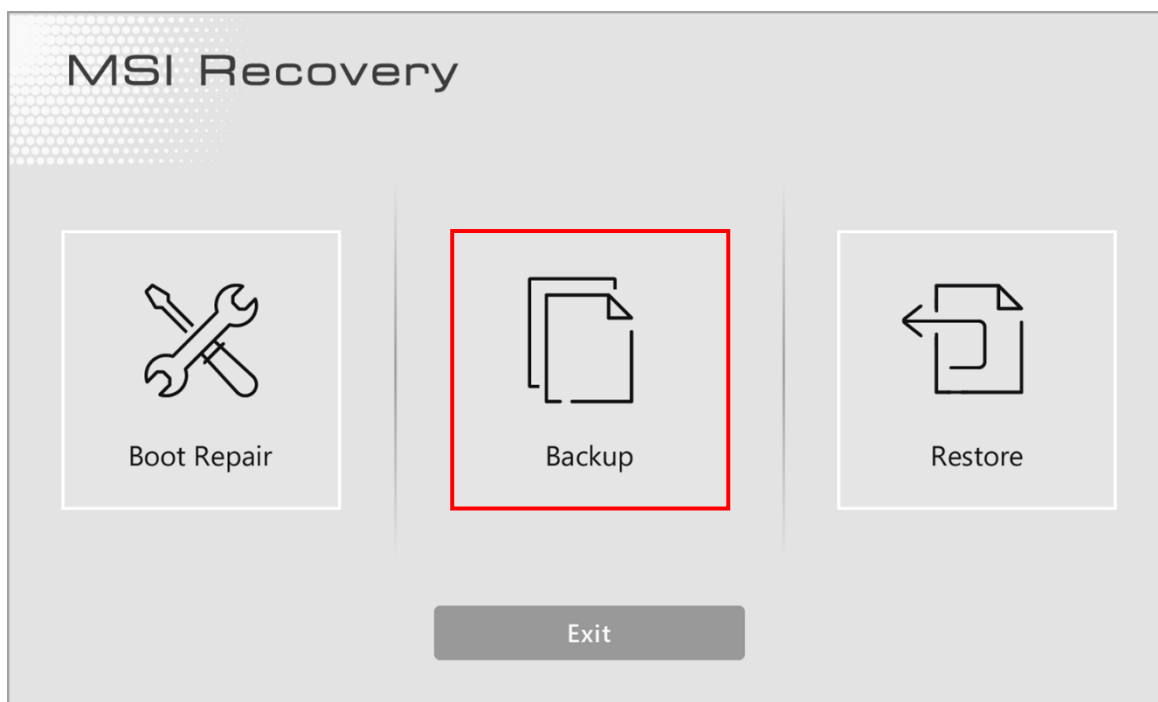
Note: MSI Image Backup creates a recovery media that can be used to restore the laptop back to factory defaults.

- Customize Image Backup

Before Starting:

- Prepare the MSI Recovery USB Flash ([MSI Image Backup](#)).
- Prepare a **64GB** or larger USB flash drive.
- Keep the AC adapter plugged during the whole recovery process.

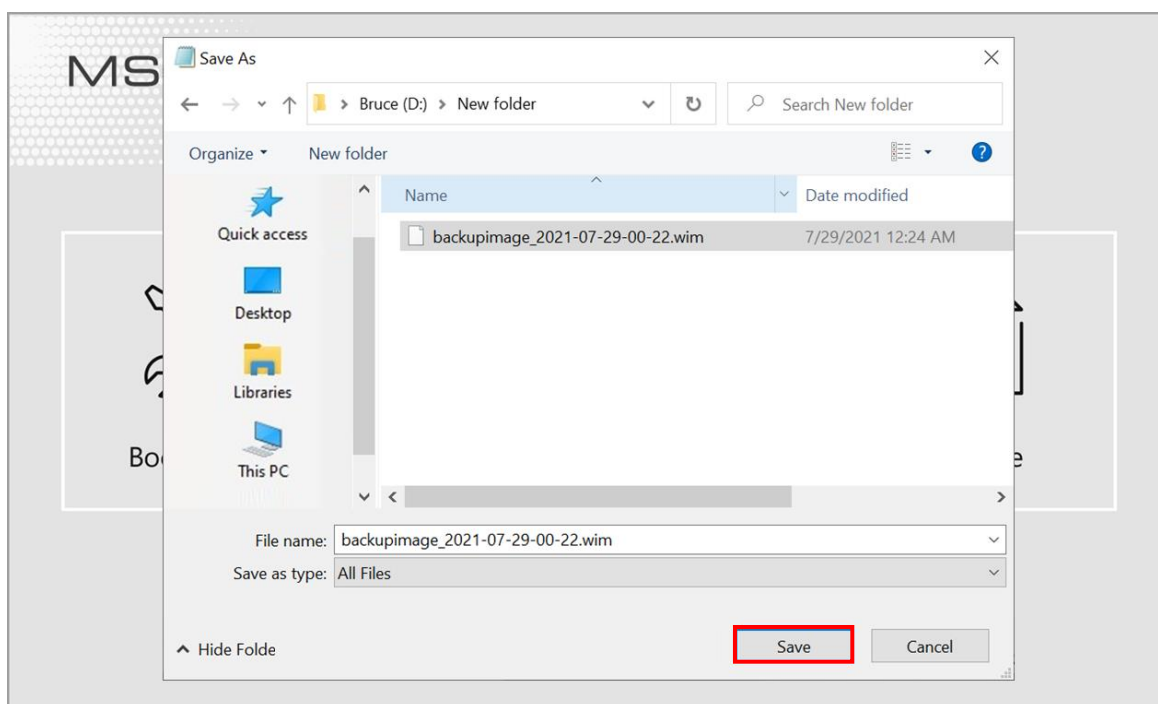
1. Go to MSI Center Pro > System Analysis > MSI Recovery.
2. Select Start.
3. Click “Yes” to restart and enter WinPE mode.
4. Insert MSI Recovery USB Flash and a USB flash drive with the capacity required, then select “Backup” in WinPE menu.



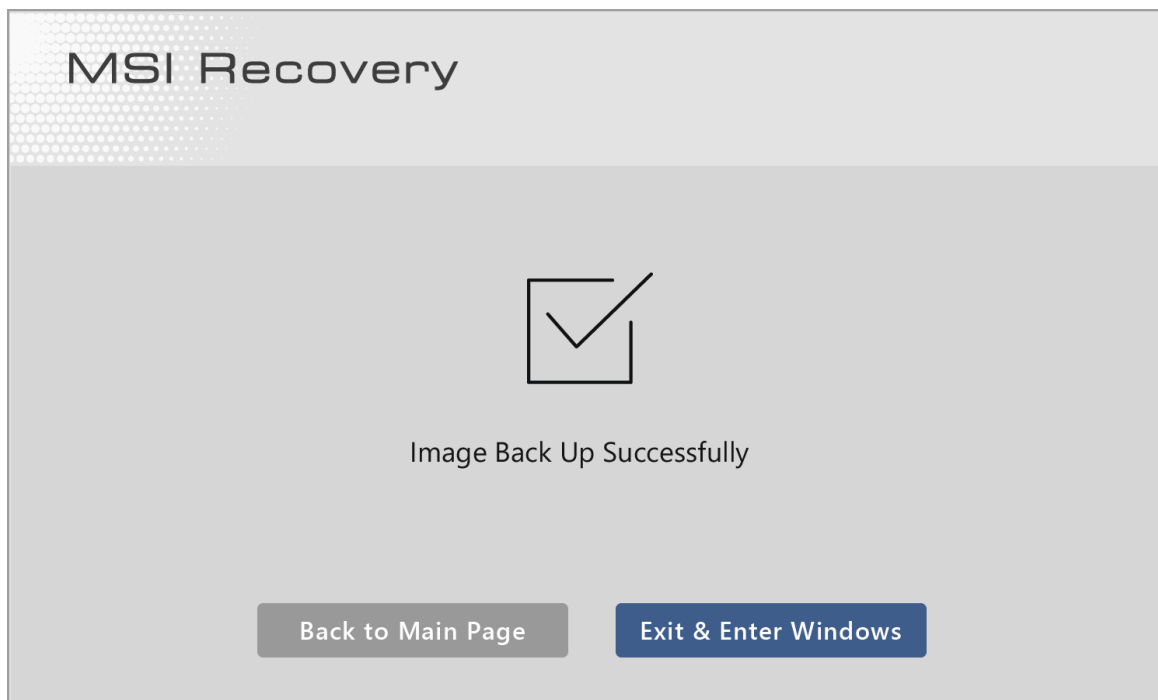
5. Select “Customize Image Backup”.



6. Save the customized backup image (.wim) in the desired path.



7. Customized backup image created completely



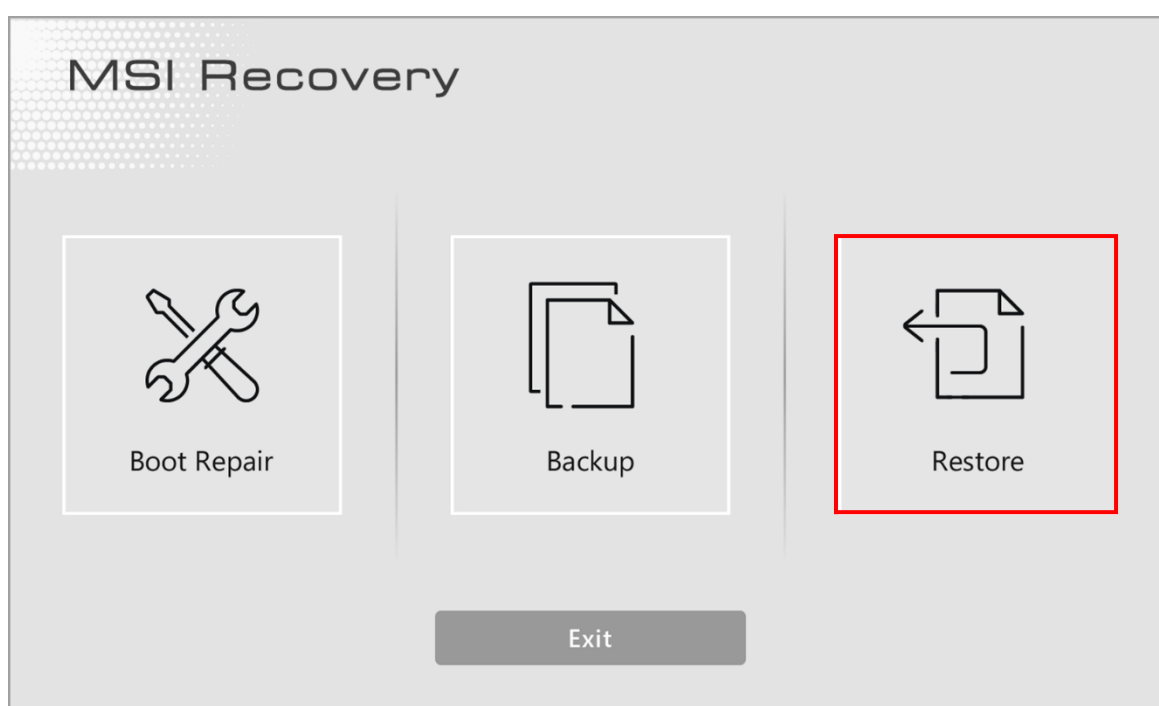
How to restore the system by recovery disk?

- MSI Image Restore

Before Starting:

- Prepare the MSI Recovery USB Flash ([MSI Image Backup](#)).
- Keep the AC adapter plugged during the whole recovery process.

1. Insert the MSI Recovery USB Flash into your computer.
2. Restart the computer.
3. Press the [F11] hotkey on the keyboard while the computer is rebooting.
4. Select to boot from the USB flash drive, and press [Enter] to enter WinPE mode.
5. Select "Restore" in WinPE menu.



Note: MSI Image Restore will return the laptop back to factory defaults and will not keep any changes made to the system.

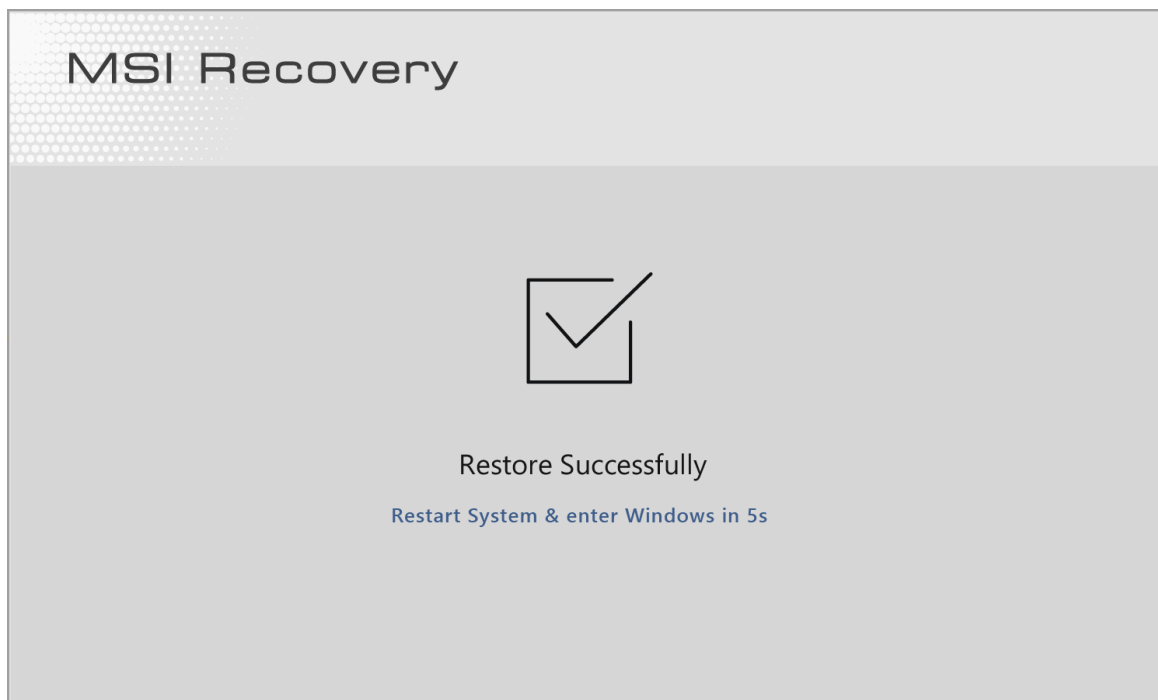
6. Select "MSI Image Restore".



7. The system recovery process will format the hard disk drive; make sure that the important data has been backed up before continuing the process.



8. When the recovery process is completed, the system will reboot automatically.

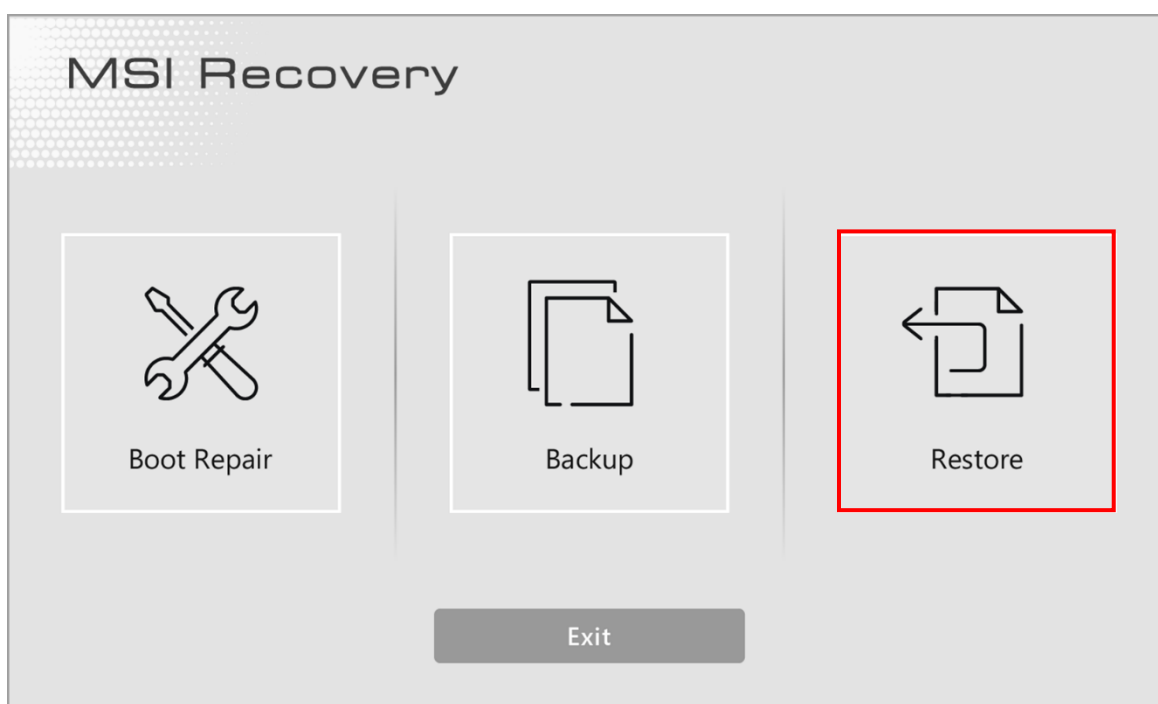


- Customize Image Restore

Before Starting:

- Prepare the MSI Recovery USB Flash ([MSI Image Backup](#)).
- Prepare the customized backup image ([Customize Image Backup](#)).
- Keep the AC adapter plugged during the whole recovery process.

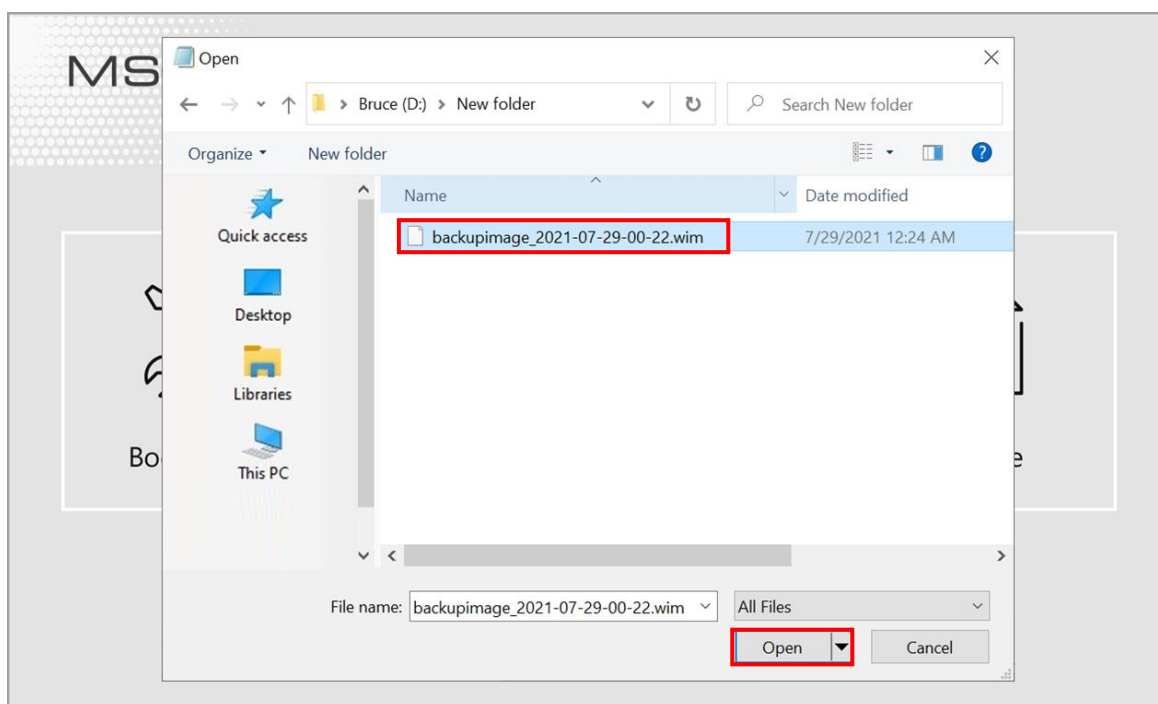
1. Insert the MSI Recovery USB Flash into your computer.
2. Restart the computer.
3. Press the [F11] hotkey on the keyboard while the computer is rebooting.
4. Select to boot from the USB flash drive, and press [Enter] to enter WinPE mode.
5. Insert the flash drive with the customized backup image, then select “Restore” in WinPE menu.



6. Select “Customize Image Restore”.



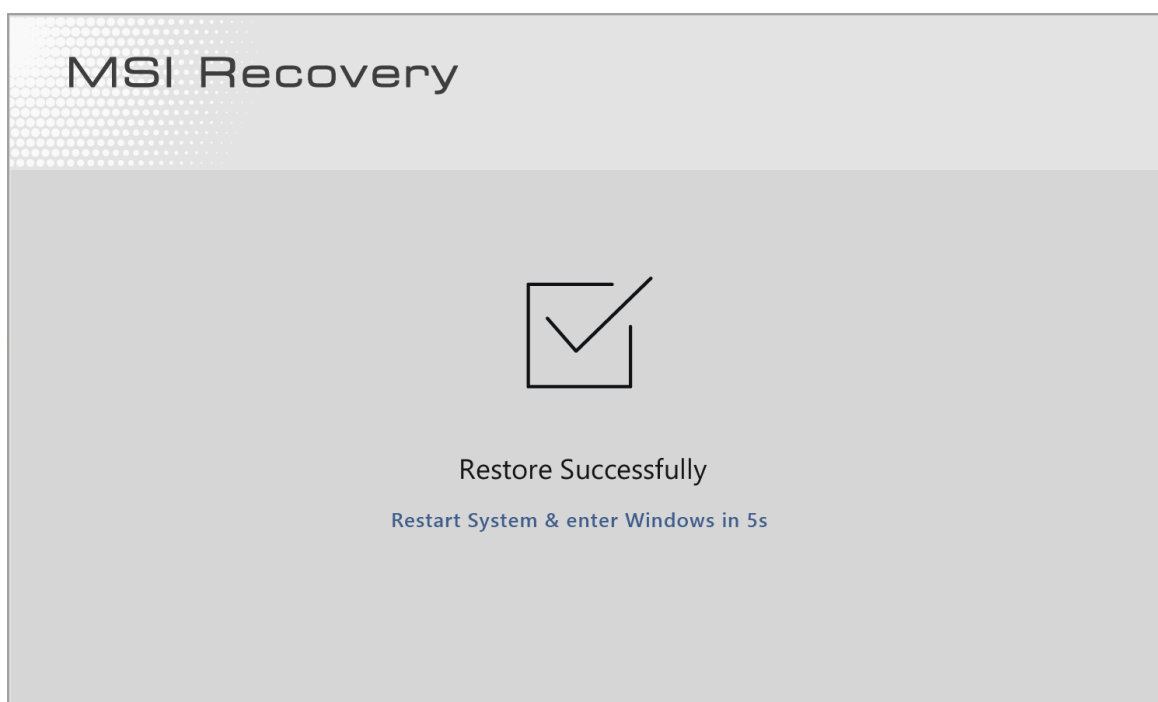
7. Select the customized backup image and click on “Open”.



8. The system recovery process will format the hard disk drive; make sure that the important data has been backed up before continuing the process.



9. When the recovery process is completed, the system will reboot automatically.



How to perform boot repair?

If the laptop doesn't start correctly or is stuck at automatic repair loop while startup, try to use "Boot Repair" to fix the bootup partition.

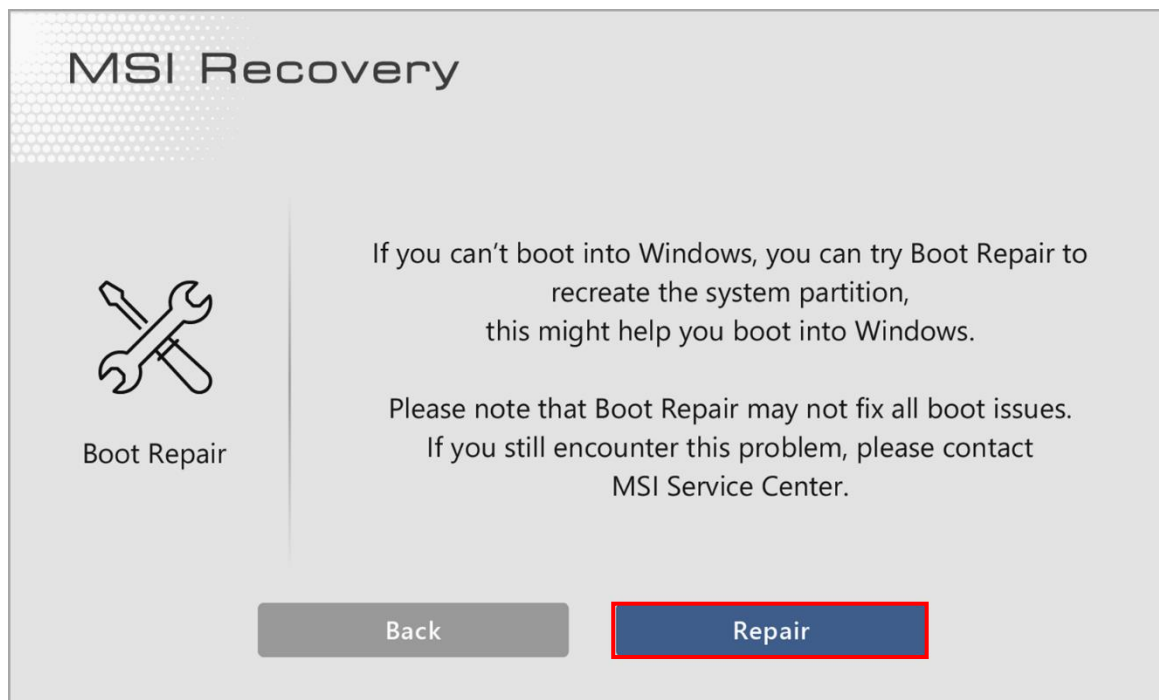
***Please note that "Boot Repair" may not fix all boot issues. If still encountering problems while booting up, please contact MSI Service Center.**

Before Starting:

- Prepare the MSI Recovery USB Flash ([MSI Image Backup](#)).
 - Keep the AC adapter plugged during the whole recovery process.
1. Insert the MSI Recovery USB Flash into your computer.
 2. Restart the computer.
 3. Press the [F11] hotkey on the keyboard while the computer is rebooting.
 4. Select to boot from the USB flash drive, and press [Enter] to enter WinPE mode.
 5. Select "Boot Repair" in WinPE menu.



6. Select "Repair" to continue the process.



7. When the repair process is completed, the system will reboot automatically.

