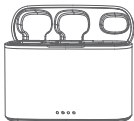


Thank you for purchasing this **NEEWER®** product!

Unleash the power of seamless recording with our intelligent wireless microphone. Experience professional-grade audio without the hassle of app installations – it's a simple plug-and-play solution. Tailored for a multitude of applications, from dynamic webcasting and engaging video vlog shooting to articulate program discussions, precise interview recordings, and effective video teaching.

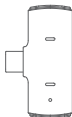
Package Contents



Charging case ×1



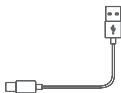
Transmitter (TX) ×2



Receiver (RX) ×4



Windshield ×2

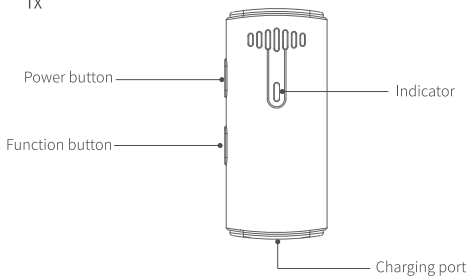


Charging cable ×1

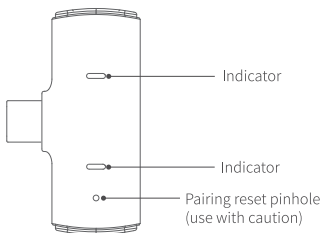


Fabric Storage Case ×1

TX



RX



Operation	Function/Status	Indicator
Press and hold the power button for 2s	Power on	Blue indicator flashes slowly
	Power off	Indicator goes off
Press the power button	Mute/unmute	Mute: red indicator lights on
Paired	N/A	Blue indicator lights on
Press the function button	Volume adjustment levels: 1-5	Green indicator flashes once when the volume is adjusted to another level and flashes three times when adjusted to the maximum level.
Press and hold the function button	Noise cancellation on/off	Noise cancellation on: green indicator lights on
Low battery alert	N/A	The red light flashes quickly
Low battery power off		Red indicator goes off
External power source	Charge while powered on/off	Red indicator dims and lights up alternatively
Full charge	Charge while powered on	Indicator returns to primary status
	Charge while powered off	Red indicator goes off

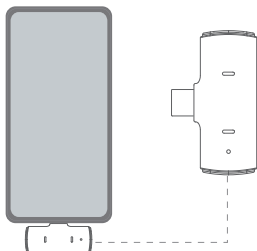
1. In case of conflicting indicators, the priority order is as follows: volume adjustment takes precedence over low battery indication, which in turn takes precedence over mute status, followed by charging status, and then noise cancellation, with the operation status having the lowest priority.
2. The noise cancellation feature cannot be activated or deactivated when the device is in pairing mode or mute mode.
3. If noise cancellation is activated while the device is charging or the battery is low, the noise cancellation indicator will illuminate for 3 seconds before reverting to the charging or low battery indicator state.
4. The mute status is not saved and will be disabled after the device is rebooted or reconnected.

5. The noise cancellation setting will persist even after the device is rebooted or reconnected.
6. When the transmitter is off, enter pairing mode by pressing and holding the power button and the function button simultaneously for 6 seconds.

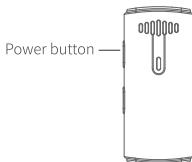
Instructions for use

Step 1: Plug the receiver into the USB-C port of your smartphone.

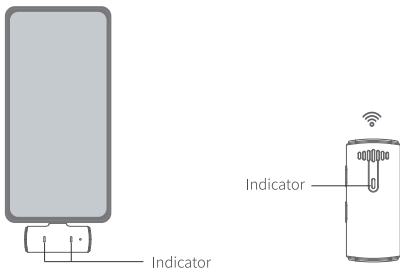
Note: For OPPO/VIVO/IQOO/Realme smartphones, please search for "OTG" in the Settings and enable "OTG Power Supply" before connecting the RX receiver.



Step 2: To turn the receiver on, press and hold its power button or directly remove it from the charging case. A flashing indicator means the receiver is turned on.

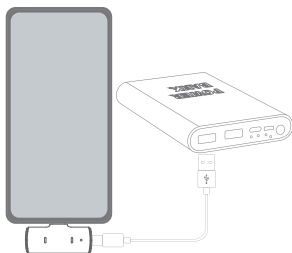


Step 3: When the transmitter indicator is on, open any video recording or live streaming app on your smartphone to start recording.



Note:

When the smartphone is running out of battery, you can charge it through the receiver's port.



Function/Status	Operation	Indicator
Unpaired	Waiting to be paired	Blue indicator 1/indicator 2 flash slowly
Paired	N/A	Corresponding blue indicator
TX mute	TX1 or TX2 is muted	Corresponding red indicator lights on
Noise cancellation	Noise cancellation is enabled on TX	Green indicator 1/indicator 2 light on
Pairing mode	Press and hold the pairing reset pinhole for 3s	Blue indicator 1/indicator 2 flash quickly

1. When noise cancellation is turned on/off on one TX, it will simultaneously be turned on/off on the other TX.
2. RX only displays its own pairing status, not the one of TX. After the RX pairing is reset, the blue indicator will flash quickly for 2 minutes. If RX is not paired within this period, the blue indicator will start flashing slowly, yet RX is still waiting to be paired.

Battery warning

1. Do not attempt to detach, modify, and repair the battery by yourself. Any unauthorized operation may cause battery leakage, overheating, burning, and other hazards.
2. Be sure to use the provided or certified chargers to prevent overcharging and shortcuts.
3. If unusual charging speed and indicator flashing occur, please stop charging and contact our customer service immediately.
4. Keep away from inflammable and explosive items.

1. Please keep this precision electronic device away from water. If it gets wet, turn off the device, shake off the water, and seek assistance from a professional technician.
2. Charge the battery every three months to keep in optimum condition and to protect the battery cells.
3. Do not expose the battery to sunlight, fire, or heat.
4. Keep the transmitter and receiver facing each other to maintain a strong signal.

Specifications

Sampling rate	48kHz 24bit
Frequency response	20Hz~20kHz
Transmission distance	Front:150m, Rear:20m
Noise cancellation	Supported
Sound latency	24ms
Signal to noise ratio	>70dB
Sensitivity	-36±2dB
Pickup pattern	Omnidirectional
Sound pressure level	>120 dBSPL