

## How to set up GlucoRx Voyager for Windows

- 1 Navigate to <https://www.glucorx.co.uk/our-services/software/> and select the Voyager Download button.

### Glucorx Voyager For Windows

Glucorx Voyager for Windows allows you to collect your readings from a Microsoft Windows devices for analysis via the Glucorx Voyager online portal or the Voyager app for smart phones.

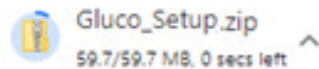
Glucorx Voyager for Windows is compatible with the following devices:

- Glucorx Nexus Blood Glucose Meter
- Glucorx Nexus Mini Ultra Blood Glucose Meter
- Glucorx HCT Meter (Glucose only)
- Glucorx Q Blood Glucose Meter
- Glucorx Nexus VOICE Blood Glucose Meter



Download Voyager  
For Windows

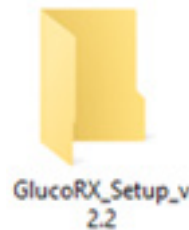
- 2 The download will start, progress will display in the bottom left corner of your browser.



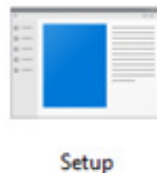
- 3 Double left click the Gluco\_Setup zip file.



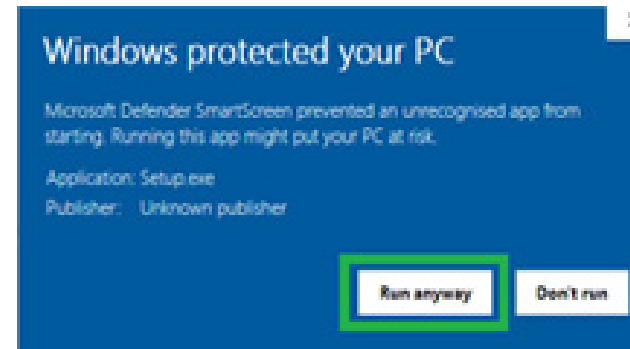
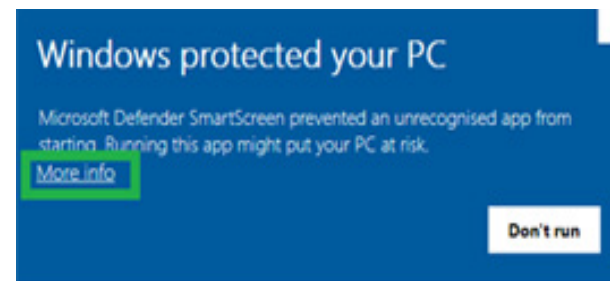
- 4 Double left click the Gluco\_Setup file.



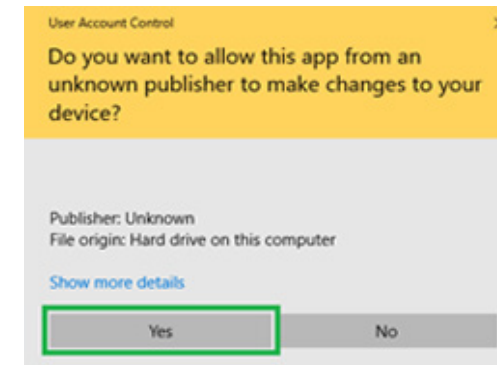
- 5 To start the installation, double left click the "Setup" file.



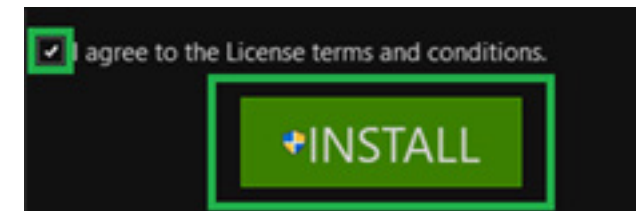
- 6 PLEASE NOTE  
If you see this pop up, click "More Info" then click "Run anyway"



- 7 If this message shows, select "Yes".



- 8 Tick the "I agree to the License terms and conditions". Select "Install".



# Glucorx VOYAGER

## How to import readings from USB Meters to Voyager for Windows

- 1 Navigate to <https://www.glucorx.co.uk/our-services/software/> and select the Voyager Download button.

**CREATE ACCOUNT**

First Name\*

Last Name\*

☐ Male ☒ Female

Select a date 15

Email\*

Password\*

Confirm Password\*

Thank you for signing up for GlucoRX. Please click on the following button to verify your email and get started.



Best Regards,  
GlucoRX Support Team

- 2 To login, Input your email address and password.

Welcome To GlucoRx

Login

Email / User ID

Password

Forget Password?

SUBMIT

Create Account

- 3 The user is prompted to input their Low and high blood glucose limits. This is personal to each person. If you are unsure what your limits are you should speak with your healthcare professional. (This is only required on the user's first login)

- 4 Plug your meter into the computer using a USB cable.

- 5 When "USB or PC" is displayed on the screen, select the meter name from the devices dropdown and select "Connect".

- 6 New readings will automatically be imported.

- 7 The GlucoRx Voyager portal will open in a web browser.

Thresholds	
Units of Measure	mmol
Low Limit	4.1
High Limit	9.5
High Alarm	10.5
Low Alarm	3.5



- 7 To log into the portal without importing any results, open GlucoRx.exe and click the "visit Portal" button.

You can also login from any web browser by going to [www.grxvoyager.com](http://www.grxvoyager.com)