

2019

Dealer Awards

How Can We Earn Your Business?

2019 Merchandise Catalog

Now with Over 100 **BRAND NEW** Items!



PREFERRED PUMP

Choose from Nearly 400 Quality Items!





**Preferred Pump Presents the Dealer Awards Merchandise Catalog,
an Incredible Collection of Nearly 400 High Quality Items.
This is Our Way of Showing Our Appreciation for Your Business!**

***It's Easy to Redeem Your Points for Great Merchandise!
Here's How it's Done:***

- 1. Wait for Your Certificate in January.** If you registered for the Dealer Awards Program in 2019 and you selected the Merchandise Catalog as one of your rewards, you will receive an Awards Certificate in late January, 2020. This form will list the number of points you have available to spend on Dealer Awards merchandise. These will be the points you have earned from January 1, 2019 to December 31, 2019. Contact your local branch with any questions regarding your Awards Certificate.
- 2. Fill Out the Certificate with the Items You Want.** You can use this catalog to search for merchandise based on the points you have available. The number of points an item is worth is listed along with the item number of the merchandise, the manufacturer's model number, the manufacturer's name, and a brief description. Just select the items you want by filling out the Awards Certificate as you go.
- 3. Buy Points If You Don't Have Enough.** Did you find something you want but need a few more points to buy it? That's no problem! You can buy as many points as you need at a rate of just **\$15.00 per point**. Please remember to include a check with your order for the appropriate amount, made out to "Hal Kaufman Company". Make sure you send your Awards Certificate with the check to this address:

**Hal Kaufman Company
299 S. Walnut Bend • Suite 201
Cordova, TN 38018
Direct: (901) 458-3143 • Fax: (901) 324-2185
Email Inquiries: awards@hkcpromotions.com**

Submit Your Order. Visit www.preferredpump.com/merchandise and submit your order online or fax to the fax number above. If you are submitting a check with your order, please follow the instructions in step 3.

Your merchandise order will be shipped to you directly from the various manufacturers. This should take about 3-5 weeks. Longer or shorter shipping times are possible, depending on the inventory that the manufacturer has on hand at the time you place your order. Of course, there is no freight charge. . . and no sales tax!

Important Points to Remember:

- If you have any questions, call Hal Kaufman Company at (901) 458-3143 directly. Hal Kaufman Company handles ALL the ordering and shipping arrangements for your Dealer Awards merchandise.
- **Your 2019 points will expire on April 30th, 2020.**



E1A. Tile Mate Slim Combo Trackers (4-Pack): Find lost items with this combo 4-pack. Attach a Tile Mate to keys, devices and more. Use the free Tile app to locate items that have gone missing. This pack works with Google Assistant and Amazon Alexa for additional finding capability. 12 points



E1B. Fujifilm Instax Mini 9 Instant Camera: Brightness dial lets you find the optimal lighting to take the best photo, and its high-key mode creates bright but soft portraits. This camera has an improved viewfinder that provides better visibility and clarity to help you frame a shot. Comes with film. 12 points



E1C. LG PK3 Portable Bluetooth Speaker: With a 12-hour charge time, this speaker provides dynamic sound and rich bass. Thanks to its Meridian Audio technology, you can bring the party with you. The IPX-7 water resistance lets you go anywhere, rain or shine. 12 points



E1D. Midland Handheld Pair of Walkie Talkies: This pair of GMRS radios features a 36-mile range, JIS4 waterproof protection, voice-privacy scramble and dual-watch monitors. 12 points



E1E. Fire TV Stick 4K Bundle with Echo Dot: This bundle includes a Fire TV Stick 4K and an all-new Echo Dot. Pair to get hands-free voice control of your Fire TV with Alexa, or ask Alexa to play music, read the news, check the weather and much more! 12 points



E1F. iCOMFORT Neck and Shoulder Massager: Enjoy an invigorating massage with the touch of a button. Featuring a soothing heat function, this high-performance kneading massager provides a well-balanced treatment for shoulders, back or legs. 12 points



E1G. LG Blu-Ray Player: Enjoy TV shows, movies and more with this Blu-ray player, which features built-in Wi-Fi® for access to Netflix, YouTube, Hulu Plus and other content. Blu-ray disc and DVD playback in up to 1080p resolution enables a high-definition experience. 12 points



E1H. Amazon Fire Kids Edition Tablet: Let your little one explore apps, read books and watch videos with this kids Kindle Fire. A 7" touch-screen display offers easy navigation, and the child-proof case protects this tablet against damage from accidental drops. Featuring front and rear cameras, it has never been easier to take family photos and videos. 12 points



E1I. 12" Digital Picture Frame: View hi-resolution pictures, listen to music and watch home videos easily on the 12" TFT true color LCD at 800 x 600 resolution. Simply insert your camera or camcorder's SD / SDHC card or USB drive directly into the frame. Pictures will automatically start in a slideshow mode. 12 points



E2A. Bose® SoundSport® Wireless Headphones:

With no wires in the way, Bose® SoundSport® wireless headphones keep you moving with powerful audio and earbuds that stay secure and comfortable. They're also sweat and weather-resistant with a battery life of up to 6 hours per charge. 14 points



E2B. LG PK7 Portable Bluetooth Speaker:

Party all night with this portable Bluetooth speaker. It uses Meridian Audio technology and dual tweeters for excellent sound quality while the 22 hours of playback time keep you dancing. Get the perfect celebratory atmosphere with the LED multicolor mood lighting. 14 points



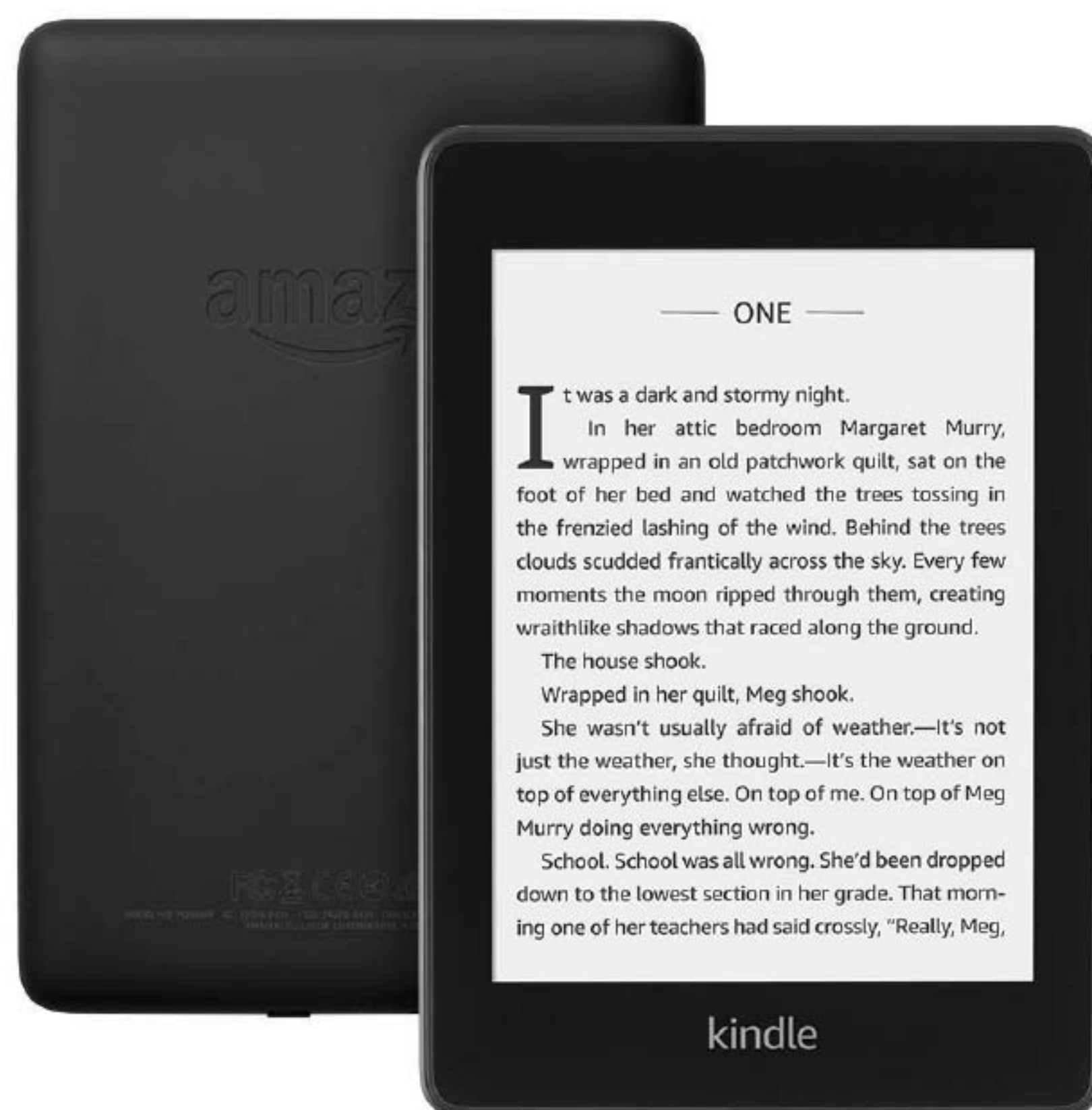
E2C. Fitbit Charge 3 Activity Tracker:

Get better rest with this fitness tracker. It is water-resistant up to 50m, so you can monitor swim distance and pace, and it provides access to smartphone apps for receiving event notifications and staying up-to-date. This black Fitbit Charge 3 fitness tracker feels lightweight for all-day comfort. 15 points



E2D. Ring Wi-Fi Smart Video Doorbell, Satin Nickel:

Find out who's at your door, even when you're away from home, using the Ring app on your iOS or Android device to interact with visitors, receive alerts and review footage. 15 points



E2E. Kindle Paperwhite E-Reader:

The thinnest, lightest Kindle Paperwhite yet, with a flush-front design and 300 ppi, glare-free display that reads like real paper even in bright sunlight. Now waterproof with 8 GB of storage. A single battery charge lasts weeks, not hours, and the built-in adjustable light lets you read indoors and outdoors, day and night. 16 points



E2F. Apple TV 32GB:

Enjoy your favorite content from apps such as Netflix, Hulu, iTunes, and more, all on the new Apple TV. Experience big, exciting games as well as apps that turn your living room into a fitness studio, a classroom, and more. 16 points



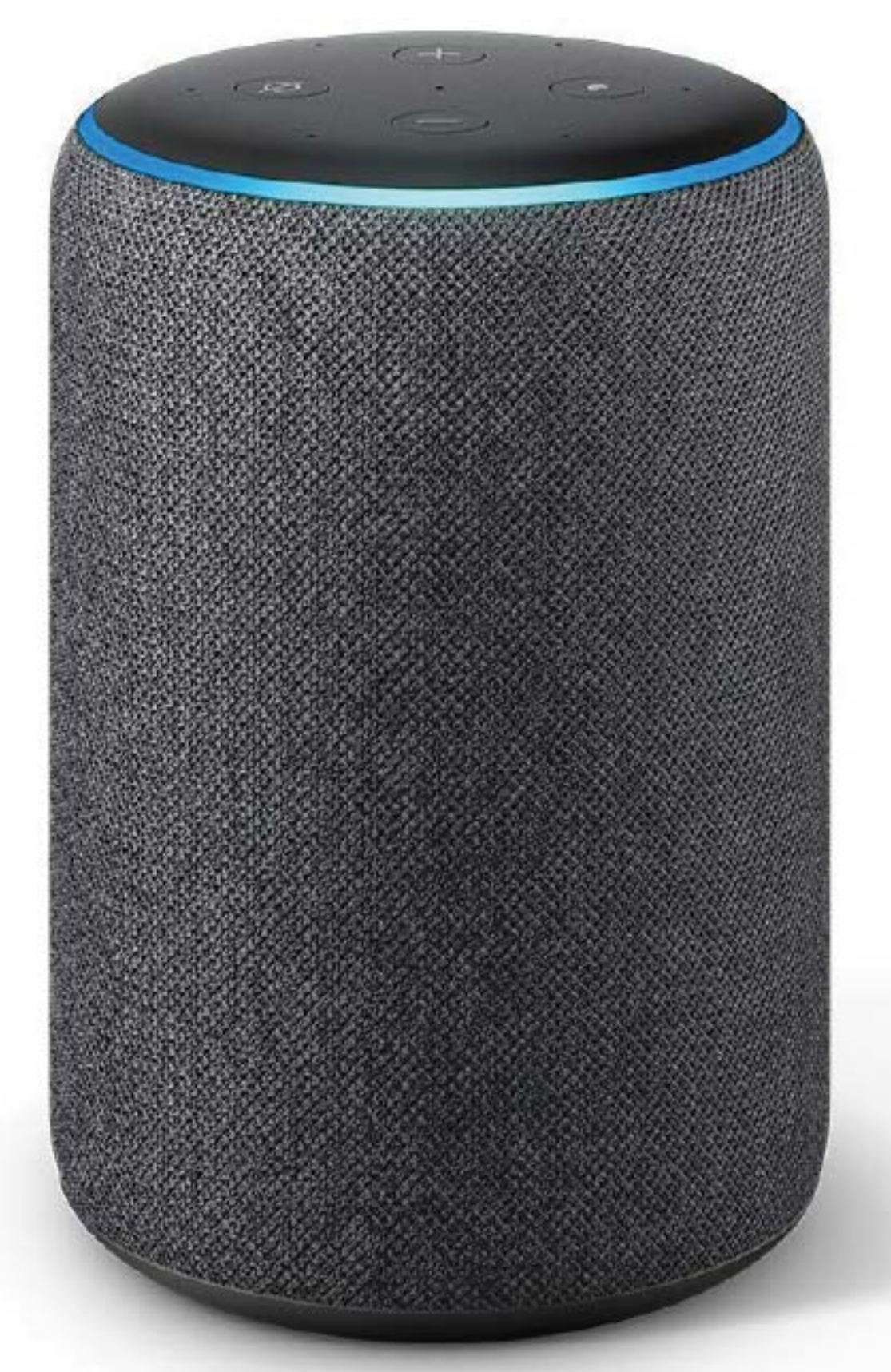
E2G. Brother Work Smart Color Inkjet All-In-One Printer:

This compact color inkjet all-in-one makes it easy to connect. A wireless assistant offers virtually effortless wireless setup. Print from nearly any mobile device. User friendly features include a 2.7" color touchscreen display. 17 points



E2H. Bose® SoundLink® Mini Bluetooth® Speaker II:

Full sound with dramatically deeper lows than you'd expect. It is wireless and ultra-compact, so it's easy to take Bose® sound anywhere you go. 18 points



E2I. Amazon Echo Hands-Free Speaker:

Amazon Echo, also known as Alexa, is a voice command device with functions including question answering, playing music and controlling smart devices. 18 points

**E3A. Bose® Frames Alto:**

With its classic angular shape and commanding lenses, Bose® Frames Alto remixes the most iconic sunglass silhouette with Bose sound. It's a new way to listen. One that leaves you free to hear and interact with the world around you, all while discreetly listening to music. 19 points

**E3B. iCOMFORT Foot Massager:**

Featuring kneading discs, this massager is designed to firmly massage fatigued feet. It even has infrared heat to keep your feet nice and warm. It includes a heel massage function and an airbag accessory for calf massage. 20 points

**E3C. Bose® SoundSport® Free Wireless Headphones, Black:**

Demanding workouts demand SoundSport® Free wireless headphones. They're completely free of wires, so you'll enjoy complete freedom of movement. They're sweat and weather resistant, too. Bose® StayHear®+ Sport tips are designed to stay secure and comfortable all workout long. And the earbuds are packed full of technology that makes your music so clear and powerful, you'll push past your limits. 20 points

**E3D. Garmin DriveSmart:**

GPS navigator provides driver alerts to encourage safer driving and increase situational awareness. Receive alerts for nearby red light and speed cameras, and be prepared for sudden halts in traffic with upcoming traffic jam alerts. 21 points

**E3E. Bose® Solo 5 TV Sound System:**

A 1-piece soundbar that brings noticeably better sound to all your favorite TV programs. This soundbar is so versatile you can place it almost anywhere. And with Bluetooth® connectivity, you can stream music wirelessly. 21 points

**E3F. Bose® Noise-Masking Sleepbuds™:**

Snoring partners, traffic and other noises keeping you awake? Bose® Noise-Masking Sleepbuds™ are engineered to help you get the rest you deserve with features like pre-loaded soothing sounds, a comfortable fit, rechargeable batteries and wake-up alarms. 23 points

**E3G. Human Touch® iJoy® Massage Anywhere™ Pillow:**

A powerful, portable solution for the perfect massage anytime, this pillow features powerful FlexGlide® orbital massage along with three professionally designed, invigorating auto-massage programs. 23 points

**E3H. Echo Show Speaker with Screen:**

This new virtual assistant features a vibrant 10.1" HD screen, built-in smart home hub and improved speakers. Just ask Alexa to show you a recipe, watch live TV and sports with Hulu, make video calls or see who's at the front door. 21 points

**E3I. Commander Video Game Chair:**

Multiple connections for video systems and music devices are built into this adult size video chair. Chair swivels and tilts. Polyvinyl cover is stain-resistant. 24 points

**E4A. Sony Full HD 60p**

Camcorder: Create clearer, more shareable memories with Optical SteadyShot™ image stabilization. Your videos will thrive with full HD/60p resolution, a 26.8mm wide angle ZEISS® lens and 30x optical / 60x clear image zoom. You can share using the built-in Wi-Fi® or even broadcast live from your camcorder. 27 points

**E4B. Bose® QuietComfort® 35**

Wireless Headphones: Engineered with world-class noise cancellation that makes quiet sound quieter and music sound better. Free yourself from wires and connect easily to your devices with Bluetooth® and NFC pairing. And enjoy up to 20 hours of wireless listening per battery charge. 29 points

**E4C. Garmin Forerunner GPS Running Watch:**

Be a better athlete today than you were yesterday using this GPS running watch with multi-sport functions. This watch features heart rate monitoring, music controls, social media sharing and a comfortable silicone band. 30 points

**E4D. Beats by Dr. Dre Solo3 Wireless Headphones:**

With up to 40 hours of battery life and Fast Fuel, a 5-minute charge gives you 3 hours of playback. Enjoy award-winning Beats sound with Class 1 Bluetooth® wireless listening freedom. Email or call for more color choices. 300 points

**E4E. Samsung 3.1-Channel Soundbar System:**

7" wireless subwoofer in black featuring Dolby Digital technology. Sound modes let you set your audio system according to what you're watching, and 6 integrated speakers create an immersive experience. 30 points

**E4F. LG 43" Class LED 1080p**

Smart HDTV: Enjoy optimized viewing with the Full HD clarity of this LED TV. Tone mapping technology delivers enhanced colors and luminance, and the Virtual Surround Plus feature recreates sounds with lifelike quality. The HDMI ports and single cable feature of this TV provide quick connectivity to audio and video devices. 30 points

**E4G. Nintendo Switch 32GB Console Gaming Package:**

Show off your personality when playing favorite Switch video games with this neon Nintendo Joy-Con controller. The small size lets you cradle it in your hand for maximum control, and the ergonomically designed buttons and analog stick reduce fatigue. Package includes console and 1 popular game. 33 points

**E4H. LG Sound Bar with Wireless**

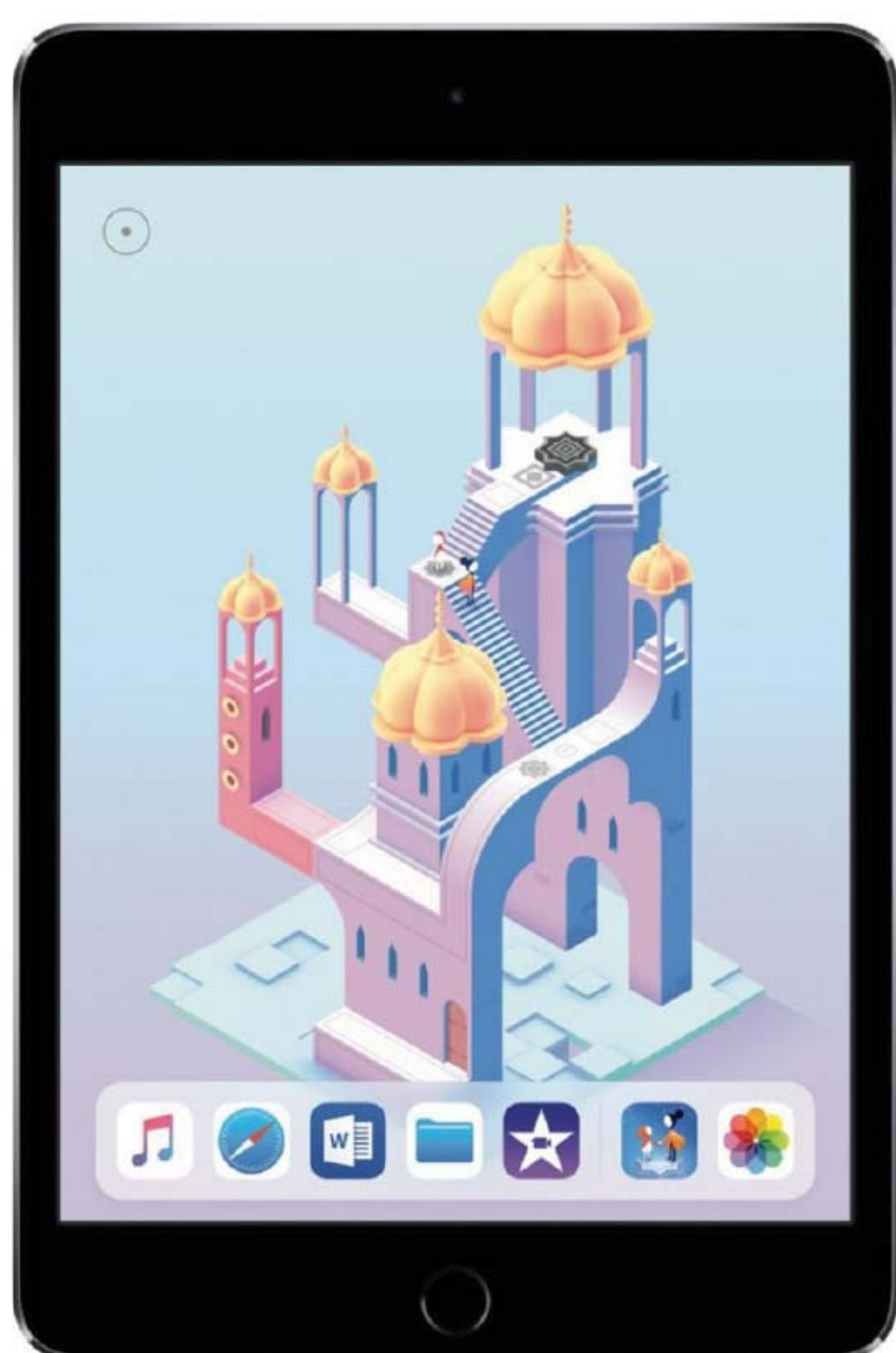
Subwoofer: Features Bluetooth® streaming as well as adaptive sound control and TV remote compatibility. 33 points

**E4I. Oculus Rift + Touch Virtual Reality Headset Bundle:**

The comfortable headset features adjustable straps and balanced weight, so you can game or watch your favorite movies for hours on end. The included touch controllers with this gaming bundle are ergonomically designed for easy and immersive interaction. 34 points



E5A. Bose® Home Speaker: This Bose® home speaker delivers wall-to-wall stereo sound from a single speaker. Built-in voice control from Alexa gives you access to songs, playlists and more. 35 points



E5C. Apple iPad Mini 4, 128 GB: Featuring a gorgeous 7.9" Retina display, this tablet is only 6.1mm thin and weighs just 0.65 lbs, making it small enough to hold in one hand. It has a powerful A8 chip with 64 bit desktop-class architecture, advanced iSight and FaceTime HD cameras, Wi-Fi and LTE connectivity, iCloud, the breakthrough Touch ID fingerprint sensor and up to 10 hours of battery life. 39 points



E5E. Samsung 50" LED 2160p Smart 4K Ultra HD TV: Enjoy movies and games in HD with this 50" Samsung TV. Motion Rate 120 technology maximizes the refresh rate to minimize blur in fast-moving scenes, and game mode provides minimum lag, so you don't fall behind while playing. This TV is Wi-Fi-enabled to connect to your network, so you can watch online content. 46 points



E5B. Acer 3D Ready DLP Projector:

This projector boasts outstanding performance with rich colors, superb clarity, excellent 3D entertainment and a true 24p frame rate for a cinema-like experience. A long-lasting lamp life and practical lamp design keep maintenance costs low. Make your presentations more compelling and entertainment more exciting with high brightness, high contrast and DLP 3D Ready. 37 points



E5D. Brother High-Speed Laser Multi-Function Copier/Duplex/ Networking: High-speed laser multi-function copier with networking. Ideal for businesses or small work groups, it combines reliable monochrome printing and copying, color scanning, 2-sided printing and a 300-sheet paper capacity. 40 points



E5F. Apple Watch Nike+ Series 4 (GPS + Cellular):

Track your runs with GPS and altimeter. Pair your watch wirelessly with compatible gym equipment. Apple Watch Nike+ is swimproof, so you can take a post-run dip in the pool. And built-in cellular lets you stream your favorite music and get phone calls, messages and notifications even when you don't have your phone. 47 points



E6A. LG 55" LED 2160p Smart 4K UHD TV with HDR: Stream your favorite shows and movies from Hulu and Netflix with this LG 4K HDR smart UHD TV. The television features a powerful quad-core processor to deliver lifelike 4K pictures, minimize video noise and improve image sharpness, and the webOS makes it easy to stream shows from Hulu and Netflix with just a simple click. 48 points



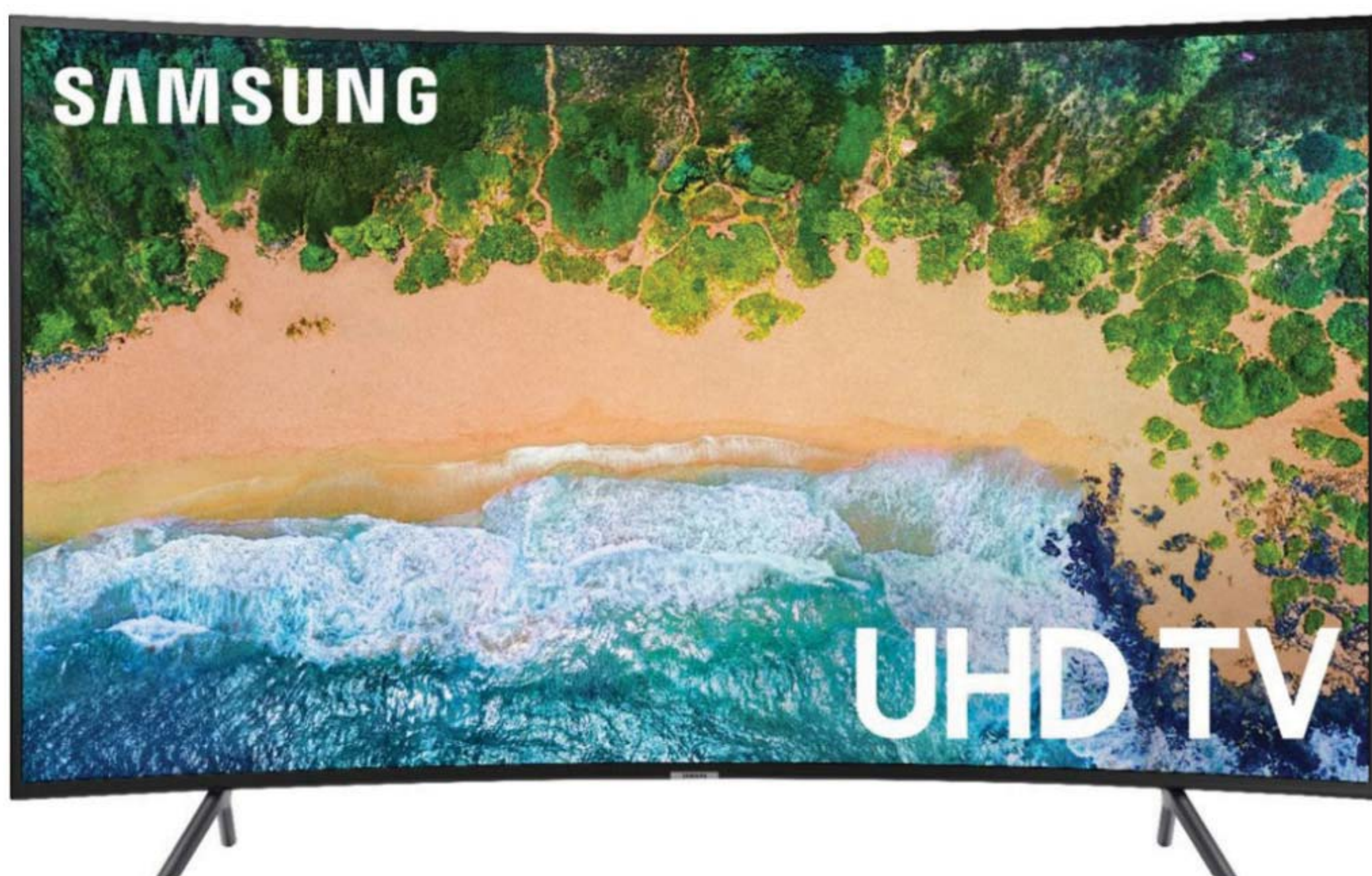
E6B. Sony PlayStation 4 1 TB Console Gaming Package: Compatible with the latest game titles to provide hours of entertainment, it lets you access PlayStation Vue, so you can enjoy your favorite shows. This Sony PlayStation 4 has a 1 TB hard drive, so you can store plenty of gaming files. Includes (1) PS4 1 TB Console, (2) PS4 Control Pads and (2) PS4 games. 49 points



E6C. Hewlett Packard Essential 15.6" Laptop Bundle: This mobile notebook with AMD processor features 4 GB memory, 500 GB hard drive and multimedia tools. Includes wireless mouse and HP backpack. 49 points



E6D. Bose® Wave® SoundTouch® Music System IV: This music system lets you easily enjoy all your music. Use it to stream music services, internet radio stations and your personal playlists. There's also a CD player and AM/FM tuner. 50 points



E6E. Samsung 55" LED Curved 2160p Smart 4K UHD TV: Enhance your gaming experience with this Samsung television. The UHD Engine optimizes video to produce four times the resolution of Full HD, and the integrated Dolby Digital Plus delivers realistic audio to fully immerse you in content. This TV has a slim bezel to maximize screen space and look great in your room. 56 points



E6F. GoPro Fusion 360-Degree Digital Camera: Capture your most exciting adventures with the GoPro Fusion camera. Voice command functions allow for hands-free filming for selfie-style video while access to the GoPro app lets you preview footage and stitch video, all from your smartphone. 57 points



E7A. Microsoft Xbox One X 1 TB Console with 4K Ultra Blu-ray Gaming Package: Games play better on Xbox One X. With 40% more power than any other console, experience immersive true 4K gaming. Bundle includes: (1) Xbox One X console, (2) Xbox One X controls and (2) Xbox One X games. 60 points



E7C. Microsoft Surface Pro 12.3" Touch Screen Intel Core M3 4 GB Memory 128 GB SSD With Keyboard: This ultra-light and versatile Surface Pro will help you stay productive on the go. 63 points



E7E. Apple 11" iPad Pro with Wi-Fi, 256 GB: This tablet features an advanced Liquid Retina display that goes edge to edge. With face ID, you can securely unlock, log in to apps and pay with just a glance. The A12X Bionic chip is faster than many PC laptops and easily runs pro apps with all-day battery life. 82 points

E7D. Samsung 55" LED 2160p Smart 4K UHD TV with HDR: Enjoy smart browsing with this smart TV. Its Bixby Voice technology lets you browse streaming options via voice control, and its Motion Rate 240 lets you enjoy fast-paced scenes with crisp clarity. This Samsung smart TV combines HDR Plus and Supreme UHD dimming to deliver a stunningly vivid 4K display and finely tuned screen lighting. 79 points

E7F. Apple MacBook Air 13.3" Notebook:

This ultraportable notebook computer with a thin and lightweight design features 256 GB of flash storage rather than an old-fashioned hard drive. At 13.3" in size, the 16:9 display features a native resolution of 1440 x 900. The computer is powered by 1.6GHz Intel Core i5 processor and has 4 GB of RAM. 120 points



E7B. LG 49" LED 2160p Smart 4K UHD TV with HDR: Get lost in a lifelike picture while enjoying your favorite shows with this LG Smart TV. Its a7 Intelligent Processor delivers a stunning 4K image with improved contrast, so colors display accurately. This TV is compatible with Google Home and Amazon Alexa digital assistants that control its operation with voice commands. 60 points





E8A. LG 65" LED 2160p Smart 4K UHD TV with HDR: Enhance your viewing experience with this TV that features an Intelligent Processor that maximizes color, depth and sharpness to produce a more realistic picture. This LG LED television has Dolby Atmos to deliver theater-quality audio. 121 points



E8B. LG 75" 4K UHD TruMotion 240Hz HDR Smart LED TV: Features 4K Ultra HD picture clarity with the contrast, color, and detail of High Dynamic Range (HDR) for the most lifelike picture and an easy to use webOS 3.0 Smart platform. 121 points



E8C. Apple iMac 27" 5K Display: Enjoy meticulous detail on an unbelievable scale. The amazing Retina 5K display has 14.7 million pixels, so photographs look amazing, maps come alive, and text is incredibly sharp. With Apple iMac with Retina 5K display you'll have all the performance and speed you need. 180 points



E8D. Bose® Lifestyle® 600 Home Entertainment System: The Lifestyle® 600 home entertainment system immerses you in your music, movies and TV with more than just powerful sound. Sleek, compact Jewel Cube® speakers and a bass module deliver clarity and bass at all volume levels. 191 points



E8E. LG 86" 4K Super UHD TV: This TV delivers a billion rich colors and 4K clarity for a supremely cinematic experience. This webOS 3.5 smart TV brings together all of the most popular streaming video apps, including Netflix, Hulu and YouTube. 300 points



H9A. Cabela's Dura Mesh Elevated Pet Bed, Large:

Keep your dog off the ground with this elevated dog bed. Safe from moisture and harmful pests, your four-legged friend will rest easy. Breathable Dura Mesh allows for air circulation to keep your dog cool. Weight capacity: 120 lbs. Dimensions: 38½"(L) x 38½"(W) x 12"(H). 12 points



H9B. Conair Cordless/Rechargeable i-Stubble Ultimate Trimmer:

This trimmer features a unique floating contouring head to track the curves of your face for extra comfort and control and 15 settings visible with LCD display. 12 points



H9C. Ginsu Essential 14-Piece Knife Set:

This set includes every knife you need to prepare and serve large and complex meals. Includes: 8" chefs knife, 7" santoku knife, 5" boning knife, 8" slicer, 5" tomato knife, 3" paring knife, kitchen shears and (6) 4½" steak knives, all organized in a sleek black block. 12 points



H9D. All-Clad Hard Anodized Non-Stick 11" Square Grill Pan:

For healthy meals involving searing and browning, this pan allows the cook to make them without adding oil. Includes heavy-gauge, hard-anodized aluminum and a reinforced, non-stick system. 12 points



H9E. Krups Savoy Stainless Steel Coffee Machine: This full automatic 12-cup capacity coffee maker features a programmable digital clock, a pause and serve function and easy to read water filling measure. 12 points



H9F. Krups Four Slice Toaster:

This toaster with polished stainless sides and chrome plated top cover is great for all of your toasting, defrosting and reheating. Bagel settings and 6 levels of browning control. Removable crumb tray. 1,050 watts of power. 12 points



H9G. Elite-Gourmet Classic Electric Food Slicer:

Features aluminum die-cast exterior housing, stainless steel round blade with adjustable slicing. Slice a variety of foods from vegetables to meats. 12 points



H9H. All-Clad Immersion Blender:

This hand blender can quickly blend and puree a wide variety of foods with variable speeds. The 9¼" drive shaft is detachable and dishwasher safe. 12 points



H9I. NutriBullet 12-Piece High-Speed Blender/Mixer System:

Effortlessly pulverizes fruits, vegetables, shakes and more. Includes (1) power base, (1) tall cup, (2) short cups, (1) flat blade, (1) emulsifying blade, (2) re-sealable lids, (1) pocket nutritionist and (1) manual with recipes. 12 points



H10A. Omaha Steaks Ocean's Bounty Package: (2) 6 oz. wild salmon fillets, (2) 6 oz. yellowfin tuna steaks, (2) 6 oz. Icelandic cod fillets and (2) 6 oz. swordfish steaks. 12 points



H10D. Cuisinart Toaster Oven Broiler with Convection: This countertop convection toaster oven features industrial styling, four cooking options, including convection bake, and convenient keep-warm function make this multi-functional oven a valuable addition to any kitchen. 12 points



H10G. Elite-Gourmet 3 1/2-Quart Digital Air Fryer: Prepare healthier food using little to no oil, 6 quick menu functions allow you to quickly and easily select the foods you want to fry with adjustable time and temperature. 12 points



H10B. Omaha Steaks Package: (4) 8 oz. boneless New York strips and (4) 4 oz. individual New York cheesecakes. 12 points



H10E. 13-Gallon Touchless Trash Can-Stainless Steel/Black: Cover unwanted garbage odors with this automatic trash can. Up to 13 gallons of waste fit in the durable stainless steel receptacle, and the carbon filter keeps air around the can fresh. A touch-free sensor opens the large lid to keep germs off of hands. 12 points



H10H. Instant Pot 6-Quart 7-in-1 Multi-Use Programmable Pressure Cooker: This pressure cooker features 14 smart programs including slow cooker, rice cooker, steamer, sauté, yogurt maker and warmer. It prepares dishes up to 70% faster with the press of a button. 12 points



H10C. Dirt Devil Bagless Upright Vacuum Cleaner: Features an advanced filtration system that has you covered for heavy duty messes on all floor types. Tackle your stairs and any upholstery with the turbo tool and the 12' instant removable wand that helps you get to those hard-to-reach places. 12 points



H10F. Ultrasonic Aromatherapy Diffuser: This wood and ceramic decorative and functional diffuser features a remote control, a 20-hour run time, color changing lights and soothing sounds. It includes a 3-pack essential oil starter kit. 12 points



H10I. Mr. Heater Portable Buddy Heater: The handle folds for convenient storage. A ceramic burner and porcelain-coated reflectors spread heat faster. An easy-start button sets at your choice of a 4,000 or 9,000 BTU output. 12 points



H11A. Bulova Durant Clock (Mantel Chime): Featuring a solid wood case and walnut finish, decorative carved accents and a Westminster melody on the hour, this beautiful clock would be a welcome addition to any mantel. 12 points



H11B. Brother High-Speed Professional Label Printer: Print up to 93 standard address labels per minute at 300 DPI using this quick printer. It is compatible with Windows® and Mac® with convenient, drop-in rolls. No ink or toner needed. 12 points



H11C. Rowenta Turbo Silence 16" Pedestal Fan: Comes with an electronic control panel and a remote control to set 3 mid-to-high speed settings. Turbo boost for extra powerful airflow. 12 points



H11D. All-Clad 12 Quart Multi-Cooker with Lid: This large capacity set includes stainless steel colander and steamer basket inserts ideal for stovetop boiling and steaming. 12 points



H11E. Antique Gold Pedestal Bird Bath Feeder: Constructed of weather-resistant resin, the bird bath feeder will make a great addition to any backyard. 12 points



H11F. Krups Breakfast Bundle: Includes 10-cup coffee maker, 2-slice stainless steel toaster and fast touch coffee grinder that grinds beans for up to 12 cups of coffee. 12 points



H11G. 4 Pack of Yeti Rambler 30 oz Tumblers: Built to be virtually indestructible and keep your drink as cold (or hot) as science allows, this tumbler features 18/8 stainless steel construction, double-wall vacuum insulation and no sweat design. 13 points



H11H. Ginsu Chikara 12 Piece Cutlery Set: Includes: (1) 3 1/2" paring knife, (1) 5" utility knife, (1) 5" serrated utility knife, (1) 7" Santoku, (1) 8" chef's knife, (4) steak knives, shears, (1) honing rod and bamboo storage block. 13 points



H11I. All-Clad 2-Square Belgian Waffle Maker: Features 6-setting browning control for precise cooking, a power indicator, a ready-to-cook indicator, durable stainless steel exterior, a cool-to-touch handle and non-slip feet. 13 points



H12A. Polo Ralph Lauren Spencer King Size Sheet Set-White:

In ultra-soft cotton with a polished luster and a 475-thread count, this Spencer sateen sheet set will lend luxe comfort to your bed. King set includes: (1) flat sheet, (1) fitted sheet and (2) king size pillow cases. 13 points



H12D. Original Fatboy Bean Bag Chair: This fun and multifunctional seat is perfect for hanging out, watching TV, or just relaxing. Filled with polystyrene beads on the inside and protected by a durable water and stain-resistant nylon on the outside. 14 points



H12G. 2-in-1 Configurable Pet Gate-n-Crate:

This easy-to-assemble wooden pet crate converts into a gate and includes a removable plastic tray. Overall dimensions: 32½"(L) x 22½"(W) x 23½"(H). 15 points



H12B. T-Fal Precision Ceramic 12-Piece Set:

Scratch and stain-resistant ceramic coated cookware includes: (1) 8" fry pan, (1) 10¼" fry pan, (1 each) 1, 2, 3-quart covered sauce pans, (1) 5-quart dutch oven, (2) tools and glass lids. 13 points



H12E. Cabela's Orthopedic Comfort Couch Dog Bed, Large:

An orthopedic foam base provides relief for achy joints on older pets. The velvet microfiber bolster and sleep top provide unmatched comfort and support. Zippered cover removes easily for washing. Exterior: 64" (L) x 44"(W). Interior: 44"(L) x 34"(W). 14 points



H12H. Hoover® FloorMate Deluxe:

This bare floor cleaner truly scrubs and dries all sealed hard floor surfaces. This machine also eliminates hands and knees scrubbing and the need for a mop and bucket while cleaning 360 sq. ft in one tank! 15 points



H12C. Royal Cross Cut Shredder:

14-sheet capacity, cross-cut shreds, auto start/stop and reverse, silver finish with wire mesh grill wastebasket. 14 points



H12F. All-Clad 14" Stainless Steel Stir Fry Pan:

Features a thick, triple layer disc of stainless steel and 5mm aluminum that are permanently bonded to ensure fast and even heat distribution for preparing beef, chicken, pork and stir-fry vegetables. Features laser-etched stamp on bottom and new ergonomic handles. 15 points



H12I. Krups Savoy Thermal Coffee Maker and Toaster Bundle:

Wake up to the aroma of freshly brewed coffee with the 12-cup coffee maker with thermal carafe. While you are enjoying fresh coffee, you can also enjoy bagels, toast, or waffles with the Krups Savoy 4-slice toaster with 6 levels of browning. 15 points



H13A. Cuisinart 1000 Watt Microwave: Stainless steel accents microwave with touchpad controls features 25 cooking options and rotating 12" glass tray. 16 points



H13B. Omaha Steaks The Private Reserve® Grand Trio: Includes (2) 6 oz. Private Reserve® filet mignons, (2) 11 oz. Private Reserve® boneless New York strips & (2) 8 oz. Private Reserve® top sirloins. 16 points



H13C. Breville Juice Fountain Plus 850-Watt Juice Extractor: Extra-wide 3" feeder chute can create 8 oz. of juice in just 5 seconds. Stainless steel cutting disc surrounded by Italian-made, micro mesh filter extracts up to 30% more juice and 40% more vitamins and minerals than other juicers. 16 points



H13D. Acti-Bread BreadMaker with 15 Programs: This stainless steel breadmaker features 700 watts, 15 programs, 3 loaf sizes and 3 crust settings, LCD display indicator light, non-stick inner pan with handle. 17 points

H13E. Hoover® WindTunnel Air™ Steerable Bagless Upright:

This lightweight and easy maneuverable vacuum features WindTunnel® 3 Technology that lifts and removes deep down embedded dirt with 3 channels of suction. The steerable design allows you to swivel and turn around objects with a flick of the wrist. 17 points



H13F. Cuisinart 13-Cup Food Processor and Dicing Kit: Tackle food prep tasks both large and small with this processor featuring a 10mm screen for dicing food into perfect squares, 13-cup work bowl, bonus 4½ cup bowl, 2 stainless steel blades and 2 discs make quick work of chopping, pureeing, slicing and more. 17 points



H13G. Omaha Steaks (12) 10 oz Filets Prime Rib: Cut from the "eye" of our prime rib roast, our ribeyes are incredibly tender and juicy with the prime rib taste you crave! 18 points



H13H. Nutri Ninja Blender Duo: Pulverizes ice to snow in seconds for creamy smoothies. Extractor blades break down whole fruits and vegetables with Auto-iQ technology blending programs. Includes (3) Nutri Ninja cups. 18 points

H13I. Brother Computerized Sewing Machine: Complete with an easy-to-use advanced needle-threading system, the Brother features 50 built-in stitches and a bright LCD screen. Its computerized stitch selection allows you to choose from a range of decorative, quilting or heirloom stitches to embellish your home or wardrobe. Soft cover included. 18 points





H14A. Cabela's 12-Tray Pro Series Dehydrator:

Make your own fruit roll-ups, jerky, dried vegetables and any other delicious, nutritious dehydrated snack you can think of with this dehydrator. Advanced rotating LED display lets you monitor set time, set temperature, actual time and actual internal temperature at a glance. 20.7"(L) x 18.2"(W) x 20"(H). 18 points



H14D. Sentry® Safe Quick-Access Biometric Pistol Safe: Open using a biometric lock, zero-feedback digital keypad or an override key. Dimensions 3.2"(H) x 12"(W) x 10"(D). 18 points



H14G. Mr. Freeze 1 1/2-Quart Ice Cream Maker with Compressor: Featuring a commercial quality self-cooling compressor suitable for making ice cream, frozen yogurt, gelato or sorbet. The transparent cover with ingredient spout allows you to easily add ingredients. 19 points



H14B. Omaha Steak and Burger Package: The fanfare includes (4) 6 oz. filet mignons, (4) 10 oz. boneless New York strips, (4) 10 oz. ribeyes and (16) 5 oz. gourmet burgers. 18 points



H14E. Cuisinart 7-Quart 4-in-1 Multi-Cooker: Brown ingredients right in the unit and switch to slow cook or roast with the touch of a button for effortless combination cooking. Preset function buttons with time and temperature controls make it simple to use. 19 points



H14H. Cabela's Pro Series Meat Grinder: Process your favorite meats using our die-cast-aluminum grinder. Quiet yet powerful 1 1/2 HP DC motor combined with a #12 head yields over 7 lbs. of meat per minute. Features full-power grinding mode, reduced-speed grinding mode, sausage-stuffing mode and reverse. 19 points



H14C. Elite-Gourmet Portable Ice Maker: Features 1 1/2 liter water tank and indicator light to signal ice production is complete. Produces 24 square-shaped ice cubes (1 sheet) in under 18 minutes with small and large ice size settings. Produces up to 35 lbs. of ice in 24 hours. 18 points



H14F. Sirius/XM Radio Subscription: Get a 1-year subscription to Sirius/XM. Must have hardware in your car or home to connect to. 19 points



H14I. De'Longhi 15 Bar Pump Espresso and Cappuccino Machine: 15 bar professional pressure assures quality results every time. Features second tier drip tray to accommodate larger cups and removable 37 oz. water tank. 19 points



H15A. Glider and Ottoman Set with Cushion: Classically designed to be a perfect fit in the nursery and transition to the living room or den as your child grows. Enjoy the matching ottoman and the smooth gliding motion. 19 points



H15D. Set of 2 Adirondack Chairs: This natural solid fir wood chair set invites you to sit down, relax, and soak in the beauty of the great outdoors. You'll want to be outside to enjoy a cup of coffee and a good book or to sit around a fire with friends in this sturdy foldable chair. With wide arms and a contoured seat, this chair has all the features of a traditional Adirondack chair, plus an ergonomic shape that follows the contours of your body. 21 points



H15G. Emeril Lagasse 14-Piece Stainless/Copper Cookware Set: This beautiful cookware set features encapsulated aluminum bases with copper core for exceptional heat distribution. Safe for all stove tops including induction. Oven and dishwasher safe. 23 points



H15B. KitchenAid Sparkling Beverage Maker Powered by SodaStream: Enjoy a fresh, fizzy beverage. Simply fill the bottle with fresh water. Then use the carbonation lever to fizz

up to your desired level of carbonation. Next, simply add your flavor of choice or enjoy the carbonated water just as it is. 20 points



H15E. Rowenta Intense Pure Air True HEPA Purifier:

With its exclusive technology and 4 stages of filtration, this is the only air purifier on the market that filters 99.97% of indoor pollutants including dust, pollen, pet dander, viruses, bacteria, mold and more. Carbon filters eliminate offensive odors and harmful toxins and permanently destroy formaldehyde. Covers rooms up to 400 sq feet. 21 points



H15H. Nest Learning Thermostat:

Programs itself and automatically helps save energy when you're away. And you can control it using your phone, tablet or laptop. 23 points



H15C. Executive Desk Chair: Work in comfort in our beautifully tailored executive desk chair. Chair adjusts for your height and seating position with locking tilt control. Back with headrest adjusts from 46" to 50" for tall users. 21 points



H15F. King Kooker Stainless Steel 3-Piece Pot Set: Great for steaming and boiling! This 3-pot set is constructed with heavy-duty stainless steel and offers 3 sizes: 32-quart, 44-quart and 52-quart nested pots, that each include a lid and steam plate for any cooking occasion. 22 points



H15I. Cuisinart 5 1/2-Quart Stand Mixer: Features polished stainless steel bowl, 500 watt motor, die cast metal construction, 12 speeds for precision mixing and tilt back head, allowing easy access to the bowl. 24 points



H16A. Fatboy® Original Beanbag, Outdoor: Featuring high-grade Sunbrella® fabric the Original Outdoor Bean Bag is water and dirt repellent, easy to maintain, amazingly snug and that wind, sun and moisture are certainly no problem. Measures 55"(W) X 70" (L). 24 points



H16B. Ave Six Laguna Chair: A great conversational piece of accent furniture. With the soft script detail, this chair is very transitional with its style. 25 points



H16C. Furbo Dog Camera: Furbo is the only pet camera with treat dispenser designed just for dogs. The dog treat camera lets you see, talk and toss treats to your dog when you're not home. 25 points



H16D. Catskill Wine Rack: Really versatile, this 40" tall wine rack holds 36 bottles with plenty of top surface for glasses.

Handy drawer stores tools and caps. Hardwood has oil finish that wipes easily. 25 points



H16E. JA Henckels Twin Signature 19-Piece Block Set: Featuring triple riveted handles, this set includes (1) 2 1/2" peeling knife, (1) 4" paring knife, (1) 5" serrated utility knife, (1) 6" sandwich knife, (1) 8" bread knife, (1) chef's knife, (1) 4 1/2" utility knife, (1) 7" Santoku hollow edge knife, (8) 4 1/2" steak knives, (1) 9" steel kitchen shears and wood block. 26 points



H16F. Cuisinart 12-Bottle Dual Zone Wine Cellar:

Features dual fan system and double-door compartments to allow for 2 different temperature zones for whites and reds. Touchpad manually adjusts temperature and soft interior lighting. 27 points



H16G. Epson Expression EcoTank Wireless All-in-One Printer:

This printer offers revolutionary, cartridge-free printing with easy-to-fill, supersized ink tanks. It includes up to 2 years of ink in the box. It also offers convenient wireless printing from tablets and smartphones, Wi-Fi direct and auto 2-sided printing. 28 points



H16H. Scanpan Classic 8 Piece Cookware Set: Featuring famous Scandinavian design, traditional, solid craftsmanship and the latest advances in technology. Set includes: (1) 8" and (1) 10 1/4" fry pans, (1) 10 1/4" sauté with lid, (1) 2-quart saucepan with lid and (1) 6 1/2-quart Dutch oven with lid. 29 points



H16I. Popcorn Trolley: Create freshly popped, buttered popcorn, perfect for parties. Easy-to-clean, detachable stainless steel 8 oz. popping kettle. A great addition to any recreation room or home theater. Stands at 5' tall. 33 points



H17A. Vitamix Professional Blender:

Features commercial-grade motor at 120V, variable-speed control, 'Vortex'-type processing and spill-proof lid. 36 points



H17B. Martellata 10 Piece Hammered Copper Cookware Set:

This remarkable set features a hammered copper exterior and a brushed stainless steel interior. This combined with a heat-radiating aluminum core provides optimal heat distribution throughout the pan. 37 points

H17C. Dyson Cyclone V10 Motorhead Lightweight Cordless Stick Vacuum Cleaner:

Featuring big machine suction power with cord-free versatility, this vacuum has powerful suction to deep clean carpets and remove ground-in dirt. With three power modes to choose from, it suits any task on any floor type. It quickly transforms to a handheld for quick clean ups. 37 points



H17D. SitTight Balance Chair:

Standing desk chair increases core strength, improves posture and burns more calories than a ball chair. 51 points



H17E. iRobot Roomba Robotic Vacuum Cleaner:

This floor cleaner seamlessly navigates room to room to clean an entire level of your home, recharging and resuming until the job is done. Featuring the revolutionary AeroForce Cleaning System, it delivers up to 5x the air power and requires less maintenance. 52 points



H17F. Space Star Ergonomic Desk Chair:

Features adjustable height, arms, headrest and tilt control, 360 degree swivel and executive comfort. 53 points



H17G. Simmons Leather Recliner:

Traditional-style recliner has soft bonded leather and nailhead trim. With easy-pull mechanism and cushioned back and seat, it stops in any position from upright to fully reclined. Popular saddle tan color. 58 points



H17H. Klaussner Brent Recliner:

This super soft, bonded leather chair has a built-in heat and massage in back panel. Choose from three leather colors: black, dark brown or burgundy. 58 points



H17I. 24-Gun ProVault Safe:

Store your firearms and valuables with confidence and peace of mind in a ProVault Safe by Liberty. Heavy-duty, 2-piece door and body construction is six times

stronger than competing designs. Dimensions: 59"(H) x 28"(W) x 20"(D). 68 points



H18A. Gamila Accent Chair: Cozy barrel back and welted box cushion in light gray woven polyester, with double row nail accents along the weathered pine, exposed wood frame. Seat height is 18". 70 points



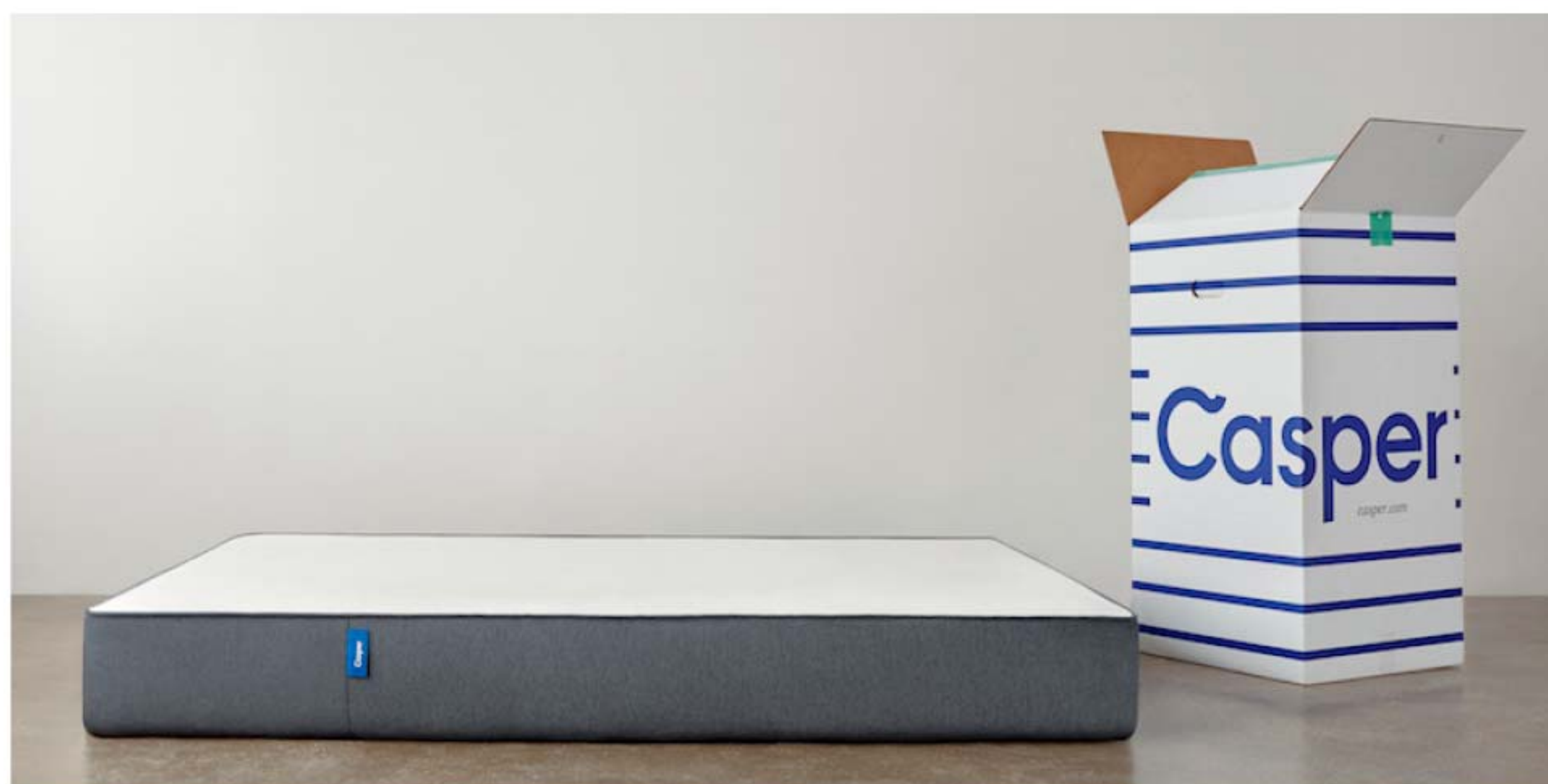
H18B. Willa Armchair: Pine and white mahogany frame with reinforced joinery. Hand-carved and hand-finished in an ash gray wash over natural wood grain. Woven polyester in steel gray and tan with individually hammered nail accents. Seat height is 20". 71 points



H18C. iRobot Roomba 980 Vacuum Cleaning Robot: Its smartphone app allows you to schedule and set custom cleaning preferences. It provides up to 10x the air power on carpets and rugs and works with Alexa voice command. Includes a high efficiency filter, 2 extra side brushes, docking station and a manual. 72 points



H18D. Bar Table and 2 Chairs: Royal Tropical Teak is the most durable material possible for year-round outdoor entertaining. This bar set including 2 stools and 36" high table is great by the poolside or on the BBQ deck. 82 points



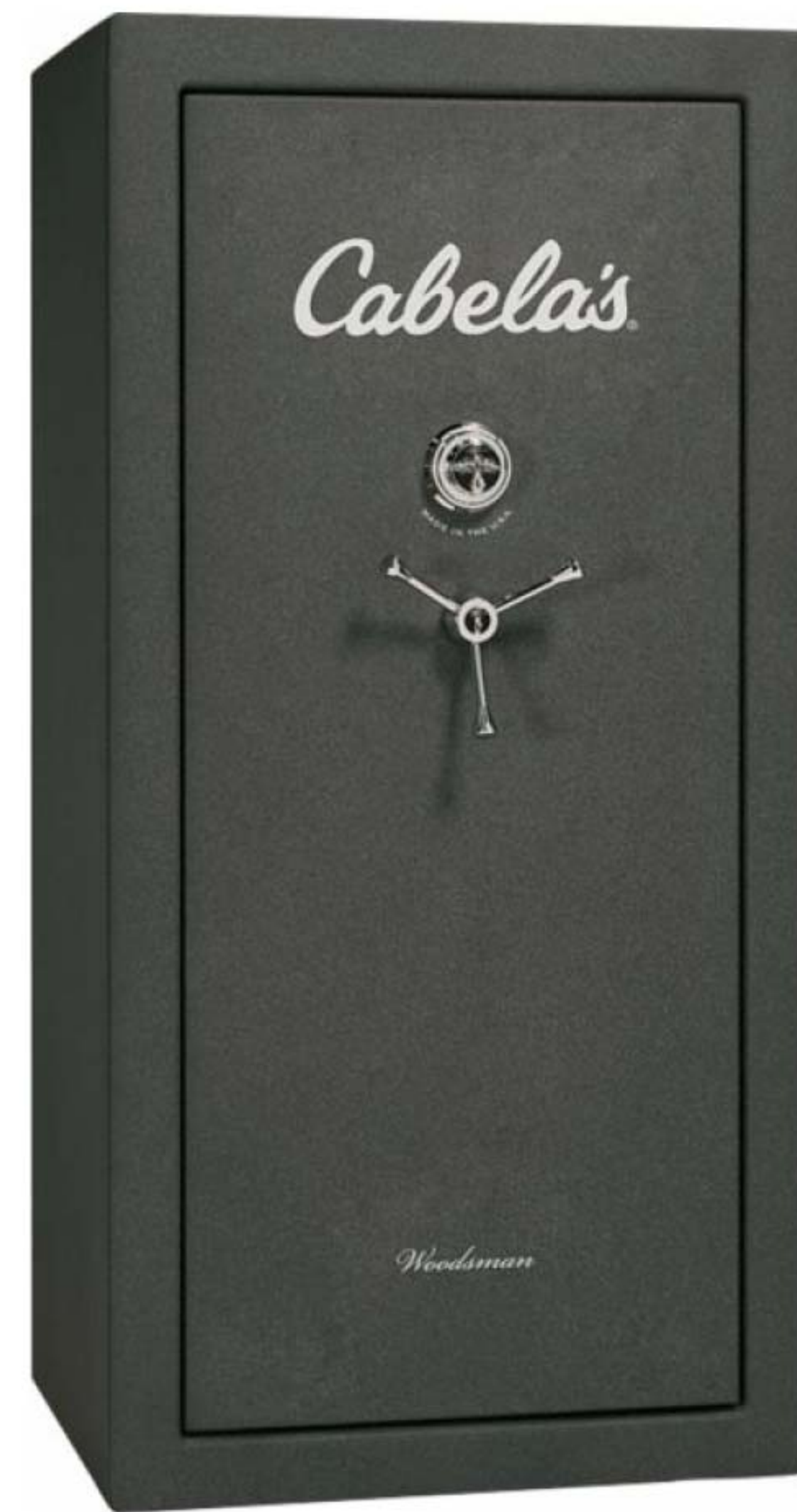
H18E. The Casper Mattress, Queen: This best-selling mattress features zone support for better alignment and 4 layers of premium foam to provide maximum comfort. 82 points



H18F. Phyllis Outdoor 4-Piece Brown Wicker Sofa Set: Provides you with great outdoor seating and storage. This beautiful set includes (2) chairs, a sofa, and an ottoman that doubles as a table. The seats are padded with weather resistant complimenting beige fabric cushions for comfortable lounging. 85 points



H19A. The Casper Mattress, King: This best-selling mattress features zone support for better alignment and 4 layers of premium foam to provide maximum comfort. 99 points



H19B. Cabela's 30 Gun Woodsman Gun Safe Series by Liberty: Features 40-minute fire rating (68,000 BTU), secure locking bolts, steel gussets for added pry protection and 12-gauge, 2-piece roll-form bodies. 114 points



H19C. LG 5.2 Cu. Ft. High-Efficiency Front-Loading Washer with Steam and Wi-Fi Connectivity: 14 wash cycles and a large-capacity design. Smart ThinQ technology lets you remotely start the washer and monitor the cycle with your smartphone. 116 points



H19D. LG 9.0 Cu. Ft. Electric Dryer with Steam and Wi-Fi Connectivity: Quiet design for minimal disruption and dual LED digital controls that make it easy to choose between the 14 preset drying cycles. Remotely start the dryer and monitor the cycle with your smartphone. 116 points



H20A. Jason Outdoor Wicker Sofa 7-Piece Sectional Set with Cushions: Stylish dark brown wicker and beige cushions are a great neutral color. Made of sturdy powder coated steel and woven with PE wicker with weather resistant cushions that require very little maintenance. Includes: (1) corner chair, (2) armless chairs, (1) right armchair, (1) left armchair, (1) club chair and (1) table. 125 points



H20B. Frankline Reclining Sofa: Top grain leather reclining sofa is a full 90" long. Top grain leather is soft and wear and stain-resistant. Steel spring support and easy-pull recliner mechanism. Choose from brown, tan or burgundy color. 151 points



H20C. Krups Barista One Touch Full Auto Coffee Machine: The ultimate coffee maker for 1-touch perfection. Digital screen allows for complete customization of drinks in strength, temperature and quality. Grinds coffee automatically for each individual selection. 158 points



H20D. Simons Microsuede Sectional Sofa: 90" on each wing. Includes (8) big back cushions and (1) throw pillow. Easy clean micro fabric comes in 3 colors: cafe (dark brown)-shown, mocha (light tan) or red wine color. 172 points



H21A. The ZeroG® 5.0 Human Touch Massage Chair:

The Smart 3D FlexGlide® massage engine simulates the expert techniques of massage professionals to help restore your body and leave you relaxed and ready to live life. Take a seat, recline to zero-gravity and simply point to where you need relief on the revolutionary BodyMap PRO® remote. 182 points



H21B. Sunview Theater Group: This recliner group includes 3 recliners and 2 wedges. Leather seating with perfectly matched vinyl shell. Watch the game or movies in style! Choose black or brown. 199 points



H21C. Outdoor Dining Group:

All weather rattan is woven in a stylish pattern. High density cushions. 54" round table and 4 chairs. 276 points



H21D. Sunview 3-Piece Leather Motion Group:

Both ends of the sofa recline. The loveseat has 2 recliners and matching chair is a recliner as well. Fine top grain leather is supported by steel arch frame and dense foam seating. Choose from brown, tan or burgundy leather. 325 points



W22A. Polo Ralph Lauren Leather Trifold Wallet: This wallet provides ample storage in a slim, trifold design and features six card slots, a single currency pocket and two slide pockets to keep things separate and organized. 12 points



W22B. Polo Ralph Lauren Bennington Slim Leather Wallet: A slim silhouette that fits inside a clutch or small satchel gives this leather wallet a sleek look, while a signature “LRL”engraved ring dials up its chic iconic look. Features: snap closure, exterior zip pocket, (4) full length interior slip pockets, (15) interior card slots and interior ID window. Shown in black, also available in tan. 12 points



W22C. Fossil Women’s Jacqueline 3-Hand Stainless Steel Watch: Feminine with a classic twist, this watch features polished-to-perfection steel and refined Roman numerals that will add the finishing touch to any outfit. 12 points



W22D. The Pandora Simple Heart Bracelet: This sterling silver bracelet features the best selling Big Smooth Heart charm. This subtle, elegant combination makes for a stunning starter bracelet. 12 points



W22E. Frye Logan Billfold: This wallet features antiqued leather, 2 billfold pockets, 8 card pockets and is embossed with the Frye’s double-F logo. 12 points



W22F. Frye Melissa Wallet: Antique pull-up leather continental snap wallet. Features: snap closure, (14) card slots, (2) slip pockets, (1) ID window and exterior back sleeve pocket. 12 points



W22G. Vineyard 4-Piece Softside Luggage Set: Includes 27” upright spinner, 20” carry-on spinner, 22” rolling duffel and 15” travel tote. Features push-button locking, retractable handle system, in-line skate wheels for smooth rolling and 2 zippered pockets. 13 points



W22H. Fossil Men’s Stainless Steel Analog Black Dial Watch: Embrace minimalism with this matte black IP stainless steel chronograph. 12 points



W22I. Pandora Everlasting Shine Bracelet: This 7 1/2” bracelet features a sterling silver “Infinite Shine Charm” at its center. Sleek and simple in design yet carrying a wealth of meaning, this openwork charm consists of multiple infinity signs. 12 points



W23A. Polo Ralph Lauren Bennington Shopper in Lauren Tan:

With a signature "LRL" luggage tag, this bag will keep you looking polished throughout the

day. Features a textured leather exterior, fully lined with interior zip pocket, (2) slip pockets and (4) card slots. Measures: 11 1/4"(L) x 4 1/2"(W) x 9 1/2"(H) with 9" handle drop. 13 points



W23B. Polo Ralph Lauren Charleston Crossbody in Black:

Keep your look classic with this signature style of this crossbody bag featuring crosshatch leather design with polished gold hardware. Triple entry interior features monogrammed lining, full center divide zip compartment, backwall zip pocket, 2 slip pockets and reinforced flat base, so bag sits upright when not being carried. 13 points



W23C. Kate Spade Watson Lane Quilted Hartley Backpack:

While perfect for gym trips, commutes and overnights, this stylish bag's quilted detail transforms its utilitarian nature into something that feels special. This backpack was created to keep so many options in mind. 13 points



W23D. Bugatti Perreira Executive Business Case:

Fits up to a 15.6" computer in a secure compartment and is made from Colombian leather. Front and back zippered pockets allow for quick access to essential items. The removable shoulder strap provides a hands-free carrying option. 15 points



W23E. Polo Ralph Lauren Carrington Leather Shopper in Black:

An oversized polished gold "LRL" plaque adds a boldly chic note to this clean-lined pebbled leather handbag, featuring secure top zip closure, a fold over snap closure, double-rolled handles with 5" drop and shoulder strap with 16" drop. Measures: 11 1/2"(L) x 5"(W) x 9 3/4"(H). 16 points



W23F. Michael Kors Darci Pearl White Two-Tone Ladies Watch:

Features a stainless steel case with a two-tone (silver and gold-tone) stainless steel bracelet. Fixed gold-tone bezel set with crystals. Pearl white dial with gold-tone hands and index hour markers. Dial Type: Analog. Quartz movement. Scratch-resistant mineral crystal. 16 points



W23G. Michael Kors Oversized Bradshaw Sable Chronograph Unisex Watch:

Features a sable-plated stainless steel case with a sable-plated stainless steel bracelet. Fixed bezel. Sable dial with rose gold-tone hands and Roman numeral hour markers. Minute markers around the outer rim. Analog dial. Date display at the 6:00 position. Chronograph has sub-dials for 60 second, 630 minute and 24 hour. Scratch-resistant mineral crystal. 16 points



W23H. Pandora Shimmer Radiance Bracelet:

Two intertwining radiance charms comprised of sparkling cubic zirconia stones encased in shimmering silver strands, surround 1 center iridescent purple shimmer charm. 17 points

W23I. Kenneth Cole Reaction 4-Wheel Upright Luggage:

This 28" luggage piece features 4-wheel spinners to allow for full 360 degree mobility. It is made of a lightweight construction with durable ABS Exterior with molded corner reinforcement for maximum impact resistance. The interior main compartment features garment restraints and a zipper pocket. It also has a retractable locking handle system. 17 points





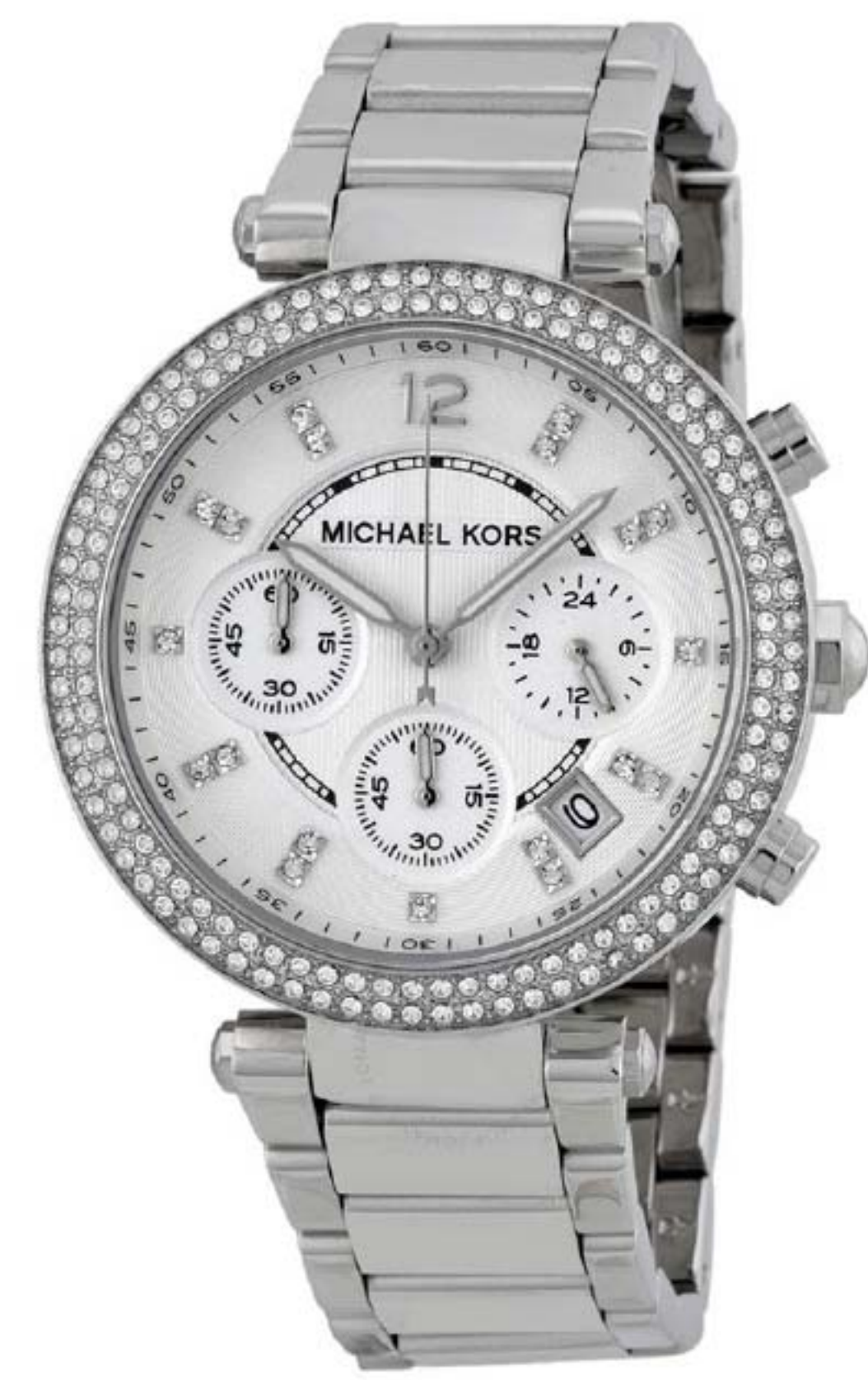
W24A. The Dooney and Bourke Pebble Grain Piper:

The perfect size to hold all your essentials and has enough pockets to help keep your items organized. It includes a front zip pocket for easy access and a top zip closure to keep all items secure. The interior has an inside zip pocket, two inside pockets, a cell phone pocket and an inside key hook. Strap drop length: 23½". 17 points



W24B. Kate Spade Cameron Street Small Hayden:

It's important to have a bag that not only holds everything in one place, but looks put together, too. Features luxe crosshatched saffiano leather, this purse can be worn over the shoulder on the weekends or carried crossbody with the day's essentials for a busy 9-to-5. 17 points



W24C. Michael Kors Parker Silver Dial Stainless Steel Chronograph Ladies Watch:

Features a fixed silver-tone bezel set with crystals and silver dial with luminous hands and crystal-filled index hour markers. 18 points



W24D. Michael Kors Parker Silver Dial Stainless Steel Chronograph Men's Watch:

Features a fixed stainless steel bezel and silver dial with silver-tone hands and index hour markers. 18 points



W24E. Dooney & Bourke Pebble Grain Tammy Tote:

Cut from durable, pebbled leather and furnished with contrast bridle-leather handles, this everyday staple hosts a roomy interior and secure zip divider pouch for all of your precious essentials while the exterior patch pocket effortlessly holds a cell phone. Handle drop length: 10". Measures: 11"(H) x 13"(L) x 6"(D). 19 points



W24F. Polo Ralph Lauren Leather Marcy Tote in Field Brown:

Go from morning meetings to dinner dates with this sophisticated leather tote featuring a detachable shoulder strap, 2 top handles with 5" drop and an open tote with dog clip closure. Signature LRL monogram at front. Measures 14"(L) x 6"(W) x 10"(H). Also available in red or black. Please specify your color choice on your order. 19 points



W24G. Polo Ralph Lauren Bennington Double Zip Satchel in Red:

This wear-with-anything satchel is crafted from rich leather and features a detachable shoulder strap for hands-free carrying, along with signature print lining and several pockets for organizing. Measures 14½"(L) x 11"(H) x 6"(W). 19 points



W24H. Lagos Signature Caviar Hoop Earrings:

Signature sterling silver caviar beads form these versatile hoop earrings, which are finished with 14k gold post backing. 19 points



W24I. Lagos Signature Caviar Petite Oval Rope Bracelet:

5 smooth stations highlight the rich sterling silver caviar beading on this sophisticated oval rope bracelet that is finished with a box clasp displaying the Lagos crest. Measures: 6mm (W) x 7" (L). 21 points



W25A. Frye Lena Magazine Crossbody Purse:

This small, leather tote crossbody features zipper closure, adjustable leather strap, (1) exterior zip pocket, (1) exterior slip pocket, (2) interior slip pockets, (1) interior zip pocket and fabric lining. Measures 10 $\frac{1}{2}$ "(L) x 12"(H) x 2 $\frac{1}{2}$ " (W) with a 3 $\frac{1}{2}$ " handle and a 21 $\frac{1}{2}$ " strap. 21 points



W25B. The Tissot Chrono XL Men's Watch: Characterised by its 45mm diameter casing, the size of the dial makes time easily readable. Contemporary Arabic numerals at 12, 3, 6 and 9 o'clock and the chronograph function add to its urban style. 22 points



W25C. Seiko Men's & Ladies Watch Set: Includes men's stainless steel watch with black dial and chronograph movement and ladies prime crystal silver tone case and bracelet with black dial. 23 points



W25D. Kate Spade Kingston Drive Bartlett:

For those who love a minimalist mentality, the clean lines of this satchel are sure to satisfy. Its spacious interior holds all your necessities and is finished with a playful tassel for a little personality. 25 points



W25E. Tissot Everytime Swissmatic Men's Watch: Features stainless steel case and band, scratch-resistant sapphire crystal, anti-reflective coating and is 100m water-resistant. 29 points



W25F. Tumi Alpha 2 T-Pass® Expandable Laptop Brief:

Features include a zip pocket with Tumi ID Lock™, a proprietary technology designed to protect personal data encoded on most IDs, credit cards and passports. 30 points



W25G. Kenneth Cole Reaction Renegade 8-Wheel Luggage Set:

This stylish and innovatively designed set is constructed with lightweight and durable ABS exterior with molded corner reinforcement for maximum impact. Set includes (1) 20", (1) 24" and (1) 28" expandable 8-wheeled upright. 31 points



W25H. Frye Logan Work Bag:

Details on this handsome leather bag include zipper closure, (2) zipper compartments, bottom zip compartment can stack on luggage, exterior zip pocket, (1) exterior mag snap pocket, (1) laptop pocket, (1) interior zip pocket, removable, adjustable shoulder straps and cotton lining. 32 points



W25I. Kenneth Cole Reaction 4-Wheel Upright 3-Piece Luggage Set:

This 3-piece set features 20", 24" and 28" luggage pieces and is made of a lightweight construction. The 4-wheel roller wheels allow for a smooth 360 degree rotation. Its durable ABS exterior has molded corner reinforcement for maximum impact. It also has a retractable locking handle system. 33 points



W26A. Frye Oliver Overnight Bag: This overnight bag from Frye’s leather collection with gnarled buckle hardware features zipper closure, interior zipper compartment, (1) exterior slip pocket, removable, adjustable shoulder strap and fabric lining. 35 points



W26B. Tissot Le Locle Powermatic 80 Men’s Watch: Features stainless steel case and leather band, scratch-resistant sapphire crystal and is 100m water-resistant. 36 points



W26C. Tumi Alpha 2 Carry-On 4 Wheeled Garment Bag: This carry-on garment bag is easy to handle, even down a narrow airplane aisle. In addition to carrying a suit or other hanging garments, it features plenty of interior pockets for accessories. The exterior pockets are ideal for folded clothes, shoes or a travel kit. 42 points



W26D. Tumi V3 Continental Expandable Carry-On: This luggage piece from Tumi’s lightest hardside travel collection is this shorter, wider 4-wheel carry-on that fits easily in your airline’s overhead. This hardworking case is not only effortless to maneuver and ideal for both international and domestic travel, but it is also now expandable. 42 points



W26E. Tumi V3 Short Trip Expandable Packing Case: From Tumi’s lightest hardside travel collection to date, this supremely light yet durable and expandable packing case, constructed from a special, multi-layer polycarbonate alloy formulation, is small and ideally suited for weekends and overnight business travel. 44 points



W27A. Planet Traveler Space Case Smart Carry-On Luggage: This 20" expandable upright spinner balances technology, style and functionality. Connect to the Planet Traveler App from your smart phone. Features GPS global tracking, an anti-theft alarm, Bluetooth speaker phone and robotic fingerprint TSA lock. 48 points



W27B. Tumi Tegra-Lite® X-Frame International Carry-On: Features a 2-point locking system with molded corners, a latch with a clasp to keep the bag closed. To open, push the button. To close, push the clasp down. Simple, safe and secure. 51 points



W27C. Tissot Chemin Des Tourelles Powermatic 80 Ladies Watch: Features stainless steel case and strap, white mother of pearl dial, scratch-resistant sapphire crystal with anti-reflective coating and is 50m water resistant. 49 points



W27D. Tissot Lovely Ladies Watch: Features stainless steel case and strap, white mother-of-pearl dial, scratch-resistant sapphire crystal and is 30m water-resistant. 53 points



W27E. Tissot Couturier Automatic Chronograph Men's Watch: Features stainless steel case and band, scratch-resistant sapphire crystal anti-reflective coating, black dial and is 100m water resistant. 58 points



W27F. Movado Men's & Ladies' Stainless Watch Set: Includes men's stainless steel watch with black dial and matching ladies' stainless steel watch with black dial. 63 points



W27G. Tissot Fascination 18K Gold Ladies Watch: Features a beautiful 18k gold case and engraved case back, white mother-of-pearl dial and scratch-resistant sapphire crystal. 100 points



W27H. Diamond "S" Link Tennis Bracelet: Features 1.00twt round brilliant cut diamonds, 7" length with a box clasp, 14k white gold and a figure "8" safety clasp for added security. Comes with a certificate of authenticity. 99 points



W27I. Diamond Solitaire Earrings: Features 1.00twt round brilliant cut diamonds set in sterling silver diamond cut settings. Comes with a certificate of authenticity. 99 points



R28A. Igloo 3-Piece Camping Combo: Features Ultratherm™ insulation that keeps your food and drinks cold. Wheeled cooler has swing up handle and tow handle. Includes 38-qt. wheelie cool, playmate mini and legend 1-qt. cooler. 12 points



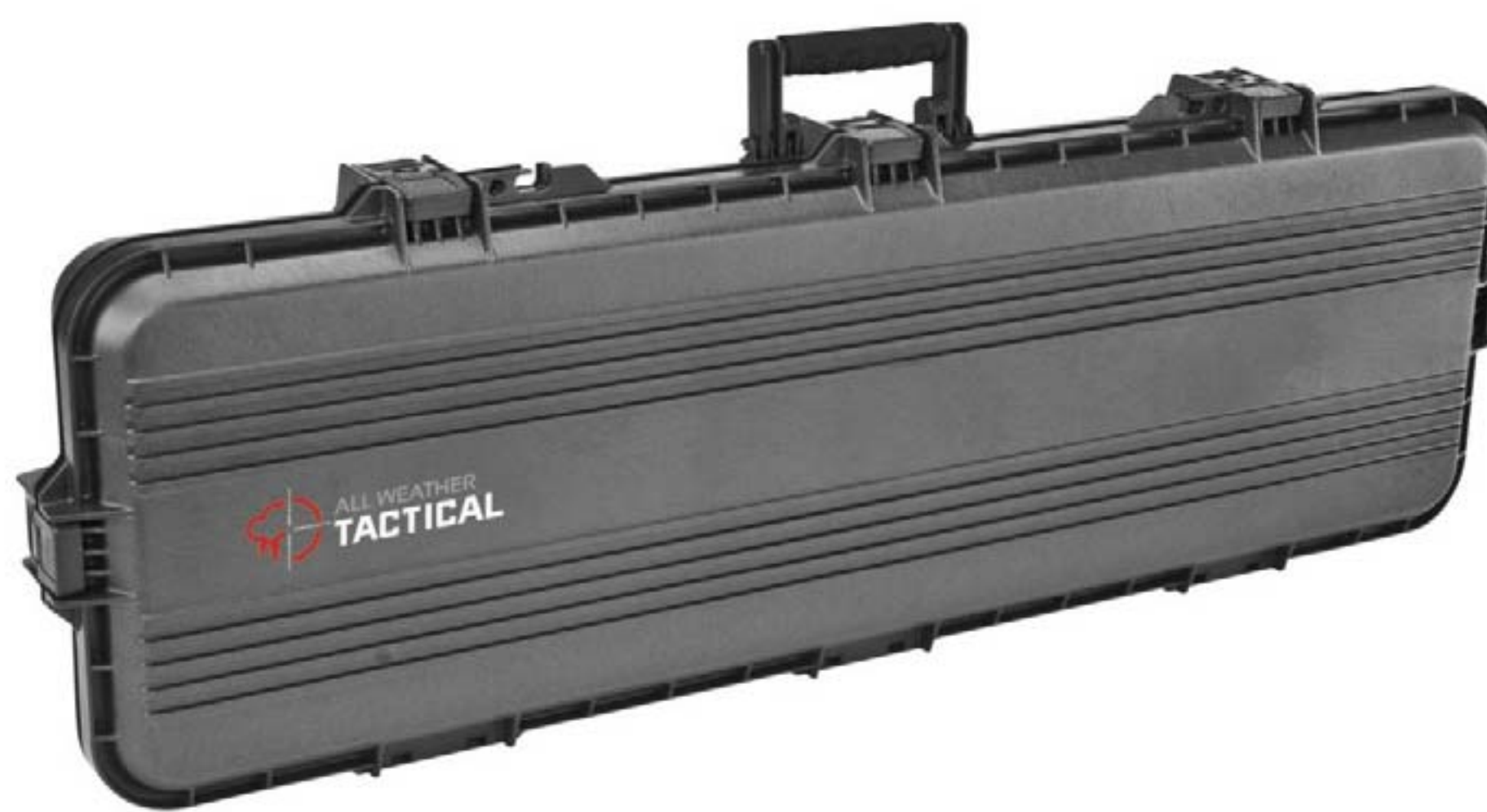
R28B. Lamzac the Original: Lamzac is a comfortable seat or sofa for two that you can fill with air within seconds using a unique filling technique. This seat features a single opening for easy inflation in seconds. Upgraded TPU coated ripstop nylon, a stake to keep the Lamzac in place at the beach or park and a carrying case with cinching shoulder straps are included. Dimensions: 78.7"(L) x 35.4"(H) x 19.7"(W). 12 points



R28C. Abu Garcia® Abumatic™ STX Spincast Combo: Features 4-bearing system that ensures smooth and efficient operation. Reel features an all-aluminum frame/cone and is pre-spooled with Berkley Trilene XL. 6' medium-power 2-piece rod features stainless steel guides with titanium-oxide inserts and EVA grips. 12 points



R28D. Razor® A5 Lux Scooter, Blue: Featuring extra-large urethane wheels, the A5 Lux is the smoothest ride around. Easy to fold and ready to go, the A5 has a super strong aluminum t-tube and deck to comfortably support riders up to 220 lbs. 12 points



R28E. Plano® All-Weather Tactical Gun Case: Made for protection from the elements, it features thick-wall construction and a continuous Dri-Loc® seal for weathertight performance. Heavy-duty, dual-stage, lockable latches and padlock tabs provide security. High-density foam allows you to shape the padding to match your gun. Exterior: 46"(L) x 16"(W) x 5 1/2"(H). Inside: 42"(L) x 13"(W) x 5"(H). 12 points



R28F. Cabela's Advanced Anglers Tackle Bag, Large: Includes (6) utility boxes in main compartment, no-skid waterproof HDPE base, front gusseted pocket, (5) external stash pockets, zippered mesh pockets on top and back, (2) tool holsters on front panel and a premium padded shoulder strap, 14"(L) x 10"(W) x 11"(H). 12 points



R28G. Ray-Ban Modern Round Sunglasses: Modern design has gone full circle as Ray-Ban takes the classic round shape on another revolution. Along with distinctive rivets and Ray-Ban shaped temples, these styles feature a sleek, flattened bridge and stylish, tinted lenses. 12 points



R28H. Razor Turbo Jetts Electric Heel Wheels: Keeping the fun rolling at speeds up to 10 mph for up to 30 minutes of continuous use, these heel wheels feature 80-watt, geared-drive motor that delivers smooth, steady power, allowing riders to control the action with their preferred foot. Recommended for ages 9 and up. Supports riders up to 176 lbs. 12 points



R28I. Ray-Ban New Wayfarer Sunglasses: The most recognizable style in the history of sunglasses, Raybans are a classic pair of black-framed sunglasses. 12 points



R29A. Dartboard Cabinet With Electronic Scorer:

Cabinet not only hides your board from view when you're not playing and protects your wall from errant darts when you are, but also looks great amidst both traditional and modern design furnishings. The board is made of self-healing sisal that looks smooth and lasts for years. Scoring is handled by the dual scorers, a chalkboard scorer on the left or an electronic scorer on the right. 12 points



R29D. Ray-Ban Cats Sunglasses:

Classic sunglasses feature a reinterpretation of the iconic Aviator into a lightweight propionate, plastic frame material. These sunglasses offer optimal comfort and 100% UV protection to keep your eyes safe and glare-free. 13 points



R29G. Melissa & Doug Wooden Grocery Store and Lemonade Stand: This play center performs double-duty as both a grocery store and lemonade stand. Flip the awning to let customers know what you're selling today. Portable plastic bins for pretend shopping or storage are included. Sturdy wood construction allows for easy assembly. 14 points



R29B. DJI Tello Toy Quadcopter Drone:

This drone can stream 720p video back to your smartphone, capture 5MP photos and features intuitive smartphone control using free downloaded app. Measures: 3.8"(L) x 3.6"(H) x 1.6"(W). 13 points



R29E. Ray-Ban Rainbow Flash Sunglasses:

The timeless style of the original Aviator combined with rich, new metal tones and exciting new lenses. These bronze-copper, rainbow flash lenses switch into a new dimension of contemporary style for a look that will always make you stand out from the crowd. 13 points



R29H. Double Basketball Shootout Game:

LED electronic scoring with a time clock keeps track of the action for 8 different games. Easily start and stop games and navigate between each game mode. Flexible dual power system allows you to play using the included AC adapter or battery-powered option. The set arrives ready to play with (4) basketballs and a pump and needle. When finished playing, the frame folds and locks into place for easy storage. 18 points



R29C. Costa Del Mar Black Fin Sunglasses:

These shades feature Hydrolite co-injected lining eliminating slipping, and the flexible frame means serious comfort. Keep your eyes comfortable in any environment with the 100% UV light blockage for max protection and 100% polarization that kills reflected glare and reduces eye strain. Gray plastic lenses are lightweight, impact and scratch-resistant with black frames. 13 points



R29F. Yeti Rambler Stainless Gallon Jug:

Designed to be nearly indestructible while keeping every drop of precious water perfectly cold. Or, if it's a gallon of coffee you and your crew need, this jug handles the heat, too. 13 points



R29I. Swurfer the Original Stand Up Surfing Swing:

This American-made, maple swing is designed for soaring through the air like a surfer on the waves. It is great for exercising or just relaxing in the trees in either a sitting or standing position. The adjustable handles work for users of any height and can support up to 200 lbs. 13 points



R30A. Melissa & Doug Cook's Corner Wooden Kitchen Play Set:

This compact wooden kitchen with realistic details features refrigerator, cook top, oven, removeable sink, a working timer and more. Measures: 26"(H) x 36"(L) x 16"(W) assembled. Contains small parts; adult assembly required. Ages 3 years and up. 14 points



R30D. 54-Quart Double-Walled Party Cooler with Bluetooth Speakers:

This cooler includes (2) high-powered speakers that are able to connect to any device via Bluetooth, giving you clean, crisp music up to 35 feet away. The speakers are water-resistant. 15 points



R30G. Maui Jim Spartan Reef Sunglasses:

Features of these polarized sunglasses include a sleek frame and unisex design. Black frame with grey lenses. 16 points



R30B. Costa Del Mar Cut Coconut Shade:

These sunglasses feature a no-slip and the flexible frame providing serious comfort. Keep your eyes comfortable in any environment with the 100% UV light blockage for max protection and 100% polarization that kills reflected glare and reduces eye strain. Blue mirror polarized glass lenses are lightweight, impact and scratch-resistant. 14 points



R30E. American Angler Pro 5-Blade Electric Filet Knife Set:

With a powerful and long-lasting motor, this electric filet knife set includes a 110-volt high-performance, ergonomic motorized handset with 5 different stainless steel blades, a carrying case and safety glove. 15 points



R30H. Kent 26" Men's Rockvale Cruiser Bike:

With a sturdy frame, the Rockvale Cruiser will never let you down while you ride on different surfaces, including paved or unpaved roads, paths, or trails. Besides its stylish looks, this beach cruiser also features excellent linear pull brakes and a comfort saddle. The adjustable saddle height gives you a perfect fit. 16 points



R30C. Maui Jim Roadtrip Sunglasses:

Features PolarizedPlus 2 technology, which wipes out glare and stokes the color with a patented multi-layer design. Tortoise frame with olive lenses. 15 points



R30F. Triumph All-Pro All-Weather Aluminum Bag Toss:

Measuring 36" (L) x 24" (W), the multi-layer bonded, 5mm aluminum play surface will hold up in all weather conditions. Also included are 6 professional-grade 6" (L) x 6" (W) canvas cloth bean bags and a shoulder carrying case. 16 points



R30I. Kent 26" Ladies Rockvale Cruiser Bike:

With a sturdy frame, the Rockvale Cruiser will never let you down while you ride on different surfaces, including paved or unpaved roads, paths, or trails. Besides its stylish looks, this beach cruiser also features excellent linear pull brakes and a comfort saddle. The adjustable saddle height gives you a perfect fit. 16 points



R31A. Coleman HD POV Sport Goggles: These 1080p HD goggles record video and take pictures of your experience with the push of a button, providing a 135-degree true point of view and featuring anti-scratch/anti-shock, UV protected safety lenses waterproof up to 3m/10ft. 17 points



R31B. Kent 26" Shogun Trail Blaster, 18" Frame/Men's Bicycle: Features steel ATB frame, 36-spoke alloy wheels, 21-speed Shimano index shifting, alloy liner pull brakes and levers and micro-shift twist shifters. 17 points



R31C. Kent 26" Shogun Trail Blaster, 16" Frame/Ladies Bicycle: Features steel ATB frame, 36-spoke alloy wheels, 21-speed Shimano index shifting, alloy liner pull brakes and levers and micro-shift twist shifters. 17 points



R31D. Lone Star Metal Detector: Designed for a variety of applications including coin shooting, relic hunting, and general purpose detecting, the unit provides target identification and mode on an easy to read LCD screen. Standard features include a built-in speaker, headphone jack and adjustable aluminum stem with an ergonomic S-Rod handle and armrest. 17 points



R31E. Cabela's Multi-Day Hunting Pack: The expandable main compartment in this pack gives you the flexibility you need to pack light or to bring all of your gear for a multi-day excursion. Expandable meat compartment and compression straps secure game meat tightly against the back panel. Easily carry your rifle or bow thanks to the external attachment straps and rifle/cam boot. 18 points



R31F. Arccos 360 Golf Performance Tracking System: This golf tracking system includes a 2nd generation system, low-profile sensors, new shot detection algorithm, GPS 2.0 with rangefinder, 2-year battery guarantee and power saving mode. Also included are 14 ultralight sensors, starter guide and free iOS & Android apps. 18 points



R31G. Cabela's West Wind Dome 4-Person Tent: This 3-season tent is built like a fort, and its free-standing 5-pole design is large enough to accommodate your entire family. Includes (5) fiberglass poles, attached guy lines, steel stakes and carry bag. 19 points



R31H. Bison Rolling Gun Case: The American-made Bison hard case keeps your rifles and shotguns protected and your mind at peace. Featuring heavy-duty roller wheels, this case is incredibly durable and has ATA/TSA approved lock holes to ensure your goods are secure while traveling. Interior Dimensions: 51.4"(L) x 13.8"(W) x 5.1"(H). Exterior Dimensions: 55"(L) x 16.7"(W) x 5.9"(H). 19 points



R31I. St Croix Rio Santos Fly Fishing Combo 9'/5WT 4-Piece: Features premium SCII graphite blanks, die-cast aluminum reel with disc drag and ready-to-fish combo packed with a 4-piece fly rod, fly reel and fly line. A protective rod and reel case comes with handle and divided polypropylene liner. 19 points



R32A. Maui Jim Maverick Sunglasses: Polarized aviator sunglasses with silver frames and grey lenses. 20 points



R32B. Louisville Slugger Blue Flame Pitching Machine + Baseball Practice Net Bundle:

This manual pitching machine throws any type of ball - hard balls, fast pitch softballs and even soccer balls - with the ability to pitch from 18-45 mph. Combined with a 7 x 7 practice net with bow frame this bundle will help you train anywhere. 20 points



R32C. 20" Huffy Summit Ridge 6-Speed Hardtail Mountain Bike, Blue: With a fierce, aggressive design, 6 speeds, front suspension and front/rear handbrakes, the Summit Ridge is ready for epic, outdoor fun. Ideal for ages 5-9 and a rider height of 44-56". 20 points



R32D. 20" Huffy Summit Ridge 6-Speed Hardtail Mountain Bike, Solar Flare Pink: With a fierce, aggressive design, 6 speeds, front suspension and front/rear handbrakes, the Summit Ridge is ready for epic, outdoor fun. Ideal for ages 5-9 and a rider height of 44-56". 20 points



R32E. Weathertec Altitude Quilted Jacket Set: This set includes a men's and women's jacket featuring an insulated layer with jersey fleece and mesh lining. 100% polyester. Available in charcoal grey. S - 3XL (Men's) and XS - 3XL (Women's). Please specify size on your order. 22 points



R32F. Nikon Prostaff 12x40 Rifle Scope: Large eyepieces provide an extra-wide field of view, and 3X zoom provides a detailed image. This scope features fully multicoated lenses to provide vivid pictures on your next outing. 22 points



R32G. Exclusive Cloud 9 Hanging Lounger: Heavy-duty steel frame keeps you supported and steady. Look to the polyester cushion with built-in pillow and padded armrests for extra comfort. The collapsible umbrella is perfect for shading out direct sun. Easy to assemble. Weight capacity: 260 lbs. 23 points



R32H. Callaway Chev Cart Bag: Features bold colors, stylish graphics and all the organization you need. Each pocket was designed to file open to allow for maximum storage with the ease of opening and closing. Topping off the bag is

a 14-way top with grab handle and full-length dividers, keeping your clubs organized. 23 points



R32I. Weathertec Trailhead Jacket Set: This set includes a men's and women's jacket featuring a ripstop waterproof shell and 100% nylon fabric. Available in black or grey. S - 3XL (Men's) and XS - 3XL (Women's). Please specify size and color on your order. 24 points



R33A. Razor E300S Seated Electric Scooter:

Chain-driven, high-performance, quiet motor with speeds up to 15 MPH, and a handy twist-grip throttle. Powered by a long-lasting rechargeable 24V battery. 10" pneumatic tires. 25 points



R33B. Ruff Tough Large Kennel:

Designed by outfitters and dog trainers, this kennel offers premium quality and durability. Made of heavy-duty, high-density polyethylene, this kennel measures: 35" (L) x 22" (W) x 26" (H). 24 points



R33C. Bushnell® Tour V4 Patriot Pack Laser Rangefinder:

Features 5-1000 yard max ranging, 400+ yards to a flag, pinseeker with jolt, 5x magnification, Stabi-grip technology helps with hand shake. 25 points



R33D. Singing Machine Bluetooth Pedestal Karaoke System:

Enjoy listening to and recording your music a variety of ways with the this Bluetooth karaoke system. Designed with a 7" color TFT LCD screen that provides a clear view of song lyrics, this karaoke system features a resting cradle for smartphones for convenient music streaming and displaying scrolling lyrics. 25 points



R33E. Fish Cat 4 Deluxe Float Tube:

This float tube features an inflatable seat and backrest for all-day fishing comfort. Its rugged and durable PVC/pack-cloth shell resists tears and punctures. Weight capacity: 250 lbs. 26 points



R33F. CreekKooler 30-Quart Insulated Floating Cooler:

This innovative, towable cooler can hold up to 30-12 oz. cans along with 20 lbs of ice. It also has 4 foam can-sized drink holders, 2 comfortable grip handles, an easy-turn secure lid, and a built-in flag holder/lid tether anchor. Colors may vary. 27 points



R33G. Cabela's The Species XL Ground Blind:

Large enough with plenty of visibility for you and a hunting partner. Extra-large diamond-shaped windows at two corners. Adjustable 180° windows provide maximum visibility. All windows include replaceable shoot-through mesh panels. 27 points



R33H. Centerpoint™ Sniper Elite Whisper Crossbow Package:

This crossbow features quad limbs with CNC-machined cam system, fully adjustable AR-style butt stock, and integrated string suppressors. Can fire bolts downrange at up to 370 fps. 27 points



R33I. Nikon 16-48x60mm

Fieldscope: Waterproof, fogproof, and shockproof! This scope features a 60mm objective lens and 16-48x zoom eyepiece. Includes compact tripod and carry case. 27 points



R34A. Goalrilla Striker Trainer:

This goal offers an instant ball return, so players can take more shots without wasting time retrieving the ball from the net. The skills rebounder side is great for kicking, receiving, heading, trapping and throwing practice. Can be used solo or as a part of team drills. Built for soccer players of all ages and skill levels. 28 points



R34B. Teeter Inversion Table: This machine sets the standard in comfort with patented wrap-around ankle cups for support while the Comfortrak bed optimizes stretch with smooth surface and flexible, countered shape. Teeter is the only FDA-cleared inversion table on the market indicated for back pain, herniated disc, sciatica and more! 30 points



R34C. Konus Night Vision

Binoculars: These highly professional digital night vision binoculars include 3.5x-7x zoom power and an infrared illuminator for total darkness. While using them, you will also be able to take pictures and record movies of what you observe. 31 points



R34D. Napier Sportz SUV Tent:

Featuring a spacious 10' x 10' interior this tent comfortably sleeps up to six adults, plus two additional individuals in the cargo area. Quick set up and an expandable carry bag for easy storage make this a welcome addition to any camping trip. 32 points



R34E. GoPro HERO7 HD Waterproof Action Camera:

Film underwater scenes in 4K with this 12-megapixel action camera. Its HyperSmooth stabilization feature lets you capture shake-free videos, and it withstands submersion up to 33' without a waterproof case. 35 points



R34F. 26" Kent Dual Drive Tandem

Bike: Features a low step-over frame, a 21-speed Shimano drive train, alloy wheels and precision components for a smoother ride. It has an easy step-through frame for easy mounting and dismounting. Additional features include alloy brakes, custom center ridge, precision components and comfortable spring gel saddles. 35 points



R34G. Razor Dirt Quad:

Built strong and sturdy to conquer tough trails and big bumps. Up to 40 minutes of continuous use. Weight limit 120 lbs. Ages 8+. 37 points



R34H. Emotion Spitfire 9' Kayak:

Sit-on-top design allows more freedom of movement, and makes entering and exiting the kayak easier. Paddle ledges to secure paddles and side carry handles for transport and molded-in footwells for comfortable and secure foot-bracing. 43 points



R34I. SportsStuff Fun Station 12'

Trampoline: Features durable PVC construction, an anchor system and a single inflation chamber. 44 points



R35A. 52 Series 300 Watt Cruzin Cooler: This fun cooler that you can ride on holds 24-12oz cans and 8 lbs ice. With a top speed up to 10 mph and a rider capacity of 200 lbs, this cooler will be the life of any party! Battery charger included. 44 points



R35B. Margaritaville® Tahiti Frozen Concoction™ Maker:

A must-have for home entertainers and summer beach house parties, this machine blends up to 72 oz. of frozen concoctions in 3 different blending jars using a fully-automatic operation. 46 points



R35C. Full Size Kegerator and Keg Beer Cooler: This cooler holds temps in the low 30's to mid 40's; Easy conversion to a refrigerator. 5-lb CO2 cylinder included (supplied empty). Dimensions: 48-1/2" (L) x 20-1/10 (W) x 24-13/16 (H). Height includes the draft tower. 46 points



R35D. TaylorMade M6 Driver:

Designed with a new speed Injection process to achieve new distance with maximum forgiveness, this driver features twist-face technology and a sleek, aerodynamic shape. 48 points



R35E. Colorado XTS Pontoon with Swivel Seat:

Featuring 9' pontoons with abrasion-resistant, PVC-coated bottoms, transport wheels and a swivel seat for added mobility, this portable pontoon will have you out on the water in no time. Dimensions: 108" (L) x 56" (W) x 28" (H). Weight limit: 400 lbs. 57 points



R35F. Atomic 9' Shuffleboard Table:

Features a playing surface that has been ply-coated for smooth, quick puck action. A laminated cabinet and pedestal legs with levelers maximize stability and performance. Use the side scoring system to see who comes out on top. 62 points



R35G. Atomic Blazer 7' Air Hockey Table:

This air-powered table has overhang rails, which help reduce puck bounce, leg levelers for various floor angles and flip-up electronic scoring, so your game comes to life! Includes (4) black strikers and (4) black pucks so you'll be ready for hours of intense competition! 63 points



R35H. Conversion II Recumbent Bike/Rower:

This combination rowing machine and recumbent exercise bike is for total body workouts. It features top bar for performing upper body exercises, electronic monitor with large LCD display, 8 levels of smooth, quiet magnetic resistance and hand-pulse sensor built into grips. 65 points



R35I. Silverback In-Ground Basketball Hoop:

The 2-piece pole comes with a DuPont powder-coated finish to protect against the elements and a pole pad that helps protect players should they impact the pole. The clear backboard is made from durable tempered glass and comes with a break-away rim that withstands intense play. 68 points



R36A. Avari Programmable Stepper: Motorized for smooth, comfortable resistance that is easy on the joints. An InTouch electronic monitor with 20 different programs includes: manual, 12 preset programs, body fat program, target heart rate program, heart rate control and 4 user programs to choose for training. A high quality stepper with wide self-leveling foot pedals allows for an easy stepping motion with added comfort and stability. 82 points



R36B. Vuly Lift Pro Trampoline with Ladder: The durable, ultra-fine netting features easy, self-closing access with 10 feet of jumping room. Dual ring frame and poles are powder-coated and heat-treated for superior resistance to rust and weather. 86 points



R36C. Traditional Mahogany Foosball Table: Made with all wood construction that features carved Queen Anne-style legs and veneer inlay cabinets. Other features include a recessed score unit, 3-man goalie, solid wood handles, 5/8" rods with chrome finish and realistic hand-painted players. 87 points



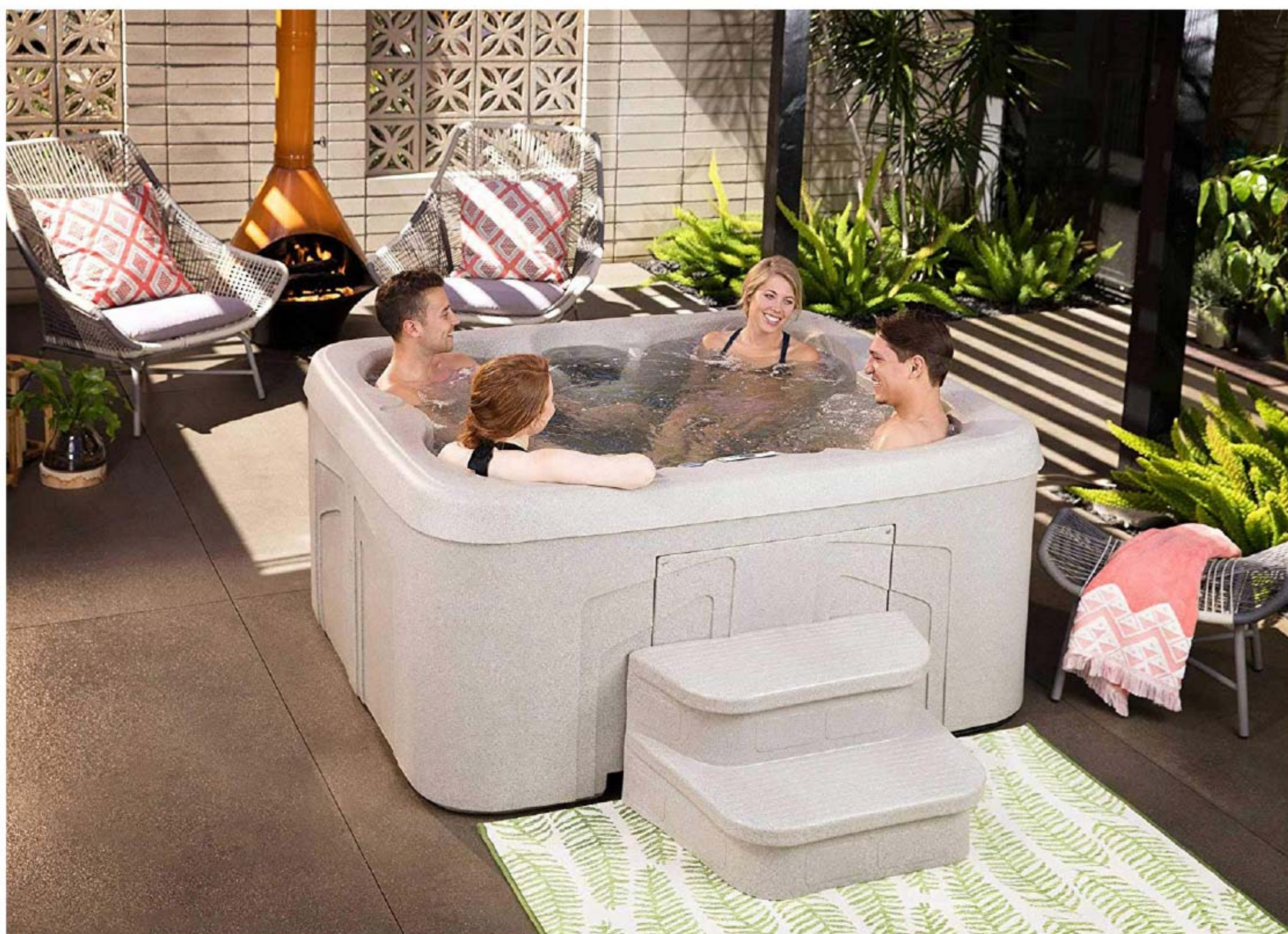
R36D. TaylorMade M6 Iron Set: Features Speed Bridge iron performance technology for low-frequency, explosive distance and maximum forgiveness. 8-piece set includes 5-PW, AW and SW. 93 points



R36E. Minn Kota® Ulterra™ 80 US2 iPilot® AAQ Bow-Mount Trolling Motor: Features auto stow and deploy that lets you get your motor in and out of the water automatically using the foot pedal. iPilot uses GPS to remember fishing spots and control speed. 160 points



R36F. Mahogany 54" 3-in-1 Game Table Set with 4 Rocker Swivel Chairs: This 3-in-1 game table offers a removable flip top with dining on one side and a felted gaming surface on the other. 187 points



R37A. 4-Person Plug and Play Hot Tub Spa with Cover and Steps: This 4-person capacity hot tub spa features 13 jets, 4 bucket seats, and plugs into any standard outlet with digital topside control center for jets, temperature and lighting. 192 points



R37B. Life Fitness T3 Treadmill: For advance home-training, this treadmill features an advanced workouts console, 3 HP continuous-duty motor with up to 12 MPH speed, contact heart rate hand sensors and a polar wireless HRM chest strap. GoSystem Quick Start feature remembers your preferred walk, jog and run speeds. 192 points



R37C. G7 Home Gym: This home gym offers exclusive features that allow you to build your own training workouts, track your progress and follow-along with our own certified personal trainer. 203 points



R37D. Life Fitness Club Series Elliptical Cross Trainer: This cross trainer features Apple and Android charging, synchronized upper and lower body movement and an ergo grip stationary handle bar to provide stability during lower body workouts. 249 points



R38A. Polaris Outlaw 50: Perfect for young drivers ages 6 and older with adult supervision, delivers reliable performance and standard safety features. Comes standard with one youth helmet, safety tether, daytime running lights, safety whip flag, speed limiting adjuster, and a training DVD. 347 points



R38B. Dutchess 8' Pool Table with Accessory Pack: Features coordinating leather pockets and choice of fringe or shield. Bolt-together, metal-to-metal construction includes interlocking super beams and wide top rails with inlaid diamond sites. It also features full 1" thick, diamond-honed, framed slate and warm chestnut finish with camel cloth. 262 points



R38C. Polaris Outlaw 110: Perfect for young drivers ages 10 and older with adult supervision, delivers reliable performance and standard safety features. Comes standard with one youth helmet, safety tether, daytime running lights, safety whip flag, speed limiting adjuster, and a training DVD. 347 points



R38D. Polaris Sportsman 570: The powerful engine and reliable performance you need to get more done around your home and property or take on the toughest terrain. Purpose-built 44 HP ProStar® 570 engine with dual overhead cams and Electronic Fuel Injection (EFI) keeps you moving in any weather. 593 points



R39A. Polaris Ranger 570: The most powerful utility side-by-side in its class delivers all the hardest working, smoothest riding performance you expect from a Ranger. With best-in-class power, towing, and payload capacity to go with refined comfort to work all day, you'll have everything you need to tackle the tough jobs. 917 points



R39B. Polaris 550 Voyager® 155:

This snow mobile is for riders looking for an all-purpose sport-utility snowmobile, plus the reliable performance and great value of the fan-cooled, durable 550 engine. It features articulated rear suspension, 155 x 1.6" cobra track, PRO-Float skis, an electric start and a cargo rack and hinged hitch. 768 points



R39C. Polaris Ranger Crew-4 570:

Provides room for 4 with 44 HP of the best-in-class utility power. Electronic Fuel Injection (EFI) keeps you moving in any weather. True on-demand all-wheel-drive gives you the traction you need when you need it. VersaTrac Turf Mode for tighter turns that won't tear up your lawn. 963 points



R39D. Polaris Crew 1000 EPS:

Legendary ride and handling. More power than any other utility side-by-side in the world with room for 6 to bring the whole crew to the job site, hunting cabin or out on the trails. High-performance true on-demand all-wheel-drive gives you unmatched traction. 1,497 points



T40A. Shopvac 2¹/₂ Gallon, 2¹/₂ Peak HP Portable Wet/Dry Vacuum: Mounts on wall for convenient storage. 12 points



T40B. Bosch 65' Laser Measurer: Delivers laser precision technology and real-time measurement mode, taking instant and reliable measurements up to 65' so one person can size up the job in seconds. 12 points



T40C. Shop-Vac 5 Gallon, 2¹/₄ Peak HP Wet/Dry Vac: Fold down top carry handle. Powerful 2¹/₄ Peak HP Shop-Vac built motor. Accessories include 7' x 1¹/₄" hose, extension wands and 10" wet/dry nozzle. 12 points



T40D. Wenzel Mummy Sleeping Bag: This 34"(W) x 84"(H) sleeping bag has a 15 degree temperature rating and is stuffed with 3.8 lbs of Dura-Temp. 12 points



T40E. Travel Safety Kit: Includes anything you could ever need on the road, including a tool kit, first aid kit, jumper cables, tow rope, air compressor and much more! 12 points



T40F. Multifunction Power Bank PowerStation: All-in-one portable unit combines intelligent booster cables w/ a high performance power bank, suitable for everyday use or emergencies. Powerful 7200 mAh Li-ion battery can jump start a dead vehicle battery and charge all of your electronics including most smartphones, tablets, laptops, etc. 12 points



T40G. Buck 6" Hunting Knife: Features 6" blade with 420HC steel. Overall length 10¹/₂". Solid, fixed-blade knives are great for the outdoors. Includes genuine leather sheath. 12 points



T40H. Shop-Vac 6 Gallon, 2³/₄ Peak HP Wet/Dry Vacuum: Quiet operating. Top carry handle. Easy reach on/off button. Rear blower port. On-board tool storage. 12 points



T40I. Pro-Lift Floor Jack and Stand Combo: Features heavy duty steel construction, molded storage case, carrying handle on jack and swivel casters for easy positioning. A pair of ratcheted 2-ton jack stands are included to safely support your lifted vehicle. 12 points



T41A. Waterloo 3 Drawer Portable Tool Chest:

Features 25 lb. full-extension friction drawer slides to easily access every drawer, top tray, lockable latch and rust resistant latches. 12 points



T41B. Wagner Smart Side Kick Power Roller: Features Wagner's innovative direct-feed roller system that pulls paint directly from a 1 to 5 gallon container continuously feeds the paint roller for productive drip-free, non-stop painting. The SMART SideKick comes with (1) 9³/₈" nap Wagner roller cover, and (1) adapter for 5-gallon containers. 12 points



T41C. Waterloo Portable Series 3-Drawer Metal Tool Chest:

Keep your tools handy and organized in this American-made storage chest. It features full-extension 25 lb. friction drawer slides, a top tray for additional storage and full-width piano hinge pins for trouble-free opening and closing. Measures: 8.5"(D) x 20.5"(W) x 12"(H). 12 points

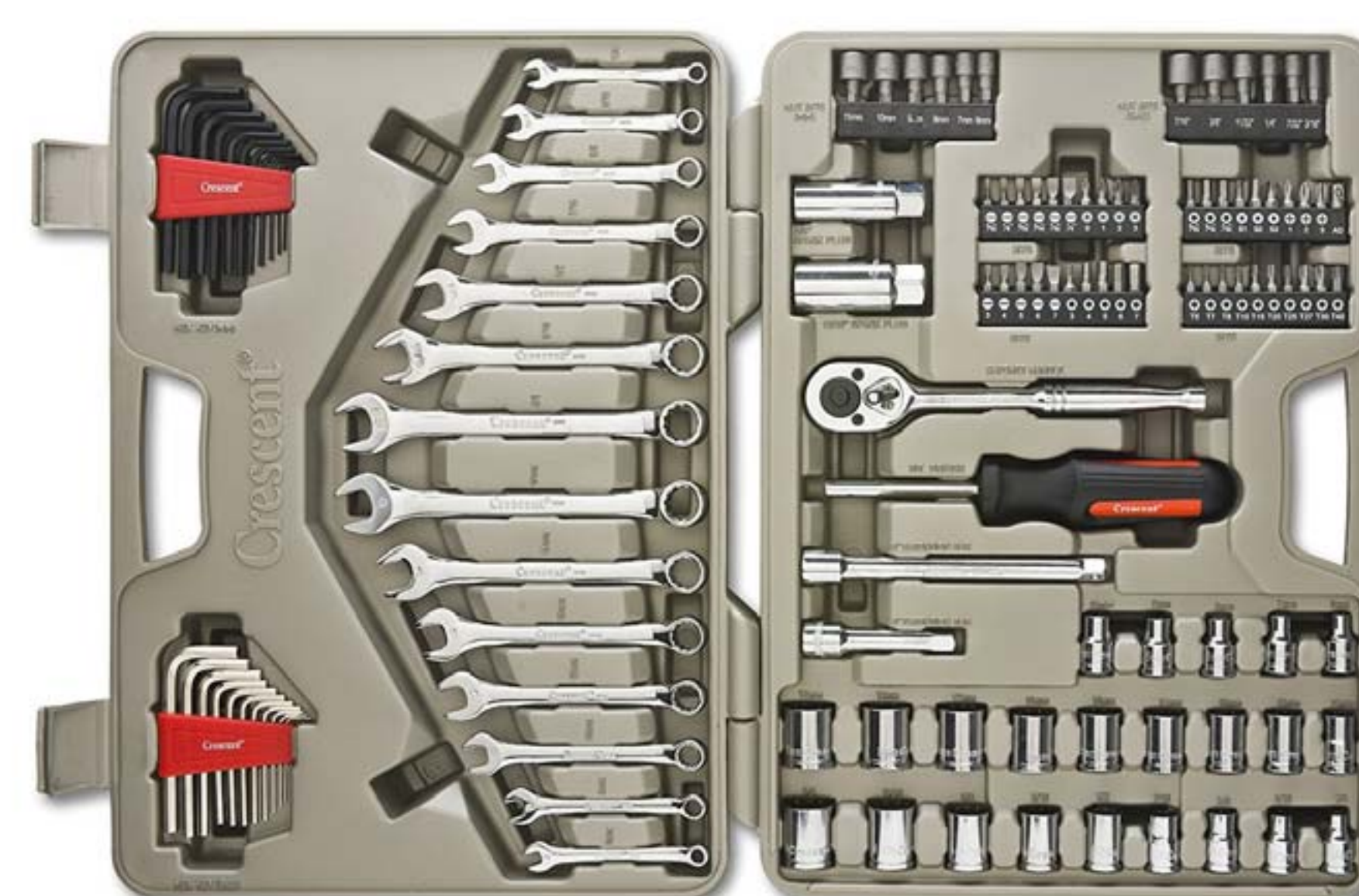


T41D. Shop-Vac Ash Vacuum:

Perfect for cleaning coal, wood or pellet stoves. Includes HEPA cartridge filter. Thermally protected in case of overheating. 12 points



T41E. 235-Piece Mechanic's Tool Set: This tool set comes with a full array of SAE and metric sizes and includes a large assortment of sockets, wrenches and common tools as well as an 8' 100-amp set of jumper cables. 12 points



T41F. Crescent® 128-Piece Tool Set: Includes quick release ratcheting drive ratchet, (12) point sockets, (12) combination wrenches, durable and portable storage case and more! 12 points



T41G. US Army 20-60x60 Spotting Scope: Designed for sportsmen, bird watchers, boaters, hunters and camping enthusiasts. Highly-durable rubber armor is waterproof and protects optics from the elements. Fully-coated optics and K9 Porro Prism deliver impressive lens clarity. Additional features include powerful 20x to 60x zoom, with 60mm objective diameter; includes carry case, built-in shading tube and tripod. 12 points



T41H. Crescent® 148-Piece Tool Set: Deluxe assortment of hand tools with durable storage case. 12 points



T41I. King Kooker Two-Pot Frying And Boiling Package:

This portable, propane outdoor cooker features an LP hose with an adjustable regulator to help you adjust the flame from the high-pressure and a 33,000 BTU cast burner. It comes complete with a turkey pot, frying pan and accessories. 12 points



T42A. Dremel Ultra-Saw Tool Kit: With a 7½” amp motor and a durable drive train, the Ultra-Saw™ has more power for making long cuts. A metal foot and guard resists the heat generated by heavy-duty jobs like grinding and cutting metal. Large, 3½” and 4” cutting wheels provide fast cutting speeds and improved performance in a wide variety of materials. 12 points



T42B. Deluxe PowerStation: Features air compressor, 200W inverter 12V power outlet and USB port for charging mobile devices. 13 points



T42C. Garmin Striker 4 Fish Finder: Mark and return to your hot spots, boat ramps and docks, and share your favorite waypoints and routes with other Striker and echoMAP™ combos. Smooth Scaling™ graphics provide uninterrupted imagery when switching between depth-range scales. 13 points



T42D. McCulloch Canister Steam Cleaner: Steam on demand with jet nozzle, squeegee, several brushes and 10’ hose. 14 points



T42E. Crescent 170-Piece Tool Set: Contains ratcheting drives and a selection of standard and deep sockets in the most common sizes. 14 points



T42F. Dremel High Performance Rotary Tool Kit: This rotary tool offers the highest performance and most versatility of all Dremel rotary tools. The increased strength of its motor plus electronic feedback circuitry enable consistent performance at all speed levels. A slim, ergonomic body provides a 360-degree grip zone for comfort and control in any grip position. 14 points



T42G. Shop-Vac 16 Gallon, 6½ Peak HP Pump Vac: This Shop-Vac pumps up to heights of 50’ at up to 6 gallons per minute and offers a powerful 6½ Peak HP Shop-Vac-built motor, tank drain, cartridge filter and collection filter bag. 15 points



T42H. Bushnell 24MP Trophy Cam HD Low Glow Trail Camera with Color Viewer, Camo: Features lightning-fast 0.2S trigger speed, incredible 0.5S recovery RATE, 100’ detection distance, pre-set menus and backlit 5-way buttons for easy setup and true 1-year battery life for all-season scouting. 15 points



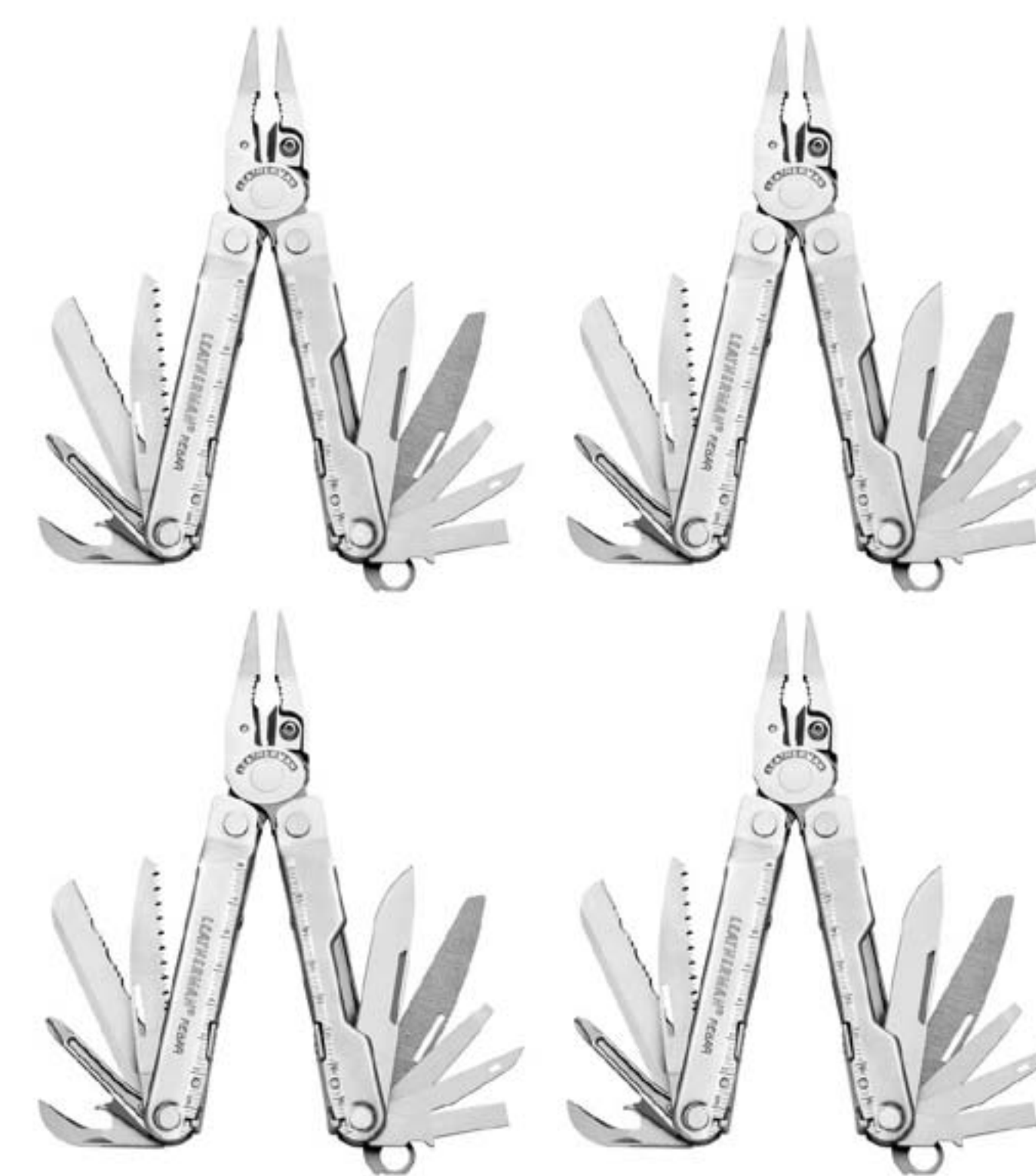
T42I. Whistler Laser/Radar Detector: Features bilingual English or Spanish text display and real voice alerts, “Ka Max Mode” and RSID for ultimate protection. Advanced false alert detection system eliminates alerts from sources such as traffic flow sensors and collision avoidance systems. 16 points



T43A. Whistler 2000 Watt Power Inverter: Features 3 AC outlets plus 2 USB ports for powering/charging devices such as game systems, laptops, and more, digital volt/watt meter for monitoring power usage. 17 points



T43B. ProFusion Heat Ceiling-Mount Shop Heater: This heater offers powerful and efficient heat for garages, basements or job sites. Featuring 25,590 BTU and 240 Volts, this heater can heat up to 750 square feet. 18 points



T43C. 4 Pack of Leatherman Rebar Multi-Tool: This compact multi-tool can conquer even your hardest jobs. It includes pliers, a knife blade, screwdrivers and more with gripping edges to help maintain a firm grasp on fuses, small cables and hard-to-reach items. 19 points



T43D. Strongway Garage Bay Fan: This large fan has a 24" diameter and 1/6 HP. Its heavy-duty, direct drive motor and aluminum blades will keep things cool and clean while adding circulation to your work space. 19 points



T43E. Konus 60x80 Zoom Spotting Scope: Includes multi-coated optics, a table tripod, smartphone adapter, camera adapter and protective professional case. 19 points

T43F. Blue Rhino Black Firehouse With Chimney:

Featuring a large chimney, this black outdoor firehouse effectively directs smoke and ash up and away for superior exhaust control. With its classic black finish and durable steel grate, roaring fires can easily be viewed from all sides. A removable ash receiver allows for easy tending and cleaning. No tools are necessary for assembly. 19 points



T43G. Bosch Power Box™ 360 Jobsite AM/FM Stereo: This rugged stereo system with protective roll cage offers 4-way power outlets, 12V DC adapter, AM/FM radio. A high-performance weather-resistant, 4-speaker system with an integrated subwoofer produces high-quality enriched sound in 360 degrees. Includes a USB port and SD/MMC card slot and 2 auxiliary inputs. Battery not included. 20 points



T43H. 28" Griddle Cooking Station: With easy assembly, this cooking station features a 28"(W) x 16"(H) cooking surface, a quick ignition button, a removable griddle top, a sturdy, powder-coated steel frame and 2 commercial-strength, locking caster wheels. Solid, long-life cast iron burners. 21 points



T43I. Bushnell® Cellular Trail Cam: Features 20MP HD images, 1080 HD videos, 6-month battery life. Easily connects to a smartphone. 21 points



T44A. The Tailgater Combo:

Features easy portable setup, powerful 30,000 BTU per burner for a total of 60,000 BTU, electronic ignition built into each burner, heavy-duty grill box with vent, handle and durable cast iron grill grates. Rugged and portable steel griddle. 21 points



T44B. Northern Tool Flush Mount Truck Tool Box: This easy-to-install, diamond plate, aluminum box sits below the truck bed rails, leaving plenty of room for additional storage space in your truck bed. Dimensions: 48½"(L) x 13"(W) x 11½"(H). 21 points



T44C. Car Top Cargo Carrier:

Measuring 56½"(L) x 38¾"(W) x 19"(H), this roof box mounts to your crossbars with U-bolts and hand knobs. Locking lid opens from the rear. Carries camping gear, sports equipment, and other cargo on small to mid-size vehicles. 22 points



T44D. Shop-Vac 2000 CFM Stainless Steel Air Circulator:

14" diameter, stainless steel fan with a 30' power cord. 1/3 HP wheels and telescopic handle for easy transport. 2000 CFM on high. 3 speed settings. 22 points



T44E. Firman Performance Series 1200W Standard CSA Generator:

Featuring up to 10-hour runtime, it is the largest tank in the industry with integrated fuel gauge and quiet muffler. Includes oil, oil funnel and tool kit. 23 points



T44F. Skil 12" Compound Miter Saw with Quick-Mount:

This saw includes a laser, extension rails and a powerful motor. Integrated handles provide easy transport while the dust bag helps keep work area clean. 24 points



T44G. Wagner Flexio HVLP Paint Sprayer Station:

Covers an 8' x 10' wall in 5 minutes with unthinned latex paint. Sprays up to 8.4 gallons per hour. Comes with the iSpray nozzle, detail finish nozzle and 11½' air hose, all stored in the X-boost power box. 24 points



T44H. Echo 17" 21.2 cc Gas Trimmer:

Features a 17" cutting width, 2-cycle 21.2 cc power boost vortex engine that uses a mix of gas and oil for powerful operation, and a speed-feed trimmer. 25 points



T44I. Yeti Hopper 20 Soft Side Cooler:

Features room for 12 cans, sturdy handles and a leak-proof design. 25 points



T45A. Echo® Backpack Style Power Blower:

Provides exceptional performance with a low-noise level. The 25.4 cc professional grade engine produces 375 CFM and 158 MPH at the nozzle at only 64 dB (A). 25 points



T45B. Blue Rhino LP Gas Outdoor Firebowl with Slate Tile Mantel:

Decorative base cleverly conceals a propane tank (not included) and control panel, making it an attractive centerpiece for your outdoor living space. Complete with a 30,000 BTU stainless steel burner. 25 points



T45C. YETI® Coolers Tundra 65

Marine Cooler: Features never-fail hinge system, heavy-duty latches, freezer-quality gasket and easy towability. Available in tan. 30 points



T45F. Seasoned Pro Tailgating Package:

Comes with (4) folding banquet chairs that have a 450 lb. capacity with sturdy side table for your plate and a cup holder, small charcoal kettle grill-14"(L) x 14"(W) x 18"(H), heat-resistant glove, spatula, tongs, knife with blade cover and corkscrew/bottle opener and a cooler. 34 points



T45D. Troy-Bilt Gas Cultivator with Spring Assist™:

Features 6 premium, forward rotating tines that loosen and cultivate soil, getting you ready to plant the garden of your dreams. Tilling widths from 6" to 12", tilling depth of up to 5". 31 points



T45E. The Bose® Free Space® 51 Outdoor Speakers:

Bring the subtle nuances of your favorite music to life in outdoor environments. Ideal for placement in the garden or on the deck or the patio. Connect them to your existing stereo receiver and enjoy natural sound throughout a broad listening area. 32 points



T45G. Echo® 20" Chain Saw:

Delivering power, quality features, and a performance cutting system, this chain saw comes with a 20" performance bar and chain, and has a heavy-duty, easy-access air filtration system. 35 points



T45H. Masterbuilt 40" Electric Smoker with Bluetooth:

With integrated Bluetooth technology, control your smoker with your smart device! Features 975 square inches of cooking

space and 4 chrome-coated smoking racks. The 1,200-watt heating element will provide consistent smoking up to 275 degrees. 36 points



T45I. Firman Gas Powered 3650/4550 Watt Extended Run Time Portable Generator:

Featuring the Firman OHV engine that provides longer life/higher performance/lower maintenance, the engine is cast iron-sleeved for long durability with automatic low oil shutdown protection. This generator has a conveniently located multi-featured control panel, is easy to use and features a quiet whisper series muffler. 36 points



T46A. Broil King Vertical Charcoal Smoker: Features 770 sq. in. total cooking surface, (4) fully adjustable cooking grids, (1) multi-purpose roast/rib rack, Roto-Draft damper technology, Accu-Temp thermometer and (16) stainless steel meat hooks. Double-walled construction secondary door for easy access to the extra large stainless steel water bowl and smoker box. 40 points



T46B. Cub Cadet Rear Wheel Drive Self-Propelled Mower: Features flawless performance with the patented CycloCut™ System to deliver the Cub Cadet Signature Cut™ time after time. High performance MySpeed™ Premium Drive Control System offers smooth engagement and superior speed variability based on terrain and walking speed. Caster wheels give you zero-turn capability in a walk-behind mower. 41 points



T46C. Champion 3000 PSI Pressure Washer: Provides dependable, portable cleaning power for ATV's, RV's, boats, siding, fences, decks, driveways and more. CARB approved for all 50 states. 41 points



T46D. EGO 21" Single-Stage 56-Volt Lithium-Ion Cordless Electric Snow Blower: This blower delivers the torque of gas without the noise, fuss or fumes. It throws snow up to 35' and the handle folds flat in seconds for compact storage. 49 points



T46E. Truck Pac 12/24 Volt Jump Starter: Flip the switch to select 12 Volt or 24 Volt power. This jump starter has dual high-performance ES Series AGM batteries and extra-long 60" cables with industrial-grade Hot Jaw™ clamps. Features a 12-Volt outlet for on-the-go power. Includes wall charger and 12-Volt vehicle charging cord. 49 points



T46F. Champion 10,000 lb. Winch Kit: Includes a Speed Mount™ 2" hitch adapter, 4-way roller fairlead, snatch block, 6' quick connect battery lead and a handheld remote. 51 points



T46G. Blue Rhino Commercial Outdoor Patio Heater: This heater lets you take advantage of outdoor space at your home or business all year long. Keep an area up to 20' in diameter nice and toasty for your guests with 40,000 BTUs of adjustable, propane heating. 54 points



T46H. EGO POWER+ 56-Volt Lithium-Ion 20" Self-Propelled Mower: This mower delivers the torque of gas without the noise, fuss or fumes. Features a 20" steel deck, a 60-minute runtime and a variable-speed, self-propelled system. 59 points



T46I. Strong Hand Tools FixturePoint Table: Table and tool kit includes 24-piece startup kit. 59 points



T47A. Ingersoll Rand Electric Portable Air Compressor 2 HP, 115 Volt, 30-Gallon: Features durable cast iron construction and wheels for easy transport. 74 points



T47B. Broil King Keg® 5000 Ceramic Charcoal Grill: This innovative charcoal grill features double-walled steel body with high-grade insulation. This technologically advanced design keeps the heat in, creating a very efficient, thermal convection-style oven while delivering superior cooking performance. 75 points



T47C. Powerhorse Chipper/Shredder: This chipper/shredder is a great way to quickly turn yard waste into ground cover for gardens or trees. The highly effective, commercial quality cutting mechanism uses 2 hardened chipping knives, 10 hammers and 10 shredding blades. It features dual feed and 420cc engine with electric start. 93 points



T47D. Broil King The Regal™ S400 PRO Series Gas Grill: Features 500 sq. in. primary cooking surface, solid stainless steel 9 mm rod cooking grids, stainless steel Flav-RWave™ cooking system, (4) stainless steel Dual-Tube™ burners, stainless steel side shelves and an enclosed cabinet base. 96 points



T47E. Bannon Utility Trailer: This handy trailer features a large 60"(L) x 30"(W) steel bed to haul loads up to 1600 lbs. Flared side panels effectively contain the load but are removable for increased capacity when hauling bulky loads. Some assembly required. 93 points



T47F. Orien Refrigeration Outdoor Stainless Steel Refrigerator: A 24" stainless steel refrigerator that is UL-approved for outdoor use, it features automatic defrost and uses a fully enclosed back to keep out the rain and any outdoor pests. It comes with a built-in light, door lock and glass shelving. 107 points



T47G. Quincy 60-Gallon Vertical Reciprocating Air Compressor: Built for efficiency and lower operating costs, it produces more compressed air at a lower horsepower. The 5 HP, 230V, 1-phase compressor boasts a 50,000-hour pump life rating. 127 points



T47H. Klutch MIG Welder with Multi-Processes, Spool Gun, LCD Display and Cart: Features LCD interface control that allows easy welder setup. This multi-process welder offers superb versatility, performing a variety of welding processes on metals up to 1/2" thick from a single unit. 130 points



T47I. Hobart AirForce 40i Plasma Cutter: 4-Person Plug and Play Hot Tub Spa with Cover and Steps: This 4-person capacity hot tub spa features 13 jets, 4 bucket seats, and plugs into any standard outlet with digital topside control center for jets, temperature and lighting. 132 points



T48A. Troy-Bilt Riding Lawn Tractor: This lawn tractor is both durable and dependable. The 46" cutting deck can be adjusted up or down for a precise cut every time. 5-position height adjustment and features 2 deck wheels help prevent scalping. 142 points



T48C. Troy-Bilt Vortex Tracker 3-Stage Snow Blower: With a 28" clearing width, this snow blower breaks down the heaviest, wettest

snow and ice. Features include a powerful 357 cc 4-cycle engine, easy push-button electric start, self-propelled all-wheel-drive and a 12" serrated steel auger. 150 points



T48E. Cub Cadet 42" Lawn Tractor: Features category-leading strength, comfort and versatility. Loaded with a powerful performance engine and hydrostatic transmission for smooth and simple operation that eliminates the need for shifting. Just push the pedal and go. The 42" deck and 16" turning radius can maneuver around obstacles with ease. 173 points



T48B. SnowBear Personal Snow Plow: This 82"(L) x 19"(W) plow features skid shoes to enhance performance over gravel, soft surfaces and uneven terrain. It lets you remove snow 50 times faster than conventional snow throwers. The included wireless remote control provides convenient control from inside your vehicle. 145 points



T48D. NorthStar Tow-Behind Trailer Boom Broadcast and Spot Sprayer: This trailer includes deluxe trigger spray gun, 9 nozzles, 13' boom and 21' hose. 101-gallon capacity, 7.0 GPM, 12V DC. 159 points



T48F. Troy-Bilt Deluxe Log Splitter: With heavy-duty construction, cast-iron splitting wedges and tons of RAM force, this tow-able machine will quickly make a stack of firewood out of even your largest trees and logs. 175 points



T49A. Troy-Bilt EZT Zero Turn Mower with 46" Deck:

Features an electric PTO and dual EZT transmission. Complete with an 18" high back seat for added comfort a reinforced heavy-duty frame and front axle and ergonomic lap bars. 260 points



T49B. Honda 7000i Watt Super Quiet Series Generator:

This generator can operate a wide variety of appliances, making it perfect for portable use at home, camping, and more. Smart electronic fuel injection technology

reduces maintenance and increases efficiency. This generator runs 6-18 hours per tank, depending on the load. 423 points

T49C. Lincoln Electric Power MIG 350MP Multi-Process Welder:

Welds aluminum via push gun, spool gun or push-pull gun methods. Multi-process capabilities includes MIG, flux-cored, stick, TIG and pulsed MIG. 425 points



T49D. Easy Auger Hydraulic Earth Auger:

This auger has a self propulsion system and features 270cc engine and 350' lbs. of torque. 465 points



T49E. NorTrac Mini Compact Hauler with Hydraulic Shovel:

This powerful machine helps you quickly and efficiently move material around a property or jobsite with its 20 HP gas-powered engine and large capacity that holds up to 17.7 cu. ft./2200 lbs. of material. The front-loading hydraulic shovel turns material-moving into a 1-person job. 1,113 points



T49F. NorTrac Bulldozer: This powerful, 4-cylinder bulldozer features a 35 HP diesel engine, 8-forward and 2-reverse speed transmission to provide the right gear for any situation. With a Category 1 rear hitch, the dozer can be used with implements such as a backhoe, cultivator and more. Includes a heavy-duty seat and easy-to-use controls. 1,767 points



G50A. Ruger Mark IV Double 22 Long Rifle: Features a recessed button, aerospace-grade aluminum making the pistol extremely light. Also, it has checkered grip panels and a non-slip hold. Guns ship to your specified FFL dealer. Not available in California. 60 points

G50B. The Smith & Wesson M&P Bodyguard .380 ACP Pistol:

This double-action pistol with a 6+1 magazine capacity features a crimson trace laser sight as well as stainless-steel, drift-adjustable front and rear sights. Stainless-steel barrel with a matte finish. Guns are delivered to your specified FFL dealer. Not available in California. 81 points



G50C. Weatherby Element Deluxe Semi-Automatic 20 Gauge Shotgun: 28" Barrel, 3" Chamber, Walnut Stock/Black. Guns are delivered to your specified FFL dealer. 82 points



G50D. Remington Model 700 SPS Tactical Rifle: Features superior accuracy, adjustable trigger, 20" matte black barrel and .308 caliber. Guns are delivered to your specified FFL dealer. 85 points



G50E. Smith & Wesson Model 63, .22LR Stainless Steel Revolver: With an 8 shot, 3" barrel built on a stainless-steel J-frame and chambered in 22 long rifle, this lightweight revolver is compact enough for comfortable carry and perfectly balanced for easy shot placement. Guns are delivered to your specified FFL dealer. 95 points



G50F. Colt Single 45 Automatic Pistol, Rosewood Grip, Blued Carbon Steel: Features a long trigger, flat mainspring housing and original style recoil spring. Guns ship to your specified FFL dealer. 98 points

G51A. Smith & Wesson M&P 340 CT, Revolver, .357 Magnum:

Features a scandium alloy frame that doesn't add weight while enabling the revolver to still fire powerful loads. Plus, it's equipped with a Crimson Trace Lasergrip® to help you aim from any shooting position. Guns are delivered to your specified FFL dealer. 117 points

**G51B. Winchester Super X4 Universal Hunter Shotgun 12 Gauge 3.5"**

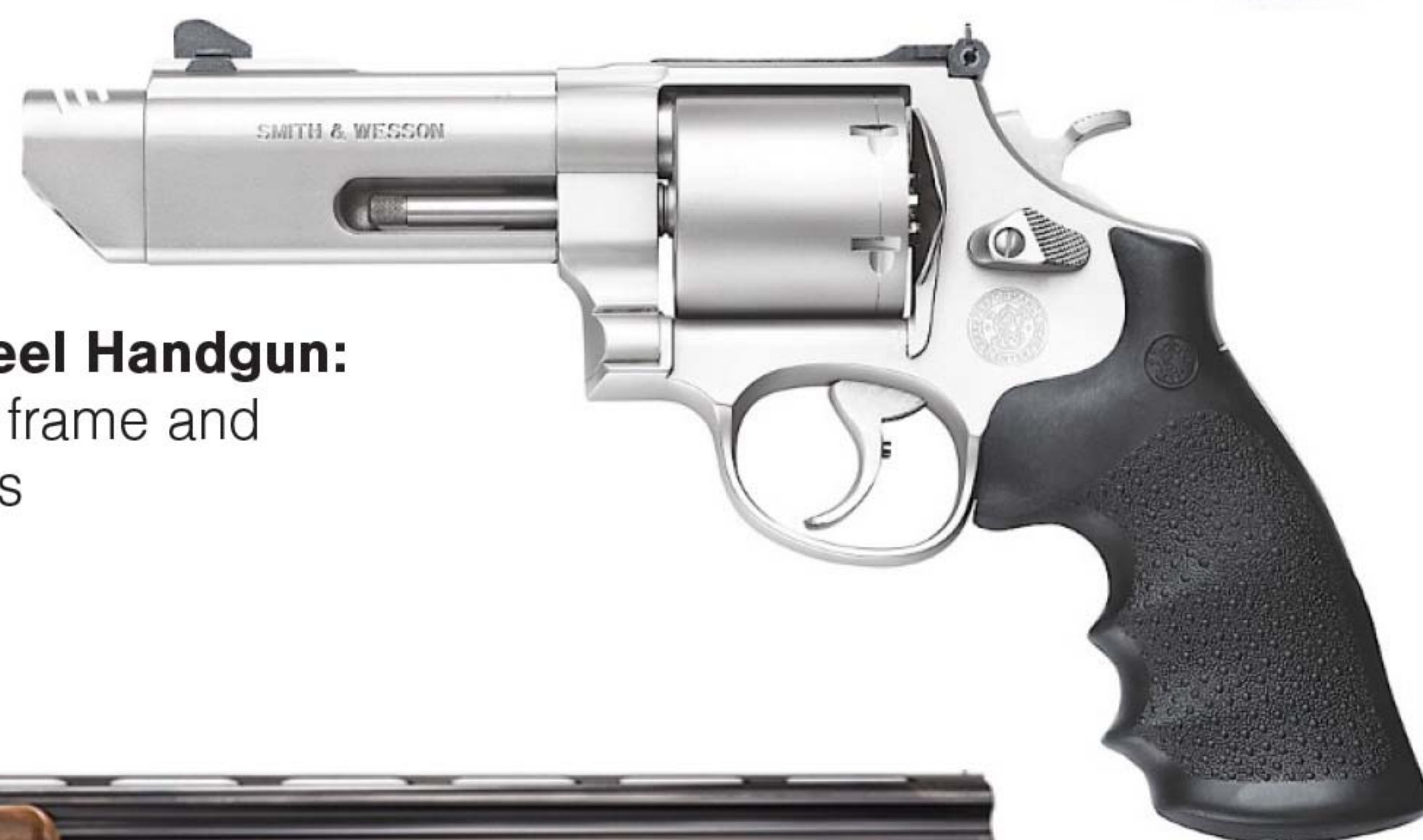
Chamber: Synthetic Stock gives your hands a sure, non-slip grip. Full coverage Mossy Oak camo finish means your shotgun will help give you ultimate concealment. Guns ship to your specified FFL dealer. 117 points



G51C. Ruger M77 Scout Bolt-Action Rifle: This lightweight and fast handling rifle features .308 caliber, black matte with blued finish and 16.5" barrel. Guns are delivered to your specified FFL dealer. 123 points

**G51D. Smith & Wesson Single/Double 357 Magnum Revolver:**

Features 5" barrel with black synthetic grips and black stainless steel frame. Guns are delivered to your specified FFL dealer. 146 points

**G51E. Smith & Wesson 629 Performance Center Stainless Steel Handgun:**

This .44 magnum handgun has a 4.25" barrel and a stainless steel frame and cylinder. Guns are delivered to your specified FFL dealer. 146 points

**G51F. Beretta Silver Pigeon Over/Under 20 Gauge Shotgun:**

Features 28" barrel, walnut stock. Guns are delivered to your specified FFL dealer. 193 points

2019

Dealer Awards

How Can We Earn Your Business?

Venture Off the Beaten Path with Preferred Pump Next Season!

MAUI

JANUARY 2020

Enjoy 7 days and 7 nights at
the Hyatt in Lahaina on the
west coast of tropical Maui

Cruise

FEBRUARY 2020

Enjoy 7 days and 7 nights on
the Royal Caribbean Symphony
as we travel to St. Kitts,
St. Thomas, and The Bahamas

VEGAS

DECEMBER 2019

Enjoy 4 days and 4 nights at
Treasure Island Hotel & Casino
in glamorous Las Vegas

ASK YOUR LOCAL BRANCH FOR MORE INFO

Includes Room and Roundtrip Airfare for Two.
Registration Starts in January 2019.

See Ya' There!



PREFERRED PUMP

www.preferredpump.com

PROGRAM DATES

The 2019 Preferred Pump Dealer Awards Program is effective for purchases shipped and invoiced between January 1, 2019 and December 31, 2019.

ELIGIBILITY

This award/rebate program is open to all Preferred Pump customers who enroll by completing, signing, and returning the enrollment form. Enrollment forms must be signed by a principal (officer, owner, or manager only) of the firm, and must be received by Preferred Pump no later than March 31, 2019. The account must remain in good standing and within payment terms throughout the entire program period.

EARNING RATE AND RESTRICTIONS

Enrolled customers will earn award points at the rate of one point per \$1,000 in program period purchases. Eligible purchases must be shipped and invoiced by December 31, 2019 in order to qualify for points.

ROLLOVER POINTS

Points can be rolled over for only one year and ONLY for the "Big Trip". This means that any points you earned in 2018 may be rolled over and applied to the 2019 Dealer Awards Program "Big Trip" for the trip to Maui, which is January 5th - 12th, 2020 *and/or* the Caribbean cruise, which is February 8th - 15th, 2020. However, points may be rolled over for one year only and cannot be "banked" over a several year period. Rolled over points do not have any value except when used in conjunction with the "Big Trip". You can roll over any amount of points and redeem the rest for products from the 2019 Merchandise Catalog simply by filling in the rollover box on your Award Certificate with the amount of points you would like to rollover.

BUY-IN OR PURCHASE OF POINTS PROVISION

Preferred Pump customers enrolled in the program who earn at least 60% of the award point value by the program conclusion may supplement their point totals by purchasing the balance of the needed amount. Points are redeemed and applied on a first come, first serve basis for each award. As an example of a buy-in: If a trip is worth 260 points, you need to have earned 60% (or 156 points) through sales in order to qualify for purchasing the remaining points. The price or cost per point is \$26 for Maui and the Caribbean Cruise and \$22 for Las Vegas. However, we will provide you with the anticipated cost upon request. When you purchase points, you may not earn points from the purchase total.

TRAVEL LIMITATIONS

Travel on Preferred Pump trips is open to employees and their dependents of our customer's firms. Preferred Pump management must approve any guest substitution. Participating customers are also required to agree to the terms of the limit of liability statement provided for each trip, and understand that these must be signed and returned prior to the issuing of any travel documents. In the event that the number of awards earned exceeds the space reserved, Preferred Pump reserves the right, at our discretion, to substitute with the same or similar trips.

NON-CANCELLATION DATES

It is not possible for Preferred Pump to cancel trips to Las Vegas, Maui, or on the cruise after August 15, 2019. Cancellation after this date will void all point earnings. Points cannot be used for alternate trips or prizes if cancellations are received after the deadline. Preferred Pump reserves the right to invoice companies for any fees incurred due to late cancellations.

LIMITATION OF REDEMPTION

All of a customer's Preferred Pump accounts must be within terms to earn points during the program period. Customer's accounts must be current by December 31, 2019 or points will be null and void and trips and prizes will be forfeited.

RIGHTS AND LIMITATIONS

Preferred Pump reserves the right to modify or cancel the program due to circumstances beyond our control. We reserve the right to allow, modify, or disallow point earnings for purchases that fall under the categories of bid, contract, and/or special discount business.

Travel Form Deadline: August 15, 2019

Last Day to Add, Drop, Revise Travel: August 15, 2019

For more information, contact your local Preferred Pump sales representative!



PREFERRED PUMP

*We Would Like to Thank You for All of Your Support.
We Really Value Your Friendship.*

Place Your Order Online: www.PreferredPump.com/Merchandise

