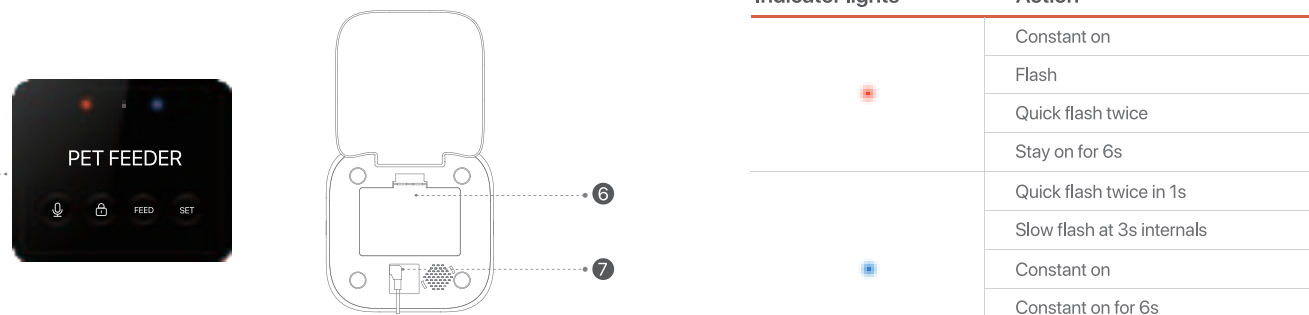


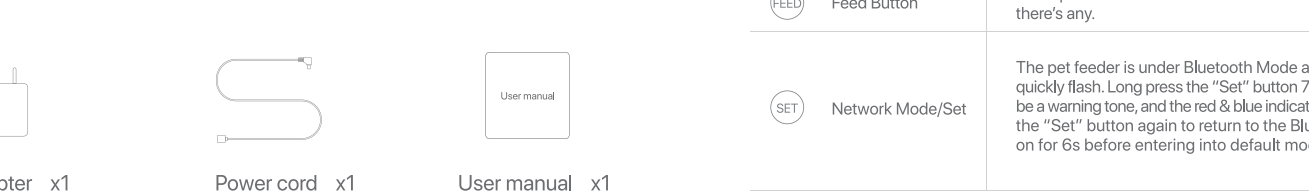
# User Manual

## I Product Overview



- 1 Cover
- 2 Food container **The food container is not detachable**
- 3 Button & Indicator lights
- 4 Food outlet
- 5 Food bowl

## I Packing List



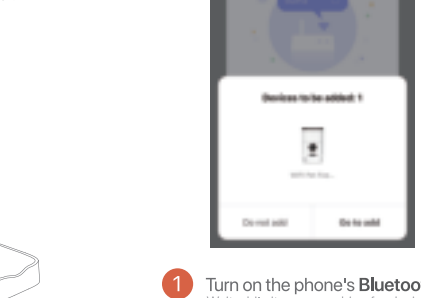
## I Indicator Lights/Operations

Indicator lights	Action	Status
Constant on		Battery mode
Flash		The food is clogged
Quick flash twice		Lock/Unlock
Stay on for 6s		Switch mode
Quick flash twice in 1s		Wifi mode(Bluetooth Mode)
Slow flash at 3s intervals		Wifi Hotspot Mode(AP mode)
Constant on		Wifi connected successfully
Constant on for 6s		Powered on or switch a mode
Flash for 10s		Battery mode

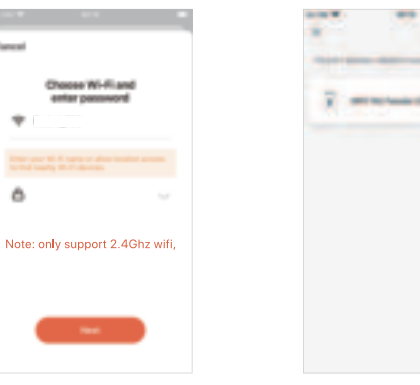
Button	Explanation
Record Button	Under working status, long press and hold the record button to start recording, release the button to stop. There will be warning tones(twice). The max. recording time is 10s, you can feel free to repeat the steps to cover the previous records.
Lock/Unlock Button	Long press the button to lock the pet feeder, the red indicator light will flash twice to remind you the lock status. At locked status, the feed button and record button will not work, the feeding plan will continue to work as scheduled. Long press it again to unlock, the red indicator light will also flash twice to indicate the unlocked status.
Feed Button	Short press the feed button to feed manually and it will also play the voice record for once if there's any.
Network Mode/Set	The pet feeder is under Bluetooth Mode at default when turned on, and the indicator light will quickly flash. Long press the "Set" button 7s to switch into Wifi Hotspot Mode(AP Mode), there'll be a warning tone, and the red & blue indicator light will stay on for 6s, then flash slowly. Long press the "Set" button again to return to the Bluetooth Mode, the red&blue indicator light will stay on for 6s before entering into default mode, and there will also be a warning tone.

## I Using Tips

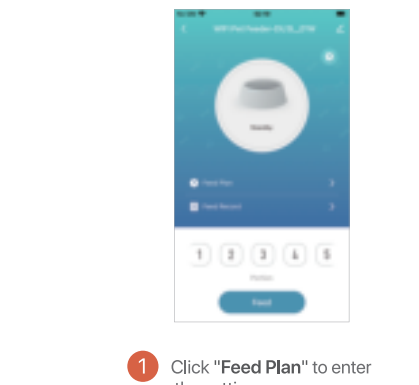
**How to open/close the cover**  
Simply press the 2 buckles inwards to release the buckle, then lift to remove the cover.



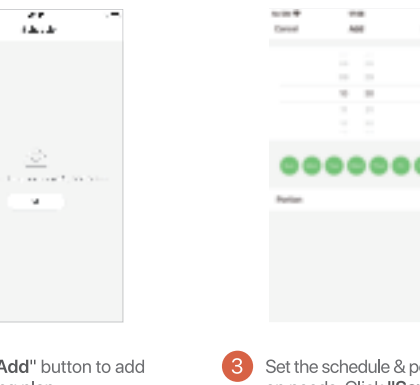
## I Add Device



## I Add Meal Plan



## I Share Device



## I Troubleshooting

Problems	Causes	Solutions
Can not connect to Wifi	1. The Wifi password is too long. 2. You have connected to a 5Ghz Wifi. 3. The Wifi password is too simple.	1. Please limit the Wifi password to 12 characters. 2. Please connect to a 2.4Ghz Wifi. 3. Please make sure the Wifi password contains both numbers and letters.
The feeder can't dispense food or the feed portion is not accurate	1. The food bowl is full. 2. The food dispenser outlet is blocked. 3. The battery is running out. 4. The battery is leaking.	1. Please wait till the food bowl is empty before feeding. 2. Please check if the food dispenser outlet is blocked, if yes, fix it before feeding. 3. Replace with new batteries. 4. Clean the battery box and replace with new batteries.
The pet feeder is offline	1. The pet feeder is too far from the Wifi router. 2. There are barriers between pet feeder and the Wifi router, like wall.	1. Please place the pet feeder near the Wifi router the maximum signal range is 32.8ft. 2. Please keep the pet feeder and the Wifi router in the same room, or it may block the Wifi signal and lose connection.
The pet feeder is not working when turned on	1. The pet feeder is not powered on. 2. Check if the adapter is defective.	1. Please check the power source is working and the power cord is connected properly. 2. Please try to use the battery as power source to check if the pet feeder will work normally. If not, please contact us for further support.

## I AP Mode

**AP Mode configuration(optional)**  
Please follow the instructions to connect the pet feeder with the Tuya APP at default mode. If it failed, please switch to AP Mode(Wifi Hotspot Mode) and follow the steps below to try again:  
1. When waiting for connection, the indicator light will quick flash. Long press the "Set" button for 7s to enter the Wifi Hotspot Mode(AP mode), the indicator will switch to slow flash after warning tone.  
2. Go to the Tuya smart app, choose "Add device"- "Add Manually"- "Small Appliances"- "Pet Feeder". Choose - "Wifi Hotspot Mode(AP mode)" through the menu on the top right corner. Then fill in the password of your Wifi and go to the Wifi menu on your phone, choose and connect to the Wifi named "Tuya-xxx".  
3. Return to the App and waiting for the connection to complete.

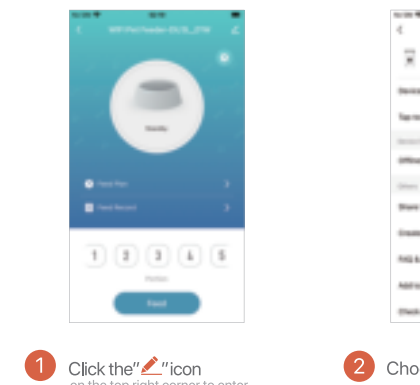
## I Product Specification

Specification	
Brand	dokoo
Model	DU3L-WS-01
Capacity	3L
Voltage	DC 5V
Power	5W
Support Wifi	2.4Ghz
Material	ABS
Package Size	7.8" x 7.8" x 12.2"
★ Fit for food size: 0.08"-0.47"(Max) about one-half of a 25-cent coin.	

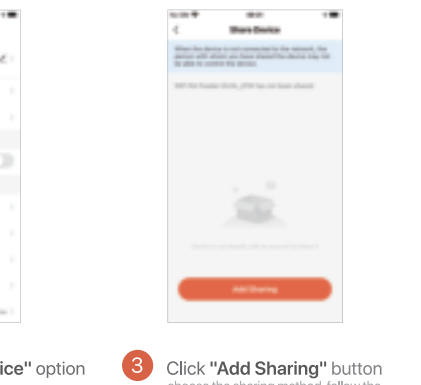
## I Important Tips

- (1) The pet feeder is only for indoor use.
- (2) It is recommended to place the pet feeder in the corner or close to the wall to avoid impact or bumps.
- (3) Please do not put the pet feeder under water.
- (4) Please take out the battery and unplug the power cord if the product is not in use for a long time.
- (5) This pet feeder is designed to serve dry food only.
- (6) Please do not put anything else other than pet food into the container.
- (7) Please keep the pet feeder away from fire, water and any corrosive chemical stuffs.
- (8) Please do not try to disassemble, DIY or fix the product by yourself.

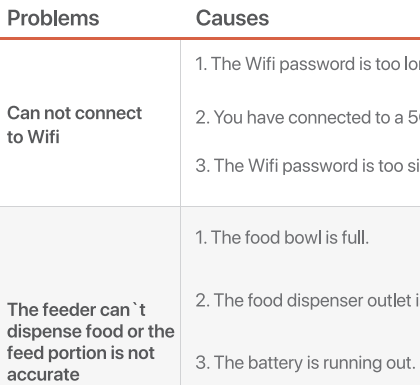
## I Feed Record



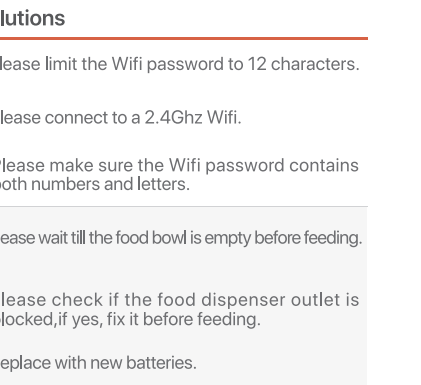
## I Factory Reset



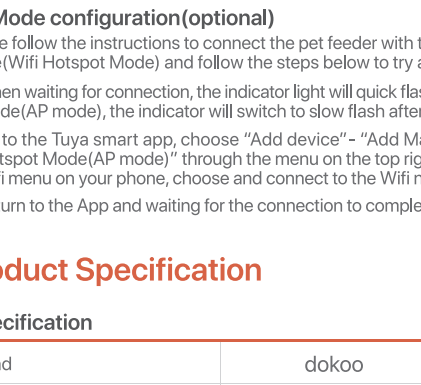
## I Getting Started



## I Add Meal Interface Explanation



## I Feed Record



## I Battery Using tips

1. Use 3 x D size alkaline battery.
2. Place the batteries referring to the positive anode and cathode mark inside the battery box.
3. When the battery is running out, please make sure to turn off the pet feeder before replacing the battery.
4. Please take out the batteries before replacing with new batteries.
5. Do not take out the battery when the pet feeder is powered on.
6. Please put the used batteries to a battery recycling bin according to the related national & local policies.
7. Please clean the battery box immediately if there's any leak occurred, and please put the batteries into a battery recycling bin.

## FCC warnings

- This device complies with part 15 of the FCC Rules. Operation is subject to the following two conditions:
1. This device may not cause harmful interference.
  2. This device must accept any interference received, including interference that may cause undesired operation.

## I Warranty Policy

**Thank you for your trust & support. We stand behind our products and provide a 12 month warranty for your order in accordance with Amazon's policies and the terms as below:**

1. For any quality based issues, we will provide a free replacement or full refund for your order, we may ask you to provide order details like your Order ID, proof of the issues to help us handle the issue.
2. For any return request, please kindly make sure the product package and item in 100% new condition and unused status or we may refuse to accept the return and your return request.

**For situations listed as below, we may not be able to provide the warranty service:**

1. The product is damaged due to improper uses.
2. The order has expired the warranty period. We may charge a service fee for extended warranty, the fee depends on the exact service.
3. The product has been disassembled, fixed or altered by yourself.

For any questions or issues with your order or the item received, please feel free to contact us on Amazon .

## Manufacturer's Name

**Manufacturer's Name:** Shenzhen Dudu Pet Supplies Ltd.  
**Company Address:** Room 2903, Building A, No. 2 Zhongliangxiangyuan, Ailian community, Longcheng street, Longgang, Shenzhen, China  
**After-sale Service:** support@dokootech.com  
Made in China

## Important Tips

- (1) The pet feeder is only for indoor use.
- (2) It is recommended to place the pet feeder in the corner or close to the wall to avoid impact or bumps.
- (3) Please do not put the pet feeder under water.
- (4) Please take out the battery and unplug the power cord if the product is not in use for a long time.
- (5) This pet feeder is designed to serve dry food only.
- (6) Please do not put anything else other than pet food into the container.
- (7) Please keep the pet feeder away from fire, water and any corrosive chemical stuffs.
- (8) Please do not try to disassemble, DIY or fix the product by yourself.