



TEMPERATURE AND HUMIDITY MONITOR

GB IE NI MT CY

TEMPERATURE AND HUMIDITY MONITOR

Operation and safety notes

OWIM GmbH & Co. KG

Stiftsbergstraße 1
74167 Neckarsulm
GERMANY

Model No.: HG08330
Version: 12/2021

IAN 376306_2104

GB IE NI MT CY

IAN 376306_2104












GB IE NI MT CY

TEMPERATURE AND HUMIDITY MONITOR

Warnings and symbols used	Page	4
Introduction	Page	4
Intended use.	Page	5
Scope of delivery.	Page	5
Technical data	Page	5
Trademark notices	Page	5
Safety instructions	Page	6
Safety instructions for batteries	Page	7
Parts description	Page	8
Before first use	Page	11
Insert/change the battery	Page	11
Mount the wall holder	Page	11
Display on/off	Page	11
Software installation	Page	12
System requirements.	Page	12
Install the software	Page	12
Launch the software	Page	15
Interface and basic functions	Page	17
Operation using software	Page	26
Program the product.	Page	26
Operation	Page	27
Main interface mode	Page	27
Humidity interface mode	Page	27
Start/stop logging	Page	27
Maximum temperature	Page	28
Minimum temperature	Page	28
Marked value.	Page	28
Temperature alarm	Page	29
Change temperature unit	Page	29
Maximum humidity	Page	30
Minimum humidity	Page	30
Humidity alarm	Page	30
Information	Page	31
Troubleshooting	Page	31
Cleaning and care	Page	32
Storage	Page	32
Disposal	Page	32
Warranty	Page	33
Warranty claim procedure	Page	33
Service	Page	33

Warnings and symbols used

The following warnings are used in the instruction manual and on the packaging:

	DANGER! This symbol in combination with the signal word "Danger" marks a high-risk hazard that if not prevented could result in death or serious injury.		NOTE: This symbol in combination with "Note" provides additional useful information.
			This symbol means that the operating instructions must be observed before using the product.
	WARNING! This symbol in combination with the signal word "Warning" marks a medium-risk hazard that if not prevented could result in death or serious injury.		Direct current/voltage
			Battery included
	CAUTION! This symbol in combination with the signal word "Caution" marks a low-risk hazard that if not prevented could result in minor or moderate injury.		This mandatory sign indicates to wear suitable protective gloves! Follow the instructions of this warning to avoid hand injuries caused by objects or contact with hot or chemical materials.
			Danger – risk of explosion!
	ATTENTION! This symbol with the signal word "Attention" indicates a possible property damage.		CE mark indicates conformity with relevant EU directives applicable for this product.

● Introduction

We congratulate you on the purchase of your new product. You have chosen a high quality product. The instructions for use are part of the product. They contain important information concerning safety, use and disposal.

Before using the product, please familiarise yourself with all of the safety information and instructions for use. Only use the product as described and for the specified applications. If you pass the product on to anyone else, please ensure that you also pass on all the documentation with it.

● Intended use

This product is suitable for measuring temperature and humidity accurately with large data storage capacity.

The measured temperature and humidity readings are saved by the product and can be analysed using software. The measurements can be started automatically or manually.

The product is only intended for use in private households, and not intended for commercial use. This product is only for indoor use.

● Scope of delivery

- 1x Temperature and Humidity Monitor
- 1x Battery (CR2032)
- 1x Wall holder
- 2x Screws
- 2x Wall plugs
- 1x Instruction manual

● Technical data

- Battery type: CR2032 (button cell)
- Operating voltage: 3 V 
- IP protection: IP20

	Temperature	Humidity
Range:	-30 to +70 °C	0 to 100 % RH
Accuracy:	±0.5 °C	±2.5 % RH
Resolution:	0.1 °C	0.1 % RH
Working temperature and humidity:	-30 to +70 °C	≤99.9 % non-condensable
Storage temperature:	-50 to +70 °C	-
Maximum data storage:	32,000 measured temperature data	32,000 measured humidity data

● Trademark notices

- Windows and Windows 7 / 8 / 10 / XP are registered trademarks of Microsoft Corporation in the USA and other countries.
- USB® is a registered trademark of USB Implementers Forum, Inc.
- Intel and the Intel logo are trademarks of Intel Corporation or its subsidiaries.
- Any other names and products may be trademarks or registered trademarks of their respective owners.



Safety instructions

Before using the product, please familiarise yourself with all the operating and safety instructions. Please include all documentation when passing this product on to others.

⚠ WARNING! RISK OF LOSS OF LIFE OR ACCIDENT TO INFANTS AND CHILDREN!

Never leave children unsupervised with the packaging material. The packaging material represents a danger of suffocation. Children frequently underestimate the dangers. Always keep children away from the packaging material.

- This product can be used by children aged from 8 years and above and persons with reduced physical, sensory or mental capabilities or lack of experience and knowledge if they have been given supervision or instruction concerning use of the product in a safe way and understand the hazards involved.

Children shall not play with the product. Cleaning and user maintenance shall not be made by children without supervision.

- Before use: Check the product for damage. If the product is damaged, do not use it.
- Do not expose the product to moisture. Otherwise the product could be damaged.

- Unauthorized conversion and/or modification of the product is not allowed for reasons of safety.
- The product must not be subjected to heavy mechanical stress. Handle the product carefully and do not drop it. Knocks, blows or even a fall from a low height can damage the product.
- Do not use the product in rooms or at unfavourable ambient conditions in which there may or could be combustible gases, vapours or dust.
- Avoid an operation near strong magnetic/ electromagnetic fields, transmitting aeriels or HF generators, since this could affect the measurement.
- Do not switch on the product immediately after it has been taken from a cold into a warm environment. The condensation that forms might destroy your product. Allow the product to reach ambient temperature before switching on the product.
- The product must not be exposed to extreme temperatures, direct sunlight, intense vibration or strong mechanical stress and dampness.
- Do not open or dismantle the housing.
- Do not touch or block the sensor holes **6**.



Safety instructions for batteries

- ⚠ DANGER TO LIFE!** Keep batteries out of reach of children.
If accidentally swallowed seek immediate medical attention.



DANGER OF EXPLOSION! Never recharge non-rechargeable batteries. Do not short-circuit batteries and / or open them. Overheating, fire or bursting can be the result.

- Never throw batteries into fire or water.
- Do not exert mechanical loads to batteries.

Risk of leakage of batteries

- Avoid extreme environmental conditions and temperatures, which could affect batteries, e.g. radiators / direct sunlight.
- If batteries have leaked, avoid contact with skin, eyes and mucous membranes with the chemicals!
Rinse immediately the affected areas with fresh water and seek medical attention!



WEAR PROTECTIVE GLOVES!

Leaked or damaged batteries can cause burns on contact with the skin. Wear suitable protective gloves at all times if such an event occurs.

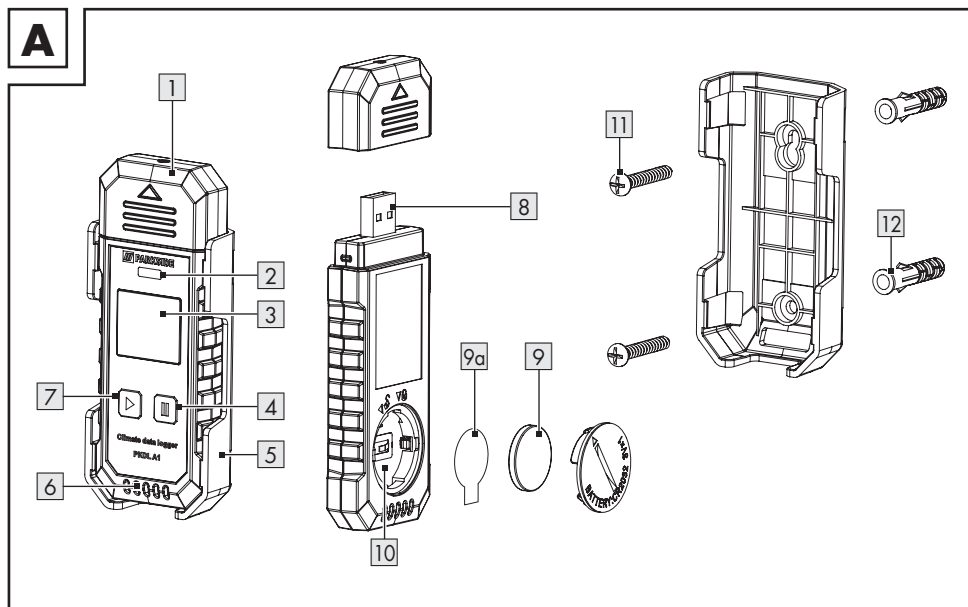
- Remove batteries if the product will not be used for a longer period.

Risk of damage of the product

- Only use the specified type of battery!
- Insert batteries according to polarity marks (+) and (–) on the battery and the product.
- Clean the contacts on the battery and in the battery compartment before inserting!
- Remove exhausted batteries from the product immediately.

● Parts description

Product:



1 USB cap

2 LED indicator

3 Display

4 (stop button)

5 Wall holder

6 Sensor holes

7 (start button)

8 USB A plug

9 Battery cover

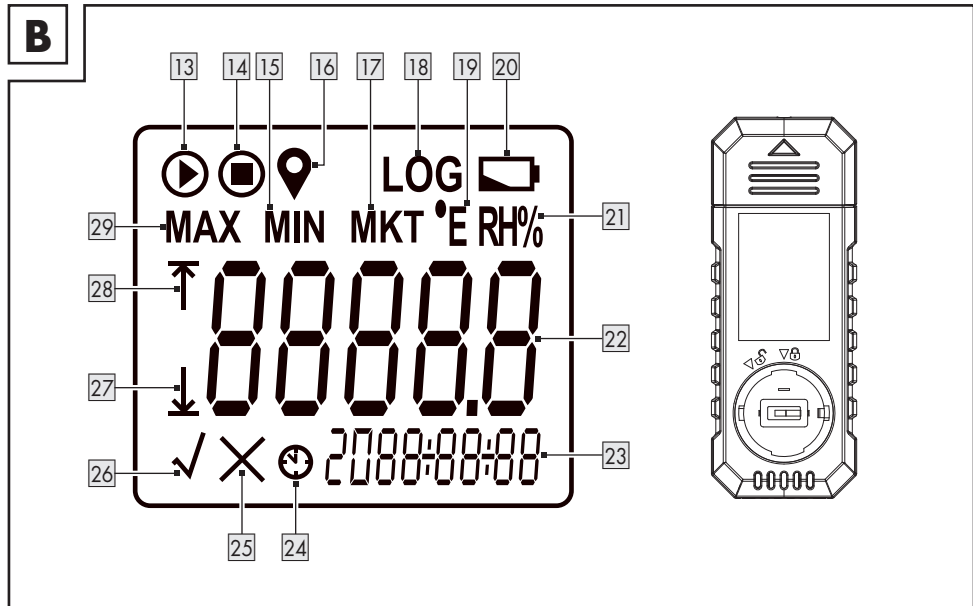
9a Battery protective sheet

10 Battery compartment

11 Screw

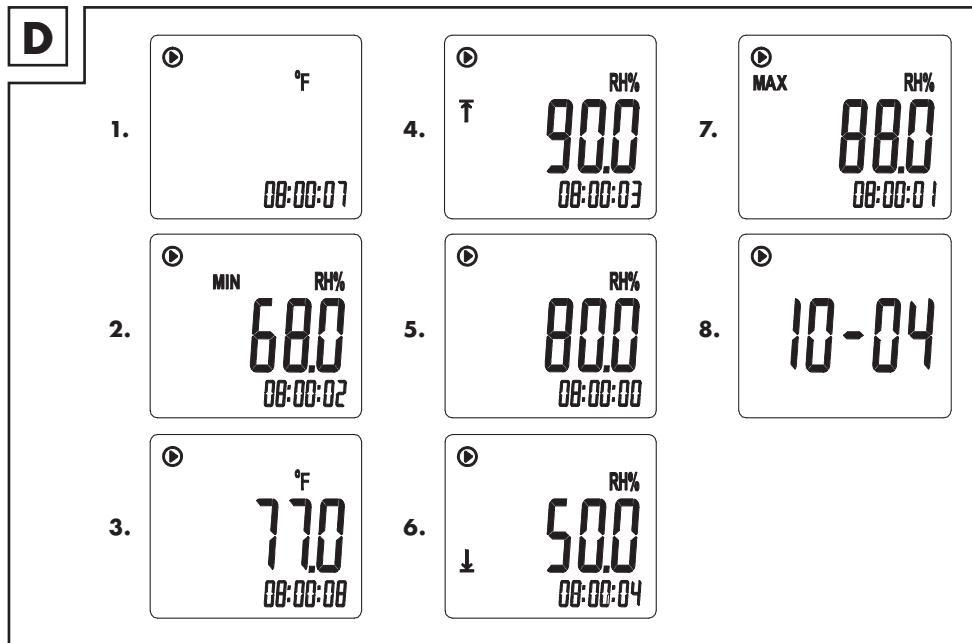
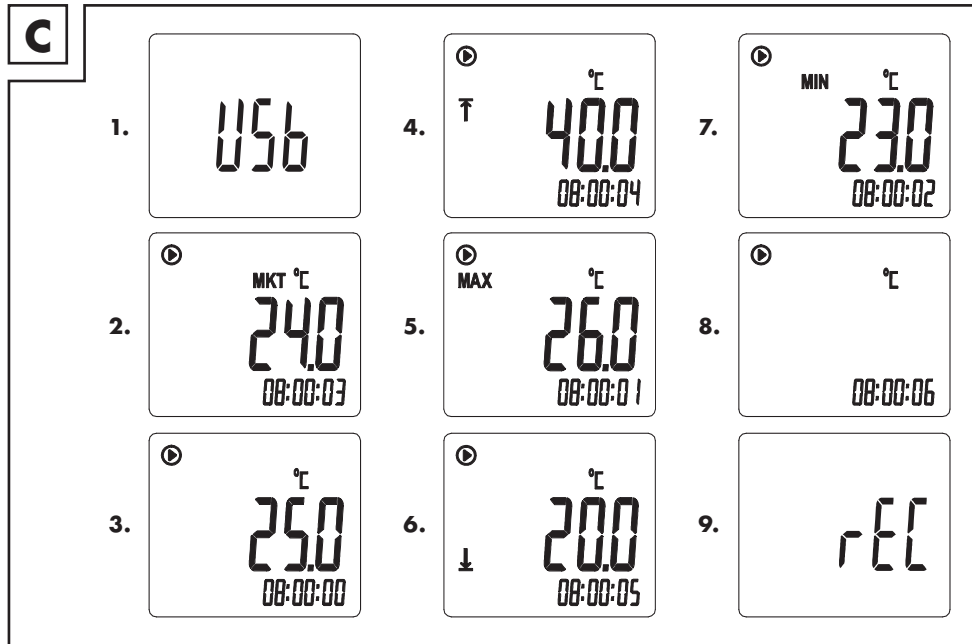
12 Wall plug

Display:



- | | | | | | |
|----|------------|----------------------------|----|------------|------------------------------|
| 13 | | (start) | 22 | | Temperature/humidity reading |
| 14 | | (stop) | 23 | | Time display area |
| 15 | MIN | (minimum value) | 24 | | (fixed/time delay symbol) |
| 16 | | (marking) | 25 | | (abnormal logging alarm) |
| 17 | MKT | (mean kinetic temperature) | 26 | | (no alarm) |
| 18 | LOG | (number of sets) | 27 | | (low alarm setting) |
| 19 | °E | (temperature unit) | 28 | | (high alarm setting) |
| 20 | | (low battery) | 29 | MAX | (maximum value) |
| 21 | RH% | (humidity unit) | | | |

Display overview:




● **Before first use**

● **Insert/change the battery**

⚠ ATTENTION! Risk of data loss! All recorded data is lost when replacing the battery. If necessary, save all recorded data on your computer before replacing the battery.



① **NOTES:**

- First time use: The battery inside the battery compartment **10** is new. Remove the battery protective sheet **9a** from the battery compartment **10**.
- Do not press any button while changing the battery.
- When the battery charge status is low,  **20** is shown in the display **3**. A low battery leads to false or inaccurate measuring results.
- Use a coin to rotate the battery compartment cover **9** in an anti-clockwise direction until a click sound is heard. Remove the battery compartment cover.
- If required, remove the old battery by lifting it out with a small screwdriver.
- Insert the new battery under the metal contacts on the edge, with the + polarity facing outwards. Push the battery into the battery compartment **10**.
- Reattach the battery compartment cover **9**. Use a coin to rotate the battery compartment cover in a clockwise direction.

● **Mount the wall holder**

- Mount the wall holder **5** on a wall using the screws **11** and wall plugs **12**.

● **Display on/off**

- Remove the protective film from the display **3**.
- Switching on: Briefly press  **7** or  **4** to switch on the display **3**.
- The display **3** switches off automatically after approx. 10 seconds if no button is pressed during this time.

● **Software installation**

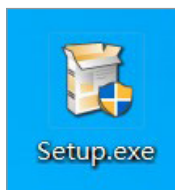
● **System requirements**

To install the **///PARKSIDE Temperature and Humidity Monitor** software, the computer should meet the following minimum requirements:

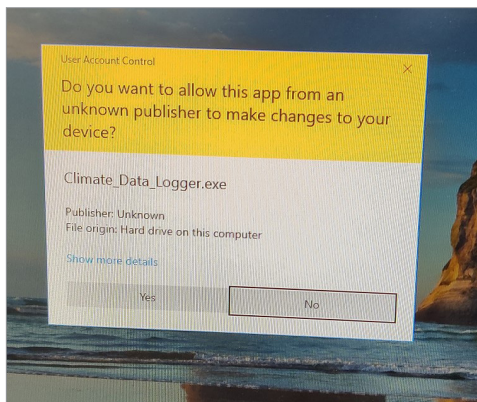
- Pentium 1 GHz processor or faster
- RAM memory: Min. 1 GB
- Storage capacity on hard disk drive: Min. 2 GB
- USB 2.0/3.0
- Operating system: Microsoft Windows 7 / 10

① **NOTE:** Perform a Windows update first, if your computer does not contain the corresponding Windows version.

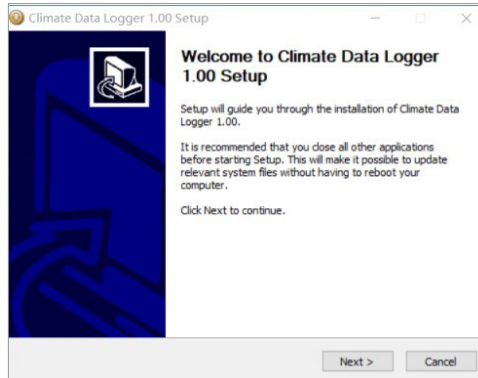
● **Install the software**



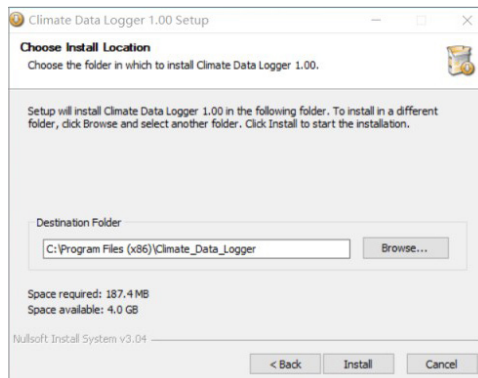
1. Download the software from website <https://www.lidl-service.com> and get the file **Setup.exe**.



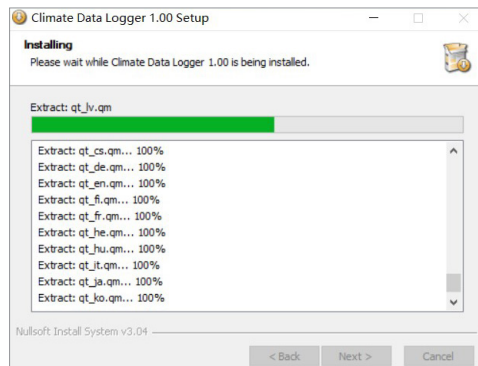
2. Double-click **Setup.exe** to start the installation. One or more pop-up warning windows are shown.
3. Click **Yes** on all pop-up warning windows to continue.



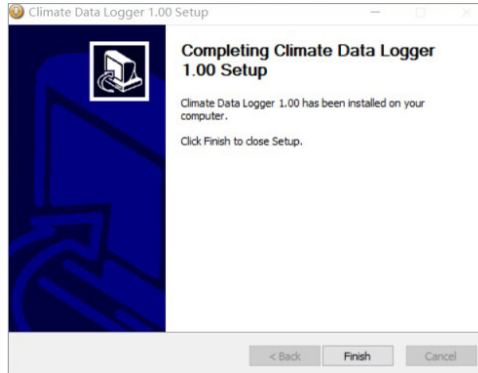
4. Click **Next** to continue.



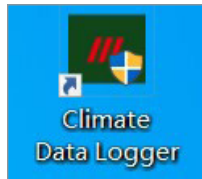
5. Select install location. Click **Install** to start the installation.



6. The software is being installed.

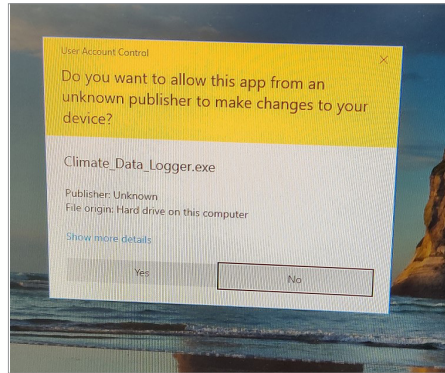


7. Click **Finish** to complete the installation.

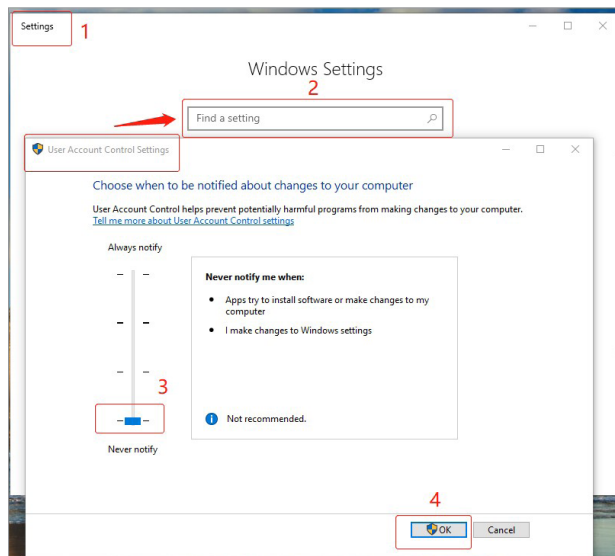


8. The **Temperature and Humidity Monitor** icon is shown on the desktop.

● Launch the software



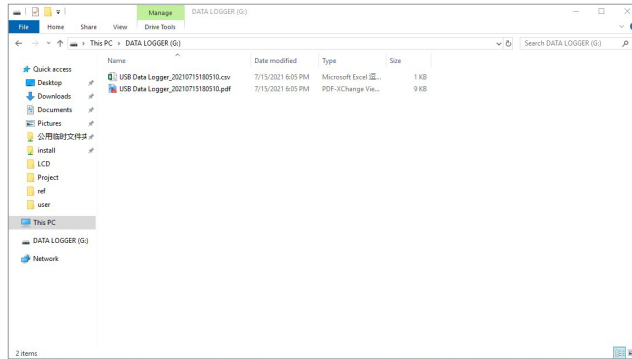
1. Double-click the **Temperature and Humidity Monitor** icon. One or more pop-up windows are shown.
2. Click **Yes** on all pop-up warning windows to continue.



3. Switch off the notifications: Go to **Windows Settings**. Search **User Account Control Settings**. Select **Never Notice**. Confirm by clicking **OK**.

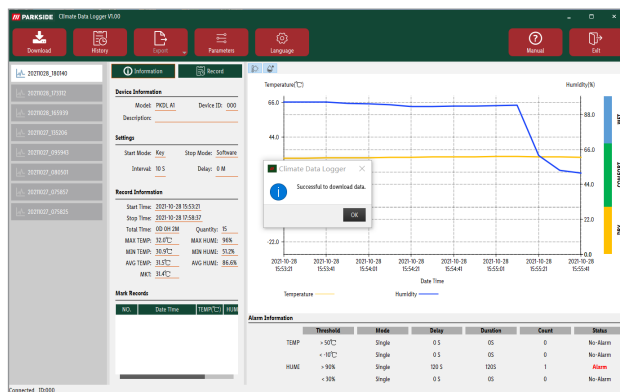


4. The following icons are shown on the software interface: Download, History, Export, Parameters, Options, Manual, Exit.

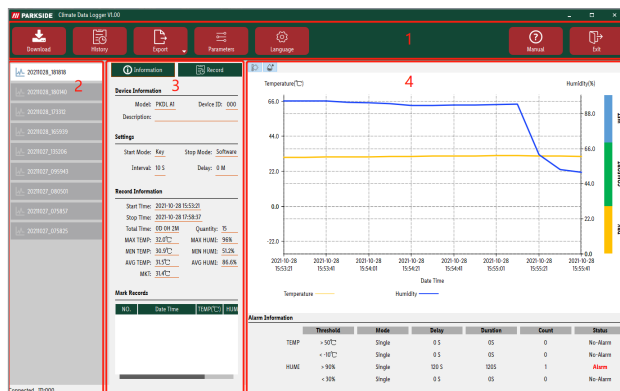


5. Insert the product into the USB port of the computer. **Usb** is shown on the display [3]. The LED indicator [2] flashes until data is generated. The logger drive folder opens automatically. Users can click the pdf or csv file to check the data.

● Interface and basic functions



- After the data is generated, click the **Download** icon and then click **OK** to see the full software interface.



1. Toolbar
2. Data list
3. Information and records
4. Graph and alarm information

Toolbar



- Click **Download** to download the data.



- Click **History** to display historical data.



- Click **Export** to export data as pdf and xls reports.



- Click **Parameters** to open the dialogue.



- Click **Manual** to open the software manual.



- Click **Exit** to close the software.



- Click **Language** to select your language.

Parameters

Device

Model PKDL A1

ID 0

Description

Unit

Time

UTC UTC+8

PC 2021/10/28 18:04:13

Device 2021/10/28 18:03:41

☒ Update

Alarm

	Mode	Threshold	Delay
High Temperature	Single	50.0	0 S
Low Temperature	Single	-10.0	0 S
High Humidity	Single	90.0%	0 S
Low Humidity	Single	30.0%	0 S
Temperature Adjusting		0.0	Humidity Adjusting 0.0

Sampling

Interval 10 S

Delay 0 M

Start with Key

2021/10/28 18:13:42

☒ Stop with Key

Write

Read



Close

Parameter	Details	
1. Device	Model:	PKDL A1
	Unit (temperature unit):	°C or °F
	ID:	User can set the ID (Range: 0 to 255)
	Description:	Add a description with numbers or letters.
2. Time	<ul style="list-style-type: none"> ■ Set the product's time. 	
	<p>❶ NOTE: Choose your country's "UTC" before setting the time.</p> <ul style="list-style-type: none"> ■ If the update option is checked, the time on the computer is set on the product. 	
3. Alarm	Alarm enabled:	If the alarm is triggered, LED indicator 2 flashes in red every 10 s. × 25 is shown on the display 3 to indicate abnormal logging alarm.
	Mode:	Alarm type, single or accumulate setting menu
	Threshold:	High/low alarm limit setting menu
	Delay:	Alarm delay time setting menu (0 s to 10 h)
	❶ NOTE: Time can only be set in multiples of 10 s.	
	If delay time is 0 s at single mode:	The LED indicator 2 flashes in red immediately when the measured data exceeds the threshold set limit.
	If delay time is >0 s at single mode:	The LED indicator 2 flashes in red when delay time is reached.
	❶ NOTE: The product does not alarm if the reading resumes normal within delay time.	
	Accumulated mode:	If accumulated alarm time ≥ delay time, alarm is enabled.
	Adjust temperature/Adjust humidity:	This is an adjustment for the entire logged data. Entire logged value is adjusted according to this value.

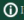

Parameter	Details
4. Sampling	<ul style="list-style-type: none"> ■ MAX/MIN/AVG/MKT/ALARM are calculated for the entire logged record. <p>Interval: Recording interval setting time (10 s to 24 h) NOTE: Time can only be set in multiples of 5 s.</p> <p>Delay: Start logging after the delay time (0 min to 240 min)</p> <p>Start with: Start logging option.</p> <p>Key: Long press the button to start logging.</p> <p>Software: Start logging through software. The product will start logging after the user unplugs the product from the computer.</p> <p>Appointment: Start logging at preset fixed time.</p> <p>Stop with key: Press and hold the button to stop logging.</p>
5. Write	<ul style="list-style-type: none"> ■ Write all parameters' settings into the product. This setting applies to user's next time record and does not change the history record data.
Read	<ul style="list-style-type: none"> ■ Read current product's parameters.
Close	<ul style="list-style-type: none"> ■ Close parameters setting.

Data list

This area displays all data download records named by date and time. Double-click the record bar to switch.

 20210707_172304
 20210707_095453

Information and records

- Click  to show device information/setting/record information/mark record.
 - Click  to show the temperature and humidity records of every interval time.
- If the alarm is enabled, ▲ is shown.

Information

Record

Device Information

Model: IAN 376306

Device ID: 001

Description:

SN: C210059272

Settings

Start Mode: Key

Stop Mode: Key

Interval: 10 S

Delay: 0 M

Record Information

Start Time: 2021-07-06 14:27:37

Stop Time: 2021-07-07 17:18:57

Total Time: 1D 2H 51M 20S

Quantity: 9669

MAX TEMP: 28.1℃

MAX HUMI: 79.3%

MIN TEMP: 25.5℃

MIN HUMI: 66.6%

AVG TEMP: 26.8℃

AVG HUMI: 73.6%

MKT: 26.8℃

Mark Records

NO.

Date Time

TEMP(℃)

HUMI(%)

Information		Record	
NO.	Date Time	TEMP(℃)	HUMI(%)
1	2021-07-06 14:27:37	▲ 26.2	71.7
2	2021-07-06 14:27:47	▲ 26.3	72.4
3	2021-07-06 14:27:57	▲ 26.3	70.5
4	2021-07-06 14:28:07	▲ 26.4	69.7
5	2021-07-06 14:28:17	▲ 26.5	69.4
6	2021-07-06 14:28:27	▲ 26.5	69.3
7	2021-07-06 14:28:37	▲ 26.5	68.6
8	2021-07-06 14:28:47	▲ 26.5	66.7
9	2021-07-06 14:28:57	▲ 26.6	66.8
10	2021-07-06 14:29:07	▲ 26.6	67.2
11	2021-07-06 14:29:17	▲ 26.6	67.6
12	2021-07-06 14:29:27	▲ 26.6	68.1
13	2021-07-06 14:29:37	▲ 26.6	68.1
14	2021-07-06 14:29:47	▲ 26.6	68.3
15	2021-07-06 14:29:57	▲ 26.5	68.4
16	2021-07-06 14:30:07	▲ 26.6	68.5
17	2021-07-06 14:30:17	▲ 26.5	68.6
18	2021-07-06 14:30:27	▲ 26.6	68.6
19	2021-07-06 14:30:37	▲ 26.5	68.5
20	2021-07-06 14:30:47	▲ 26.6	68.5

Device Information

- Set in toolbar **parameters** - **device**

Settings

- Set in toolbar **parameters** - **sampling**

Record information



- Basic information of this record

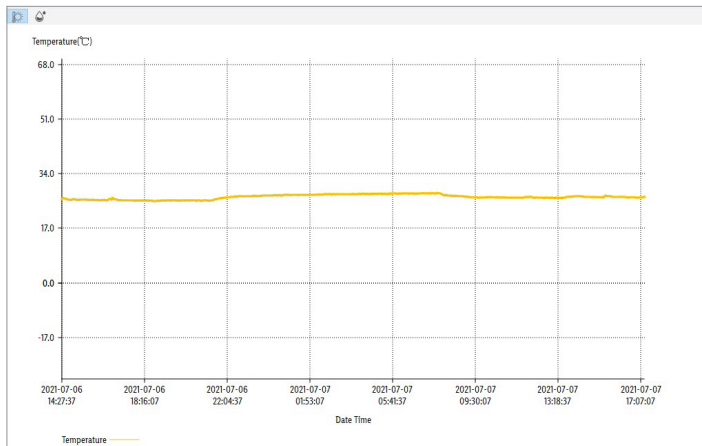
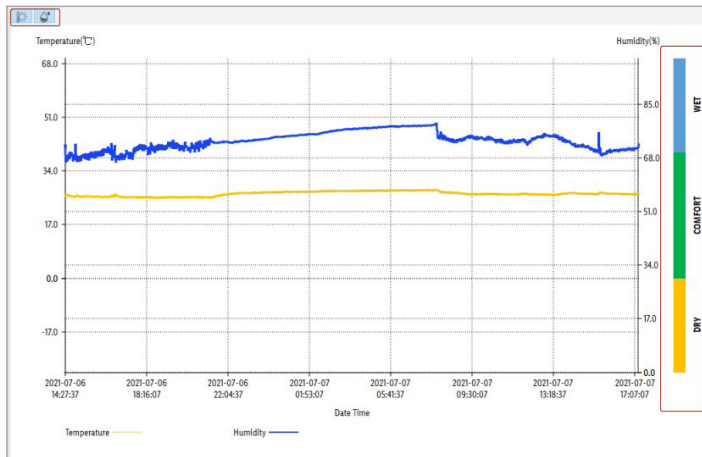
Mark records

- The marking information of this record

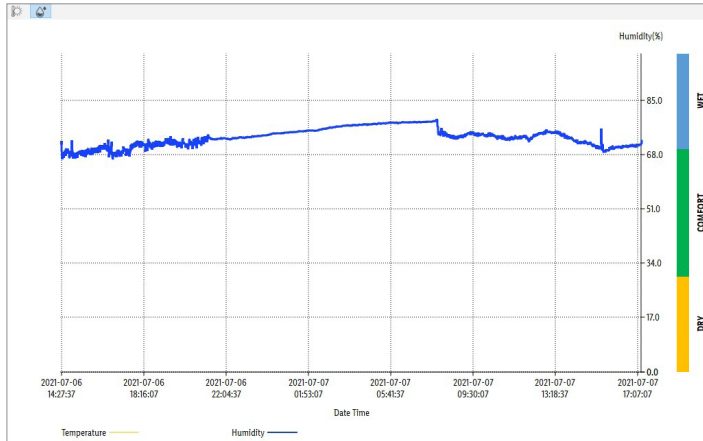
Graph and alarm information

Graph:

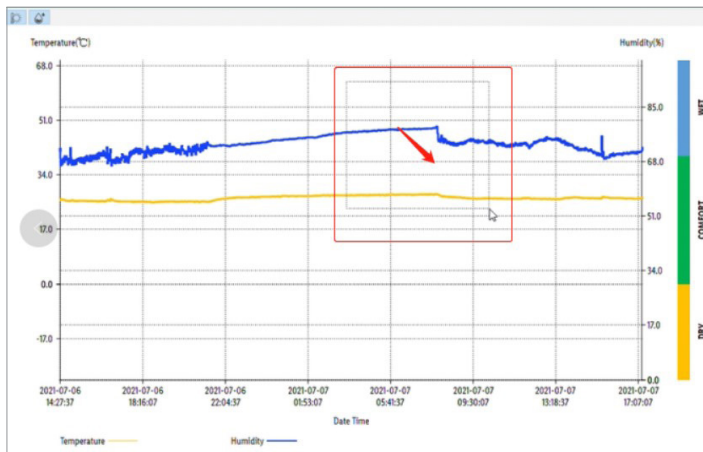
- The graph area shows the temperature and humidity graph of the entire record.
- Move the cursor to the graph, to display the corresponding temperature and humidity value at a certain point in time.
- Show or hide the graph by clicking   in the upper left corner.
- The humidity bar gives a more intuitive understanding of the current humidity range.
 - **DRY** (orange): Humidity less than 30 %
 - **COMFORT** (green): Humidity ranges from 30 to 69 %
 - **WET** (blue): Humidity over 70 %



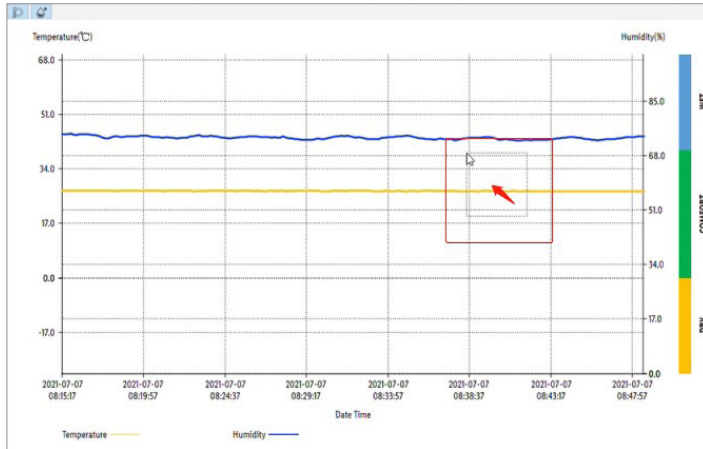
The temperature graph is displayed in yellow colour.



The humidity graph is displayed in blue colour.



Use the cursor to select a part of the graph. The selected part will be enlarged and displayed.



Reverse selection at any point on the graph will restore the entire graph.

Alarm:

- **Alarm information:** This area shows the alarm information of this record.
- **Threshold/mode/delay:** Set in **Parameters - Alarm**.
- **Duration:** Duration alarm
- **Count:** Number of alarms. If there is a continuous alarm without any interruption, the count of alarms is one.
- **Status:** Alarm or no alarm

Alarm Information						
	Threshold	Mode	Delay	Duration	Count	Status
TEMP	> 40℃	Accumulate	0 S	0S	0	No-Alarm
	< -10℃	Accumulate	0 S	0S	0	No-Alarm
HUMI	> 80%	Accumulate	0 S	0S	0	No-Alarm
	< 30%	Accumulate	0 S	0S	0	No-Alarm

● Operation using software

- Double-click the **/// PARKSIDE Temperature and Humidity Monitor** icon on your computer desktop to open the software.
- One or more pop-up warning windows is shown when opening the software. Click **Yes** on all pop-up warning windows until the software is opened.
- Pull off the USB cap **1** from the product.
- Insert the USB A plug **8** of the product into the USB port of your computer.
- **USB** is shown on the display **3** and the LED indicator **2** flashes faster several times until data is generated.

⚠ **ATTENTION! Risk of product damage!**

To prevent malfunction of the product/loss of logged data, do not remove the product from the USB port until LED **2** stops flashing.

- The software does not recognize the product until the LED indicator **2** stops flashing. During this time, the software shows "Disconnected" on the bottom left corner. Once the LED indicator **2** stops flashing, the software shows "connected ID:XXX" on the bottom left corner.
- The logger drive folder opens automatically. Open the pdf or csv file to check the data.
- Review software user manual: Open the **/// PARKSIDE Temperature and Humidity Monitor** software and select **manual**. The software user manual offers additional support and exact descriptions of each software function.

● Program the product

⚠ **ATTENTION! Risk of product damage!**

Once the product is reprogrammed, all previously logged values are deleted from the product. If required, save the logged values on your computer prior to reprogramming the product.

- Set up the parameters: Open the **/// PARKSIDE Temperature and Humidity Monitor** software. Click **parameters** to open the parameter interface window.

- ① **NOTE:** Review software user manual: Open the **/// PARKSIDE Temperature and Humidity Monitor** software and select **manual**. The software user manual offers exact descriptions of each software function and usage.

● Operation

● Main interface mode

- Switch on the display [3]: Briefly press [▶] [7] or [■] [4].
- The main interface mode (Fig. C3) is shown.



Fig. C3

- Currently measured temperature [22] and current time [23] are shown on the main interface mode.

● Humidity interface mode



Fig. C3



Fig. D5

- While the display [3] is at main interface mode (Fig. C3), briefly press [■] [4] to switch to humidity interface mode (Fig. D5).
- Currently measured humidity [22] and current time [23] are shown on humidity interface mode (Fig. D5).
- Press [■] [4] again to switch back to main interface mode (Fig. C3).

① **NOTE:** At any interface/display mode: Briefly press [■] [4] 1x to exit and to go back to main interface mode.

● Start/stop logging

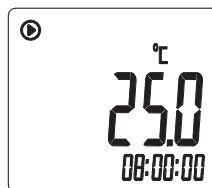


Fig. C3

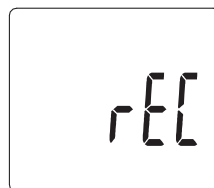


Fig. C9

- While the display [3] is at main interface mode (Fig. C3), press and hold [▶] [7] until rE{ is shown (Fig. C9).
- [▶] [13] is shown to indicate that the logging has started. LED indicator [2] flashes every 10 s.
- While the display [3] is at main interface mode (Fig. C3), press and hold [■] [4] until [■] [14] is shown.
- [■] [14] is shown to indicate that the logging has stopped. LED indicator [2] stops flashing.

① NOTES:

- Refer to software user manual for more details about start/stop logging.
- While logging (measuring temperature/humidity), never block the sensor holes [6] as it affects the measurement accuracy.
- For better accuracy, do not keep the product in your hands while logging. Put the product back onto the wall holder [5].

● Maximum temperature



Fig. C3

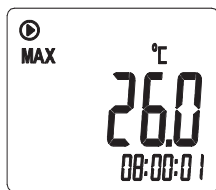


Fig. C5

- While the display [3] is at main interface mode (Fig. C3), briefly press \leftarrow [7] 1x to go to maximum temperature mode (Fig. C5).
- **MAX** [29] and maximum temperature measured for the entire logged period are shown.

● Minimum temperature



Fig. C3



Fig. C7

- While the display [3] is at main interface mode (Fig. C3), briefly press \leftarrow [7] 2x to go to minimum temperature mode (Fig. C7).
- **MIN** [15] and minimum temperature for the entire logged period are shown.

● Marked value

- ① **NOTE:** Marked value function is used for marking measured values for future reference.



Fig. C3

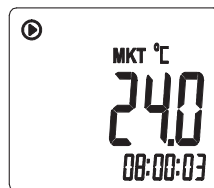


Fig. C2



Fig. D8

- While the display [3] is at main interface mode (Fig. C3), press and hold \leftarrow [7] to mark a particular measured data.
- Marked value flashes 3x simultaneously with 📍 [16] and shows the directive number (Fig. D8) at the end of the flash.

① NOTES:

- Max. 10 values can be marked in each logging measurement.
- All marked values are downloaded to software while downloading all other data.
- All downloaded marked values are shown in **information**.
- All marked values are also shown in the exported pdf file.

● Temperature alarm



Fig. C3



Fig. C4



Fig. C6

- While the display [3] is at main interface mode (Fig. C3), briefly press \triangleright [7] 4x to see high temperature alarm set value. \uparrow [28] is shown (Fig. C4).
- While the display [3] is at main interface mode (Fig. C3), briefly press \triangleright [7] 5x to see low temperature alarm set value. \downarrow [27] is shown (Fig. C6).
- If measured temperature exceeded high or low alarm set range, \times [25] is shown and LED indicator [2] flashes every 10 s in red colour.
- If measured temperature is within high or low alarm set range, \checkmark [26] is shown and LED indicator [2] flashes every 10 s in green colour.

NOTE: For more details about alarm settings and functions, refer to software user manual.

● Change temperature unit



Fig. C3

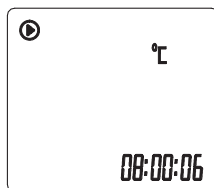


Fig. C8

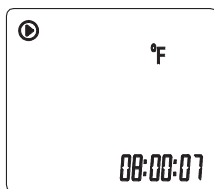


Fig. D1



Fig. D3

- While the display [3] is at main interface mode (Fig. C3), briefly press \triangleright [7] 7x to select unit °C/°F [19] (Fig. C8).
- Press and hold \triangleright [7] and \blacksquare [4] button simultaneously for 3 s. The newly changed temperature unit appears on the display [3]. The display [3] switches back to the main interface mode (Fig. C3).

● Maximum humidity

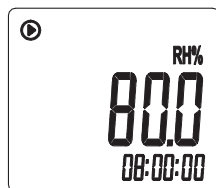


Fig. D5

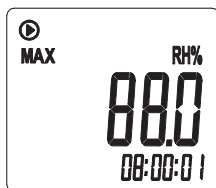


Fig. D7

- While the display [3] is at humidity interface mode (Fig. D5), briefly press [▶] [7] 1x to go to maximum humidity mode (Fig. D7).
- **MAX** [29] and maximum humidity measured for the entire logged period are shown.

● Minimum humidity



Fig. D5



Fig. D2

- While the display [3] is at humidity interface mode (Fig. D5), briefly press [▶] [7] 2x to go to minimum humidity mode (Fig. D2).
- **MIN** [15] and minimum measured humidity for the entire logged period are shown.

● Humidity alarm



Fig. D5

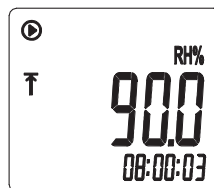


Fig. D4

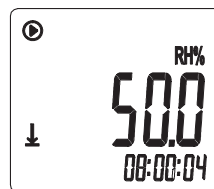


Fig. D6

- While the display [3] is at humidity interface mode (Fig. D5), briefly press [▶] [7] 3x. ↑ [28] is shown (Fig. D4).
- While the display [3] is at humidity interface mode (Fig. D5), briefly press [▶] [7] 4x. ↓ [27] is shown (Fig. D6).
- If measured humidity exceeds high or low alarm set range, ✕ [25] is shown and LED indicator [2] flashes every 10 s in red colour.
- If measured humidity is within high or low alarm set range, the display [3] shows ✓ [26] and LED indicator [2] flashes every 10 s in green colour.

① **NOTE:** For more details about alarm settings and functions, refer to software user manual.

● Information



Fig. C3

- While the display [3] is at main interface mode (Fig. C3), press [▶] [7] and [⏏] [4] simultaneously for 3 seconds to enter information interface.
- Briefly press [▶] [7] to view date.
- Press [▶] [7] again to view product ID.
- Press [▶] [7] again to view remaining storage groups.
- Press [▶] [7] again to view number marking record.
- Briefly press [⏏] [4] to go back to main interface mode (Fig. C3).

● Troubleshooting


Error	Possible causes/solutions
The measurement is too high or low.	Check whether the sensor holes [6] are blocked by your hand or any other object. If this is the case, remove the block from the sensor holes [6] and put the product back into the wall holder [5].
The display [3] is not reacting.	Briefly press [⏏] [4] to enter main interface mode. If required, remove and reinsert the battery to reset the product.
The display [3] indicator is weak.	The battery is low. Replace the battery (see "Insert/change the battery").

- ❗ **NOTE:** Electrostatic discharges can lead to malfunctions. In the event of such malfunctions, remove and reinsert the battery.

● Cleaning and care

- Do not allow liquids to enter the product. Otherwise the product may be damaged.
- Only clean the product with a slightly damp cloth.
- Before every use: Check the product for visible external damage.

● Storage

- Always attach the USB cap  to the product when not in use.
- Always remove the battery if the product is not used for extended periods.
- Store the product at a dry location out of the reach of children.

● Disposal

The packaging is made entirely of recyclable materials, which you may dispose of at local recycling facilities.



Observe the marking of the packaging materials for waste separation, which are marked with abbreviations (a) and numbers (b) with following meaning: 1-7: plastics / 20-22: paper and fibreboard / 80-98: composite materials.



The product and packaging materials are recyclable, dispose of it separately for better waste treatment.

The Triman logo is valid in France only.



Contact your local refuse disposal authority for more details of how to dispose of your worn-out product.



To help protect the environment, please dispose of the product properly when it has reached the end of its useful life and not in the household waste. Information on collection points and their opening hours can be obtained from your local authority.

Faulty or used batteries must be recycled in accordance with Directive 2006/66/EC and its amendments. Please return the batteries and / or the product to the available collection points.



Environmental damage through incorrect disposal of the batteries!

Batteries may not be disposed of with the usual domestic waste. They may contain toxic heavy metals and are subject to hazardous waste treatment rules and regulations. The chemical symbols for heavy metals are as follows: Cd = cadmium, Hg = mercury, Pb = lead. That is why you should dispose of used batteries at a local collection point.

● **Warranty**

The product has been manufactured to strict quality guidelines and meticulously examined before delivery. In the event of product defects you have legal rights against the retailer of this product. Your legal rights are not limited in any way by our warranty detailed below.

The warranty for this product is 3 years from the date of purchase. The warranty period begins on the date of purchase. Please keep the original sales receipt in a safe location. This document is required as your proof of purchase.

Should this product show any fault in materials or manufacture within 3 years from the date of purchase, we will repair or replace it – at our choice – free of charge to you. This warranty becomes void if the product has been damaged, or used or maintained improperly.

The warranty applies to defects in material or manufacture. This warranty does not cover product parts subject to normal wear, thus possibly considered consumables (e.g. batteries) or for damage to fragile parts, e.g. switches, rechargeable batteries or glass parts.

● **Warranty claim procedure**

To ensure quick processing of your case, please observe the following instructions:

Please have the till receipt and the item number (IAN 376306_2104) available as proof of purchase.

You will find the item number on the rating plate, an engraving, on the front page of the instructions for use (bottom left), or as a sticker on the rear or bottom of the product.

If functional or other defects occur, please contact the service department listed either by telephone or by e-mail.

You can return a defective product to us free of charge to the service address that will be provided to you. Ensure that you enclose the proof of purchase (till receipt) and information about what the defect is and when it occurred.

● **Service**

GB Service Great Britain

Tel.: 08000569216

E-Mail: owim@lidl.co.uk

IE Service Ireland

Tel.: 1800 200736

NI Service Northern Ireland

Tel.: 0800 0927852

E-Mail: owim@lidl.ie

MT Service Malta

Tel.: 80062960

E-Mail: owim@lidl.com.mt

CY Service Cyprus

Tel.: 8009 4211

E-Mail: owim@lidl.com.cy

