

Dear Pet Lover,



## Thank you for choosing GuineaLoft™ Cage Lid!

We design original, customizable habitats with love because we believe all pets are created equal. Your support keeps us innovating. Thank you for being part of our mission!

The GuineaLoft™ Team

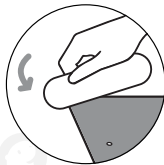


Need Help? Missing or Broken Parts? Email us first: [GUINEALOFT@GMAIL.COM](mailto:GUINEALOFT@GMAIL.COM)



Scan the QR Code to find How to Install video and get more inspirations.

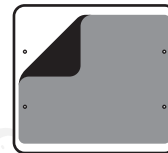
### REMEMBER TO PEEL



Use a scraper.

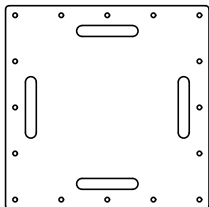


Scratch up an edge.

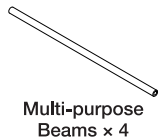


Peel off the unclear protection film.

### PACKING LIST



Lid Panels x8



Multi-purpose  
Beams x 4



M6 16mm Beam  
Joint Screws x 2



H2 Hinges x 4



M6 12mm Screws x 4



H4 Hinges x 2



Gaskets x 4



F2 Brackets x 4



L3 Brackets x 4



Thumb Screws x 4



L4 Brackets x 8

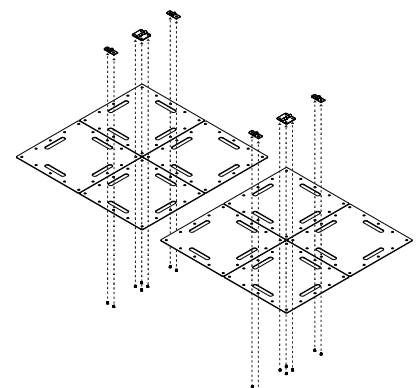
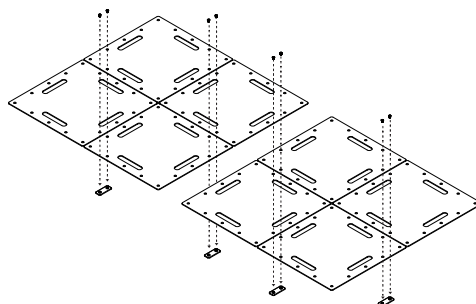


M5 6mm Screws x 60

### HOW TO INSTALL (1/2)

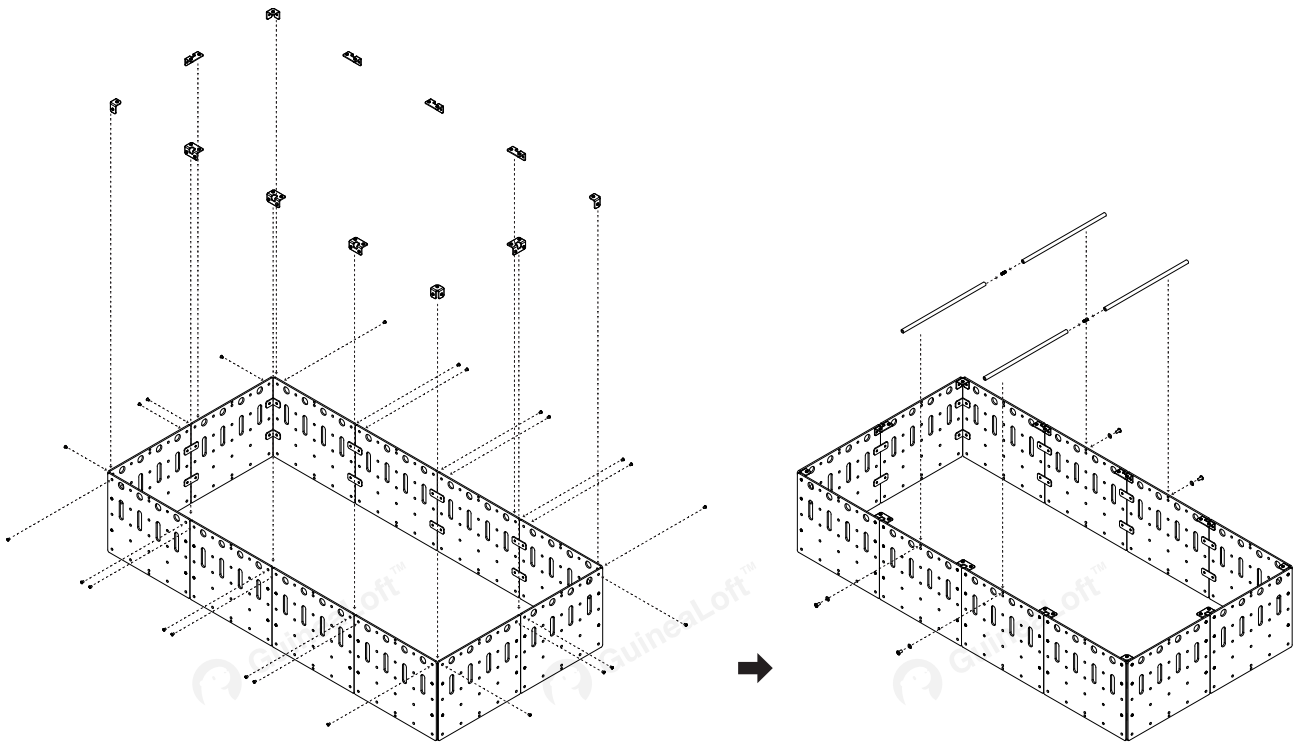
#### 1 Prepare Lid Panels

- Join 2 lid panels with F2 Brackets.
- Join a square lid part with 2 H2 Hinges on the side, and 1 H4 Hinge in the middle. Make 2 square parts.
- Fix in place with M5 6mm screws.



### 2 Prepare 4x2 ft. Cage

- Add L4 and L3 Brackets to the top rim.
- L3 at corners and L4 at sides.
- Install beams.



### 3 Install Lid

- Fix central square to the cage.
- Keep both ends openable.
- Lock/unlock the lid with Thumb Screws.

