

LED Bluetooth Controller Manual

Technical Parameters

Product Name	RGB Light
Support System	Android4.4 and above/iOS10.0 and above
Signal Mode	Bluetooth 4.0

Download App Software

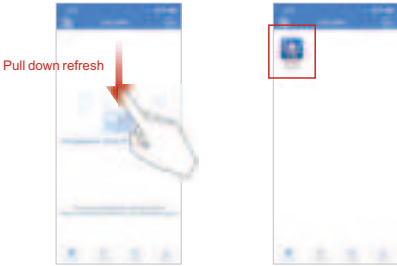
Please search LED LAMP in major Appcenters, or scan below QR code.



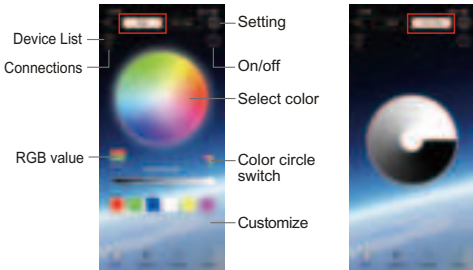
- ☆ First of all, you need to turn on the Bluetooth function of your mobile phone.
- ☆ Android phone users, also turn on the location function and allow permissions.

Instructions

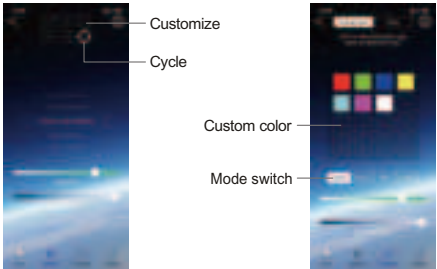
On the home page, manually pull down to refresh, the APP will automatically search for nearby devices, and click the "LED BLE 00-XXXX" device to enter the lighting control interface.



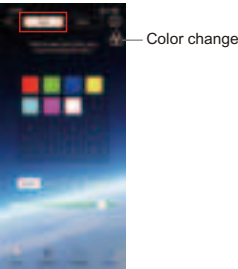
1. Color: color circle and single color. You can adjust the color at will, customize the color, and adjust the brightness of the white light by dragging the ring.



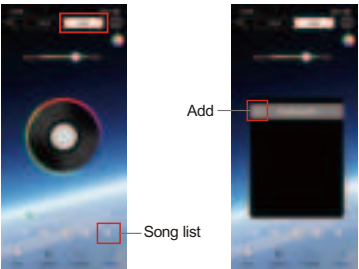
2. Mode: Select one of the modes to add a custom mode.



4. Music: There are voice control and music, and the voice control can set the color, mode, sensitivity, and change the effect of the light. Music can be changed by playing songs on the phone.



Music to add songs, first click on the song list, enter the list, and then add download



FCC Caution: Any changes or modifications not expressly approved by the party responsible for compliance could void the user's authority to operate this device.

This device complies with Part 15 of the FCC Rules. Operation is subject to the following two conditions:

- (1) This device may not cause harmful interference, and
- (2) this device must accept any interference received, including interference that may cause undesired operation.

Note: This device has been tested and found to comply with the limits for a Class B digital device, according to part 15 of the FCC Rules. These limits are designed to provide reasonable protection against harmful interference in a residential installation. This device generates, uses, and can radiate radio frequency energy and, if not installed and used following the instructions, may cause harmful interference to radio communications. However, there is no guarantee that interference will not occur in a particular installation.

If this device does cause harmful interference to radio or television reception, which can be determined by turning the device off and on, the user is encouraged to try to correct the interference by one or more of the following measures:

- Reorient or relocate the receiving antenna.
- Increase the separation between the device and receiver.
- Connect the device to an outlet on a circuit different from that to which the receiver is connected.
- Consult the dealer or an experienced radio/TV technician for help.

Radiation Exposure Statement
This device complies with FCC radiation exposure limits set forth for an uncontrolled environment. This device should be installed and operated with a minimum distance of 20cm between the radiator and your body.