

FISHER & PAYKEL

GAS COOKTOP

CG301DLPGB4 FP AA

PRODUCT CODE: 81993-A

PARTS MANUAL

AA

CONTENTS

Introduction	2
Hob top components	3
Basepan and gas components	5

INTRODUCTION

BRAND	VOLTAGE	MODEL	PRODUCT CODE
Fisher & Paykel	220-240V 50Hz	CG301DLPGB4 FP AA	81993-A

MODELS

The models covered by this manual are listed on the front cover.
The information detailed in this manual is subject to change without notice. The latest version is indicated by the reprint date and replaces any earlier editions.

KIT PARTS

Where a part number is shown against the descriptions for kit components, they are also available as separate items. In addition, some parts may be supplied with these kits that are not available as separate items, and are therefore either not listed, or a part number is not shown against the part description in this manual.

PARTS LIST KEY

NI	As a part reference, indicates the part is not illustrated on the diagram.
NOT USED	As a part number, indicates the diagram part reference is not used in this manual.
NS	As a part number, indicates the part is not servicable.

NZ

Fisher & Paykel Appliances Ltd
PO Box 58-546, Greenmount
78 Springs Rd,
East Tamaki
New Zealand

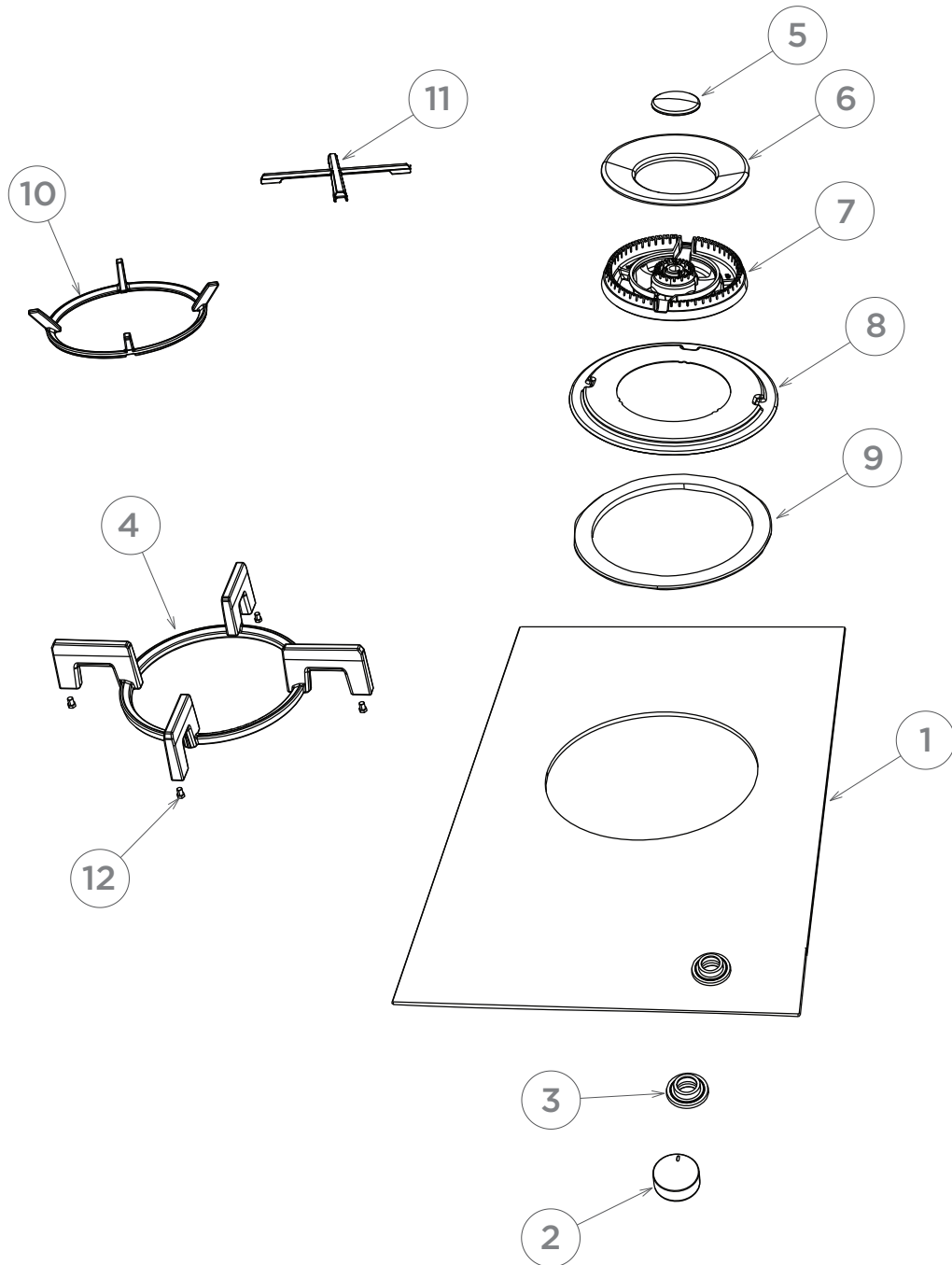
tel: (09) 2730660
fax: (09) 2730580
email: customer.care@fp.co.nz

AU

Fisher & Paykel Customer Services Pty Ltd
PO Box 798, Cleveland, QLD 4163
A.C.N. 003 3335 171
19 Enterprise Street Cleveland, QLD 4163
Australia

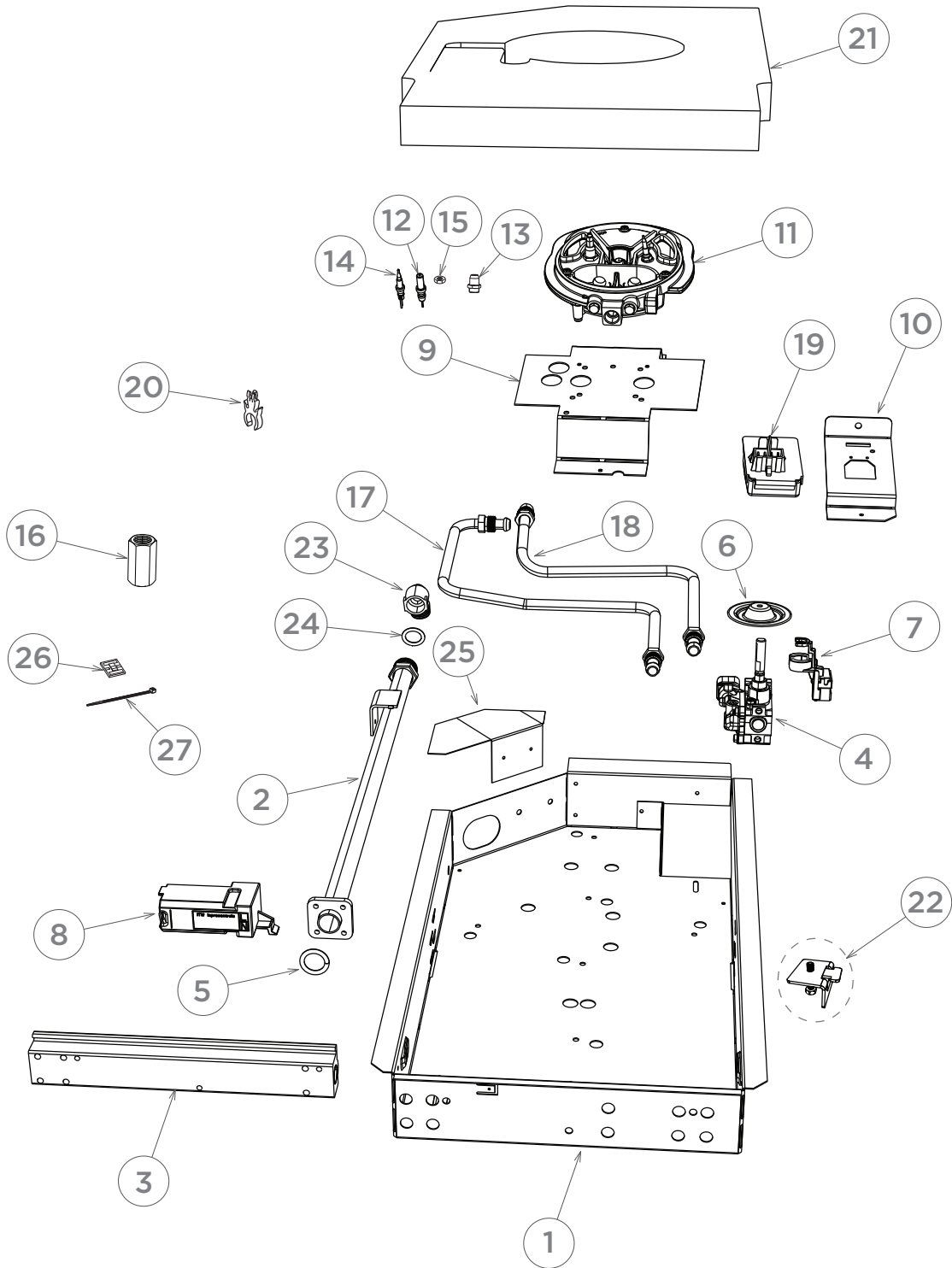
tel: (07) 3826 9100
fax: (07) 3826 9164
email: customer.care@fp.com.au

HOBTOP COMPONENTS



HOBTOP COMPONENTS

REFERENCE	PART NUMBER	PART DESCRIPTION
1	536788P	GLASS BKT ASSY CG301 BLK SP
	Includes	GLASS GAS BLACK 301
	Includes	TRIM BLACK 300
	Includes	BEZEL TAPE ASSY VBL BLACK
2	536566	DIAL ASS CT VBL18 BK
3	536841	BEZEL TAPE ASSY VBL BLACK CT
4	533909	WOK TRIVET ASSY GF
	Includes	FOOT BRASS TRIVET X 4
5	533890	CAP INNER BURNER DUAL WOK
6	533889	CAP OUTER BURNER DUAL WOK
NI	534139P	SCREW MC M4X8 PAN PH SS (10PKT
NI	211373P	WASHER FLT SS #10 .430 (10PK)
7	536790	SPREADER BURNER DUAL WOK BLK
8	533857	SKIRT ENAMEL DUAL WOK GF
9	533916	GASKET DUAL WOK GF
10	533604	WOK SUPPORT DUAL WOK GF
11	533981	SMALL POT SUPP DUAL WOK GF
12	NS	FOOT BRASS TRIVET

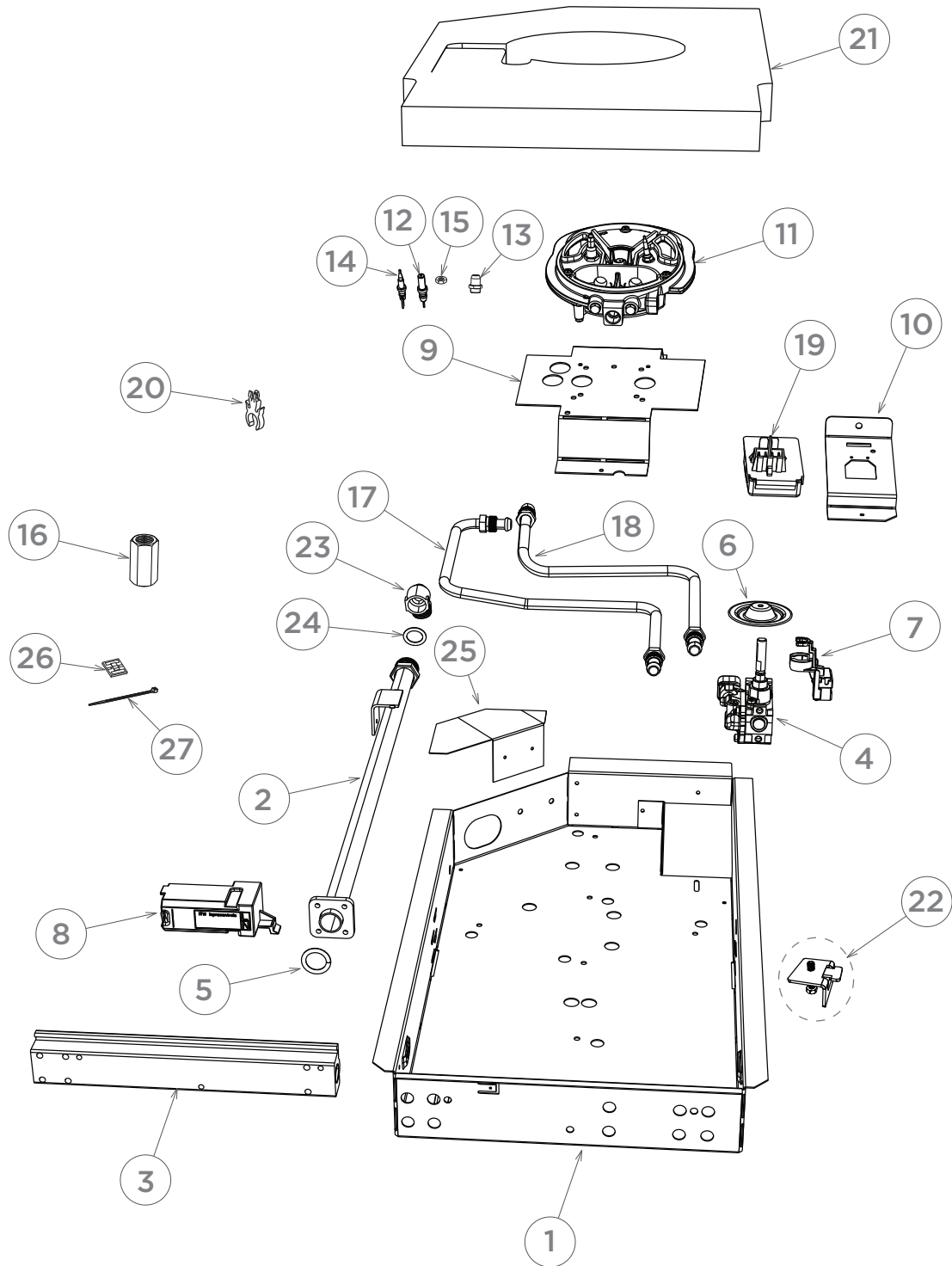


BASEPAN & GAS COMPONENTS

REFERENCE	PART NUMBER	PART DESCRIPTION
1	533683	BASEPAN 302 GF
2	533884	INLET GAS MANIFOLD GF
3	535446	MANIFOLD EXTRUDED ALUM 301
4	533670	GAS VALVE AL DUAL SABAF
5	532236P	O RING 14X3 VITON (PKT 2)
NI	534027P	SCREW M4X25 BUTTON HEX PKT10
6	534165	SEAL GAS VALVE CT
7	534306	HARNESS VALVE MICROSW GF 451
8	533993	IGNITION BOX ITW B2000 4-WAY L
NI	534006	HARNESS IGNITER EARTH
9	533809	MOUNT BURNER BOWL WOK GF
10	534043	MOUNT FLEX TERMINAL GF
NI	556003P	SCREW ST 6X3/8 T25 PAN PH PKT10
NI	556009P	SCREW ST 8X3/8 TAB MSH PHPKT10
NI	542805P	SCREW MC M4X20 HEX PH MS NP PKT 10
11	535614	BURNER BOWL DUAL WOK BF
NI	535620	JET DEFENDI TYPE4 0.85MM
NI	534017	JET DEFENDI LP 055
NI	533897	SPRING IGNITER
12	534022	IGNITER DUAL WOK 300 GF
13	533896	NUT IGNITER
14	533886	THERMOCOUPLE DUAL WOK GF
15	533954	NUT THERMOCOUPLE WOK
16	530291	TEST POINT 1/2IN
NI	556083P	SCREW TAPTITE M3.5X6 PH NP PKT10
17	535454	TUBE ASSY D WOK INNER 301
18	535455	TUBE ASSY D WOK OUTER 301
19	534905	TRMNL BLOCK-FLEX ASSY HI TEMP NZ AU
20	531715P	SUPPORT IGNITER WIRE PKT10
NI	534005	HARNESS IGNITER NEUTRAL
NI	534006	HARNESS IGNITER EARTH
21	535453	INSULATION 301 GF
22	534142	KIT BRACKET INSTALL GF
	Includes 534167	BRACKET CLAMPING COOKTOP X 4
	Includes 542805	SCREW 8X1 TAB PAN PH X 4

Continued on next page ►

BASEPAN & GAS COMPONENTS



BASEPAN & GAS COMPONENTS

REFERENCE	PART NUMBER	PART DESCRIPTION
23	530710	KIT GC ELBOW & WASHER
24	530132P	WASHER BLUE 1/2 GAS SEAL PKT10
25	534421	BRACKET REAR WALL 302 GF
26	220922	CABLE TIE MOUNT PLATE - NYLON 2
27	546309	TIE CABLE 100MM
NI	592137	BK UG CG BLK CTOP AA GB IE SEA
NI	592233	INSTL CG90/75/60/45/30AAGBIESEA

FISHERPAYKEL.COM

© Fisher & Paykel Appliances 2020. All rights reserved.

The product specifications in this document apply to the specific products and models described at the date of issue. Under our policy of continuous product improvement, these specifications may change at any time. You should therefore check with your Dealer to ensure this document correctly describes the product currently available.

For current details about model and specification availability in your country, please go to our website or contact your local Fisher & Paykel dealer.

PRODUCT CODE: 81993-A 07.20