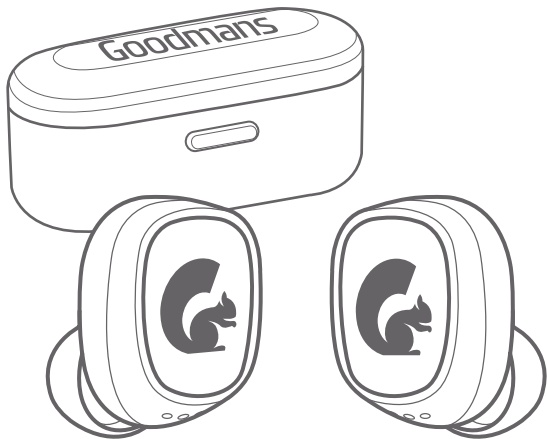


# TRUE WIRELESS EARPHONES



MODEL: 339343  
BLUETOOTH TRUE WIRELESS EARPHONES

## USER MANUAL



# Goodmans

# 1 Welcome

---

## 2 Your True Wireless Earphones

2.1 In The Box

2.2 Overview Earphones

2.3 Overview Charging Station

---

## 3 Quick Setup

3.1 Charging & Powering on

3.2 Turning ON/OFF - 2 Options

3.3 Bluetooth Pairing - Method 1

3.4 Bluetooth Pairing - Method 2

---

## 4 Features

### **Other Modes**

4.1 Single Earphone Mode

---

## 5 Troubleshooting

---

## 6 Technical Specifications

---

## 7 Customer Support

# 1 Welcome

Thank you for choosing this Goodmans product. We've been making electronics for the British people for over 70 years. Each of our products have been carefully designed to be great at what they do and this one is no exception. We hope you enjoy your new True Wireless Earphones.

---

## 2 Your True Wireless Earphones

### 2.1 In The Box

Carefully remove your True Wireless Earphones from the box.

Inside the box you will find:

- True Wireless Earphones
- Charging Station
- Micro USB Cable
- Ear Tips
- Instruction Manual
- Quick Start Guide
- Guarantee Booklet

If any of these items are missing contact Customer Support at [goodmans@bmstores.co.uk](mailto:goodmans@bmstores.co.uk)



## **Charging your True Wireless Earphones**

The True Wireless Earphones comes with a charging station that has a built-in rechargeable battery. Before using it for the first time, we recommend you charge the battery fully. Only use the supplied USB cable to charge the earphones.

Connect the USB cable to a computer USB port and the USB plug to the micro USB port of the charging station. The red LED light will illuminate while charging.

When the battery is fully charged, the red LED lights on both the charging station and earphones will turn off automatically. Remove the earphones at this point. The earphones will then be ready for use.

When the battery is low, the earphones will issue a warning tone. When this happens, charge your earphones.

## **Care & Maintenance**

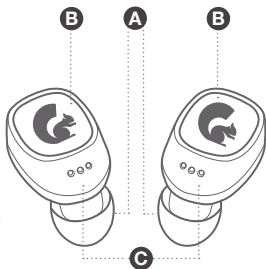
Do not expose the unit to:

- Liquid, moisture, or humidity
- Abrasive cleaning solvents
- High or low temperatures
- Sharp objects
- Fire

Do not attempt to disassemble the unit.

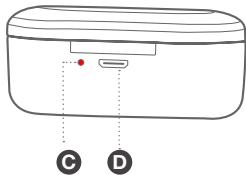
## 2.2 Overview Earphones

- A Ear Tips**  
3 soft silicone sized ear tips for you to choose from.
- B Multi-Function Button**  
Press to pause or play a song this works for both RIGHT & LEFT earphones. Only for the RIGHT earphone: When receiving a call short press the button once to answer/hang up a phone call. Long press for about 2 seconds to reject a phone call. Redial that last number you called by pressing the button twice
- C Earphone Status Light**  
Light will indicate if the earphones are on/off, pairing, and charging.



## 2.3 Overview Charging Station

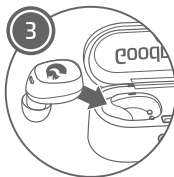
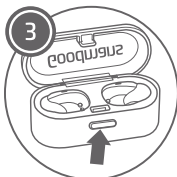
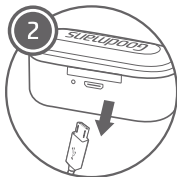
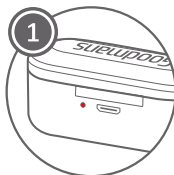
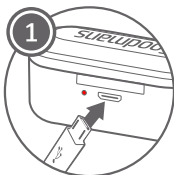
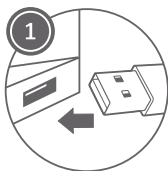
- A Earbud Charging Contacts**  
These small round metal pieces charge the LEFT & RIGHT earphones
- B Open Case Button**  
Press to open the hinge design case allows for quick charging and removal of earphones
- C LED Indicator Light**  
This light illuminate when charging and turn off when finished
- D Micro USB Port**  
For charging the station



## 3 Quick Setup

### 3.1 Charging & Powering On

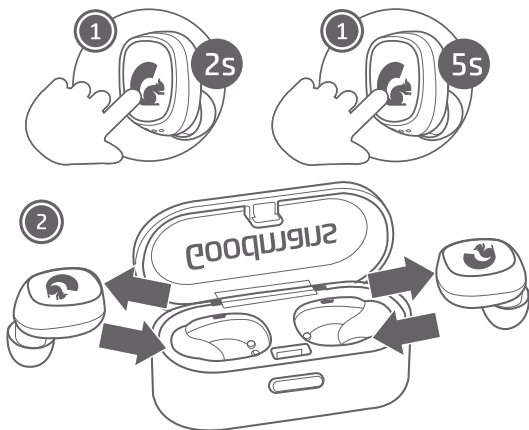
1. Connect the Micro USB cable (*only use the provided cable*) to a computer USB port or a USB wall charger. Plug the other end of the micro USB cable into the Portable Charging Station. The single RED LED light will illuminate on the back of the station.
2. When the battery is fully charged, the LED light will turn off automatically. Disconnect the micro USB cable. Your Portable Charging Station is now ready to charge your earphones.
3. Press the case button to open the top of the case and place your earphones in their initialled/designated areas. Once properly in place the LED lights on the earphones will illuminate RED. When the earbuds are fully charged the RED LED light will automatically turn off



## 3 Quick Setup

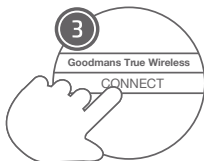
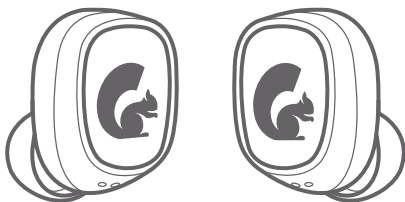
### 3.2 Turning ON/OFF - 2 Options

1. The first option is when your earphones are OFF, press and hold the (🐉) button for 2 seconds to turn ON your earphones.  
If your earphones are already ON, press and hold the (🐉) button for 5 seconds to turn OFF your earphones
2. The second option is when you remove your earphones from the charging station they will turn ON automatically. When you put them back in the charging station and close the lid they will turn OFF automatically and begin to charge if needed.



### 3.3 Bluetooth Pairing - Method 1

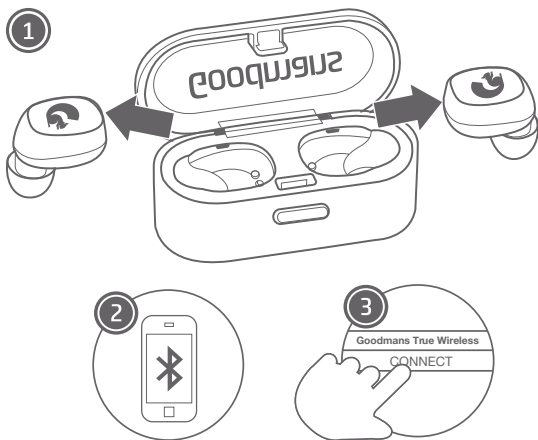
1. Press and hold the button (🐿️) on both the LEFT and RIGHT earbud for 2-3 seconds. The LEDs on the earbuds will flash red & blue and automatically connect to one another. Once the earphones are paired only the RIGHT earphone will flash red & blue steadily waiting to be paired to a device.
2. Ensure Bluetooth is enabled on your smartphone, tablet, computer, or music device.
3. The earphones will appear as “Goodmans True Wireless” in the list of available Bluetooth devices. Select “Goodmans True Wireless” and connect.





### 3.4 Bluetooth Pairing - Method 2

1. Pick up both earphones from the charging station to power on and wait for 10 seconds for your earphones to automatically enter pairing mode. Your earphones will connect to one another after a few seconds. The RIGHT earphone will flash red & blue steadily waiting to be paired to a device.
2. Ensure Bluetooth is enabled on your smartphone, tablet, computer, or music device.
3. The earphones will appear as “Goodmans True Wireless” in the list of available Bluetooth devices. Select “Goodmans True Wireless” and connect.



## 4 Features

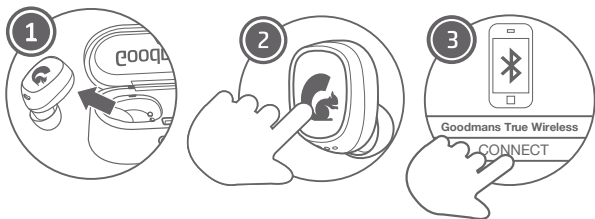
### Other Modes

#### 4.1 Single Earphone Mode



1. Remove the RIGHT earphone from the charging station-or only turn on the RIGHT earphone. NOTE: Only the RIGHT earphone has calling / microphone capabilities.
2. Turn ON by pressing and holding the (🐘) until the earphones prompt says ON. After a few seconds the earphones will go into pairing mode (flashing red & blue)

Open your bluetooth setting on your device and pair

3. again if needed. The earphones will appear as “Goodmans True Wireless” in the list of available Bluetooth devices. Select “Goodmans True Wireless” and connect.



## 5 Troubleshooting

Problem	What to do
There is no sound from my True Wireless Earphones	<p>Check that the volume is not set to the minimum.</p> <p>Make sure that a song is playing and not paused</p> <p>Check to see if the earphones are low battery</p>
Poor sound reception / quality of audio not as good.	<p>Make sure your earphones are charged.</p> <p>Make sure you are within 10m of your Bluetooth device.</p>
The buttons on the True Wireless Earphones are not working	<p>This may be caused by electrostatic discharge. Turn the True Wireless Earphones off, reconnect after a few seconds.</p> <p>Make sure that the Bluetooth function is activated on your Bluetooth device.</p>
One earphone is not connected to the other one	<p>Power off both earphones by pressing the  button for 2-3 seconds. Then power both on by holding in the same button  for 2-3 seconds. The earphones will connect automatically.</p>
I cannot find 'Goodmans True Wireless' on the Bluetooth device	<p>Repeat the steps to pair your earphones to your Bluetooth device.</p> <p>power off and power on both again at the same time</p>
Earphones are not charging	<p>Make sure the headphones are properly placed in the charging case</p> <p>Make sure the charging case battery is not depleted</p> <p>Make sure there is no dirt or debris covering the charging conductors within the charging station or on the earphones.</p>

## 6 Technical Specification

Model Number	339343
Bluetooth Version	V4.1
Bluetooth Profiles Supported	HSP, HFP, A2DP, AVRCP
Frequency Range	2.4GHz-2.48GHz
Earbud Batteries	45mAh built-in Li-polymer Batteries X 2
Charging Station	460mAh built-in Li-polymer Battery
Transmission range	10m
Charging Station Supply Power for Earphones	Up to 10 hours
Talk Time	Up to 3 hours
Music Play time	Up to 2.5 hours
Earbuds Charging Time	About 1 hour
Charging Station Charge Time	About 2 hours
Standby Time	Up to 100 hours

## 7 Customer Support

For all product support, warranty or returns; please go to **goodmans@bmstores.co.uk**

This product is intended for use within the UK

Declaration of Conformance

The full text of the EU declaration of conformity is available at the following internet address:

*<http://www.bmstores.co.uk/technical-information>*