

VoxBox Air

PrimeLight
Design

Operating Instructions

MODEL: VB3-2001

Table of contents

Chapter 1 Introduction and Caution	4
Chapter 2 Packing order and parts	5
Chapter 3 Assembling the main unit	6
Chapter 4 Collapsing the main unit	7
Chapter 5 Choose a mounting option	8
5.1. Mounting to existing 15mm rails	9-11
5.2. Mounting to a light stand	12
Chapter 6 Inserting the beamsplitter glass	13-14
Chapter 7 Positioning the interveiwer	15-18
7.1. Further notes and tips	19
7.2. Adjusting the friction hinge	20
Chapter 8 Using filters with the VoxBox Air	21
Chapter 9 Using the VoxBox Air as a Teleprompter device	22
Chapter 10 Warranty	23
Chapter 11 Support and parts	24

1. Introduction and Caution

The VoxBox Air is a mirror box which is positioned in front of the camera lens. It allows film makers to shoot down-the-lens interviews while maintaining eye contact between the interviewer and the subject. The tablet holder accessory allows the unit to be converted into a Teleprompter.

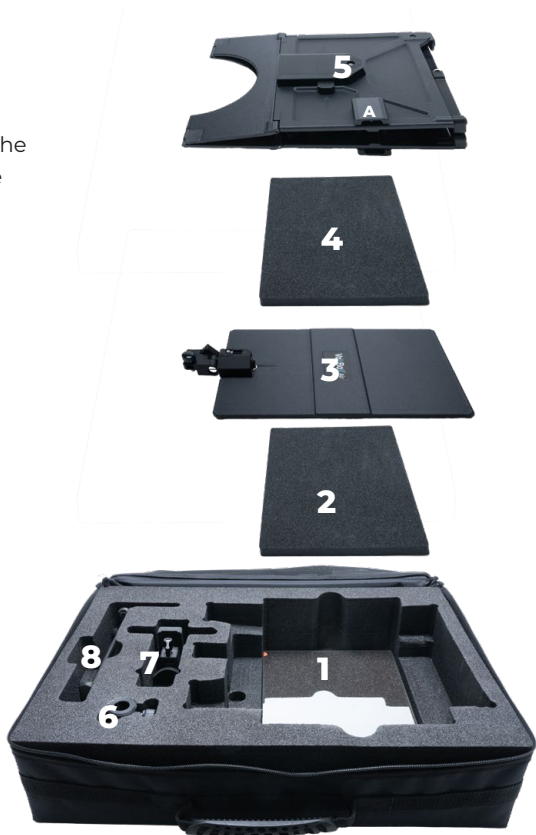
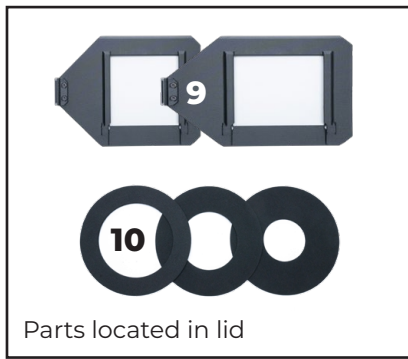


CAUTION

- This product contains sheet glass. To avoid serious injury, handle with extreme care at all times.
- The folding mechanism requires careful handling. Always follow the instructions.
- Check all folding panels and clamps are secure to ensure glass parts do not detach from the unit.

2. Packing order and parts

- 1 - Beamsplitter glass**
- 2 - Foam pad**
- 3 - Side mirror**
- 4 - Foam pad**
- 5 - Main unit** - note the orientation of the L-bracket mounting slot (A)- it must be facing you when packing.
- 6 - 16mm adaptor**
- 7 - L-bracket**
- 8 - Tablet holder**
- 9 - Filter trays (4X4" & 4X5.6" PV)**
- 10 - Neoprene doughnuts x 3**



3. Assembling the main unit

1 - Place the main unit on a firm surface.



2 - Lift the top of the main unit to allow the bottom and side panels to unfold.

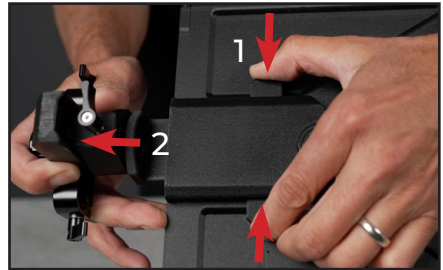


3 - Finally, align the panels and magnetic column to complete assembly.



4. Collapsing the main unit

1 - Remove the L-bracket (if using). To do this, push both quick release buttons at the same time and pull the L-bracket to release.

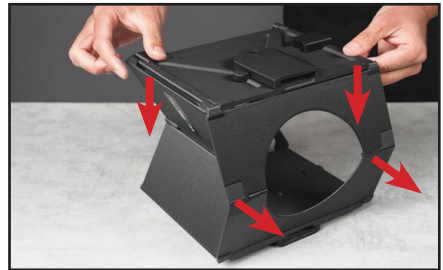


2 - On a firm surface, push the front sides of the main unit to the position as shown.



3 - With the panels as shown, gently push down on the top panel to completely collapse the unit.

NEVER FORCE THE UNIT AS THIS WILL DAMAGE THE HINGES INVALIDATE THE WARRANTY.



5. Choose a mounting option

There are two mounting options:



OPTION 1: MOUNT TO EXISTING 15MM RAILS

Recommended for full-size cameras having existing 15mm rails and medium/heavy duty tripod. We recommend this option for fast setup and best performance. ➔ Pg 9.

NOTE: The mounting hole and L-bracket slot are duplicated on the top and bottom of the main unit to enable the interviewer to sit at different positions.



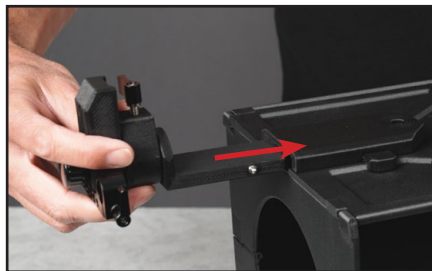
OPTION 2: MOUNT ON A LIGHT STAND

Recommended for DSLR cameras or if you do not have 15mm rails, or if your tripod is unable to support the weight of the VoxBox Air. ➔ Pg 12.

You can use the 16mm receiver (included) to attach to a light stand, or attach your own support directly using the 3/8ths inch mount on the top and bottom of the main unit.

5.1. Mounting to existing 15mm rails

1 - Attach the L-bracket ensuring that it clicks firmly into place. Note the orientation of the L-bracket as shown.



2 - Remove your matte box (if using) and ensure the 15mm rails do not extend beyond the front of the lens.

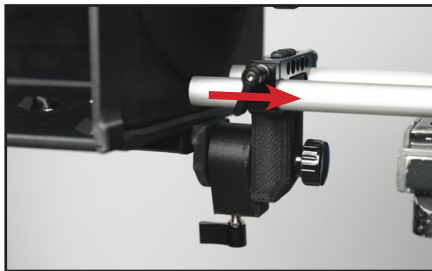


3 - Choose a suitable doughnut and fit around the rim of the lens.
NOTE: the doughnuts are designed to be stretched to fit as needed.



5.1. Mounting to existing 15mm rails

4 - Slide the main unit onto the rails. The front of the lens should be in line with the hole in the main unit (or may be pushed through if a wider focal length is used). Tighten the two levers on the railblock to secure.



5 - Use the thumbscrew to adjust the height of the main unit.



6 - The main unit height should be set as shown. Position the doughnut to create a seal around the opening at the back of the main unit.



5.1. Mounting to existing 15mm rails

If extra height is needed between the railblock and the lens, it is possible to invert the railblock.

1 - Loosen the height adjust knob enough to allow free movement of the railblock assembly.

2 - Rotate the railblock 180° and re-tighten the height adjust knob.



5.2. Mounting to a light stand

If your camera does not have 15mm rails, or if you are using a DSLR, the main unit can be mounted onto a standard light stand having a 16mm spigot.

1 - Attach the 16mm receiver into the 3/8ths inch thread on the main unit.

2 - Choose a suitable doughnut and fit around the rim of the lens.

NOTE: the doughnuts are designed to be stretched to fit as needed.

3 - Attach the main unit to a light stand and position in front of the lens.



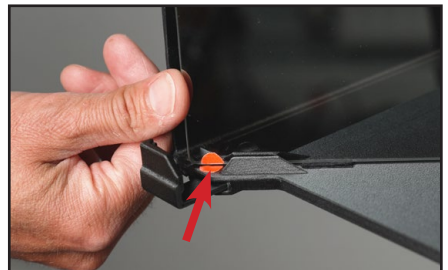
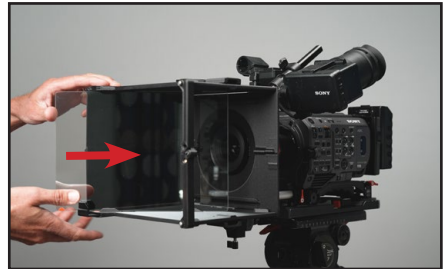
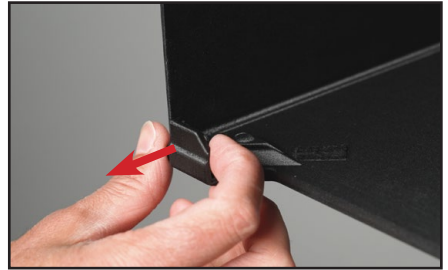
6. Inserting the beamsplitter glass

CAUTION: Handle the beamsplitter glass with extreme care; it will shatter on impact. Treat the surfaces like you would a lens. Handle only by the edges.

1 - Pull the glass retainer to release it (do not attempt to completely remove the glass retainer).

2 - Note there are two sides to the beamsplitter glass - observe the coloured sticker which indicates the mirrored surface. Align the glass with the internal rails and slide into the main unit.

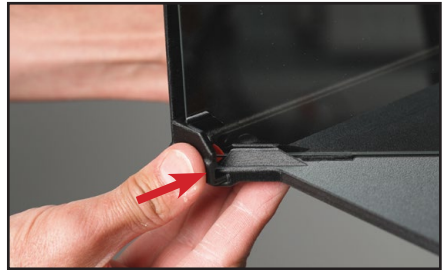
3 - The coloured stickers on the beamsplitter glass and main unit must align.



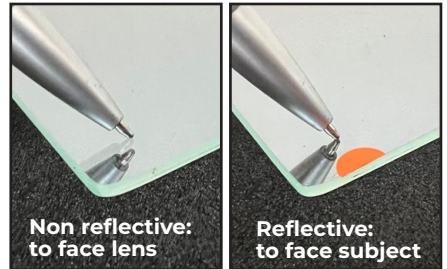
6. Inserting the beamsplitter glass

4 - Firmly push the glass retainer to clamp the glass into place. There should be a positive click to confirm it is secure.

**ALWAYS CHECK THE GLASS IS
SECURE AFTER FITTING.**



NOTE: the beamsplitter glass has special reflective coating on one side, indicated by the sticker. If this is missing, follow these steps: 1) Lay the glass on one of the foam pads. 2) Gently place a ball-point pen on the surface. 3) Compare the gap in the reflection using the guide photos, right.



TRANSPORTATION

Always store the glass as indicated by the packing guide in this manual.

CLEANING ADVICE

To clean the beamsplitter glass, brush or wash loose debris away. Clean with a lens cloth, using non-greasy window cleaner.

7. Positioning the interviewer

The VoxBox Air allows the interviewer to sit at one of four possible positions, depending on the layout of the filming area or whether the interviewer is also operating the camera.

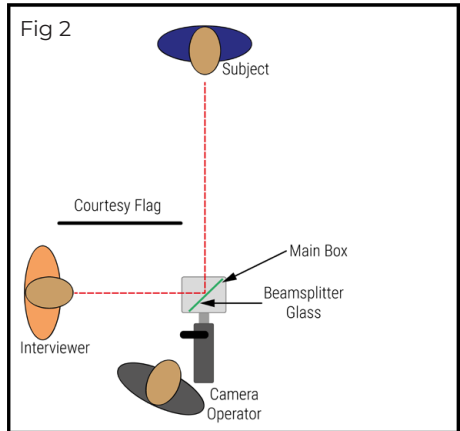
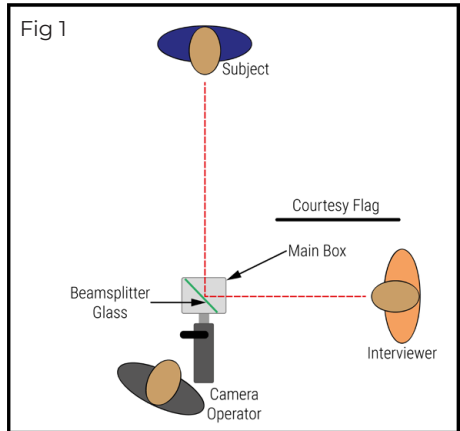
The interviewer's position is determined by the position of the L-bracket (or the 16mm receiver, if using) and the optional use of the side mirror. Both mounting options can be fitted to either the top or bottom of the main unit.

To position the interviewer camera right (Fig 1)

The interviewer sits camera right, at a 90° angle to the subject as shown in fig 1.

To position the interviewer camera left (Fig 2)

1. Detach the main unit from the L-bracket (or 16mm receiver, if using).
2. Invert the main unit and re-attach to the L-bracket (or 16mm receiver, if using).

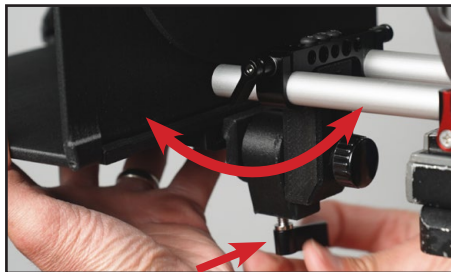


7. Positioning the interviewer

1 - The photo illustrates the point-of-view of the interviewer, viewing the subject through the mirror (in this case, the subject is demonstrated using a still photograph). The eyeline of the subject is incorrect. The main box can be rotated to adjust this. (This can only be adjusted when using 15mm rail mount).



2 - Loosen the lever on the base of the L-bracket. This will allow the main unit to be rotated by several degrees either way.



3 - Rotate the main unit until the subject is positioned as shown. The eyes should be in line with the lens as shown by the green line. This gives the optimal eyeline down the lens.

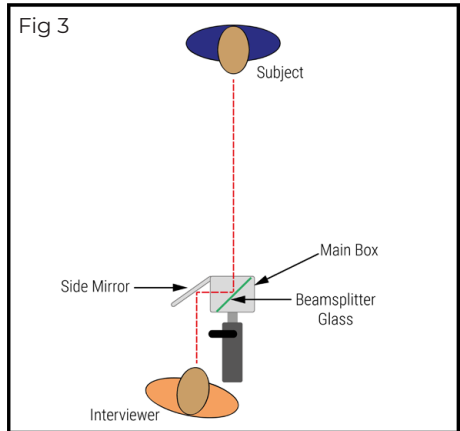


NOTE: Ensure the lever screw is re-tightened firmly.

7. Positioning the interviewer

Interviewing while operating the camera

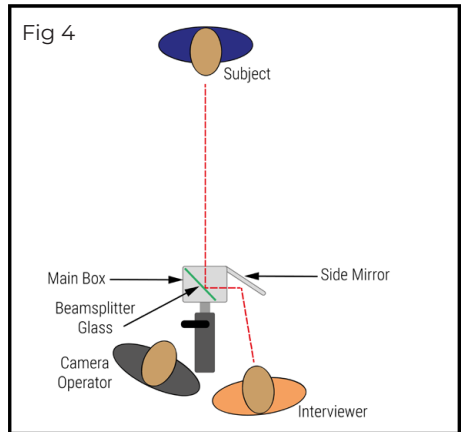
1. Fit the L-bracket so the beamsplitter glass is positioned as shown in fig 3.
2. Attach the side mirror to the main unit using the thumbscrew.
3. Position the side mirror until you can see the subject through it; see photo, bottom right.



7. Positioning the interviewer

Fourth position for the interviewer

1. Fit the L-bracket or 16mm receiver so the beamsplitter glass is positioned as shown in fig 4.
2. Attach the side mirror to the main unit using the thumbscrew.
3. Position the side mirror until you can see the subject through it, see photo, bottom right.



7.1. Positioning the interviewer

Further notes and tips

If the interviewer is not operating the camera, it is recommended that the VoxBox Air is used without the side mirror. This allows a much bigger viewing area for the subject and interviewer through the beamsplitter glass, and also allows the interviewer more distance away from the camera crew.

It is recommended that a courtesy flag is placed near the interviewer (shown in fig 1 & 2) so that the subject does not make direct eye contact off-camera.

Set the height of the camera lens to the eye level of the interviewer (as you would a traditional off-camera interview). Position the subject at a similar height to the interviewer, if possible. The subject and interviewer should always be able to see the each other's full face through the mirror so that the eyes are positioned in line with the lens.

Only use the rotation control on the L-bracket when the height of the subject and interviewer cannot be matched by adjusting sitting position etc. Rotating the main unit too far can result in the edges of the main box being seen in the final shot. For best results, use a longer focal length.

When using outdoors (or indoors near large or bright natural light sources), light can enter the main box from the open side and cause an undesirable contrast shift. This can be reduced by repositioning the unit, using flags or can be adjusted during post production.

In some circumstances, the interviewer may be in darkness and will need to be lit in order for the subject to see the face of the interviewer properly.

Using wide lenses <35mm is not compatible and the edge of the main unit may appear in shot. Use longer lenses or the camera's sensor crop feature.

7.2. Positioning the interviewer

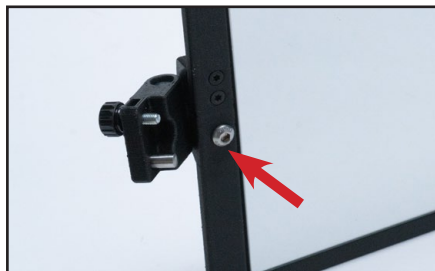
Adjusting the friction hinge on the side mirror

The amount of friction (or torque) on the hinge may need to be adjusted periodically.

1 - The lateral friction can be adjusted using a hex key.



2 - The tilt friction can be adjusted using a hex key.

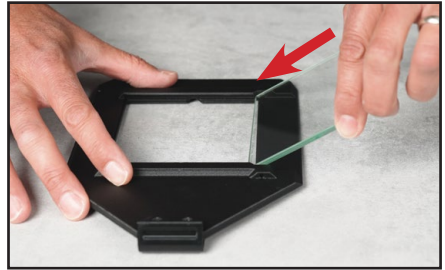


8. Using filters with the VoxBox Air

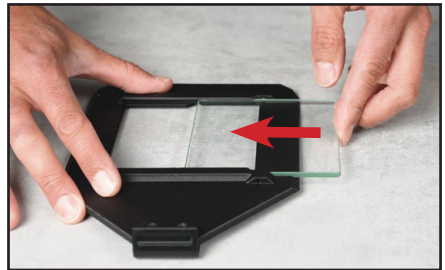
The integral filter tray system allows the use of standard 4X4" and 4X5.6" PV filters.

1 - Position the filter at a 45° angle.

Firmly push in to engage the two spring retainers.

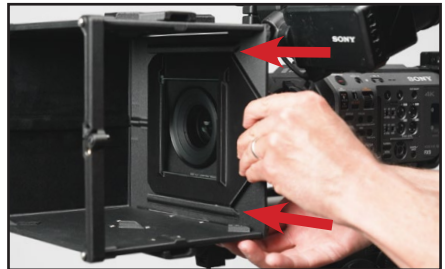


2 - Push downwards and slide filter into the tray. The design of the guides will prevent scratching of the filter as it is put into position.



3 - Align the filter tray with the guides in the main unit and push all the way in.

NOTE: If the beamsplitter glass is fitted, it will be necessary to slide it out of position slightly to allow the filter tray to be inserted.



9. Using the VoxBox Air as a Teleprompter device

The VoxBox Air can quickly be converted into a Teleprompter or used to conduct remote interviews over video calling applications. NOTE: We do not provide apps with this product.

1 - Position your device in the tablet holder and clamp the device firmly.



2 - Attach the tablet holder to the main unit. There are three locking positions, indicated on the top of the tablet holder.



3 - Set your app to flip/mirror text and adjust the width of the text to fit within the viewable area of the VoxBox Air.

For recommended applications, please see our website or social media feeds for latest news.



10. Warranty

Warranty provisions for this product are listed below

- Guarantee this product for one year against defects in product and components, under normal installation and usage to the final customer who purchased from the manufacturer or reseller.
- During the warranty period, repair the defects using new or renovated parts without any charge, or exchange the defective product with a new product or a product which has been manufactured by new or refurbished components and is functionally equivalent to the normal product.

Inapplicable Warranty

- Expired warranty period.
- If this product is made available for hire, this warranty is void.
- Breakage or damage caused by inappropriate usage, repair, maintenance and accident.
- Installation and removal with improper external equipment or improper usage.
- Fall and external shock.
- Exposure to the extreme environment of abnormal temperature, a solvent, an acid, flood and humidity.
- External damage such as scratch, dent and breakage.
- Disrepair and damage caused by installation, repair, improvement, addition, disassembly by unauthorised persons.
- Modified, replaced, removed information identifying the original product.
- Absence of valid proof of purchase.

11. Support and parts

You can purchase spare parts and get fast response support via our website:

primelightdesign.co.uk

Designed and manufactured in the UK by

PrimeLight
Design

PrimeLight Design is a trading style of
PrimeLight Films Ltd.

Registered in England & Wales: 06036110.
Ilkley, LS29 9JB, United Kingdom.

VoxBox Air is protected by:
US Utility Patent (pending)
US Design Patent

“Sony” is a registered trademark of the Sony
Corporation.
Specifications and design may change without
notice.

Notes

Notes

Notes
