



KOGAN SMARTERHOME™ 5-STAGE AIR PURIFIER 3S

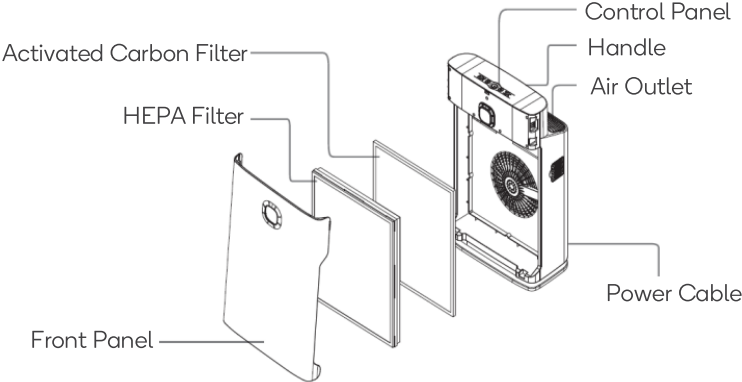
WITH H13 FILTER (340 CADR)

KASMTPRIFRA

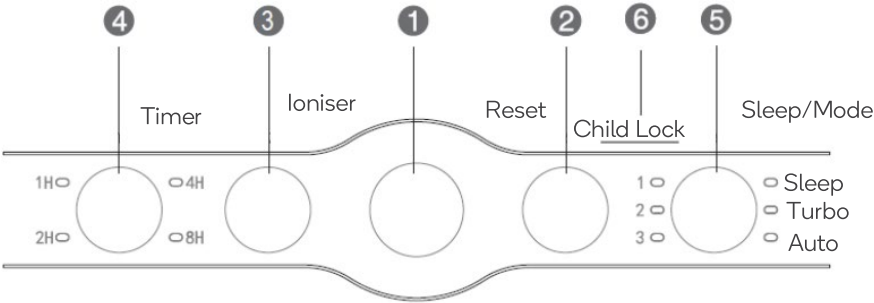
SAFETY & WARNINGS

- Read all instructions before using the appliance and retain for reference.
- This appliance is not intended for use by persons (including children) with reduced physical, sensory or mental capabilities or lack of experience and knowledge, unless they have been given supervision or instruction concerning use of the appliance by a person responsible for their safety.
- This appliance is designed for consumer use: Follow directions and use only as described.
- Handle with care and inspect regularly to ensure product is in good working order. Do not use with an extension cord unless necessary and if so, ensure it is suitably rated and it is handled safely as is the product's own power cord.
- If this product, power supply cord or plug shows any signs of damage: stop using, unplug the product and contact kogan.com support.
- Use only a 230V, 50Hz power supply. Any other power supply may cause a fire hazard or risk of shock.
- Do not allow the power cord to be exposed to water, heat, direct sunlight or overhang where it can be pulled or otherwise be damaged or pose a hazard.
- Do not place any large or heavy objects onto the appliance.
- Do not spray any paint, pesticide, alcohol or other liquid chemical on to the unit. Any chemical sprayed into the appliance will be released in the air from the air outlet.
- Do not block or insert any objects of body part into the air inlet.
- When moving the product, ensure that it is switched off or unplugged.
- This appliance contains no user-serviceable parts. If it suffers any failure or damage, cease usage and contact Kogan Support after consulting the Troubleshooting section of this manual.
- Prior to first use, remove the PE bags wrapped around the filters. Failure to do so will cause the product to not work as intended.
- Refer to the maintenance section for instruction to remove the PE bags.

OVERVIEW



Control Program Diagram



1. Power Button

Turns the unit on or off.

2. Filter Time Counter

- When the unit is powered on, the air purifier will automatically count the life of the filters. This count or ticking down function, occurs continuously throughout continued use of the unit. After reaching 2000 hours of use, the LED for Reset will flash to indicate that the filter needs to be replaced.
- To turn the LED off, press and hold the Reset button for 3 seconds (after which a beep will be heard).
- After a new filter is installed, press and hold the Reset button for 5 seconds (after which 3 beeps will be heard). The LED will be turned off and the time counter will reset.

3. Negative Ion Button

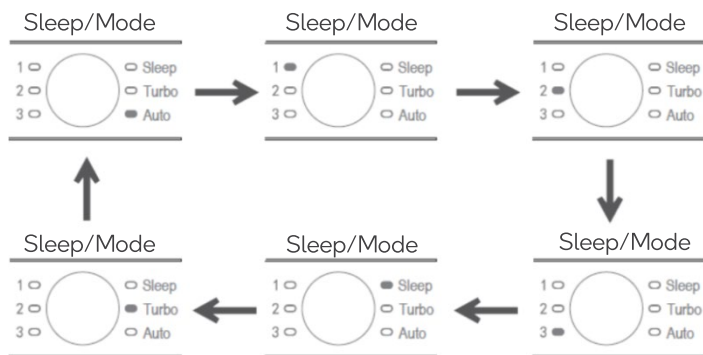
- Pressing this button will turn on the ionising function and the corresponding LED will turn on. Pressing it again will turn it off.

4. Timer

- Pressing this button will schedule unit shutdown.
- The timer range cycles through the following order of hours: [1→2→4→8→OFF]

5. Speed Setting

- Pressing to select 1 of 6 different speed settings.
- In Auto mode, the unit will adjust automatically based on air quality level.



6. Child Lock function

- Press and hold Reset and Speed/Mode buttons simultaneously for 3 seconds to activate child lock: all other inputs will be disabled.
- With child lock active, the power button indicator will flash every 0.5 seconds.
- Press and hold Reset and Speed/Mode buttons simultaneously for 3 seconds again to deactivate.

7. Digital Display

- Displays PM2.5 air quality level.
- Wi-Fi indicator:
 - Flashes during app pairing
 - Solid while connected
 - Off while disconnected

Press the Ionizer/Wi-Fi button for 5 seconds to initiate pairing.

8. Air Quality

- The product will automatically detect the indoor air quality.
- The follow table describes the air quality indicators:

Air Quality Level	Value (ug/m³)	LED Colour
Good	>150	Green
Warning	76–150	Blue
Critical	1–75	Red

APP INSTALLATION

Download the “Kogan SmarterHome™” app from the Play Store (Android) or App Store (iOS).

Register

If you do not have a Kogan SmarterHome™ account, register or sign in with a verification code sent by SMS.

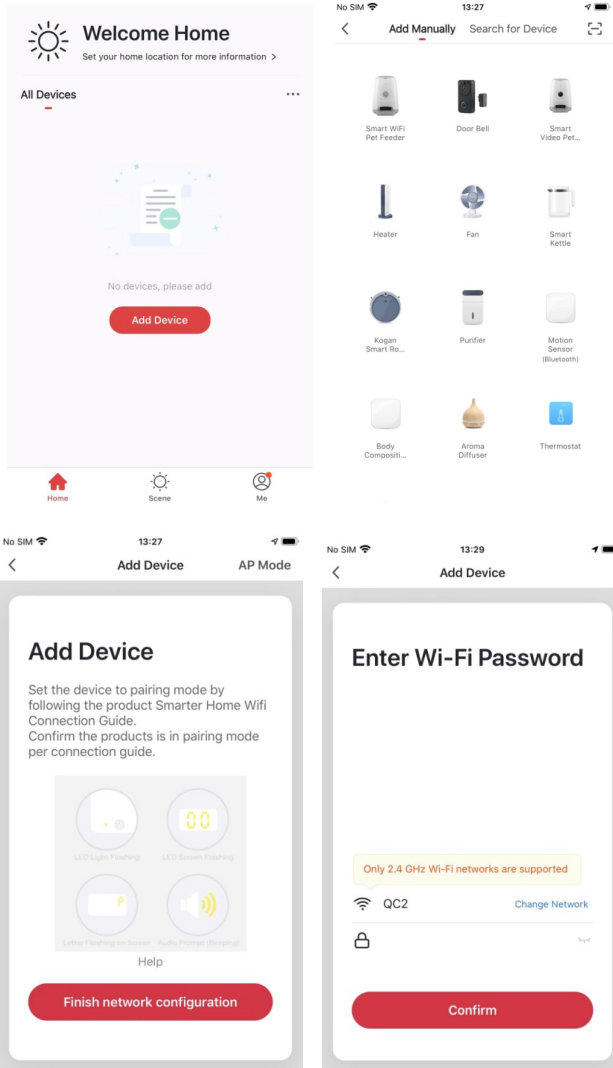
To register:

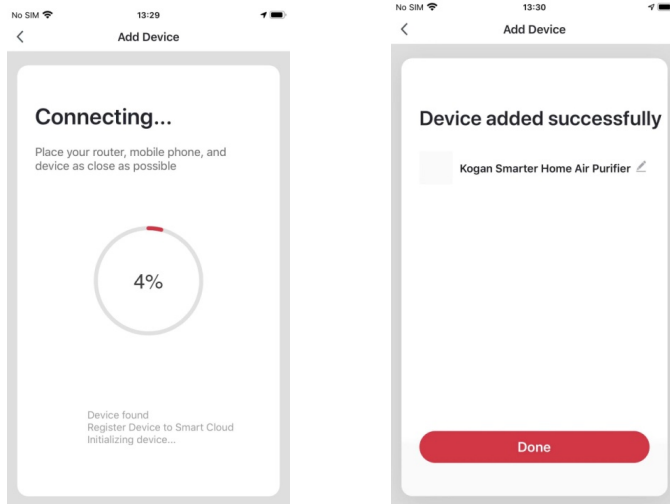
1. Tap to enter registration page.
2. The system automatically recognises your country/area. You can also select your country code manually. Enter your mobile phone number/email address and tap “Next”.
3. If you choose the mobile phone number option, then enter the verification code in the message sent to you by SMS. Set a password as prompted and press “Confirm” to finish your registration.

The image displays two side-by-side screenshots of the 'Register' screen in the Kogan SmarterHome app. Both screens have a red header with a back arrow and the title 'Register'. The left screenshot shows the initial state with a 'Region' dropdown set to 'Australia +61 >', an empty 'Mobile Number/E-mail' text field, and a grey 'Next' button. Below the button is a link: 'By clicking next, you agree to the [Kogan.com Terms & Conditions](#)'. The right screenshot shows the same screen after input, with the 'Mobile Number/E-mail' field containing 'XXXXXXXX' and the 'Next' button now highlighted in a darker grey. The same terms and conditions link is present at the bottom.

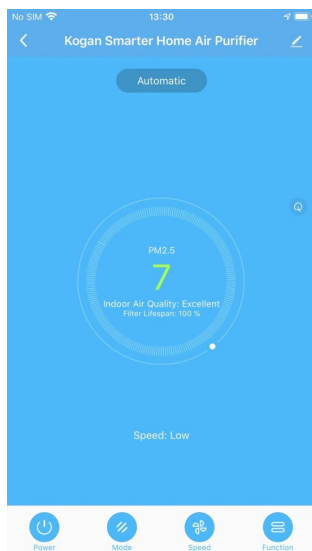
Add Device through Network

1. Power the SmarterHome™ device on and follow the product-specific instructions to enter the Wi-Fi-connect mode.
2. Open Kogan SmarterHome™ app and tap “+” in the upper right to add a new device through the network.
3. Ensure the device’s indicator light rapidly flashes and tap “Confirm light is rapidly flashing”.
4. Select Wi-Fi network (note: network must be 2.4GHz band) and enter the password. The device will commence the pairing process and connect to the app.





5. After successfully configuring the devices, the device will be shown on the home page. Tap to enter its control page.



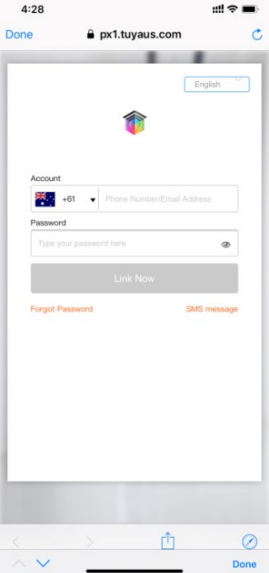
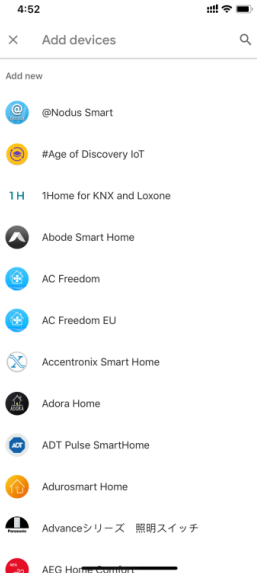
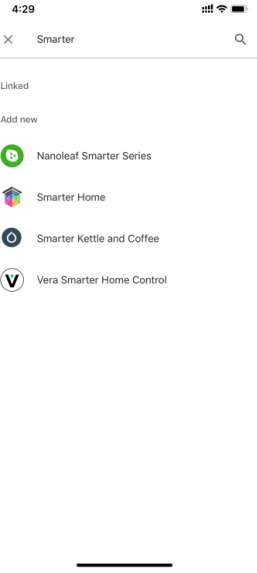
Note:

- When device is online, it can be controlled.
- When device is offline, it displays “Offline” and cannot be remotely powered on.

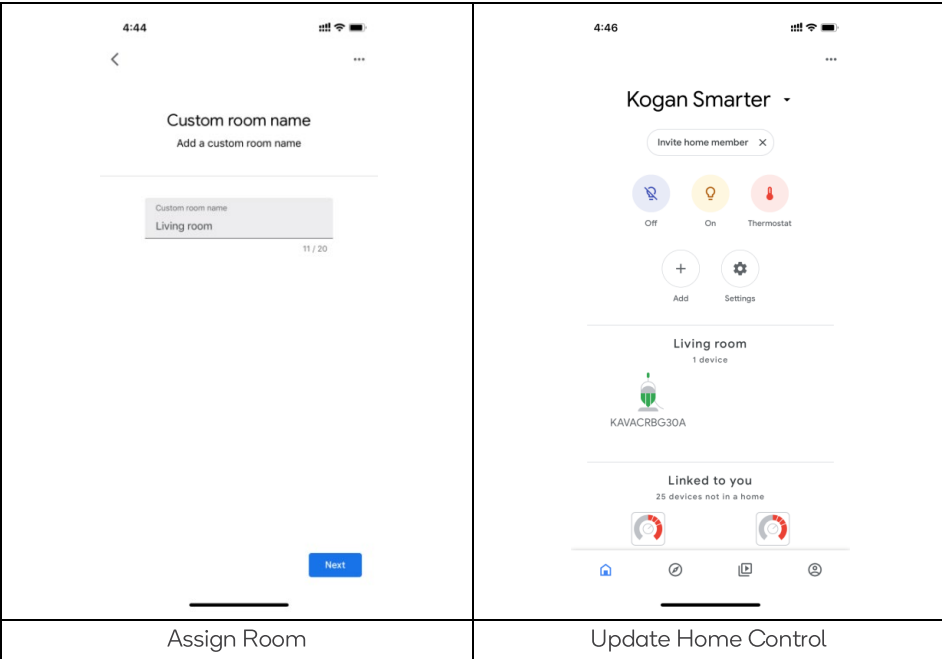
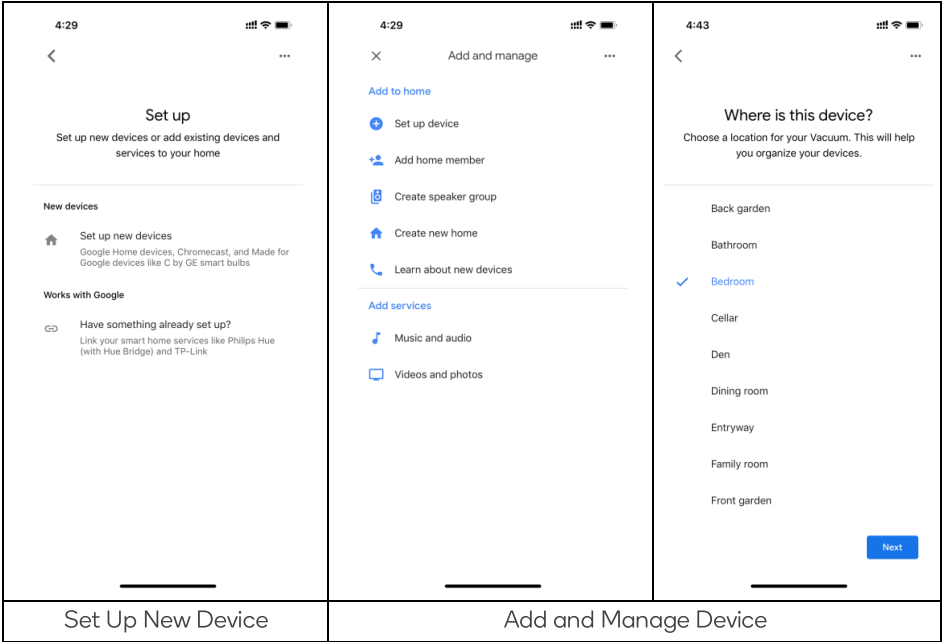
GOOGLE HOME CONTROL

Note: You will need to have set up a Google Home account prior to linking your Kogan SmarterHome™ device.

1. Select “Menu” and then “Home Control”.
2. In the “Home Control” screen, select the “+” icon in the bottom right.
3. A list will appear showing actions and a search function to access more apps from here, install the SmarterHome™ app.

		
Login to App	Add Device	Select Device

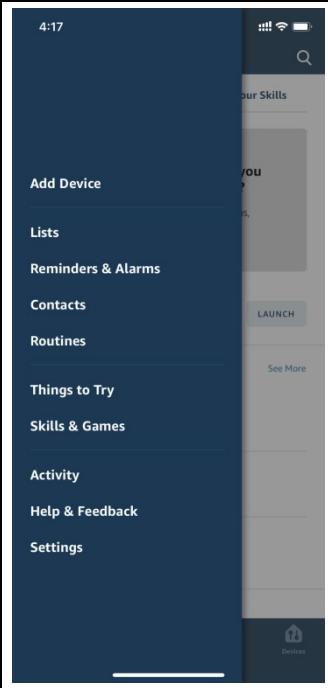
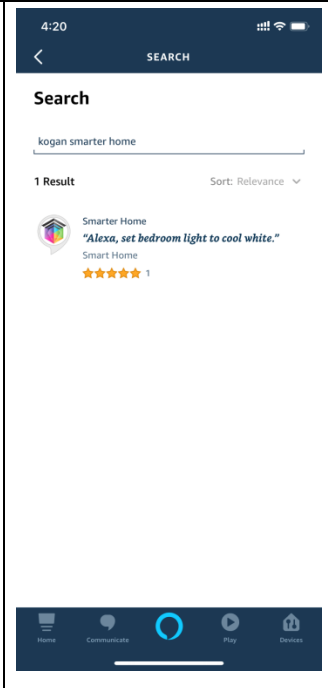
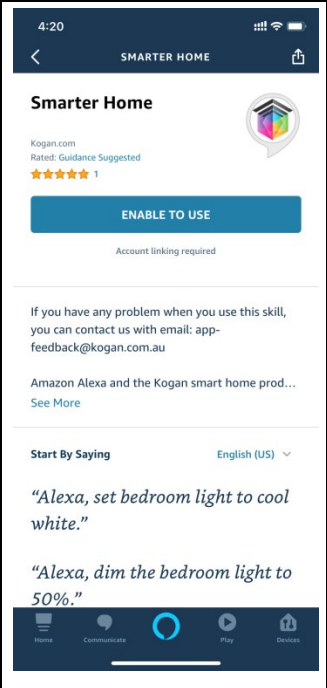
4. Log in to your SmarterHome™ account with your email address or mobile number.
5. Once linked, it will show the devices linked to your account, you can assign them to rooms. You will be prompted to authorise apps to sync.
6. Click “Done” and then it will give you a list of commands available.
7. When successfully linked, you will see it on your “Home Control” screen at the bottom of the app screen. You can now control your Kogan SmarterHome™ devices through Google Home.

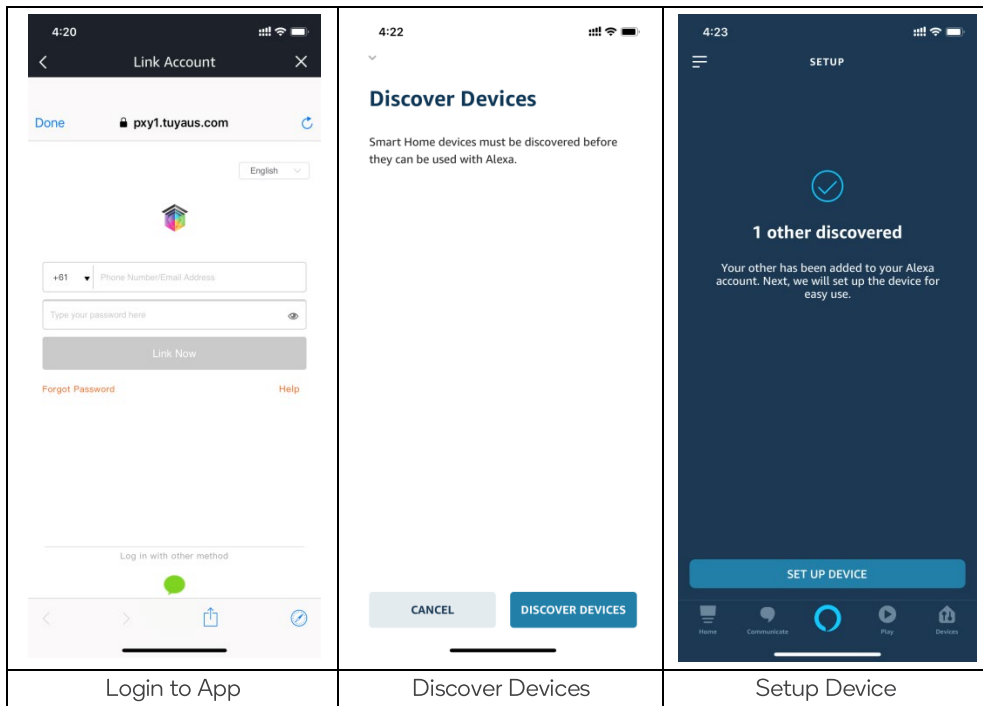


ALEXA

Note: You will need to have set up an Alexa account prior to linking your Kogan SmarterHome™ device.

- 1. Select “Menu” and then “Skills”.
- 2. Search for the app and enable it.
- 3. Login to your SmarterHome™ account with your email address or mobile number.
- 4. Select “Discover Devices” and the app will begin searching.
- 5. When successfully linked, you will see a list of connected Kogan SmarterHome™ devices. You can now control your Kogan SmarterHome™ devices through Alexa with your voice.

 <p>A screenshot of the Alexa mobile app interface. The 'Menu' is open on the left side, showing options like 'Add Device', 'Lists', 'Reminders & Alarms', 'Contacts', 'Routines', 'Things to Try', 'Skills & Games', 'Activity', 'Help & Feedback', and 'Settings'. The 'Skills' option is highlighted.</p>	 <p>A screenshot of the Alexa mobile app search results for 'Smarter Home'. The search bar shows 'kogan smarter home'. Below the search bar, it says '1 Result' and 'Sort: Relevance'. The result is 'Smarter Home' by Kogan, with a rating of 5 stars and a sample voice command: 'Alexa, set bedroom light to cool white.'.</p>	 <p>A screenshot of the Alexa mobile app showing the 'Smarter Home' skill page. The skill is listed as 'Kogan.com' with a rating of 5 stars. There is a blue button labeled 'ENABLE TO USE'. Below the button, it says 'Account linking required'. There is also a section for 'Start By Saying' with sample voice commands: 'Alexa, set bedroom light to cool white.' and 'Alexa, dim the bedroom light to 50%'.</p>
Alexa Account Setup	Search App in All Skills	Enable App



Login to App

Discover Devices

Setup Device

SPECIFICATIONS

Input Voltage	230V - 50Hz	CADR	340m ³ /h / 205CFM
Rated Power	80W	Temperature/humidity applied	0-40°C / 20-90%
Noise Level	55dB	Storage Temperature/humidity	-10-60°C /20-90%
Net/Gross Weight	6.8kg/8.5kg	Dimensions	374 x 201 x 594mm

MAINTENANCE

- To extend the life of the unit, maintenance should be performed regularly.
- Before performing any maintenance, switch off the unit and unplug it.
- Filter replacement is noted through the filter time counter on the control panel.
- The HEPA filter and active carbon filter must be replaced at the same time.

1. External clean

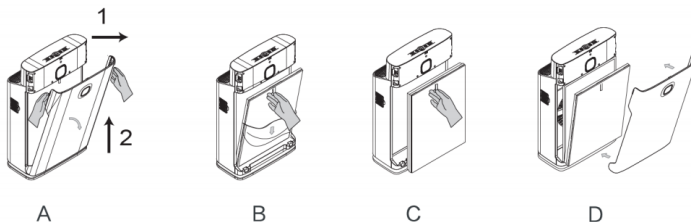
- Wipe with a soft and clean cloth.
- Do not use alcohol, gasoline, benzol or other chemical cleaner to clean the unit.

2. Removal of PE bag

- Open the front panel of the device and remove the filters. Refer to the below diagram for how to access the filters.
- Each filter will be wrapped with a PE bag, this can simply be removed and the filters placed back into the unit.

3. Cleaning and replacing filters

- Refer to the below diagram for how to access the filters.
- A: Hold both upper sides of the unit, pull out the front panel and lift it upward.
 - **Note:** The black sponge used in front of the HEPA filter can be washed with water and can be re-used after dry. It is recommended to wash this sponge every 3 months to extend the life of the HEPA filter.
- B: Pull down the strap on the filter to take out the HEPA filter.
- C: Pull down the strap on the filter to take out the activated carbon filter.
- D: Once filters are replaced, firmly replace the front panel at the bottom first and then the top.
 - **Note:** Filters must be replaced in the same order.



TROUBLESHOOTING

Issue	Check	Solution
Failure to power on	Check if the switch is on	Switch the unit on from the power button
	Check if the plug is loose	Correctly plug the unit into a power source
	Check if the front panel is correctly installed	Correctly install the front panel of the unit
Unit operating sound, very low and weak air output	Check if the filter PE bags have been removed	Remove the PE bag and install the filters in the correct order
	Check if the air outlet or inlet is blocked	Switch off the unit and remove any obstruction to the air inlet or outlet
Air outlet has an odour	Check if there are any objects with odour placed near the unit's air inlet	Remove any odour-causing objects
	Check if the filters need to be replaced	Replace the filters if necessary

Need more information?

We hope that this user guide has given you the assistance needed for a simple set-up. For the most up-to-date guide for your product, as well as any additional assistance you may require, head online to **help.kogan.com**

kogan