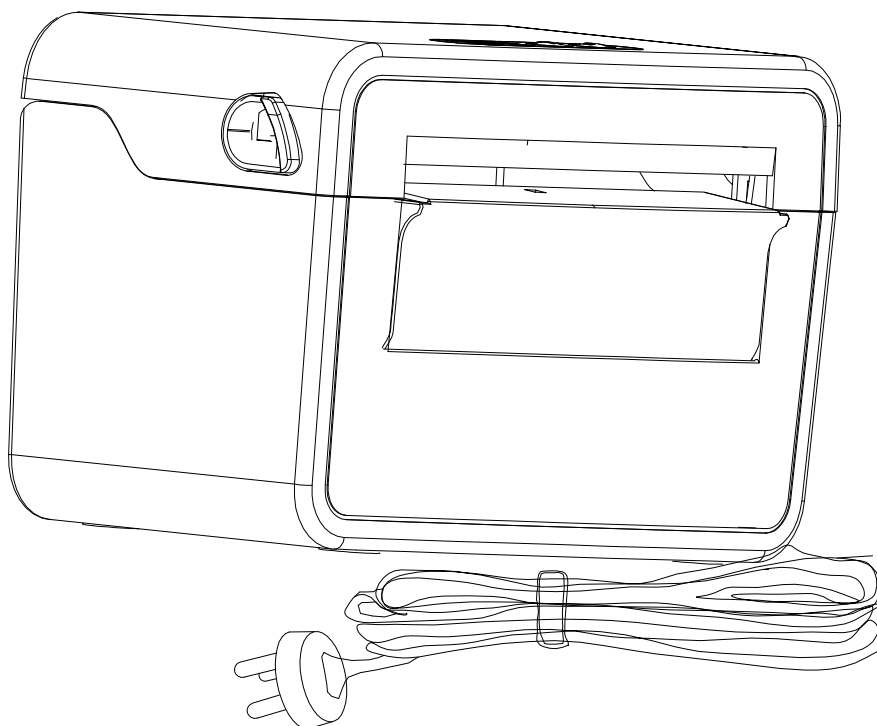


# Thermal printer

---

Model:TP875



Please read this user guide before being usedDo  
please keep your user guide for reference

## – Introduction of the machine

Thank you for purchasing our own thermal printer.

This series of machines uses large capacity label paper design, if the internal paper 5 OD (outer diameter) capacity can not meet, just choose the external paper

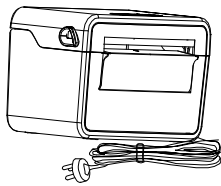
frame after this printer can support industrial standard 7 OD (outer diameter)

paper capacity.

This printer can meet the requirements of real-time, batch printing labels, through the USB interface and other equipment connection, to provide thermal

printing mode. The printer supports a wide range of printed paper types, available, with a variety of printing materials, including thermal roll paper and folded thermal label paper.

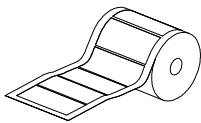
## = The crates



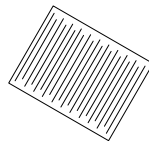
printe



USB Cabel



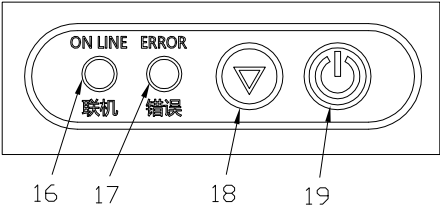
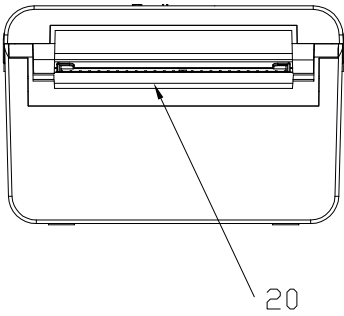
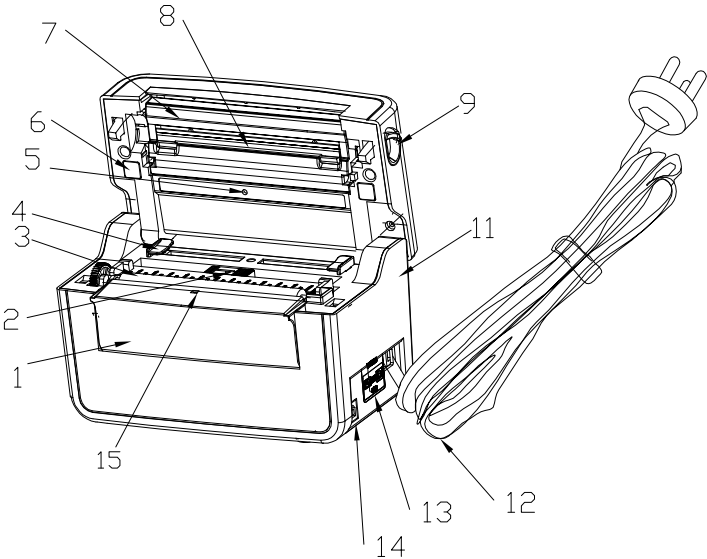
Test paper roll  
(not standard)



Simple

1. Open the packing box, remove the printer and all the accessories, and check whether it is complete.
2. Keep all the packaging materials for future use when transporting the printer.

≡ Appearance and components



- 1 paper outlet baffle
- 2 Paper delivery roller
- 3 Down to the sensor set
- 4 The paper guide
- 5 Top cover automatic support
- 6. Upper sensor
- 7 Print head bracket
- 8 Print head
- 9 Upper shell switch
- 10 Upper shell
- 11 Lower shell
- 12 The front-facing sensor
- 13 The USB interface
- 14-sided single paper
- 15 Online indicator (power lamp)
- 16 Error indicator light
- 17 Function key
- 18 Power button

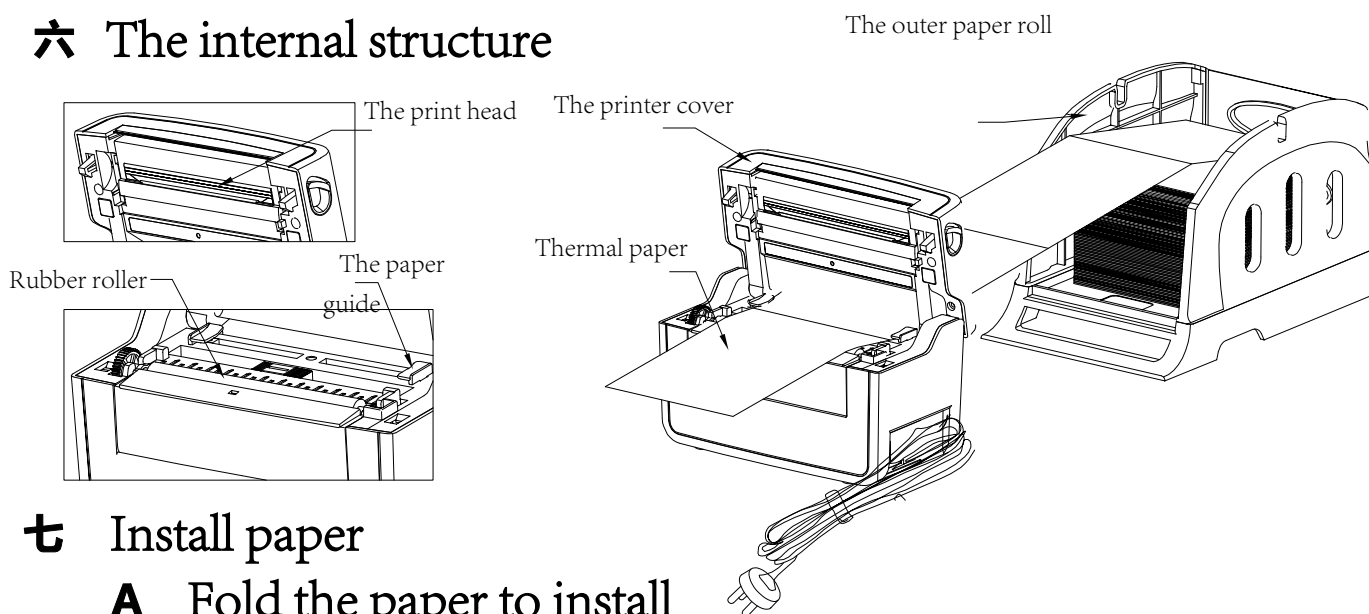
四 Technical parameters

put a seal on	Print way	temperature-sensitive
	resolution ratio	200DPI
	print out rate	Maximum 2300mm / s; normal 127mm / s
	print span	104m m
	Print head temperature probe	thermal resistor
	Print head position probe	inches switch
	The paper exists for detection	photosensor
	communication interface	USB
med ium	Paper type	Thermal sensitive roll paper, no adhesive paper, etc
	Medium width	40mm ~118mm
	Paper roll outer diameter	Maximum of 120mm
sour ce	Paper way	Rip from
	import	200-240V~50/60HZ 2.0A

五 main features

- 1. Support thermal coil paper / adhesive paper;
- 2.100 ~ 260 mm/s high-speed printing;

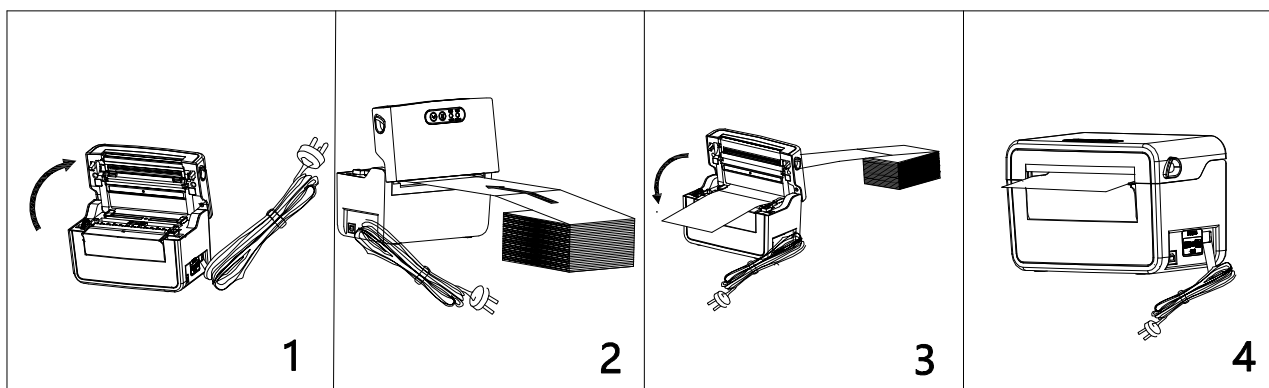
## 六 The internal structure



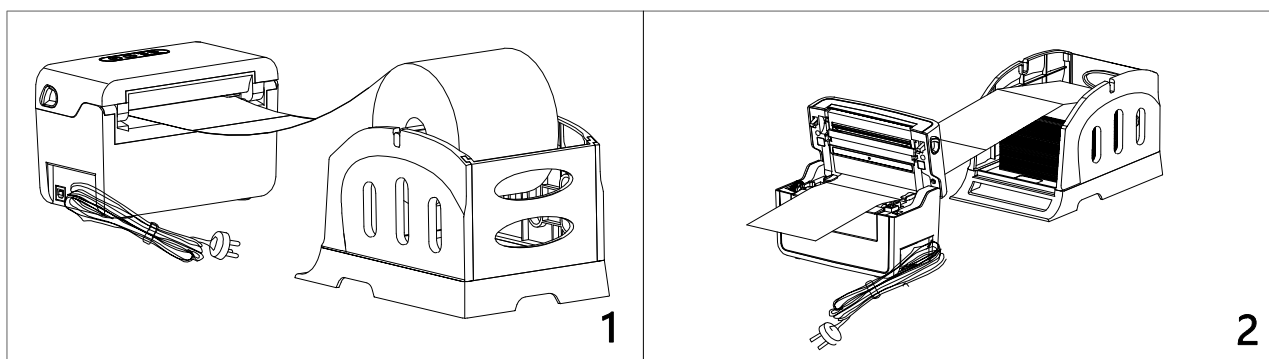
## 七 Install paper

### A Fold the paper to install

- 1, both hands index finger gently pull back on both sides of the switch, printer cover automatic bounce off;
- 2, remove the folding thermal paper, thermal paper along the machine into the mouth wear into the machine;
- 3, will and stretching machine of leading paper device of thermal paper through the external;
- 4, will be printed label paper reserve 1 cm on machine export outside, then cover the printer cover and can be switched on.



### B The outer paper roll installation



## 八 Instructions

When the printer is ready (LED green always light), press the function button and the label paper will go to the front of the next sheet of label paper.(After printing the correct labels)

When the power supply of the printer is off, please confirm that the printer has covered the top cover of the printer, press the function key and turn on the power supply of the printer. At this time, the printer will automatically print the test page and release the function key.

\* When using the boot function, it is best to use a wide continuous paper (such as: 80mm wide receipt paper) so that the printed content can be fully displayed.

## 九 The LED light show

The LED indicator light has the instructions	explain
The power light is always on, and the error light is out	The printer power is on and is in the normal print status
The power lamp is off and the error lamp is on for 80ms for 160ms	Printer open cover
The power lamp is off, the error lamp flashes between 160ms twice and then 320ms	Printer lack of paper
The power and error lights are 160ms flash	When the printer continuously the the protection protection. When the temperature returns to normal, the printer automatically returns to the normal printing state

## + Troubleshooting

The contents of the table below is general operators common problems and solutions; If you are in accordance with the situation we suggest ways to troubleshoot, and printers are still not functioning, then please get in touch with you to buy the manufacturer's customer service department, in order to get more help.

hitch	Possible factors	The exclusion method
The power supply indicator light is not on	* The AC socket plug and the power supply plug and the printer socket are not properly connected * Printer power switch is not on	# Check the power connector and verify that the AC power supply outlet and the power supply device plug are properly connected to the printer # Turn on the power supply switch
	* Print header holder is not closed	# Please close the print head holder
	* With paper stuck inside the printer	# Clean up the inside of the printer
The online indicator light is not on	* Label, paper exhausted * The label installation path is incorrect * Gap sensor detected incorrect	# Install the new label paper # Please adjust the specification and print according to the label installation steps
Can't print	* Check whether the data cable is well inserted * The pin foot within the serial cable is not in a one-to-one form	# Reconnect the transport lines # If you use a USB cable, confirm that the drive port in the PC is the USB virtual print port. If there are multiple, please try to print one by one # Please replace a new transmission line # Wrong clean print head or print concentration setting # The connection line of the print head is bad. Please turn off the printer Source, reconnect a single print head cable # Please confirm that the cable of the stepper motor is properly connected
Poor printing quality	* Label paper was installed incorrectly * Dust or adhesive adhesive on the print head * Improper print concentration setting * Print, with head damage	# Please reinstall the consumables # Please clean the print head # Please clean the rubber assembly wheel # Please readjust the printer print concentration and print speed # Please print out the self-test value to check whether the print head is damaged. If the print head is damaged, please return to the factory and replace the print head # Please replace the appropriate label paper # The els may be made if the thickness exceeds 0.22mm The printing quality decreases # Please confirm that the print head holder is fully closed
Paper skipping occurs while printing	* Label size setting is incorrect or incomplete * The label sensor is covered with a foreign body * Lower sensor group dislocation	# Please readjust the specifications and print them # Please reduce the gap value and print # Please remove the foreign matter between the sensors # Please confirm the lower sensor group position

## FCC Statement

Note: This equipment has been tested and found to comply with the limits for a Class B digital device, pursuant to part 15 of the FCC Rules. These limits are designed to provide reasonable protection against harmful interference in a residential installation. This equipment generates, uses and can radiate radio frequency energy and, if not installed and used in accordance with the instructions, may cause harmful interference to radio communications. However, there is no guarantee that interference will not occur in a particular installation. If this equipment does cause harmful interference to radio or television reception, which can be determined by turning the equipment off and on, the user is encouraged to try to correct the interference by one or more of the following measures:

- Reorient or relocate the receiving antenna.
- Increase the separation between the equipment and receiver.
- Connect the equipment into an outlet on a circuit different from that to which the receiver is connected.
- Consult the dealer or an experienced radio/TV technician for help.

This device complies with part 15 of the FCC Rules. Operation is subject to the following two conditions:

- (1) This device may not cause harmful interference, and
- (2) this device must accept any interference received, including interference that may cause undesired operation.

Any changes or modifications not expressly approved by the party responsible for compliance could void the user's authority to operate the equipment.

This equipment complies with FCC radiation exposure limits set forth for an uncontrolled environment. This equipment should be installed and operated with minimum distance 20cm between the radiator & your body.

