

15.6 Inch 4K Lapdock User Manual



In order to ensure your safe use of this product, please read this manual carefully before using this product and keep it properly.

Table of contents

Chapter 01 Preparations

- Welcome!
- Checking the package contents
- Monitor introduction
- Product Appearance & Interface Function Introduction
- The functions of the bracket & keyboard

Chapter 02 Specifications

Chapter 03 Connecting

- TYPE-C signal transfer
- Supported Devices & Models (Type-C)
- HDMI signal transfer

Chapter 04 Setting Up(Windows10)

- 1.Extend Mode /Duplicate Mode/Display Mode
- 1-1.Way1: Set on the device'Display Settings
- 1-2.Way2: Set via Windows key + P keyboard shortcut
- 2.How to get Keyboard & Touch fuction?

Chapter 05 Screen Adjustment

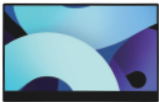
- On-Screen Display Menu Introduction
- Press pulley button to enter 'MENU'
- Press forward button to the second OSD page
- Press forward button to the third OSD page
- Save settings

Chapter 06 Q&A

Chapter 07 Service Support

Chapter 01 Preparations

Checking the Package Contents



Portable Monitor



Magnetic Keyboard



PD Power Adapter



Mini HDMI to HDMI Cable



Type-C to Type-C Cable



USB A-C Cable

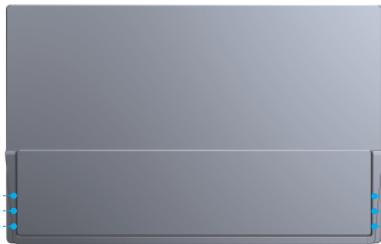
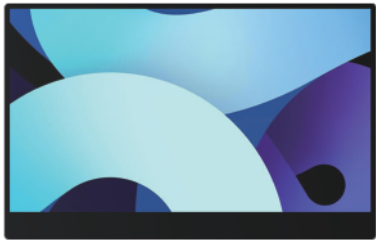


User Guide

Note:

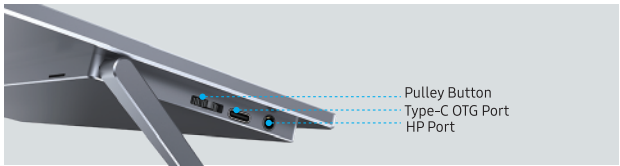
- If any of the above items is damaged or missing, please contact us immediately.
- The appearance of the components may differ from the images shown.

Monitor Introduction

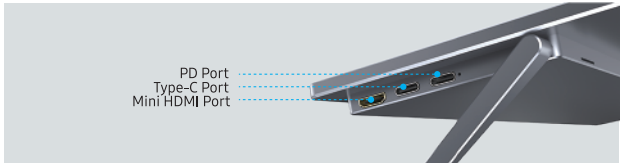


PD Port
Type-C Port
Mini HDMI Port

Pulley Button
Type-C OTG Port
HP Port



Pulley Button
Type-C OTG Port
HP Port



PD Port
Type-C Port
Mini HDMI Port

Product Appearance & Interface Function Introduction

① Pulley Button:

Press to enter 'MENU';

Roll 'up' to quick adjust 'brightness';

Roll 'down' to quick adjust 'volume';

② Type-C OTG Port:

Can be connected to mouse and keyboard

③ HP Port:

3.5mm headphone jack

④ PD Port:

Only for power supply

⑤ Type-C Port:

For both signal transmission and power supply

⑥ Mini HDMI Port:

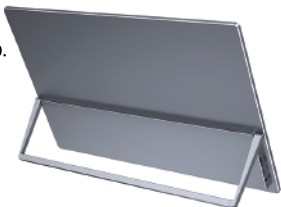
Only for signal transmission

The functions of the bracket & keyboard

The bracket supports 180° opening up.



0°~180° Adjustable



The keyboard is magnetic and can be directly attached to the monitor.



Chapter 02 Specifications

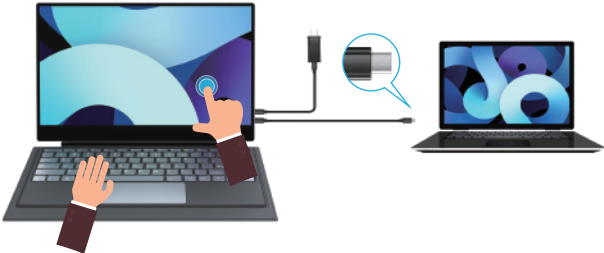
Color	Silver
Model	M156E04
Resolution	3840*2160
Battery Life	4-5h
Brightness	300 cd/m ²
Color Gamut	72% NTSC, 98% sRGB
Display Color	8 bit
Interface	PD Port
	Type-C Port
	Mini HDMI Port
	Type-C OTG Port
	3.5mm Headphone Jack
Panel Type	LED
Speaker	1W8Ω * 2
Material	Aluminum alloy
Display Dimension	344.16 × 193.59 mm (H×V)
Machine Dimension	355.2 × 221.4 × 9.9 mm

Chapter 03

Connecting

TYPE-C signal transfer

Note: 4K monitor needs higher voltage power, for a more stable power supply, it is recommended to use our original PD adapter to power.



Supported Devices & Models (Type-C)

Laptop Model	
Brand	Model
Apple	Macbook 12", Macbook 13" 2017、MacbookPro 2016/2017/2018、 New Macbook Air 2018、 iPad Pro 2018
Google	ChromeBook Pixels、 PielBook Pen、 MagicBook
Lenovo	YogoC930、 Yogo 5 Pro、 Yogo 6 Pro、 ThinkPad XI Carbon2017、 Miix 720、 Legion Y7000/Y7000P/Y7000K
Dell	XPS13、 XPS15、 G3/G5/G7、 Inspiron 5000/7000
HP	Pavilion X2、 EliteBook Folio G1、 EliteBook 1050 G1 Microsoft Surface Book2
ASUS	U306、 U321 series、 U4100、 ROG series
Huawei	Matebook D、 Matebook X、 Matebook X Pro、 Matebook E、 Matebook 13
Razer	Blade Stealth
More Brands	Continuous update...
Note: Please check the Type C port of your PC/Laptop whether supports audio and video signal transmission(Thunderbolt3). If it is just a Type C for charging, you need connecting HDMI to transmit signal.	

Mobile Phone Model	
Brand	Model
Samsung	S8、 S8+、 S9、 S9+、 S10、 S10+、 S10e、 Note8、 Note9
Huawei	Mate10、 Mate10 Pro、 Mate20、 Mate20 Pro、 Mate 20X、 Mate P20、 Mate P20 Pro、 HonorNot10、 Mate P30、 Mate P30 Pro
More Brands	Continuous update...
Note: Please check the Type C port of your phone whether supports audio and video signal transmission (USB 3.1).	

HDMI signal transfer

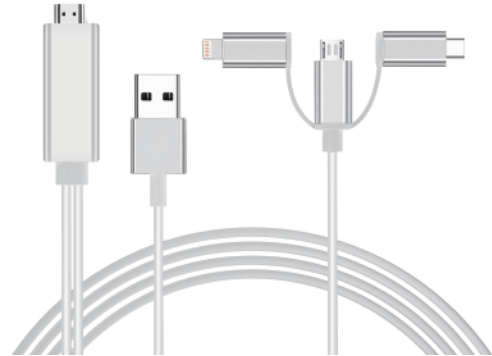
Note: 4K monitor needs higher voltage power, for a more stable power supply, it is recommended to use our original PD adapter to power.



NOTE: No TOUCH & KEYBOARD function when connecting to game devices.

Note:

1. You have to use an USB A-C cable to connect for KEYBOARD & TOUCH function while you connect the lapdock to devices via mini HDMI port.
2. If the Type-C port of your laptop/ phone is not full-featured or the port of your phone is micro USB port, Lightning port, for example: Google Pixel 3, you need to buy the adapter below. In order to enhance our customer experience, you can contact us and we will send you for free.
3. If you use an adapter to connect monitor to other devices, there will be no touch and keyboard function. However, you could also connect to the OTG port for other brands' keyboard.



HDMI to Android/ iOS Adapter

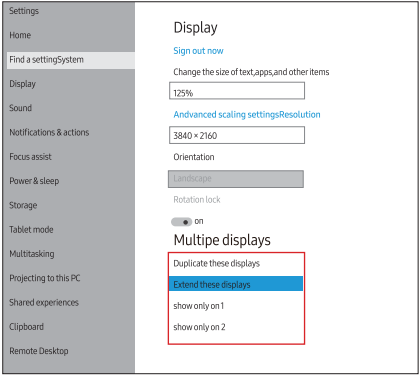
Chapter 04

Setting Up(Windows10)

Extend Mode /Duplicate Mode/Display Mode

Way1: Set on the device'Display Settings

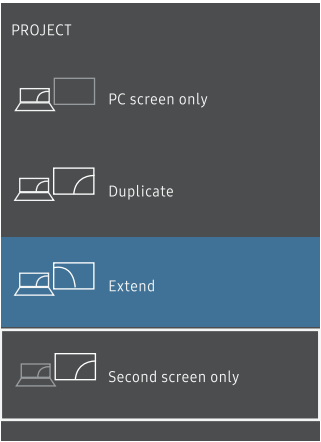
- A: Verify that your cables are connected properly to the new monitors.
- B: Right-click anywhere on your desktop and select Display settings to open the Display page.
- C: Scroll down to Multiple displays, then select an option from the drop-down list to determine how your desktop will display across your screens. For the largest work area, select Extend desktop.



Note: If you cannot see the additional monitor(s) listed, click Detect. If does not work, try restarting your computer and do steps again.

Way2: Set via Windows key + P keyboard shortcut

- A: Verify that your cables are connected properly to the new monitors.
- B: Enter the “Windows” key and “P” keyboard at the same time.
- C: select an option from the drop-down list to determine how your desktop will display across your screens. For the largest work area, select Extend desktop.

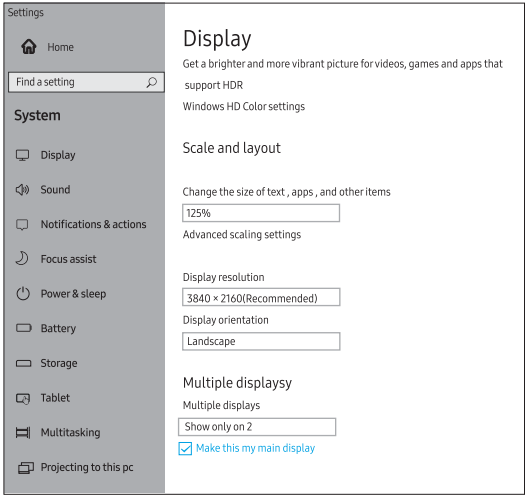


Note: If you cannot see the additional monitor(s) listed, click Detect. If does not work, try restarting your computer and do steps again.

How to get Keyboard & Touch fuction?

Set the Monitor As Main Screen

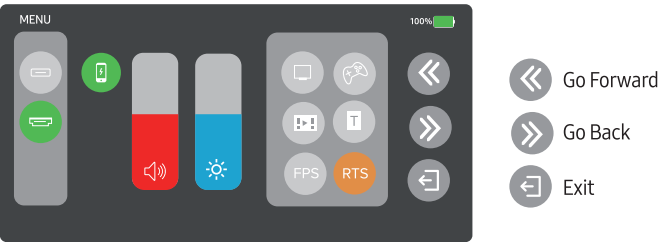
- 1: Verify that your cables are connected properly to the new monitors.
- 2: Right-click anywhere on your desktop and select Display settings to open the Display page.
- 3: Under the "Multiple Displays" section, select the monitor that you want to adjust "Show only on 2".
- 4: Check the choice "Make this my main display", then the monitor screen is your main screen and you can touch.



Chapter 05 Screen Adjustment

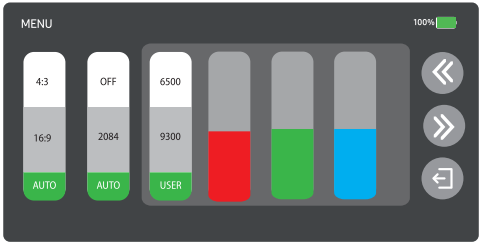
On-Screen Display Menu Introduction

Press pulley button to enter 'MENU'



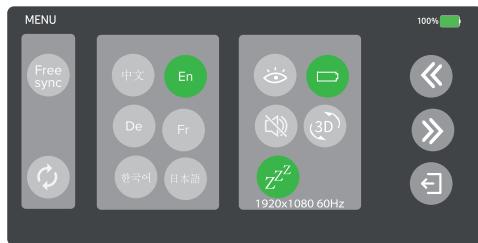
On First OSD Menu, you can tap to choose:
Signal Source: Type-C/ Mini HDMI.
Charging logo: which means that the battery logo will be displayed on the screen when it is turned on when charging.
Volume.
Brightness.
ECO Mode: Standard, Movie, Game, Photo, FPS, RTS.

Press forward button to the second OSD page



Tap to choose:
Contrast Ratio: 4: 3, 16: 9, AUTO. RGB: 6500, 9300, USER.
HDR: OFF, 2084, AUTO. Color Balance: Red, Green, Blue.

Press forward button to the third OSD page



Tap to choose:

Free Sync.

Reset.

Language: Chinese, English, German, French, Korean, Japanese.

Eyecare.

Mute.

Sleeping Mode: Power Saving Mode. The monitor will be off automatically without signal input.

Reverse Charging to your device: ON by default.

(NOTE: If it is turned off, reconnect the Samsung phone, the desktop mode will not be activated, so please let it be on.)

3D Sound Effects: Mild change of sound.

Save settings

How to save all the settings of the monitor?

1.If it is an HDMI signal source, the monitor settings can be directly

2.If it is a TYPE C signal source, the monitor need to connected to an external power supply first, then you can save the settings.

Chapter 06

Q&A

Q: The monitor keeps switching and flicker, although it connected to outlet for extra power supply.

A: This situation is generally caused by insufficient voltage; Please check whether the factory-packed cables are used, and then check whether an external PD power supply is used. The power consumption of 4K monitor is relatively larger, and an external PD power supply is required.

Q: Can we supply energy from power bank without using self power adapter?

A: That depends on the output of the power bank, because this monitor requires at least 15W power supply.

And if the output of your power bank is only 10W, this power bank will not supply enough energy for the monitor.

The output of power adapter we provide is 30W, so a power bank with output above 30W is recommended.

Q: Is it possible to set the default contrast? I have to adjust each time from 10% to 70%, each time I connect to my Macbook Pro laptop.

A: How to save the settings of brightness, volume, etc.

·When the HDMI port is used for display and monitor powered by PD port, all the settings will be saved automatically.

·But when the Type-C port is used for display without external power supply, brightness and volume will not be saved after the monitor is powered off, this design is to avoid that the monitor doesn't work when connected to phones which could not provide enough power for monitor with high brightness setting. So to avoid the brightness is reset everyday, please give the monitor an external power supply with "PD" port and do not cut off the power.

Actually, all the portable monitors on Amazon all have this same design.

Q: Does the monitor support Free Sync function?

A: Yes, it does. Please note that this feature must be in "Game Mode" mode. Please refer to the "Introduction to OSD" in the instruction manual, and set the display to "Game" mode.

Q: The output resolution of the monitor is less than 4k 60hz, what is the reason?

A: 1. Check the display settings on the device and adjust the resolution to 4k;
2. Connect to another device and check if the output resolution is 4k;
3. If it still cannot be adjusted, please check whether the graphics card of the device supports 4K. If your graphics card does not support 4K, the output resolution of the monitor will also be lower than 4K;
4. If the above methods can not solve the problem, please contact us. Our professional team will give you a satisfactory answer within 12 hours.

Q: The power indicator is on, but the screen is black or the screen is fixed.

A: 1. Please use the factory-packed cables we have equipped;
2. Please check whether there have video signal transmission;
3. Check whether the monitor is in the default extended mode, please change to duplicated mode/mirror mode, and then the screen will be displayed;
4. If possible, please try to connect to another device.
4. If the above methods can not solve the problem, please contact us. Our professional team will give you a satisfactory answer within 12 hours.

Q: Touchscreen isn't responsive or not working.

A: 1. For mobile phones
① Touchscreen is not working when connecting to a mobile phone supporting USB3.1. Please contact us to upgrade the display program.
② Touchscreen isn't responsive or not working if the phone doesn't support USB3.1. Please check the phone model to ensure if it supports USB3.1.
2. For game devices (Nintendo, XBOX, PS4, etc.), the touch-function is unresponsive.
3. For Computer/Micro-host. Please check the connection. Please use the genuine cable provided. Incorrect connection may arouse touch-function unresponsive in most cases. The following picture is an example. The left picture is the correct connection, and the right picture is the wrong connection. SPlease refer to the picture.
4. If the connection is correct and the touch-function is still unresponsive. Please try another computer. If it failed, please contact us for the replacement of the touch cable.

Chapter 07

Service Support

Dear Customer,
Thank you for purchasing the Portable USB Monitor!
We offer 100% money back guarantee in 30 days and 90 days replacement, 12 months warranty for any issue, professional tech support to ensure no-worry service.
Any query or problem, please contact us via

