



ifi

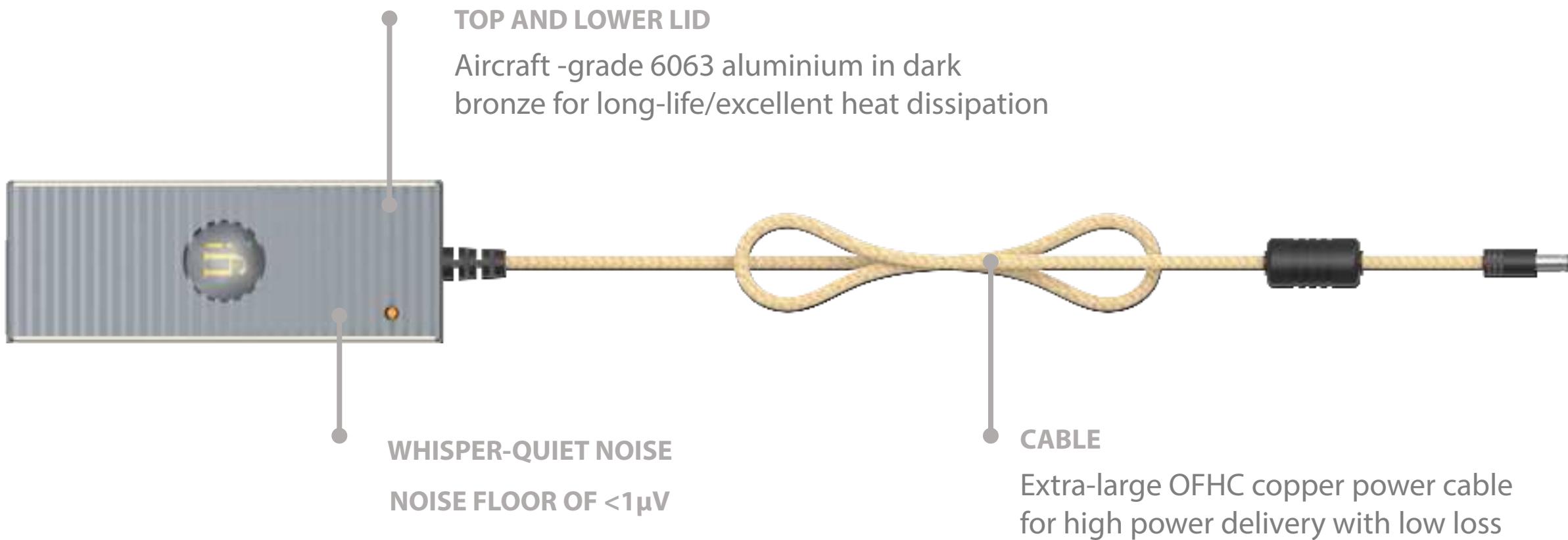
## **iPower Elite Lowdown**

*iPOWER ELITE*

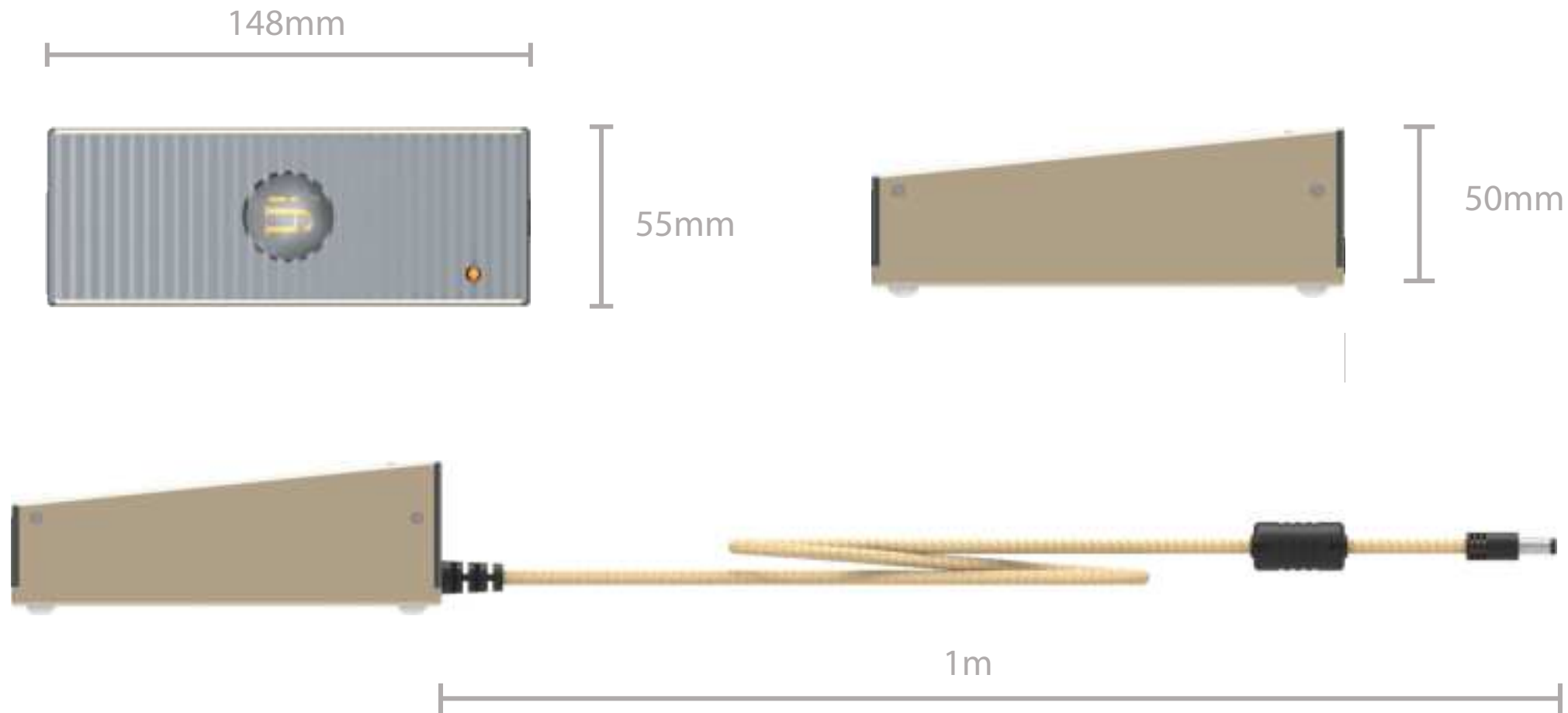




# PARTS AND PERFORMANCE



# MEASURES

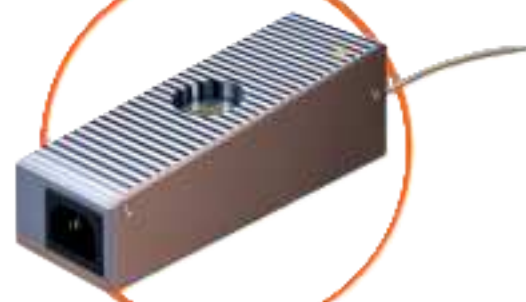
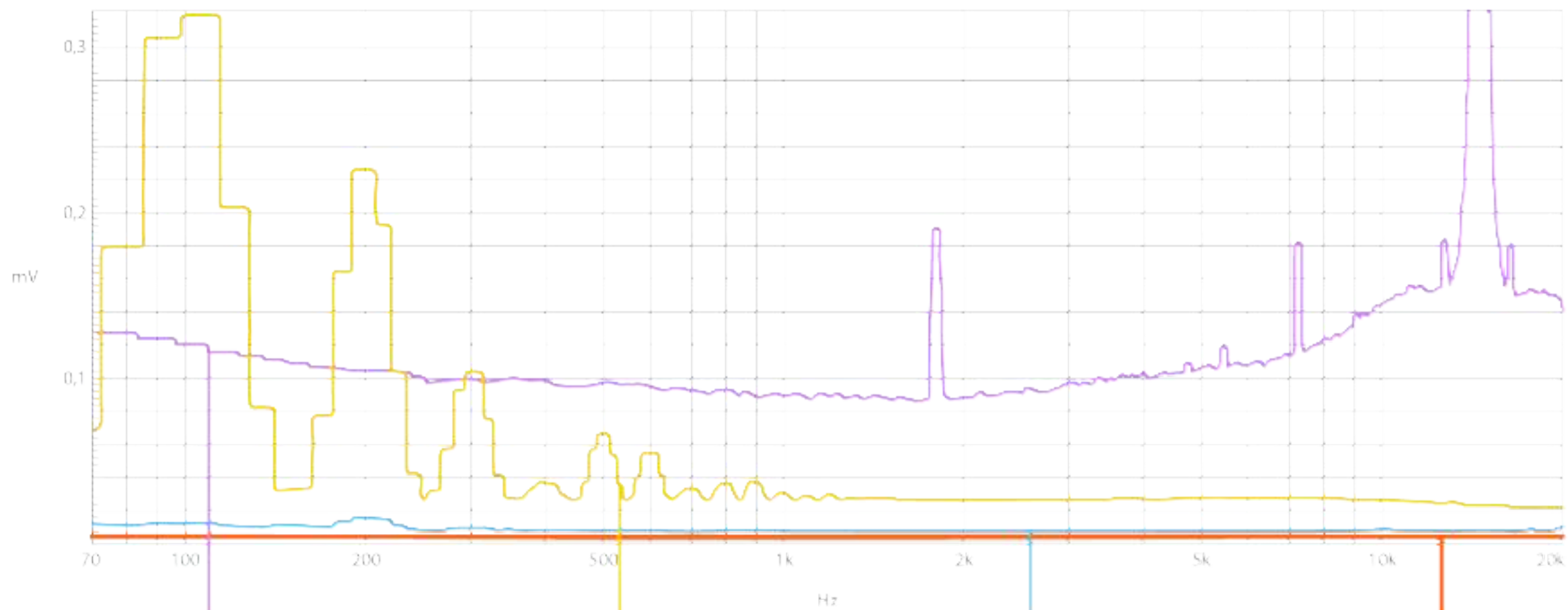


# CIRCUIT PERFORMANCE

Advanced circuits beneath the **<1 $\mu$ V noise floor**:

- Active noise Cancellation II
- Audiophile transformer specially developed for the Elite
- Large aluminium conductive polymer capacitors
- Enlarged input/output capacitance
- 30% extra headroom for instant power delivery for exceptional transients
- Noise-free adaptive multi-mode controller





# AUDIO BAND NOISE FLOOR

<1 $\mu$ V | iFi iPower Elite

100 $\mu$ V | Audiophile Linear Power Supply (LPS)

1000 $\mu$ V | Generic Power Supply

Noise floor is the random noise and excl. AC mains related components and switching freq (<30 $\mu$ V).

**1  $\mu$ V**





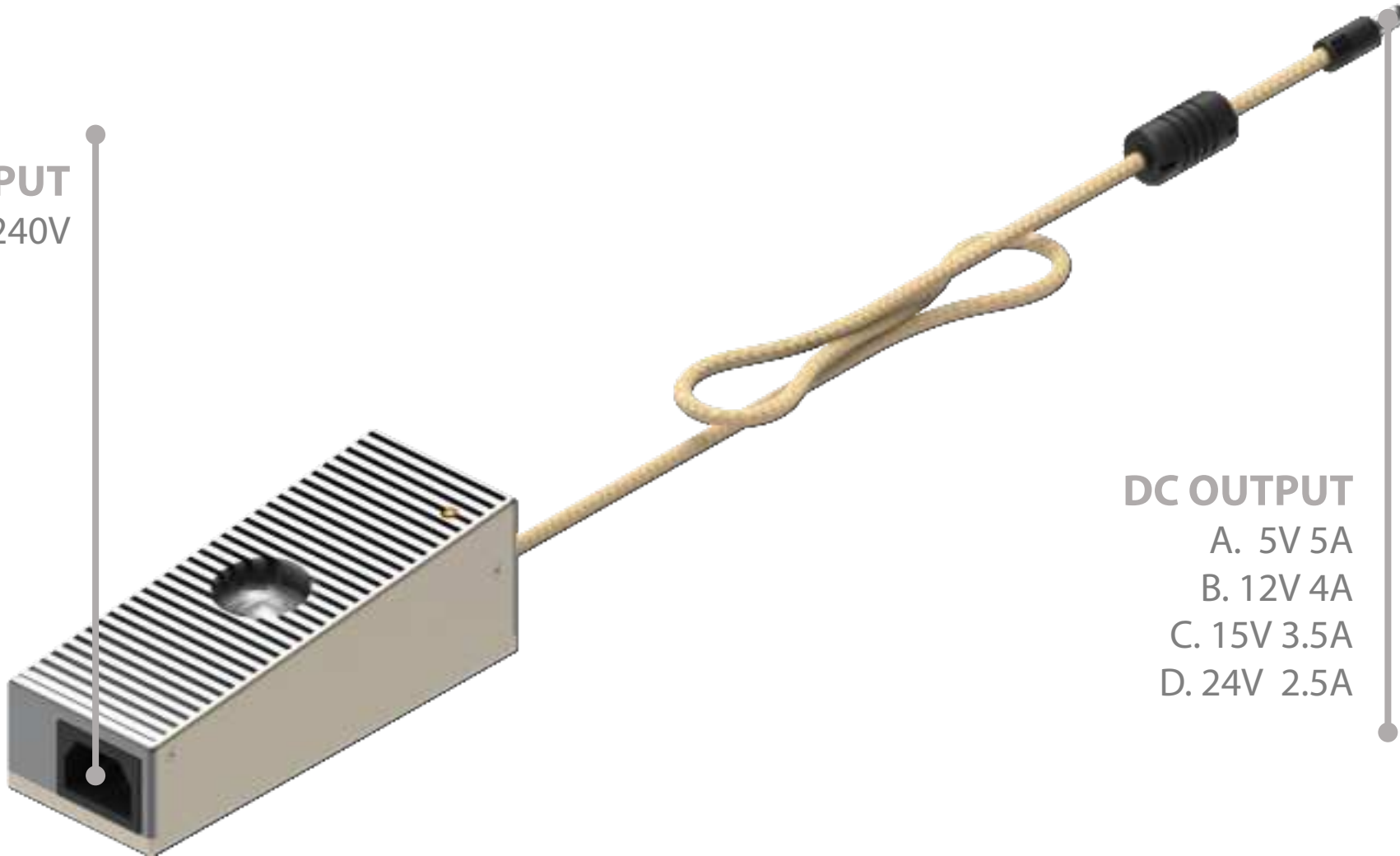
# SPECIFICATIONS

<b>Input</b>	100-240VAC (50-60Hz/1.5A)
<b>Output</b>	5V/5.0A; 12V/4.0A; 15V/3.5A; 24V/2.5A
<b>Output plug</b>	5.5x2.5mm Reverse Polarity Plug (White)
<b>Noise floor</b>	~1uV
<b>Dimensions</b>	148 x 55 x 50 mm / 5.8" x 2.2" x 1.3"
<b>Weight</b>	550 g (1.2 lbs)
<b>Warranty period</b>	12 months

\*Specifications are subject to change without notice

# INPUT / OUTPUT

**AC INPUT**  
100V-240V



**DC OUTPUT**  
A. 5V 5A  
B. 12V 4A  
C. 15V 3.5A  
D. 24V 2.5A



ifi

# ifi warranty

In order to activate the warranty for this iFi product, you must register with the iFi website.

Component:

Serial no:



# Terms and Conditions

iFi guarantees that this iFi product shall be free from defects in materials and workmanship for a period of 1 year (electronic tube warranty for 6 months) for parts and labour.

The warranty period begins at the date of retail sale by an authorized iFi distributor/dealer and is subject to the following requirements and understandings:

- It is the responsibility of the buyer within 30 days from the original sale, to register and activate the product warranty with the iFi website.
- The original invoice must be produced for authentication prior to any warranty claim.
- The iFi product must not have been modified in any manner whatsoever, or the warranty will immediately become void.
- The iFi warranty is only valid in the country of original sale and is not transferable.
- The product must not have been stored in a humid environment; nor subjected to weather, water, or saltwater spray.
- iFi shall not, under any circumstances, be liable for any incidental or consequential damages arising from the loss of property or other damage or losses due to the failure of an iFi product. iFi is not liable for loss of use or inconvenience caused by the failure of an iFi product. iFi is not liable for damage caused to other audio components because of the failure of an iFi product.
- During the warranty period, iFi will repair the product to working order, or, at iFi's discretion, replace the defective module with a similar available product.
- All repairs performed after expiry of the warranty period will be charged to the owner and will carry a 180-day warranty on parts and labour. The customer is responsible for shipping the unit to the iFi distributor in the original packaging. This includes the payment of any shipping charges and related taxes.
- Should any warranty issues arise, iFi's decision is full and final.

# After-Sales

## 3 Easy Steps...



Dear iFi customer: Thank you for purchasing this iFi product.

Please do not hesitate to contact us if you have any questions surrounding our products/support.

<http://support.ifi-audio.com/>

# MQA Setup

( where applicable )

For MQA computer setup, please scan this QR code or type 'ifi audio' into YouTube search.



You will find two setup videos:

- MQA Decoder – eg Pro iDSD
- MQA Renderer – eg nano iDSD BL

Just select the correct video setup for your device.

Any queries, please search the FAQs or open a support ticket here:



[\(https://support.ifi-audio.com/\)](https://support.ifi-audio.com/)

