



WKB-7500CB

Wireless Ergonomic Scissor Switch Keyboard and Mouse Combo



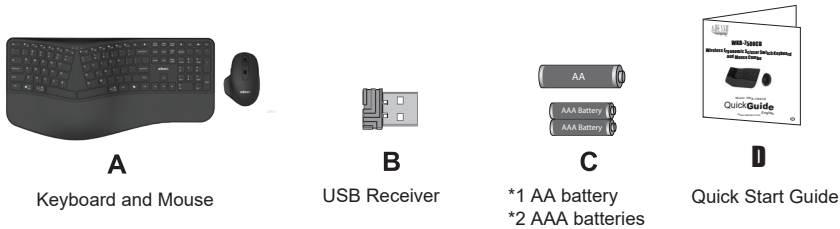
Model: WKB-7500CB

QuickGuide

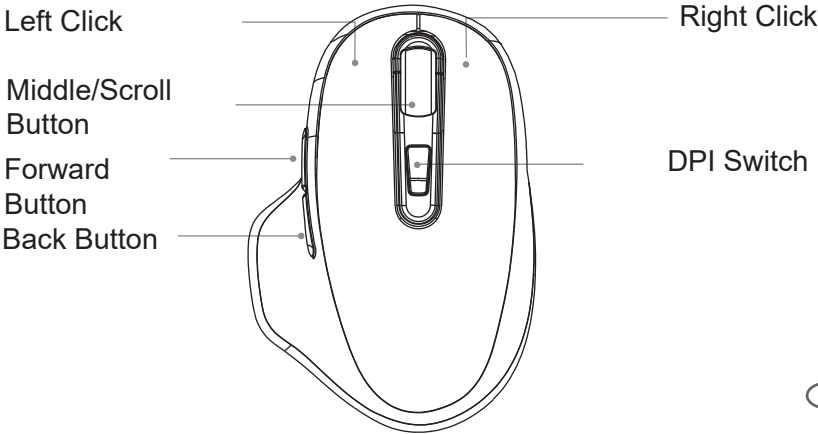
English

www.adesso.com

CONTENTS

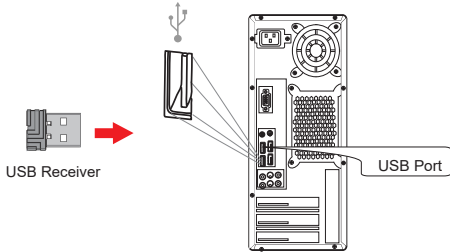


MOUSE DESCRIPTION



INSTALLATION

1. Turn ON your computer and plug in the USB receiver into your computer or device's available USB port. The system will automatically load the USB receivers plug and play feature.



2. Turn ON your keyboard and mouse, it will be ready to use.

LIMITED WARRANTY

Adesso provides a one year limited warranty for all of its products against defects in material and workmanship.

During this period, Adesso will repair or replace any product which proves to be defective. However, Adesso will not warranty any product which has been subject to improper freight handling, shipping abuse, neglect, improper installation or unauthorized repair. The warranty will not cover products installed with components not approved by Adesso and products where the sealed assembly trace has been broken.

If you discover a defect, Adesso will, at its option, repair or replace the product at no charge to you provided you return it during the warranty period with freight charges pre-paid to Adesso. Before returning any product, you must obtain a Return Merchandise Authorization number (RMA). This RMA # must be clearly marked on the outside of the package you are returning for warranty service. Be certain to also include your name, shipping address (no PO Boxes), telephone number, and a copy of the invoice showing proof of purchase in the package.

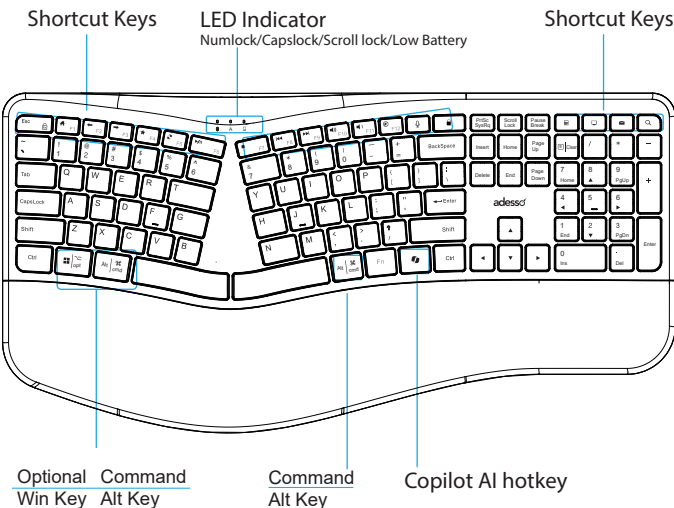
SUPPORT

We have listed most of our FAQ's (Frequently Asked Questions) at: <http://www.adesso.com/faq.php>. Please visit our FAQ Service & Support pages before you contact our E-mail or Telephone Support.

Email Support: If our FAQ's do not help you resolve your issues, please email support@adesso.com.

Telephone Support:
Toll Free: (800) 795-6788
9:00AM to 5:00PM PST Monday - Friday

KEYBOARD DESCRIPTION



Multimedia Hotkeys	
	Launches CoPilot
	Home
	Backward
	Forward
	Favorite
	Refresh
	Play / Pause
	Stop
	Previous Track
	Next Track
	Volume Up
	Volume Down
	Mute
	Microphone
	Lock

INTRODUCTION

This wireless ergonomic keyboard and mouse combo features responsive scissor-switch keys for a comfortable, quiet typing experience and a precision mouse for smooth navigation—perfect for productivity and extended use.

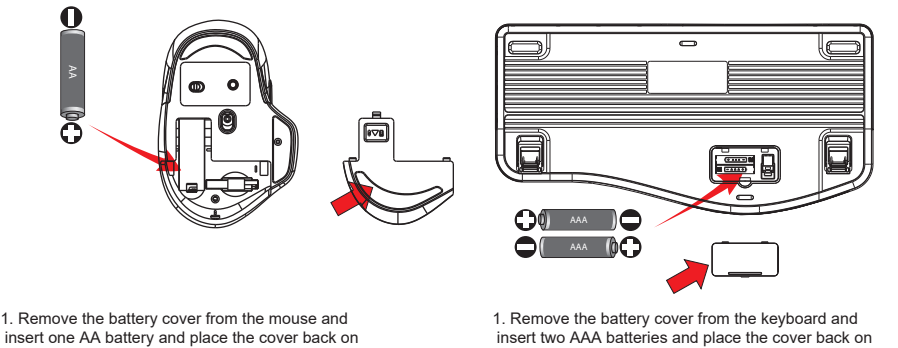
FEATURES

Keyboard Specifications:	
Key Layout:	104-Key US Layout
Connection:	2.4Ghz
Working Range:	30 Feet (10m)
Battery:	AAA*2
Hotkeys	14 hotkeys (Home, Back, Forward, Favorite, Refresh, Play/Pause, Stop, Rewind, Fast forward, Volume +, Volume -, Mute, Microphone, Lock)
Keyboard Dimensions:	18.1" x 9.1" x 1.3" (460 x 232 x3 4mm)
Keyboard Weight:	2.2 lbs (1000g)
Mouse Specifications:	
Tracking Method:	Optical Sensor
Connectivity:	2.4Ghz RF
Range:	30 ft (10m)
DPI Resolution:	3 levels 800/1200/1600
Buttons:	6 buttons (left & right click, back & forward, DPI switch, scroll wheel, middle button)
Hand Orientation:	Right
Battery:	AA battery
Dimensions:	4.7 " x 3.1" x 1.7" (120 x 80 x 42 mm)
Weight:	0.2 lb (80g)

REQUIREMENTS

- Platform: Windows® 7/8/10/11 above Mac os 10.4 and above
- Connectivity Technology: 2.4GHz wireless

Inserting the batteries



Pairing method

- The receiver was paired with keyboard and mouse in advance, below is the pairing method in case it needs re-pairing.
 - Turn ON your available device and plug the USB receiver, Turn ON the keyboard and move it near receiver within 1 foot, press ESC + K, the LED will blinking when pairing and Stop blinking paired.
 - The same setup for the mouse, except press and hold the middle button and the right click button for 5 seconds instead.

TIPS

- When the Battery Low LED is ON, it means that the device requires new batteries
- We suggest to turn “OFF” the devices when leaving your desk for more than an hour to save battery life for longer lasting use.

TROUBLESHOOTING

If the wireless keyboard / mouse won't work, please try the following:

- Make sure the Devices have enough power. Switch the device to ON.
 - Make sure you have connected the USB receiver correctly to the device's USB ports. Move the devices 1 foot away from the receiver in order to avoid interference while pairing.
 - Do the pairing process once more according to the Pairing method on page 6.
- Note:** Wireless phone, routers and other devices that uses 2.4GHz frequency, might cause interference with wireless keyboard and mouse. Please relocate such wireless appliances away from your keyboard and mouse.