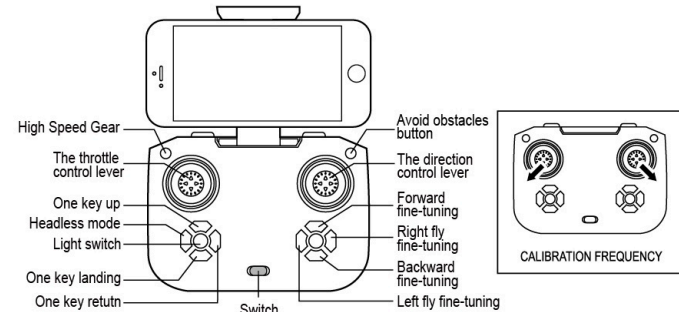
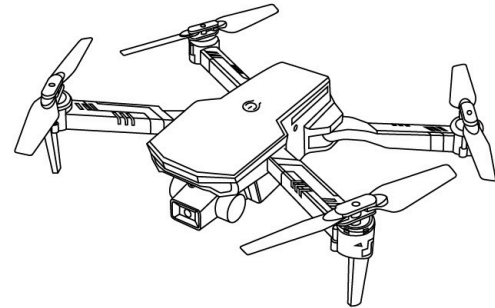


AGES: 14+

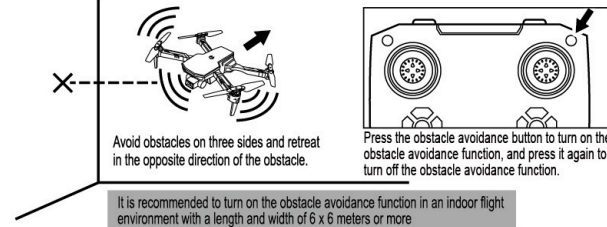
R/C QUADCOPTER

Obstacle avoidance function manual

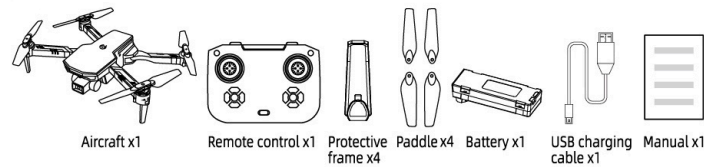


Note: Aircraft before takeoff must first correct the frequency. Aircraft lights flashing when the correction, the correction is completed after the lights lit. In avoidance of uncontrollable, when flying device moves, it always needs to pay attention on the operating level carefully. In the process of operation, the flying device may lose a little power, thus it needs to add power to march. (← the direction of aircraft head)

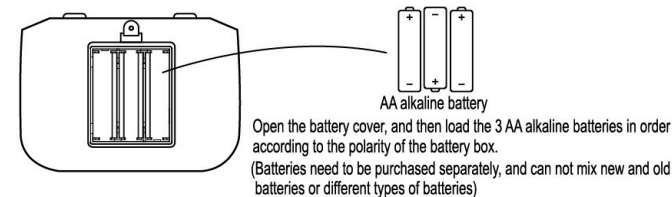
1. OBSTACLE AVOIDANCE FUNCTION



2. PRODUCT PACKAGE CONTENT

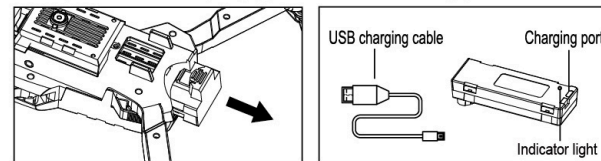


3. REMOTE CONTROL BATTERY INSTALLATION

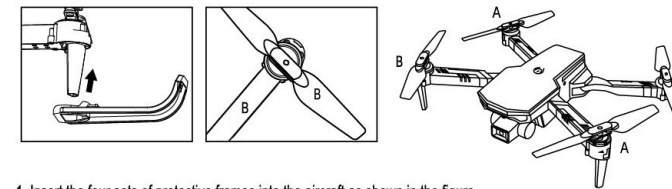


4. CHARGING THE BATTERY OF THE AIRCRAFT

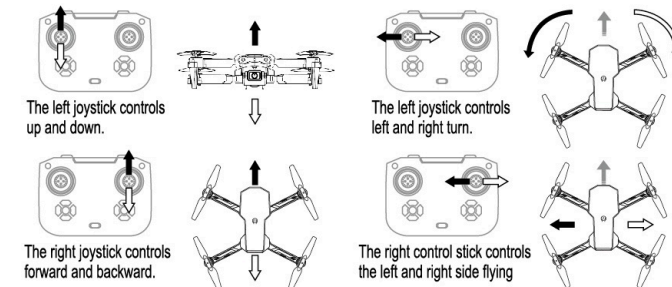
1. Insert USB charger into the USB interface on the computer or other chargers and the plug in, the indicator light will be on.
2. Remove the battery from the aircraft, and then connect the battery plug to the socket on the USB charger for charging.
3. The indicator light will be on in the battery charging process and will be off after charging saturation.



5. INSTALL THE AIRCRAFT PROTECTION FRAME AND BLADES



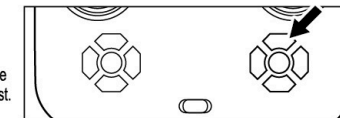
6. AIRCRAFT OPERATION AND CONTROL



7. FINE-TUNING

If the aircraft is flying (turn left/right; forward/backward; left/right) deviation, press the corresponding fine-tuning key in the opposite direction to adjust.

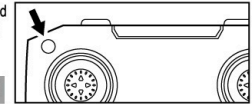
For example, if the aircraft deviates to the rear, press the "forward fine-tuning key" as shown in the figure to adjust.



8. FLIGHT SPEED ADJUSTMENT

This aircraft can switch between 3 speeds: low speed-medium speed-high speed. The power-on defaults to low-speed mode. Press the speed switch button once to change to medium speed mode, press again to switch to high speed mode, and cycle in turn. (The position of the gear shift key is shown in the figure)

Through this button, the sensitivity of the aircraft can be adjusted. The larger the sensitivity value, the faster the aircraft response, and the smaller the value the slower the response.



9. HEADLESS MODE WITH ONE KEY RETURN

That is in flight, no matter what position the aircraft is, no matter what direction it's attitude, as long as you click on the headless mode button, automatic locking direction aircraft take off. When found in aircraft flight has left you very far when you could not tell the direction, then click on the headless mode key, you can not recognize the direction to control the aircraft return; return key or click the auto-off direction of the vehicle will automatically return.

1. Of the code of the aircraft must head toward the front (or) rear headless mode and automatic mode opening direction will return disorder)
2. When you need to use the headless mode, click on the headless mode button, the vehicle will automatically lock the direction of take off.
3. When you do not use the headless mode, then click the headless mode button to exit the headless mode
4. When you want to automatically return, click the button to automatically return the aircraft is in the direction of take off will be automatically refunded.
5. Automatic return process can be controlled manually about the direction of the aircraft, pushing the direction lever forward to exit automatic return function.

Warning: Try to choose less vision and pedestrians at the place with this aircraft, so as to avoid unnecessary losses!

10. TROUBLE SHOOTING DURING FLIGHT

	Situation	Cause	Way to deal
1	Receiver status LED blinks continuously for more than 4s after flight vehicle battery inserted. No response to control input.	Unable to bind to transmitter	Repeat the power up initializing process
2	No response after battery is connected to flight vehicle	1. Power to transmitter and receiver 2. Check transmitter and receiver voltage 3. Re-seat the battery and ensure good contact between battery contacts	1. Turn on transmitter and ensure flight vehicle battery is inserted properly 2. Use fully charged batteries 3. Re-seat the battery and ensure good contact between battery contacts
3	Motor does not respond to throttle stick, receiver LED flashes	Flight vehicle battery depleted	Fully charge the battery, or replace with a fully charged battery
4	Main rotor spins but unable to take off	1. Deformed main blades 2. Flight vehicle battery depleted	1. Replace main blades 2. Charge or replace with fully charged battery
5	Strong vibration of flight vehicle	1. Deformed main blades	1. Replace main blades
6	Tail still off trim after tab adjustment, or inconsistent speed during left/right pirouette	1. Damages tail rotors 2. Damages tail drive motor	1. Replace main blades 2. Replace the main motor
7	Flight vehicle still wanders forward after trim adjustment during hover	Gyroscope midpoint not	The boot will lift fine-tune the normalized neutral point, reboot
8	Flight vehicle still wanders left/right after trim adjustment during hover	1. Motor off 2. Cone loose	1. Replace the motor 2. Installed tight cone

FCC Statement

This device complies with part 15 of the FCC Rules. Operation is subject to the following two conditions: (1) This device may not cause harmful interference, and (2) this device must accept any interference received, including interference that may cause undesired operation.

This equipment has been tested and found to comply with the limits for a Class B digital device, pursuant to part 15 of the FCC Rules. These limits are designed to provide reasonable protection against harmful interference in a residential installation. This equipment generates, uses and can radiate radio frequency energy and, if not installed and used in accordance with the instructions, may cause harmful interference to radio communications. However, there is no guarantee that interference will not occur in a particular installation. If this equipment does cause harmful interference to radio or television reception, which can be determined by turning the equipment off and on, the user is encouraged to try to correct the interference by one or more of the following measures:

- Reorient or relocate the receiving antenna.
- Increase the separation between the equipment and receiver.
- Connect the equipment into an outlet on a circuit different from that to which the receiver is connected.
- Consult the dealer or an experienced radio/TV technician for help.

Caution: Any changes or modifications to this device not explicitly approved by manufacturer could void your authority to operate this equipment.

RF Exposure Information

The device has been evaluated to meet general RF exposure requirement. The device can be used in portable exposure condition without restriction.