



Washing Machine

User manual

WA7*T4****/WA6*T4****/WA8*T4****

Contents

Safety information	3
What you need to know about the safety instructions	3
Important safety symbols	3
Important safety precautions	4
Instructions about the WEEE	12
Installation	13
What's included	13
Installation requirements	14
Step-by-step installation	15
Before you start	22
The basics	22
Smart Check	24
Laundry guidelines	25
Operations	29
Control panel	29
Simple steps to start	30
Auto cycles	31
Manual cycles	32
Special features	33
Maintenance	34
Cleaning	34
Troubleshooting	38
Checkpoints	38
Information codes	42
Specifications	44
Specification sheet	44
Terms of Warranty	46
Warranty not applicable in any of the following cases	46



DC68-04373A-05

SAMSUNG

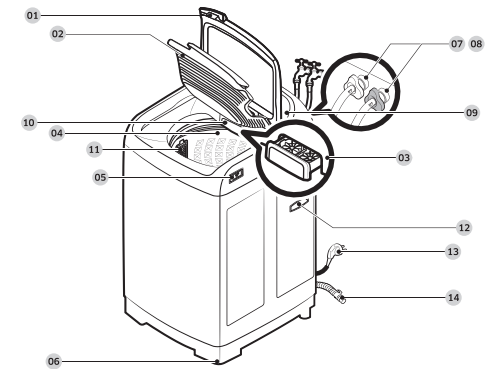
2 English

Installation

Follow these instructions carefully to ensure proper installation of the washing machine and to prevent accidents when doing laundry.

What's included

Make sure all the parts are included in the product package. If you have missing or defective parts, contact a local Samsung customer centre or the retailer.



- | | | |
|----------------------|-----------------------|------------------------|
| 01 Door | 02 Built-in sink * | 03 Wing distributor * |
| 04 Tub | 05 Water Jet * | 06 Levelling feet |
| 07 Water hose (Cold) | 08 Water hose (Hot) * | 09 Control panel |
| 10 Detergent box | 11 Lint filter | 12 Handle (for moving) |
| 13 Power cord | 14 Drain hose | |

NOTE

- Availability of parts with an asterisk (*) depends on the model.
- Door: Make sure to keep the door closed while the washing machine is operating.
- Lint filter: This collects lint that builds up from the laundry being washed.
- Grounding lead: Cover this lead if wired to a metal part for earth-grounding.
- Levelling feet: Adjust the feet to level the washing machine on a flat floor.

Installation requirements

Electrical supply and grounding

WARNING

- AC 220-240 V / 50 Hz fuse or circuit breaker is required.
- Use an individual branch circuit specific to the washing machine.
- Do NOT use an extension cord.
- Use only the power cord that comes with the washing machine.
- Do NOT connect the ground wire to plastic plumbing, gas lines, or hot water pipes.

Levelling

- To prevent tumbling or noise, install the washing machine on a solid, flat floor without a platform or bricks.
- Keep the washing machine at 10 cm from each adjacent wall.

Water supply

- Make sure water taps are easily accessible.
- Turn off the taps when the washing machine is not in use.
- Check for any leaks at the water hose fittings on a regular basis.

Drain

- Make sure the drain hose is not clogged.
- We recommend a standpipe in height of 90-100 cm. The drain hose must be connected through the hose clip to the standpipe, and the standpipe must fully cover the drain hose. The standpipe specifications mentioned here are only applicable to pump-type models.

Before you start

The basics

Prewash (Water Jet & Built-in sink)

CAUTION

- Do not exceed 3 m (*) for the total length of extended hoses.
- Do not let the drain hose run over dorsals that protrude 5 cm (*) or more from the floor.

- Do not run the drain hose under the bottom of the machine.

STEP 5 Power on

Plug the power cord into a wall socket featuring an AC 220-240 V / 50 Hz approved electrical outlet protected by a fuse or circuit breaker. Then, press **POWER** to turn on the washing machine.

NOTE

- If you want to hand-wash while the machine is operating, press **Start/Pause** to stop operation, and then follow steps 1-3 above.
- If you open both the door and the Built-in sink, lower the Built-in sink manually for prewashing.
- For the first-time use, Water Jet supplies water to the detergent box for 1 second to extract air from the water hose. After the first use, Water Jet stops automatically after 5 minutes of water supply.
- Do not use for other than prewashing, such as washing shoes or animals.

Safety information

Congratulations on your new Samsung washing machine. This manual contains important information on the installation, use and care of your appliance. Please take some time to read this manual to take full advantage of your washing machine's many benefits and features.

What you need to know about the safety instructions

Please read this manual thoroughly to ensure that you know how to safely and efficiently operate the extensive features and functions of your new appliance. Please store the manual in a safe location close to the appliance for future reference. Use this appliance only for its intended purpose as described in this instruction manual. Warnings and Important Safety Instructions in this manual do not cover all possible conditions and situations that may occur. It is your responsibility to use common sense, caution and care when installing, maintaining and operating your washing machine. Because the following operating instructions cover various models, the characteristics of your washing machine may differ slightly from those described in this manual and not all warning signs may be applicable. If you have any questions or concerns, contact your nearest service centre or find help and information online at www.samsung.com.

Important safety symbols

What the icons and signs in this user manual mean:

WARNING

Hazards or unsafe practices that may result in severe personal injury, death and/or property damage

CAUTION

Hazards or unsafe practices that may result in personal injury and/or property damage

NOTE

Indicates that a risk of personal injury or material damage exists. These warning signs are here to prevent injury to yourself and others. Please follow them explicitly.

After reading this manual, store it in a safe place for future reference. Read all instructions before using the appliance.

As with any equipment that uses electricity and moving parts, potential hazards exist. To safely operate this appliance, familiarize yourself with its operation and exercise care when using it.

English 3

damaged, and this may result in electric shock or fire.

10. This appliance is intended to be used in household only and it is not intended to be used such as:

- staff kitchen areas in shops, offices and other working environments;
- farm houses;
- by clients in hotels, motels and other residential type environments;
- bed and breakfast type environments;
- areas for communal use in blocks of flats or in launderettes.

English 7

Installation

Step-by-step installation

STEP 1 Select a location

Location requirements:

- Solid, level surface without carpeting or flooring that may obstruct ventilation
- Away from direct sunlight
- Adequate room for ventilation and wiring
- The ambient temperature is always higher than the freezing point (0°C)
- Away from a heat source

Assembling the rat protection panel (applicable models only)

Tilt the washing machine a little, insert the shutter and finally fix the shutter with screw to the base as shown in the picture.

Back Side

1. Insert the rat protection panel to the assembling hole on back side to the end.

2. If you have difficulty inserting the panel lift up the washing machine a little and insert it.

3. Put in one-time amount of detergent evenly so the detergent may not burn over the box.

4. Add fabric softener as recommended by the manufacturer, and then close the cover.

NOTE

If you cannot see the fabric softener compartment, manually rotate the drum clockwise to reveal it.

CAUTION

Make sure to use detergent as appropriate. An excessive amount of detergent may not dissolve well.

- Do not add too much softener. This may reduce the performance.
- Do not leave softener into the softener dispenser for a long time. The softener becomes hardened and may not dissolve well.

English 15

Detergent Box

To add a laundry-specific detergent, follow these steps:

1. Open the door then the Built-in sink to reveal the tub.
2. Open the detergent box by pulling in the direction of the arrow as shown in the figure and then put the detergent in the detergent box.
3. Put in one-time amount of detergent evenly so the detergent may not burn over the box.
4. Add fabric softener as recommended by the manufacturer, and then close the cover.

NOTE

If you cannot see the fabric softener compartment, manually rotate the drum clockwise to reveal it.

CAUTION

Make sure to use detergent as appropriate. An excessive amount of detergent may not dissolve well.

- Do not add too much softener. This may reduce the performance.
- Do not leave softener into the softener dispenser for a long time. The softener becomes hardened and may not dissolve well.

English 23

Safety information

Important safety precautions

WARNING

To reduce the risk of fire, electric shock, or injury to persons when using your appliance, follow basic precautions, including the following:

1. This appliance is not intended for use by persons (including children) with reduced physical, sensory or mental capabilities, or lack of experience and knowledge, unless they have been given supervision or instruction concerning use of the appliance by a person responsible for their safety.
2. For use in Europe: This appliance can be used by children aged from 8 years and above and persons with reduced physical, sensory or mental capabilities or lack of experience

Safety information

Critical installation warnings

WARNING

The installation of this appliance must be performed by a qualified technician or service company.

- Failure to do so may result in electric shock, fire, an explosion, problems with the product, or injury.

Plug the power cord into a wall socket or higher and use the socket for this appliance only. Never use an extension cord.

- Sharing a wall socket with other appliances using a power strip or extending the power cord may result in electric shock or fire.
- Ensure that the power voltage, frequency, and current are the same as those of the product specifications. Failure to do so may result in electric shock or fire. Plug the power plug into the wall socket firmly.

Remove all foreign substances such as dust or water from the power plug terminals and contact points using a dry cloth on a regular basis.

- Unplug the power plug and clean it with a dry cloth.
- Failure to do so may result in electric shock or fire.

Plug the power plug into the wall socket so that the cord is running towards the floor. If you plug the power plug into the socket in the opposite direction, the electric wires within the cable may be damaged and this may result in electric shock or fire.

This appliance must be properly grounded.

- Do not ground the appliance to a gas pipe, plastic water pipe, or telephone line.

- This may result in electric shock, fire, an explosion, or problems with the product.
- Never plug the power cord into a socket that is not grounded correctly and make sure that it is in accordance with local and national regulations.

Do not install this appliance near a heater or any inflammable material. Do not install this appliance in a humid, oily or dusty location, or in a location exposed to direct sunlight or water (rain drops).

English 5

STEP 2 Adjust the levelling feet

Unpack the product package.

1. Gently slide the washing machine into position. Excessive force may damage the levelling feet (A).
2. Level the washing machine by manually adjusting the levelling feet.

3. When levelling is complete, tighten the nuts (B) if provided (some models may not have the nuts).

WARNING

Packaging materials can be dangerous to children. Dispose all packaging material (plastic bags, polystyrene, etc.) out of children's reach.

STEP 3 Connect the water hose

Connect the water hose to the water tap.

1. Remove the adaptor (A) from the water hose (B).

2. While holding down part (D), connect the water hose to the adaptor. Then, release part (D). The hose fits into the adaptor with a clicking sound.

3. Hold the adaptor and turn part (C) in the arrow direction to loosen it by 5 mm (*).

4. Insert the adaptor into the water tap, and tighten the screws while lifting up the adaptor.

5. Turn part (C) in the arrow direction to tighten it.

6. While holding down part (D), connect the water hose to the adaptor. Then, release part (D). The hose fits into the adaptor with a clicking sound.

7. Connect the other end of the water hose to the inlet valve on the back of the washing machine. Turn the hose clockwise to tighten.

8. Open the water tap and check if there are any leaks around the connection areas.

9. If there are water leaks, repeat the steps above.

10. If using a screw type of water tap, connect the water hose to the water tap as shown.

11. Please use the horizontal tap.

12. Make sure to check the care label on the clothing, and sort them accordingly before starting the wash.

13. Empty pockets

14. Empty all the pockets of your laundry items, and remove dirt and/or soils from them.

15. Sort the laundry according to these criteria:

Care Label: Sort the laundry into cottons, mixed fibres, synthetics, silks, wools, and rayon.

Colour: Separate whites from colours.

Size: Mixing different-sized items together in the tub improves the washing performance.

Sensitivity: Follow the cloth-specific instructions on the care label of delicate items such as pure, new woolen items, curtains, and silk items.

NOTE

Make sure to check the care label on the clothing, and sort them accordingly before starting the wash.

STEP 2 Empty pockets

14. Empty all the pockets of your laundry items, and remove dirt and/or soils from them.

15. Sort the laundry according to these criteria:

Care Label: Sort the laundry into cottons, mixed fibres, synthetics, silks, wools, and rayon.

Colour: Separate whites from colours.

Size: Mixing different-sized items together in the tub improves the washing performance.

Sensitivity: Follow the cloth-specific instructions on the care label of delicate items such as pure, new woolen items, curtains, and silk items.

NOTE

Make sure to check the care label on the clothing, and sort them accordingly before starting the wash.

STEP 2 Empty pockets

14. Empty all the pockets of your laundry items, and remove dirt and/or soils from them.

15. Sort the laundry according to these criteria:

Care Label: Sort the laundry into cottons, mixed fibres, synthetics, silks, wools, and rayon.

Colour: Separate whites from colours.

Size: Mixing different-sized items together in the tub improves the washing performance.

Sensitivity: Follow the cloth-specific instructions on the care label of delicate items such as pure, new woolen items, curtains, and silk items.

NOTE

Make sure to check the care label on the clothing, and sort them accordingly before starting the wash.

STEP 2 Empty pockets

14. Empty all the pockets of your laundry items, and remove dirt and/or soils from them.

15. Sort the laundry according to these criteria:

Care Label: Sort the laundry into cottons, mixed fibres, synthetics, silks, wools, and rayon.

Colour: Separate whites from colours.

Size: Mixing different-sized items together in the tub improves the washing performance.

Sensitivity: Follow the cloth-specific instructions on the care label of delicate items such as pure, new woolen items, curtains, and silk items.

NOTE

Make sure to check the care label on the clothing, and sort them accordingly before starting the wash.

STEP 2 Empty pockets

14. Empty all the pockets of your laundry items, and remove dirt and/or soils from them.

15. Sort the laundry according to these criteria:

Care Label: Sort the laundry into cottons, mixed fibres, synthetics, silks, wools, and rayon.

Colour: Separate whites from colours.

Size: Mixing different-sized items together in the tub improves the washing performance.

Sensitivity: Follow the cloth-specific instructions on the care label of delicate items such as pure, new woolen items, curtains, and silk items.

NOTE

Make sure to check the care label on the clothing, and sort them accordingly before starting the wash.

STEP 2 Empty pockets

14. Empty all the pockets of your laundry items, and remove dirt and/or soils from them.

15. Sort the laundry according to these criteria:

Care Label: Sort the laundry into cottons, mixed fibres, synthetics, silks, wools, and rayon.

Colour: Separate whites from colours.

Size: Mixing different-sized items together in the tub improves the washing performance.

Sensitivity: Follow the cloth-specific instructions on the care label of delicate items such as pure, new woolen items, curtains, and silk items.

NOTE

Make sure to check the care label on the clothing, and sort them accordingly before starting the wash.

STEP 2 Empty pockets

14. Empty all the pockets of your laundry items, and remove dirt and/or soils from them.

15. Sort the laundry according to these criteria:

Care Label: Sort the laundry into cottons, mixed fibres, synthetics, silks, wools, and rayon.

Colour: Separate whites from colours.

Size: Mixing different-sized items together in the tub improves the washing performance.

Sensitivity: Follow the cloth-specific instructions on the care label of delicate items such as pure, new woolen items, curtains, and silk items.

NOTE

Make sure to check the care label on the clothing, and sort them accordingly before starting the wash.

STEP 2 Empty pockets

14. Empty all the pockets of your laundry items, and remove dirt and/or soils from them.

15. Sort the laundry according to these criteria:

Care Label: Sort the laundry into cottons, mixed fibres, synthetics, silks, wools, and rayon.

Colour: Separate whites from colours.

Size: Mixing different-sized items together in the tub improves the washing performance.

Sensitivity: Follow the cloth-specific instructions on the care label of delicate items such as pure, new woolen items, curtains, and silk items.

NOTE

Make sure to check the care label on the clothing, and sort them accordingly before starting the wash.

STEP 2 Empty pockets

14. Empty all the pockets of your laundry items, and remove dirt and/or soils from them.

15. Sort the laundry according to these criteria:

Care Label: Sort the laundry into cottons, mixed fibres, synthetics, silks, wools, and rayon.

Colour: Separate whites from colours.

Size: Mixing different-sized items together in the tub improves the washing performance.

Sensitivity: Follow the cloth-specific instructions on the care label of delicate items such as pure, new woolen items, curtains, and silk items.

NOTE

Make sure to check the care label on the clothing, and sort them accordingly before starting the wash.

STEP 2 Empty pockets

14. Empty all the pockets of your laundry items, and remove dirt and/or soils from them.

15. Sort the laundry according to these criteria:

Care Label: Sort the laundry into cottons, mixed fibres, synthetics, silks, wools, and rayon.

Colour: Separate whites from colours.

Size: Mixing different-sized items together in the tub improves the washing performance.

Sensitivity: Follow the cloth-specific instructions on the care label of delicate items such as pure, new woolen items, curtains, and silk items.

NOTE

Make sure to check the care label on the clothing, and sort them accordingly before starting the wash.

STEP 2 Empty pockets

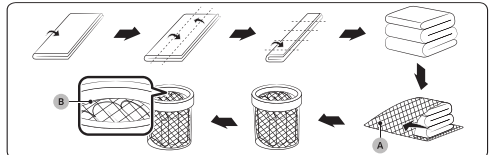
Before you start

CAUTION

- For inflatable items such as blankets, microfibre quilts, and waterproof materials, use the laundry net to fully soak the laundry in water.
- Inflatable items may cause damage to the laundry or the machine during the wash or drying process.
- Regardless of the size, blankets or quilts are safer and cleaner to wash one item at a time. Two different-sized blankets in the same load may compromise the drying performance due to unbalanced loads.

To input a blanket

Fold the blanket into the **blanket-specific net (A)** as shown, and then insert the net in the tub below the **plastic area (B)** of the tub.



STEP 4 Prewash (if necessary)

- To remove stains and dirt on collars, sleeves, hems, and pockets, apply detergent lightly and brush off.
- Use powder or liquid detergents. Do not use soap, as this may remain on the tub after washing.
- Prewash white socks, sleeves, and collars with a little detergent and a brush.

CAUTION

- Make sure the laundry is inserted completely.
- Any exposed part of the laundry may cause damage to the machine or the laundry itself, or a water leak may occur, and the hardness of the water in your local area. If you are not sure about the water hardness, contact a local water authority.
- Do not overload the tub. Make sure no part of the laundry is exposed outside of the tub.

STEP 5 Determine the load capacity

Do not overload the washing machine. Overloading may cause the washing machine not to wash properly.

- NOTE**
 - When washing bedding or bedding covers, the wash time may be lengthened or the spin efficiency may be reduced. For bedding or bedding covers, the recommended load capacity is 3.0 kg or less.

CAUTION
If the laundry is unbalanced and the **Ub** information code is displayed, redistribute the load. Unbalanced laundry may reduce the spinning performance.

STEP 6 Apply a proper detergent type
The type of detergent depends on the type of fabric (cotton, synthetic, delicate items, wool), colour, wash temperature, and degree of soiling. Always use "low suds" laundry detergent, which is designed for automatic washing machines.

CAUTION

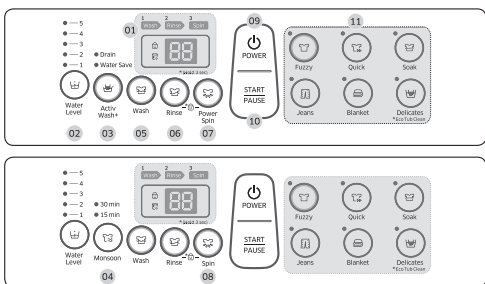
- Use an appropriate amount of detergent. Excess amounts of detergent do not produce much improvement in washing results but cause damage to the laundry due to deteriorated rinsing performance.
- Bleach is strong alkali in nature, causing damage to or discoloration of the laundry.
- Use a longer or added rinse cycle when using powder detergent that is very likely to remain on the laundry and cause bad odours after washing is complete.
- If an excessive amount of detergent is used especially in cold water, the detergent doesn't dissolve well, ending up with contaminated laundry, hoses, and/or tub.
- In case of timed washing, do not apply detergent directly to laundry or the tub. The laundry may be discoloured. Use the detergent box.
- When washing wool using the Wool cycle, use only a neutral detergent to avoid discoloring the laundry.

NOTE

- Follow the detergent manufacturer's recommendations based on the weight of the laundry, the degree of soiling, and the hardness of the water in your local area. If you are not sure about the water hardness, contact a local water authority.
- Do not use detergent that tends to be hardened or solidified. This detergent may remain after the rinse process, blocking the drain outlet.

Operations

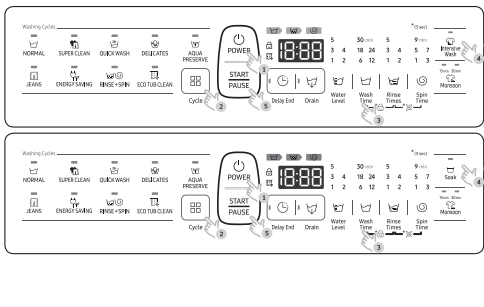
Control panel



01 Cycle	Press to select a desired cycle. The selected cycle's indicator will light up.
02 POWER 03 START/PAUSE	Power on or off the washing machine. Select a cycle and press START/PAUSE to start the cycle. To stop the current operation, press START/PAUSE .
04 Display	Displays the current cycle information and estimated time remaining, or an information code if the washing machine needs to be checked.
05 Delay End	Delay the end of any cycle for up to 24 hours in one-hour increments. The displayed hour indicates the time the cycle will end.
06 Drain	When draining is complete, the washing machine turns off automatically. The Drain button is enabled only in Standby state. When draining is in process, the START/PAUSE button will be disabled. The water level is adjusted according to the cycle. However, you can change the level manually.
07 Water Level	Press to run a wash-only cycle, or to select a washing time between 6 minutes and 30 minutes. To run a wash-only cycle, press and hold this button for 3 seconds.
08 Wash Time	

09 Rinse Times	Press to run a rinse-only, or change the rinse count up to 5. To run a rinse-only cycle, press and hold this button for 3 seconds.
10 Spin Time	Press to run a spin-only cycle, or to select a desired spin time. To run a spin-only cycle, press and hold this button for 3 seconds.
11 Intervel Wash	Press this button when the laundry is heavily soiled and needs to be washed intensively. The cycle time will be increased by 1 minute.
Soak	With this selected, the washing machine adds a soaking process in advance of the main cycle.
12 Monsoon	Use this option to speed up the drying process. Press the button to cycle through the times: 15 min > 30 min.

Simple steps to start



Operations

- Press **POWER** to turn on the washing machine.
- Press **Cycle** to select the desired cycle.
- Change the cycle settings (Water Level, Wash Time, Rinse Times, and/or Spin Time) as necessary.
- Add an option such as **Intensive Wash, Soak, and Monsoon**, press the corresponding button.
- Press **START/PAUSE**.

To change the cycle during operation

- Press **START/PAUSE** to stop operation.
- Select a different cycle, and repeat steps 2-4 above if necessary.
- Press **START/PAUSE** again to start the new cycle.

Auto cycles

Cycle	Description
NORMAL	For most fabrics including cottons, linens, and normally soiled items.
SUPER CLEAN	Select this if you want to produce powerful cleaning performance.
QUICK WASH	Select this for less soiled clothes, such as towels, in reduced time.
DELICATES	Select this for delicate items such as sweaters, cardigans, or wool clothes.
JEANS	Suitable for clothes that require a thorough wash.
ENERGY SAVING	Use this course to save energy.
RINSE+SPIN	For loads that need rinsing only or to add rinse-aided fabric softener to.
ECO TUB CLEAN	Select this to clean the tub. The powerful spinning force removes impurities and bad odours from inside the tub. A blinking Ud indicator reminds you that it is time to clean the tub using Eco Tub Clean. For details, see the Cleaning section in this manual.
AQUA PRESERVE	Use this if you want to save the water to use. The water used in the rinse process will be reused for the next process.

Operations

Special features

Child Lock

Child Lock is designed to prevent accidents by children or infants, such as drowning in the tub.

To activate the Child Lock
Press and hold **Wash Time** and **Rinse Times** simultaneously for 3 seconds. The **Ud** indicator blinks.

To deactivate the Child Lock
Press and hold **Wash Time** and **Rinse Times** simultaneously for 3 seconds. The **Ud** indicator blinks off. If the tub has contained water, simply restart the machine and press and hold **Wash Time** and **Rinse Times** simultaneously for 3 seconds to deactivate the Child Lock.

With the Child Lock enabled

- You can still manipulate on the control panel while the door is closed. If you open the door, an information code (**CL**, **Ud**) appears with an alarm. Then, the machine starts forced draining after 30 seconds in order to prevent accidents.
- If the door is left open for 30 seconds with the tub containing water, the machine drains the water with the **CL** code, which you cannot stop.
- To add detergent or more laundry in the tub, or to change the cycle settings, you must first deactivate the Child Lock.

Delay End

You can set the washing machine to finish a cycle later. The hour displayed indicates the time the wash will finish.

- Select a cycle. Then, change the cycle settings if necessary.
- Press **Delay End** repeatedly until a desired end time is set.
- Press **START/PAUSE**. The lamp indicator next to the **Delay End** button turns on, and the timer starts.
- To cancel **Delay End**, restart the washing machine by pressing **POWER**. Real-life case

You want to finish a two-hour cycle 3 hours from now. To do this, add the **Delay End** option to the current cycle settings, and then press **START/PAUSE** at 2:00 p.m. The washing machine starts operating at 3:00 p.m. and ends at 5:00 p.m. Provided below is the timeline for this example.

2:00 pm	Set the Delay End to 3 hours
3:00 pm	Start
5:00 pm	End

Maintenance

Cleaning

Keep the washing machine clean to prevent deteriorated performance and to preserve its life cycle.

Exterior

- Clean the control panel with a soft, damp cloth. Do not use abrasive powders or cleaning pads. Do not spray cleaners directly on the panels.

Eco Tub Clean

Regularly run this cycle to clean the tub and to remove bacteria from it.

- Makes sure the tub is completely empty.
- Press **POWER** to turn on the washing machine.
- Press **Cycle** to select **ECO TUB CLEAN**. You can also use **Delay End** with Eco Tub Clean.
- Press **START/PAUSE**.

CAUTION

Only run Eco Tub Clean when the tub is completely empty. This may cause damage to the laundry or a problem with the washing machine.

ECO TUB CLEAN reminder

- The **Ud** indicator reminds you of cleaning the tub when necessary. If you happen to see the indicator blinking after washing is complete, remove the laundry and run the Eco Tub Clean cycle.
- You can ignore this reminder and continue to run cycles normally because this is not a system failure. However, the reminder remains active for 6 consecutive cycles immediately after each cycle is complete.
- The reminder is activated once every 1-3 months, depending on the cycle count.
- To keep the tub clean, it is recommended to run Eco Tub Clean on a regular basis.

Built-in sink

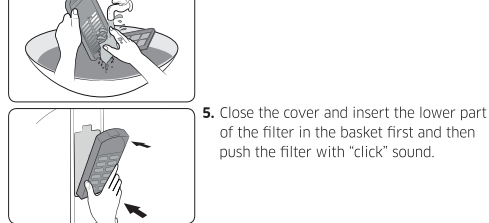
- Open the door, and use a cloth or sponge to clean the Built-in sink.
- Press the **Water Jet** button to supply water to the board. Use this water to rinse the board.

Maintenance

Cleaning the lint filter

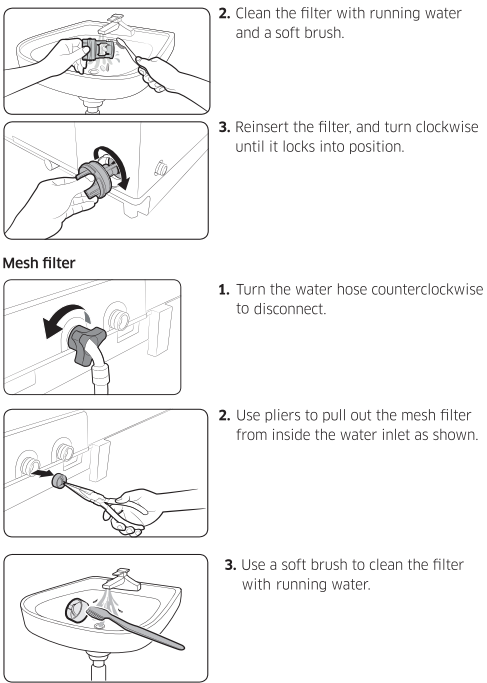
Clean the filter net often to keep the washing machine clean.

- Push the upper part of the filter and pull in.
- Open the cover as shown in the figure.
- Remove the lint from the filter.
- Clean the filter.

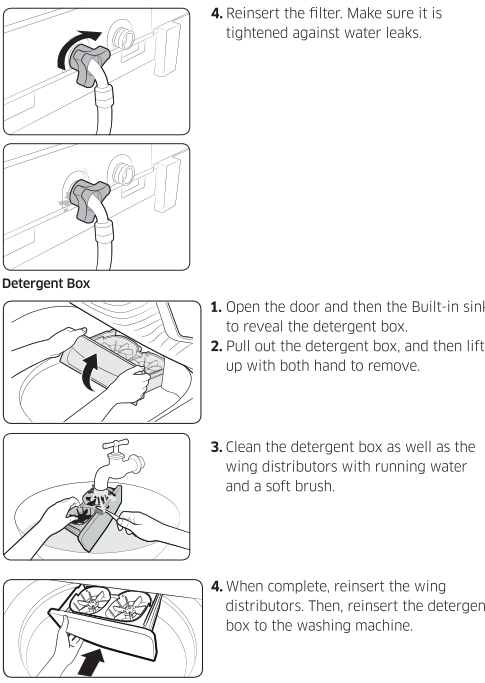


Pump filter (applicable models only)

- Put a floor-cloth or towel under the Pump filter. Turn the filter knob anticlockwise to remove.



Maintenance



Troubleshooting

Checkpoints

If you encounter an issue to check with the washing machine, first check the table below and try the suggestions.

Symptom	Action
Does not turn on.	<ul style="list-style-type: none">Make sure you use rated power for the product.Make sure the power cord is completely plugged in.Check the fuse or reset the circuit breaker.Make sure the door is closed.Make sure the water taps are open.Make sure to press or tap Start/Pause to start the washing machine.Make sure Child Lock is not activated.Before the washing machine starts to fill, it will make a series of clicking noises to check the door lock and does a quick drain.Was the door opened during the spinning cycle? Close the door, and press or tap Start/Pause to resume.The machine enters Standby or is in a soaking cycle. Please wait.Check the fuse or reset the circuit breaker.
Does not start.	<ul style="list-style-type: none">Make sure you press or tap Start/Pause after selecting the water supply.Make sure the water taps are open.Is the filter net at the water supply hose connector clogged? Clean the filter net by brushing with a toothbrush.Is the water supply cut off? If the water supply is cut off, close the tap and power off.Straighten the water supply hoses.Open and close the door, then press or tap Start/Pause.If the water pressure is low, it takes longer to start washing.If the water level is not as high as necessary or lower than expected, use the level selector to adjust the water level.
Water is not supplied.	<ul style="list-style-type: none">Plug the power cord into a live electrical outlet.Check the fuse or reset the circuit breaker.Close the door, and press or tap Start/Pause to start the washing machine. For your safety, the washing machine will not spin unless the door is closed.Before the washing machine starts to fill, it will make a series of clicking noises to check the door lock and does a quick drain.There may be a pause or soak period in the cycle. Wait briefly and the washing machine may start.Make sure the inlet hose screens at the taps are not clogged. Periodically clean the screens.This symptom occurs temporarily due to low voltages, and will be solved when power recovers.

Symptom	Action
After a cycle, detergent remains in the automatic dispenser.	<ul style="list-style-type: none">Make sure the washing machine is running with sufficient water pressure.Make sure the detergent box is properly inserted.Remove and clean the detergent box, and then try again.
Vibrates excessively or makes noise.	<ul style="list-style-type: none">Fully open both water taps.Make sure the washing machine is set on a level floor. If the floor is not level, use the leveling feet to adjust the washing machine.Make sure the washing machine is not contacting any other object.Make sure the laundry load is balanced.Make sure the laundry is spread evenly in the washing machine. Spread out the laundry evenly and start again.Make sure the space around the washing machine is free of objects.Humming is produced normally during operation.Objects such as coins can cause noise. Remove these objects from the washing machine after washing is complete.
Stops.	<ul style="list-style-type: none">Plug the power cord into a live electrical outlet.Check the fuse or reset the circuit breaker.Close the door, and press or tap Start/Pause to start the washing machine. For your safety, the washing machine will not spin unless the door is closed.Before the washing machine starts to fill, it will make a series of clicking noises to check the door lock and does a quick drain.There may be a pause or soak period in the cycle. Wait briefly and the washing machine may start.Make sure the inlet hose screens at the taps are not clogged. Periodically clean the screens.This symptom occurs temporarily due to low voltages, and will be solved when power recovers.

Symptom	Action
The Eco Tub Clean alarm does not turn off.	<ul style="list-style-type: none">When the machine is diagnosed to be cleaned, the Ud indicator blinks for an hour. This recurs 6 consecutive times until you run the Eco Tub Clean cycle. This is normal, and not a system failure. To keep the tub clean, it is recommended to run the cycle once every 1-3 months.
Fills with the wrong temperature water.	<ul style="list-style-type: none">Fully open both water taps.Make sure the temperature selection is correct.Make sure the hoses are connected to the correct water taps. Flush water lines.Disconnect the hoses and clean the screens. The hose filter screens may be clogged.While the washing machine fills, the water temperature may change as the automatic temperature control feature checks incoming water temperature. This is normal.While the washing machine fills, you may notice just hot and/or just cold water going through the dispenser when cold or warm temperatures are selected. This is a normal function of the automatic temperature control feature as the washing machine determines the water temperature.
Door (Lid) locked or will not open.	<ul style="list-style-type: none">While the washing machine is operating, press or tap Start/Pause to stop the washing machine.It may take a few moments for the door lock mechanism to disengage.Check the fuse or reset the circuit breaker.Make sure the electrical voltage is normal.Make sure the washing machine is plugged in.Make sure the drain hose is pointed downward.Make sure the drain hose is not clogged.Make sure the drain hose is not kinked.Straighten the drain hose. If there is a drain restriction, call for service.Close the door, and press or tap Start/Pause. For your safety, the washing machine will not spin unless the door is closed.
Does not drain and/or spin.	<ul style="list-style-type: none">Use warm water to disconnect the water supply hose and drain hose. Soak them in warm water.Fill the spin basket with warm water, and then wait for about 10 minutes.Put a hot towel on the drain hose connector.Reconnect the water supply hose and drain hose, and check if water is supplied properly.Make sure the drain hose is not clogged, and is hung over the drain hose hook. Fill the spin basket halfway with water, and try spinning again.Upright the end of the drain hose to prevent water from draining. Fill the spin basket halfway with water, and then run spinning after releasing the drain hose.

Symptom	Action
Load is wet at the end of the cycle.	<ul style="list-style-type: none">Use the High or Extra High spin speed. (Applicable model only)Use high efficiency (HE) detergent to reduce oversudsing.Load is too small. Small loads (one or two items) may become unbalanced and not spin completely.
Leaks water.	<ul style="list-style-type: none">Make sure all hose connections are tight.Make sure the water supply hoses' rubber packing is in the correct position. Screw tightly again.Make sure the end of the drain hose is correctly inserted and secured to the drain system.Avoid overloading.Use high efficiency (HE) detergent to prevent oversudsing.Make sure the water supply hose is not kinked.If the water supply is too strong, water may leak. Close the water tap a little.Make sure water is not leaking from the water tap. If so, repair the water tap.
Excessive suds.	<ul style="list-style-type: none">Use high efficiency (HE) detergent to prevent oversudsing.Reduce the detergent amount for soft water, small loads, or lightly soiled loads.Non-HE detergent is not recommended.
The spin basket or drain/supply hose is frozen.	<ul style="list-style-type: none">Use warm water to disconnect the water supply hose and drain hose. Soak them in warm water.Fill the spin basket with warm water, and then wait for about 10 minutes.Put a hot towel on the drain hose connector.Reconnect the water supply hose and drain hose, and check if water is supplied properly.
Water drains out immediately.	<ul style="list-style-type: none">Make sure the laundry is spread out evenly in the tub.Water overflows.Run the spinning process to drain water, and restart the machine.If the information code continues to appear, call for service.

Symptom	Action
Water drains out immediately.	<ul style="list-style-type: none">Make sure the drain hose is installed correctly.See the installation section of this user manual and adjust the position of the drain hose as instructed.
Stains on clothes.	<ul style="list-style-type: none">Clean the magic filter.
Has odours.	<ul style="list-style-type: none">Excessive suds collect in recesses and can cause foul odours.Run cleaning cycles to sanitize periodically.Dry the washing machine interior after a cycle has finished.

a symptom continues to happen, contact a local Samsung service centre.

Information codes

If the washing machine fails to operate, you may see an information code on the display. Check the table below and try the suggestions.

Code	Action
Water does not drain.	<ul style="list-style-type: none">Make sure the drain hose is not bent, frozen, or clogged.If the water does not drain in 30 minutes, an alarm will sound with the information code of 5C on the display.
Water is not supplied.	<ul style="list-style-type: none">Make sure the water tap is opened.Make sure the water hose is not bent, frozen, or clogged.If the water supply is not finished in 1 hour or the water level does not change in 4-12 minutes after the water supply has started, an alarm will sound with the information code of 4C on the display.
The spinning process does not operate.	<ul style="list-style-type: none">Make sure the laundry is spread out evenly in the tub.Make sure the washing machine is levelled on a flat surface.
Water overflows.	<ul style="list-style-type: none">Run the spinning process to drain water, and restart the machine.If the information code continues to appear, call for service.

Troubleshooting

CL, dC	Child Lock is activated unexpectedly. <ul style="list-style-type: none">While the information code blinks at a 0.5 second intervals, water drains with an alarm.To clear the information code, close the door when draining is complete, and then restart the washing machine by pressing the START/PAUSE button.
LC	<ul style="list-style-type: none">Check if the end of the drain hose is placed on the floor. (The hose should be hung over the pump + hose guide.)Check if the drain hose is clogged by any foreign substances.If the error remains, call the customer care.
8C	Check the MEMS sensor. <ul style="list-style-type: none">Power the washer off. Wait 2-3 minutes, power the washer on, and then try again.If the problem continues, call for service.
9C1	The electronic control needs to be checked (Over Voltage Error). <ul style="list-style-type: none">Check if power is supplied properly.Turn off the washer, unplug it, wait one minute, and then plug the washer in again. If the information code remains, contact a Samsung customer service center.
9C2	Low voltage detected. <ul style="list-style-type: none">Check if the power cord is plugged in.Turn off the washer, unplug it, wait one minute, and then plug the washer in again. If the information code remains, contact a Samsung customer service center.

If any information code keeps appearing on the screen, contact a local Samsung service centre.

Specifications

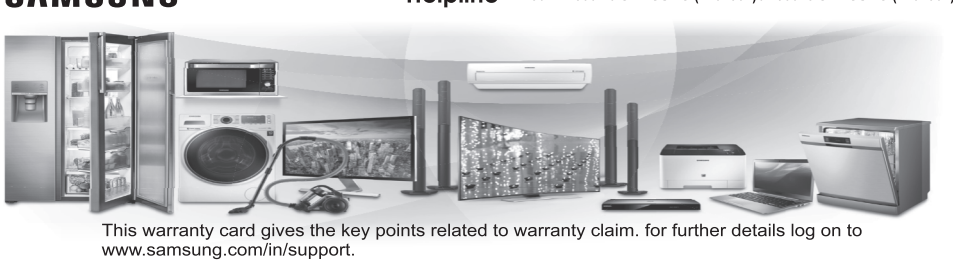
Specification sheet

Type	Top loading washing machine
Max load (kg)	WAS7045*** 6 WAS7145*** WAS7142*** 5
Power consumption (W)	AC 220-240 V / 50 Hz 200-250 W
Dimensions (mm)	W540 x D568 x H915
Net weight (kg)	29.8 0.78 (0.5 - 8.0)
Water pressure (Mpa kg/cm ²)	0.05 - 0.78 (0.5 - 8.0)
Washing type	Stirring type
Water level (L)	5 62 3 49 2 40 1 33
Water usage (L)	120 100 80 60
Spin speed (rpm)	700
Type	Top loading washing machine
Max load (kg)	WA70145*** 7 WA70142*** 5
Power consumption (W)	AC 220-240 V / 50 Hz 200-250 W
Dimensions (mm)	W540 x D568 x H915
Net weight (kg)	29.8 0.78 (0.5 - 8.0)
Water pressure (Mpa kg/cm ²)	0.05 - 0.78 (0.5 - 8.0)
Washing type	Stirring type
Water level (L)	5 62 3 49 2 40 1 33
Water usage (L)	120 100 80 60
Spin speed (rpm)	700

NOTE (Only Applicable to India)

- Asterisk (*) means variant model and can be varied (D-9) or (A-Z).
- The design and specifications are subject to change without notice for quality improvement purposes.
- The energy label specifications have been determined by using following program according to IEC 60456:
 - The program is:
 - WA80145*** Energy saving course, Water Level 5
 - WA70145*** Energy saving course, Water Level 5
 - WA70142*** Energy saving course, Water Level 5
 - WA70145*** Energy saving course, Water Level 5
 - WA70142*** Energy saving course, Water Level 5

SAMSUNG Helpline - Call : 1800 40 SAMSUNG (7267864) / 1800 5 SAMSUNG (7267864)



This warranty card gives the key points related to warranty claim, for further details log on to www.samsung.com/in/support.

Warranty Card (Only Applicable to India)

- Proof of purchase is a pre-requisite to claim warranty.
- The product should have been purchased from an authorised Samsung Sales Dealer in India.
- Warranty can be claimed only if the repair was carried out by the Samsung authorised service center.
- Carry-in service or In-Home service applicability depends on the product category and Samsung policy.
- Free installation or demo of the product, if applicable, can be availed only once and within 6 months from the date of purchase. In case of free installation, any additional material required over and above the standard installation kit shall be on the chargeable basis.
- In case of defective accessory, only the accessory will be repaired or replaced.
- Cosmetic/Aesthetic / Plastic / Glass Parts / Bulbs / Cable / Wiring / Piping / Consumables are not covered under warranty.
- The defective parts/ products which were replaced by Samsung under this warranty shall be the property of Samsung.
- While carrying out repair, Samsung may use accessories or parts that are new or refurbished or reconditioned.
- Samsung shall not be liable for any losses or consequential losses due to product failure or the installed software.
- Samsung shall be free to decide on whether or not to provide a software update for its products.
- Samsung shall not be responsible for any loss or misuse of data, personal information, setting, third party software during product usage or repair or software update.
- Samsung shall not be liable for any loss, cost, expense, inconvenience or damage that may result from use inability to use the product. Under no circumstances shall Samsung be liable for any loss, cost, expense, inconvenience or damage exceeding the purchase price of the product.
- Defects caused by customer negligence, tampering shall void the product warranty.
- Any extended/addition warranty offered by Samsung has to be supported by relevant proofs.
- Usage of power stabilizers of proper rating is necessary unless explicitly mentioned by Samsung on product literature/instruction booklet.
- In case of defect arising out of installation done by party other than Samsung authorised party, the limited warranty will be applicable as per revised T&C as Samsung shall deem fit.
- Regular upkeep, maintenance and cleaning of parts are necessary in certain products. Such periodic maintenance shall be on chargeable basis unless otherwise provided and not covered under warranty.
- In the event of any unforeseen circumstances, and spares not being available Samsung's prevailing depreciation rules will be binding on the purchaser and same shall be considered as a commercial solution in lieu of repairs.
- Defects arising out of the following are not covered under warranty like Mishandling/Misuse, Improper ventilation, Improper voltage, Use of external material, Normal wear and tear, Physical Damage and / or electrical damage caused by physical impact.
- Complaints related to playability, printability, compatibility with external accessories, software, file systems, third party applications, CODEs, signals, Networks & ISP bandwidth shall not be considered as defect in product and not covered under warranty.
- This warranty covers only the defects in products arising out of manufacturing or faulty workmanship.
- This warranty covers repair/replacement of parts.
- Warranty period of parts & accessories may vary from product to product.
- Maximum liability out of this warranty is limited to the product purchase value/MRP.
- No warranty on certain parts/conditions/types of product failures.
- Under certain conditions where warranty obligations cannot be met, depreciation will be applicable on the existing product.

CUSTOMER DETAILS/CUSTOM WARRANTY CARD	
Model No.:	Customer copy (to be retained by customer):
Product Serial No.:	Date of Purchase: _____
Name:	
Address in Full:	
Telephone No.:	Model No: _____
Dealer Name & Address:	
Customer's Signature & Date (I accept the Terms & Conditions of warranty)	Dealer's Signature with rubber stamp

For warranty conditions refer warranty card.

(Only Applicable to India)

- The Warranty shall be null and void in any of the following cases, and in such cases Samsung may at its sole discretion repair its equipment on a chargeable basis. The decision of Samsung, whether a complaint falls in any of these categories or not shall be binding on the Purchaser.**
- The duly filled warranty card/proof of purchase is not presented to the service engineer at the time of repairs being undertaken / requested.
 - The original serial number of the product is removed, altered or obliterated from the product.
 - The product purchased is not used as per the rated power conditions or instructions mentioned in the INSTRUCTION MANUAL.
 - The product is being used for commercial purpose OR if the product has been used excessively and beyond reasonable usage as permitted within the product instruction manual.
 - Site (premises where the product is used/ kept) conditions that do not conform to the recommended operations of the product.
 - Defects caused due to exposure to moisture/dampness/extreme thermal or environmental conditions or rapid changes in such conditions/corrosions/oxidations/spilling of food/liquid/influence of Chemical substances.
 - Defects due to causes beyond control like lightning, abnormal voltage, spikes, external sources (ex: cable/sat top box connections), fire, water logging, natural calamities, commotion, riots, theft, anti-social action, acts of God or while in transit.
 - Defects caused by household pets, rats, cockroaches, ants, pests, fungi or any other animal/birds/insects.
 - Defects caused due to negligence/omission of the Purchaser on account of periodic maintenance(s)/periodic servicing as mentioned in the instruction manual of the product.
 - Defects caused due to usage of third party material/non Samsung Authorized Consumables.
 - Any modifications, including but not limited to, rooting attempts, reverse engineering, unlocking, jail-breaking etc. of the original firmware(s) or software(s) of the product.
 - Repair due to misuse/third party repair attempts are not covered in warranty.
 - Warranty does not cover repair due to external factors/mediums/data types.
 - Warranty shall apply only if the product is used as per its usage specifications (ex: personal, commercial etc.)
 - Warranty shall be void if product has failed under certain conditions/types (ex: water logging, misuse, etc.)
- All disputes arising out of this warranty are subject to Delhi jurisdiction only.

Warranty period commences from the date of purchase of the product unless specified otherwise.

Product Group	Product Description	Warranty Period (Months)	Parts/Accessory Warranty(If applicable)
Washing Machine	Semi Automatic	24	Wash Motor : 60 months on Semi Automatic Wash Motor *
	Rear control panel Top Loading Fully Automatic	24	AC Motor : 120 months * Digital Inverter Motor : 240 months *
	Front control panel Top Loading Fully Automatic	24	(Applicable for Rear & Front Control Panel models with Wobble Pulsator) *
	Fully Auto Front Loading	24	Universal motor : 60 months * Digital Inverter Motor : 240 months *