



Defender Step

PART NO. IBDS-C001

FITS:

2015-Up Chevy Colorado Crew Cab
2015-Up GMC Canyon Crew Cab



60-120 min



Cutting Not
Required



Drilling Not
Required

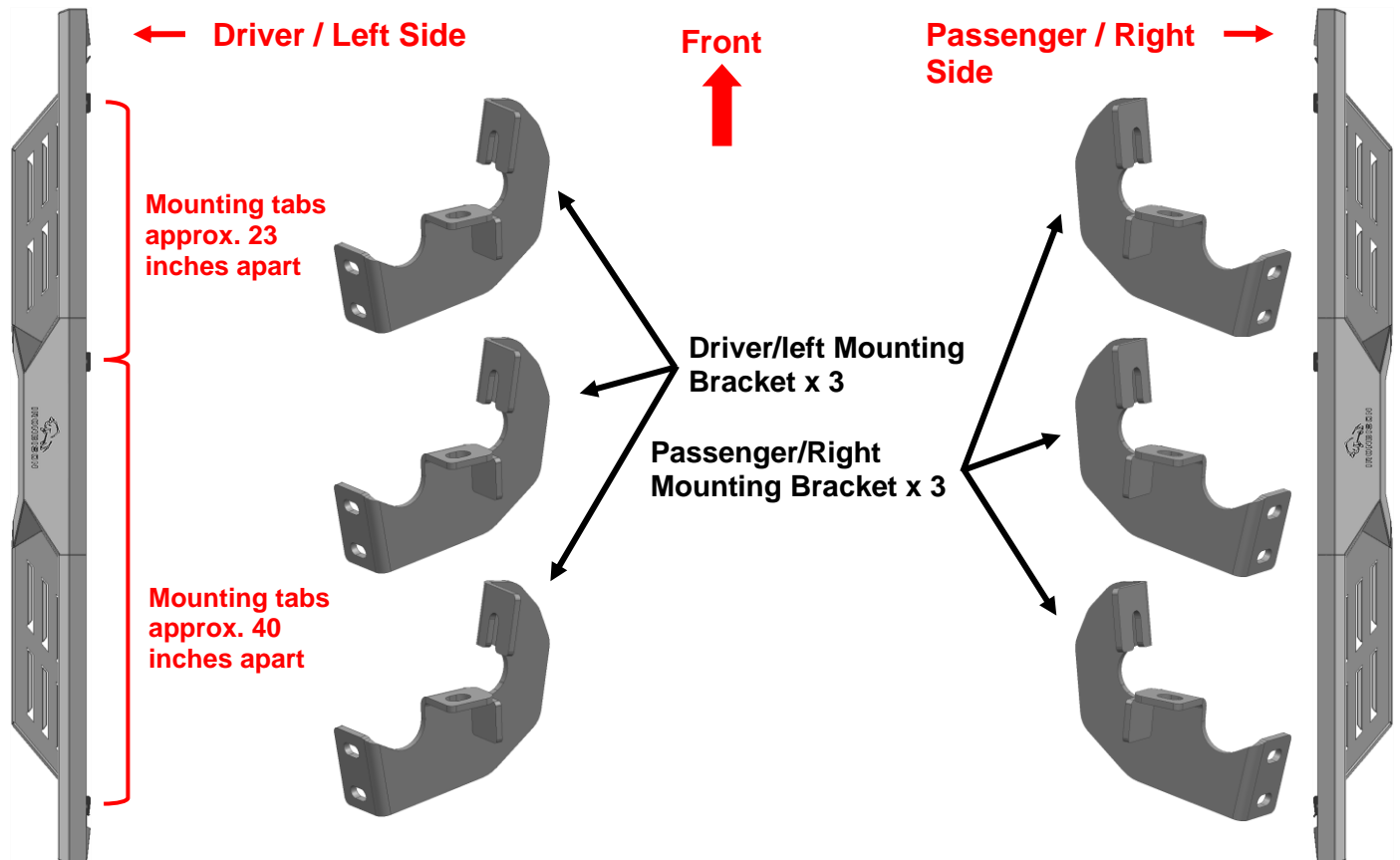
Torque & Tools

| Fastener Size | Tightening Torque (ft-lbs) | Wrench Required | | Allen Wrench Required | |
|---|---|-----------------|--|-----------------------|------------------------------|
| <input type="checkbox"/> 6mm | <input type="checkbox"/> 7-8.5 | | <input type="checkbox"/> 10mm | | <input type="checkbox"/> 4mm |
| <input checked="" type="checkbox"/> 8mm | <input checked="" type="checkbox"/> 18-20 | | <input checked="" type="checkbox"/> 13mm | | <input type="checkbox"/> 5mm |
| <input type="checkbox"/> 10mm | <input type="checkbox"/> 35-40 | | <input type="checkbox"/> 16mm | | <input type="checkbox"/> 6mm |
| <input type="checkbox"/> 12mm | <input type="checkbox"/> 60-70 | | <input type="checkbox"/> 18mm | | <input type="checkbox"/> 8mm |

BEFORE INSTALLATION

REMOVE CONTENTS FROM BOX. VERIFY ALL PARTS ARE PRESENT
DEPEND ON THE PARTS LIST. READ INSTRUCTIONS CAREFULLY. RUNNING
BOARD IS HEAVY, ASSISTANCE IS HIGHLY RECOMMENDED TO AVOID
POSSIBLE INJURY OR DAMAGE TO THE VEHICLE.

Part List





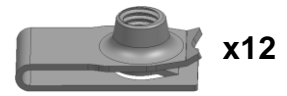
8mm x 30mm
Hex Bolt



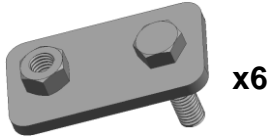
8mm x 24mm Flat
Washer



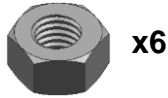
8mm Lock Washer



8mm Clip
Nut



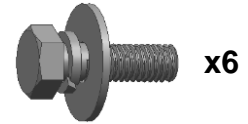
8mm Bolt/Nut
Plate



8mm Hex Nut



8mm Plastic
Retainer



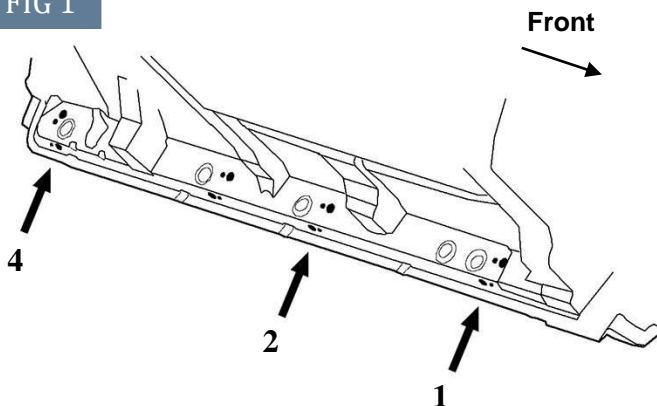
8mm x 25mm
Combo Bolt

PLEASE NOTE THAT THE FOLLOWING PICTURES ARE BASED ON THE DRIVER SIDE INSTALLATION

STEP 1

Start the installation under the Driver/Left side of the vehicle. Locate the front mounting location along the bottom and inner side of the body panel, **(Fig 1)**. Installation will use the 1st, 2nd and 4th mounting locations. **NOTE:** It may help to hold a Bracket up in place to help determine the mounting holes to use along the bottom and inner side of the body.

FIG 1

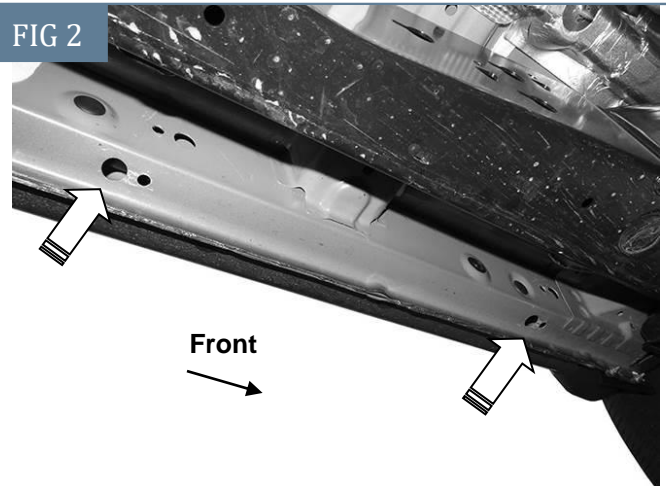


(Fig 1) Driver side mounting locations along bottom and back of body panel illustrated

STEP 2

Remove rubber plugs as necessary from the holes in the side and bottom of the inner body panel, **(Fig 2)**.

FIG 2

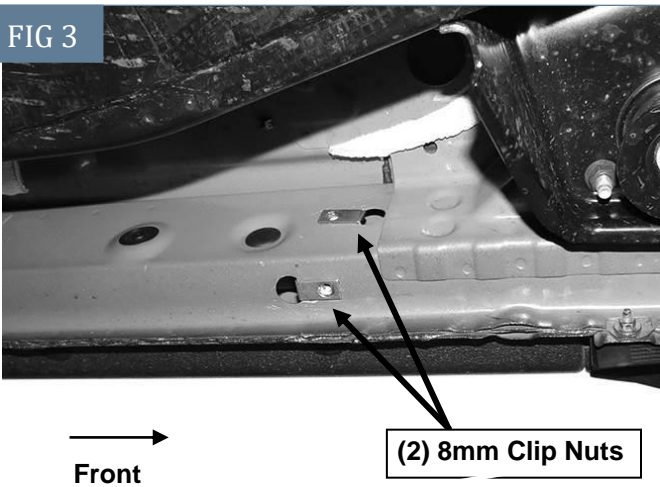


(Fig 2) Remove rubber plugs from front and center mounting locations (arrows)

STEP 3

Select (2) 8mm Clip Nuts. Slide each Clip Nut into the large hole and over the smaller hole next to it. Line up threaded nut on the Clip Nut with smaller hole in body panel, **(Fig 3)**

FIG 3

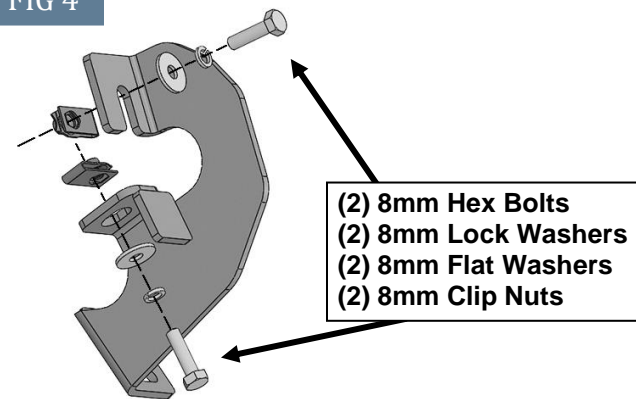


(Fig 3) Slide 8mm Clip Nut into large hole and over small hole

STEP 4

Select (1) Driver/Left Mounting Bracket. Attach the Mounting Bracket to the (2) Clip Nuts in the vehicle with (2) 8mm Hex Bolts, (2) 8mm Lock Washers and (2) 8mm Flat Washers, (Fig 4). Do not tighten hardware.

FIG 4

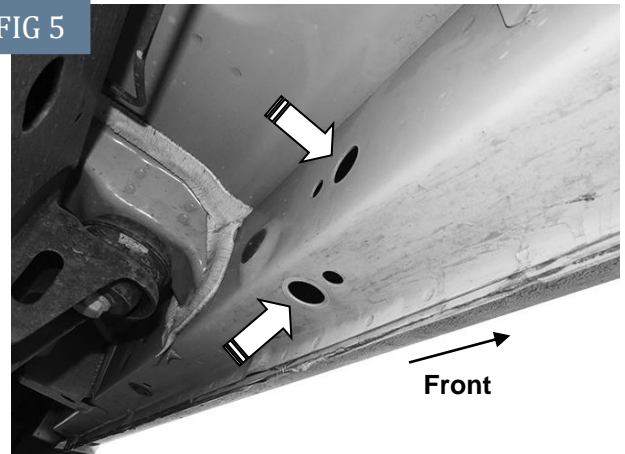


(Fig 4) Attach (1) Driver/Left Mounting Bracket to the Clip Nuts

STEP 5

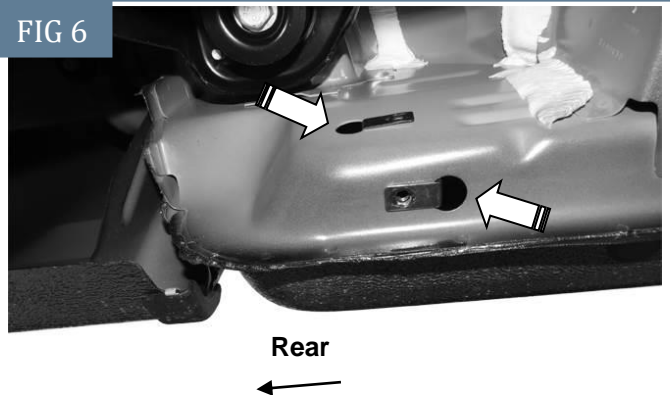
Repeat **Steps 1—4** to attach the remaining (2) Driver/Left Mounting Bracket to the center and rear locations, (Figs 5 & 6). Do not tighten hardware.

FIG 5



(Fig 5) Driver/left side center mounting location

FIG 6

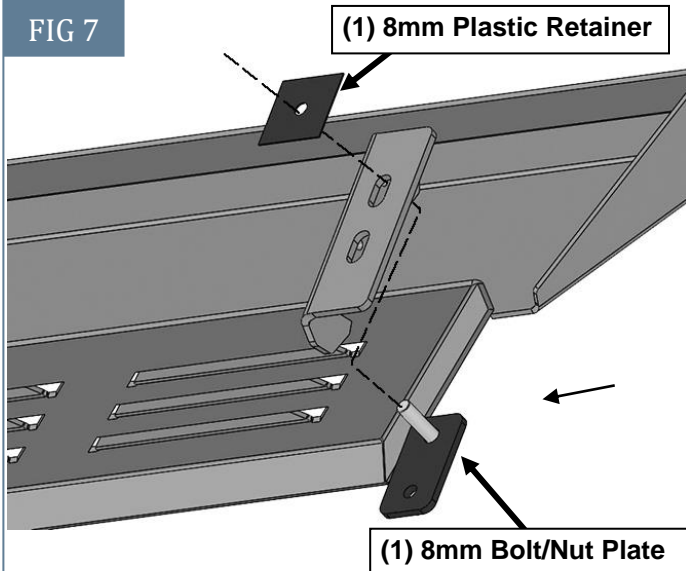


(Fig 6) Driver/left side rear mounting location

STEP 6

Select the Driver/Left Running Board. Insert (1) 8mm Bolt/Nut Plate into the front mounting tabs on the Running Board. Thread (1) 8mm Plastic Retainer onto the threads of the Bolt/Nut Plate to hold it in place **(Fig 7)**. Do not tighten hardware.

FIG 7



(Fig 7) Insert (1) 8mm Bolt/Nut Plate into the mounting tabs of the Running Board

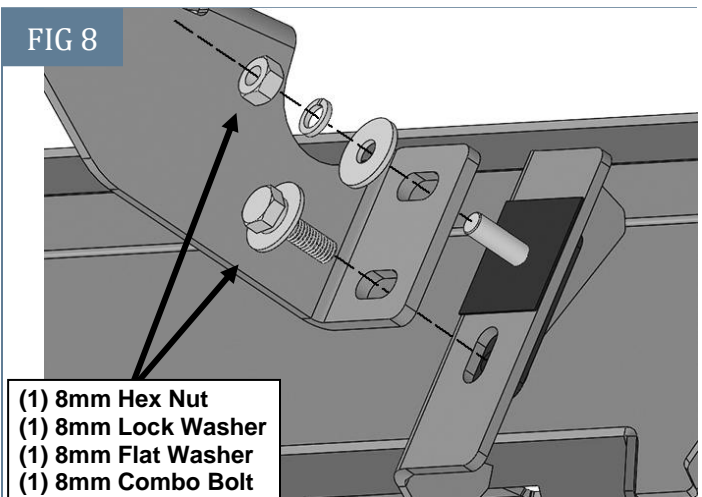
STEP 7

Repeat **Step 6** insert (2) 8mm Bolt/Nut Plates into the center and rear mounting tabs.

STEP 8

Attach the Running Board to the (3) Mounting Brackets with (3) 8mm Flat Washers, (3) 8mm Lock Washers, (3) 8mm Hex Nuts and (3) 8mm Combo Bolts, **(Fig 8)**. Do not tighten hardware.

FIG 8



(Fig 8) Attach the Driver/Left Running Board to the Mounting Brackets

STEP 9

Level and adjust the Running Board and fully tighten all hardware.

STEP 10

Repeat **Steps 1—9** to attach the Passenger/Right Running Board.

STEP 11

Do periodic inspections to the installation to make sure that all hardware is secure and tight.

Attention

To protect your investment, do not use any type of polish or wax that may contain abrasives that could damage the finish.

Mild soap may be used also to clean the Running Boards.