

MARKETPRO

Stock Lighting Solutions

SELECTABLE LIGHTING PRODUCT GUIDE

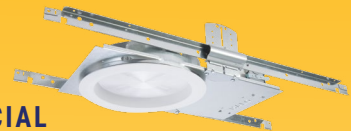
RESIDENTIAL | COMMERCIAL | INDUSTRIAL



HALO



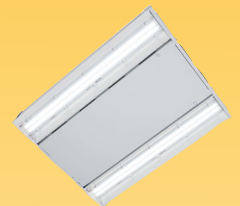
HALO
COMMERCIAL



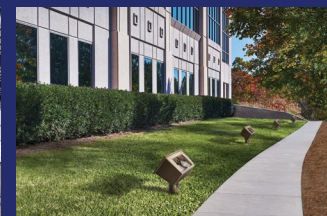
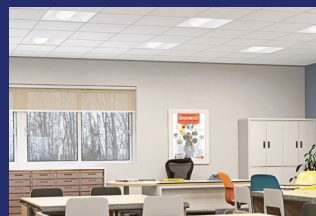
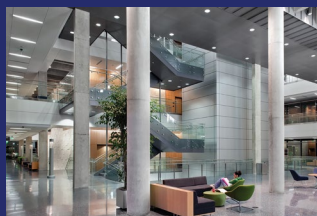
METALUX
COMMERCIAL



METALUX
INDUSTRIAL



LUMARK



Our Brands and Markets We Serve

RESIDENTIAL



COMMERCIAL



INDUSTRIAL



We deliver a range of innovative and reliable indoor and outdoor lighting and control product solutions, as well as controls products specifically designed to maximize performance, energy efficiency and cost savings.

HALO Recessed & Surface Downlights

The brand leader of high-quality recessed downlights, surface and direct mount solutions featuring state-of-the-art engineering and performance.

PAGE **8**

METALUX Ambient Commercial & Industrial

Commercial and industrial recessed, linear, surface and high bay solutions featuring the latest LED and driver technology for optimal performance.

PAGE **22**

LUMARK Outdoor Commercial & Industrial

High-quality outdoor lighting for wall mount, floodlighting and area/site applications that provides ease of installation and superior area safety.

PAGE **28**

Selectable Technology

Multiple Light Choices, One Fixture.

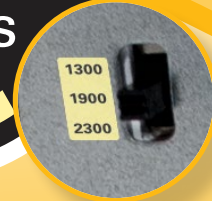
seleCCTable™
colors



SELECTABLE COLORS (CCT)

Choose from a wide range of color temperatures to set the ideal lighting scene.

selectable
lumens



SELECTABLE LUMENS

Select between the preset lumen outputs to create your optimal lighting experience.

Explore **100+**
selectable products
from HALO, Metalux
and Lumark

Field-selectable technology empowers you to take control. Go selectable to choose your way, every time. Adjust color temperatures (CCT) and lumen outputs with the flip of a switch!



Visit cooperlighting.com/selectable to download the latest catalog.



At Cooper Lighting Solutions, we deliver industry leading indoor and outdoor lighting products, lighting controls, smart lighting systems, programs and services.

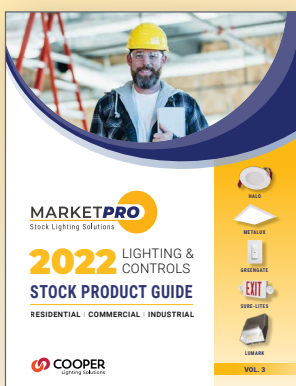
VISIT OUR
NEW MARKETPRO website

Your one-stop shop for tools and resources designed to help grow your business

[COOPERLIGHTING.COM/MARKETPRO](https://cooperlighting.com/marketpro)

**VISIT
TODAY!**

- ✓ Product Catalog
- ✓ E-Commerce Tools
- ✓ Find Utility Rebates
- ✓ Sample Before You Buy
- ✓ Marketing & Training



Visit cooperlighting.com/marketpro to download the latest catalog.

READILY-AVAILABLE SOLUTIONS FOR ALL PROJECTS FROM OUR TRUSTED BRANDS

The MarketPro program provides our customers with top selling lighting and controls products from industry-preferred brands for their trusted performance, reliability and quality. These products are in-stock and ready to ship to meet your project needs.



In-Stock

Our essential products are in stock and readily-available to ship



Top Brands

Trusted products from HALO, Metalux, Greengate, Sure-Lites and Lumark



Proven Best Sellers

Contractor preferred top selling lighting and controls products



Sample Before You Buy

Try new products risk free



Innovation

State-of-the-art product innovation, direct mount installation, selectable technology and integrated controls



Utility Incentives

Products qualify for ENERGY STAR® and DLC®, saving money and adding value



Expanded Selection

Customizable lighting products available through our Rapid Response and Quick Ship programs



Training & Education

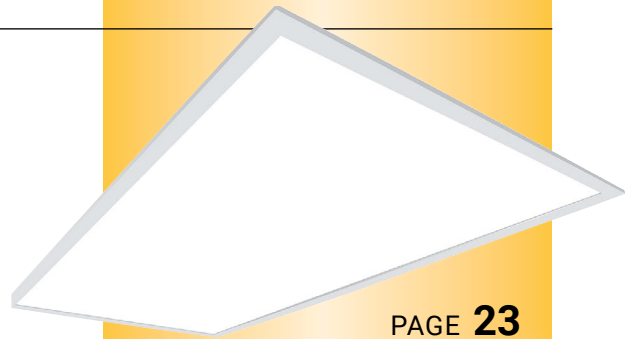
Online and instructor-led classes to expand your lighting and controls knowledge

New Product Spotlight

Check out these new products from Metalux that feature selectable technology and customizable options. Field selectable technology empowers you to adapt to the ever-changing needs of your space creating the most optimal lighting experience.

► Metalux CGTS Flat Panel

The CGTS series features selectable switches located on the top of the junction box, for quick and easy adjustment.



PAGE 23

► Metalux SLSTPS Striplight

The SLSTP series is single and continuous mount capable with selectable color temperatures and lumen options for flexibility.



PAGE 24

► Metalux SNX Striplight

The SNX series is designed to meet any customization needs with three selectable color temperatures and lumen settings.



PAGE 24



► Metalux ST2 Striplight

The ST2 series features selectable color temperatures and UNV 0-10V dimming to 10% for added energy savings and control.



PAGE 25

► Metalux NWS Wrap

The NWS series is ideal for replacing fluorescent lamp wraps and offers both selectable color temperatures and lumens.



PAGE 25

HALO RECESSED



Canless Direct Mount
p. 9-15



Surface Mount
p. 16-17



Retrofit Module
p. 18-19

HALO®

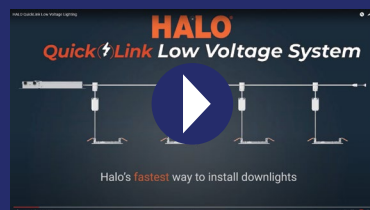
Recessed LED Downlighting

HALO is the industry leader in high-quality recessed downlighting, offering the widest selection of innovative and flexible solutions for your application needs.

- **Go Fast.** Reduce install time with more ease.
- **Go Custom.** Flexible field selectable solutions.
- **Go Adjustable.** Shine light exactly where you need it.
- **Go Slim.** Install in ultra-shallow plenum.



Scan to browse HALO
Recessed videos



GO WHERE STANDARD “CAN” LIGHTING CAN’T

It's time to expect more from your lighting: more functionality, more flexibility, and more canless direct mount product options than any other brand on the market.

Go Slim.



With canless, low-profile direct mounts available in multiple form factors and optical packages.

Available with HLB Series

Go Classic.



With direct mount products that mimic the look of traditional recessed trim flawlessly.

Available with RL, LT Series

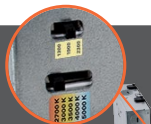
Go Adjustable.



Adjustable solutions to shine light exactly where you need it.

Available with Slope, RA, LA, HLA Series

Go Custom.



With control options like field-selectable color temperature and lumens, dimming, and directional lenses.

Go Fast.



With thoughtful, unique features that reduce installation time, cost and increases ease of use.



1 Cut hole in ceiling.



2 Connect wiring to junction box.



3 Select color temp or lumen if available.



4 Connect module to driver and install into ceiling.



5 Push module up into the ceiling.

HALO CANLESS DIRECT MOUNT

HLB Downlight CANLESS DIRECT MOUNT

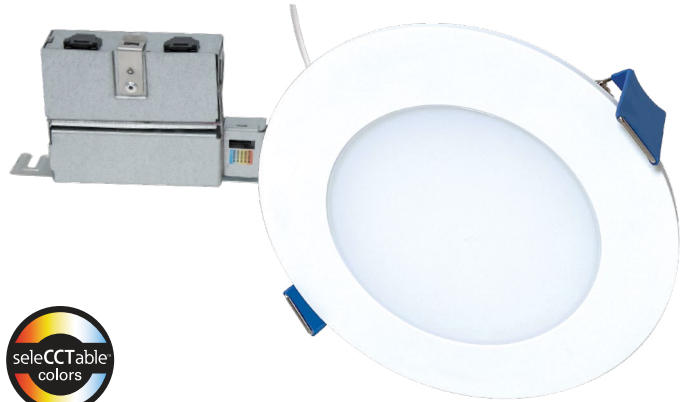
- Ultra-thin prismatic LED lens downlight with remote driver/junction box
- Installs into drywall/suspended ceiling (no j-box or housing required)
- 5 field-selectable CCT: 2700K, 3000K, 3500K, 4000K, 5000K; 90 CRI
- Install from below the ceiling in as little as 3-1/2-inch plenum height
- Insulated Ceiling (IC) rated and Non-IC rated applications



Catalog Number	Description	Finish	Replaces Up To	Selectable CCT	Voltage	Lumens	Watts	UPC	ENERGY STAR ID
HLB3059FS1EMWR	3" Module, Round	White	40W INC	2700K-5000K	120V	500	9	080083151301	N/A
HLB3S059FS1EMWR	3" Module, Square	White	40W INC	2700K-5000K	120V	500	9	080083151325	2336938
HLB4SP069FS1EMWR	4" Module, Square	White	65W INC	2700K-5000K	120V	600	10	080083909667	2347583
HLB4069FS1EMWR	4" Module, Round	White	65W INC	2700K-5000K	120V	752	12	080083848140	2322243
HLB4069FSE010MWR	4" Module, Round	White	60W INC	2700K-5000K	120-277V	750	11	080083912261	2351376
HLB4S069FSE010MWR	4" Module, Square	White	60W INC	2700K-5000K	120-277V	725	11	080083912308	2351374
HLB6099FS1EMWR	6" Module, Round	White	65W INC	2700K-5000K	120V	1103	16	080083848164	2322242
HLB6S099FS1EMWR	6" Module, Square	White	65W INC	2700K-5000K	120V	1103	12	080083863389	2331663
HLB6099FSE010MWR	6" Module, Round	White	75W INC	2700K-5000K	120-277V	1061	15	080083912285	2351377
HLB6S099FSE010MWR	6" Module, Square	White	75W INC	2700K-5000K	120-277V	1050	15	080083912322	2351375
HLB8169FS1EMWR	8" Module, Round	White	90W INC	2700K-5000K	120V	1600	21	080083150601	2358047
HLB8LS9FSE010MWR	8" Module, Round	White	150W INC	2700K-5000K	120-277V	2400	31	080083083367	2358045
HLB12LS9FSE010MWR	12" Module, Round	White	150W INC	2700K-5000K	120-277V	2400	32	080083088782	N/A

HLB Slim Edge Downlight CANLESS DIRECT MOUNT

- Smooth LED lens downlight with remote driver/junction box
- Installs into drywall/suspended ceiling (no j-box or housing required)
- 5 field-selectable CCT: 2700K, 3000K, 3500K, 4000K, 5000K; 90 CRI
- Install from below the ceiling in as little as 1-1/2 inch plenum height
- Insulated Ceiling (IC) rated and Non-IC rated applications



Catalog Number	Description	Finish	Replaces Up To	Selectable CCT	Voltage	Lumens	Watts	UPC	ENERGY STAR ID
HLBPH4069FS1EMWR	4" Module, Round	White	65W INC	2700K-5000K	120V	830	10	080083190003	2385132
HLBPH6099FS1EMWR	6" Module, Round	White	65W INC	2700K-5000K	120V	1100	14	080083190027	2385133

HALO CANLESS DIRECT MOUNT

HLB Lite Downlight

CANLESS DIRECT MOUNT

- Ultra-thin LED lens downlight with remote driver/junction box
- Installs into drywall/suspended ceiling (no j-box or housing required)
- Features a round polymer trim and smooth lens
- 3 field-selectable CCT: 2700K, 3000K, 3500K, 4000K, 5000K; 90 CRI
- Install from below the ceiling in 3/8-inch to 5/8-inch thick ceilings



Catalog Number	Description	Finish	Replaces Up To	Selectable CCT	Voltage	Lumens	Watts	UPC	ENERGY STAR ID
HLBSL4069FS231EMWR	4" Module, Round	White	60W INC	2700K - 3500K	120V	753	10	080083912346	2349484
HLBSL4069FS351EMWR	4" Module, Round	White	60W INC	3000K - 5000K	120V	716	10	080083916368	2349485
HLBSL4069FS461EMWR	4" Module, Round	White	60W INC	4000K - 6000K	120V	771	10	080083912384	2388764
HLBSL6099FS231EMWR	6" Module, Round	White	75W INC	2700K - 3500K	120V	954	13	080083912360	2349475, 2349476, 2349477
HLBSL6099FS351EMWR	6" Module, Round	White	75W INC	3000K - 5000K	120V	940	13	080083916382	2349478, 2349479, 2349480
HLBSL6099FS461EMWR	6" Module, Round	White	75W INC	4000K - 6000K	120V	1015	12	080083912407	2388798

RL Baffle Trim Downlight

CANLESS DIRECT MOUNT

- 4 and 6-inch regressed LED lens downlights with remote driver/junction box
- Installs into drywall/suspended ceiling (no j-box or housing required)
- 5 field-selectable CCT: 2700K, 3000K, 3500K, 4000K, 5000K; 90 CRI
- Can be installed in 1/2-inch to 1 1/4-inch thick ceilings
- Insulated ceiling (IC) and non-IC rated; Dimmable to 5% (120V dimmers)



Catalog Number	Description	Finish	Replaces Up To	Selectable CCT	Voltage	Lumens	Watts	UPC	ENERGY STAR ID
RL4069S1EWHDM	4" Direct Mount Module	White	65W INC	2700K-5000K	120V	652	9	080083858101	2325604
RL4069S1EWHDMR	4" Direct Mount Module	White	65W INC	2700K-5000K	120V	600	9	080083858064	2388493
RL6069S1EWHDM	6" Direct Mount Module	White	65W INC	2700K-5000K	120V	719	9	080083858125	2325603

RL Night Light Downlight

CANLESS DIRECT MOUNT

- 4 and 6-inch LED night light downlight with remote driver/junction box
- Installs into drywall/suspended ceiling (no j-box or housing required)
- 2" depth great for use in ultra-shallow plenum spaces
- Two modes: downlight mode and nightlight mode
- 5 field-selectable CCTs: 2700K, 3000K, 3500K, 4000K, 5000K; 90 CRI



Catalog Number	Description	Finish	Replaces Up To	Selectable CCT	Voltage	Lumens	Watts	UPC	ENERGY STAR ID
RL4069NLWHDNR	4" Module, Round	White	65W INC	2700K - 5000K	120V	845	9	080083183005	2381590
RL6069NLWHDNR	6" Module, Round	White	75W INC	2700K - 5000K	120V	1115	11	080083183029	2381581

HALO CANLESS DIRECT MOUNT

RA Baffle Trim Adjustable Gimbal Downlight CANLESS DIRECT MOUNT

- 4 and 6-inch adjustable LED gimbal downlight with remote driver/junction box
- Installs into drywall/suspended ceiling (no j-box or housing required)
- 360° rotation and 35° tilt; Dimmable to 5% (120V dimmers)
- 5 field-selectable CCT: 2700K, 3000K, 3500K, 4000K, 5000K; 90 CRI
- Insulated ceiling (IC) and non-IC rated



Catalog Number	Description	Finish	Replaces Up To	Selectable CCT	Voltage	Lumens	Watts	UPC	ENERGY STAR ID
RA4069S1EWHDMR	4" Adjustable Direct Mount	White	60W INC	2700K - 5000K	120V	768	9	080083911325	2351865
RA6069S1EWHDMR	6" Adjustable Direct Mount	White	60W INC	2700K - 5000K	120V	770	9	080083911349	2351876

RL Slope Ceiling Downlight CANLESS DIRECT MOUNT

- 4 and 6-inch canless LED direct mount modules
- Adjusts from 9° to 45° to match virtually any ceiling pitch
- 5 field-selectable CCT: 2700K, 3000K, 3500K, 4000K, 5000K; 90 CRI
- Installs into drywall/suspended ceiling (no j-box or housing required)
- Compatible with Halo new construction mounting frames



Catalog Number	Description	Finish	Replaces Up To	Selectable CCT	Voltage	Lumens	Watts	UPC	ENERGY STAR ID
RLS4099FS1EWHDMR	4" Module, Round	White	75W INC	2700K - 5000K	120V	1027	11	080083190300	2382794
RLS6159FS1EWHDMR	6" Module, Round	White	75W INC	2700K - 5000K	120V	1745	19	080083190324	2382795

HLA Adjustable Gimbal Downlight CANLESS DIRECT MOUNT

- 4-inch adjustable gimbal LED downlight with remote driver/junction box
- Installs into drywall/suspended ceiling (no j-box or housing required)
- 360° rotation and 30° tilt; Distributions: 40° flood, 80° very wide flood
- 5 field-selectable CCT: 2700K, 3000K, 3500K, 4000K, 5000K; 90 CRI
- Insulated ceiling (IC) and non-IC rated; Dimmable down to 5% (120V dimmers)



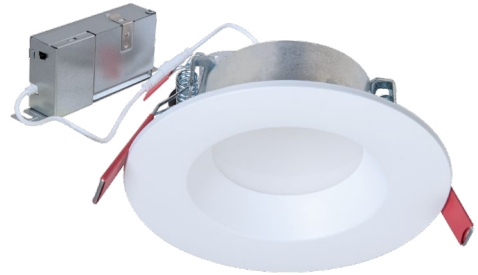
Catalog Number	Description	Finish	Replaces Up To	Selectable CCT	Voltage	Lumens	Watts	UPC	ENERGY STAR ID
HLA406FL9FS1EMWR	4" Adjustable Direct Mount	White	65W INC	2700K-5000K	120V	660	11	080083882960	2341271
HLA406VWFL9FS1EMWR	4" Adjustable Direct Mount	White	65W INC	2700K-5000K	120V	660	11	080083863600	2333844

HALO CANLESS DIRECT MOUNT

LT Selectable Downlight

CANLESS DIRECT MOUNT

- 3, 4 and 6-inch smooth splay LED downlights with remote driver/junction box
- Installs into drywall/suspended ceiling (no j-box or housing required)
- 3 field-selectable CCT: 2700K, 3000K, 3500K or 3000K, 4000K, 5000K; 90 CRI
- Dimmable down to 10% with select phase cut dimmers
- Insulated ceiling (IC) and non-IC rated; Deadfront



Catalog Number	Product Description	Finish	Replaces Up To	Selectable CCT	Voltage	Lumens	Watts	UPC	ENERGY STAR ID
LT3059FS231EWHDMR	3" Direct Mount Module	White	40W INC	2700K-3500K	120V	500	7	080083159680	2373973
LT3059FS351EWHDMR	3" Direct Mount Module	White	40W INC	3000K-5000K	120V	500	7	080083159628	2373976
LT4069FS231EWHDMR	4" Direct Mount Module	White	40W INC	2700K-3500K	120V	600	7	080083159925	2374009
LT4069FS351EWHDMR	4" Direct Mount Module	White	40W INC	3000K-5000K	120V	600	7	080083159642	2374012
LT6089FS231EWHDMR	6" Direct Mount Module	White	65W INC	2700K-3500K	120V	800	8	080083159963	2374019
LT6089FS351EWHDMR	6" Direct Mount Module	White	65W INC	3000K-5000K	120V	800	9	080083159666	2374021

LCR Light Commercial Retrofit Downlight

CANLESS DIRECT MOUNT

- Light commercial LED downlight in 2, 4, 6 and 8-inch sizes
- Installs into drywall/suspended ceiling (no j-box or housing required)
- 5 field-selectable CCT: 2700K, 3000K, 3500K, 4000K, 5000K; 90 CRI
- Regressed lens and smooth baffle provide high optical cutoff
- Wide distribution pattern is ideal for general area illumination; Airtight



Catalog Number	Description	Finish	Replaces Up To	Selectable CCT	Voltage	Lumens	Watts	UPC	ENERGY STAR ID
LCR2089FS1EMW	2" LCR Direct Mount	White	65W INC	2700K - 5000K	120-227V	800	9	080083130061	2357903
LCR2089FSE010MW	2" LCR Direct Mount	White	65W INC	2700K - 5000K	120-227V	800	9	080083889969	2351780
LCR4089FSE010MW	4" LCR Direct Mount	White	65W INC	2700K - 5000K	120-227V	800	9	080083889983	2351828
LCR4129FSE010MW	4" LCR Direct Mount	White	75W INC	2700K - 5000K	120-227V	1200	15	080083890002	2351827
LCR6159FSE010MW	6" LCR Direct Mount	White	72W INC	2700K - 5000K	120-277V	1604	16	080083890026	2351826
LCR6219FSE010MW	6" LCR Direct Mount	White	72W INC	2700K - 5000K	120-277V	2329	25	080083890040	2351825
LCR6309FSE010MW	6" LCR Direct Mount	White	130W INC	2700K - 5000K	120-277V	2981	30	080083890064	2351824
LCR8309FSE010MW	8" LCR Direct Mount	White	130W INC	2700K - 5000K	120-277V	3153	35	080083890088	2351823
LCR8509FSE010MW	8" LCR Direct Mount	White	130W INC	2700K - 5000K	120-277V	4841	47	080083890101	2351822
LCR8809FSE010MW	8" LCR Direct Mount	White	130W INC	2700K - 5000K	120-277V	7752	94	080083890125	2365275

Installing downlights has never been faster.

QuickLink delivers the fastest downlighting installation HALO has to offer. Power multiple fixtures on the single power supply for easy and efficient lighting installation.

- Each QuickLink Kit contains a remote power supply, low voltage cable and canless downlights
- Each fixture attaches to the low voltage cable with QuickLink Twist Connectors
- Mix and match individual fixtures to complete the project

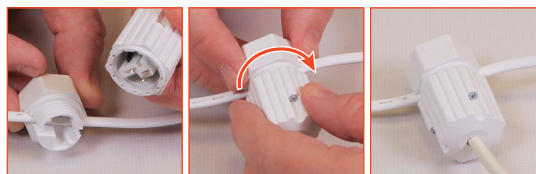
QuickLink Low Voltage System



1 POWER SUPPLY & MULTIPLE FIXTURES



With QuickLink Twist Connectors, each fixture attaches to the low voltage cable in seconds. The flexibility of the system allows the user to mix and match the compatible HALO QuickLink canless fixtures onto the same low voltage cable.



HALO CANLESS DIRECT MOUNT

QuickLink Phase Cut Dimming Low Voltage System CANLESS DIRECT MOUNT

- Kits include: 72W remote driver, cable and 4 or 6-inch HLB or LT-DM downlights
- Add additional fixtures and power up to 8 fixtures on 1 driver
- 5 field-selectable CCT: 2700K, 3000K, 3500K, 4000K, 5000K; 90 CRI
- QuickLink Connectors offer ultra-fast wiring and installation
- 120V input, phase cut dimming to 5%



Catalog Number	Description	Max Fixtures	Finish	Replaces Up To	Selectable CCT	Voltage	Lumens	Watts Per	UPC	ENERGY STAR ID
HLBQL4069FS1E-4PK	Kit: (1) Driver, Cable, (4) 4" HLB Fixtures	7	White	65W INC	2700K - 5000K	120V	640	8	080083190102	2388203
HLBQL6099FS1E-4PK	Kit: (1) Driver, Cable, (4) 6" HLB Fixtures	6	White	65W INC	2700K - 5000K	120V	975	12	080083190126	2388204
HLBQL4069FS1E	(1) 4" HLB Fixture*	-	White	65W INC	2700K - 5000K	120V	640	8	080083190188	N/A
HLBQL6099FS1E	(1) 6" HLB Fixture*	-	White	65W INC	2700K - 5000K	120V	975	12	080083190218	N/A
LTQL4069S1EDM-4PK	Kit: (1) Driver, Cable, (4) 4" LT-DM Fixtures	8	White	65W INC	2700K - 5000K	120V	675	7	080083190140	2388205
LTQL6069S1EDM-4PK	Kit: (1) Driver, Cable, (4) 6" LT-DM Fixtures	8	White	65W INC	2700K - 5000K	120V	825	8	080083190164	2388206
LTQL4069S1EDM	(1) 4" LT-DM Fixture*	-	White	65W INC	2700K - 5000K	120V	675	7	080083190232	N/A
LTQL6069S1EDM	(1) 6" LT-DM Fixture*	-	White	65W INC	2700K - 5000K	120V	825	8	080083190256	N/A

*Driver not included. Only compatible with the HALO QuickLink 120V phase cut system

QuickLink 0-10V Dimming Low Voltage System CANLESS DIRECT MOUNT

- Kits include: 90W remote driver, cable and 4 or 6-inch HLB or RL-DM downlights
- Add additional fixtures and power up to 13 fixtures on 1 driver
- 5 field-selectable CCT: 2700K, 3000K, 3500K, 4000K, 5000K; 90 CRI
- QuickLink Connectors offer ultra-fast wiring and installation
- 120-277V input, 0-10V dimming to 5%



Catalog Number	Description	Max Fixtures	Finish	Replaces Up To	Selectable CCT	Voltage	Lumens	Watts Per	UPC	ENERGY STAR ID
HLBQL4069FSE010-6PK	Kit: (1) Driver, Cable, (6) 4" HLB Fixtures	11	White	65W INC	2700K - 5000K	120-277V	605	8	080083182206	2388712
HLBQL6099FSE010-6PK	Kit: (1) Driver, Cable, (6) 6" HLB Fixtures	7	White	65W INC	2700K - 5000K	120-277V	935	12	080083182220	2388713
HLBQL4069FSE010	(1) 4" HLB Fixture*	-	White	65W INC	2700K - 5000K	120-277V	605	8	080083182367	N/A
HLBQL6099FSE010	(1) 6" HLB Fixture*	-	White	65W INC	2700K - 5000K	120-277V	935	12	080083182381	N/A
RLQL4069SE010DM-8PK	Kit: (1) Driver, Cable, (8) 4" RL-DM Fixtures	13	White	65W INC	2700K - 5000K	120-277V	620	7	080083182282	2388378
RLQL6069SE010DM-8PK	Kit: (1) Driver, Cable, (8) 6" RL-DM Fixtures	13	White	65W INC	2700K - 5000K	120-277V	665	7	080083182305	2388389
RLQL4069SE010DM	(1) 4" RL-DM Fixture*	-	White	65W INC	2700K - 5000K	120-277V	620	7	080083182442	N/A
RLQL6069SE010DM	(1) 6" RL-DM Fixture*	-	White	65W INC	2700K - 5000K	120-277V	665	7	080083182466	N/A

*Driver not included. Only compatible with the HALO QuickLink 120-277V system

HALO SURFACE MOUNT

SLD Downlight SURFACE MOUNT

- Ultra-low profile 4 and 6-inch surface mount LED downlight
- 5 field-selectable CCT: 2700K, 3000K, 3500K, 4000K, 5000K; 90 CRI
- Ceiling or wall mounting in standard and fire-rated compatible junction boxes
- SLD6 retrofits in 5-inch and 6-inch insulated ceiling (IC) and non-IC rated recessed housings
- Supply wire adapter with LED quick wiring connector included



Catalog Number	Description	Finish	Replaces Up To	Selectable CCT	Voltage	Lumens	Watts	UPC	ENERGY STAR ID
SLDSL4069S1EMWR	4" Surface Downlight	White	65W INC	2700K-5000K	120V	600	9	080083153107	2366149
SLDSL6069S1EMWR	6" Surface Downlight	White	65W INC	2700K-5000K	120V	600	9	080083153121	2366163
SLD6129S1EMWR	6" Surface Downlight	White	75W INC	2700K-5000K	120V	1200	15	080083153145	2373952
SLD6129SE010MWR	6" Surface Downlight	White	75W INC	2700K-5000K	120-277V	1200	15	080083153169	2373954

BLD Downlight SURFACE MOUNT

- 4 and 6-inch low-profile surface mount LED downlight with wide distribution
- 5 field-selectable CCT: 2700K, 3000K, 3500K, 4000K, 5000K; 90 CRI
- Installs in most 3-1/2-inch and 4-inch square, octagon or round junction and pancake boxes
- Retrofits in 4, 5 and 6-inch insulated ceiling (IC) and non-IC rated recessed housings
- Supply wire adapter with LED quick wiring connector included



Catalog Number	Description	Finish	Replaces Up To	Selectable CCT	Voltage	Lumens	Watts	UPC	ENERGY STAR ID
BLD4089SWHR	4" Surface Downlight	White	65W INC	2700K-5000K	120V	802	10	080083826766	2362340
BLD6089SWHR	6" Surface Downlight	White	65W INC	2700K-5000K	120V	812	10	080083826803	2319364

SMD Downlight SURFACE MOUNT

- Low-profile 4, 6 and 12-inch surface mount LED downlight with wide distribution
- 5 field-selectable CCT: 2700K, 3000K, 3500K, 4000K, 5000K; 90 CRI
- Ceiling/Wall mounting in many 3½- and 4-inch square, octagon or round junction boxes
- Retrofits 4-inch and 6-inch insulated ceiling (IC) and non-IC rated recessed housings
- Supply wire adapter with LED quick wiring connector included
- Dimmable to 5% (120V dimmers); 90 CRI



Catalog Number	Description	Finish	Replaces Up To	Selectable CCT	Voltage	Lumens	Watts	UPC	ENERGY STAR ID
SMD4R69SWH	4" Surface Mount	White	60W INC	2700K-5000K	120V	738	9	080083020904	2365919
SMD4S69SWH	4" Surface Mount	White	60W INC	2700K-5000K	120V	757	9	080083020928	2365921
SMD6R69SWH	6" Surface Mount	White	60W INC	2700K-5000K	120V	777	9	080083020942	2365923
SMD6S69SWH	6" Surface Mount	White	60W INC	2700K-5000K	120V	774	9	080083020966	2366348
SMD12R209SWHE	12" Surface Mount	White	150W INC	2700K-5000K	120V	2,232	27	080083138005	N/A

RL Baffle Trim Downlight RETROFIT

- LED baffle-trim module for 3, 4, 5 or 6-inch insulated ceiling (IC) and non-IC rated recessed housings
- Regressed lens; Convex form and lamp-like appearance; Uniform illumination
- 5 field-selectable CCT: 2700K, 3000K, 3500K, 4000K, 5000K; 90 CRI
- Compatible with Leading Edge and Trailing Edge phase control dimmers, Dimmable down to 5%
- Suitable for new construction, remodel and retrofit installation



Catalog Number	Description	Finish	Replaces Up To	Selectable CCT	Voltage	Lumens	Watts	UPC	ENERGY STAR ID
RL3059FS1EWHR	3" Retrofit Baffle-Trim	White	60W INC	2700K-5000K	120V	587	8	080083130047	2353426
RL4069S1EWHR	4" Retrofit Baffle-Trim	White	65W INC	2700K-5000K	120V	621	9	080083818488	2354585
RL4099S1EWHR	4" Retrofit Baffle-Trim	White	65W INC	2700K-5000K	120V	1006	12	080083818501	2321466
RL56069S1EWHR	5/6" Retrofit Baffle-Trim	White	65W INC	2700K-5000K	120V	712	8	080083818525	2356074
RL56099S1EWHR	5/6" Retrofit Baffle-Trim	White	65W INC	2700K-5000K	120V	1006	12	080083818549	2354587
RL56129S1EWHR	5/6" Retrofit Baffle-Trim	White	65W INC	2700K-5000K	120V	1272	14	080083818563	2321465

RA Adjustable Gimbal Downlight RETROFIT

- Adjustable gimbal LED module for 4, 5 and 6-inch insulated ceiling (IC) and non-IC rated recessed housings
- 360° rotation and 35° tilt; Wide distribution
- 5 field-selectable CCT: 2700K, 3000K, 3500K, 4000K, 5000K; 90 CRI
- Compatible with Leading Edge and Trailing Edge phase control dimmers
- Suitable for new construction, remodel and retrofit installation



Catalog Number	Description	Finish	Replaces Up To	Selectable CCT	Voltage	Lumens	Watts	UPC	ENERGY STAR ID
RA4069S1EWHR	4" Retrofit Adjustable, Wide	White	65W INC	2700K-5000K	120V	615	7	080083817849	2319905
RA56069S1EWHR	5/6" Retrofit Adjustable, Wide	White	65W INC	2700K-5000K	120V	630	7	080083817863	2319904

LT Baffle Trim and Smooth Splay Downlight RETROFIT

- LED downlights available with smooth splay or baffle trim
- Installs in 4, 5 and 6-inch insulated ceiling (IC) and non-IC rated recessed housings
- Dedicated or 3 field-selectable CCT: 2700K, 3000K, 3500K or 3000K, 4000K, 5000K; 90 CRI
- Dimmable down to 10% with select phase cut dimmers
- Suitable for use in showers and outdoor covered ceilings



Catalog Number	Description	Finish	Replaces Up To	Selectable CCT	Voltage	Lumens	Watts	UPC	ENERGY STAR ID
LT4069FS231EWHR	4" Retrofit Baffle-Trim	White	40W INC	2700K-3500K	120V	600	7	080083162406	2371503
LT4069FS351EWHR	4" Retrofit Baffle-Trim	White	40W INC	3000K-5000K	120V	600	7	080083162420	2371504
LT56069FS231EWHR	5/6" Retrofit Baffle-Trim	White	65W INC	2700K-3500K	120V	600	7	080083162468	2371505
LT56069FS351EWHR	5/6" Retrofit Baffle-Trim	White	65W INC	3000K-5000K	120V	600	7	080083162482	2371506
LTSS4069FS231EWHWR	4" Retrofit Smooth Splay Trim	White	40W INC	2700K-3500K	120V	600	7	080083162529	2371511
LTSS4069FS351EWHWR	4" Retrofit Smooth Splay Trim	White	40W INC	3000K-5000K	120V	600	7	080083162543	2371512
LTSS56069FS231EWHWR	5/6" Retrofit Smooth Splay Trim	White	65W INC	2700K-3500K	120V	600	7	080083162581	2371513
LTSS56069FS351EWHWR	5/6" Retrofit Smooth Splay Trim	White	65W INC	3000K-5000K	120V	600	7	080083162604	2371514

RSQ All-Purpose Square Downlight RETROFIT

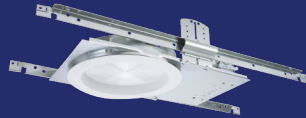
- Retrofits 4, 5 and 6-inch insulated ceiling (IC) and non-IC rated recessed housings
- Regressed flat lens with step baffle provides visual comfort and glare control
- 5 field-selectable CCT: 2700K, 3000K, 3500K, 4000K, 5000K; 90 CRI
- Compatible with Leading Edge and Trailing Edge phase control dimmers, Dimmable down to 5%
- Suitable for new construction, remodel and retrofit installation



Catalog Number	Description	Finish	Replaces Up To	Selectable CCT	Voltage	Lumens	Watts	UPC	ENERGY STAR ID
RSQ4089FS1EMWWB	4" Retrofit Square Baffle-Trim	White	60W INC	2700K-5000K	120V	800	10	080083824496	2333094
RSQ5089FS1EMWWB	5" Retrofit Square Baffle-Trim	White	60W INC	2700K-5000K	120V	900	10	080083824595	2333267
RSQ6089FS1EMWWB	6" Retrofit Square Baffle-Trim	White	60W INC	2700K-5000K	120V	900	10	080083824694	2333093



HALO COMMERCIAL



Downlight
p. 21

HALO®

Commercial LED Lighting

HALO Commercial provides the right balance of visual comfort and energy efficiency, with proven and tested products that always meet commercial code and never break the budget.

- **Versatile.** Convenient field-changeable lenses.
- **Efficient.** Greater lumen delivery and beam distribution.
- **Selectable.** Flexibility in making final settings on-site.
- **No-Fuss.** Contractor-friendly installation.



Scan to browse HALO
Commercial videos



HALO COMMERCIAL DOWNLIGHT

PR4 SeleCCTable™ Series DOWNLIGHT

- 4-inch LED self-flanged, lensed recessed downlight
- Available in new construction and retrofit
- Field selectable lumens: 1000, 1500, 2000
- 3 selectable CCTs: 3000K, 3500K, 4000K; 80 or 90 CRI
- Exclusive medium / wide beam distribution reversible flip lens



Catalog Number	Description	Finish	Replaces Up To	Selectable CCT	Voltage	Selectable Lumens	Watts	UPC	ENERGY STAR ID
PR4FS12D010	4" Housing	Raw Finish	26W-32W	N/A	120-277V	1000-2000	20	080083131839	2353549
PR4M12MD8FSMW	4" LED Module	Matte White	26W-32W	3000K-4000K	120-277V	1000-2000	N/A	080083060795	2353549
PR4RFS12D010	4" Retrofit Kit	Raw Finish	26W-32W	N/A	120-277V	1000-2000	22	080083132683	2353549

PR6 SeleCCTable™ Series DOWNLIGHT

- 6-inch LED self-flanged, lensed LED recessed downlight
- Available in new construction and retrofit
- Field selectable lumens: 1000, 1500, 2000
- 3 selectable CCTs: 3000K, 3500K, 4000K; 80 or 90 CRI
- Medium and wide interchangeable lens option included



Catalog Number	Description	Finish	Replaces Up To	Selectable CCT	Voltage	Selectable Lumens	Watts	UPC	ENERGY STAR ID
PR6FS12D010	6" Housing	Raw Finish	26W-32W	N/A	120/277V 50/60 Hz	1000-2000	21	080083892174	2328770
PR6M12MD8FSMW	6" LED Module	Matte White	26W-32W	3000K-4000K	N/A	1000-2000	N/A	080083891122	2345484
PR6RFS12D010	6" Retrofit Kit	Raw Finish	26W-32W	N/A	120V-277V 50/60 Hz	1000-2000	22	080083891726	2345457, 2345484

PR8 SeleCCTable™ Series DOWNLIGHT

- 8-inch LED self-flanged, lensed recessed downlight
- Available in new construction and retrofit
- 3 selectable CCTs: 3000K, 3500K, 4000K; 80 CRI
- Universal input 120V-277V with 0-10V 1% dimming
- Medium and wide interchangeable lens options



Catalog Number	Description	Finish	Replaces Up To	Selectable CCT	Voltage	Lumens	Watts	UPC	ENERGY STAR ID
PR830D010	8" Housing	Raw Finish	65W	N/A	120V-277V	3000	28	080083771790	2289674
PR8M34MDMW	8" LED Module	Matte White	65W-85W	3000K-4000K	Low Voltage	3000 or 4000	N/A	080083772940	2289767
PR8R30D010	8" Retrofit Kit	Raw Finish	65W	N/A	120V-277V	3000	28	080083772193	2289686

METALUX COMMERCIAL



Flat Panel
p. 23



Flushmount
p. 24



Striplight
p. 24-25



Wrap
p. 25

METALUX

Commercial LED Lighting

Check out the new
selectable products from
Metalux Commercial!



METALUX FLAT PANEL

CGTS Series

FLAT PANEL

- Affordable contractor LED panel with fixed or selectable configurations
- Fits in shallow plenums with room to spare; Thin 2 1/8 inch height
- 3 field-selectable CCT: 3500K, 4000K, 5000K
- 3 field-selectable lumens: Low, Medium or High settings
- Ideal for office spaces, education, healthcare and retail merchandising



Catalog Number	Description	Replaces Up To	Selectable CCT	Voltage	Selectable Lumens	Watts	UPC	DLC Product ID
22CGTS-L3C3	2'x2' Recessed Panel	3-T8 17W, 2-T8 32W	3500K-5000K	120/277V	2500-4900	20/30/35	080083194728	PL74TQBZR6SL
24CGTS-L3C3	2'x4' Recessed Panel	4-T8 32W	3500K-5000K	120/277V	3700-6800	28/41/53	080083194704	PL0ULJMKXBCH

FP | FPS Series

FLAT PANEL

- Ultra-thin LED flat panel; Less than 2-inches height for shallow plenums
- Fixed and selectable configurations available
- Selectable switch to set color temperature, lumens and watts desired for task
- Refined visual optics, superior acrylic light guide; uniform corner to corner illumination
- Ideal solution for office spaces, schools, healthcare facilities and retail merchandising areas



Catalog Number	Description	Replaces Up To	Selectable CCT	Voltage	Selectable Lumens	Watts	UPC	DLC Product ID
22FPSL2SCT3	2'x2' Recessed Panel	3-T8	3000K-4000K	120/277V	1,700-3,500	15	080083889402	PIBWK9P9, PB32RP9H, PJQG8V0T
24FPSL2SCT3	2'x4' Recessed Panel	2-T8, 3-T8	3000K-4000K	120/277V	3,100-6,300	27	080083889365	PK4M6K93, PZFCJCMXS, PU0HKZ87

RBG Series

FLAT PANEL

- Architectural elegant 6-inch grid, 4-inch aperture fixture
- Recessed, surface or suspension mounting
- 3 field-selectable CCT: 3000K, 3500K, 4000K; 80 CRI
- Lumen selectable: 500, 750 or 1,000 lumens per foot



Catalog Number	Description	Replaces Up To	Selectable CCT	Voltage	Selectable Lumens	Watts	UPC	DLC Product ID
4RBG6-SL1-L8SCT3	4' Length	2-F32T8, 1-F54T5HO, 2-F28T5	3000K-4000K	120/277V	500/750/1,000*	36	080083866465	PUREBLSF, PSMWARPL, PW27GGE8

*Lumens per ft.

METALUX FLUSHMOUNT/ STRIPLIGHT

FM Dimming Series

FLUSHMOUNT

- Versatile ceiling- or wall-mount series for a broad range of applications
- 3-field selectable CCT: 3000K, 4000K and 5000K
- Full frost, opal white LED lens provides optimal light output with no pixelation
- Even, uniform light distribution; Easy lens installation
- Perfect for utility or laundry rooms, closets, dormitories and more



Catalog Number	Description	Replaces Up To	Selectable CCT	Voltage	Lumens	Watts	UPC	ENERGY STAR ID
FM11WRCCR	11" Flushmount, Round	22 W T9 Circline	3000K-5000K	120V	1,100	14	080083840151	2324855
FM15WRCCR	15" Flushmount, Round	100W INC or 32W T9 Circline	3000K-5000K	120V	1,800	22	080083845378	2324853

SLSTP | SLSTPS Series

STRIPLIGHT

- LED strip light with decorative end caps and toolless lens removal
- Suitable for either single or continuous row application
- Surface, suspended or wall mounted capable
- Impact resistant polycarbonate lens reduces maintenance
- Ideal for warehouse, retail, office or retrofit applications



Catalog Number	Description	Replaces Up To	Selectable CCT	Voltage	Selectable Lumens	Watts	UPC	DLC Product ID
4SLSTPSLC-UNV	4' Single Lens	2-T8 32W, 1-T5H0 54W	3500K-5000K	120/277V	2700-6500	18/30/50	080083174416	DLC Pending
8SLSTPSLC-UNV	8' Single Lens	4-T8 32W, 2-T12 75W	3500K-5000K	120/277V	4500-12000	35/68/95	080083174423	DLC Pending

SNX Series

STRIPLIGHT

- Contemporary single frosted radial lens LED striplight
- Replaces two or four lamp fluorescents up to 150W
- 3 field-selectable CCT: 3500K, 4000K, 5000K
- 3 field-selectable lumens: Low, Medium or High settings
- Single or continuous row via surface or suspended mount



Catalog Number	Description	Replaces Up To	Selectable CCT	Voltage	Selectable Lumens	Watts	UPC	DLC Product ID
4SNX-SL3-LW-UNV-CC83-CD1-U	4' Single Lens	2-T8 32W, 1-T5H0 54W	3500K-5000K	120-277V	2000-6100	17/33/51	080083265107	DLC Pending
8SNX-SL3-LW-UNV-CC83-CD2-U	8' Single Lens	4-T8 32W, 2-T12 75W	3500K-5000K	120-277V	4100-12000	34/67/101	080083265114	DLC Pending

METALUX STRIPLIGHT/WRAP

ST | ST2 Series STRIPLIGHT

- Full-length LED striplight ideal for replacing lamp fluorescent strips
- Superior performance with lumens up to 9200 and 115 lumens per watt
- 3 field-selectable CCT options available: 3500K, 4000K, 5000K; 80 CRI
- Continuous row mount aligner included to add-on length as needed
- Low voltage 0-10V dimming to 10%



Catalog Number	Description	Replaces Up To	Selectable CCT	Voltage	Lumens	Watts	UPC	DLC Product ID
2ST2L20SC3	2' Dual Lens, Dimming	2-T8 17W	3500K-5000K	120/277V	2,258	19	080083241569	S-UQ028D
4ST2L40SC3	4' Dual Lens, Dimming	2-T8 32W, 1-T5HO 54W	3500K-5000K	120/277V	4,653	40	080083241583	S-TSP41D
8ST2L80SC3	8' Dual Lens, Dimming	4-T8 32W, 2-T12 75W	3500K-5000K	120/277V	9,060	78	080083242207	S-5J2ZA0

NWS Series WRAP

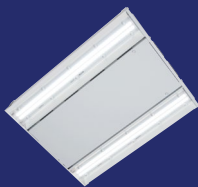
- Ideal for replacing two or three lamp fluorescents up to 96W
- 3 field-selectable CCT: 3500K, 4000K, 5000K
- 3 field-selectable lumens: 3800, 4300, 5000
- Surface (wall or ceiling) mount via junction box or direct to surface UNV 0-10V dimming to 10%



Catalog Number	Description	Replaces Up To	Selectable CCT	Voltage	Selectable Lumens	Watts	UPC	DLC Product ID
4NWS3C3-UNV	4' Wrap, Dimming	3-T8 32W	3500K-5000K	120/277V	3800-5000	28/32/39	080083257522	DLC Pending



METALUX INDUSTRIAL



High Bay
p. 27

METALUX

Industrial LED Lighting

Metalux Industrial offers a selection of economical and energy-efficient high-bay and vaportite lighting solutions designed for a wide variety of applications.

- **Affordable.** Economical, cost-saving solutions.
- **Heavy-Duty.** Rugged construction and durability.
- **Adaptable.** Designed for various mounting heights.
- **Refined Optics.** Delivers uniform illumination.



Scan to browse Metalux
Industrial videos



METALUX HIGH BAY

VHB Series HIGH BAY

- Designed for a wide variety of applications and mounting heights
- Precision designed optics; High impact polycarbonate optical LED lens
- Compact, lightweight design for ease of installation
- Solution for spaces utilizing traditional linear fluorescent and HID high bay
- Ideal for industrial, commercial, manufacturing and gymnasium applications

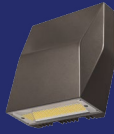


Catalog Number	Description	Replaces Up To	CCT	Voltage	Selectable Lumens	Watts	UPC	DLC Product ID
VHB-1215-W-UNV-L840-CD-U	Wide Distr.	4-T8, 3-T5HO, 175W MH	4000K	120/277V	12,000-15,000	110	080083192304	PJHJOBPH
VHB-1215-W-UNV-L850-CD-U	Wide Distr.	4-T8, 3-T5HO, 175W MH	5000K	120/277V	12,000-15,000	110	080083192311	PQX68N7B
VHB-1824-W-UNV-L840-CD-U	Wide Distr.	4-T5HO, 6-T8 320W MH, 6-T5HO, 8-T8, 400W MH	4000K	120/277V	18,000-24,000	158	080083192328	PKWWO6XP
VHB-1824-W-UNV-L850-CD-U	Wide Distr.	4-T5HO, 6-T8 320W MH, 6-T5HO, 8-T8, 400W MH	5000K	120/277V	18,000-24,000	158	080083192335	PMKN6560
VHB-1824-N-UNV-L840-CD-U	Narrow Distr.	4-T5HO, 6-T8 320W MH, 6-T5HO, 8-T8, 400W MH	4000K	120/277V	18,000-24,000	158	080083194834	P3BAS5NV, P9EQ8NS7
VHB-1824-N-UNV-L850-CD-U	Narrow Distr.	4-T5HO, 6-T8 320W MH, 6-T5HO, 8-T8, 400W MH	5000K	120/277V	18,000-24,000	158	080083194841	PHU0FDKN, PHFFBWZM

Note: DLC Premium items are noted in bold.



LUMARK OUTDOOR



Wall Mount
p. 29-30



Ceiling Mount
p. 30



Area/Site
p. 31

LUMARK

Outdoor LED Luminaires

Lumark offers a wide selection of high-quality product solutions that provide market-leading ease of installation, superior area safety, and maximum energy savings in commercial and industrial spaces.

- **Easy Installation.** Versatile mounting options.
- **Superior Area Safety.** High-performing illumination.
- **Maximum Durability.** Built-to-last construction.



Scan to browse Lumark
Outdoor videos



LUMARK WALL MOUNT

AXC Axcent Luminaire WALL MOUNT

- Full cutoff and refractive LED lens models available in small or large
- Hook-N-Lock mechanism for quick, easy installation
- Die-cast aluminum construction with energy-efficient illumination
- Gasketed housing and sealed optical compartment making impervious to contaminants
- Ideal for pathway illumination and floodlighting applications



Catalog Number	Description	Finish	Replaces Up To	CCT	Voltage	Lumens	Watts	UPC	DLC Product ID
AXCS1A	Small Full Cutoff	Carbon Bronze	70W HID	4000K	120-277V	1,806	14	080083887965	PM2QBCKN, P6C9PUNY
AXCS2A	Small Full Cutoff	Carbon Bronze	100W HID	4000K	120-277V	2,561	21	080083887989	P7QPNUH6, PSBR7D60
AXCS3A	Small Full Cutoff	Carbon Bronze	150W HID	4000K	120-277V	3,537	27	080083888009	PVRJ2Q9Q, PTFQ0X79
AXCS4A	Small Full Cutoff	Carbon Bronze	250W HID	4000K	120-277V	5,520	44	080083888023	P116J9UO, POMJ1T2K
AXCS4ARL	Small Refractive Lens	Carbon Bronze	250W HID	4000K	120-277V	5,858	44	080083888030	PPXSGJ9K, PCFKRFBV
AXCS5A	Small Full Cutoff	Carbon Bronze	320W HID	4000K	120-277V	6,300	52	080083888047	PHKFITX6, PCPDYSZM
AXCL6A	Large Full Cutoff	Carbon Bronze	320W HID	4000K	120-277V	7,594	56	080083811564	PFN4XXRX
AXCL6ARL	Large Refractive Lens	Carbon Bronze	320W HID	4000K	120-277V	7,809	56	080083811649	PZXNXUOI
AXCL8A	Large Full Cutoff	Carbon Bronze	400W HID	4000K	120-277V	9,696	72	080083811588	PG4TJNY3
AXCL8ARL	Large Refractive Lens	Carbon Bronze	400W HID	4000K	120-277V	9,970	72	080083811663	PBA84MB6
AXCL10A	Large Full Cutoff	Carbon Bronze	400W HID	4000K	120-277V	13,283	102	080083811601	PEEEJWAF
AXCL12A	Large Full Cutoff	Carbon Bronze	450W HID	4000K	120-277V	16,823	123	080083811625	PD1N4D39

Note: DLC Premium items are noted in bold.

AXC Back Box Accessory

Catalog Number	Description	Finish	Replaces Up To	CCT	Voltage	Lumens	Watts	UPC
BB/AXC	Back Box	Carbon Bronze	N/A	N/A	N/A	N/A	N/A	080083160709
BB/AXC-PC	Back Box with Photocontrol	Carbon Bronze	N/A	N/A	N/A	N/A	N/A	080083160723

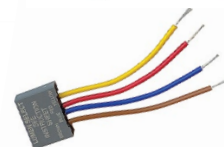
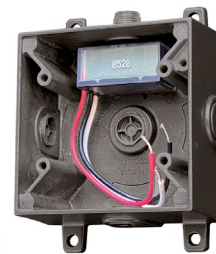
Features

Lumen Select pack allows installer to reduce the light output to 75 or 50%

Integrated photocontrol provides maximum energy savings while leveraging

Four 1/2" NPT conduit entry points for surface mounted conduit

Single die-cast aluminum back box to simultaneously accommodate Axcent Small and Large housings



LUMARK WALL MOUNT/CEILING MOUNT

WPM Wall Pack Luminaire

WALL MOUNT

- LED wall pack available with fixed output or selectable configurations
- Die-cast aluminum housing with hinged, removable die-cast aluminum door
- Heat and impact resistant borosilicate glass lens
- Energy and maintenance savings up to 89%
- Ideal for pathway illumination, building entrances, vehicle ramps, schools, tunnels, stairways and loading docks



Catalog Number	Description	Finish	Replaces Up To	Selectable CCT	Voltage	Selectable Lumens	Watts	UPC	DLC Product ID
WPMLED15S	Medium LED Wall Pack	Bronze	150W HID	3000K 4000K 5000K	120-347V	3,977-7,535	29-59	080083176144	PLAP4BWH9V52
WPMLED25S	Medium LED Wall Pack	Bronze	250W HID	3000K 4000K 5000K	120-347V	9,779-12,829	72-101	080083176168	PLCDOB65Z8EN

CLCS Canopy Luminaire

CEILING MOUNT

- LED canopy available with fixed output or selectable configurations
- 3-color selectable CCT: 3000K, 4000K, 5000K
- High-performance, energy-efficient illumination
- Energy and maintenance savings up to 86% versus HID solutions
- Ideal for new or existing spaces including bank, retail, drive-thru, covered sidewalks and hospital entryways



Catalog Number	Description	Finish	Replaces Up To	Selectable CCT	Voltage	Selectable Lumens	Watts	UPC	DLC Product ID
CLCS17S	Small LED Canopy	Bronze	175W HID	3000K-5000K	120-277V	5,323-7,939	39-56	080083160006	P5MUAJIY, P5S4B75K
CLCS17S-PC	Small LED Canopy	Bronze	175W HID	3000K-5000K	120-277V	5,323-7,939	39-56	080083159727	P5MUAJIY, P5S4B75K
CLCS40S	Large LED Canopy	Bronze	400W HID	3000K-5000K	120-277V	12,614-17,427	91-123	080083160020	PUT80LSK, PPEWK64B

LAS Luminaire

AREA/SITE

- Automatic dusk-to-dawn area lighting with included twistlock photocontrol
- 10-position, field-selectable lumens across 2 die-cast aluminum housing sizes
- Energy and maintenance savings up to 79% versus HID solutions up to 79%
- Slipfitter arm mounts horizontally or vertically for simple installation
- Ideal parking lots, walkways, building areas and other outdoor areas



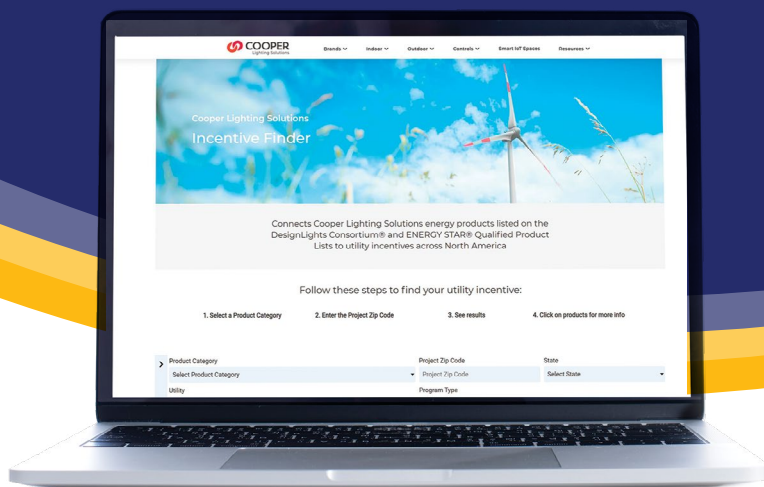
Catalog Number	Description	Finish	Replaces Up To	CCT	Voltage	Selectable Lumens	Watts	UPC	DLC Product ID
LAS45S-T3	T3 Distr., Adjustable Slipfitter Arm	Bronze	450W HID	4000K	120-277V	4,900 - 20,000	30-153	080083155804	P1T4HG08
LAS45S-T4	T4 Distr., Adjustable Slipfitter Arm	Bronze	450W HID	4000K	120-277V	4,900 - 20,000	30-153	080083155828	PJZTZ423
LAS45S-T5	T5 Distr., Adjustable Slipfitter Arm	Bronze	450W HID	4000K	120-277V	4,900 - 20,000	30-153	080083155842	PW39PQB3
LAS100S-T3	T3 Distr., Adjustable Slipfitter Arm	Bronze	1,000W HID	4000K	120-277V	8,200 - 34,000	48-251	080083155866	PP8AW4F5
LAS100S-T4	T4 Distr., Adjustable Slipfitter Arm	Bronze	1,000W HID	4000K	120-277V	8,200 - 34,000	48-251	080083155880	P0CHU9AS
LAS100S-T5	T5 Distr., Adjustable Slipfitter Arm	Bronze	1,000W HID	4000K	120-277V	8,200 - 34,000	48-251	080083155903	PMUFIF4F

Note: DLC Premium items are noted in bold.



Maximize Savings with Utility Rebates

Cooper Lighting Solutions Exclusive Utility Rebate Incentive Finder



cooperlighting.com/marketpro

By using our online Incentive Finder, you can search by state and zip code to find local rebates that save money and add value for your customers. For your convenience, we've identified and included the ENERGY STAR® and DLC® product ID numbers within the MarketPro catalog.

Cooper Lighting Solutions has the largest portfolio of **ENERGY STAR®**-certified recessed downlights and **DesignLights® Consortium (DLC)** - qualified commercial luminaires, meeting high-quality, energy-efficient standards.

Code Compliance

The largest verified list of high performing LED lighting products.

<http://www.designlights.org/search/>

DLC Premium items are denoted in bold



UPC	DLC Product ID
080083811588	PG4TJNY3

<http://www.energystar.gov/productfinder/>



UPC	ENERGY STAR ID
080083848164	2322242

www.energy.ca.gov



Look for the DLC, ENERGY STAR and T20 icons that identifies qualified products.

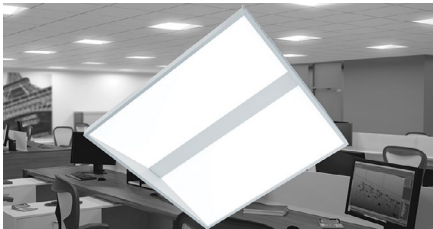
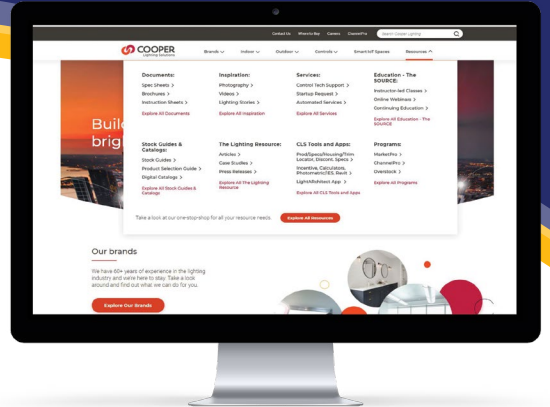
Resource Center

One-stop shop for all your resource needs.

Cooperlighting.com > Resources

Literature, product photography, videos, case studies, logos & more!

Visit Cooperlighting.com and click on the Resources tab. The Resource Center is a central location of supportive product selection tools, inspirational images and downloadable digital resources.



Product Resources

- Brochures & Guides
- Spec sheets
- Installation sheets and guides



Inspiration

- Application Photography
- Product Photography & Videos
- Case studies
- Logos



Tools

- Energy Incentive Finder
- Photometric IES
- Revit Models
- Calculators & Audit Tools



Programs

- MarketPro
- Rapid Response
- Quick Ship



Education

- Instructor-led Classes
- Free online courses
- Continuing education

Looking for More Expanded Selections?

Expanded selection now available with customizable lighting products.

RAPID RESPONSE & QUICK SHIP PROGRAMS

Cooperlighting.com > Solutions

Rapid Response

Rapid Response offers popular stocked Metalux and HALO Commercial products, delivered to you when you need them.

- ▶ Customizable Metalux and HALO Commercial products
- ▶ Options include: sensors, battery packs, flex, modular wiring, Chicago rated products

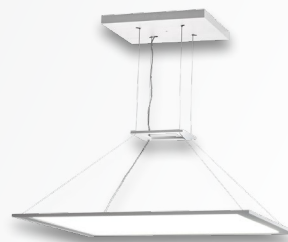


> [Explore Rapid Response](#)



Quick Ship is your solution for fast-moving construction projects that require customizable architectural lighting products.

- ▶ Customizable Corelite, Neo-Ray and Shaper products
- ▶ Options include: sensors and battery packs



> [Explore Quick Ship](#)

Source Lighting Education Center

The benchmark for lighting educational facilities and programs for 30 years.

► Expand Your Knowledge!

The SOURCE is an excellent resource for training and professional development. As the industry's leading lighting educational facility, the SOURCE offers numerous online and instructor-led courses and workshops for those wanting to expand their lighting and controls knowledge.

cooperlighting.com/source

- Instructor-led Classes
- Free Online Courses
- Continuing Education
- reSource Articles



Learn. Grow. Visualize.

Explore our one-stop-shop for Cooper Lighting Solutions digital tools.

[Youtube.com > Cooper Lighting Solutions > Videos](https://www.youtube.com/CooperLightingSolutions)

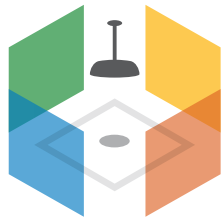
► Explore Our Video Library!

Visit Cooper Lighting Solutions' YouTube page to explore our ever-expanding product video library! Everything you need to know about our innovative product offering can be found here. Get the facts on newly introduced solutions, discover product benefits and watch videos on how to install them. Explore our curated playlists to easily find informative videos by industry-leading brand, market and product category.



Dream. Experiment. Plan.

A more powerful way to design.

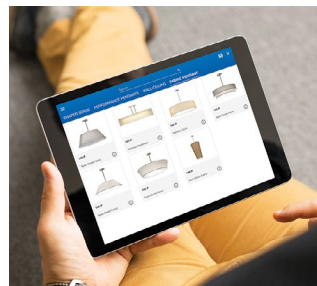
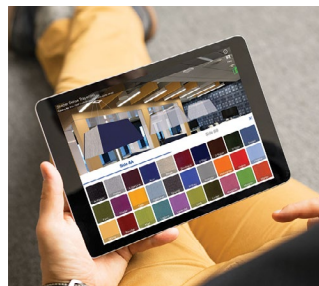


Light ARchitect™

► See your space in a new light with augmented reality

We've taken the guesswork out of lighting design with Light ARchitect, an augmented reality mobile app that lets you instantly visualize light fixtures in your space.

- Browse state-of-the-art light LED fixtures and choose the ones you want to see in your space
- Adjust the fixture's finish, lumen output, mounting height, color temperature and more
- Virtually turn lights on to get the full effect
- Take screenshots to share and email to clients or colleagues



cooperlighting.com/lightarchitect

Light ARchitect is free and available for iOS and Android devices

Download **Light ARchitect**



SELECTABLE LIGHTING

PRODUCT GUIDE

RESIDENTIAL | COMMERCIAL | INDUSTRIAL

Lighting Product Lines

Ametrix
AtLite
Corelite
Ephesus
Fail-Safe
Halo
Halo Commercial
Invue
io
Iris
Lumark
Lumière
McGraw-Edison
Metalux
MWS
Neo-Ray
Portfolio
RSA
Shaper
Streetworks
Sure-Lites

Controls Product Lines

Fifth Light Technology
Greengate
iLight (International Only)
iLumin
Zero 88

Connected Lighting Systems

Distributed Low-Voltage Power
HALO Home
iLumin Plus
LumaWatt Pro
WaveLinx
Trellix



Cooper Lighting Solutions
1121 Highway 74 South
Peachtree City, GA 30269
P: 770-486-4800
www.cooperlighting.com
Canada Sales
5925 McLaughlin Road
Mississauga, Ontario L5R 1B8
P: 905-501-3000
F: 905-501-3172

© 2022 Cooper Lighting Solutions
All Rights Reserved
Printed in USA
Publication No. CA525744
July 2022

Cooper Lighting Solutions is a registered trademark.

All other trademarks are property of their respective owners.

Product availability, specifications, and compliances are subject to change without notice.