



## **Recycle Disassemble Instruction (Dismantled Information)**

**Requirements according to ANNEX VII of DIRECTIVE 2012/19/EU  
on waste electrical and electronic equipment (WEEE)**

### **Materials and components with hazardous content**

LCDs may contain hazardous substances like Pb and BFRs which are covered by exemptions under the RoHS directive. However, the majority is present in the printed circuit boards assembly. In order to reduce emissions as much as possible, a complete disposal of the old appliance is required. This treatment may only be performed in authorized handling plants.








**Product Name:** LCD Monitor

**Model No.:** XL2546K





## Disassembly Tools

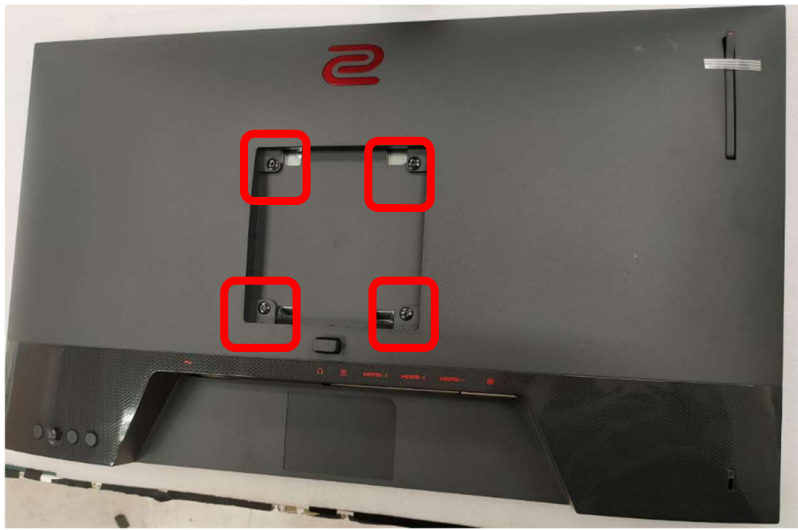
Tool	picture
Philips Screwdriver for M3 Screw	 A Philips screwdriver with a red handle and a silver shaft, lying horizontally on a light brown wooden surface.
Nosed Pliers	 A pair of red-handled nose pliers with long, thin jaws, lying horizontally on a light brown wooden surface.
Diagonal Cutting Pliers	 A pair of red-handled diagonal cutting pliers with short, thick jaws, lying horizontally on a light brown wooden surface.
Slotted screwdriver	 A slotted screwdriver with a green handle and a silver shaft, lying horizontally on a light brown wooden surface.
Six Point Sockets	 A six-point socket screwdriver with a yellow handle and a silver shaft, lying horizontally on a light brown wooden surface.
Philips Screwdriver for M2.5 Screw	 A Philips screwdriver with a red handle and a silver shaft, lying horizontally on a light brown wooden surface.
Knife	 A folding knife with a silver handle and a silver blade, lying horizontally on a light brown wooden surface.



## Disassembly process



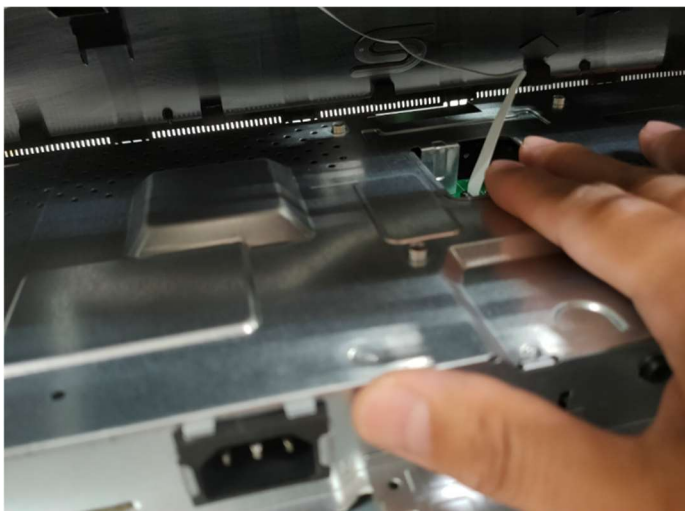
Disassembly  
Stand



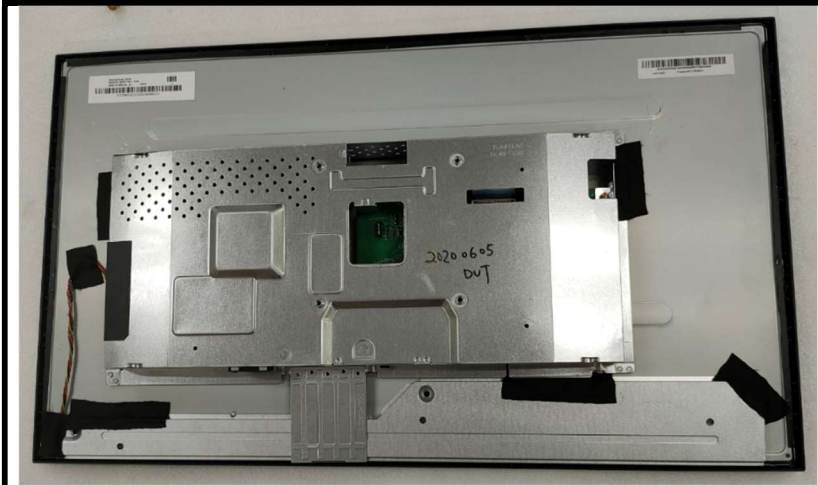
**Unscrew**



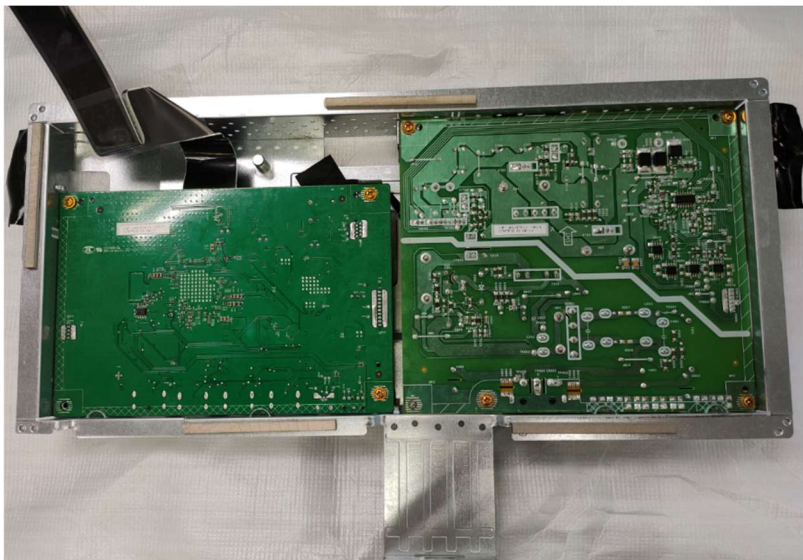
**Disassembly  
RC**



**Disassembly  
Ctrl\_BD  
Cable**



**Disassembly  
Internal  
Remove All  
Tapes**



**Disassembly  
all PCB.**



**Remove  
Panel**

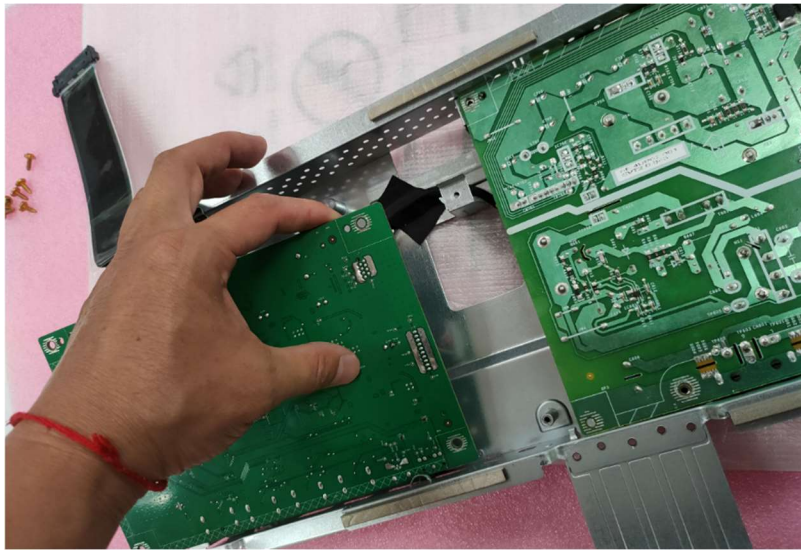




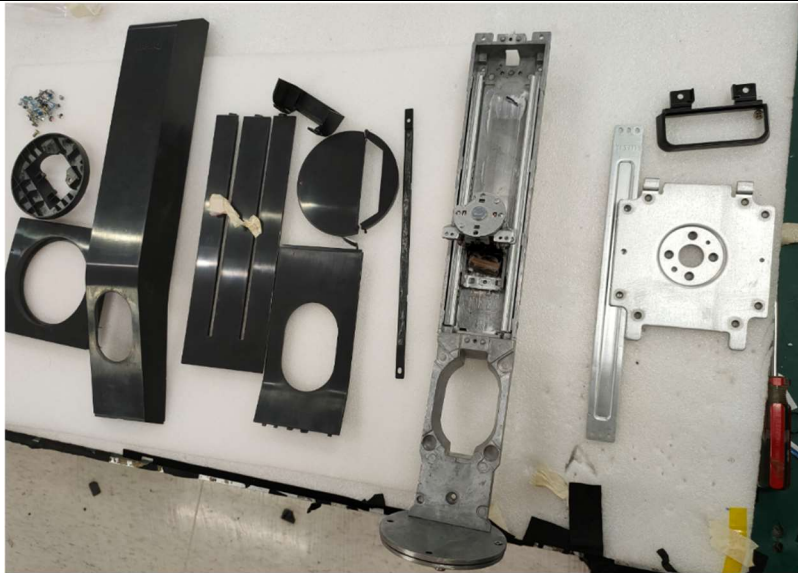
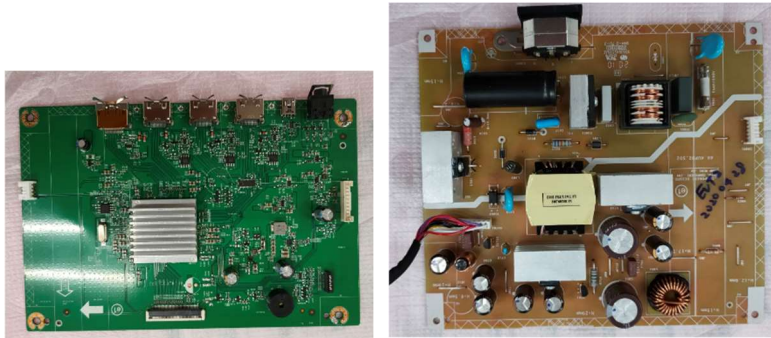
**Disassembly  
RC  
Control BD**



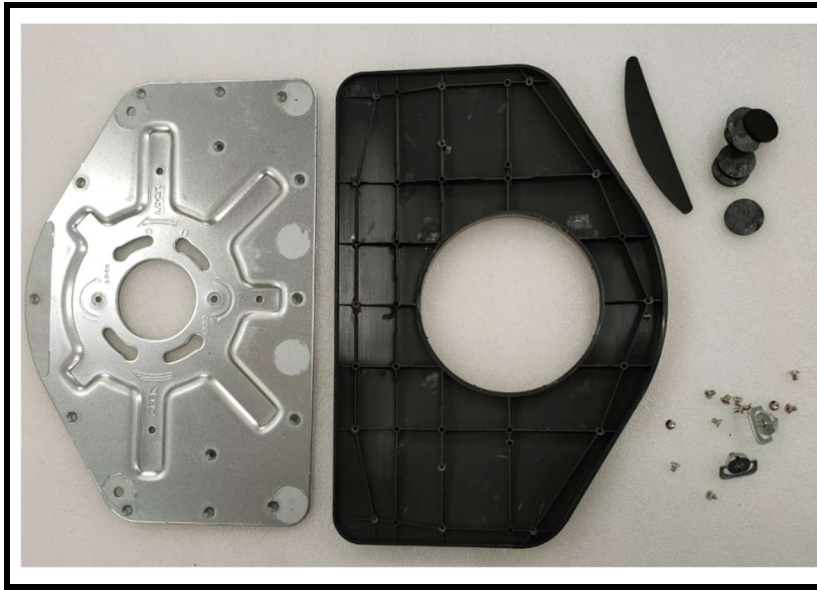
**Disassembly  
RC  
Hook  
Headphone**



**Disassembly  
all PCB.**



**Disassembly  
Column**



## Disassembly BASE

### Disassembly Time

Total time: 30 minutes