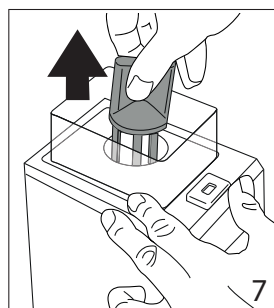
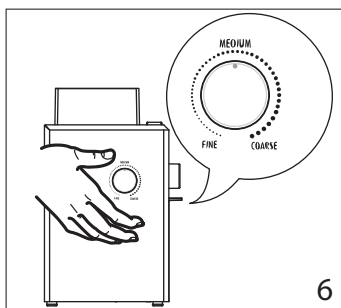
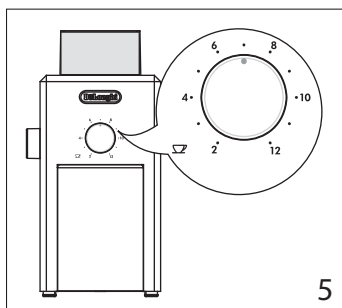
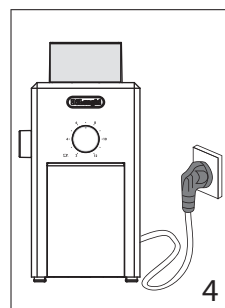
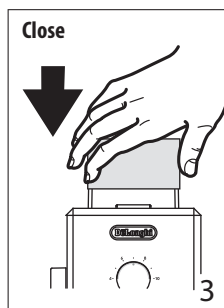
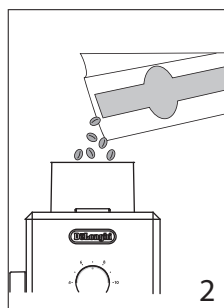
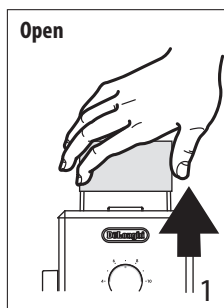
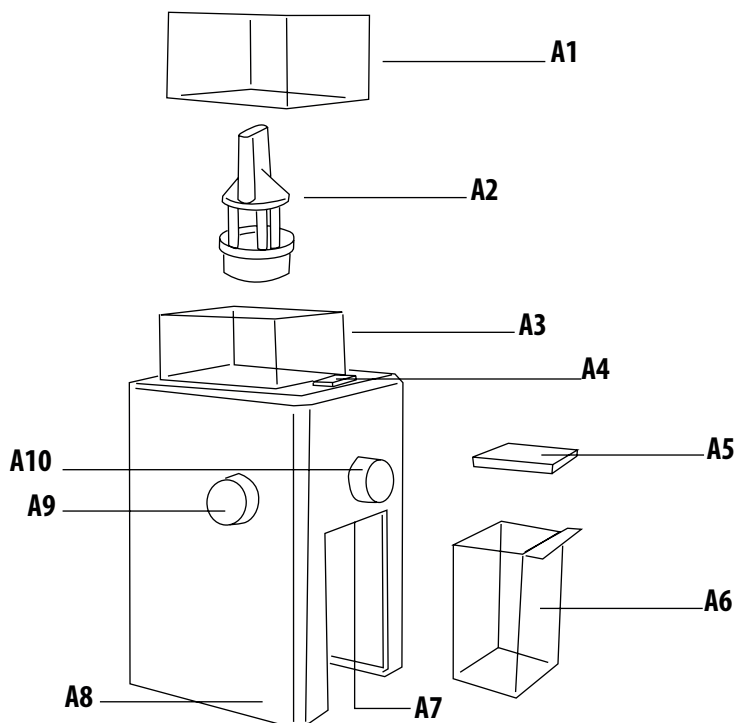

KG 79-89

COFFEE GRINDER
Instructions for use



DeLonghi



Before using the appliance, be sure to read the accompanying safety notes.

DESCRIPTION

(page 2 - A)

- A1. Coffee container lid
- A2. Removable burr
- A3. Coffee container
- A4. ON/OFF button
- A5. Ground coffee container lid
- A6. Ground coffee container
- A7. Compartment for ground coffee container
- A8. Appliance body
- A9. Grinding fineness level selection dial
- A10. Selection dial for number of cups

CHECKING THE APPLIANCE

After removing the packaging, make sure the product is complete and undamaged and that all accessories are present. Do not use the appliance if it is visibly damaged. Contact De'Longhi Customer Services.

CONNECTING THE APPLIANCE

Danger!

Check that the mains power supply voltage corresponds to the value indicated on the rating plate on the bottom of the appliance.

Connect the appliance to a correctly installed socket with a minimum current rating of 10A only. If the power socket does not match the plug on the appliance, have the socket replaced with a suitable type by a qualified professional.

BEFORE USE

Before using the coffee grinder, clean the outer housing and the container for loading coffee beans with a clean damp cloth.

Wash the lid of the container, the ground coffee container and its lid in hot soapy water (40°C) for at least 30 minutes, then rinse and dry.

Important:

The grinder should not be washed and must always be kept dry. Clean the grinder with a bristle brush.

USING THE APPLIANCE

- Place the appliance on a flat surface.
- Place the ground coffee container (A6) with its lid (A5) in the compartment (A7).
- Remove the lid of the container for loading coffee beans (Fig. 1)

- Pour the desired amount of coffee beans into the container (Fig. 2): the coffee grinder grinds about 1 tablespoon of coffee per cup selected. Do not fill above the MAX level marked on the container.
- Replace the lid and make sure it is positioned correctly, pushing it firmly into place (Fig. 3).
If the lid is not correctly positioned, the coffee grinder does not work.
- Plug the appliance into the mains socket (fig. 4).
- Set the dial (A10) to the quantity of coffee corresponding to the number of cups for which you want to grind the beans (Fig. 5). Use this ratio as a rough guide only, since the amount will vary according to the taste, type and roasting of coffee beans as well as the fineness of grinding selected.
- Select the grind of coffee by adjusting the dial to the type of coffee desired (Fig. 6).
- Press the ON/OFF button (A4) to operate the coffee grinder. Once the previously selected amount of coffee is reached, the appliance will stop automatically.
- If you want to stop the appliance before grinding is finished, press the ON/OFF button.
- Remove the ground coffee container, gently tap the container, remove the lid and pour the ground coffee into the filter of the coffee machine.

TIPS

- Always keep the lid of the coffee beans container tightly closed to retain all their flavour and aroma.
- Grind only the amount of coffee needed at the time.
- Never overfill the coffee beans container. As a rough guide, use a tablespoon of beans per cup (e.g. 4 tablespoons of beans for 4 cups of coffee). As you use the grinder, you will of course discover the optimum quantities for your own personal taste.
- Use the dial to select the grinding fineness (Fig 6) to adjust the grinding according to the type of coffee used. "COARSE" grinding is ideal for percolators; "MEDIUM" grinding is ideal for drip and moka; "FINE" grinding is ideal for espresso machines.
- If you grinded 12 cups of coffee, wait at least 5 minutes before using the coffee grinder again to avoid the appliance overheating.
- To ensure good quality in terms of coffee freshness, always clean the appliance after each use.

CLEANING

Danger!

Before performing any cleaning operations, the grinder must be turned off and disconnected from the mains power supply. Never immerse the coffee grinder in water.

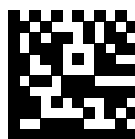
- Unplug from the mains.
- Wash the lid with water and mild detergent. Rinse thoroughly and dry.
- To clean the burr, remove it (A2) by setting the grinding selection dial (Fig. 6) to the “FINE” position, then taking hold of the top of the appliance’s grinder with your fingers and turn it clockwise, then pull vertically to remove it (Fig. 7).
- Carefully clean the inside of the coffee beans container (A3) with a small brush.
- To reposition the upper burr, set the grinding selection dial (Fig. 6) to the “COARSE” position, insert the burr and turn it in an anti-clockwise direction until locked.
- Carefully clean the pre- ground coffee container, its lid and the body of the appliance with a damp cloth, making sure that there is no residual coffee in the ground coffee container.

TECHNICAL DATA

Voltage:	220-240V ~50-60 Hz
Absorbed power:.....	150 W
Weight:	
KG79	1,6 Kg
KG89	1,8 Kg

TROUBLESHOOTING

The appliance does not work.	Make sure the plug is properly inserted in the socket and that the socket is working properly.
	The lid of the coffee beans container is not positioned correctly.
	The ground coffee container or its lid are not properly positioned.
The appliance stops during operation.	The appliance is overheating. The motor thermal fuse has intervened. Contact the authorised Customer Services.
	The maximum capacity of the coffee beans container or ground coffee container has been exceeded
The grinding selector dial does not work.	Check that the upper burr is correctly positioned.



5717748099_00_1024