



Hey, congrats on your new Tile tracker.

Let's get it set up so you can find your thing whatever
and wherever it may be.

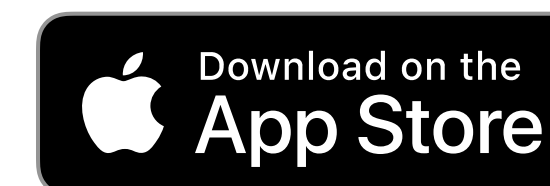


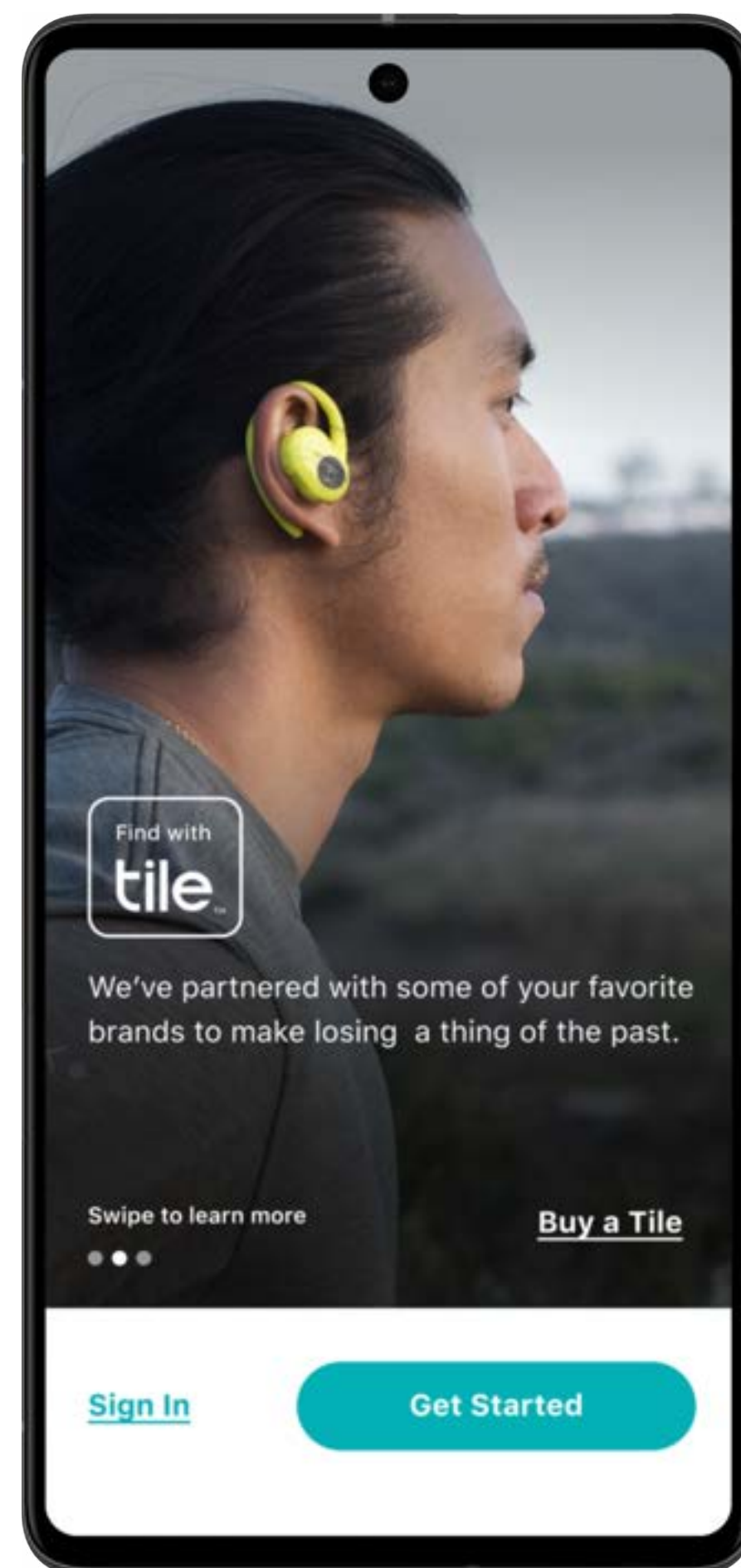
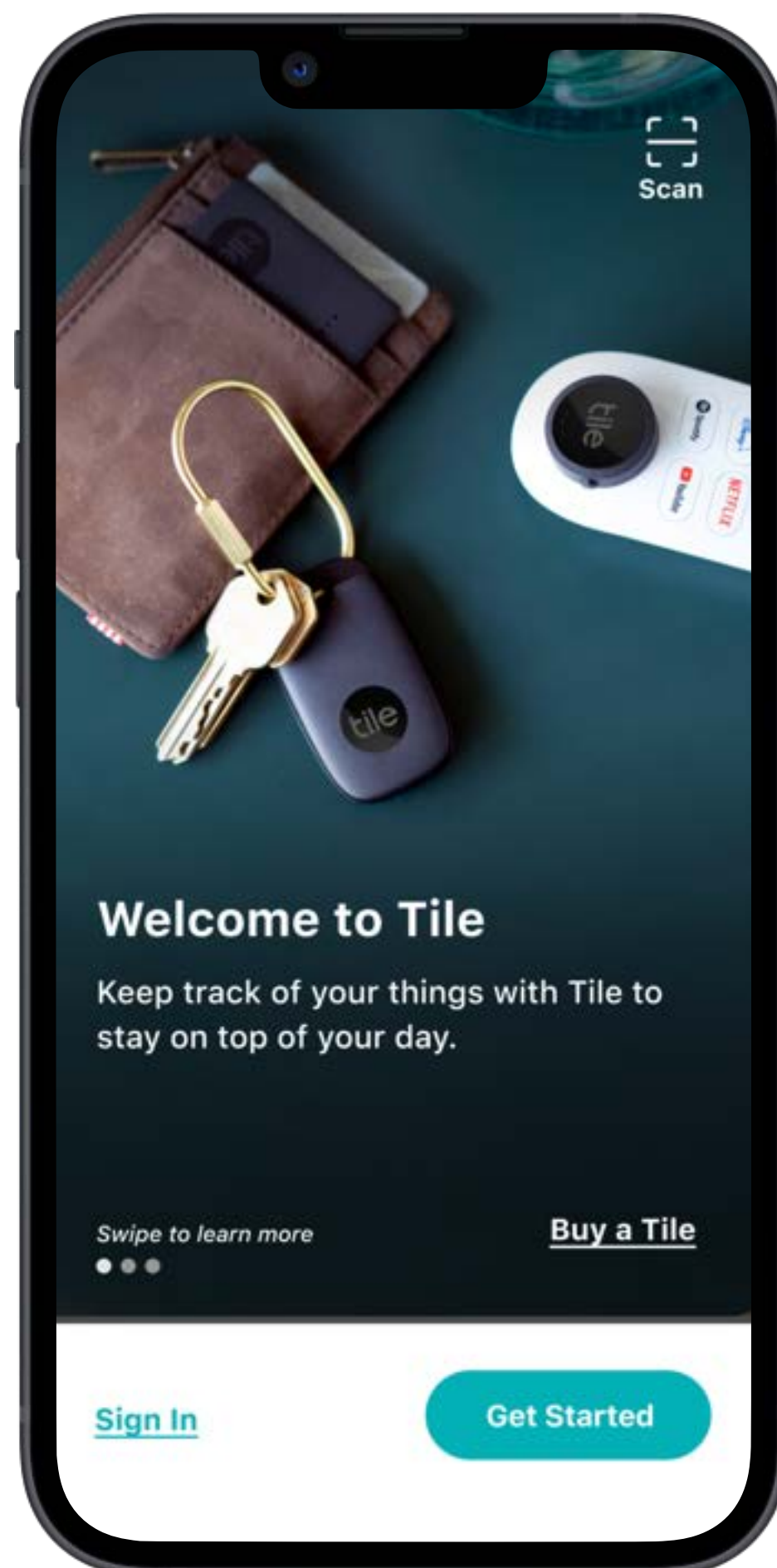
1

Attach your Tile to your thing — keys, wallet, luggage, phone, laptop, or even your pets depending on the type of Tile tracker.

2

Download the Tile app for iOS or Android.

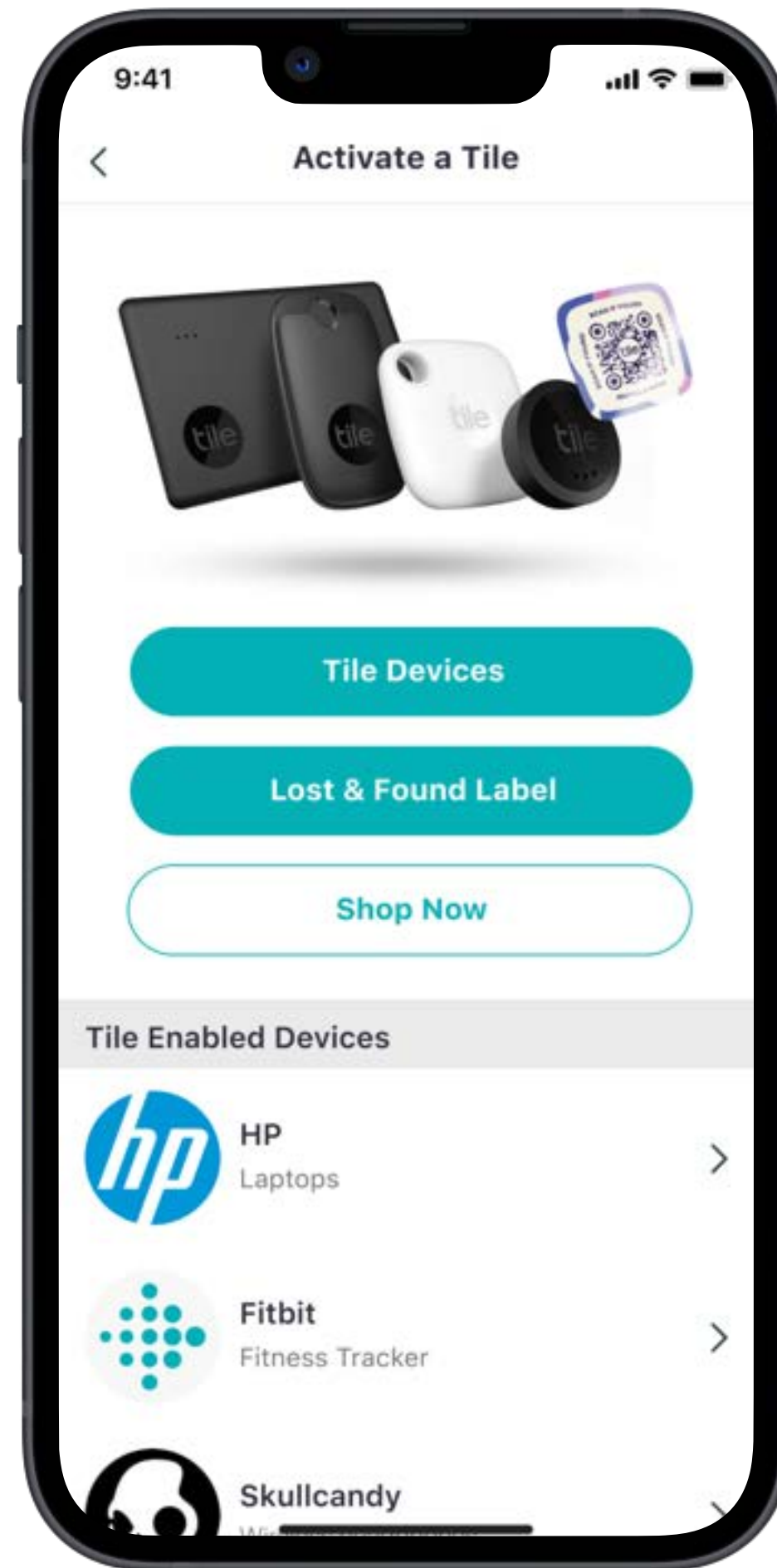




3

Once you're in the app, tap on "Get Started" to activate your tracker.

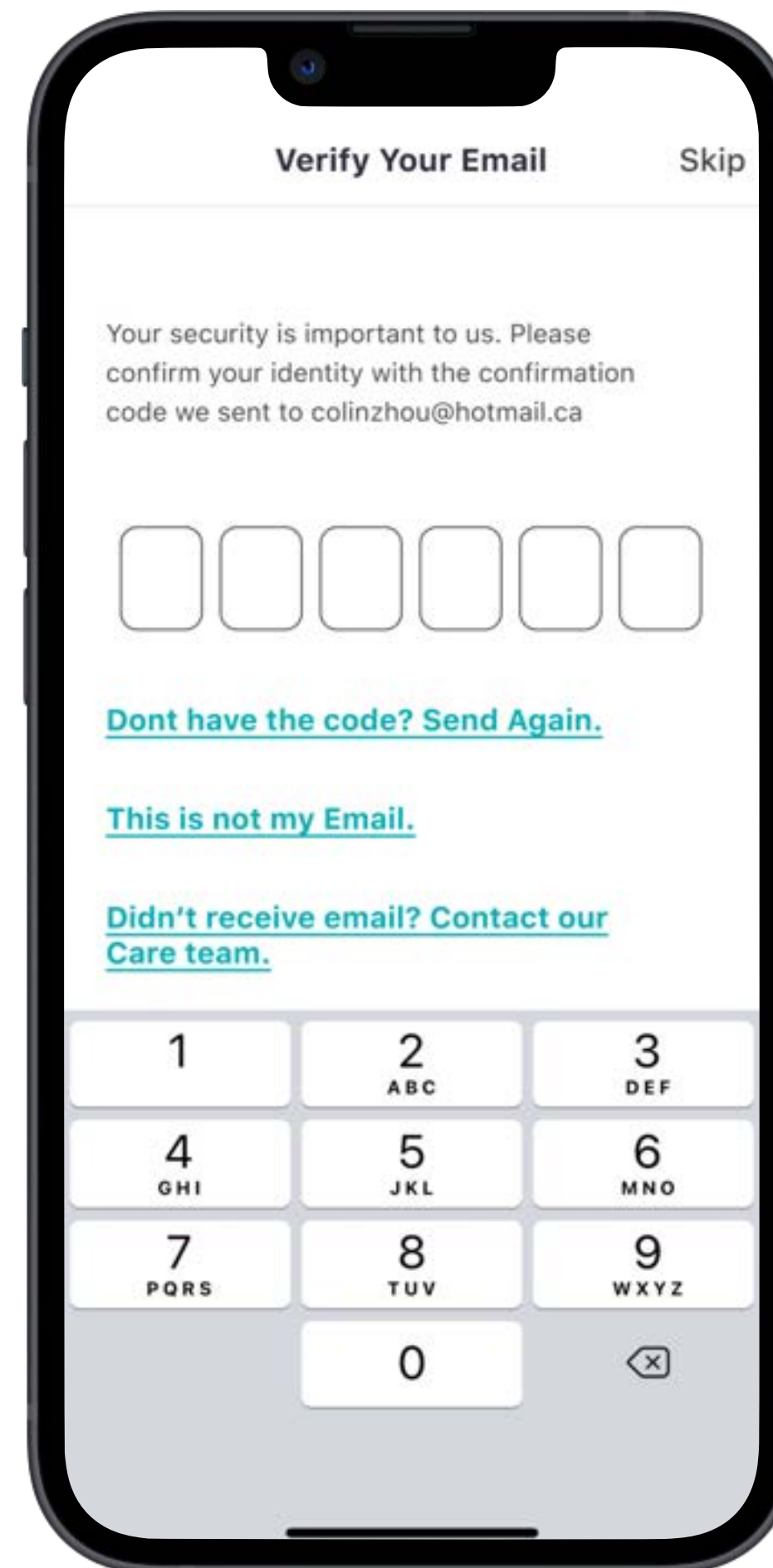
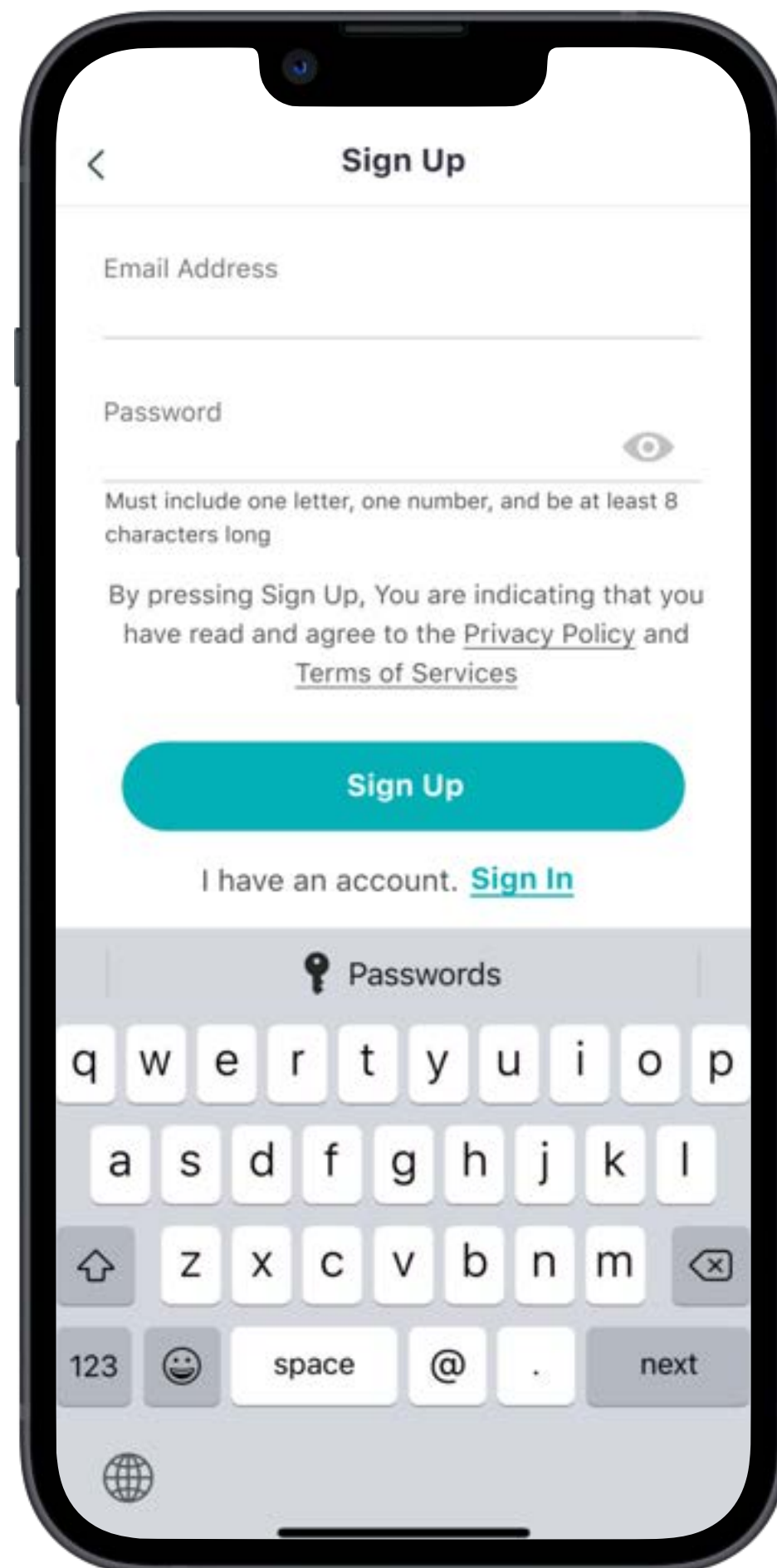
Android users may see slightly different screens.



4

Next, tap on "Tile Devices."

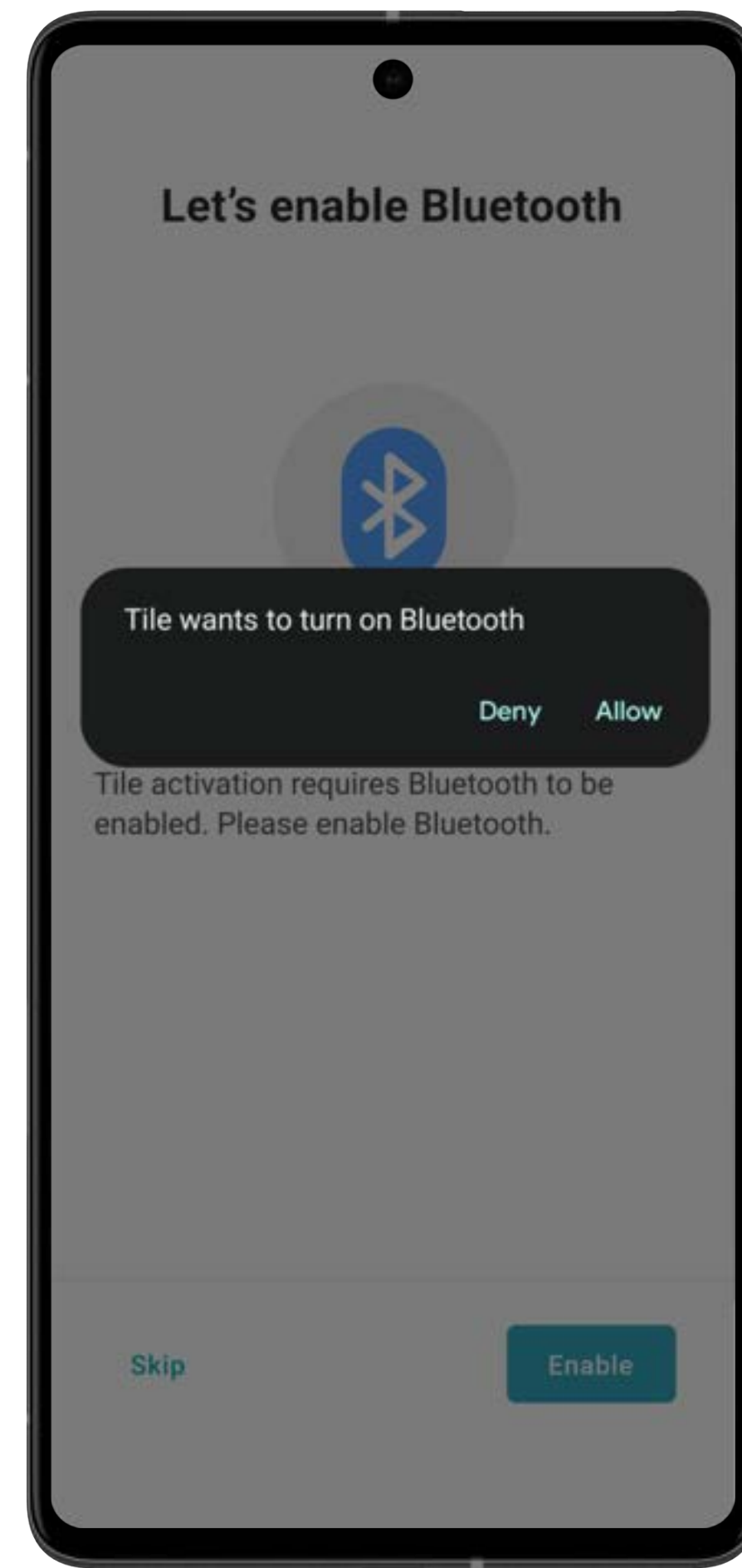
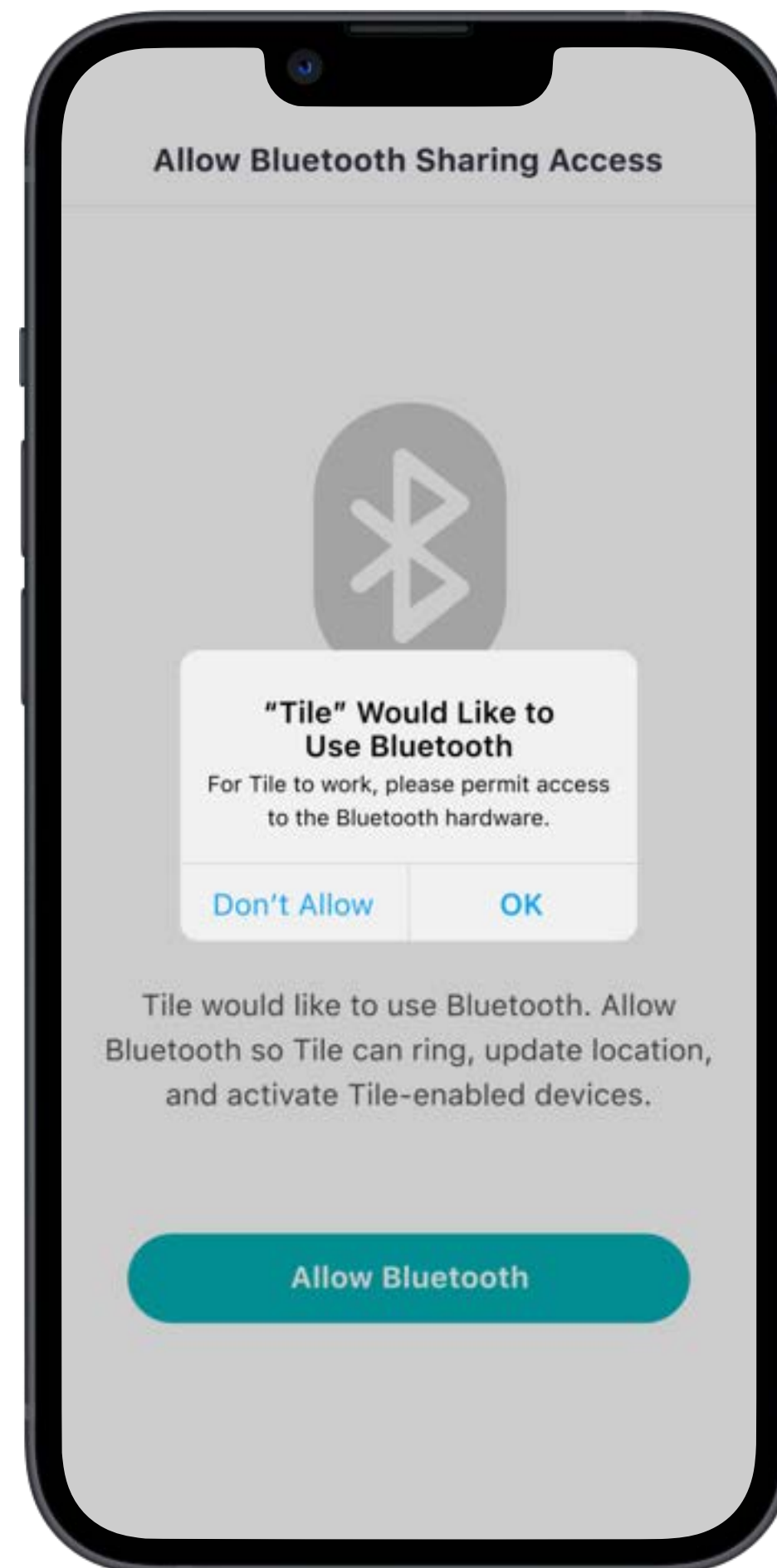
Android users may see slightly different screens.



5

Create your account by filling out all your info, then verify your new account.

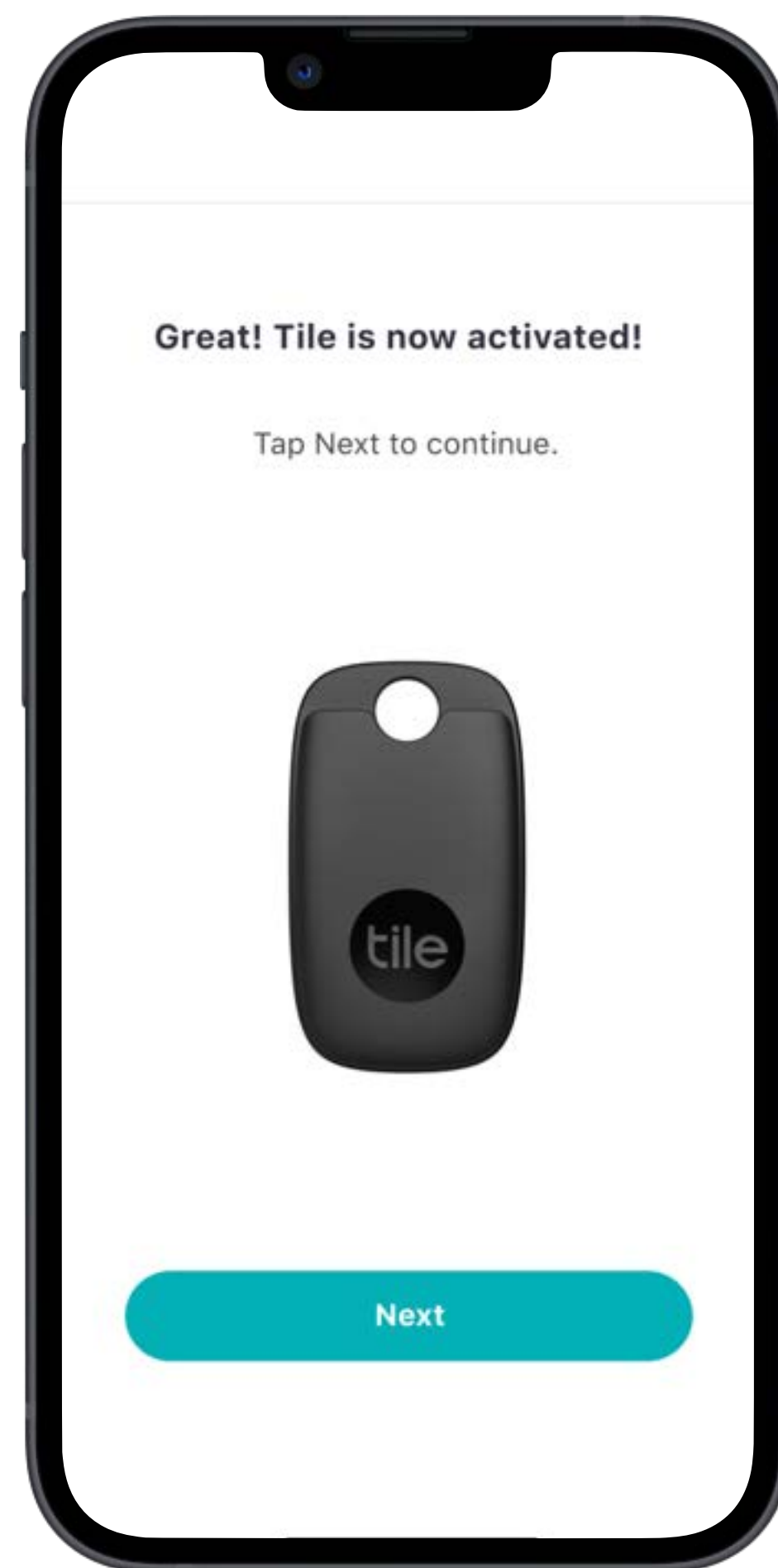
Android users may see slightly different screens.



6

Tap "OK" to allow Tile to use Bluetooth. Enabling your **Bluetooth Sharing Access** will start the activation process for your Tile tracker, ring Tiles within range, and update the location.

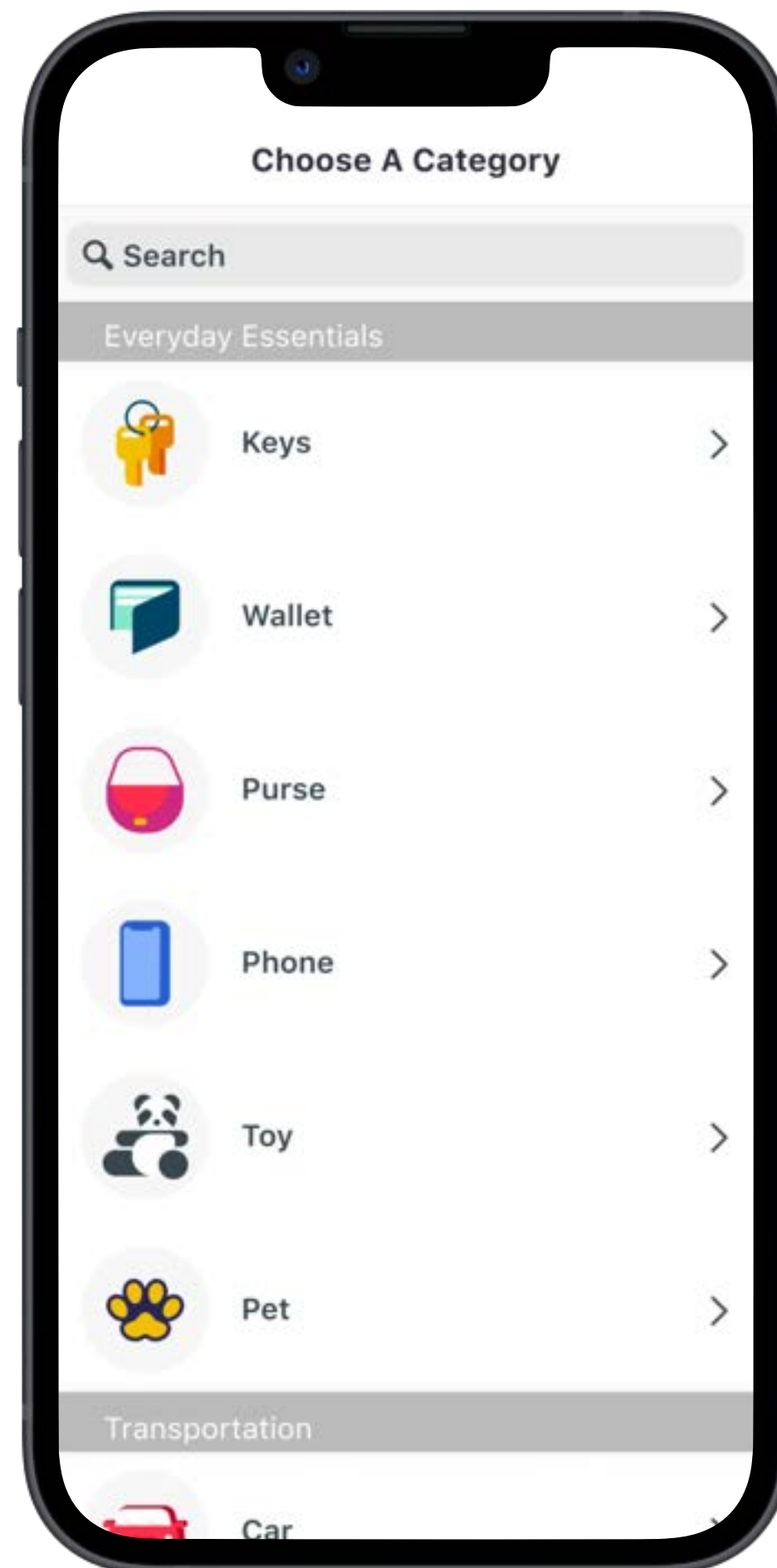
Android users may see slightly different screens.



7

Now you can press the button right on your Tile tracker — this will start the activation process. Once you hear it ring, tap “Next” in the app.

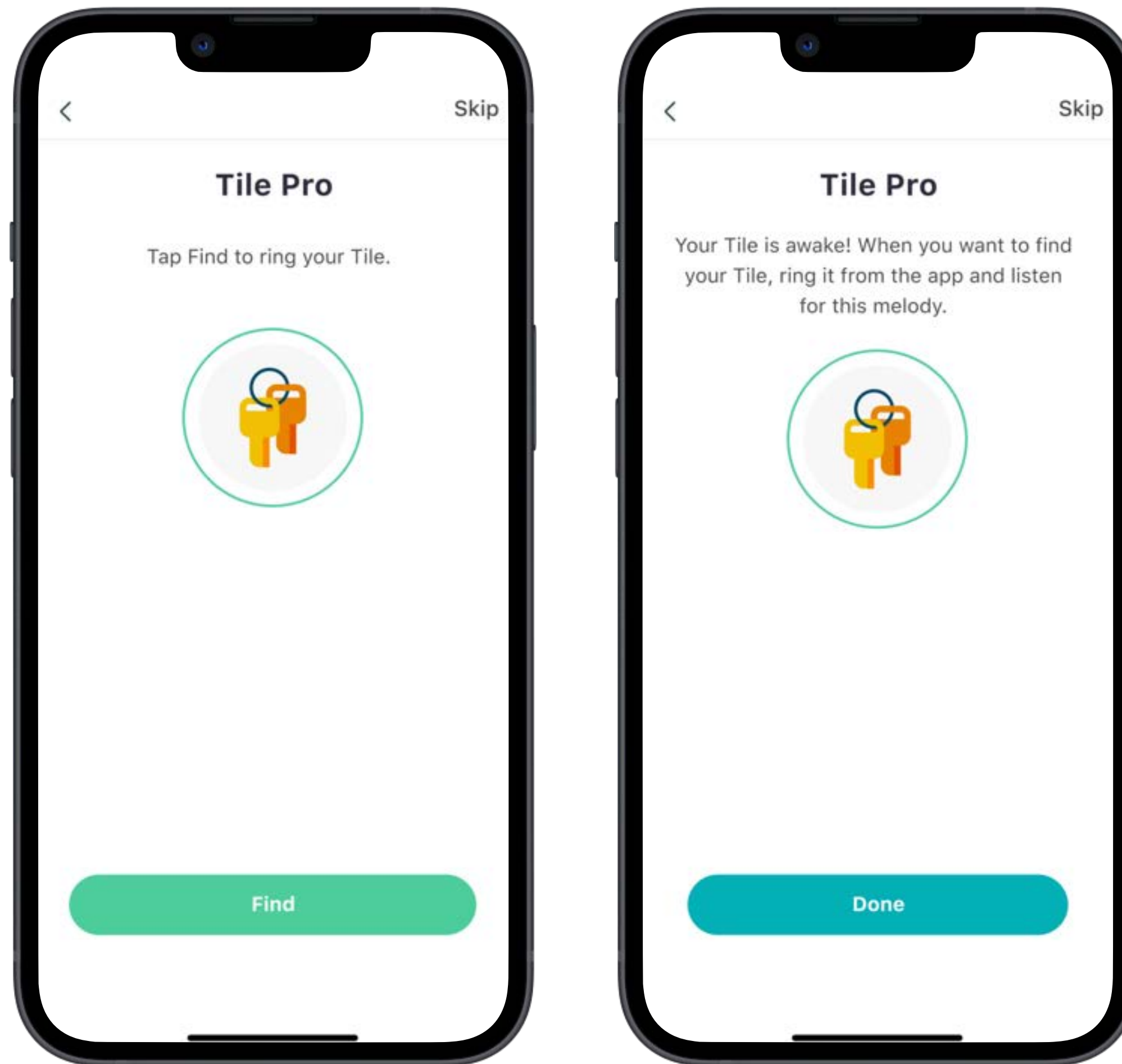
Android users may see slightly different screens.



8

Choose the category for the thing you're attaching your Tile to.

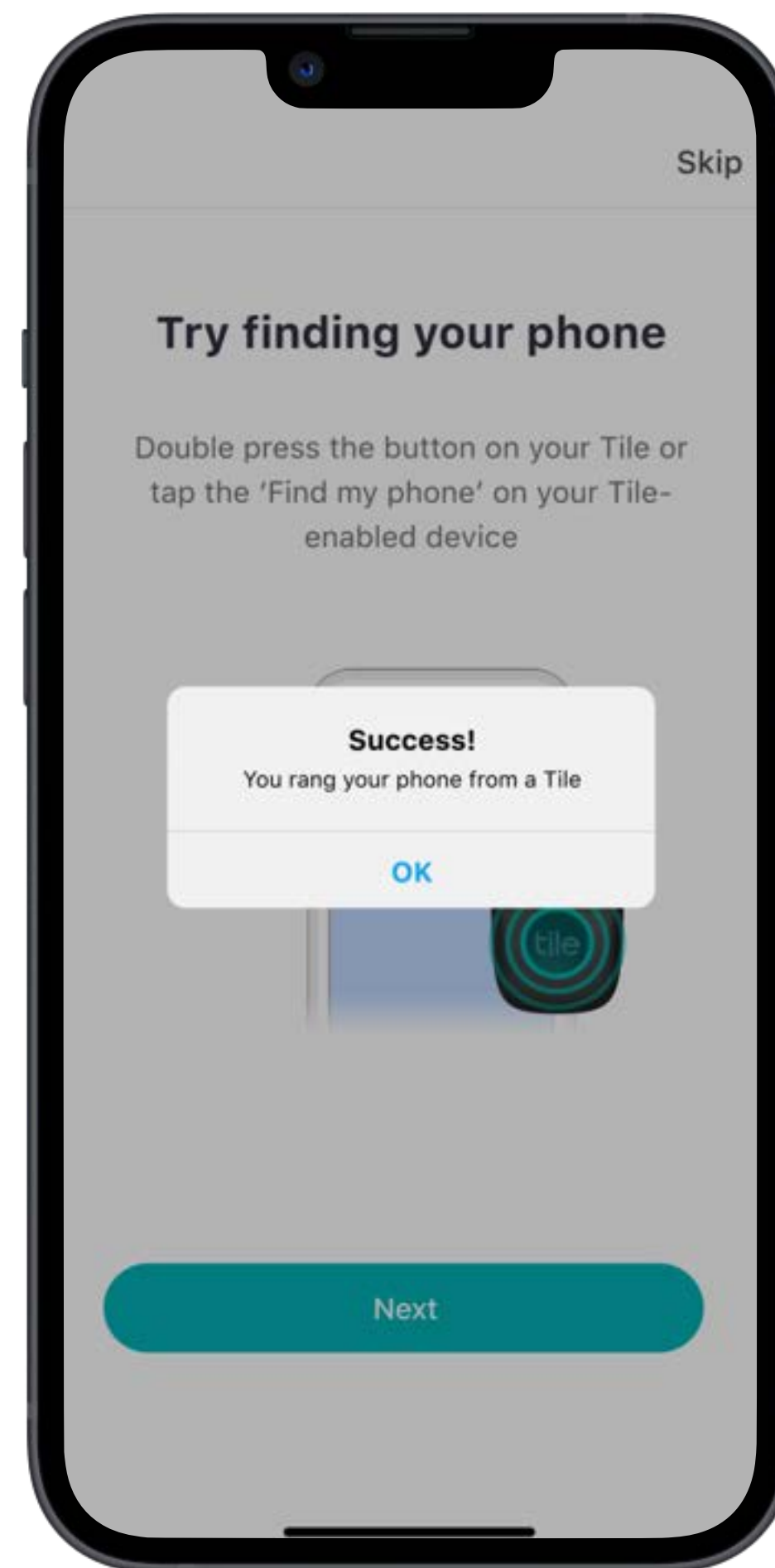
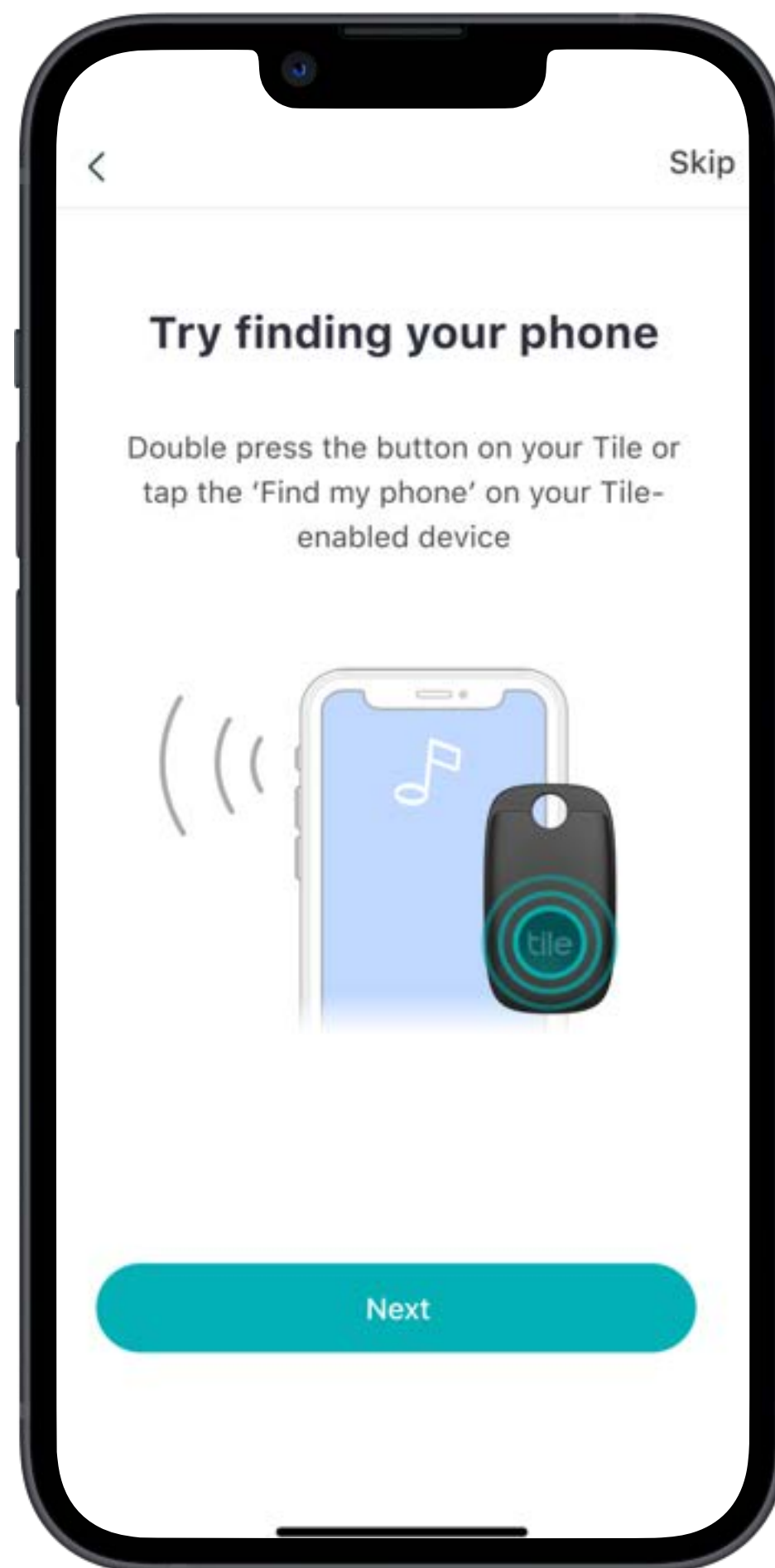
Android users may see slightly different screens.



9

Give it a test. Tap “Find” in the app to ring your Tile.

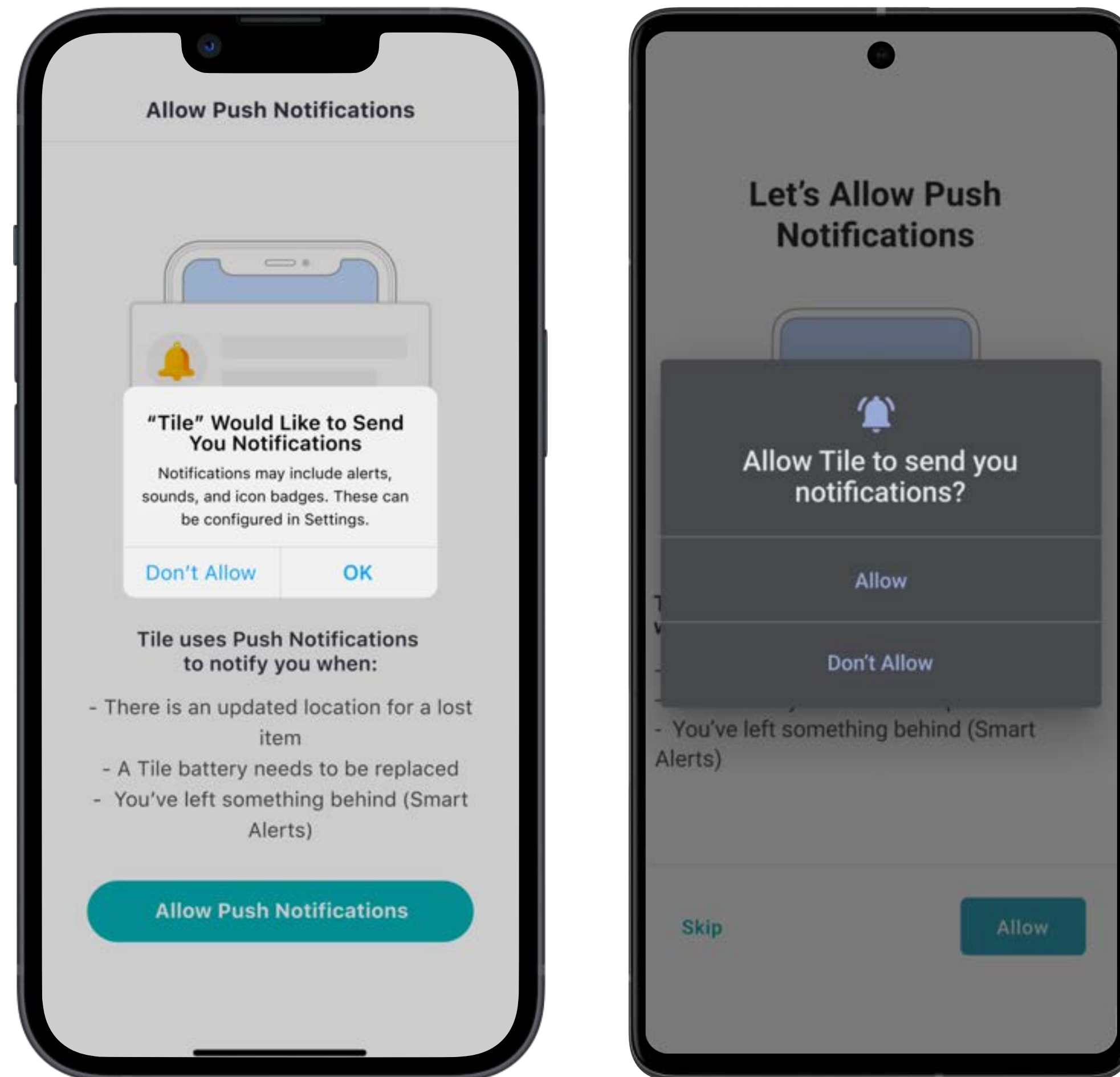
Android users may see slightly different screens.



10

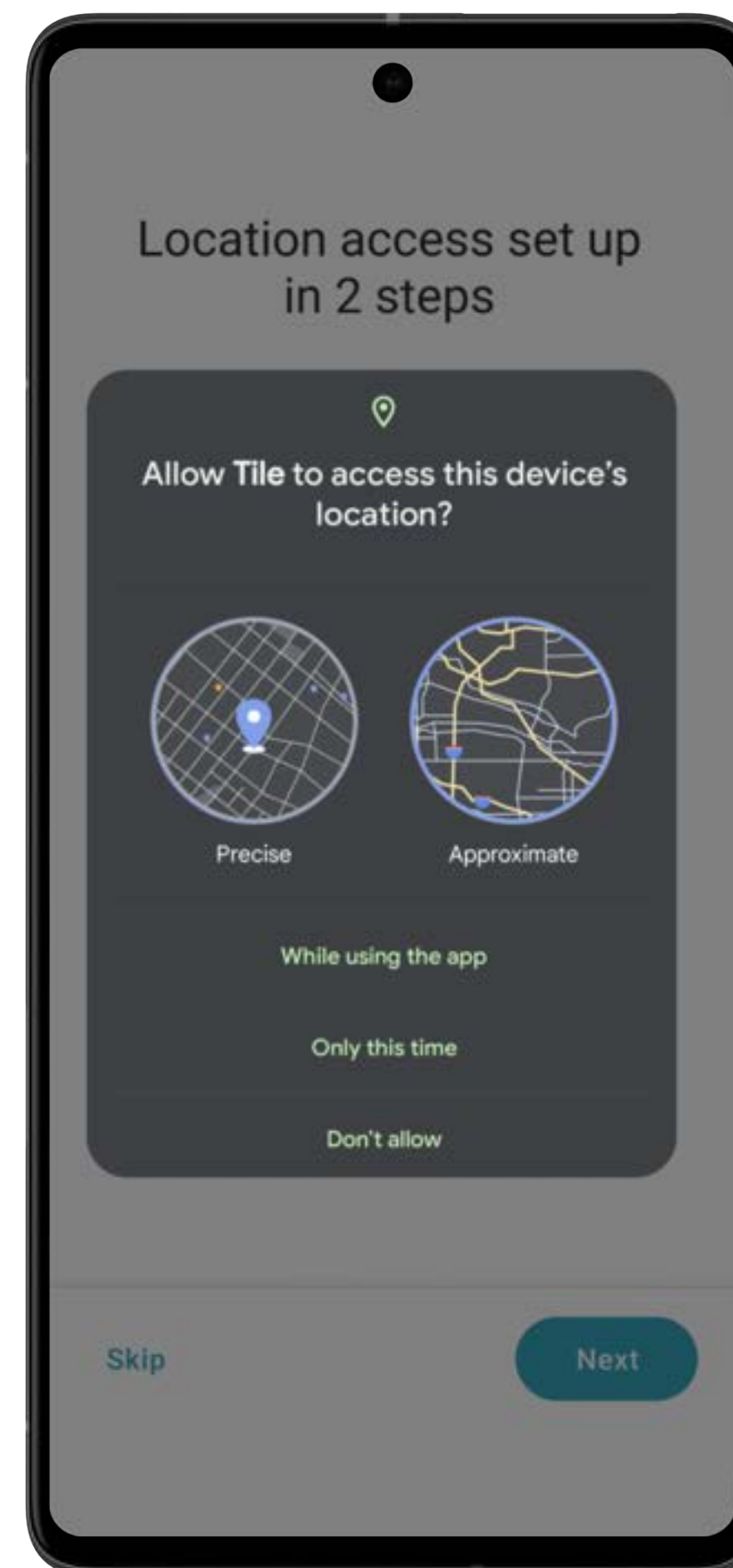
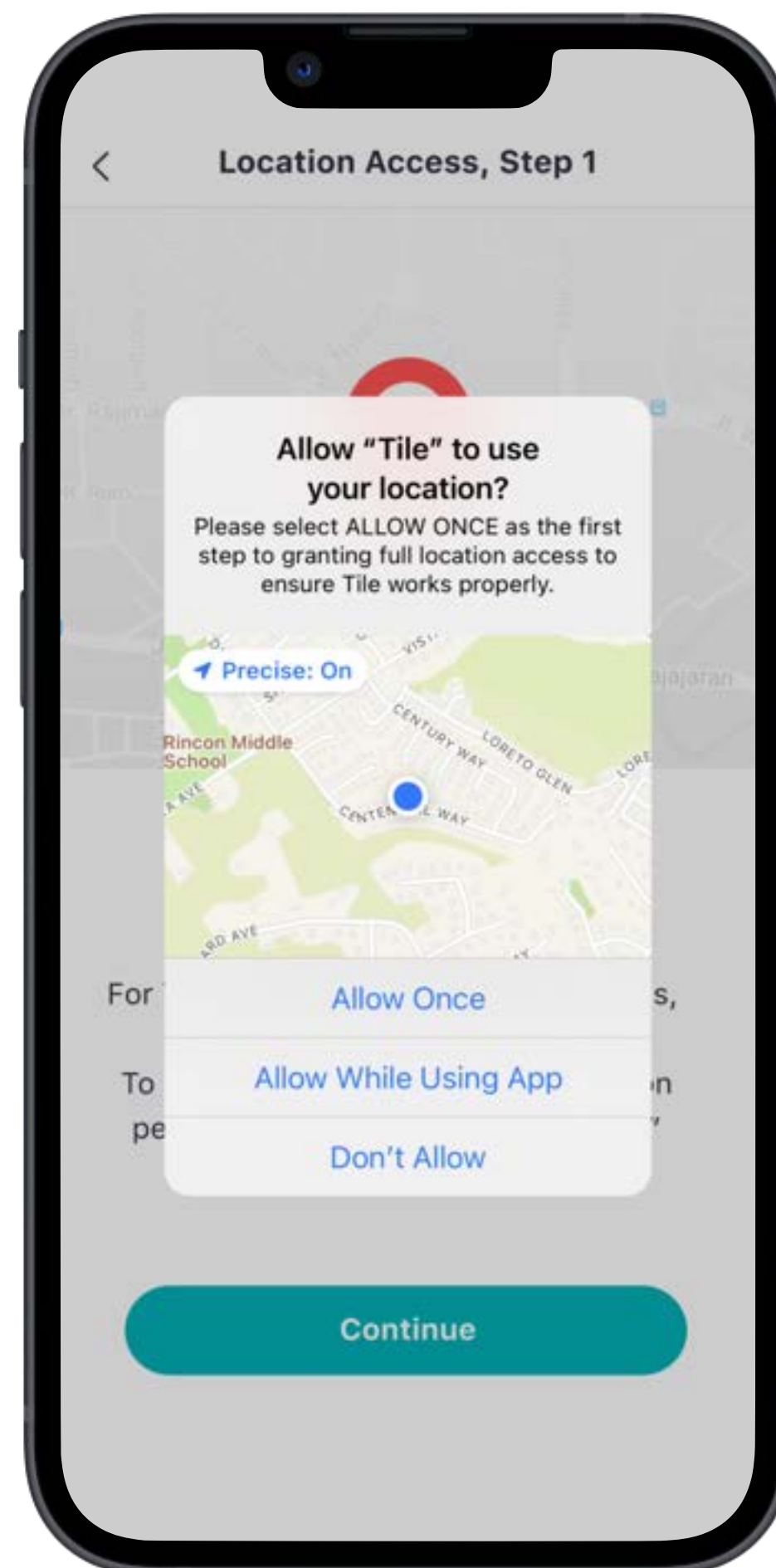
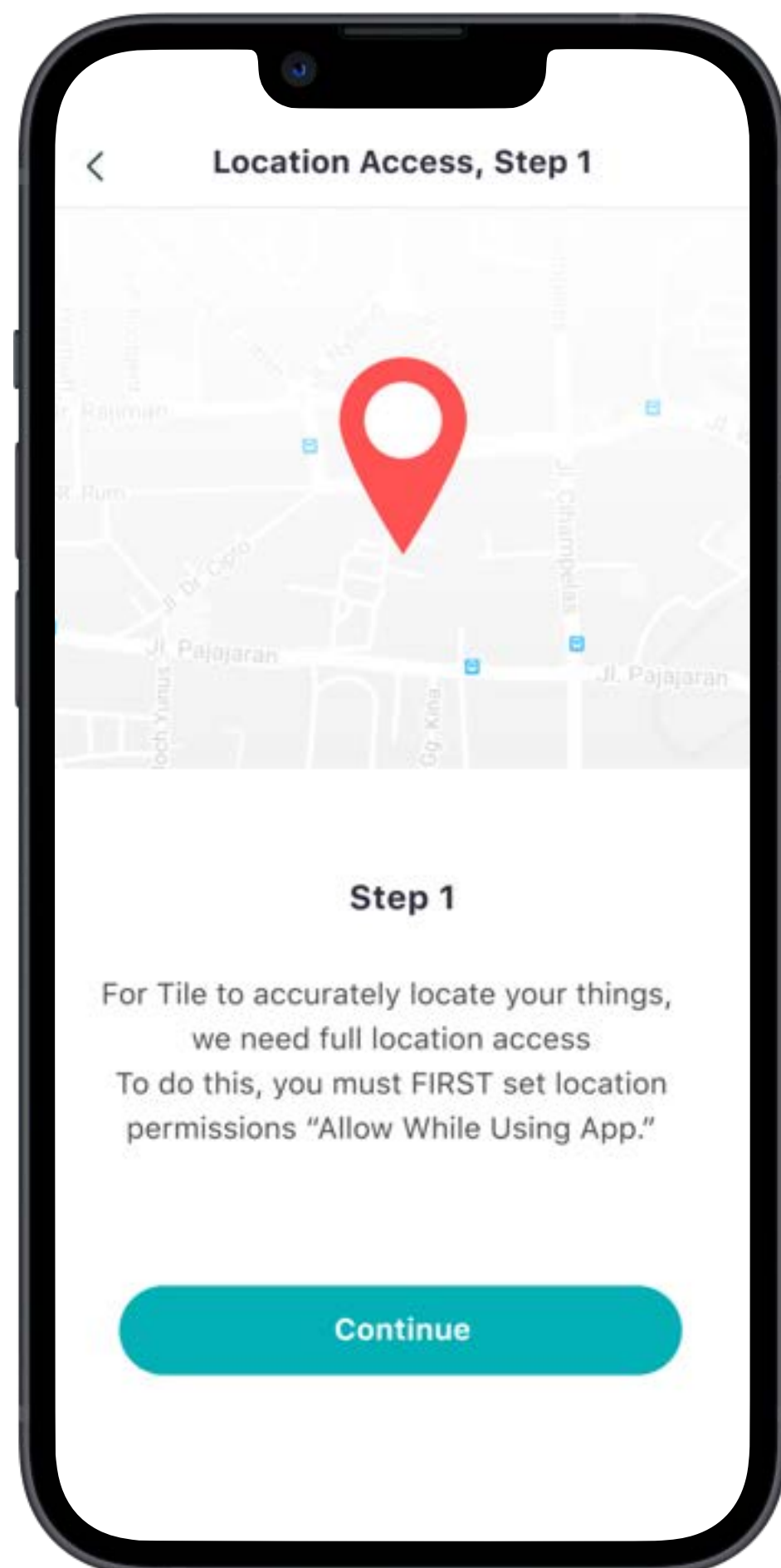
Here's a helpful hint if you can't find your phone — double press the button on your Tile to make it ring, even if your phone is on silent.

Android users may see slightly different screens.



11

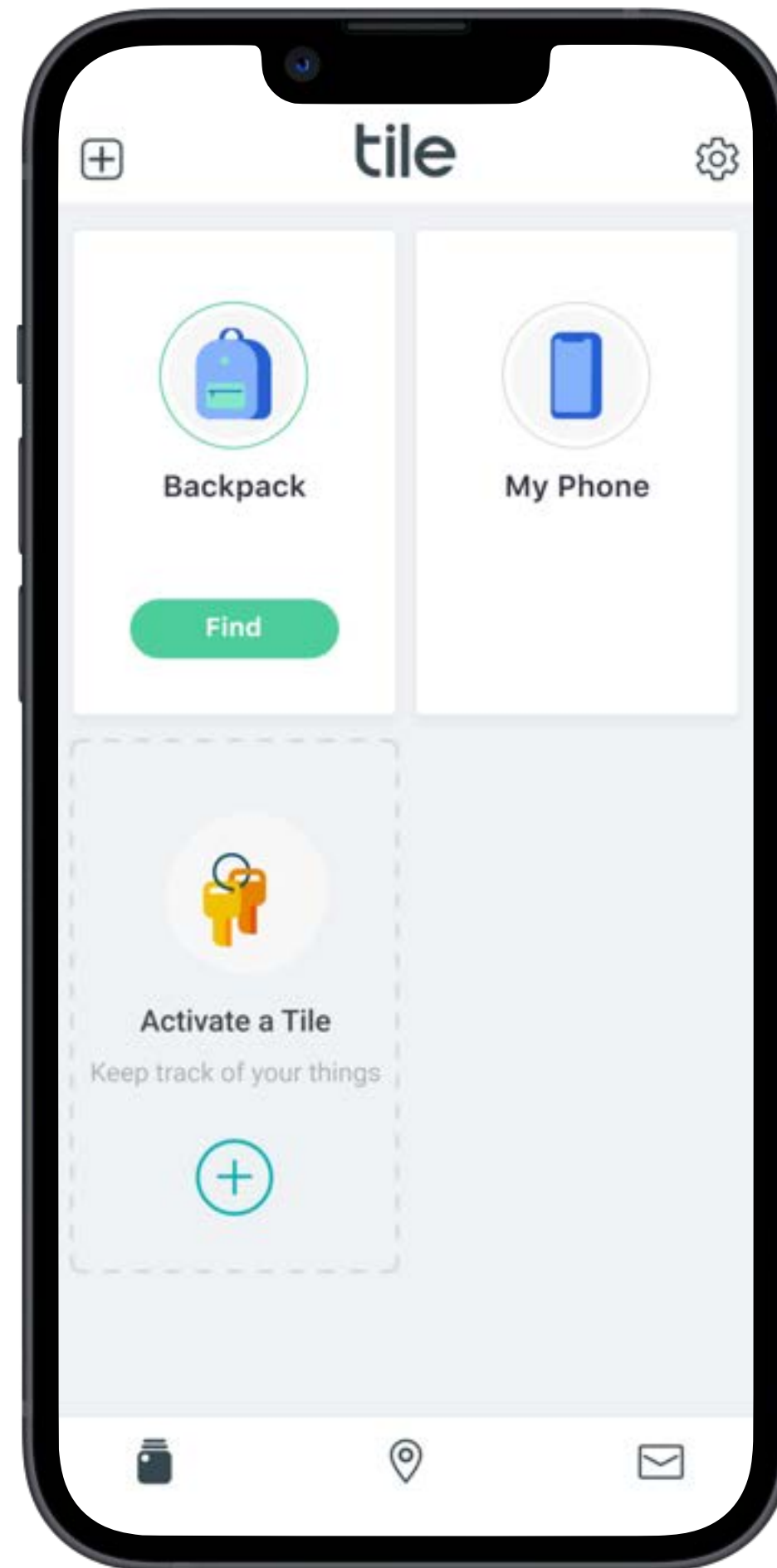
Make sure you say “OK” when Tile asks to send you Notifications. That way, you’ll get alerted for permission settings, when you need to change your batteries, and Notify When Found updates. Notifications are also necessary if you want to get Smart Alerts if you’ve left a Tiled item behind.



12

Allow Tile to use your location so you can always see the most up-to-date and accurate location of your Tile on the map and find your phone.

- On **iOS**, set your Location Permissions to “Always.”
- On **Android**, set your Location Preferences to “Allow all the time.”
- On **Android 12 and later**, set to “Allow all the time,” then “Precise.”



13

You're all set! Now you can see your Tiled item in the app — never lose your thing again.

