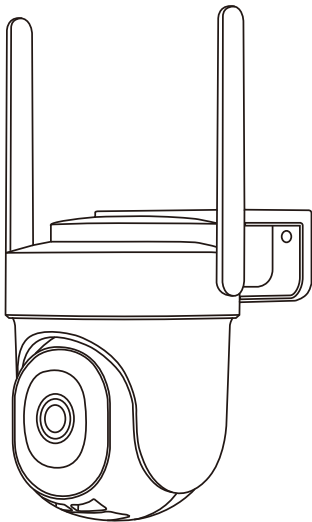


ZUMIMALL[®]

Get Smarter about Your Home Security



BF-BK05

FCC ID: 2AVKP-BF-BK04

PTZ Security Camera
QUICK START GUIDE

Welcome

Thank you for choosing ZUMIMALL.

Please read this quick start guide carefully before using this product, for further information please scan the QR code below to download user manual on ZUMIMALL website.

**Please scan the QR code to
get the detailed electronic manual.**



English



German



French



Italian



Spanish



Japanese



Scan "zumimall" QR
code to purchase products



Follow @zumimalloffice
on Facebook



@zumimall



@zumimalloffice



@zumimallcam



@zumimallcamera

More About Us

Web: www.zumimall.com

Facebook: www.facebook.com/zumimalloffice

Amazon Store: www.amazon.com/zumimall

Product Service

Email: Support@zumimall.com

Distributor: Distributor@zumimall.com

Brand Story

ZUMIMALL, founded in 2008, focuses on the design and research of intelligent security technology. We insist on taking consumers as the core and strive to create smart home products that lead the global home fashion trend for consumers. Believe in craftsmanship to create top-quality goods, technology changes life. With high-quality products and first-class services, it won the love and trust of millions of customers as soon as it went public.

Over the years, ZUMIMALL has served 45 countries, covering 80% of the population. We are the provider of smart lifestyles and a guardian of the wonderful moments of your life.

1 YEAR warranty

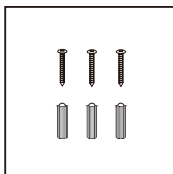
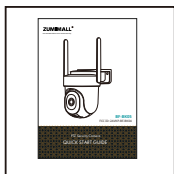
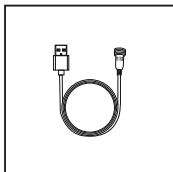
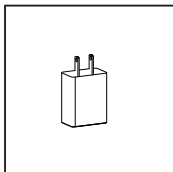
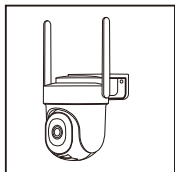
One-on-One Customer Service

How to Activate the Free 1-year Warranty Extension?

- ▶ Send us the order number and SN number via email. ◀
- ▶ Please email us within 30 days of receiving the camera. ◀

Email: Support@zumimall.com

1. What's in the Box



Camera * 1

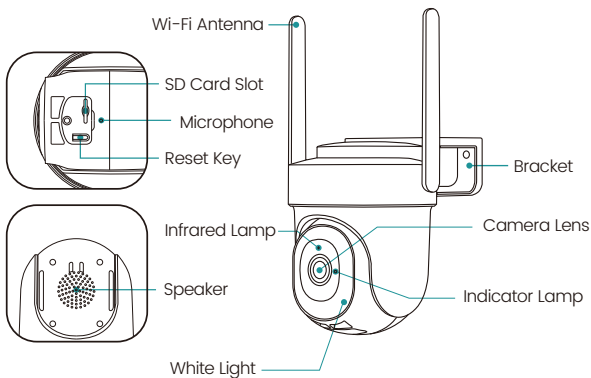
Quick User Guide *1

Screws Set *1

Power Adapter *1

Charging Cable *1

2. Product Diagram



Reset Button	Keep pressing for 5 seconds to reset
Blink Slowly in Red	Awaiting Wi-Fi connection, ready add devices
Blink Fast in Red	Wi-Fi connecting
Solid in Red	Network problem
Solid in Blue	Wi-Fi connected, camera running normally
Blink Slowly in Blue	Firmware update

3. Download and Install App

Download ZUMIMALL App from Google Play™ or App Store™. Or scan the QR codes below, with your smart phone.

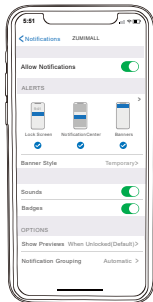
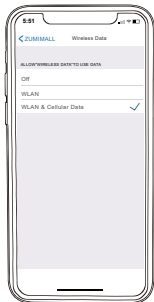
NOTE: Google Play™ is a trademark of Google Inc.

App Store™ is a service mark of Apple Inc.



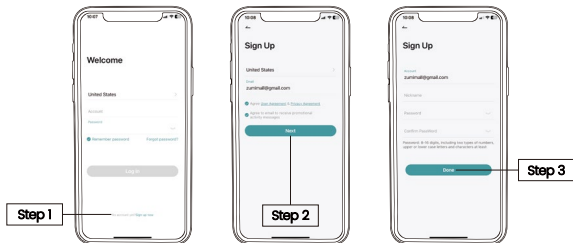
NOTE: Please turn on both of the following permissions.

- ① Allow ZUMIMALL App to access mobile cellular data and wireless LAN, otherwise it will fail to connect the camera.
- ② Allow ZUMIMALL App to receive pushed messages, otherwise, the phone will not receive alarms when motion is detected.



4. Account Registration

New user needs to sign up ZUMIMALL App with an email address. Click 'Sign up' to create a New Account and follow the steps to complete registration.

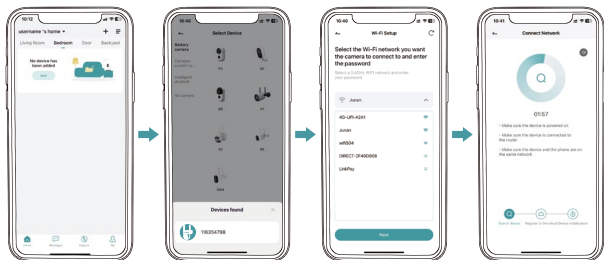


5. Add Camera to App

5.1 Preparations for connection

- ① Insert a Micro SD Card into the camera to save video clips or you can start the 7-day free cloud service. Without Micro SD Card or cloud service, no video will be saved.
- ② Please select 2.4G/5GWiFi to ensure good signal.
- ③ For successful pairing, ensure that both the phone and camera are connected to the same network.
- ④ When connecting to the network, please take the camera close to the router (Recommended within 10-15ft).

Method 1: Bluetooth Setup(RECOMMENDED)



1) On the Homepage, tap 'Add' or '+' in the upper right corner, tap 'Add Device'.

2) If the Bluetooth of the cellphone doesn't turn on, the app will show a pop-up, please allow it to turn on Bluetooth.

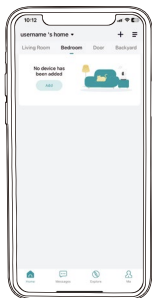
3) After Bluetooth turns on, the app will automatically search for devices that are on and not bound. Select the device you want connect to in the search list.

4) To connect the camera, select either the 2.4GHz or 5GHz Wi-Fi and enter the password. The app will automatically display the Wi-Fi you may be using when Bluetooth is turned on. Usually, the name and password for both Wi-Fi networks are the same or similar. If you cannot find the Wi-Fi network, please contact your router provider to check your router's Wi-Fi settings.

5) The app will automatically go to the page where the wifi connection is in progress. A sound will be heard. Wait for connection successful and camera indicator light changes to steady blue. Click ' Next ' to edit the camera name and choose a family. Click 'Done' to finish the setup.

6) If failed to connect, check the reason and resolution shown on the app. Long press the reset button until hear a ' Boogu ' sound to reset the camera and start again, or try the other methods below.

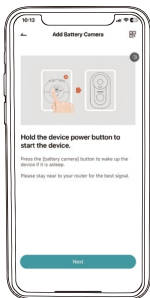
Method 2: QR Code Setup



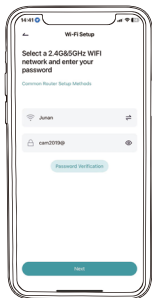
Tap 'Add Device'



Select Camera



Turn on the Camera



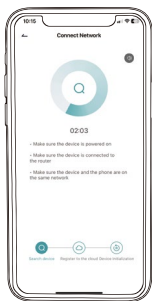
Input Wi-Fi Password



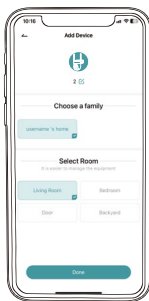
Prepare the Scanning



Scan QR Code



Installation Complete at 100%



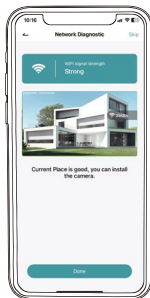
Name the Camera



View Installation Tips



Perform Network Diagnostic

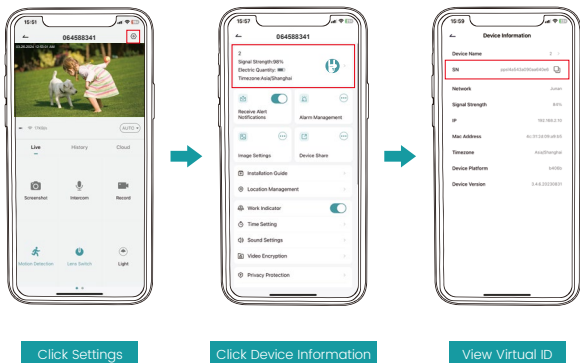


Using the Camera

If you have other questions, please send us the SN number of your camera and describe the problem you have encountered, we will solve it as soon as possible.

Email: Tech@zumimall.com

How to find SN number?



Manufactured for: Shenzhen Junan Technology Co., Ltd.

Address: Room405A, Haiyuan Innovation Center No. 8, Fu'an Avenue, Hehua Community, Pinghu Longgang District, Shenzhen, CHINA

E-mail: tech@zumimall.com

Manufactured by: SHENZHEN BOVISION TECHNOLOGY CO.,LTD



Name: Sea&Mew Consulting GmbH

Address: Mittenhuber Straße 4, 92318 Neumarkt

Email: Compliance.EU@outlook.com

Contact Person: Yuan Li

[EN] ⚠ Warning: Keep this plastic bag away from babies and children to avoid the risk of choking!

[ES] ⚠ ADVERTENCIA: ¡Mantén esta bolsa de plástico alejada de bebés y niños para evitar el riesgo de asfixia!

[JP] ⚠ 警告: 窒息の危険を避けるため、このビニール袋は乳幼児の手の届かないところに保管してください!

[DE] ⚠ WARNUNG: Halten Sie diese Plastiktüte von Babys und Kindern fern, um die Gefahr des Erstickens zu vermeiden!

[POL] ⚠ OSTRZEŻENIE: Plastikową torbę należy trzymać z dala od niemowląt i dzieci, aby uniknąć ryzyka zadławienia!

[CS] ⚠ UPOZORNĚNÍ: Uchovávejte tento plastový sáček mimo dosah kojenců a dětí, abyste předešli riziku udušení!

[IT] ⚠ AVVERTENZA: tenere questo sacchetto di plastica lontano da neonati e bambini per evitare il rischio di soffocamento!

[FR] ⚠ AVERTISSEMENT : Gardez ce sac en plastique hors de portée des bébés et des enfants afin d'éviter tout risque d'étouffement !

[NL] ⚠ WAARSCHUWING: Houd deze plastic zak uit de buurt van baby's en kinderen om verstikkingsgevaar te voorkomen!

[SE] ⚠ VARNING: Håll denna plastpåse borta från spädbarn och barn för att undvika risken för kvävning!

[SA] ⚠ تذكير: يرجى إبقاء هذه الحقيبة البلاستيكية بعيداً عن الأطفال لتجنب خطر الاختناق!



**LE TRI
+ FACILE**



BARQUETTE



ÉTUI



Séparez les éléments avant de trier



FR

Cet appareil,
ses accessoires
et cordons
se recyclent

A DÉPOSER
EN MAGASIN



A DÉPOSER
EN DÉCHÈTERIE



OU

Points de collecte sur www.quefairedemesdechets.fr
Privilégiez la réparation ou le don de votre appareil !



R 210-221219

Made in China



ZUMIMALL®

Get Smarter about Your Home Security