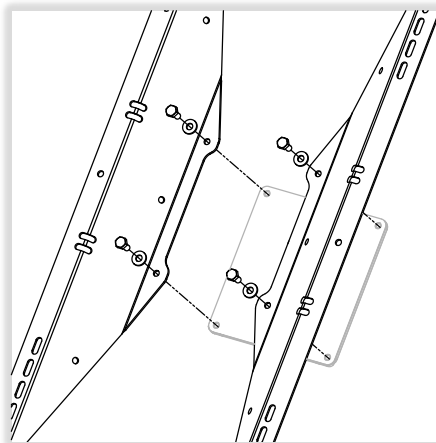
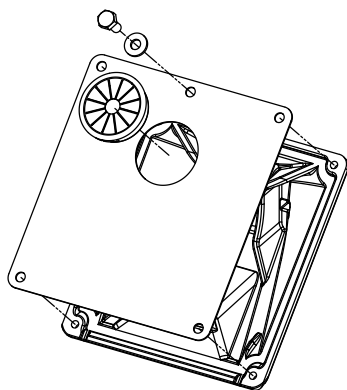
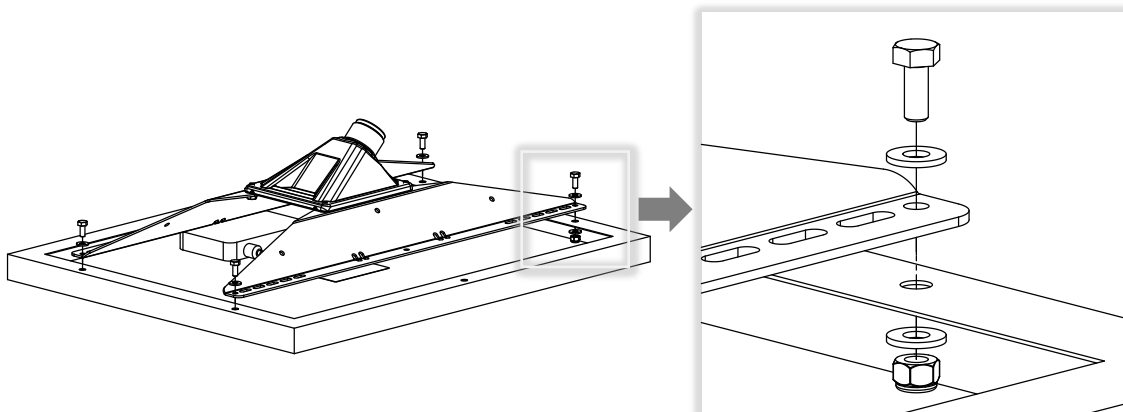


1. Install included grommet in cover plate and secure plate to wedge casting using one bolt, ensuring other four mounting holes are aligned.
2. Fasten sheet metal brackets to casting with four bolts and flat washers.



3. Place casting/bracket assembly on back surface of solar panel. Align bracket holes with solar panel frame holes and fasten as shown with included hardware: four bolts, four lock nuts and eight flat washers.

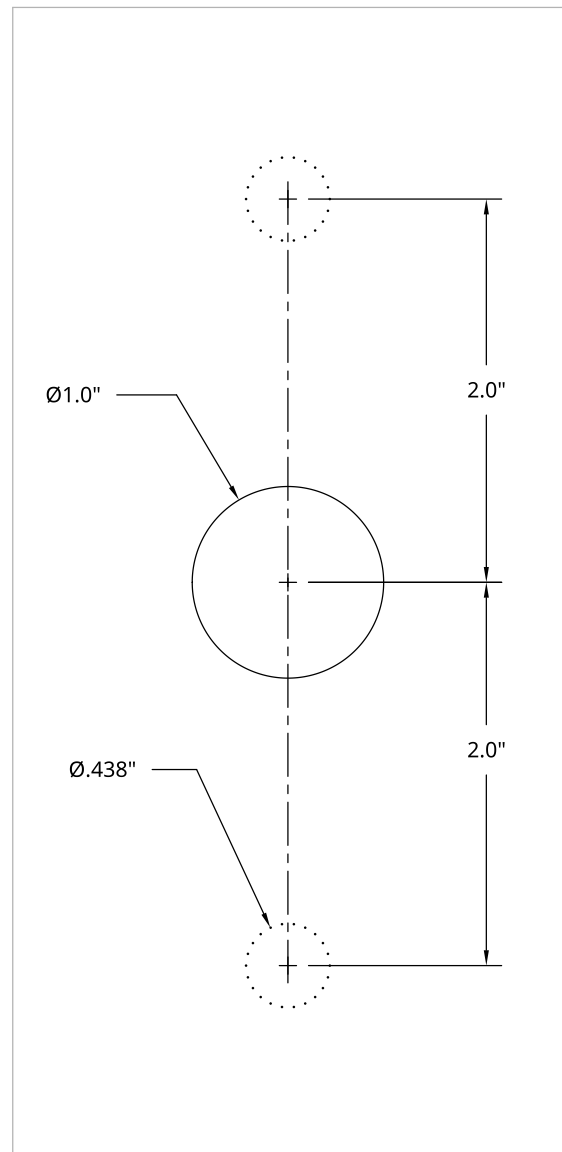
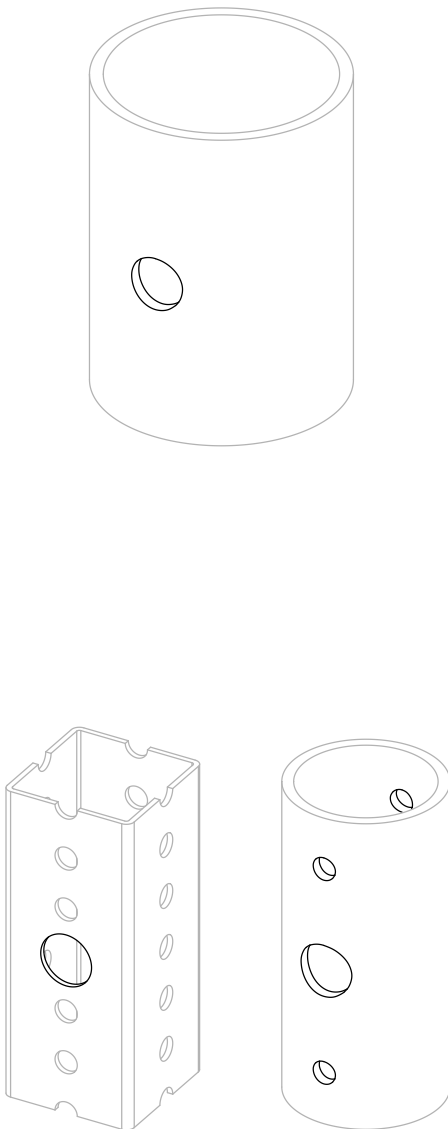




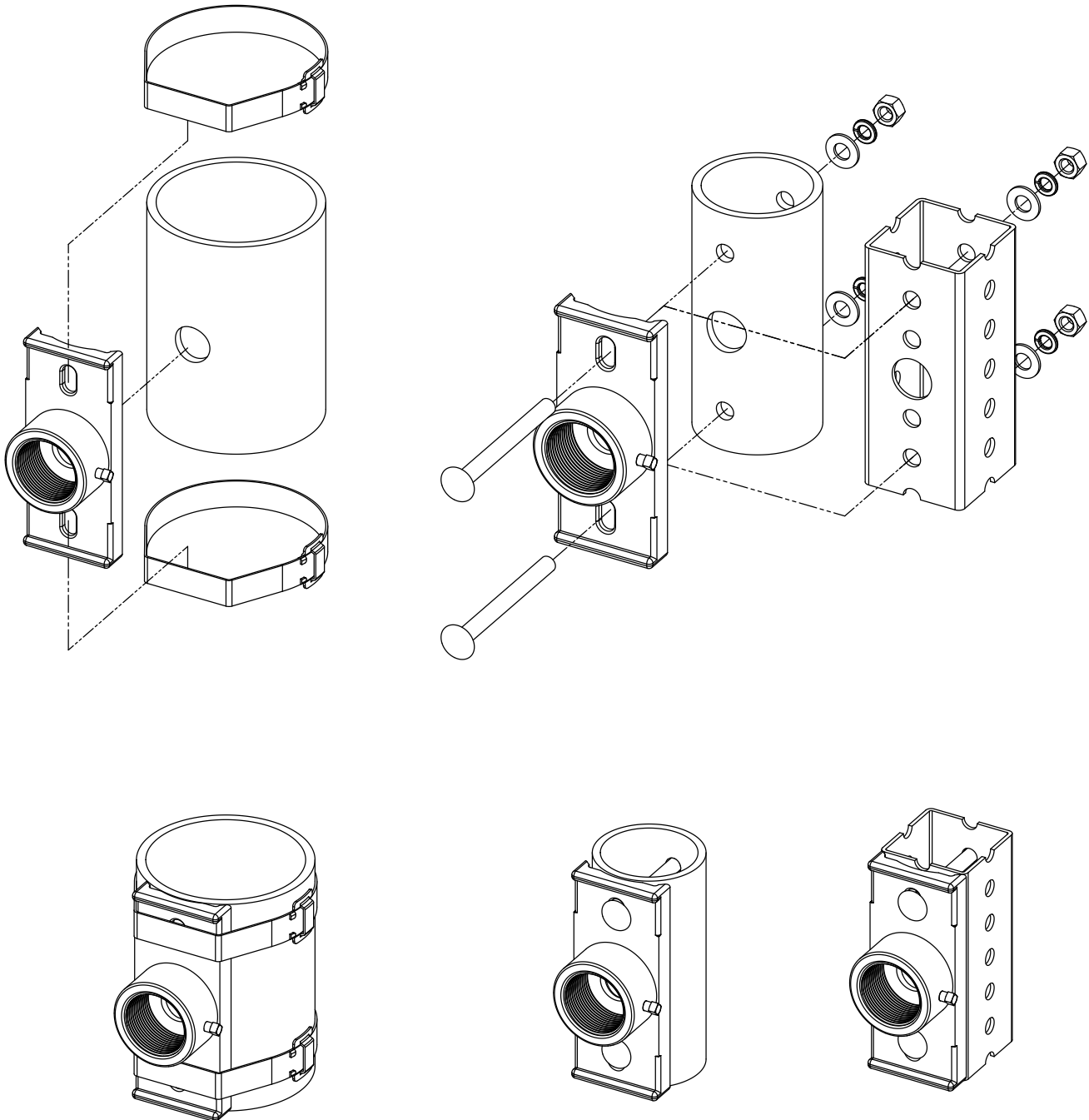
4. Determine appropriate installation location per **LEVEL 1** and **LEVEL 2** guides and mark pole accordingly.
5. If not using external conduit, drill/enlarge wire entry hole to 1" diameter using suitable step drill or hole saw. Deburr hole edges.
6. If through-bolting to plain post, drill bolt holes centered on wire entry hole. Recommended size is 0.438" diameter and 4" vertical spacing.



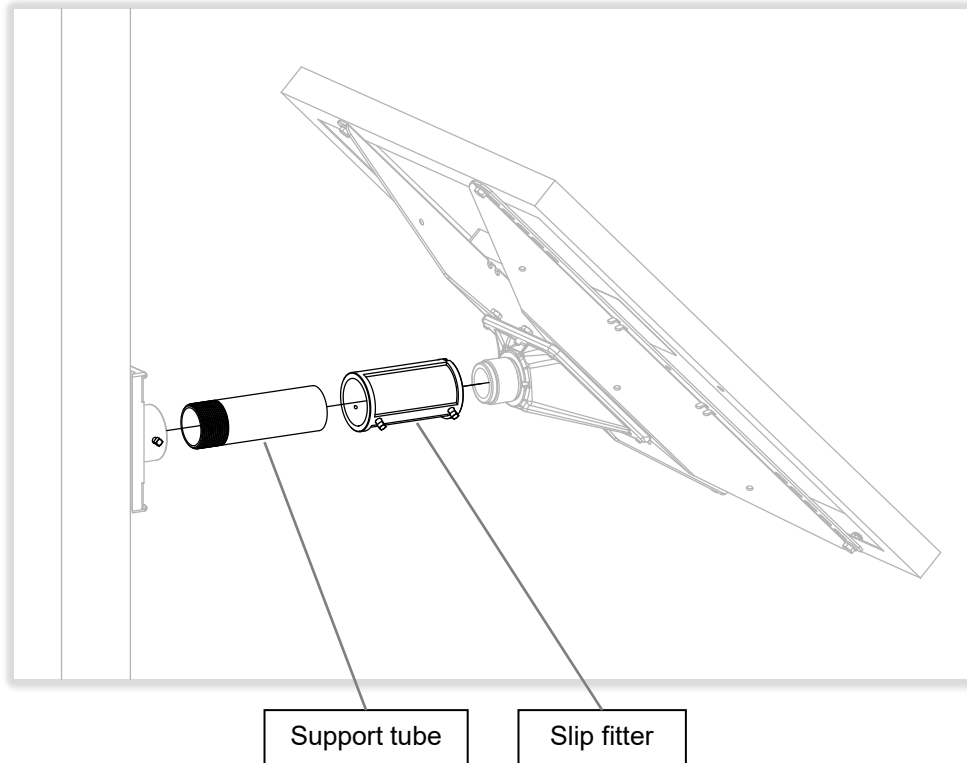
**Solar panels can generate substantial bending forces on poles.
Ensure pole and fastener strength is sufficient for required wind loading with installed system.**



7. Band or bolt hub plate to post using suitable hardware.

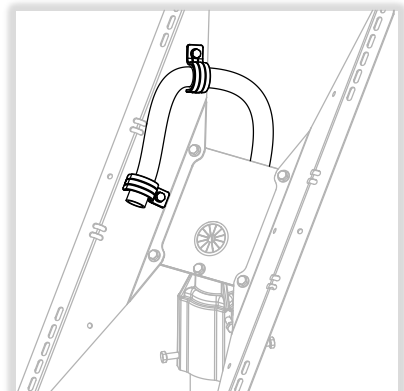
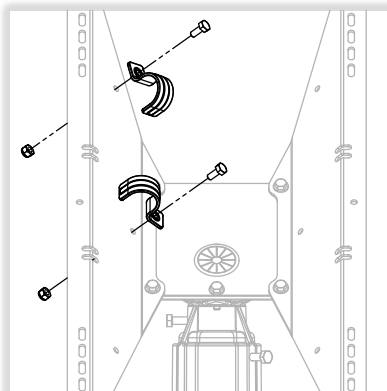
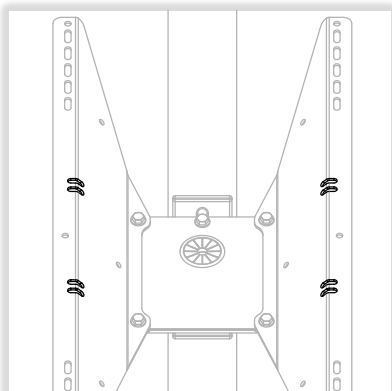


8. Thread slip fitter all the way onto wedge casting. Thread support tube into hub plate. Install slip fitter over support tube, ensure wedge casting is horizontal and tighten all locking screws.



When exposed to light, solar panels generate electricity that can produce a shock or burn. To render them safe during installation, fully cover their front surface with an opaque material.

9. Route solar cable provided with system through grommet and down pole. Make connections within MX Module before mating connectors from solar panel. See applicable MX Module Install Guide for details.
10. Use cable ties to fasten excess cable to bracket slots shown. If using 3/4" flexible conduit mount kit, route conduit as shown and fasten conduit clamps with supplied bolts and nuts.



NOTE: READ ALL INCLUDED INSTALL GUIDES BEFORE SYSTEM INSTALLATION