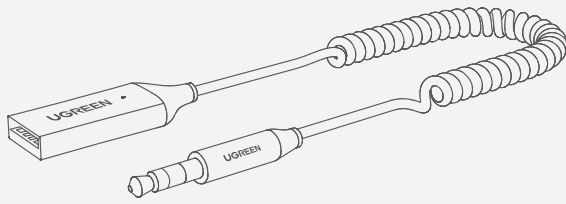


UGREEN

Car Bluetooth Audio Receiver

Model: CM309 | P/N: 70601

Package Contents



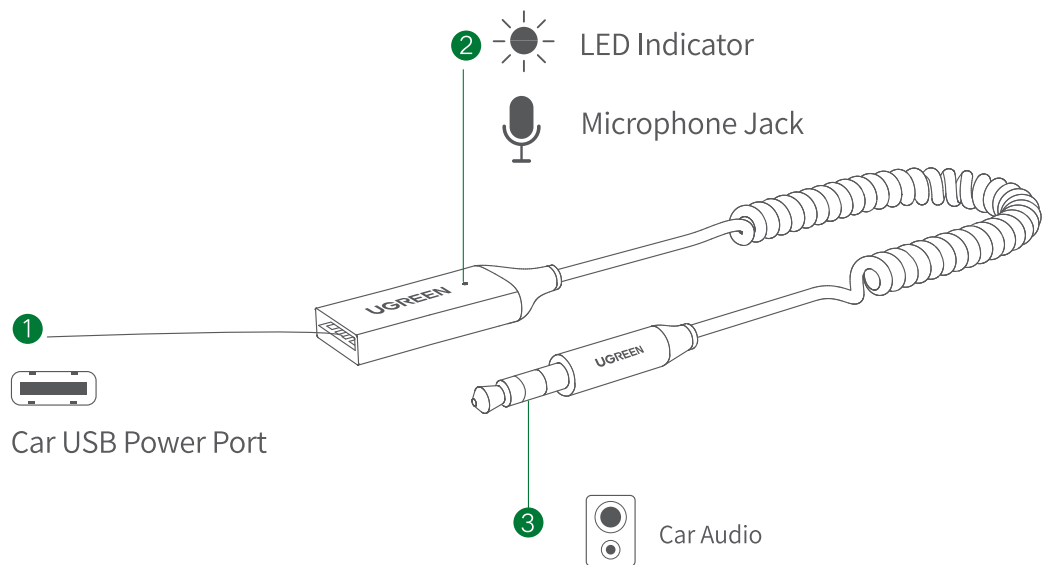
1 × Car Bluetooth Audio Receiver



1 × User Manual



Product Overview

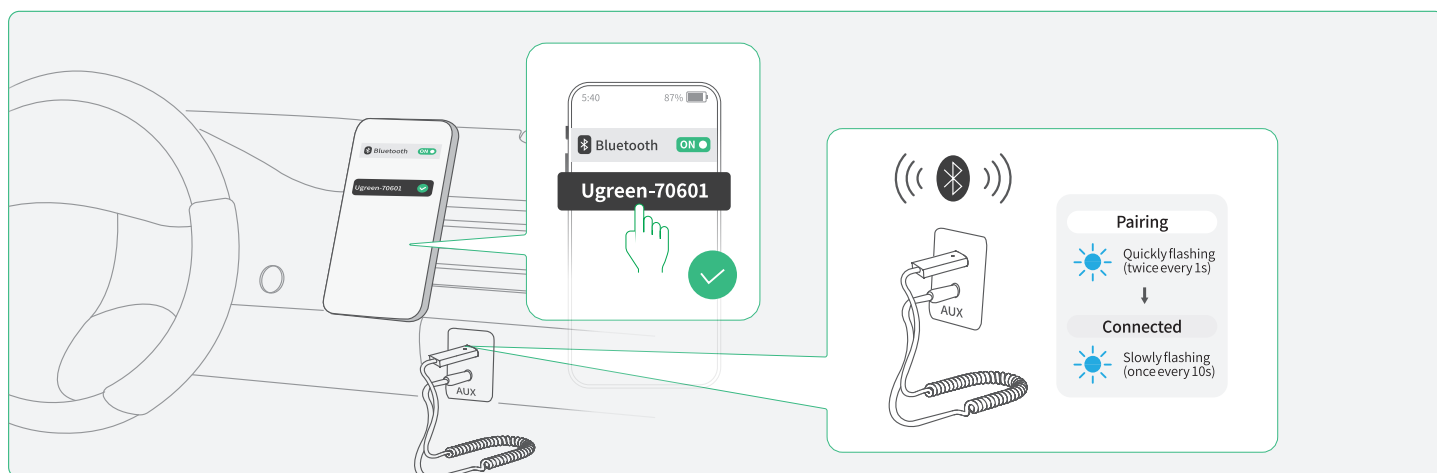


① USB 2.0 Port

② Mic & LED Indicator Light

③ 3.5mm Port

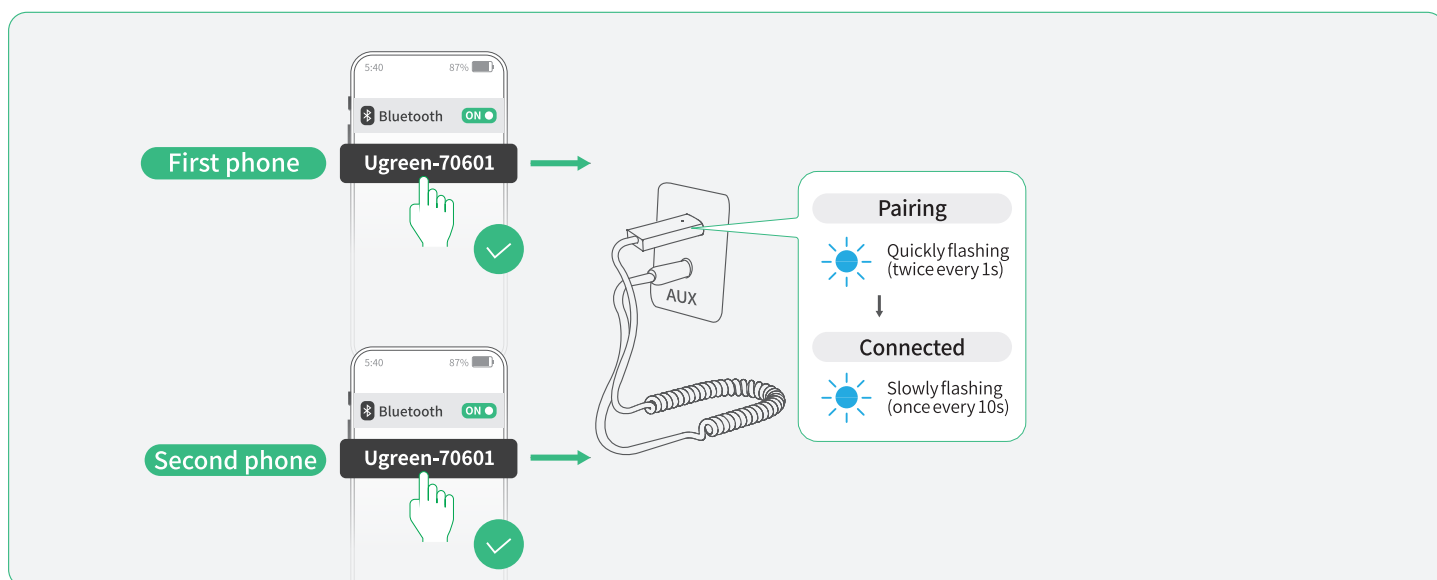
01 Connect to the First Phone



1. Plug the receiver into the car USB port and 3.5mm port.
2. It will automatically turn on and enter pairing mode when starting your car.
3. Connect to "Ugreen-70601" in your phone's Bluetooth list.
4. Blue indicator slowly flashes to indicate a successful pairing.
5. If you want to disconnect it, you can turn off the Bluetooth of your phone or switch off the car. It will automatically reconnect to your phone next time after powering on this unit.

Note: To connect a non-Bluetooth-enabled speaker, please plug the 3.5mm connector into the speaker while connecting the USB plug to a power adapter, then connect your phone to the receiver.

02 Connect to the Second Phone



1. Turn off the Bluetooth of the first phone (tablet or computer) after successful pairing.
2. Connect to "Ugreen-70601" in your second phone's Bluetooth list. It slowly flashes blue when the connection is completed.
3. Turn on the Bluetooth of the first phone and it will automatically reconnect to the receiver.

Note: It only plays music on one phone at a time.

03 If the Connection Fails

- If pairing is not established within about 5 minutes, you can:
- Keep the receiver within the transmission range of 10m/32ft.
 - Replug the USB connector of this unit.
 - Reset the Bluetooth on your phone.

04 Indicator

•	Power on: Blue indicator stays on for 1s
	Pairing: Blue indicator flash twice every 1s
☀	Pairing Successful: Blue indicator flash once every 10s
	Disconnected: Blue indicator flash twice every 1s

! Notes

- Do not use around strong magnetic fields.
- Do not expose to liquids, moist or extreme temperatures.
- Do not dismantle, impact or crush.
- Do not clean this unit with strong chemicals or detergents.
- Keep out of reach of children.
- Do not place this unit in direct sunlight.
- Please store this unit in dry, clean and moderate climates if you will not use this unit for a long time.

☰ Specifications

Model	CM309
Bluetooth Version	5.3
Frequency Range	2400MHz-2483.5MHz
Max. RF Output Power	4 dBm (conducted)
Transmission Distance	10m Max (no blocking)
Codecs	SBC, AAC
Frequency Response	20 Hz-20 kHz
Output Level (Receiving)	740mVrms
SNR	>94 dB
THD+N	<0.05%
Sensitivity	-42±3dB

* The data are measured by UGREEN lab but may vary based on specific circumstances.



FCC Statement

This device complies with part 15 of the FCC Rules. Operation is subject to the following two conditions:

(1) This device may not cause harmful interference, and (2) this device must accept any interference received, including interference that may cause undesired operation.

Warning: Changes or modifications not expressly approved by the party responsible for compliance could void the user's authority to operate the equipment.

FCC Radiation Exposure Statement

This equipment complies with FCC radiation exposure limits set forth for an uncontrolled environment. This transmitter must not be co-located or operating in conjunction with any other antenna or transmitter NOTE:

This equipment has been tested and found to comply with

the limits for a Class B digital device, pursuant to part 15 of the FCC Rules. These limits are designed to provide reasonable protection against harmful interference in a residential

installation. This equipment generates, uses and can radiate radio frequency energy and, if not installed and used in accordance with the instructions, may cause harmful interference

to radio communications. However, there is no guarantee that interference will not occur in a particular installation. If this equipment does cause harmful interference to radio or television

reception, which can be determined by turning the equipment off and on, the user is encouraged to try to correct the interference

by one or more of the following measures:

—Reorient or relocate the receiving antenna.

—Increase the separation between the equipment and receiver.

—Connect the equipment into an outlet on a circuit different from that to which the receiver is connected.

—Consult the dealer or an experienced radio/TV technician for help.

The device has been evaluated to meet general RF exposure requirement. The device can be used in portable exposure condition without restriction.



WEEE

This symbol on the product(s) and / or accompanying documents indicates that, under the new Directive 2012/19/EU on waste electrical and electronic equipment (WEEE), product(s)

used electrical and electronic equipment (WEEE) should not be mixed with general household waste. For proper treatment, recovery and recycling, please take this product(s) to designated

collection points where it will be accepted free of charge. Disposing of this product correctly will help save valuable resources and prevent any potential negative effects on human

health and the environment, which could otherwise arise from inappropriate waste handling.

Please contact your local authority for further details of your nearest designated collection point. Penalties may be applicable for incorrect disposal of this waste, in accordance with your national legislation.

For professional users in the European Union

If you wish to discard electrical and electronic equipment (EEE), please contact your dealer or supplier for further information.

For disposal in countries outside of the European Union

This symbol is only valid in the European Union (EU). If you wish to discard this product please contact your local authorities or dealer and ask for the correct method of disposal.

GB Declaration of Conformity

Hereby, Ugreen Group Limited declares that the product is in compliance with Directive UK Radio Equipment Regulations(SI 2017 No.1206)& The Restriction of the Use of Certain Hazardous Substances in Electrical and Electronic Equipment Regulations 2012 (SI 2012 No.3032). Learn more about the GB Declaration of Conformity is available at the following internet address: <https://www.ugreen.com/download/>

Ugreen Group Limited

Add: Ugreen Building, Longcheng Industrial Park, Longguanxi Road, Longhua, Shenzhen, China

UK REP:Acumen Intemational Business Consultancy Limited

Add:94 Ock Street, Abingdon, OX14 5DH, UK



EU Declaration of Conformity

Hereby, Ugreen Group Limited declares that the product is in compliance with Directive 2014/53/EU & 2011/65/EU. Learn more about the EU Declaration of Conformity is available at the following internet address: <https://www.ugreen.com/download/>

Ugreen Group Limited

Add: Ugreen Building, Longcheng Industrial Park, Longguanxi Road, Longhua, Shenzhen, China

EU REP: Ugreen Group GmbH

Add: Mannheimer Str. 13, 30880 Laatzen, Germany

IC Statement

EN

This device complies with Industry Canada licence-exempt RSS standard(s). Operation is subject to the following two conditions:

- (1) this device may not cause interference;
- (2) this device must accept any interference, including interference that may cause undesired operation of the device.

FR

Le présent appareil est conforme aux CNR d'Industrie Canada applicables aux appareils radio exempts de licence. L'exploitation est autorisée aux deux conditions suivantes :

- (1) l'appareil ne doit pas produire de brouillage ;
- (2) l'utilisateur de l'appareil doit accepter tout brouillage radioélectrique subi, même si le brouillage est susceptible d'en compromettre le fonctionnement.

CAN ICES-003(B) / NMB-003(B)

L'appareil a été évalué pour répondre aux exigences générales d'exposition aux RF. L'appareil peut être utilisé dans des conditions d'exposition portable sans restriction.

Warranty Information

A limited 2-year warranty applies to all UGREEN products purchased from UGREEN official store or authorized sellers. Please feel free to contact us if you run into any problems.

