



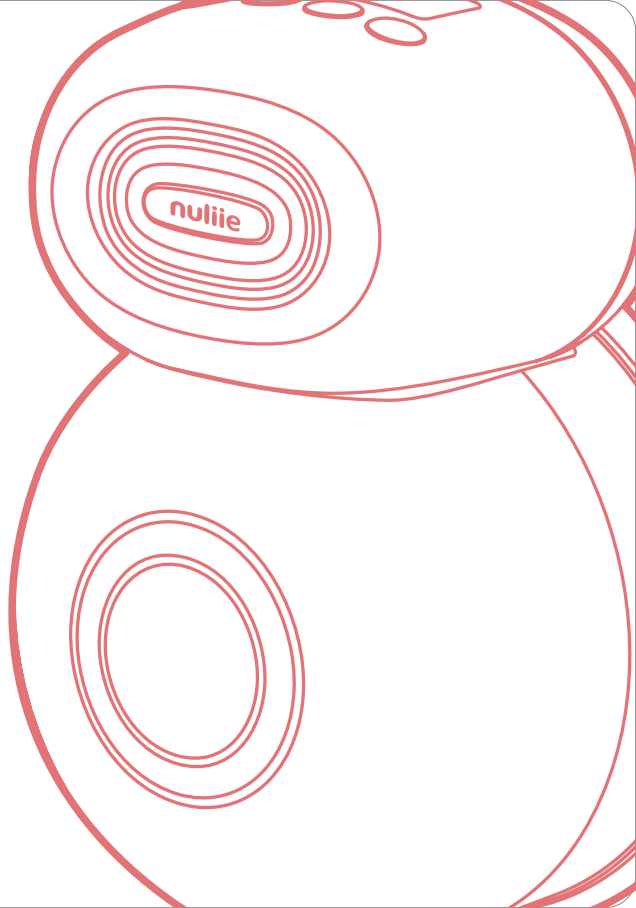
YM-8806

WEARABLE BREAST PUMP

User Manual



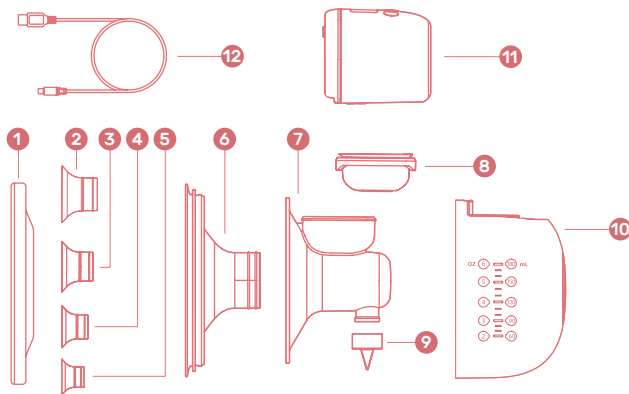
Visit **www.nuliie.com** to chat with a live representative, or email **support@nuliie.com** for assistance and inquiries.





English	Scan the QR code to access the User Manual from your phone.
Deutsch	Scannen Sie den QR-Code, um auf das deutsche Benutzerhandbuch von Ihrem Handy aus zuzugreifen.
Français	Scannez le code QR pour accéder au manuel d'utilisation en français depuis votre téléphone.
Italiano	Scansiona il codice QR per accedere al manuale utente in italiano dal tuo telefono.
Español	Escanea el código QR para acceder al manual de usuario en español desde tu teléfono.

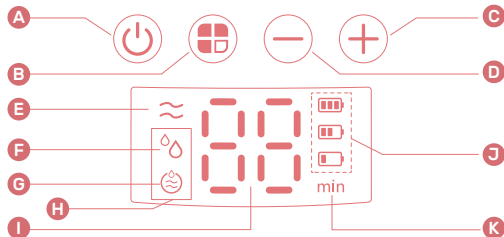
Product Structure Diagram



Parts List

- 1 Dust cover
- 2 24mm Flange insert
- 3 20mm Flange insert
- 4 17mm Flange insert
- 5 14mm Flange insert
- 6 Breast shield (27mm Flange)
- 7 Connector body
- 8 Suction bowl
- 9 Valve
- 10 Milk collector
- 11 Pump motor
- 12 USB charging cable

Button Function and LED Display Description



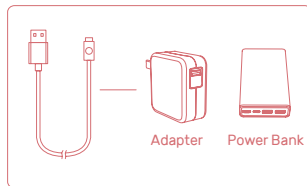
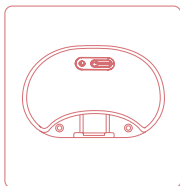
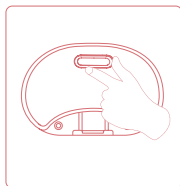
A Power Button: Press and hold for 2 seconds to turn the machine on or off. A single press initiates a pause, and the machine will automatically shut down after 5 minutes of inactivity. Additionally, the product has an auto-shutdown feature after 30 minutes of continuous operation, ensuring energy efficiency and user convenience.

B Mode Switch Button: Short press to cycle through stimulation mode, expression mode, bionic mode, and auto mode.

- C Level-Up Button:** Increases suction level from level 1 to level 12.
- D Level Down Button:** Decreases suction level.
- E Stimulation Mode:** This mode effectively stimulates the mammary gland for lactation. It features 12 levels, with a rapid pumping frequency and gentle suction.
- F Expression Mode:** This mode is suitable for efficient and rapid milk collection. It features 12 levels with a slow pumping frequency and powerful suction.
- G Bionic Mode:** This mode combines stimulation and expression modes to create a more immersive and natural pumping experience. It also features 12 levels.
- H Automatic Mode:** In this mode, expression and bionic modes operate simultaneously for a comprehensive pumping experience.
- I Level/Running Time:** Indicates the current suction level and running time for user convenience.
- J Battery Level:** Indicates three battery levels for easy monitoring.
- K Unit for measuring running time.**

Battery Charging Procedure

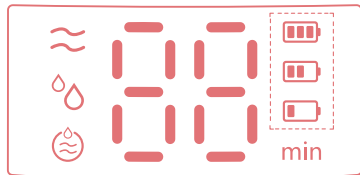
This product comes with a built-in lithium battery. When the LED power display shows one red bar and flashes, it indicates the battery is low and needs recharging. Follow the steps below to recharge the battery:



- 1** Open the silicone plug on the side of the motor to access the charging port (Refer to diagram 1).
- 2** Connect the DC Type-C port of the USB charging cable to the charging port. Then, plug the other end of the USB connector into a DC5V/1A adapter, power bank, or a socket with a USB port (Refer to diagram 2).

Note: Do not use the pump while charging. The display interface will only indicate the power level while charging.

Battery Status



LED Display	Battery Status
	Fully charged
	Medium battery level (41%-70%)
	Low on battery
& Flashing	Will power off soon
& Flashing	Charging

Assembly Procedure

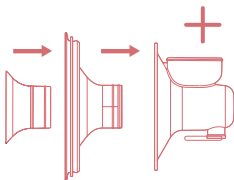
Step 1

Thoroughly wash your hands before assembling the cleaned components.



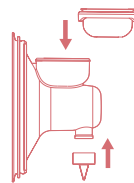
Step 2

Insert the silicone flange into the breast shield and then the assembled piece into the connector body. Press the edges with both hands to ensure a tight bond.



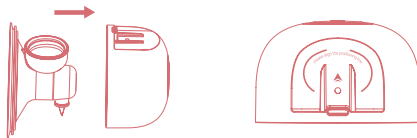
Step 3

Insert the suction bowl tightly inside the connector body from the top, then attach the valve to the bottom of the connector body.



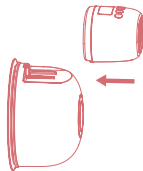
Step 4

Install the assembled breast shield and connector body onto the milk collector and align the positioning line to ensure a firm and correct bonding.



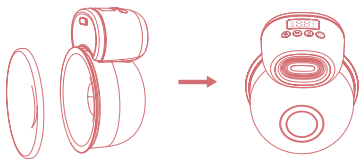
Step 5

Install the pump motor onto the milk collector and align the notch under the motor with the milk collector. Assemble it downward to fit with the milk collector and ensure it is appropriately affixed.



Step 6

Attach the dust cover to the milk collector to complete the assembly.



Usage Instructions

Before Pumping

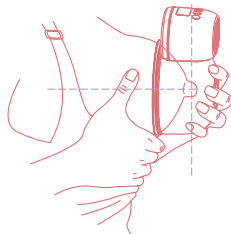
- 1 Ensure the proper assembly of the pump by following the instructions above.
- 2 Warm the breasts for five minutes using a heated towel or a hot and cold compress to stimulate mammary gland growth.

Pumping Process

- 1 To apply suction with the breast pump, place the breast shield over your breast without any gaps and insert the nipple inside the flange.

Keep your nipple upright and use your other hand to hold the breast, ensuring that no air enters.

While doing this, avoid moving the device or your breasts.



- 2 Long press the power button "([P])" for two seconds to turn on the breast pump. Short press the power button to pause pumping.



- 3 After turning on the breast pump, it will initiate the default stimulation mode. Press the "(+)" button to toggle between modes. You can choose from four modes: stimulation mode, expression mode, bionic mode, and auto mode.



- 4 Each mode features 12 levels of suction. Increase suction by pressing the "(+)" button and decrease it using the "(-)" button. Adjust the suction to your comfort level.

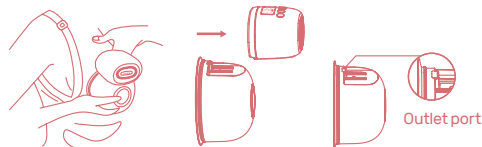


After Pumping

- 1 Turn off the breast pump by long pressing the power button for two seconds.



- 2 Carefully lift the breast pump away from your breast, maintaining an upright position. Afterwards, detach the motor from the milk collector.

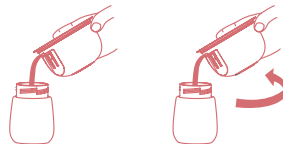


Step 1

Step 2

Note: Ensure the outlet port of the milk collector indicated in the above diagram is upright to prevent milk spillage.

- 3 To transfer the milk to the storage bottle, pour it through the outlet port. Afterwards, you can rotate the milk collector to extract any remaining milk.

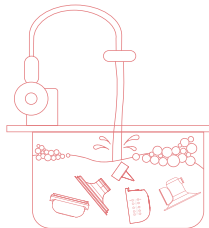


Cleaning Washable Accessories

The washable accessories are the dust cover, flange insert, breast shield, connector body, suction bowl, valve and milk collector.

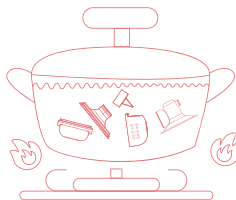
Washing Process

- 1 Take apart all washable accessories from the breast pump, ensuring thorough disassembly.
- 2 Rinse each washable accessory under running water to remove any visible milk residue.
- 3 Submerge the accessories in warm, soapy water for 5 minutes to clean and disinfect them effectively.
- 4 Use a soft brush to scrub the components, paying attention to hard-to-reach areas gently.
- 5 Rinse all components thoroughly to eliminate any soap residue.



Disinfect




- 1 Submerge the washable accessories in boiling water and let them simmer for 5 minutes. Ensure the temperature does not exceed 100°C (212°F).
- 2 Allow the washed accessories to air dry entirely before reassembling or storing them.
- 3 Alternatively, you can use a dishwasher or steam sterilization method to clean the accessories.



Tip

Sterilizing the breast pump accessories using a microwave oven or ultraviolet disinfection cabinet is not recommended, as it may reduce their durability.

Troubleshooting

No.	Problem	Solutions
1	Inadequate suction	<ul style="list-style-type: none"> -Check that all accessories are securely connected and ensure there is no air leakage. -Reassemble the accessories following the provided assembly instructions. -Verify that the valve outlet can open and close normally. -Ensure that the breast shield fits the breast perfectly. -Use the highest suction level.
2	Slow pumping	<ul style="list-style-type: none"> -The pumping speed may vary depending on your breast structure and mood. Regular pumping can improve pumping efficiency. -Consider warming your breast with a warm towel compress before pumping to boost milk production. -Start with the stimulation mode for 2 minutes, then switch to expression mode. -Adjust the suction level or massage your breast by hand to facilitate milk flow.
3	Unable to pump due to swollen breasts	<ul style="list-style-type: none"> -A breast obstruction may lead to reduced milk flow. -Perform breast massage following the illustration below: -Ensure relaxation and obtain sufficient rest. <div>    </div> <div> Circular massage Spiral massage Shiatsu massage </div>
4	Painful during pumping	<ul style="list-style-type: none"> -Ensure that you have chosen the correct size flange. -Reduce the suction level.

5	The breast does not empty completely	<p>-It is usual for different pumping methods to occasionally leave some milk in the breasts due to differences in breast structure, pumping frequency, and intensity.</p> <p>-Consider using another suitable method to express any remaining milk after using the breast pump.</p>
6	Low noise	<p>-The breast pump generates suction by inhaling and deflating the pump body, which may produce some noise. However, this product is designed to minimize noise, and the decibel level is maintained within the standard range of approximately 45 to 55 dB.</p>
7	Milk leaking	<p>-Ensure all breast pump parts are assembled correctly, especially the assembled connector body with the milk collector. Align the positioning line to fit it into the milk collector properly.</p> <p>-Check for any damage or deformities in the parts, and if you find any, please replace them promptly.</p>
8	The breast pump does not respond and cannot be turned on	<p>-Ensure that the breast pump is fully charged before use.</p> <p>-If the issue persists, it may be due to water or milk flowing into the main motor of the pump. Always remove the pump motor before pouring breast milk, and avoid submerging it in water when cleaning to prevent any damage.</p> <p>-If problems persist and you suspect a motor malfunction, please get in touch with our 24/7 live chat or email us at support@nuliie.com for the best solution.</p>

Cautions

1. Nuliie breast pump is designed for individual use only. Sharing it with multiple users can compromise their health and safety.
2. Do not use the breast pump while charging.
3. Keep the motor away from high temperatures and ignition sources to avoid the risk of combustion and explosion.
4. If you experience little or no breast milk expression or pain while expressing breast milk, please consult a medical professional.
5. Do not submerge the motor in water for cleaning or disinfection, and avoid using steam sterilizers for disinfection.
6. Please use a 5V adapter for charging. If the power adapter's output voltage exceeds 5V, the level indicator will show "E1," the motor will activate over-voltage protection, preventing it from being charged.
7. During the usage and cleaning of the accessories, the parts undergo various temperature changes and exposure to chemical detergents. We recommend replacing the parts every 3 to 6 months, and if you notice any damage, please replace them promptly.

FCC

Any changes or modifications not expressly approved by the party responsible for compliance could void the user's authority to operate the equipment.

This device complies with part 15 of the FCC Rules. Operation is subject to the following two conditions: (1) this device may not cause harmful interference, and (2) this device must accept any interference received, including interference that may cause undesired operation.

Note:

This equipment has been tested and found to comply with the limits for a Class B digital device, pursuant to part 15 of the FCC Rules. These limits are designed to provide reasonable protection against harmful interference in a residential installation. This equipment generates uses and can radiate radio frequency energy and if not installed and used in accordance with the instructions, may cause harmful interference to radio communications. However, there is no guarantee that interference will not occur in a particular installation. If this equipment does cause harmful interference to radio or television reception, which can be determined by turning the equipment off and on, the user is encouraged to try to correct the interference by one or more of the following measures:

- Reorient or relocate the receiving antenna.
- Increase the separation between the equipment and receiver.
- Connect the equipment into an outlet on a circuit different from that to which the receiver is connected.
- Consult the dealer or an experienced radio/TV technician for help.

CORRECT DISPOSAL OF THIS PRODUCT

(Waste Electrical & Electronic Equipment)

This marking shown on the product or its literature, indicate that it should not be disposed with other household wastes at the end of its working life.

To prevent possible harm to the environment or human health from uncontrolled waste disposal, please separate this from other types of wastes and recycle it responsibly to promote the sustainable reuse of material resources. Household user should contact either the retailer where they purchased this product or their local government office, for details of where and how they can take this item for environmentally safe recycling.

Business users should contact their supplier and check the terms and conditions of the purchase contract. This product should not be mixed with other commercial wastes for disposal.



Manufacturer: Guangdong Youmeng Electrical Technology Co., Ltd.

Address: One of Area A, level 3, Building 2, No. 17, Keyuan 3rd Road, Xiaohuangpu Community, Ronggui Street, Shunde District, Foshan City, Guangdong Province, China

EC	REP
----	-----

UAB Qixiang Europe

Pranciškonų g. 6-46, LT-01133 Vilnius, Lithuania

Technical Information Center

Trakehner Str. 7-9, 60487 Frankfurt am Main, Germany

Email: qixiang.europe@gmail.com

Phone: +49 6976 895074

UK	REP
----	-----

CET Product Service Ltd

Beacon House Stokenchurch Business Park,

Ilbstone Rd, Stokenchurch

High Wycombe HP14 3FE UK

Email: info.cetservice@gmail.com

Phone: +44 741932 5266



Scan the QR Code
for Videos and FAQs

