



# WIRELESS CONTROL PANEL

MODELS: L956W & CH125

## Product Manual




For more information, please visit [www.devancocanada.com](http://www.devancocanada.com) or call toll free at 1-855-931-3334




# Overview

Your Wireless Control Panel is compatible with Security+ 3.0™ garage door openers. All Security+ 3.0 garage door openers have a white learn button. The Wireless Control Panel can be used as a secondary device to open and close your garage door, and to turn on and off your garage door opener lights. The images throughout this manual are for reference only and your product may look different.

 **WARNING**

To prevent possible **SERIOUS INJURY** or **DEATH** from a moving gate or garage door:

- Install door control within sight of garage door, out of reach of children at a minimum height of 5 feet (1.5 m), and away from ALL moving parts of door.
- NEVER permit children to operate or play with door control push buttons or remote control transmitters.
- Activate door **ONLY** when it can be seen clearly, is properly adjusted, and there are no obstructions to door travel.
- ALWAYS keep garage door in sight until completely closed. NEVER permit anyone to cross path of closing garage door.
- Unattended devices and features are to be used **ONLY** with sectional doors.

 **WARNING:** This product can expose you to chemicals including lead, which are known to the State of California to cause cancer or birth defects or other reproductive harm. For more information go to [www.P65Warnings.ca.gov](http://www.P65Warnings.ca.gov).

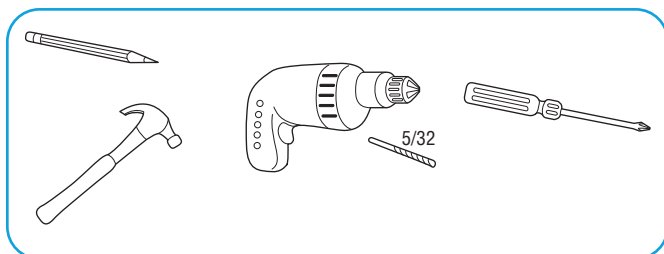
## Contents

Overview .....	2
Installation.....	3
Tools Required .....	3
Hardware Included .....	3
Mount the Control Panel .....	4
Programming the Control Panel to Your Garage Door Opener .....	5
Features and Operation .....	7
Program a Remote Control or Wireless Keypad to Your Garage Door Opener .....	8
To Erase All Codes from Garage Door Opener Memory (Remote Controls, Wireless Keypads, and Wireless Control Panel) .....	9
Replacing the Battery.....	10
Additional Resources .....	13

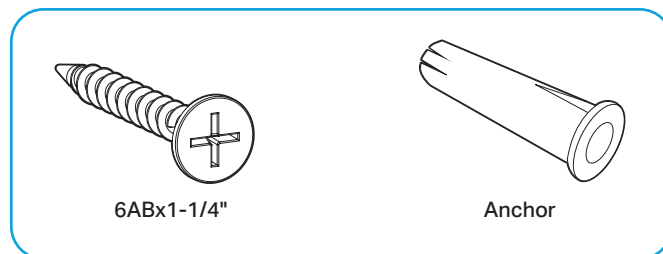
# Installation

Install the control panel within sight of the garage door at a minimum height of 5 feet (1.5m) where small children cannot reach, and away from moving parts of the door.

## Tools Required

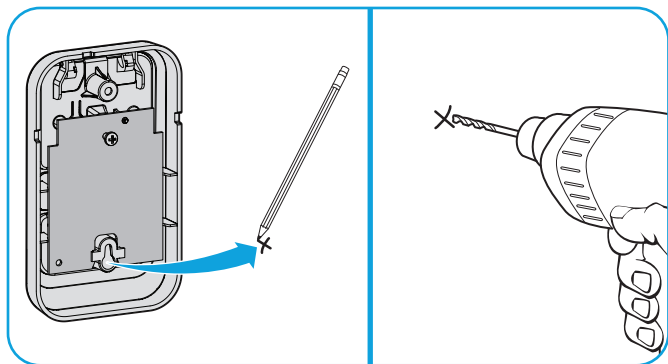


## Hardware Included

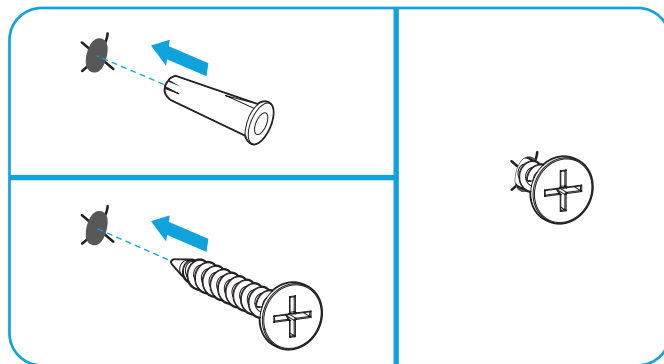


## Mount the Control Panel

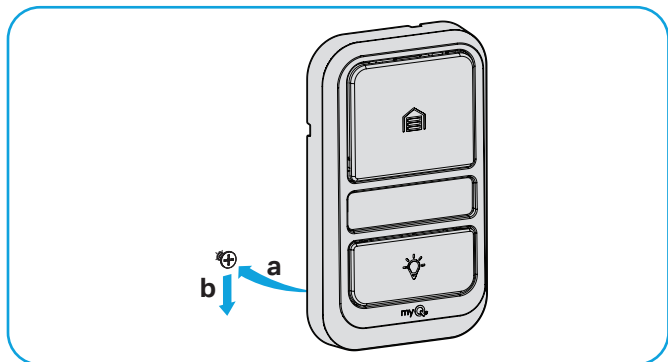
**01** Mark the location of the bottom mounting hole and drill a 5/32 inch (4 mm) hole.



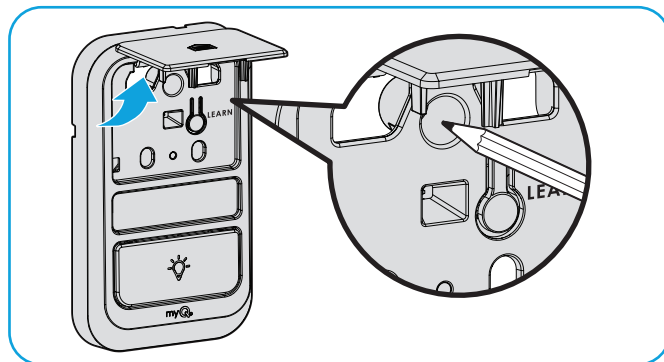
**02** Tap in anchor with hammer if installing on drywall. Install the bottom screw, allowing 1/8 inch (3 mm) to protrude from the wall.



**03** Position the bottom hole of the control panel over the screw (a) and slide down into place (b).



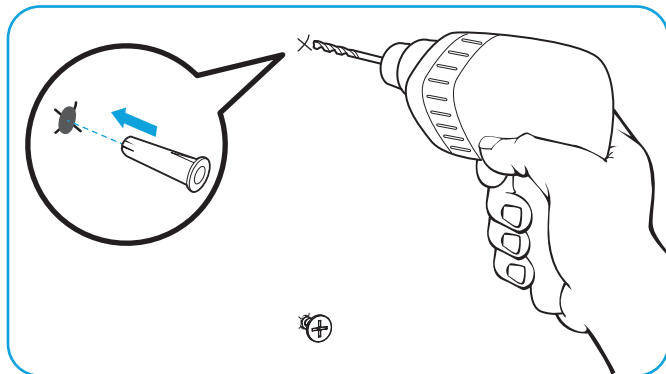
**04** Lift up the control panel push bar and mark the top hole.



## Installation (continued)

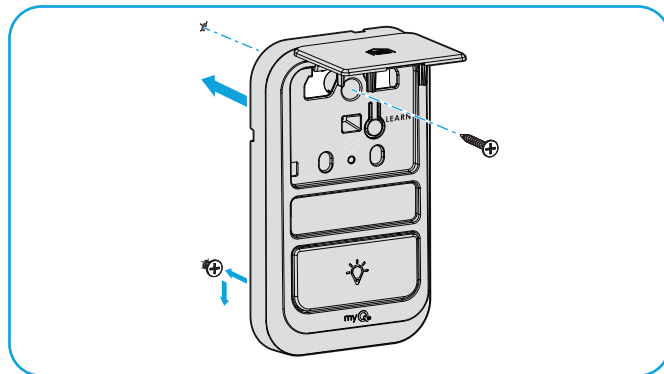
05

Remove the control panel from the wall and drill a 5/32 inch (4 mm) hole for the top screw. Tap in anchor with hammer if installing on drywall.



06

Position the bottom hole of the control panel over the screw and slide down into place. Install the top screw and close the push bar.



# Programming the Control Panel to Your Garage Door Opener

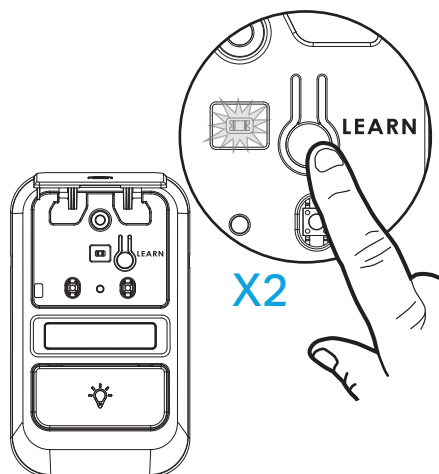
Choose an option below to program the wireless door control.

**01 Option 1:** Follow the instructions below for your door control panel model to set your garage door opener into programming mode.

**RECOMMENDATION:** Have your door control panel product manual available, as models vary in how to set the garage door opener into programming mode.

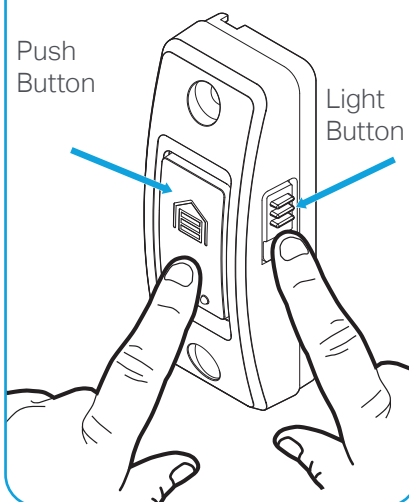
## Control Panel

Lift the push bar. Press the **LEARN** button **twice** (after the second press, the LED on the door control panel will pulse repeatedly).



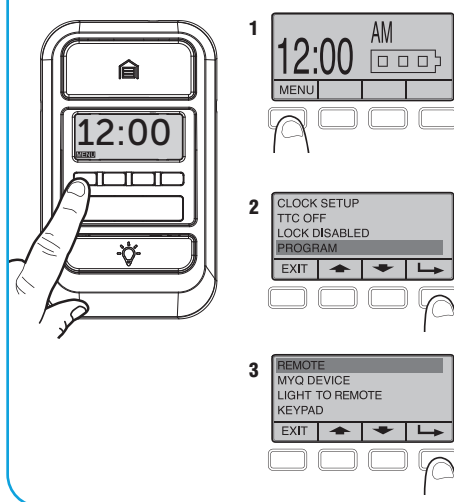
## Push Button Door Control

Press and hold the light button, then press and release the push button. The button LED will begin to flash.

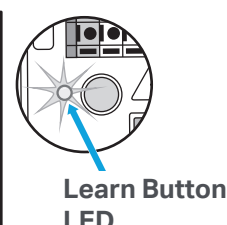
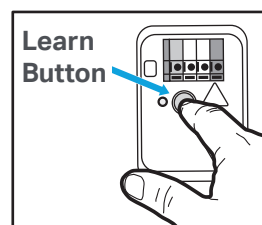
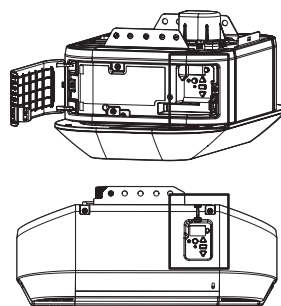
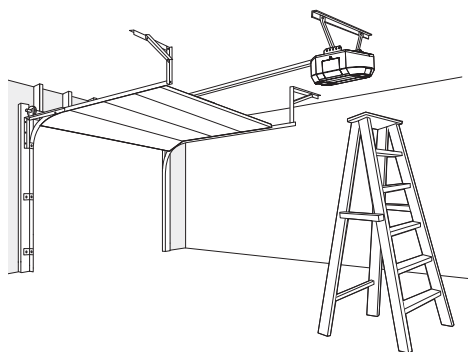


## Smart Control Panel

1. Select **MENU**.
2. Scroll down and select **PROGRAM**.
3. Scroll down and select **REMOTE**.

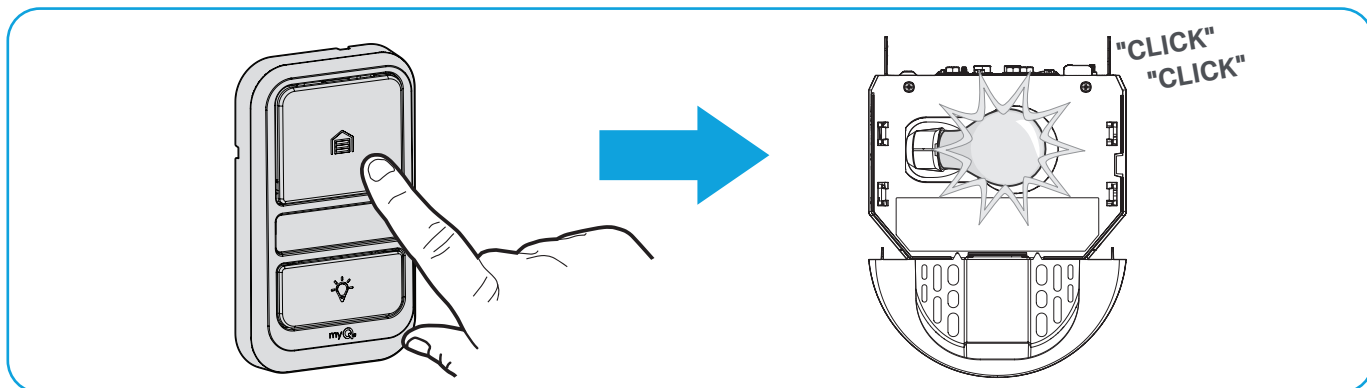


**Option 2:** Locate the LEARN button on your garage door opener (a ladder may be required). Press and **immediately** release the LEARN button. The LEARN button LED will turn on solid.



## Programming the Control Panel to Your Garage Door Opener (continued)

**02** Within 30 seconds, press and hold the control panel push bar until the garage door opener lights flash **and/or** two clicks are heard.

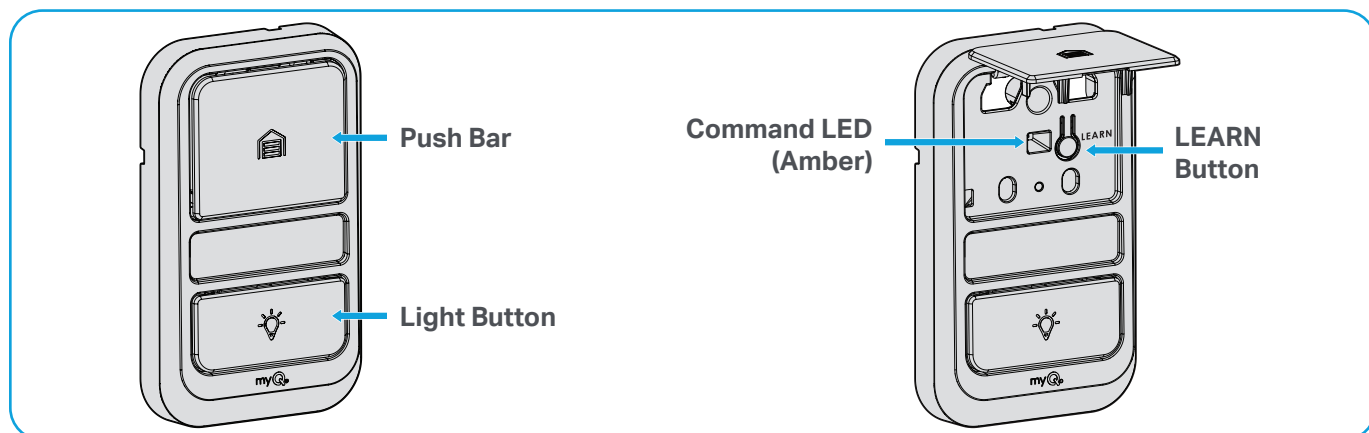


**TEST FOR SUCCESS:** Press the control panel push bar. The garage door opener will activate. Next, press the control panel light button. The garage door opener lights should turn on or off. If the garage door does not activate, and/or the garage door opener lights do not turn on or off, repeat the programming steps.

**NOTE:** The wireless control panel will continue to activate the garage door opener if a wired control panel has been placed into Lock mode.

# Features and Operation

## Features



## Operation

### Push Bar

Press push bar to open / close the garage door. When the push bar is pressed, the LED behind the push bar will blink when transmitting a signal. To conserve battery power, the LED will turn off when not in use. If the LED does not light when the push bar is pressed, the battery power is low. Replace the battery (see page 10 for instructions).

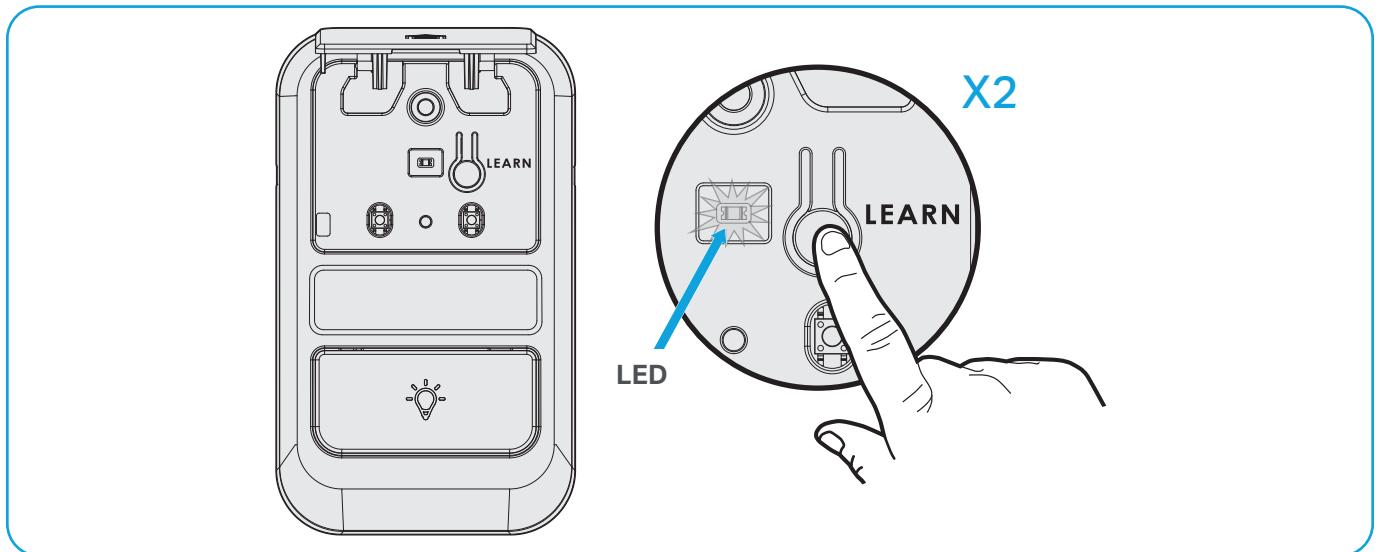
### Light Button

Press the light button to turn the garage door opener lights on or off. When the lights are turned on they will stay on until the light button is pressed again, or until the garage door opener is activated. Once the garage door opener is activated the lights will turn off after a specified period of time (the factory setting is 4 1/2 minutes). The light button will not control the lights when the door is in motion.

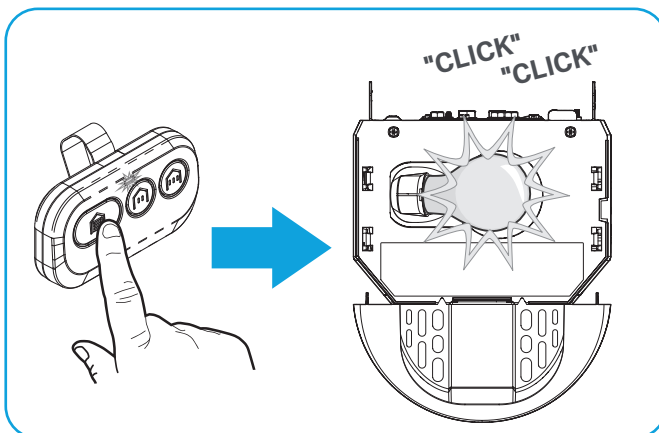
**NOTE:** Connect your garage door opener to the myQ app to manage the length of time the light stays on.

# Program a Remote Control or Wireless Keypad to Your Garage Door Opener

- 01** Lift the push bar. Press the LEARN button **twice** (after the second press, the LED on the door control panel will pulse repeatedly).

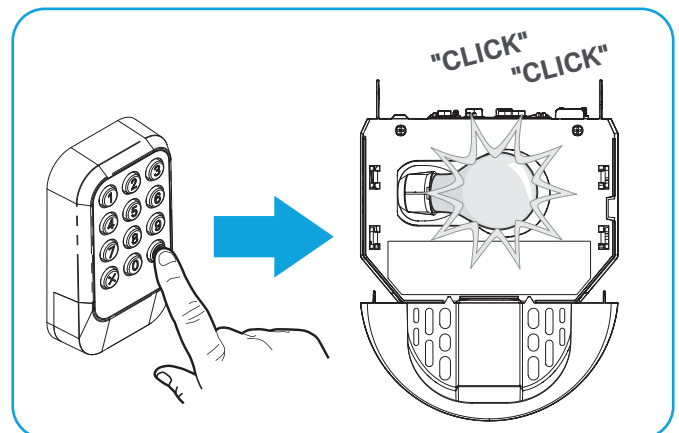


- 02a** Within 30 seconds, press and hold the button on the remote control that you wish to use. Release the button when the garage door opener lights flash **and/or** two clicks are heard.



**TEST FOR SUCCESS:** Press the remote button you programmed. The garage door opener will activate. If the garage door does not activate, repeat the programming steps.

- 02b** Within 30 seconds, enter a 4-8 digit personal identification number (PIN) of your choice. Press and hold the HOME button until the garage door opener lights flash **and/or** two clicks are heard.



**TEST FOR SUCCESS:** With the garage door closed, enter the PIN you programmed and press the HOME button. The garage door opener will open the door. If the garage door does not open, repeat the programming steps.

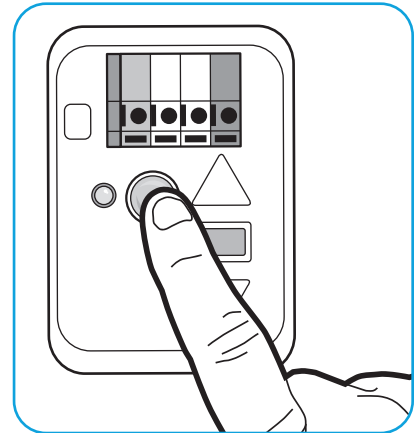


## To Erase All Codes from Garage Door Opener Memory (Remote Controls, Wireless Keypads, and Wireless Control Panel)

---

To deactivate the accessories, first erase all codes:

Press and hold the “Learn” button the garage door opener until the learn indicator light goes out (approximately 6 seconds). All previous codes are now erased. Reprogram each remote control, wireless keypad, or wireless control panel you wish to use.



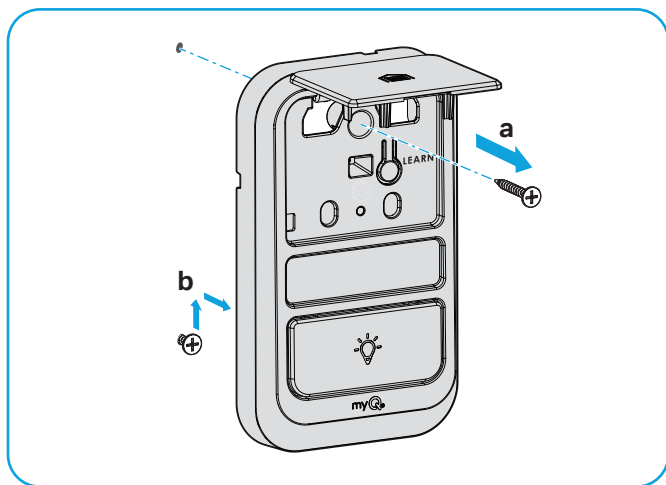
## Replacing the Battery

If the LED on your wireless control panel does not flash when the push bar is pressed, the battery power is low and it needs to be replaced.

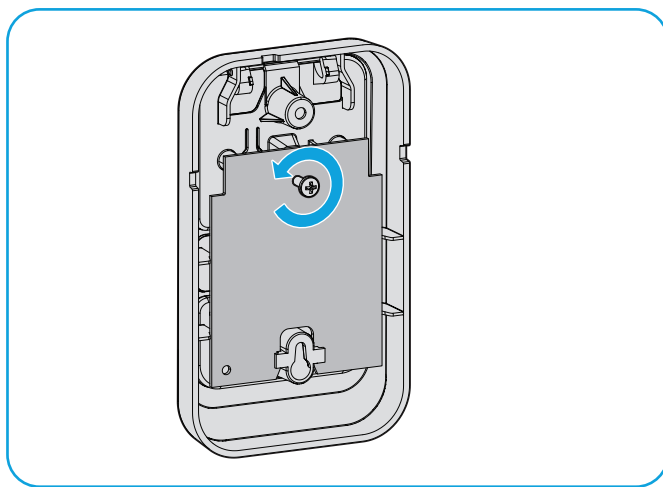
Replace the battery with only 3V CR2032 coin cell battery. Dispose of the old battery properly.

To replace battery, follow the instructions as shown below:

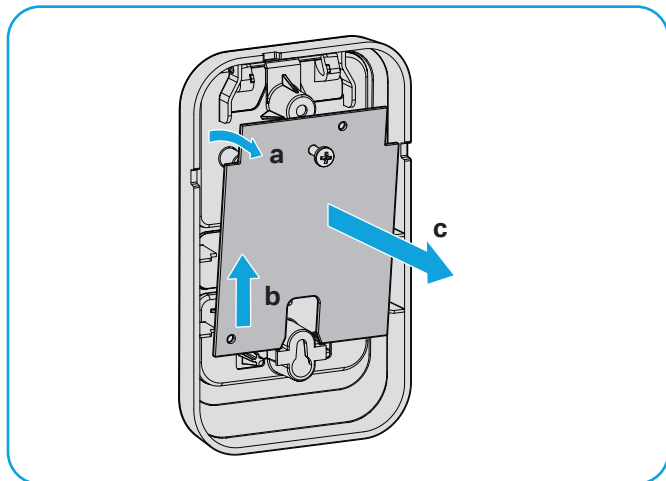
- 01** First, remove the control panel from the wall by unscrewing the top mounting screw (a). Lift the control panel up and pull off the wall (b).



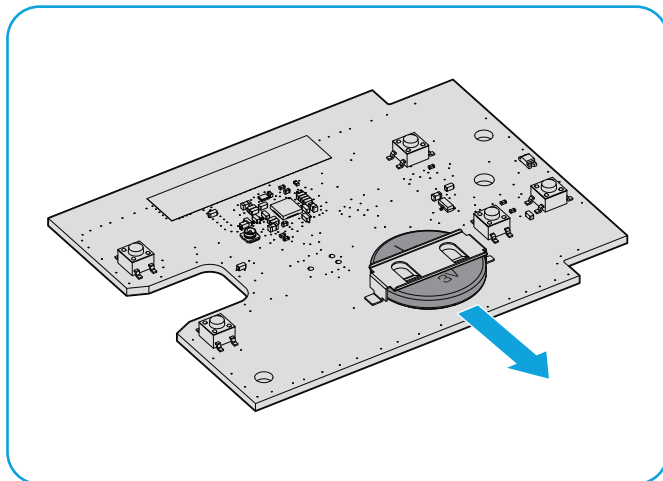
- 02** On the back side of the control panel, using a Phillips #2 screwdriver, unscrew the screw, holding the logic board in place. The screw should remain attached to the logic board.



- 03** Remove the logic board from the control panel. (a) Pull the top of the logic board away from the control panel. (b) Slide the logic board up out of the lower screw housing. (c) Pull the logic board away from the control panel.



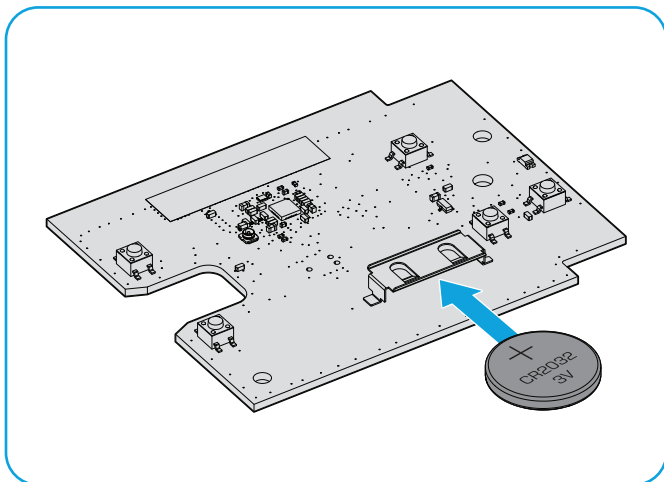
- 04** With a cotton swab, push the old battery out of its holder.



## Replacing the Battery (continued)

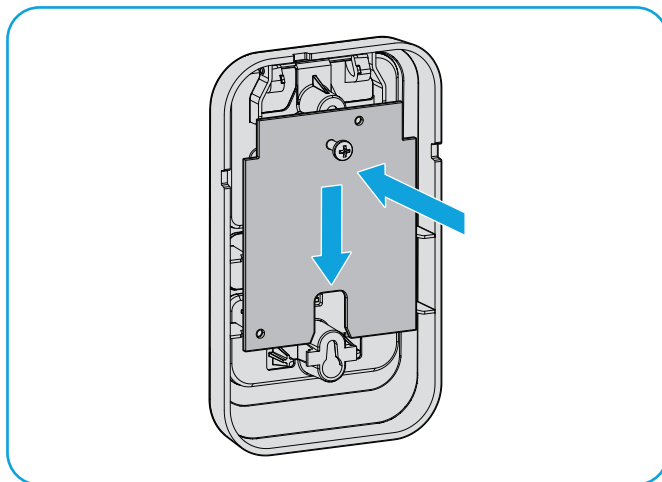
05

Insert the replacement battery positive side up and ensure it is centered with the strap.



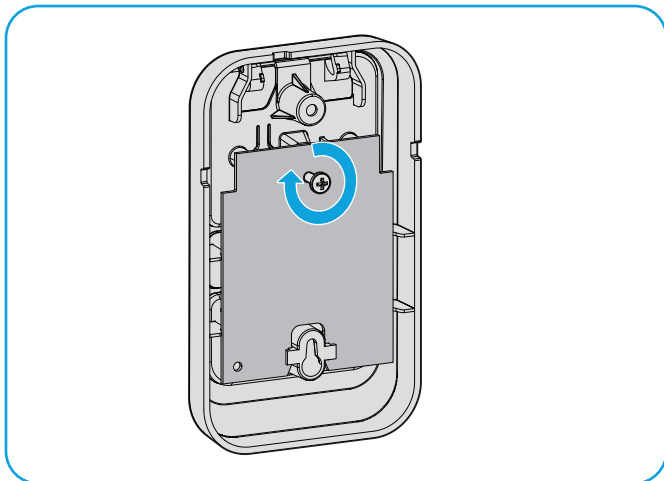
06

Replace the logic board onto the backside of the control panel. Slide the logic board under the lower screw housing. Then align the guiding hole in the board to the control panel. The logic board should not move once secure in the control panel.



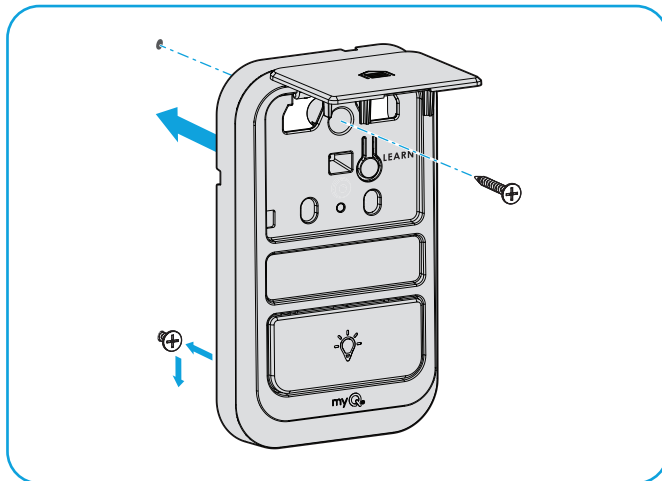
07

Use a Phillips #2 screwdriver to attach the logic board to the control panel with the screw.



08

Position the bottom hole of the control panel over the screw and slide down into place. Install the top screw and close the push bar.



## Replacing the Battery (continued)

### ⚠ WARNING

- **INGESTION HAZARD:** This product contains a button cell or coin battery.
- **DEATH** or serious injury can occur if ingested.
- A swallowed button cell or coin battery can cause **Internal Chemical Burns** in as little as **2 hours**.
- **KEEP** new and used batteries OUT OF REACH of CHILDREN.
- **Seek immediate medical attention** if a battery is suspected to be swallowed or inserted inside any part of the body.



### ⚠ WARNING

- Remove and immediately recycle or dispose of used batteries according to local regulations and keep away from children. Do NOT dispose of batteries in household trash or incinerate.
- Even used batteries may cause severe injury or death.
- Call a local poison control center for treatment information.
- Battery Type: CR2032
- Battery Voltage: 3 V
- Non-rechargeable batteries are not to be recharged.
- Do not force discharge, recharge, disassemble, heat above (manufacturer's specified temperature rating) or incinerate. Doing so may result in injury due to venting, leakage or explosion resulting in chemical burns.
- Ensure the batteries are installed correctly according to polarity (+ and -).
- Do not mix old and new batteries, different brands or types of batteries, such as alkaline, carbon-zinc, or rechargeable batteries.
- Remove and immediately recycle or dispose of batteries from equipment not used for an extended period of time according to local regulations.
- Always completely secure the battery compartment. If the battery compartment does not close securely, stop using the product, remove the batteries, and keep them away from children.

## Additional Resources

### One Year Limited Warranty

The Chamberlain Group LLC ("Seller") warrants to the first consumer purchaser of this product that it is free from defect in materials and/or workmanship for a period of 1 year from the date of purchase.

For more information, visit [www.myq.com/warranty](http://www.myq.com/warranty)

### Contact Us

For additional information or assistance, please visit: [support.chamberlaingroup.com](http://support.chamberlaingroup.com)

NOTICE: This device complies with part 15 of the FCC rules and Innovation, Science and Economic Development Canada license-exempt RSSs. Operation is subject to the following two conditions: (1) This device may not cause harmful interference, and (2) this device must accept any interference received, including interference that may cause undesired operation. Any changes or modification not expressly approved by the party responsible for compliance could void the user's authority to operate the equipment.

## HOW TO ORDER REPAIR PARTS

**DEVANCO**  **CANADA**

19192 HAY ROAD, UNIT Q  
SUMMERSTOWN, ON, K0C 2E0

TOLL FREE 1-855-931-3334  
[WWW.DEVANCOCANADA.COM](http://WWW.DEVANCOCANADA.COM)

**WHEN ORDERING REPAIR PARTS  
PLEASE SUPPLY THE FOLLOWING INFORMATION:**

- ✓ **PART NUMBER**
- ✓ **DESCRIPTION**
- ✓ **MODEL NUMBER**

©2025 The Chamberlain Group LLC

myQ and the myQ logo are trademarks, service marks, and/or registered trademarks of The Chamberlain Group LLC. All other trademarks, service marks and product names used herein are the property of their respective owners.  
The Chamberlain Group LLC, 300 Windsor Drive, Oak Brook, IL, 60523, United States  
See [chamberlain.com/patents](http://chamberlain.com/patents)